



# FACT BOOKLET 2013-2014

**see blue.**<sup>™</sup>  
*in everything we do.*

UNIVERSITY OF KENTUCKY



# Table of Contents

Letter from President Eli Capilouto	2-3	Private Giving	26
UK Mission and Vision	4	Grant and Contract Awards	27
Enrollment	5-9	Research and Development	28
First-year Student Profile	10-11	University Endowment	29
Retention and Graduation Rates	12-13	Library Collections	30
Degrees Conferred	14-16	Benchmark Institutions	31
Annual Tuition and Fees	17	Administrative Organization	32
Full-time Employees	18-19	Board of Trustees	33
Faculty Statistics	20-22	Administrative History	34
Faculty Salaries	23	UK Values	35
Budgeted Revenue and Expenditures	24-25		



## January 2014

We are proud to publish the 2013-14 Fact Booklet; a collection of current statistics about people and programs at the University of Kentucky. In accordance with KRS 164.250, this booklet provides important data to our stakeholders and the general public, including information on enrollment management; retention and graduation rates; research contracts, grants and expenditures; faculty salaries; and a summary of the 2013-2014 Operating and Capital Budget.

For the second year in a row, we established a record for the largest and most diverse first-year class in our history. Thirty percent of our freshmen came from outside the Commonwealth to pursue their undergraduate education at UK. The number of African American and Hispanic freshmen who enrolled in fall 2013 increased by 19 percent and 28 percent, respectively, from the previous year. One-hundred five of our first-year class distinguished themselves as National Merit, National Achievement or National Hispanic finalists. Just over 29,400 students are pursuing degrees at the undergraduate and graduate levels, another UK record. We continue to be the top choice for Kentucky students and those in our target recruitment regions.

The University's public/private partnership with EdR continues to make progress. In January, the UK Board of Trustees authorized Phase II-C of the ongoing public-private partnership with EdR to construct more than 1,140 additional modern residence hall beds in two new facilities on north campus. The next phase brings the total completed/ongoing construction to more than \$348 million, 5,733 beds, 202 active learning spaces and 12 buildings across campus to be completed by 2016.



Construction is underway on the dramatic renewal and expansion of the Gatton College of Business and Economics. The revitalization of Commonwealth Stadium commenced in early January and work on the new Academic Science Building will start at the end of the spring 2014 semester.

These priorities embolden our mission as a renowned flagship and land grant research university. They bolster our promise to Kentucky – a covenant that has never been more vital. As we continue our ascent, we are building a better University of Kentucky, and through it, a better future for our state.

Sincerely,

A handwritten signature in black ink that reads "Eli A. Capilouto". The signature is written in a cursive style with a large initial "E" and "C".

Eli Capilouto  
President





# MISSION

The University of Kentucky is a public, land grant university dedicated to improving people's lives through excellence in education, research and creative work, service, and health care. As Kentucky's flagship institution, the University plays a critical leadership role by promoting diversity, inclusion, economic development, and human well-being.

# VISION

The University of Kentucky will be one of the nation's 20 best public research universities.

-- Adopted by the Board of Trustees, June 9, 2009



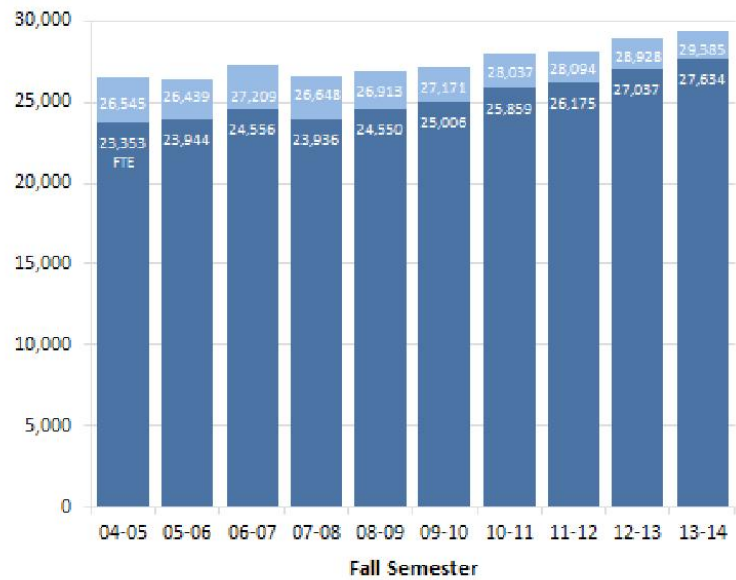
# ENROLLMENT - Headcount and Full-time Equivalent

## Fall 2013 Headcount

Level	Full-time	Part-time	Total
Undergraduate	19,884	1,557	21,441
Graduate*	5,774	1,220	6,994
<b>Subtotal (IPEDS)</b>	<b>25,658</b>	<b>2,777</b>	<b>28,435</b>
UG Auditors	1	53	54
Postdoctoral	242	0	242
House Staff	654	0	654
<b>Total (CPE)</b>	<b>26,555</b>	<b>2,830</b>	<b>29,385</b>

FTE calculations have been revised in accordance with CPE guidelines. The new method uses a formula that weights the number of student credit hours by students' degree level.

\*Note: Beginning in 2009-10, federal reporting guidelines for enrollments eliminated the first-professional degree category and established a new Doctor's Degree - Professional Practice category. These degree programs are now subsumed under the graduate classification.





# ENROLLMENT - Fall 2013 at a Glance

		<b>% of Total</b>
Men	14,139	48.1
Women	15,246	51.9
<b>Total</b>	<b>29,385</b>	<b>100.0</b>
Full-time	26,555	90.4
Part-time	2,830	9.6
<b>Total</b>	<b>29,385</b>	<b>100.0</b>
Resident	21,268	72.4
Non-resident	8,117	27.6
<b>Total</b>	<b>29,385</b>	<b>100.0</b>

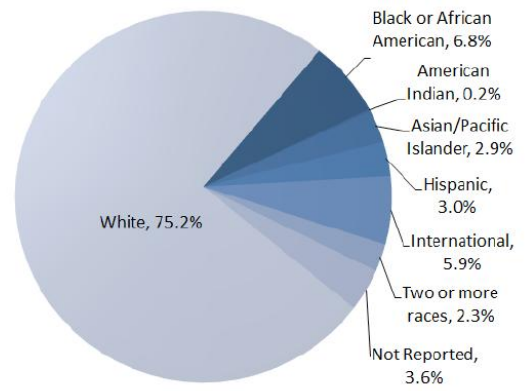
		<b>% of Total</b>
Freshmen	5,776	19.7
Sophomores	4,489	15.3
Juniors	4,691	16.0
Seniors	6,094	20.7
UG Non-degree	445	1.5
<b>Subtotal Undergraduate</b>	<b>21,495</b>	<b>73.1</b>
Master/Specialist	2,468	8.4
Doctoral*	4,247	14.5
Graduate Non-degree	279	0.9
<b>Subtotal Graduate</b>	<b>6,994</b>	<b>23.8</b>
<b>House Staff/Post Doctoral</b>	<b>896</b>	<b>3.0</b>
<b>Total</b>	<b>29,385</b>	<b>100.0</b>

\*Note: Beginning in 2009-10, federal reporting guidelines for enrollments eliminated the first-professional degree category and established a new Doctor's Degree - Professional Practice category. These degree programs are included under the Doctoral classification.



# ENROLLMENT - Fall 2013 by Race/Ethnicity

	<u>Undergrad</u>	<u>Grad.</u>	<u>Post</u> <u>Doc.</u>	<u>House</u> <u>Staff</u>	<u>Total</u>
Black or African American	1,658	329	3	15	2,005
Amer. Indian/ Alaskan Native	38	14	0	0	52
Asian/Pacific Islander	551	207	32	70	860
Hispanic/Latino	705	173	4	14	896
International	607	947	126	53	1,733
White	16,669	4,900	66	462	22,097
Two or more races	602	81	2	0	685
Not Reported	665	343	9	40	1,057
<b>Total</b>	<b>21,495</b>	<b>6,994</b>	<b>242</b>	<b>654</b>	<b>29,385</b>



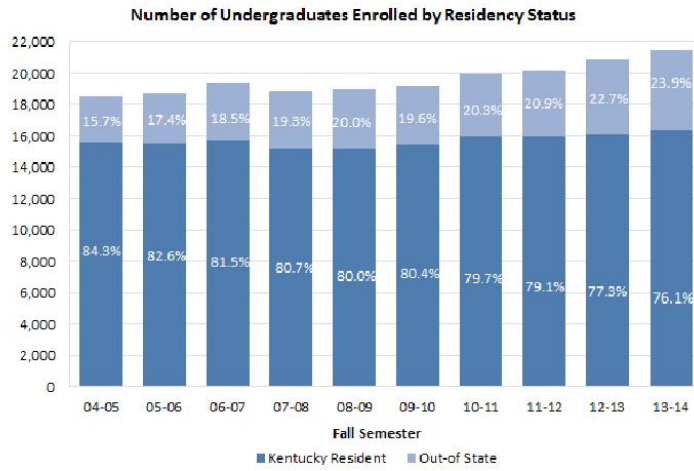
Total = 29,385





# UNDERGRADUATES - by Residency Status

<u>Year</u>	<u>Kentucky Residents</u>	<u>Out-of-State Students</u>
Fall 2013	16,367	5,128
Fall 2012	16,142	4,736
Fall 2011	15,949	4,203
Fall 2010	15,933	4,055
Fall 2009	15,457	3,760
Fall 2008	15,197	3,791
Fall 2007	15,196	3,634
Fall 2006	15,757	3,571
Fall 2005	15,481	3,251
Fall 2004	15,587	2,905

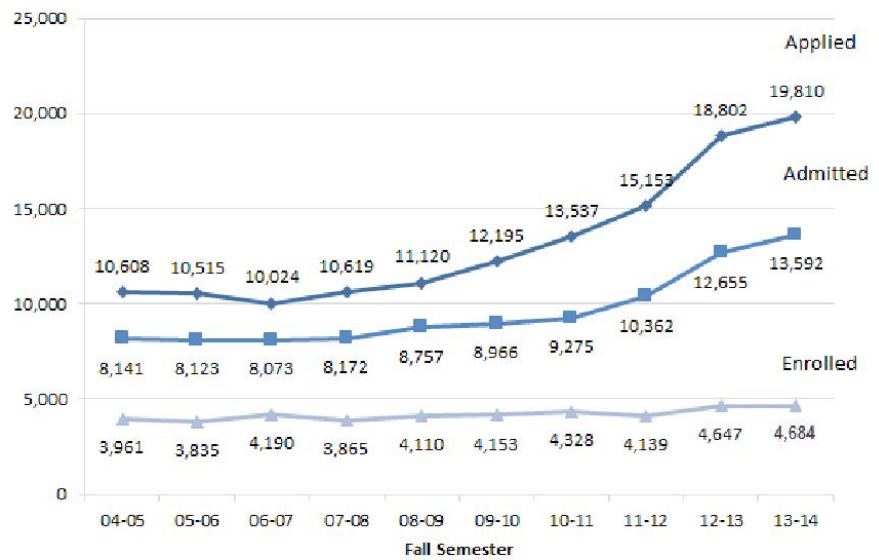




# APPLIED, ADMITTED and ENROLLED

## First-year Students Fall 2013

Applied	19,810
Admitted	13,592
Enrolled	4,684
Admit. Rate	68.6%
Yield Rate	34.2%





# FIRST-YEAR STUDENT PROFILE

	<b>2009</b>	<b>2010</b>	<b>2011</b>	<b>2012</b>	<b>2013</b>
Total	4,153	4,328	4,139	4,647	4,684
Female	2,118	2,219	2,194	2,498	2,623
Black or African-American	403	418*	422*	533*	553*
Out-of-State	897	1,012	1,073	1,442	1,401**
International	44	47	56	110	
Full-Time	4,111	4,282	4,082	4,588	4,619
Governor's Scholars and Governor's School for the Arts	404	371	394	427	417
Merit Scholars	31	33	32	70	105***
Valedictorians	141	147	154	208	182

\* This number includes students who reported two or more races, one of which was "Black or African American".

\*\* Includes International Students.

\*\*\* Number includes National Merit, National Achievement and National Hispanic Finalists

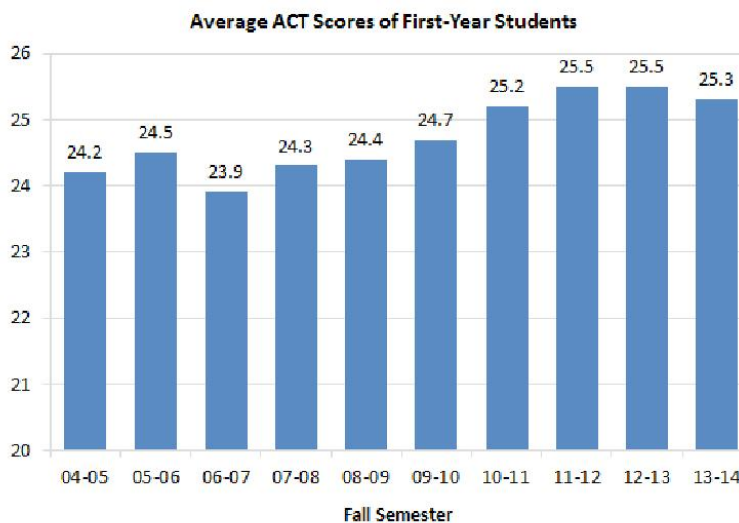




# ACT Scores - Entering First-year Students

<u>Year</u>	<u>N</u>	<u>Mean</u>	<u>25th/75th Percentile</u>
Fall 2013	4,326	25.3	22/28
Fall 2012	4,240	25.5	23/28
Fall 2011	3,865	25.5	23/28
Fall 2010	4,049	25.2	22/28
Fall 2009	3,906	24.7	22/28
Fall 2008	3,825	24.4	22/27
Fall 2007	3,532	24.3	21/27
Fall 2006	3,864	23.9	21/26
Fall 2005	3,453	24.5	22/27
Fall 2004	3,609	24.2	21/27

Note: Some students submit SAT scores rather than ACT scores. These students' scores are not reflected in the table and graph.







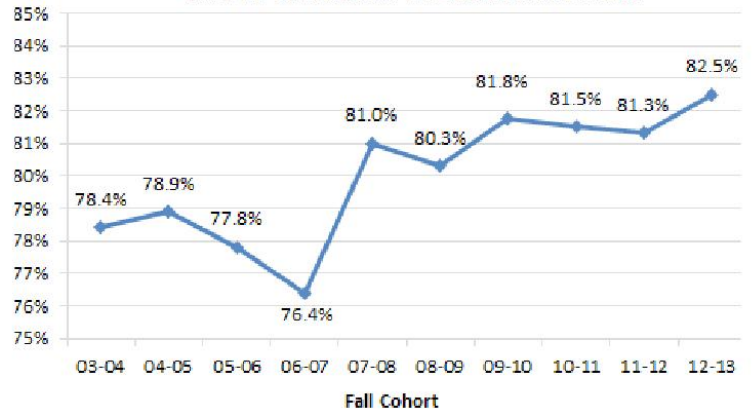
# RETENTION RATE

## First-to-second Year Retention Rate\*

Cohort	Overall	Black or African American		
		White	American	Other
2012	82.5	83.3	76.7	81.7
2011	81.3	82.2	73.8	82.8
2010	81.5	81.8	80.9	80.3
2009	81.8	83.1	71.2	80.6
2008	80.3	80.5	75.3	84.4
2007	81.0	81.2	80.0	79.5
2006	76.4	76.3	76.6	77.7
2005	77.8	78.0	76.1	76.4
2004	78.9	79.6	69.0	80.5
2003	78.4	78.4	72.8	83.1

\*Retention rates apply to first-time, full-time, degree-seeking students.

First-to-Second Year Overall Retention Rate





# GRADUATION RATE

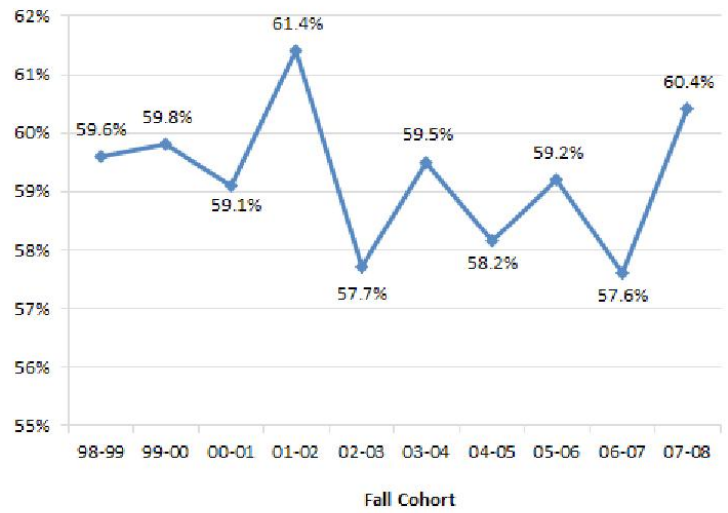
## Six-year Graduation Rate\*

<u>Cohort</u>	<u>Overall</u>	<u>Black or African</u>		<u>Other</u>
		<u>White</u>	<u>American</u>	
2007	60.4	61.8	43.7	59.0
2006	57.6	58.4	49.8	55.9
2005	59.2	59.7	46.8	58.2
2004	58.2	60.1	38.7	51.5
2003	59.6	60.5	42.9	62.8
2002	57.7	58.6	47.6	51.1
2001**	61.4	62.5	50.3	49.6
2000	59.1	60.6	45.0	50.5
1999	59.8	60.8	46.2	57.1
1998	59.6	60.2	49.7	61.4

\*Graduation rates apply to first-time, full-time, degree-seeking students.

\*\*Reflects a correction made after IPEDS submission.

Six-Year Overall Graduation Rate

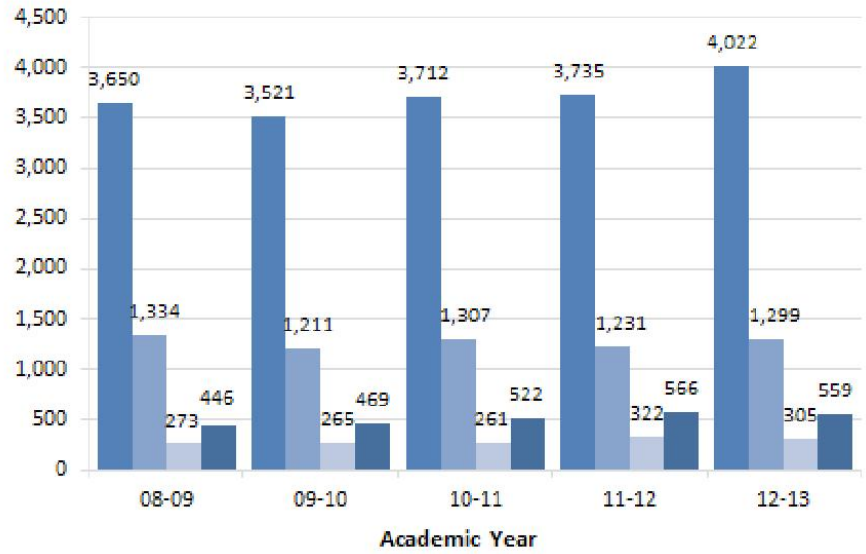




# DEGREES CONFERRED

## 2012-2013

Baccalaureate	4,022
Master's/Specialist's	1,299
Doctor's Degree:	
Research/Scholarship	305
Professional Practice	559





# DEGREES CONFERRED - By College

## 2011-2012

<u>College</u>	<u>Bacc.</u>	<u>Mast.*</u>	<u>Doc.**</u>
Agriculture	580	79	38
Arts & Sciences	1144	136	81
Business & Economics	652	161	19
Communication & Information	346	87	5
Dentistry	-	2	56
Design	53	31	
Education	389	265	37
Engineering	395	86	34
Fine Arts	127	24	19

<u>College</u>	<u>Bacc.</u>	<u>Mast.*</u>	<u>Doc.**</u>
Grad. School	-	65	6
Grad. Ctr. for Toxicology	-	3	4
Health Sciences	62	95	104
Law	-		128
Medicine	-	25	151
Nursing	211	6	31
Pharmacy	-	3	135
Public Health	-	85	13
Social Work	63	146	3
Total	4,022	1,299	864

\* Includes Specialist degrees

\*\* Includes Doctor's Degrees (Research/Scholarship) and Doctor's Degrees (Professional Practice)

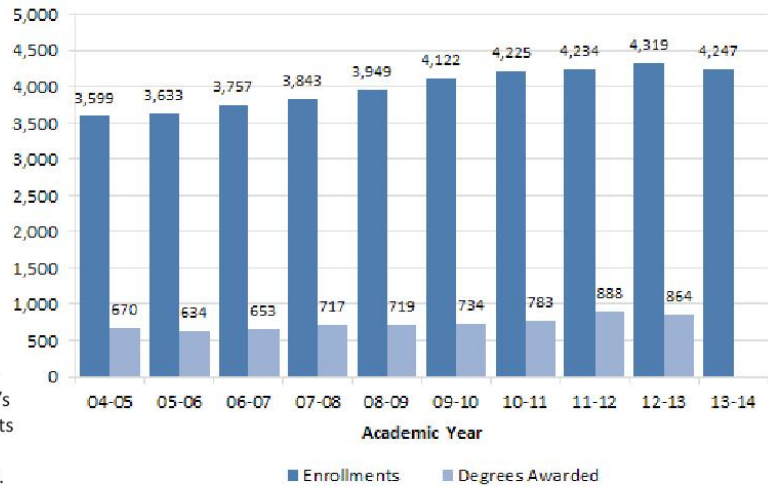




# DOCTORATES - Enrollments and Degrees Awarded

<u>Year</u>	<u>Fall Enrollment</u>	<u>Degrees Awarded</u>
2013-14	4,247	
2012-13	4,319	864
2011-12	4,234	888
2010-11	4,225	783
2009-10	4,122	734
2008-09	3,949	719
2007-08	3,843	717
2006-07	3,757	653
2005-06	3,633	634
2004-05	3,599	670

Number of Doctoral Students and Doctoral Degree Recipients



Note1: Federal reporting guidelines have eliminated the first-professional degree category and established a new Doctor's Degree - Professional Practice category. Doctoral enrollments and degree recipients have been revised to include enrollments and degrees from former first-professional programs.

Note2: Enrollments are based on the fall semester of a given academic year. The number of degree recipients for 2013-14 is not yet available.



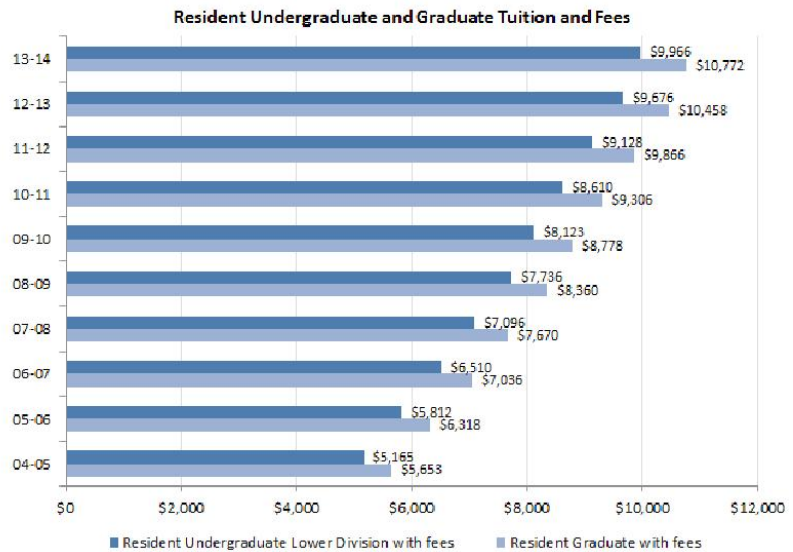
# ANNUAL TUITION and FEES

## 2013-2014

<u>Resident</u>	<u>Tuition</u>	<u>Fees</u>
Graduate	\$ 9,674	\$ 1,098
Undergraduate		
- Lower Division	8,868	1,098
- Upper Division	9,156	1,098
<u>Non-resident</u>	<u>Tuition</u>	<u>Fees</u>
Graduate	\$ 21,740	\$ 1,098
Undergraduate		
- Lower Division	19,954	1,098
- Upper Division	20,256	1,098

Note 1: The undergraduate tuition rate in the graph applies to lower division students.

Note 2: Several graduate programs (e.g., MBA) have differential tuition rates.





# FULL-TIME EMPLOYEES

## 2013-2014

<b>Full-Time Employees</b>	President's Office	Educational Units	Provost		Health Affairs	Research	Total	% Total
			Administration/Support	Finance and Administration				
Exec./Admin./Managerial	46	195	86	66	103	40	536	4.3%
Faculty	0	2,225	0	0	0	2	2,227	17.9%
Library Faculty	0	6	54	0	0	0	60	0.5%
Other Professional	209	1,912	380	222	1,467	261	4,451	35.8%
Secretarial/Clerical	75	1,155	214	143	695	52	2,334	18.8%
Tech./Paraprofessional	10	176	100	612	193	32	1,123	9.0%
Skilled Crafts	6	26	5	152		3	192	1.5%
Service/Maintenance	23	829	53	153	373	76	1,507	12.1%
<b>Total</b>	<b>369</b>	<b>6,524</b>	<b>892</b>	<b>1,348</b>	<b>2,831</b>	<b>466</b>	<b>12,430</b>	<b>100.0%</b>

Note 1: Percentages may not total properly due to rounding.

Note 2: The President's Office includes staff from the Athletics Department and the Offices of the General Counsel, Institutional Advancement, and Commercialization and Economic Development.

Note 3: Starting in 2006-07, library faculty are reported to the federal government in the other professional category. For this publication, library faculty are classified separately.



# FULL-TIME EMPLOYEE DEMOGRAPHICS

## 2013-2014

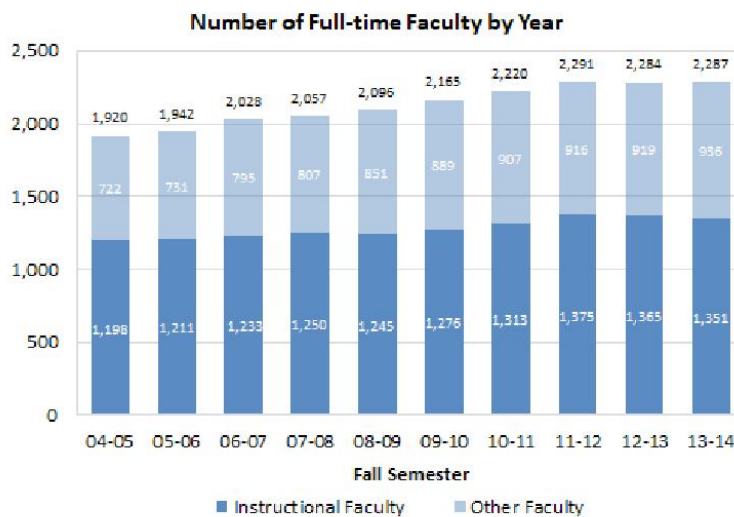
<u>Full-time Employees</u>	<u>Black or African American</u>	<u>American Indian/Alaskan Native</u>	<u>Asian/Pacific Islander</u>	<u>Hispanic/Latino</u>	<u>White</u>	<u>Two or more races</u>	<u>Un-known</u>	<u>Female</u>	<u>Male</u>
Exec./Admin./Managerial	25	0	9	2	497	3	0	263	273
Faculty	86	1	276	61	1794	9	0	839	1388
Library Faculty	2	0	2	0	56	0	0	40	20
Other Professional	187	1	195	48	3994	26	0	2843	1608
Secretarial/Clerical	279	2	25	21	1986	20	1	2060	274
Tech./Paraprofessional	128	2	55	24	1281	14	3	928	579
Skilled Crafts	21	0	2	0	168	1	0	3	189
Service/Maintenance	326	0	19	7	763	8	0	416	707
<b>Total</b>	<b>1,054</b>	<b>6</b>	<b>583</b>	<b>163</b>	<b>10,539</b>	<b>81</b>	<b>4</b>	<b>7,392</b>	<b>5,038</b>





# FULL-TIME FACULTY - Historical Trends

	<u>Instructional Faculty*</u>	<u>Other Faculty</u>
2013-2014	1,351	936
2012-2013	1,365	919
2011-2012	1,375	916
2010-2011	1,313	907
2009-2010	1,276	889
2008-2009	1,245	851
2007-2008	1,250	807
2006-2007	1,233	795
2005-2006	1,211	731
2004-2005	1,198	722



\*Note: Instructional faculty in preclinical and clinical medicine are not included.



# FACULTY DEMOGRAPHICS

## Tenured and Tenure-track Faculty 2013-2014

<b>Full-Time Faculty</b>	<b><u>Black or African American</u></b>		<b><u>Asian/ Pac. Islander</u></b>		<b><u>Hispanic/ Latino</u></b>		<b><u>White</u></b>		<b><u>Two or more races</u></b>	
	<b>M</b>	<b>F</b>	<b>M</b>	<b>F</b>	<b>M</b>	<b>F</b>	<b>M</b>	<b>F</b>	<b>M</b>	<b>F</b>
Professors/Lib. I	7	5	63	7	9	2	446	135		
Associate Professors/Lib. II	20	15	41	22	6	8	268	175	4	
Assistant Professors/Lib. III	9	13	36	16	10	6	140	109	1	2
Instructors/Lib. IV							2	2		
<b>Total</b>	<b>36</b>	<b>33</b>	<b>140</b>	<b>45</b>	<b>25</b>	<b>16</b>	<b>856</b>	<b>421</b>	<b>5</b>	<b>2</b>



# FACULTY - By Rank and Title Series: 2013-2014

## Tenured/Tenure Track

<u>Rank</u>	<u>Regular</u>	<u>Librarian</u>	<u>Extension</u>	<u>Spec. Title</u>	<u>Total</u>
Professors/Lib. I	540	21	40	73	674
Associate Professors/Lib. II	403	26	17	113	559
Assistant Professors/Lib. III	265	9	12	56	342
Instructors/Lib. IV		4			4
<b>Total</b>	<b>1,208</b>	<b>60</b>	<b>69</b>	<b>242</b>	<b>1,579</b>

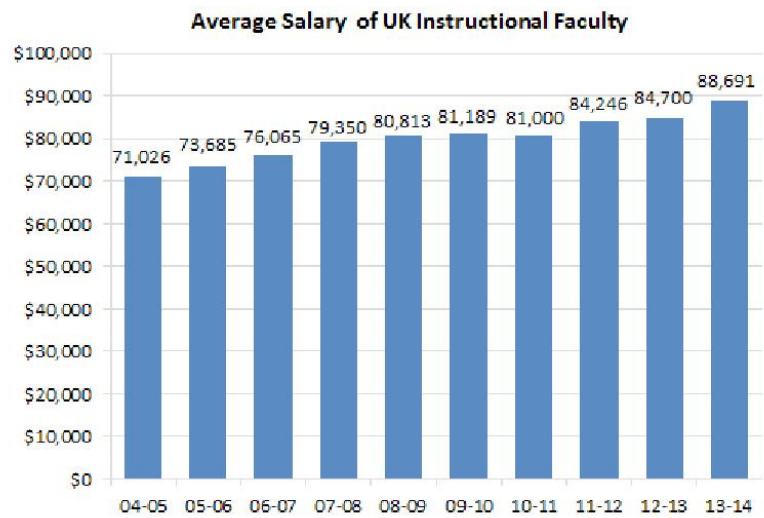
## Non-tenure Track

<u>Rank</u>	<u>Clinical</u>	<u>Research</u>	<u>Lecturer</u>	<u>Other</u>	<u>Total</u>
Professors	28	2		3	33
Associate Professors	84	15		2	101
Assistant Professors	293	56		2	351
Instructors	18		175	30	223
<b>Total</b>	<b>423</b>	<b>73</b>	<b>175</b>	<b>37</b>	<b>708</b>



# FACULTY SALARIES

<u>Fall</u>	<u>All-ranks</u> <u>Average Salary</u>
2013	\$ 88,691
2012	84,700
2011	84,246
2010	81,000
2009	81,189
2008	80,813
2007	79,350
2006	76,065
2005	73,685
2004	71,026

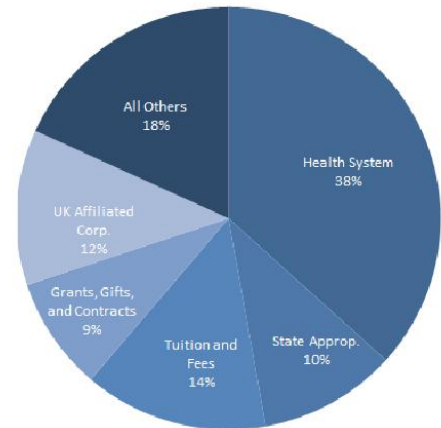






# REVENUE (In Millions)

Source of Funds	Revised Budget	Budget
	2012-13	2013-14
State Appropriations	\$283.9	\$283.9
Student Tuition and Fees	338.6	380.0
County Appropriations	19.2	22.1
Endowment and Investment Income	17.6	21.5
Federal Appropriations	18.5	18.3
Gifts, Grants and Contracts	218.0	235.4
Sales and Services	23.2	22.1
Hospital Services	985.5	994.3
Auxiliary Enterprises	178.7	186.6
UK Affiliated Corporations	337.7	322.6
Appropriated Fund Balances - University	213.5	217.3
Transfers	3.8	5.1
<b>Total</b>	<b>\$2,638.2</b>	<b>\$2,709.2</b>



2013-2014 Budget



# EXPENDITURES (In Millions)

<b>Program</b>	<b>Revised Budget</b>		<b>Budget</b>	
	<b>2012-13</b>		<b>2013-14</b>	
Instruction	\$357.1		\$374.0	
Research	274.2		271.9	
Public Service	332.7		339.7	
Libraries	24.9		25.5	
Academic Support	99.3		106.4	
Student Services	36.2		36.0	
Institutional Support	145.6		155.3	
Operations and Maintenance	70.5		74.4	
Student Financial Aid	124.1		135.6	
Transfers				
Capital Transfers	1.1		1.9	
Mandatory Transfers	19.5		11.6	
Auxiliary Enterprises	150.5		161.0	
Transfers				
Capital Transfers	14.1		17.6	
Mandatory Transfers	13.7		12.9	
Hospital Services	929.2		938.8	
Transfers				
Capital Transfers	0.0		0.0	
Mandatory Transfers	45.5		46.6	
<b>Total</b>	<b>\$2,638.2</b>		<b>\$2,709.2</b>	

<b>Category</b>	<b>Revised Budget</b>		<b>Budget</b>	
	<b>2012-13</b>		<b>2013-14</b>	
Personnel Services	\$1,270.4		\$1,300.1	
Operating Expenses	1,106.1		1,145.6	
Financial Aid	124.1		135.6	
Capital Outlay	43.7		37.4	
Transfers				
Capital Transfers	15.3		19.5	
Mandatory Transfers	78.6		71.0	
<b>Total</b>	<b>\$2,638.2</b>		<b>\$2,709.2</b>	

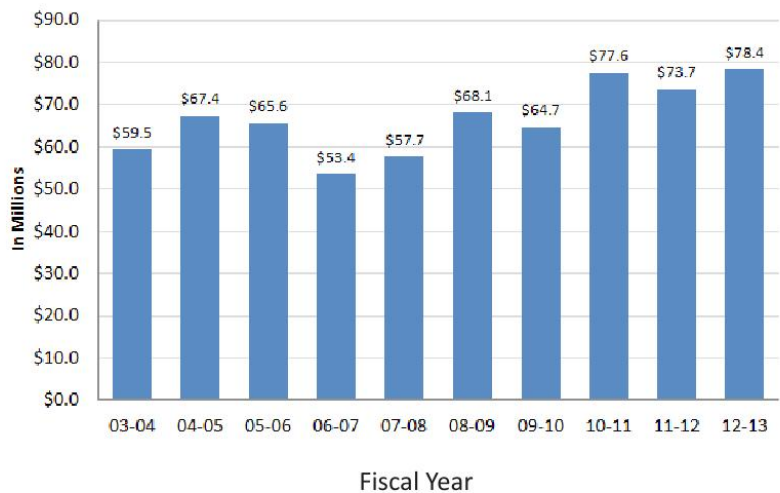


# PRIVATE GIVING (In Millions)

## Fiscal Year 2012-2013

Alumni	\$ 23.2
Non-alumni	20.2
Corporations	13.2
Foundations	11.1
Trusts/Associations	10.7
<b>Total</b>	<b>\$ 78.4</b>

Note: With the transfer of LCC to the KCTCS in 2003-04 FY, gifts to LCC stopped being reflected in UK's Private Giving statistics.





# GRANT and CONTRACT AWARDS (In Millions)

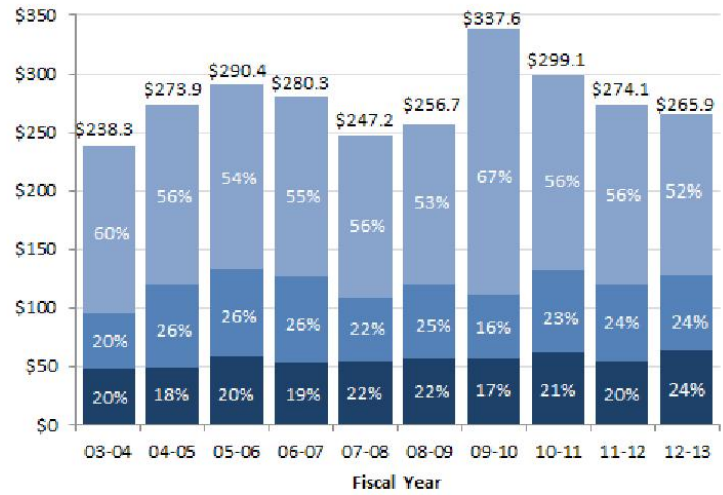
## 2012-2013

### By Category of Support

Instruction	\$11.9
Research	\$181.2
Public Service	\$70.4
Other	\$2.4
<b>Total</b>	<b>\$ 265.9</b>

### By Source

Federal	52%
State	24%
Business, Industry, Other	24%



Note: With the transfer of LCC to the KCTCS in 2003-04 FY, awards to LCC stopped being reflected in UK's Grant and Contract Awards statistics.





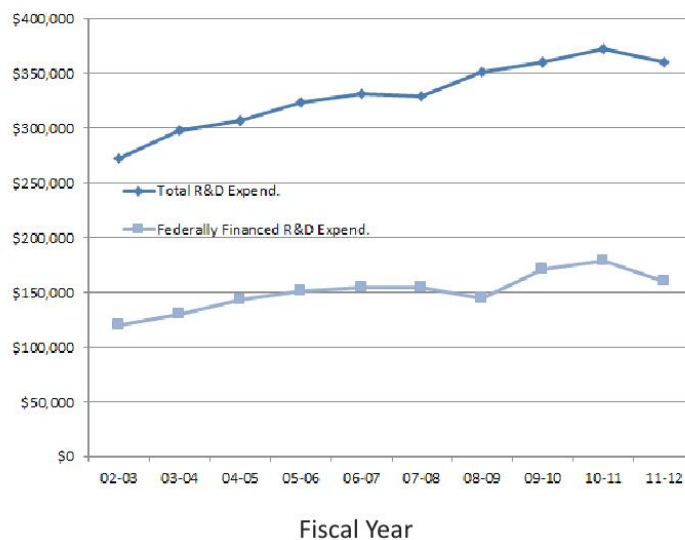
# RESEARCH and DEVELOPMENT (In Thousands)

Fiscal Year	Total R&D Expenditures*	Federally Financed R&D Expenditures*
2012	\$ 360,774	\$ 159,678
2011	372,932	179,161
2010**	359,944	171,528
2009	351,943	144,221
2008	329,354	154,260
2007	331,606	154,688
2006	323,958	151,238
2005	306,653	142,794
2004	297,610	129,887
2003	272,062	120,003

\*As reported to the National Science Foundation for science and engineering disciplines; expenditures for FY 2008 and FY 2009 have been revised.

\*\* The FY 2010 Expenditure amount includes all fields, not just science and engineering.

### Research and Development Expenditures



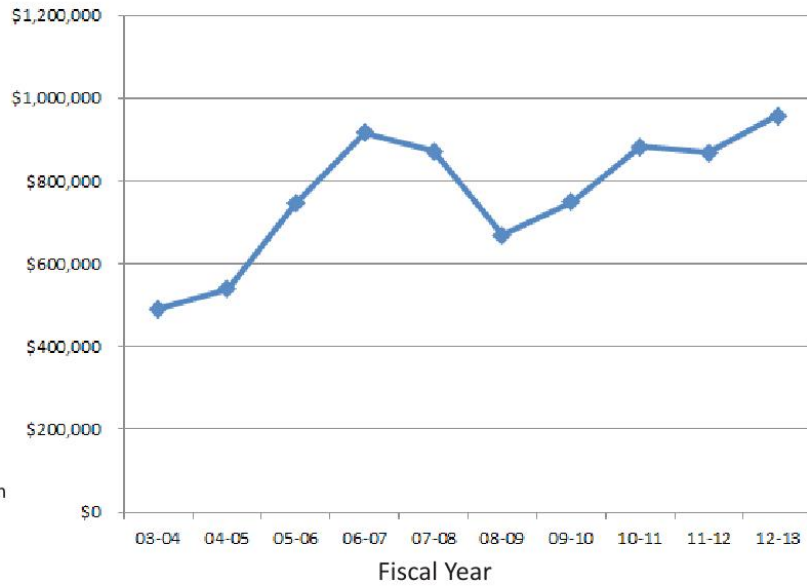


# UNIVERSITY ENDOWMENT (In Thousands)

Fiscal Year	Market Value
2013	\$ 957,784
2012	868,316
2011	881,860
2010	748,676
2009	668,008
2008	871,861
2007	916,590
2006	746,114
2005	538,384
2004	491,098

Note: In 2006, the Chandler Medical Center University Hospital Quasi-Endowment Fund for \$150 million was established, accounting for the large increase over the 2005 total.

Market Value of University Endowment





# LIBRARY COLLECTIONS

	<b>2010-2011</b>	<b>2011-2012</b>	<b>2012-2013</b>
Volumes Held	3,980,246	4,023,142	4,107,758



The UK Libraries are home to more than 4 million volumes. UK Libraries' collections also include access to approximately 450 licensed networked electronic databases, approximately 71,000 full-text electronic journals and 650,000 electronic books accessible in the UK Libraries 12 service points and also available to faculty and students off campus via a proxy server. In addition, the collections include: 264,000 maps; over 200 current state, national and international newspapers; 9,000 interviews in the Louis B. Nunn Center for Oral History; the University Archives and Records Program; the Wendell H. Ford Public Policy Research Center; the Audio-Visual Archives; the Bert T. Combs Appalachian Collection; the Public Policy Archives; the Rare Book Collection which includes the W. Hugh Peal Collection of 19th century English and related literature; and the Preservation Reformatting Center. Digital Library Services identifies and implements digital library initiatives that support teaching and research. The Digital Library Service also makes unique holdings available to the world and creates digital content for the Kentucky Digital Library including electronic texts, digitized photographs, images and archival finding aids. UK Libraries is a regional depository for U.S. government publications, and also a depository for Canadian government publications and European Union publications. British Parliamentary Papers, Kentucky government publications, and technical reports from federal agencies are selectively collected.



# CURRENT BENCHMARK INSTITUTIONS

Michigan State University

Ohio State University

University of Arizona

University of California – Davis

University of Florida

University of Iowa

University of Michigan – Ann Arbor

University of Minnesota – Twin Cities

University of Missouri - Columbia

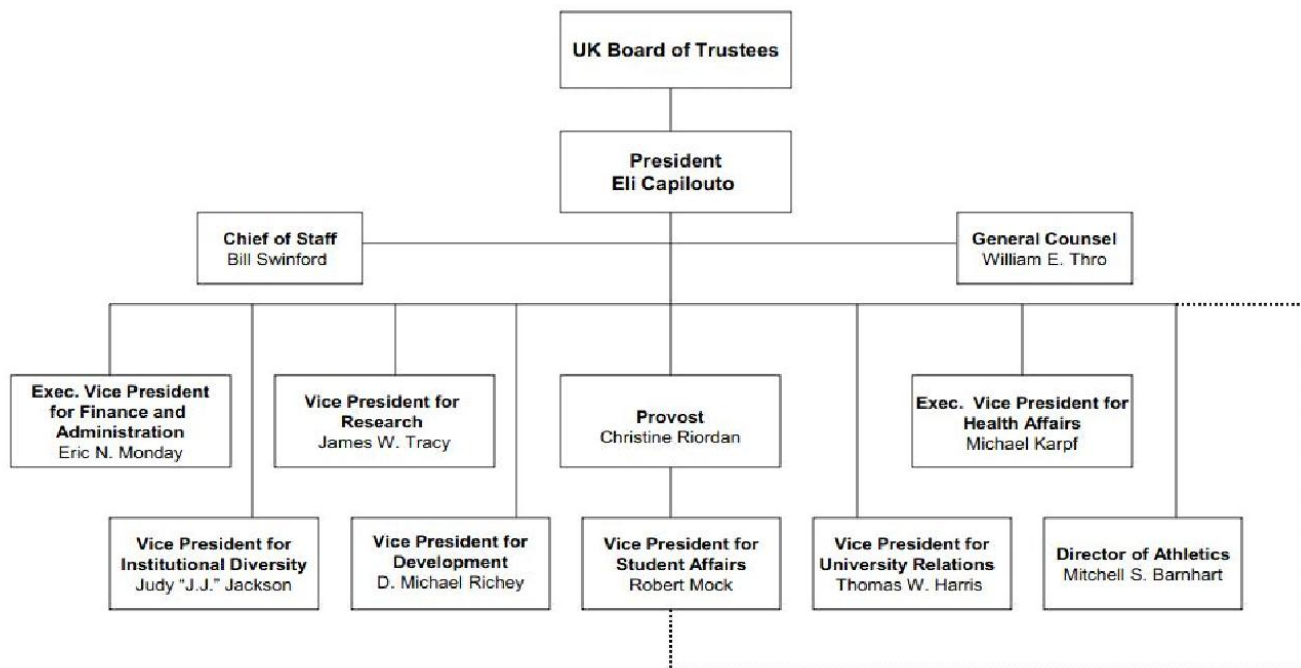
University of North Carolina – Chapel Hill

University of Wisconsin – Madison





# ADMINISTRATIVE ORGANIZATION





# BOARD of TRUSTEES

<b>C.B. Akins, Sr.</b>	Lexington	(2017)	<b>Carol Martin“Bill” Gatton</b>	Tennessee	(2015)
<b>James H. Booth</b>	Lovely	(2019)	<b>David V. Hawpe</b>	Louisville	(2019)
<b>William C. Britton</b>	Louisville	(2017)	<b>Kelly Sullivan Holland</b>	Alumni Member	(2018)
<b>Edward Britt Brockman</b>	Louisville	(2014)	<b>Terry Mobley</b>	Lexington	(2016)
<b>Sheila Brothers</b>	Staff Member	(2013)	<b>Roshan Palli</b>	Student Member	(2014)
<b>Mark P. Bryant</b>	Paducah	(2018)	<b>C. Frank Shoop</b>	Lexington	(2014)
<b>Jo Hern Curris</b>	Alumni Member	(2014)	<b>James W. Stuckert</b>	Prospect	(2015)
<b>Angela L. Edwards</b>	Louisville	(2019)	<b>Irina Voro</b>	Faculty Member	(2014)
<b>William Stamps Farish, Jr.</b>	Versailles	(2016)	<b>John F. Wilson</b>	Faculty Member	(2013)
<b>Oliver Keith Gannon</b>	Mt. Sterling	(2016)	<b>Barbara Young</b>	Lexington	(2015)



# ADMINISTRATIVE HISTORY

- 1865** Agricultural and Mechanical College (A&M) established as part of Kentucky University
- 1869** James K. Patterson became President of A&M
- 1878** A&M separated from Kentucky University
- 1882** A&M moved to current location in Lexington
- 1885** Ag. Experiment Station opened
- 1889** College of Agriculture established
- 1908** College of Arts and Sciences and College of Law established; A&M name changed to "State University, Lexington, Kentucky"
- 1909** University Library established
- 1911** Henry S. Barker became President of State University
- 1916** State University renamed University of Kentucky
- 1917** Frank L. McVey became President of UK; Graduate School established
- 1918** College of Engineering established
- 1923** College of Education established
- 1925** College of Business and Economics established
- 1941** Herman L. Donovan became President
- 1947** College of Pharmacy moved to UK
- 1956** Frank G. Dickey became President
- 1957** Ashland Extension Center established
- 1960** Medical Center established; College of Medicine admitted first class; College of Nursing admitted first class; Henderson Extension Center and Southeast Extension Center established
- 1962** College of Dentistry admitted first class; University Hospital opened
- 1963** John W. Oswald became President
- 1964** Community College System established under UK; College of Architecture established
- 1965** Lexington Technical Institute (LTI) established
- 1966** College of Allied Health Professions established
- 1967** College of Home Economics established
- 1968** Albert D. Kirwan became President
- 1969** College of Social Work established; Otis A. Singletary became President
- 1970** College of Library and Information Science established
- 1976** College of Communications and College of Fine Arts established
- 1982** University reorganized with a Central Administration and three sectors headed by Chancellors (Lexington Campus, Medical Center, and Community College System)
- 1984** LTI became Lexington Community College
- 1987** David P. Roselle became President
- 1990** Charles T. Wethington, Jr. became President
- 1993** College of Communications and Information Studies established
- 1998** William T. Young Library opened; All Community Colleges (except LCC) transferred to the KCTCS
- 2001** Lee T. Todd, Jr. became President; University reorganized with a Provost model
- 2002** College of Design established
- 2004** LCC transferred to the KCTCS; College of Public Health established
- 2011** Eli Capilouto became President



# VALUES

The University of Kentucky is guided by its core values:

- *Integrity*
- *Excellence*
- *Mutual Respect and Human Dignity*
- *Diversity and Inclusion*
- *Academic Freedom*
- *Personal and Institutional Responsibility and Accountability*
- *Shared Governance*
- *A Sense of Community*
- *Work-life Sensitivity*
- *Civic Engagement*
- *Social Responsibility*

-- Adopted by the Board of Trustees, January 23, 2007 and modified on March 27, 2012.







