

## **TCE Fate & Transport Project: Data Quality Objectives Process Presentation**

Prepared by  
Kentucky Research Consortium for Energy and Environment  
233 Mining and Minerals Building  
University of Kentucky, Lexington, KY 40506-0107

Prepared for  
United States Department of Energy Portsmouth/Paducah Project Office  
Acknowledgment: This material is based upon work supported by the Department of Energy under  
Award Number DE-FG05-03OR23032.



**May 2007**

# **TCE Fate & Transport Project: Data Quality Objectives Process Presentation**

Presented by  
Steve Hampson, Associate Director  
Kentucky Research Consortium for Energy and Environment  
233 Mining and Minerals Building University of Kentucky, Lexington, KY 40506-0107

and

Hope Lee  
North Wind Environmental

Presentation to  
Federal Remedial Technology Roundtable  
Washington, DC

**May 2007**



**Portsmouth/Paducah Project Office**

**Paducah TCE Fate & Transport Project**

**Data Quality Objectives Process**

**May 2, 2007**

***Presented by***

**Steve Hampson, Associate Director**

Kentucky Research Consortium for Energy and the Environment

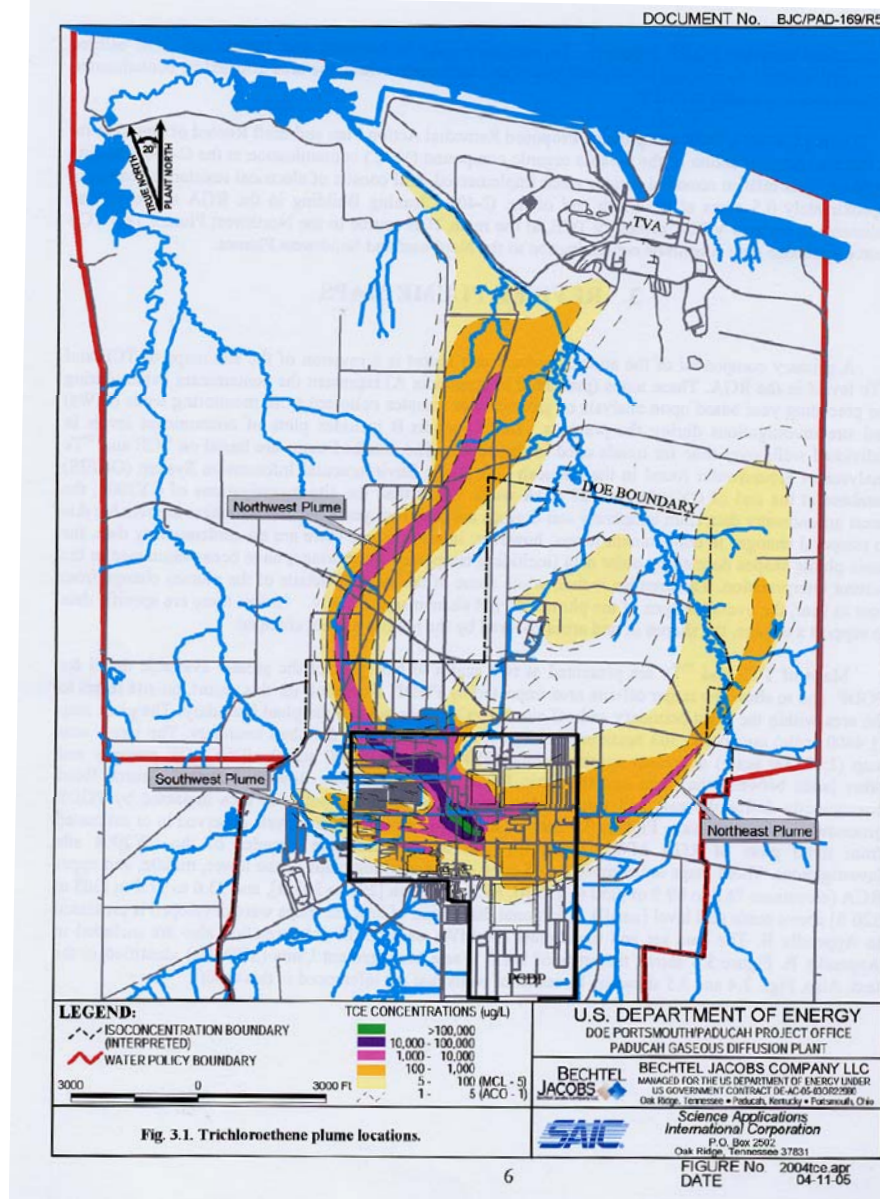
University of Kentucky

and

Hope Lee, North Wind Environmental



# Background PGDP Site & Plumes





# Background

## Historical TCE Attenuation Activities/Information

- **PGDP Groundwater Flow & Transport Models**
  - MODFLOW & MODFLOWT
  - Development 1990 – 1999
  - Original models applied no degradation or “half-life” to TCE in aquifer
- ***Evaluation of Natural Attenuation Processes for TCE and Tc-99 in the Northwest and Northeast Plumes*** (Lockheed Martin Energy Systems, 1997)
  - Evaluated RGA Geochemistry
  - Evaluated Biological and Abiotic Processes based on existing site monitoring data
  - Estimated TCE half-life range from 9.4 to 26.7 years
  - Applied TCE half-life of 26.7 years to sources and all dissolved phase plume concentrations in MODFLOW & MODFLOWT Models
- ***Chlorine Isotope Investigation of Natural Attenuation in an Aerobic Aquifer*** (Sturchio, Claussen, et.al., 1999)
  - Re-evaluation of parameters in Lockheed Martin Energy Systems, 1997
- ***Groundwater Operable Unit Feasibility Study*** (DOE, 2001)
- ***Southwest Plume Site Investigation*** (DOE, 2004)
  - 1<sup>st</sup> Order Decay Calculations revisited
  - Used <sup>99</sup>Tc to estimate TCE half-life range from 3.2 to 11.3 years in aerobic aquifer



# Background

- Regulators and technical community concerned degradation rates for TCE attenuation/degradation developed thru 2005 not well supported
- Need for site to identify & quantify TCE Fate & Transport parameters in order to proceed with assessment of:
  - Long term environmental impacts
  - Long term risks
  - Remedial options
- KRCEE asked by DOE-Portsmouth/Paducah Project Office (PPPO) to assemble a Project Team to address TCE Fate and Transport
  - Project team started Summer 2006
  - Application of DQO Process
  - Degradation rate of TCE in the RGA is only one of several parameters affecting fate and transport being addressed



# TCE Fate & Transport Project

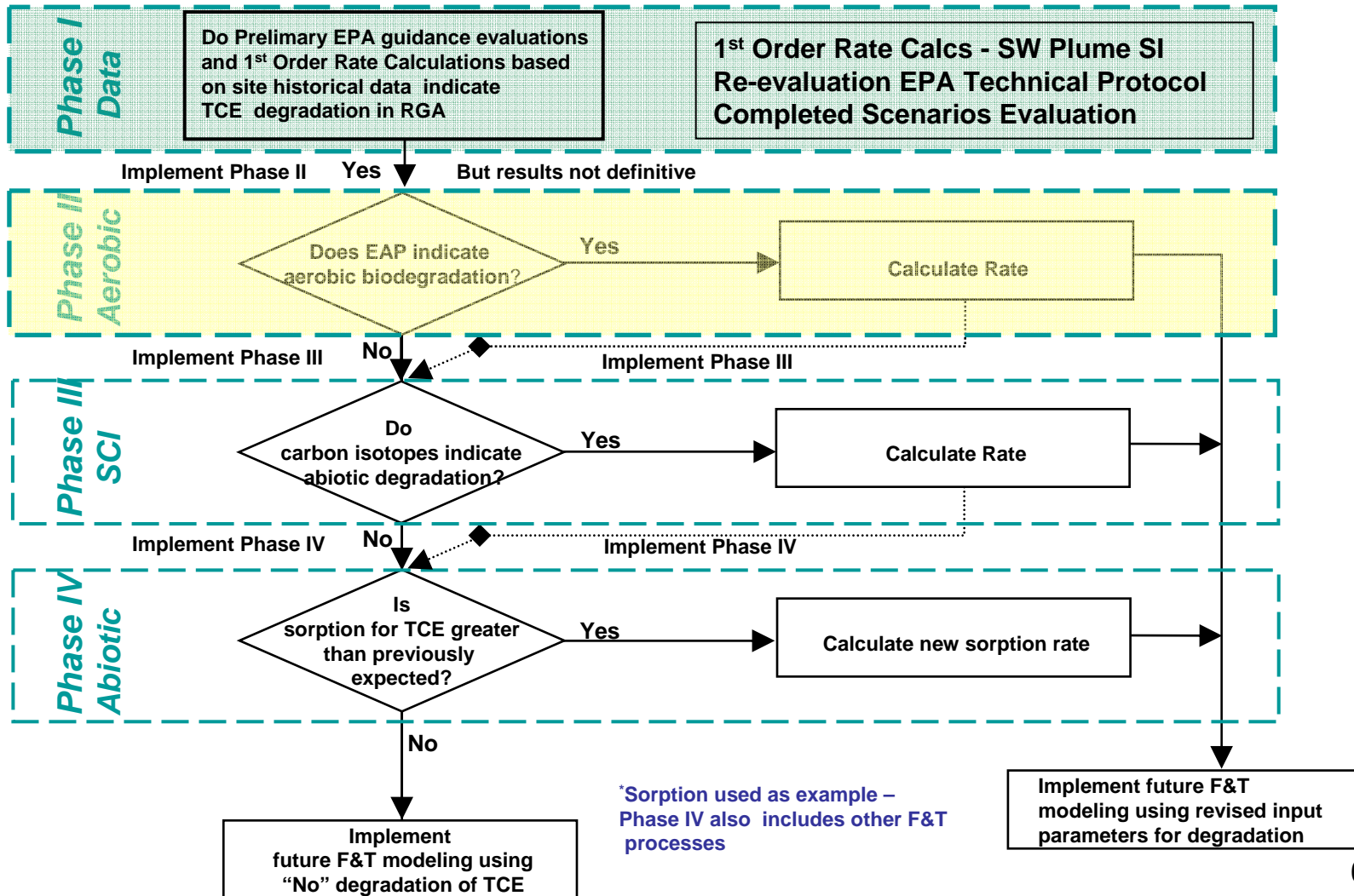
## PROJECT TEAM

<b>Organization</b>	<b>Representatives</b>
<b>DOE-PPPO</b>	<b>Rich Bonczek (PPPO Tech Lead) Dave Dollins (PGDP GWOU PM)</b>
<b>KRCEE</b>	<b>Steve Hampson, John Volpe</b>
<b>USEPA Region IV</b>	<b>David Williams</b>
<b>Kentucky Division of Waste Mgmt</b>	<b>Ed Winner, Todd Mullins</b>
<b>DOE-EM</b>	<b>Beth Moore</b>
<b>Savannah River National Laboratory</b>	<b>Brian Looney</b>
<b>North Wind Environmental</b>	<b>Hope Lee</b>
<b>Paducah Remediation Services</b>	<b>Bryan Clayton, Ken Davis</b>
<b>Navarro Engineering</b>	<b>Bruce Phillips, Tracey Fitzgerald</b>



# TCE Fate & Transport Project

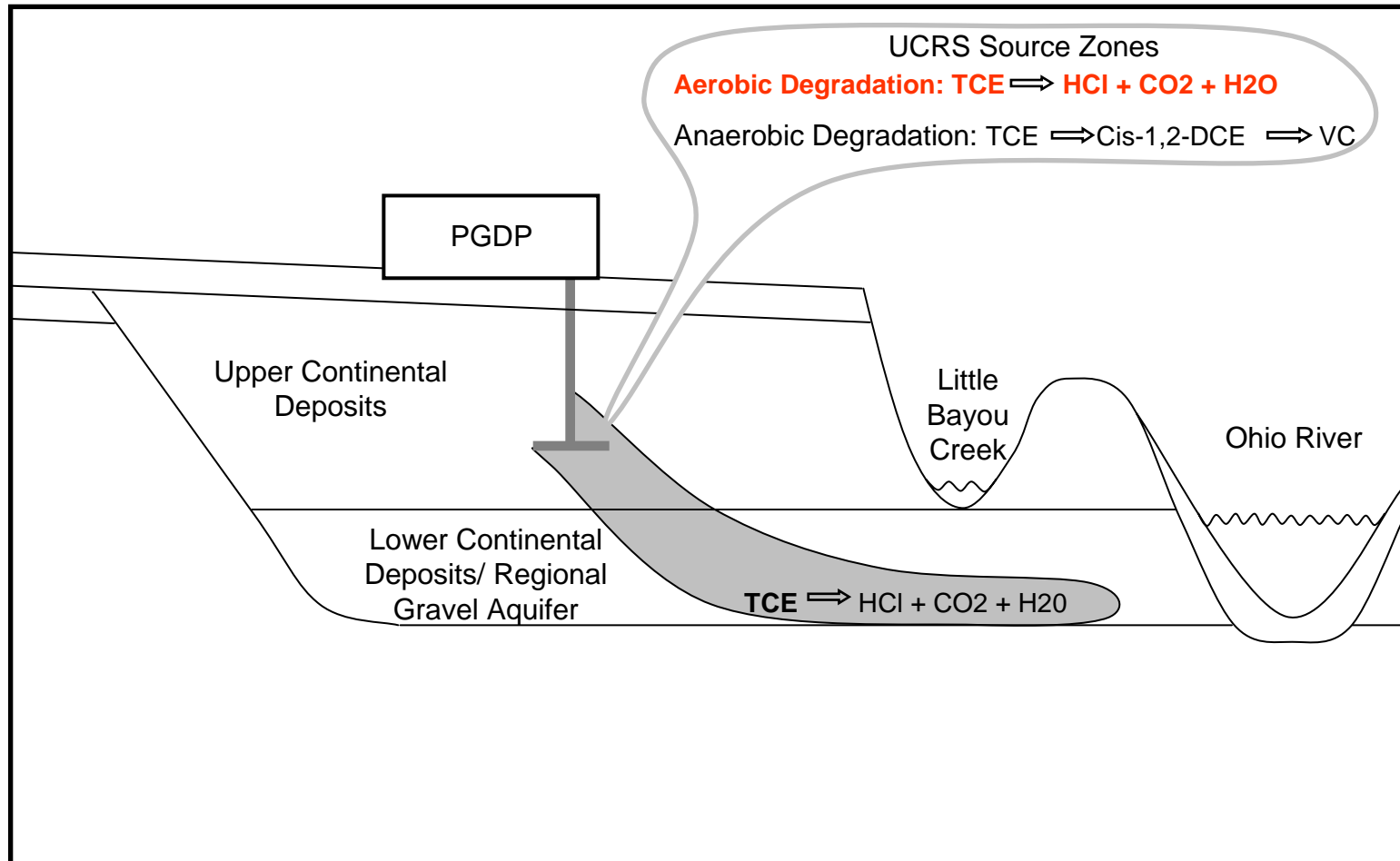
## 4 Phased Project Approach





# Background

## GW Conceptual Model - Biodegradation



Trichloroethene Migration (Primary Source and Dissolved-Phase Plume)

Regional Gravel Aquifer: Aerobic Environment



# TCE Fate & Transport Project Phase I

## Project Team Activities (Data Assessment/Research)

- ***Decision-Making Framework Guide for the Evaluation and Selection of Monitored Natural Attenuation Remedies at Department of Energy Sites***
- ***Assessing Aerobic Natural Attenuation of Trichloroethene at Four DOE Sites*** (Bob Starr et.al., 2005 WM '05 Conference)
  - Assessment of site conditions in RGA at PGDP
- ***Technical Protocol for Evaluating Natural Attenuation of Chlorinated Solvents in Ground Water***
  - Re-evaluation indicated that anaerobic TCE degradation processes not likely to be widespread in RGA
  - Recalculate 1<sup>st</sup> order rate constant (SW Plume SI)
- **Scenarios Evaluation (SRNL, 2006)**
  - Scenarios development
    - Assess site contaminant, physical, geochemical conditions
  - Scenarios evaluation
    - Identify likely degradation processes – Aerobic Cometabolism



# TCE Fate & Transport Project Phase II - Aerobic Degradation

## ***Natural Attenuation***

- Increasingly accepted as a remedial alternative for organic compounds in GW
- Relies on processes such as dispersion, dilution, and biological degradation to reduce contaminants
- Focus of most regulatory documents is anaerobic reductive dechlorination, however due to large size and aerobic conditions of many contaminated aquifers in DOE and DoD complexes, other biological mechanisms are receiving reater attention

## ***Cometabolism***

- Fortuitous degradation of a compound that is not the organisms primary energy-yielding substrate
- Reactions are catalyzed by microbial enzymes and yield no carbon or energy to the cells
- Chlorinated solvents can be oxidized by a wide range of oxygenases

*There are few field sites where MNA has been evaluated or implemented where cometabolic or aerobic processes have been considered*



# TCE Fate & Transport Project Phase II - Aerobic Degradation DQOs

## **Problem Statement (Aerobic Biodegradation)**

- The Paducah site has contaminated groundwater. The purpose of the proposed work is to demonstrate whether sustainable trichloroethene (TCE) biodegradation occurs within the RGA under aerobic aquifer conditions. Biodegradation needs to be characterized and assessed, and the resources necessary to evaluate this process need to be identified.



# TCE Fate & Transport Project

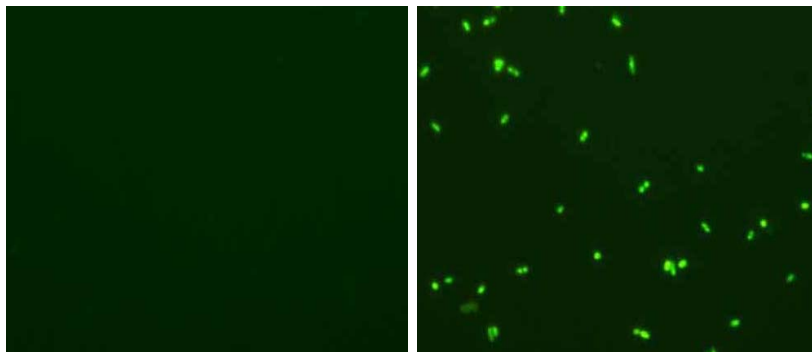
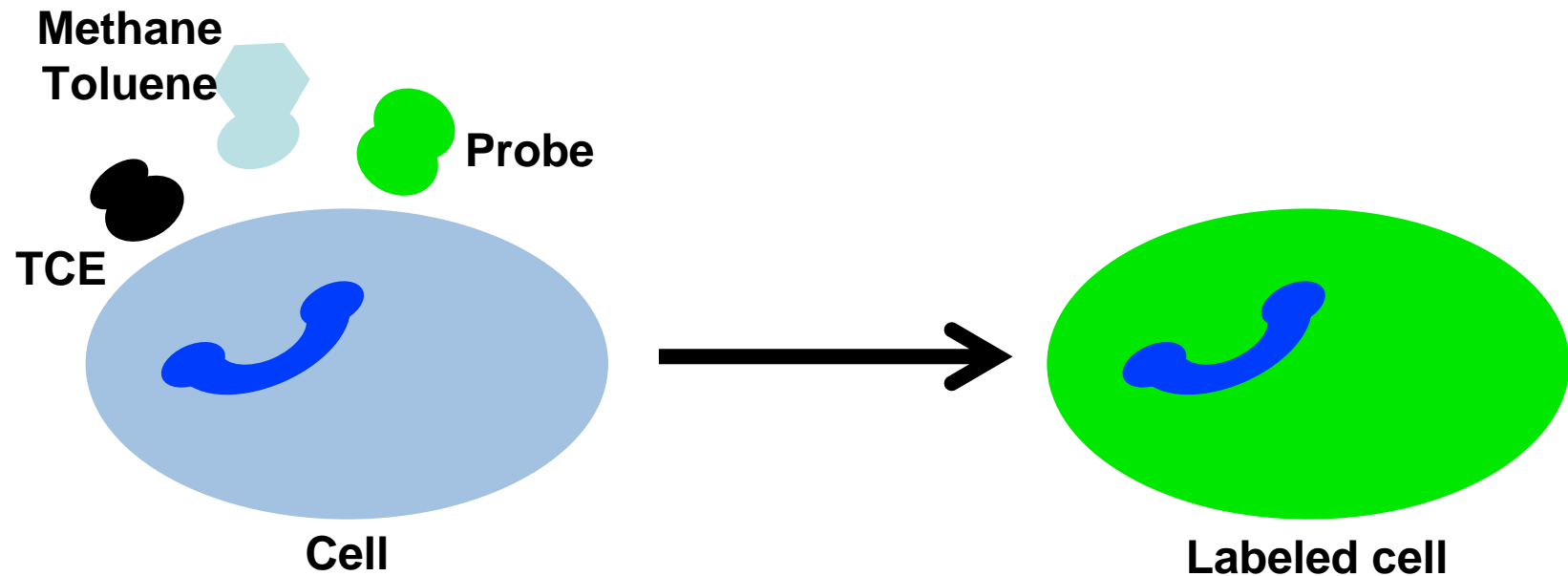
## Phase II - Aerobic Degradation DQOs

### Range of Decision / Estimation Statements Developed

- **#1** Based on the use of “oxygenase” specific enzyme activity probes, determine whether bacteria capable of aerobically biodegrading TCE are present in the RGA.
- **#2** Based on the use of stable carbon isotope (SCI) fractionation tests, determine whether SCI supports the occurrence of aerobic degradation and/or other biotic/abiotic degradation processes.
- **#3** Estimate whether the distribution and number of bacteria are sufficient to significantly biodegrade the plumes
- **#4** Determine whether conditions (e.g., bioavailable and sustainable substrates) in the RGA are conducive for ongoing and sustainable aerobic biodegradation of TCE
- **#5** Based upon a comparison of the calculated biodegradation rate, or rate range, to values in literature, either accept the calculated rate for future modeling or assess the team’s confidence in the unsupported results



# What is an Enzyme Activity Probe?



- Alternate substrates for TCE enzymes
- Non-fluorescent substrate = fluorescent product
- Quantifiable product, direct evidence of activity
- Measure activity in situ



# TCE Fate & Transport Project

## Phase II – Aerobic Degradation DQOs

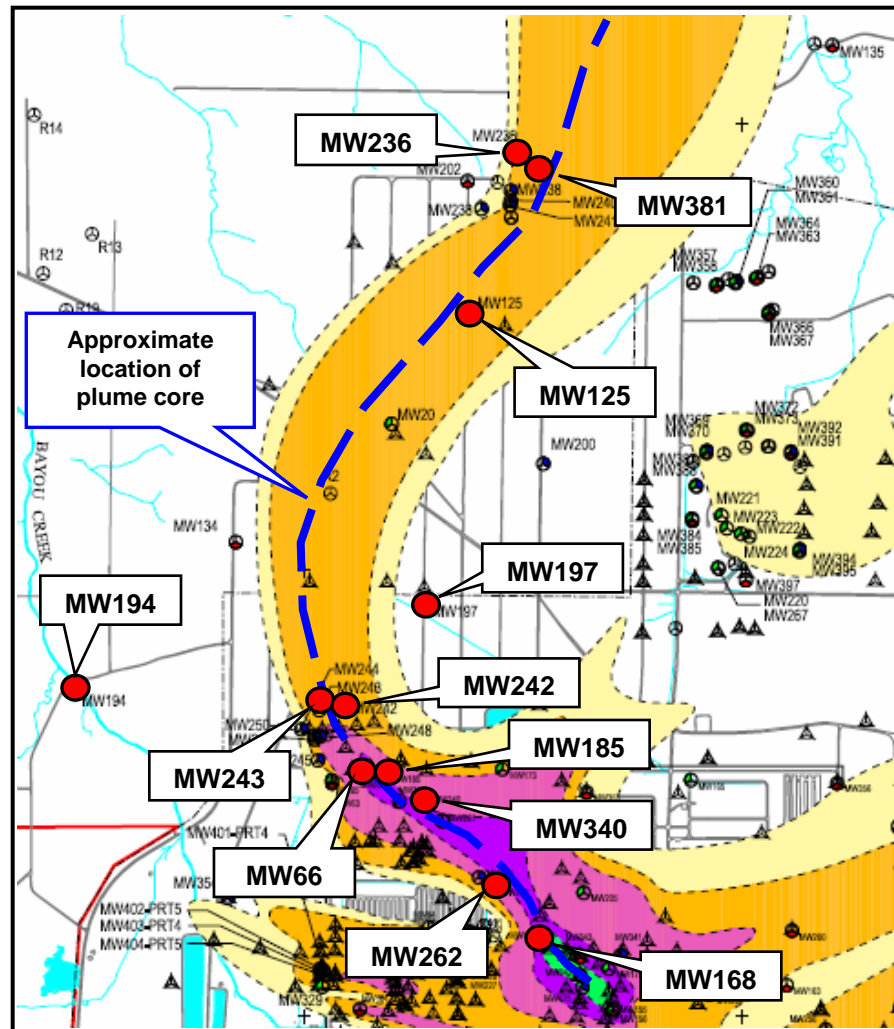
### Decision Rules

- The bacterial cell count per well must be greater than  $10^3$ /ml. If the cell count in any well is less than  $10^3$ /ml, the well is considered to have no aerobic bacteria activity capable of TCE degradation.
- Greater than or equal to half (50%) of the wells in the plume must contain bacteria having an “oxygenase” enzyme capable of aerobically degrading TCE in order to conclude that aerobic processes are occurring throughout the plume.
- If greater than 50% of the EAP analyses indicate bacteria having an “oxygenase” enzyme capable of degrading TCE, then the spatial relationship between the monitoring wells with positive results will be examined to estimate the impact of biodegradation on the plume.
- If the 50% level is not reached, it will be assumed that aerobic bacteria are not appreciably contributing to degradation in the plume from which the samples were collected (does not mean that biodegradation is not occurring, but biodegradation alone is insignificant in **its** impact on the areal extent of the **plume**).



# TCE Fate & Transport Project Phase II – Aerobic Degradation DQOs

## Monitoring Wells Proposed for Sampling





# TCE Fate & Transport Project

## Phase II – Aerobic Degradation DQOs

### Activities Schedule

- **Phase II - Aerobic Degradation Investigation**
  - Collect samples (May - June)
  - Run analyses (May - September)
    - Preliminary information on presence (June - September)
    - Microcosm study (August - September)
  - Reporting (October - December)
  
- **Phase III - Stable Carbon Isotope Evaluation**
  - Finalize DQOs and Scoping (May - June)
  - Sample collection (May – June)
  
- **Phase IV – Abiotic Degradation Evaluation**
  - Finalize DQOs and Scoping (May - June)
  - Conduct project activities (Planning)
  - Complete Abiotic Degradation Evaluation (Planning)



## Contact Information

- Steve Hampson, Associate Director  
University of Kentucky - KRCEE  
(859) 533-0633; [Steve.Hampson@ky.gov](mailto:Steve.Hampson@ky.gov)
- Brian Looney, Ph.D.  
SRNL  
(803) 725-3692; [Brian02.looney@srnl.doe.gov](mailto:Brian02.looney@srnl.doe.gov)
- Beth Moore, FRTR Contact  
DOE – EM  
(202) 586 - 6334; [Beth.Moore@em.doe.gov](mailto:Beth.Moore@em.doe.gov)
- Hope Lee, Ph.D.  
North Wind Inc.  
(208) 557-7820; [hlee@northwind-inc.com](mailto:hlee@northwind-inc.com)
- Richard Bonczek, Ph.D.  
DOE-PPPO  
(859) 219 – 4051; [Rich.Bonczek@lex.doe.gov](mailto:Rich.Bonczek@lex.doe.gov)