

# Housing Public/Private



# HOUSING CONCEPT PLAN

Land Capacity Study By  
Ayers Saint Gross

# OVERVIEW



- **Preliminary framework to accommodate 7,000 – 9,000 beds in 4 districts each with supporting student life, open space, and parking**
- **Key Issues**
  - **Available Sites**
  - **Mix of units vs. capacity**
  - **Vision for Residential Life**
  - **Dining**
  - **Mobility: pedestrian, bicycle, transit, and parking**

# Available Sites



# Housing: Phase 1 and 2a



Blazer and Wildcat  
Haggin 1 and 2  
Cooperstown D and E      643

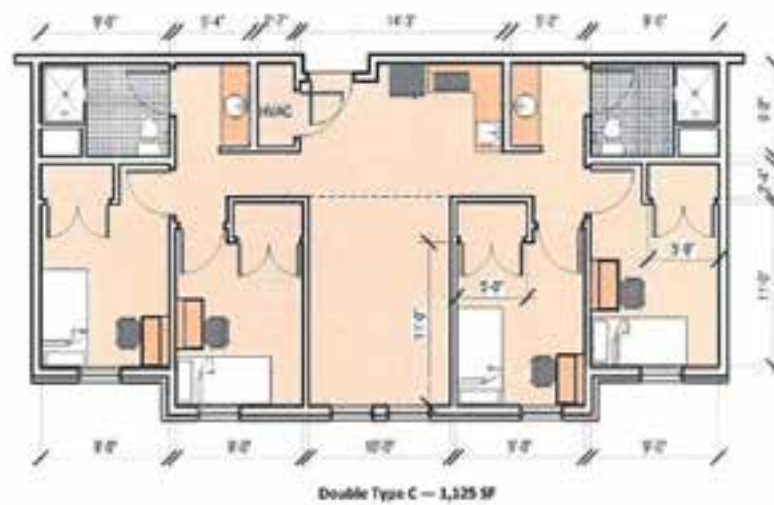
1,131  
925  
  
2,699 total

*6,301 more beds needed to achieve 9,000*

# Room Configurations



**Type A**  
193 sf/bed



**Type C**  
281 sf/bed  
46% more than A  
26% more than B



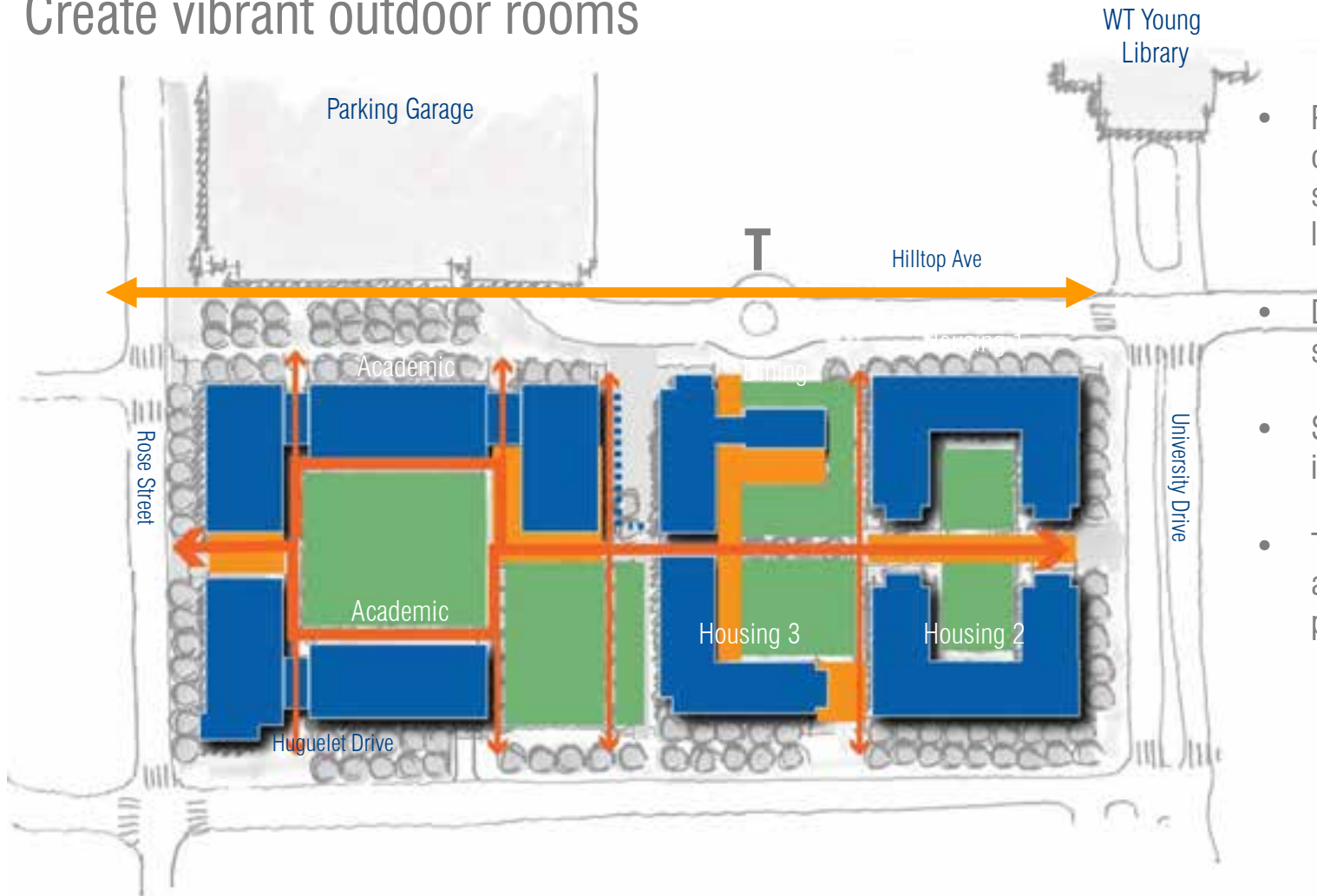
**Type B**  
224 sf/bed  
16% more than A



**Type D**  
345 sf/bed  
79% more than A  
54% more than B

# OPEN SPACE NETWORK

Create vibrant outdoor rooms



- Proposed buildings frame outdoor spaces, creating a series of courtyards and lawns
- Dining spills out into a patio space
- Streetscape improvements include lighting and trees
- Tree Alleys are located along Hilltop Avenue's pedestrian corridor



0 50' 100'

# Haggin Site



street view



# Haggin Site



courtyard view

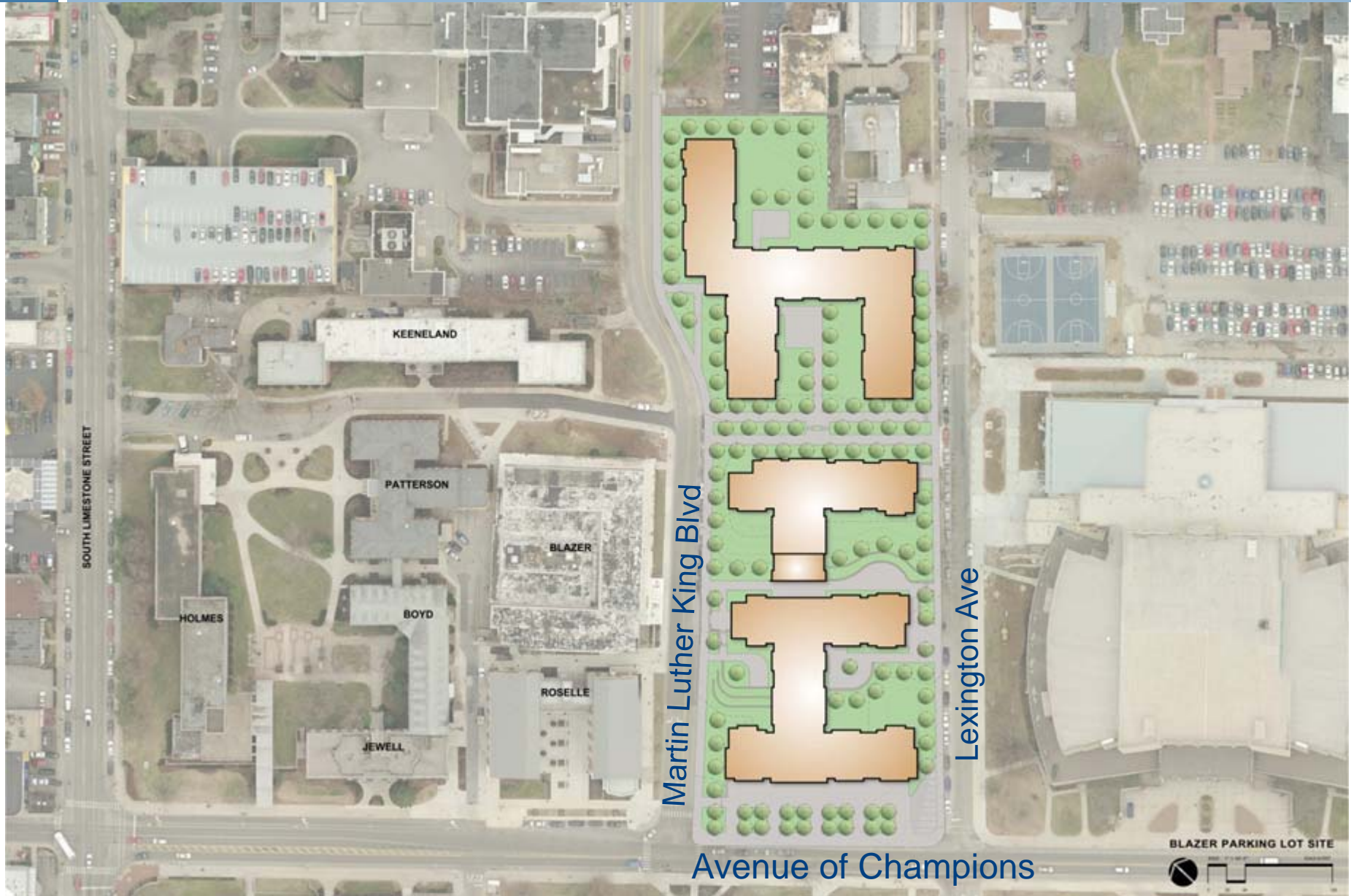
# Haggin Site



# Housing



# Blazer and Wildcat Sites



# Improve Streetscape and Pedestrian Safety



# North District Summary

- Accommodate 2,000+ beds total
- Activate key corner – Limestone and Avenue of Champions
- Improve streetscape and pedestrian safety on Avenue of Champions (longer term, City cooperation)
- Replace
  - Blazer Dining capacity (20,000 gsf)
  - Parking
- Significant utilities issues



# COOPERSTOWN



# COOPERSTOWN - PROPOSED





# Cooperstown - Geotech



# Greek Park



# Greek Park



**Greek: ΣΑΕ**



Greek: ΦΜ



**Greek: ΑΦ**



Greek: FH

[HTTP://www.uky.edu/masterplan/](http://www.uky.edu/masterplan/)

website