

Student and Academic Life

AE Town Hall
Provost Tim Tracy

July 14, 2016



UK Strategic Plan

- Strategic Plan priorities and initiatives for undergraduate education must drive actions and resource commitments:
 - Enhanced student success and retention
 - Teaching and learning innovation
 - Enrichment experiences



Student Success



Academic Success

Financial Stability

**Belonging and
Engagement**

Wellness

Initial Key Initiatives

- **Academic Success**
 - *Key Initiatives*
 - *Investment in Professional Advising*
 - *Integrated Tutoring Services*
- **Wellness**
 - *Key Initiatives*
 - *Investment in Counseling Services*
 - *Integrating Behavioral and Academic Alerts*
- **Financial Stability**
 - *Key Initiative*
 - *Provost Persistence Grants*
- **Belonging and Engagement**
 - *Key Initiative*
 - *Summer and First-Year Transitions*



Guiding Principles

- **Retention, Student Success & Well Being**
 - Place the successful matriculation and graduation of UG students at the center of the structure, including but not limited to the expanded use of student employment, when feasible.
- **Service to the College & Students**
 - Responsiveness
- **Collaboration & Integration**
 - No silos, matrix organization – no hierarchy – open communication, cut out bureaucracy
- **Efficiency & Proficiency of Organizational Design**
 - Work smarter, not harder, leverage technology, etc. (ideal levels of support staff, less supervisors, more front line)
- **Culture of Evidence – Evidence-based Practice**



Process to date

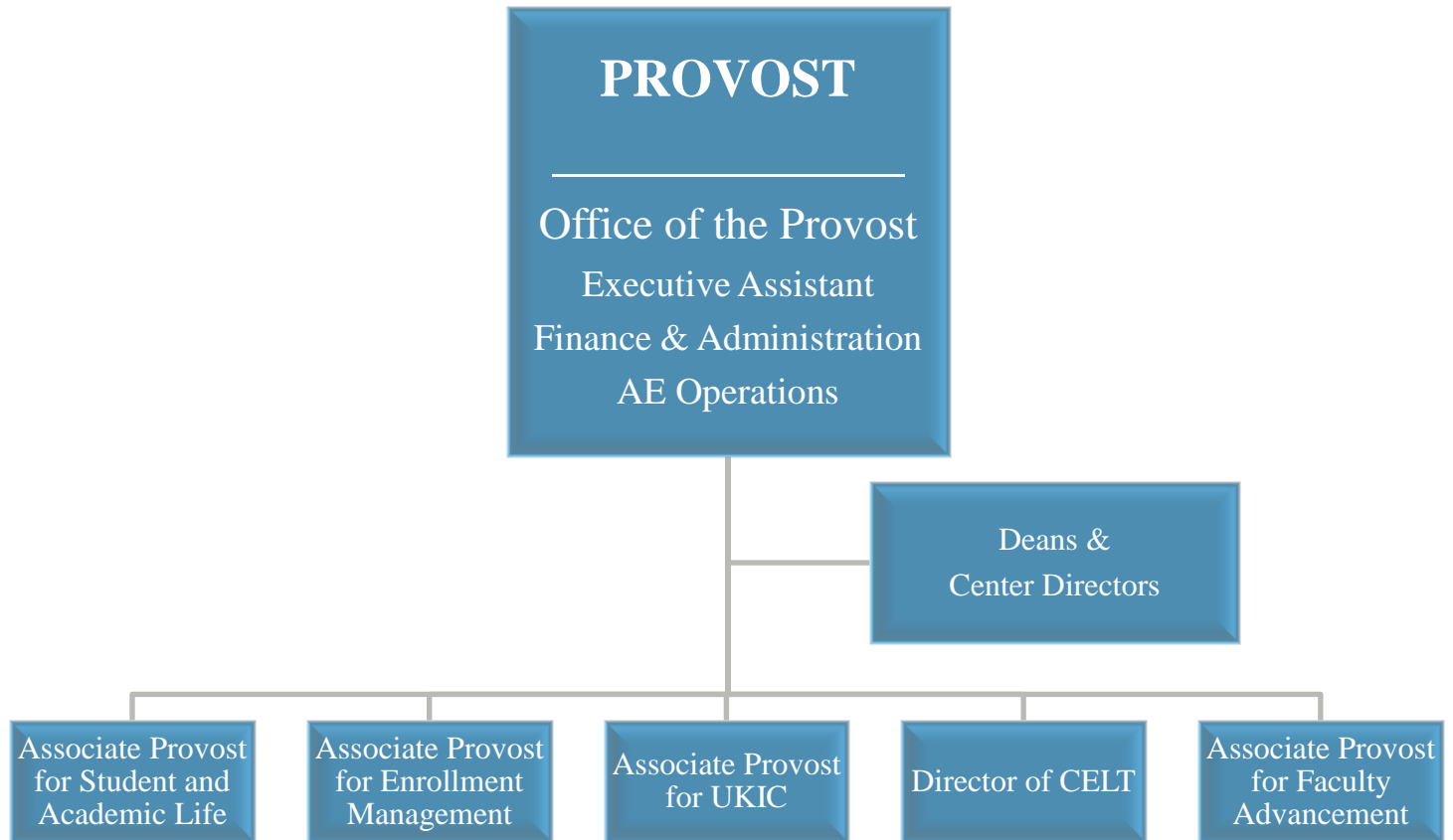
- Build out a functional chart and take stock of current resources linked to mission
- Develop new structure for Student and Academic Life
- Build out a business continuity plan
- Announce new organizational structure
- Implement



Questions?



Office of the Provost





Academic Excellence

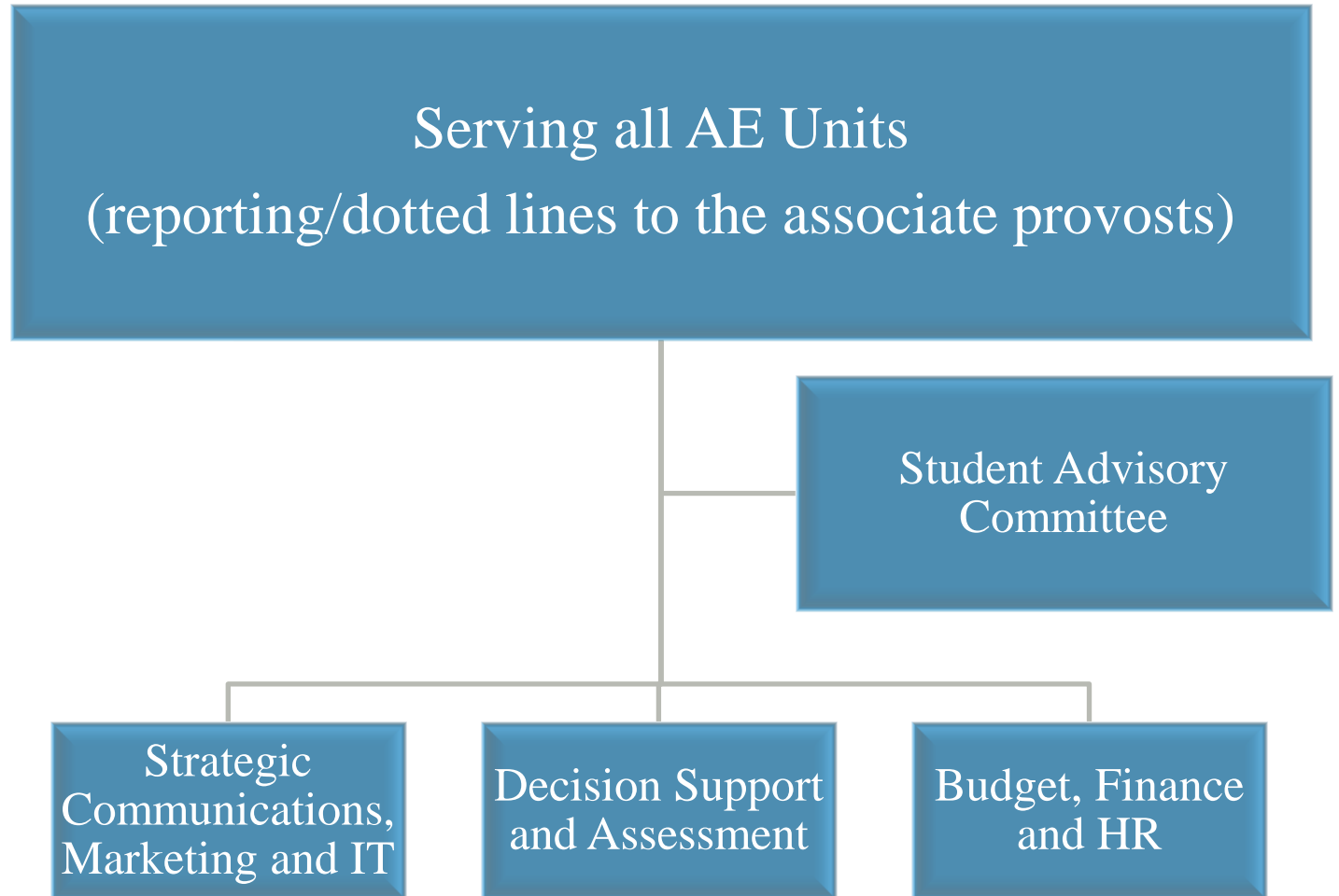
Student &
Academic Life

Enrollment
Management

UKIC

CELT

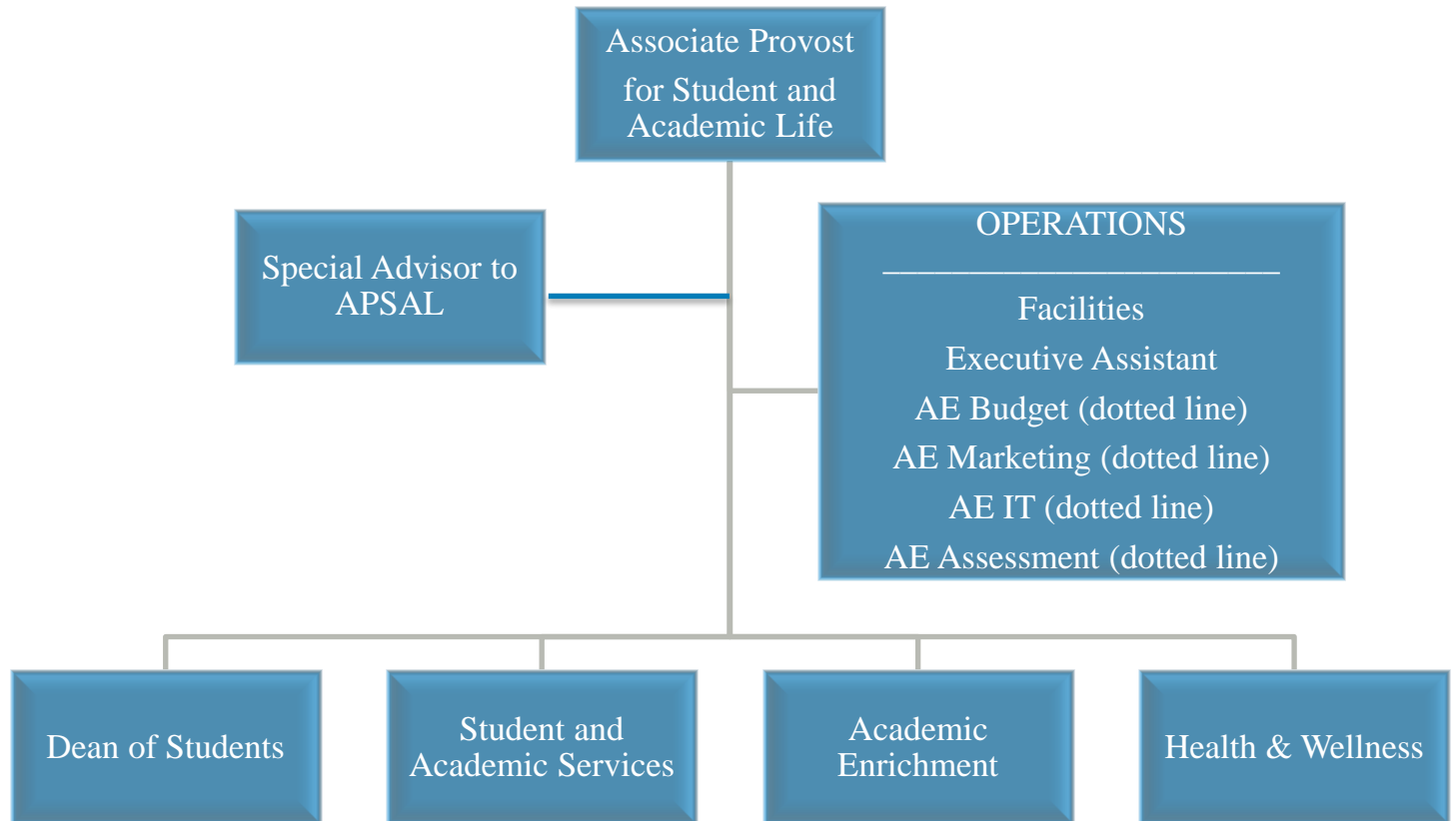
AE Operations



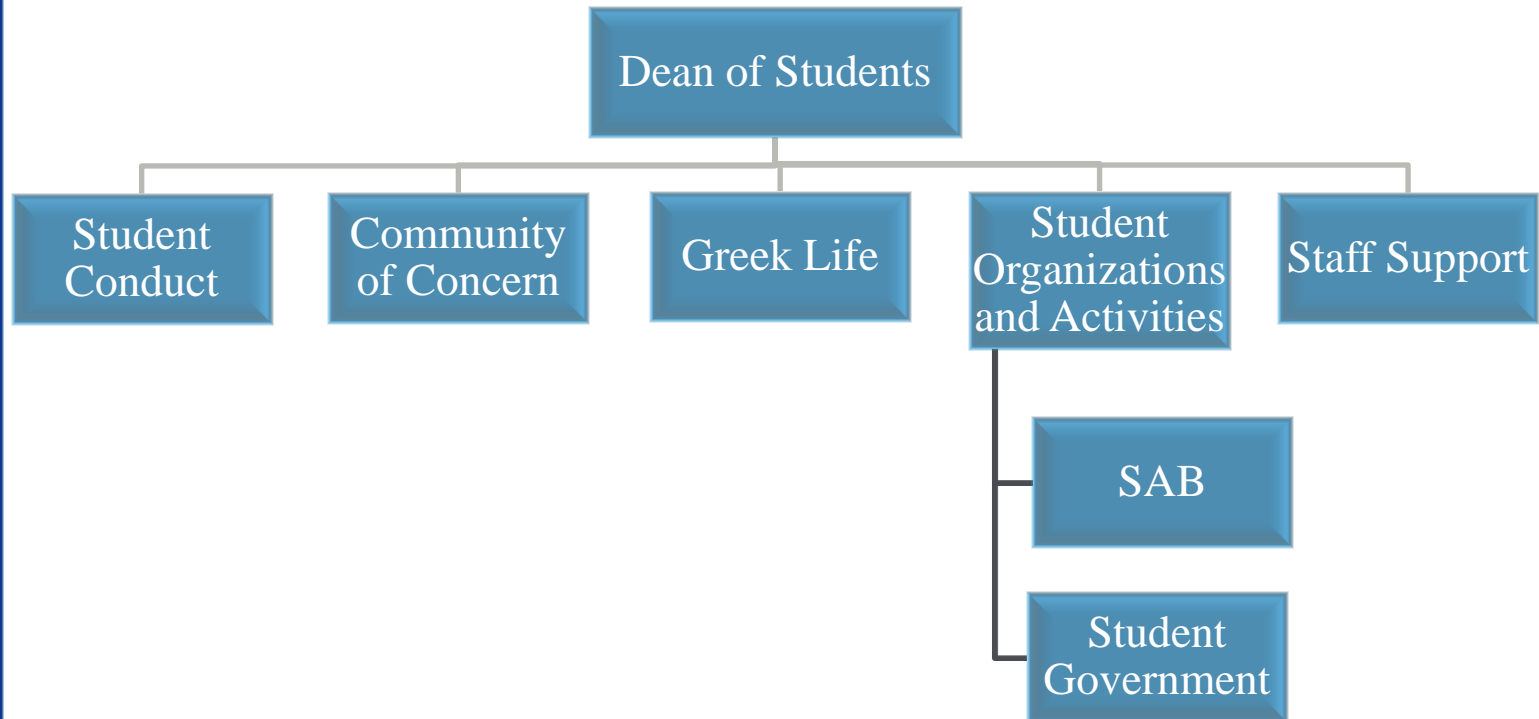
Questions?



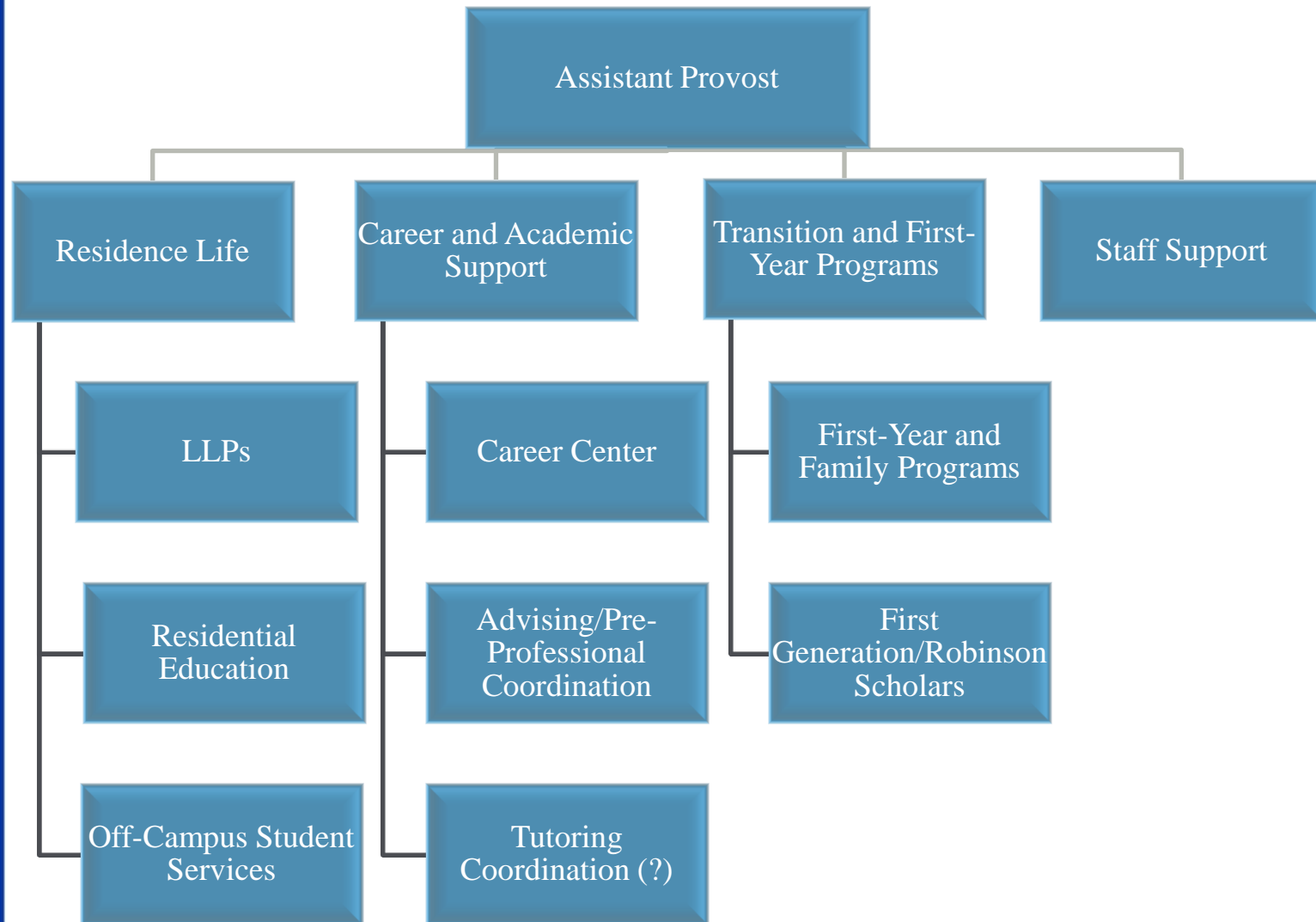
Student and Academic Life



Dean of Students



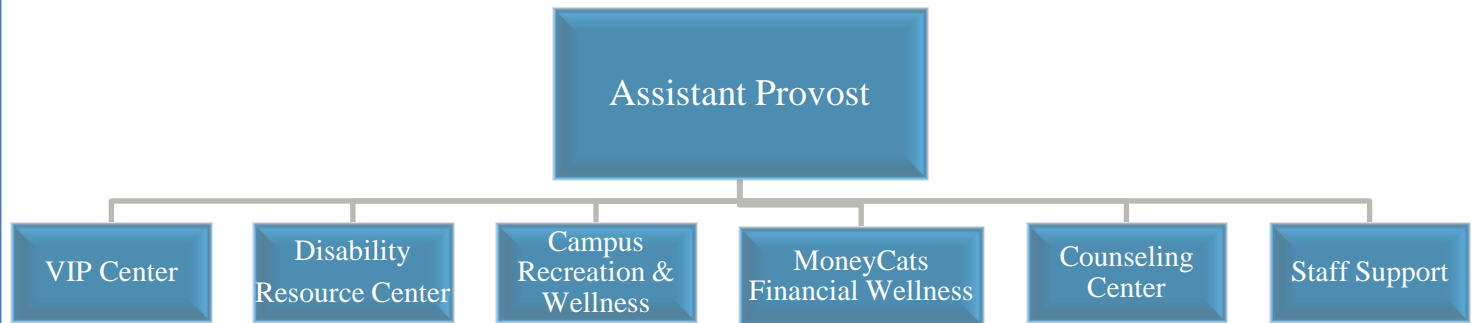
Student and Academic Services



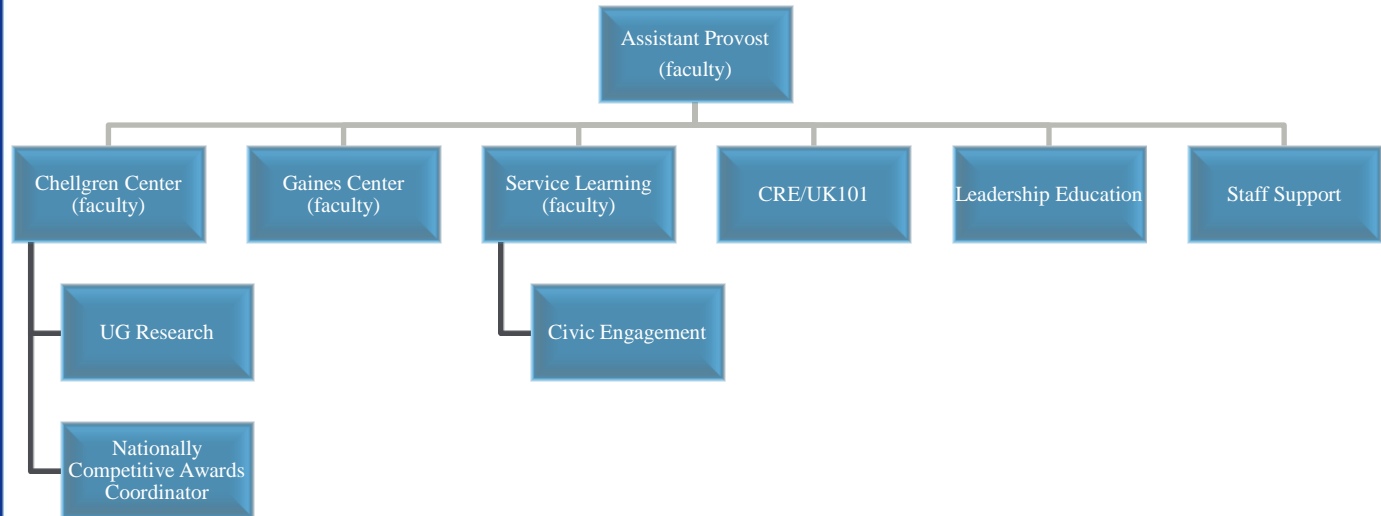
Questions?



Health and Wellness



Academic Enrichment



Questions?



Timeline

- August 1: Impacted SAL employees are notified of changes
- Sept. 1: New organizational structure takes effect
- Ongoing: Rose Martinelli working with Enrollment Management
- Fall: EM, UKIC and CELT
- Spring: Residence Life and Facilities



Contact

AETransform@uky.edu

The screenshot shows the University of Kentucky website. At the top, there is a blue navigation bar with links for 'UKY.EDU', 'UKNOW', 'SEEBLUE', 'LINK BLUE', 'SITE INDEX', 'DIRECTORY', 'SEARCH', and a search input field. Below the navigation bar, the University of Kentucky logo is displayed on the left, followed by the text 'Office of the Provost'. A vertical menu on the left lists various navigation options: Home, About, Units, Priorities for Academic Excellence, UK Strategic Plan, Transforming Academic Excellence (highlighted), Student Success, Research, Engagement, and Campus Transformation. Below this menu, there are sections for 'Current Major Initiatives' and 'UK4KY', each with an 'Apply Now >' and 'Give to UK >' button. At the bottom of the left sidebar are social media icons for YouTube, Facebook, and Twitter. The main content area features a large video player with the title 'What UK Realignment Means for Students' and a prominent text overlay: 'UK's Realignment Efforts Focus on Student Success'. Below the video player, there are five horizontal menu items: 'General FAQ', 'Business Continuity FAQ', 'Communication', 'UK4KY', and 'Contact Us'.

