



Campus Master Plan
Update 2012/13

UPDATE

TO

UK BOARD OF TRUSTEES

May 14, 2013

Public Meetings

AUDIENCE	# MEETINGS
Adjacent Neighborhoods	8
LFUCG Coordination	4
Charrettes	2
Faculty-Staff-Students	6
University Leadership	9
University Departments	15
Combined Public	1
Other	5
Total Meetings to Date	50



Euclid/Aylesford
Charrette



2 Open Houses
124 Attendees

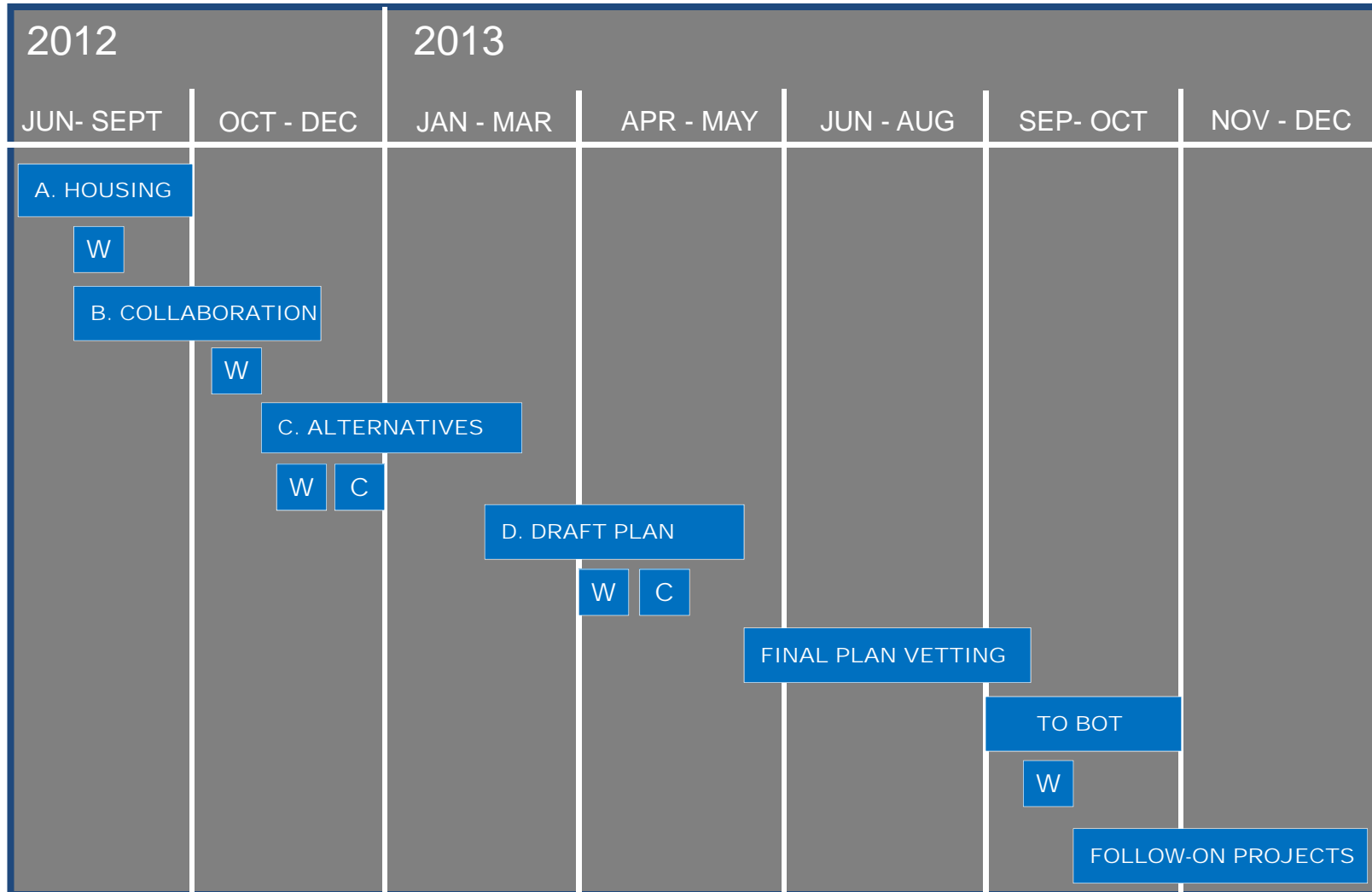


North Campus
Charrette

8 Neighborhood Meetings
Combined Attendance = 228



Work-plan and Schedule



W

Work Session

C

Charrette

OVERVIEW

PUBLIC PROCESS

- 50 meetings and counting
- Includes meetings with public; LFUCG; Charrettes; UK faculty, staff and students; internal committees
- Continual communication with adjacent neighborhoods, LFUCG and community organizations
- Open door policy
- Future meetings to be planned

ISSUES

- Preservation vs. renewal
- Pedestrian vs. vehicular mobility
- Future of surface parking lots
- Private retail, recreation and other services for off-campus students

NEIGHBORHOOD ISSUES

- Campus alcohol policy
- Greek population off-campus
- Parking
- Stabilization and buffering

COMPONENTS OF THE PLAN

- Community
- Academic Environment
- Student Life
- Landscape Structure
- Mobility
- Housing
- Sustainability

Issues

Physical Heritage

Preservation vs. Renewal

Ernst V. Johnson Buildings

1. Holmes Hall 1956**
2. Jewell Hall 1938**
3. Peterson Service Building 1950
4. The Old Student Union 1937
5. Memorial Coliseum 1950
6. Lafferty Hall 1939
7. Fine Arts Building 1950
8. Erikson Hall 1940**
9. Mineral Industries Building 1949**
10. Funkhouser Biological Science Building 1940**
11. Wenner-Gren Aeronautical Research Laboratory 1940*

** Potential for demolition

Edward Durell Stone Buildings

12. Kirwan-Blanding Complex**

** Potential for demolition



Issues

Growth

- *Campus core infill*
- *Southern edges buffered*
- *21st Century instruction space*
- *Parking*

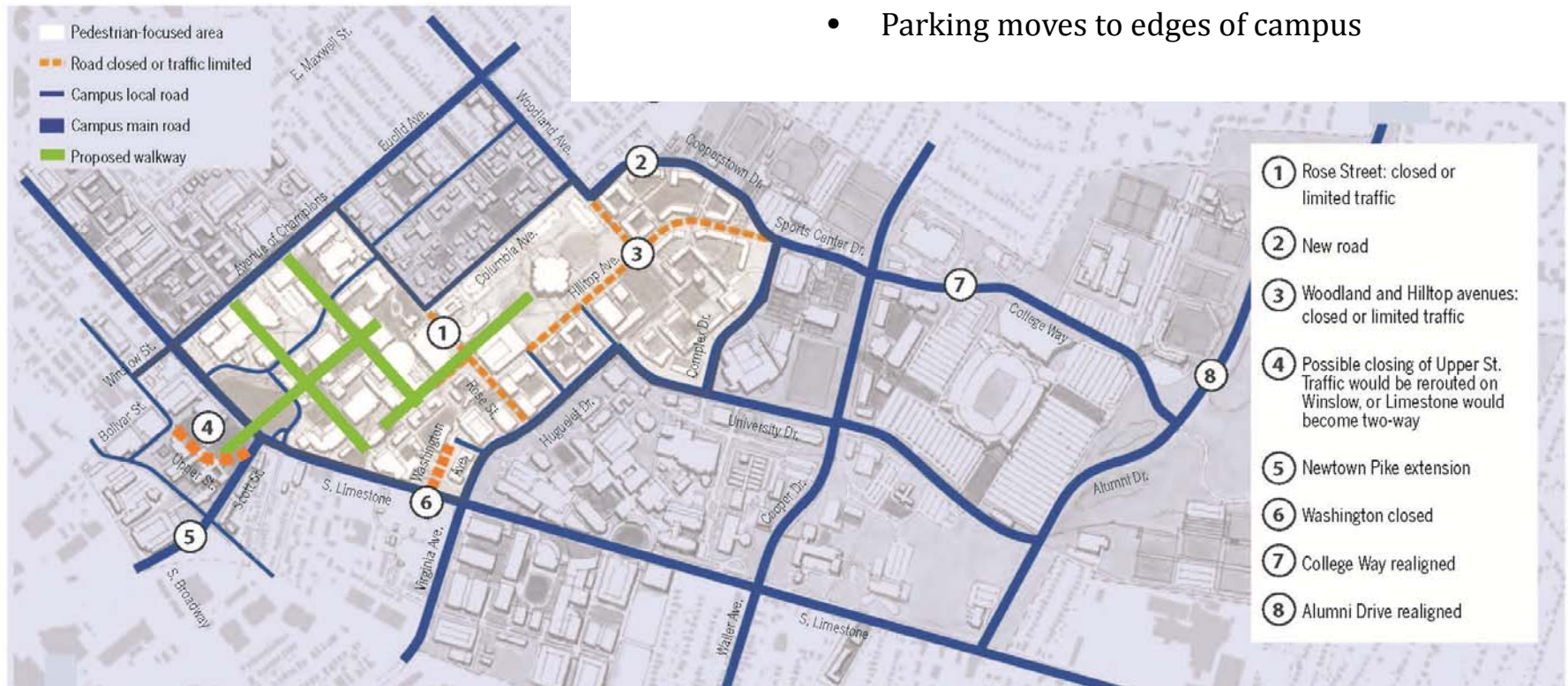


Issues

Mobility

Pedestrian vs. Vehicular Circulation

- Pedestrianize campus to the extent possible
- Point-to-Point bus system
- Transit Center at Stadium
- Parking moves to edges of campus



ROSE STREET – OPTION 1

Restricting Traffic on Rose Street



Thach St., Auburn University

ROSE STREET – OPTION 2

Calming Traffic on Rose Street

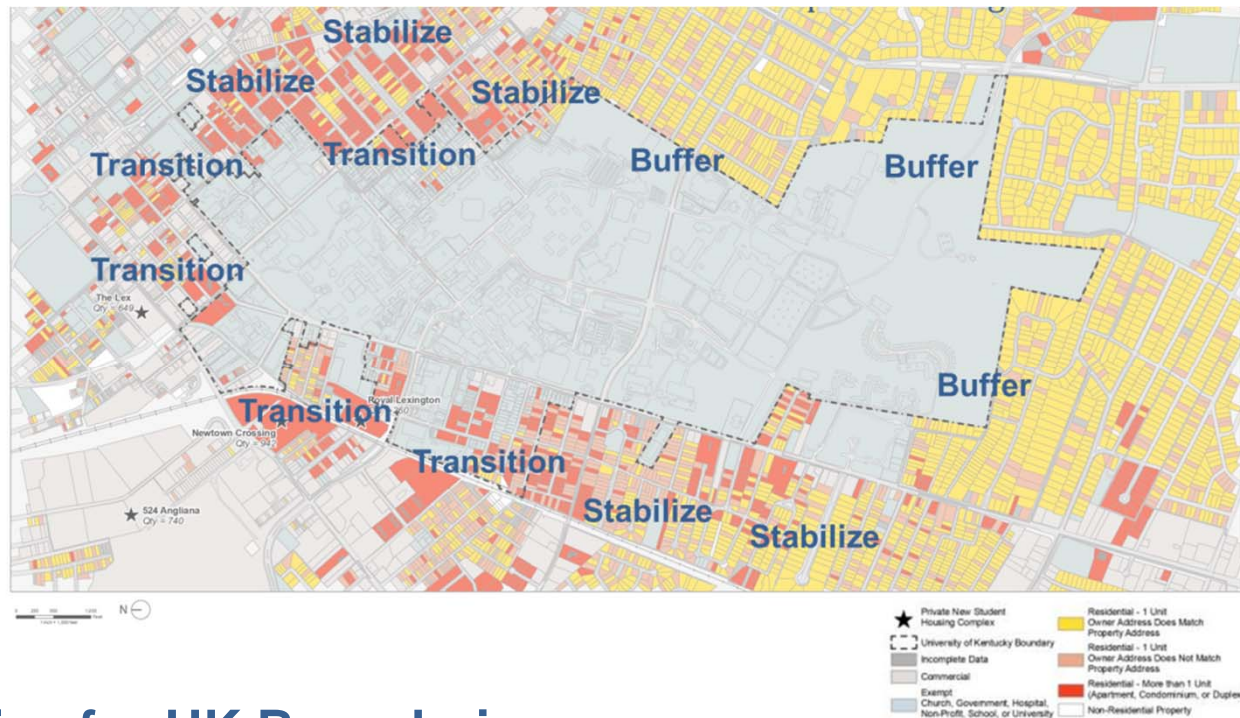


Spring Garden St. - UNC Greensboro



Initiatives

Community

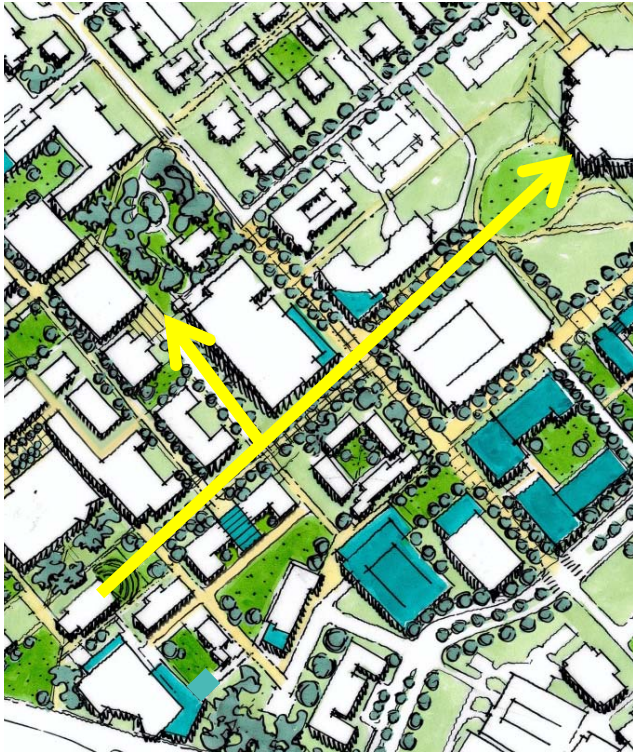


Strategies for UK Boundaries

- **Buffer** stable neighborhoods to preserve neighborhood quality and character
- **Stabilize** mixed neighborhoods to achieve a sustainable balance of student and non-student housing
- **Create transitions** between the campus and adjacent neighborhoods with compatible land uses and urban design strategies

Initiatives

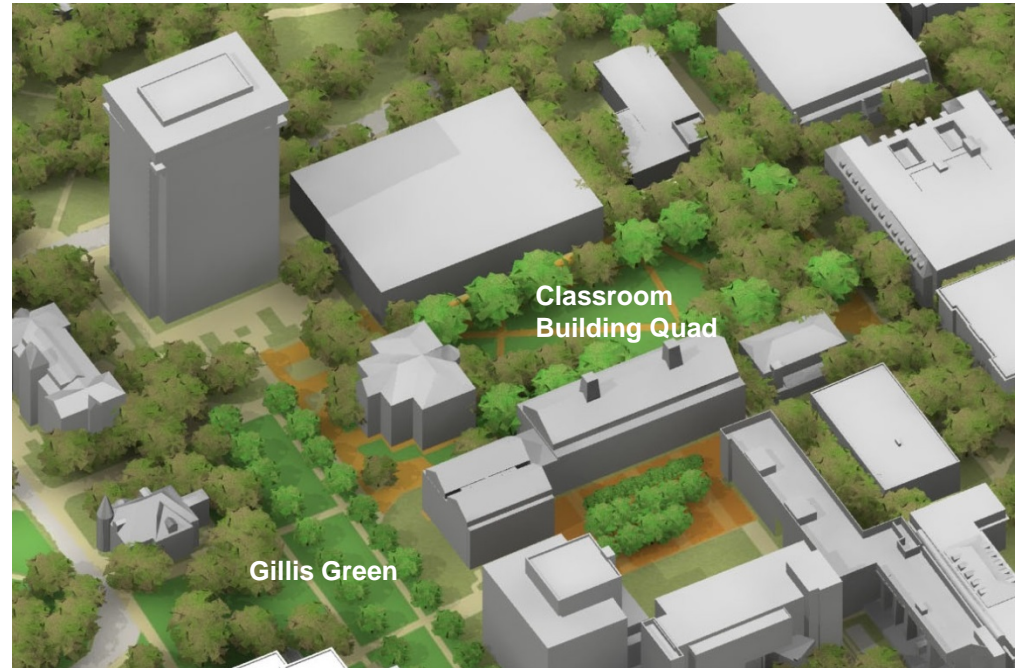
Landscape Structure



Memorial Mall & Library Dr.



University of Pennsylvania



Gillis Green

Classroom Bldg. Quad



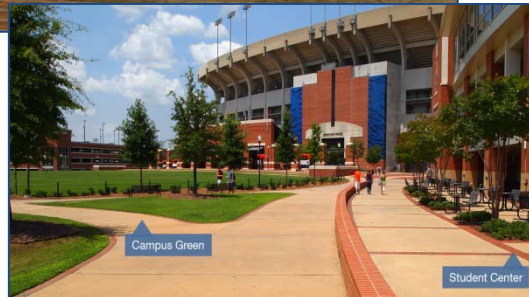
Harvard

Initiatives

Landscape Structure



Commonwealth
Stadium
Green Tailgate Area



Auburn



Greek Park Pedestrian Spine



Parking Garden

Initiatives

Housing

- Increase beds to up to 9,000 from current 5,000
- Some sites still to be chosen
- Greek Park
- Greek Commons
- Options for Kirwan/Blanding



Initiatives

Academic Environment



- State-of-the-art Classrooms
- Reuse of buildings examined
- Learning Commons at MI King Library

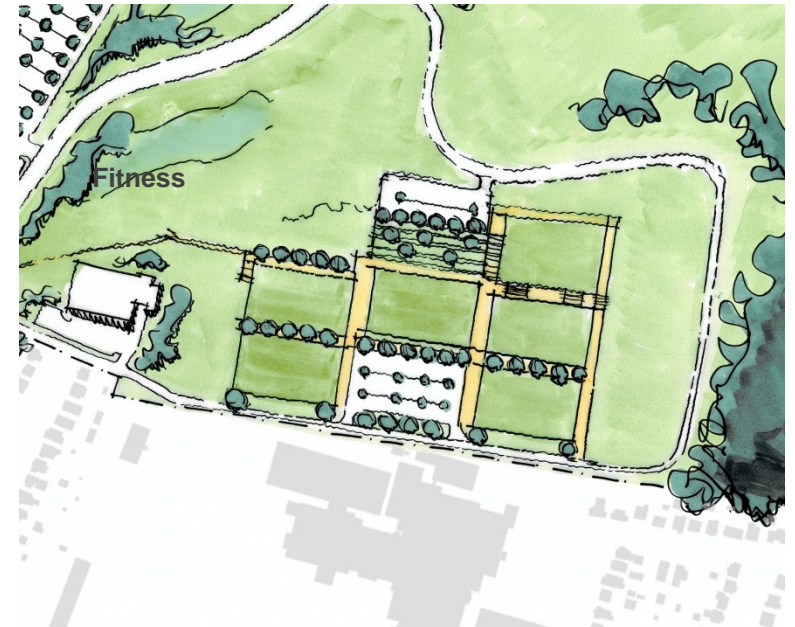


M.I. King Library

Initiatives

Student Life

- Renovate Existing Student Center
- Addition of Satellite Student Commons
- Add/ Improve Recreation Opportunities



NEXT STEPS


Current- Refine Draft Plan and Associated Maps

June - Submit Final Plan for Review

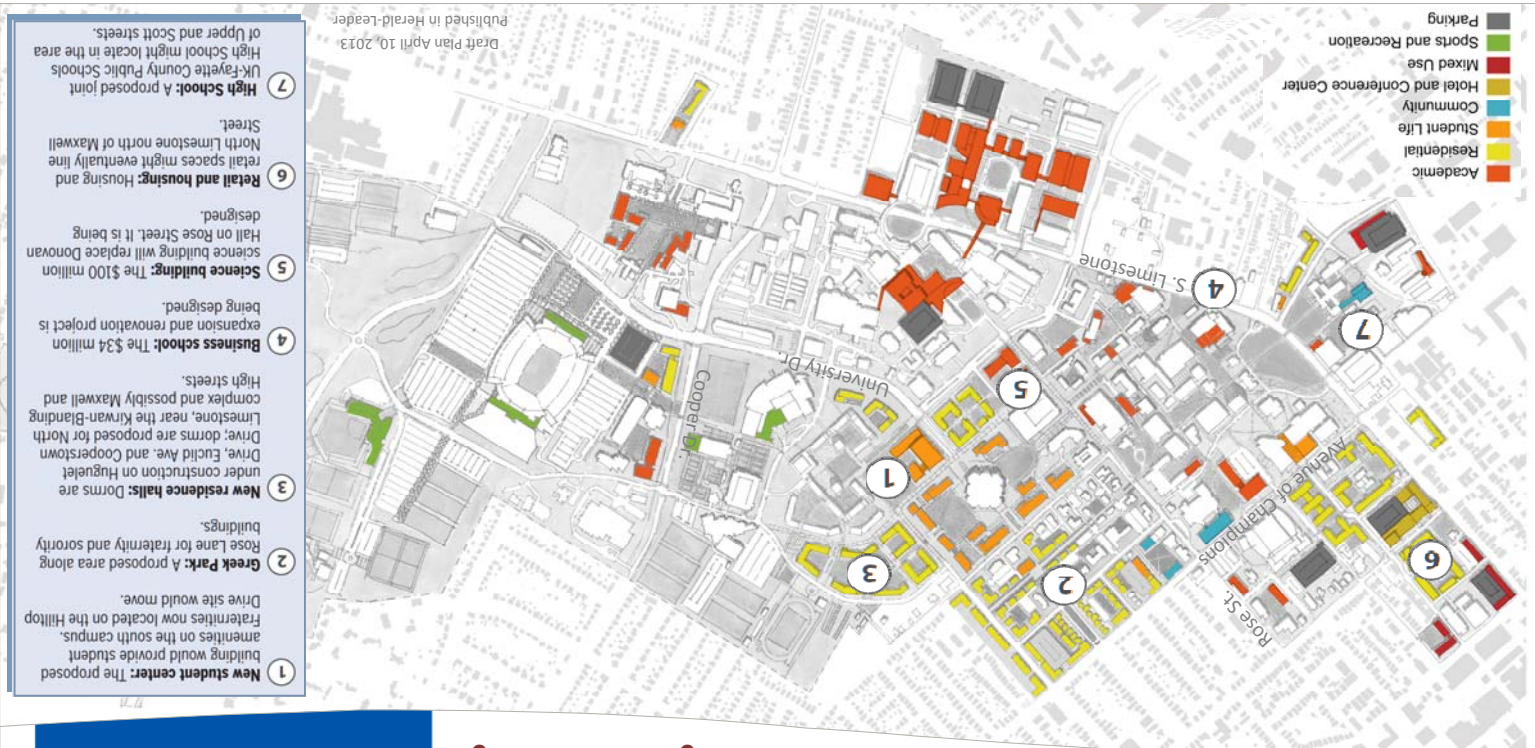
July/August - Vet Final Plan with Leadership

September 2013 - Submit Goals and Objectives to
Board of Trustees for Approval

UNIVERSITY OF
KENTUCKY®



www.uky.edu/masterplan



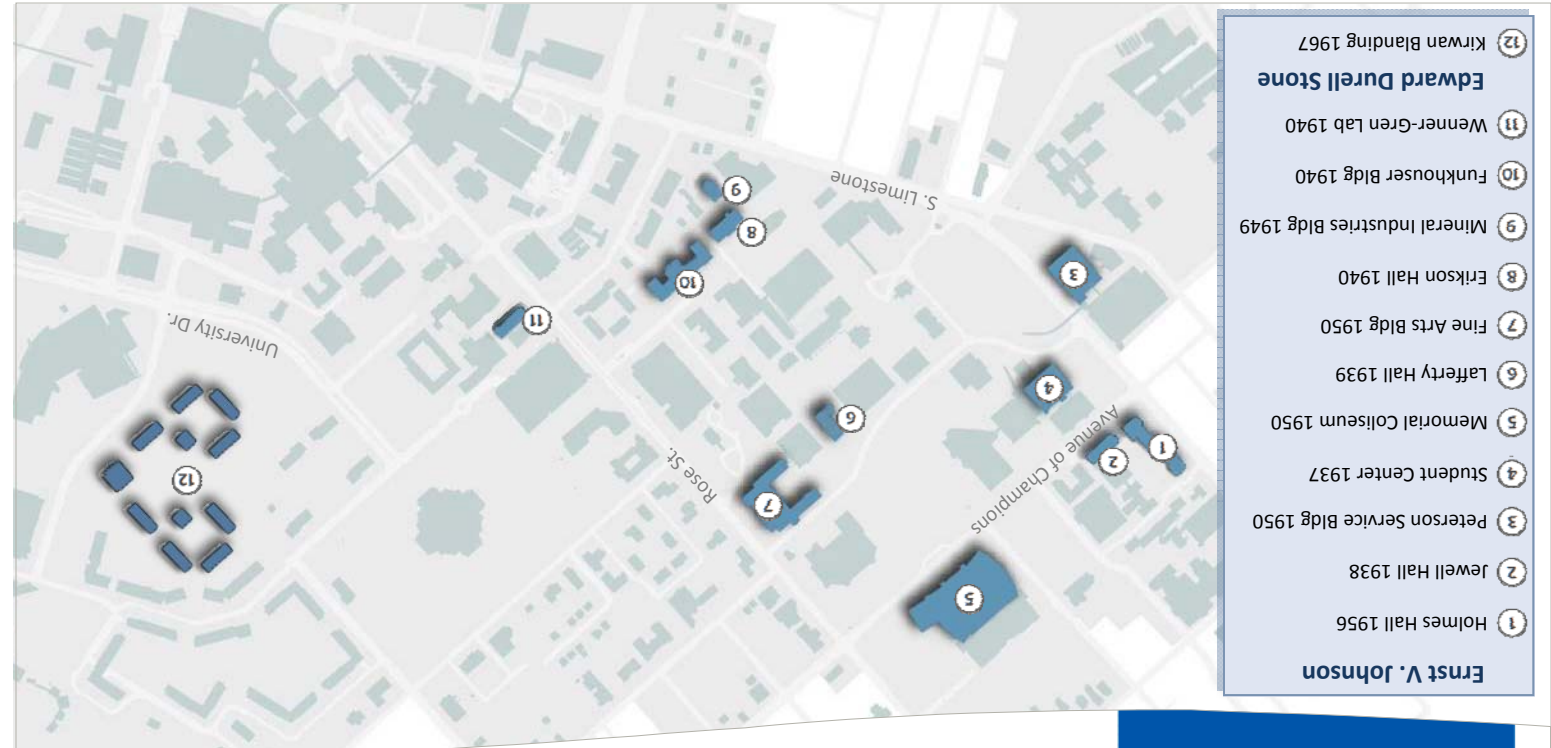
- 1 **New student center:** The proposed building would provide student amenities on the south campus. Fraternalism is now located on the Hilltop Drive site would move.
- 2 **Greek Park:** A proposed area along Rose Lane for fraternity and sorority buildings.
- 3 **New residence halls:** Dorms are under construction on Huguleit Drive, Euclid Ave. and Cooperstown Drive; dorms are proposed for North Limestone, near the Kirwan-Blanding complex and possibly Maxwell and High streets.
- 4 **Business school:** The \$34 million expansion and renovation project is being designed.
- 5 **Science building:** The \$100 million science building will replace Donovan Hall on Rose Street. It is being designed.
- 6 **Retail and housing:** Housing and retail spaces might eventually line North Limestone north of Maxwell Street.
- 7 **High School:** A proposed joint UK-Fayette County Public Schools High School might locate in the area of Upper and Scott streets.

Draft Plan April 10, 2013
Published in Herald-Leader

PUBLIC PROCESS The university has engaged the community in the master planning process. Meetings have been held with the public; UK faculty, staff & students; internal committees. We have implemented a process of continual communication with adjacent neighborhoods, LFUCG and community organizations; implemented an open door policy; held open houses and design charrettes. Future meetings are planned.

50 meetings and counting

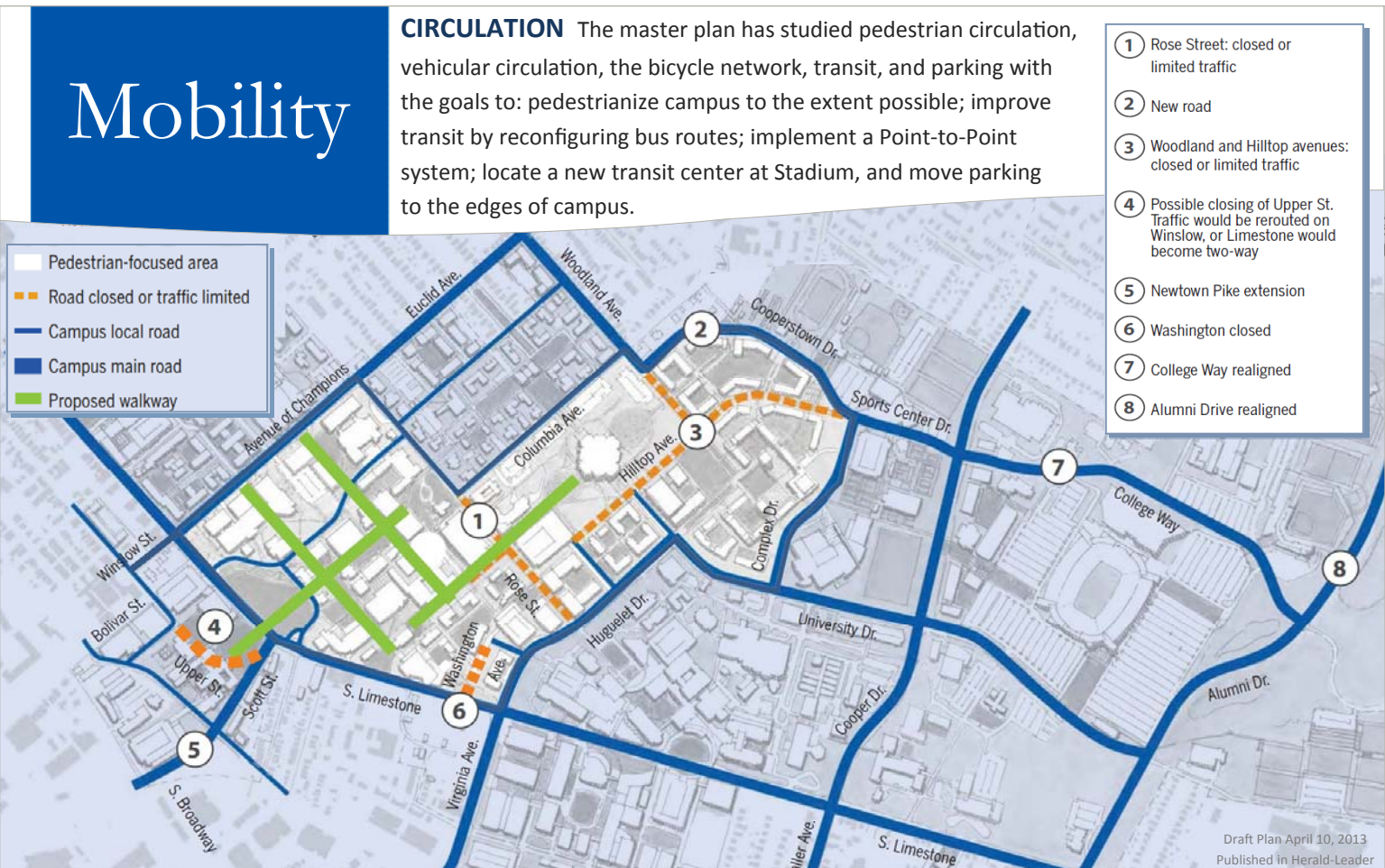
Growth



- 1 Holmes Hall 1956
- 2 Jewell Hall 1938
- 3 Peterson Service Bldg 1950
- 4 Student Center 1937
- 5 Memorial Coliseum 1950
- 6 Lafferty Hall 1939
- 7 Fine Arts Bldg 1950
- 8 Erikson Hall 1940
- 9 Mineral Industries Bldg 1949
- 10 Funkhouser Bldg 1940
- 11 Wenner-Gren Lab 1940
- 12 Kirwan Blanding 1967

CAMPUS HISTORY Since moving to the current location in 1882, the university has used multiple notable architects including Ernst V. Johnson and Edward Durrell Stone to create a contiguous campus of over 400 buildings. With a physical heritage of master planning dating back to the Olmstead Plan in 1919 the university continues to look at how best to use the land and resources available.

Physical Heritage



- 1 Rose Street: closed or limited traffic
- 2 New road
- 3 Woodland and Hilltop avenues: closed or limited traffic
- 4 Possible closing of Upper St. Traffic would be rerouted on Winslow, or Limestone would become two-way
- 5 Newtown Pike extension
- 6 Washington closed
- 7 College Way realigned
- 8 Alumni Drive realigned

Mobility

CIRCULATION The master plan has studied pedestrian circulation, vehicular circulation, the bicycle network, transit, and parking with the goals to: pedestrianize campus to the extent possible; improve transit by reconfiguring bus routes; implement a Point-to-Point system; locate a new transit center at Stadium, and move parking to the edges of campus.

Draft Plan April 10, 2013
Published in Herald-Leader



Board of Trustees

Executive Briefing

<http://www.uky.edu/masterplan>

Initiatives

COMMUNITY

- ★ Strategies for UK Boundaries
 - Buffer stable neighborhoods to preserve neighborhood quality and character
 - Stabilize mixed neighborhoods to achieve a sustainable balance of student and non-student housing
 - Create transitions between the campus and adjacent neighborhoods with compatible land uses and urban design strategies
- ★ Acquisition Boundary

LANDSCAPE STRUCTURE

- ★ Enhance green areas of campus
- ★ Current pass-through areas become hubs of student activity
 - Central Quad
 - Engineering Quad
 - Botanical Garden adjacent to Student Center
 - Memorial Mall
 - Gillis Green
- ★ Strengthen pedestrian axes through campus by means of landscaping and hardscaping
- ★ Additional recreation space

HOUSING

- ★ Increase beds to up to 9,000 from current 5,000
- ★ Some sites still to be chosen
- ★ Greek Park
- ★ Greek Commons
- ★ Options for Kirwan/Blanding

ACADEMIC ENVIRONMENT

- ★ State-of-the-art Classrooms
- ★ Reuse of buildings examined
- ★ Learning Commons at MI King Library
- ★ Current projects and future studies

STUDENT LIFE

- ★ Renovate Student Center
- ★ Satellite Student Commons
- ★ Improved recreation on North Campus

see blue.



- | | | |
|--|---|---|
| ① Admissions | ⑩ Student Center and Recreational Field | ⑳ High School |
| ② Classroom Building | ⑪ Kirwan Blanding Student Housing | ㉑ Scott Street Student Housing |
| ③ Fine Arts Addition | ⑫ Cooperstown Student Housing (Woodland Glen Halls) | ㉒ BCTC Academic Building |
| ④ Singletary Center for the Arts Renovation and Addition (Roadhouse Theater) | ⑬ Greek District | ㉓ BCTC Housing |
| ⑤ Renovated Student Center | ⑭ Mixed Use Development (Retail and Housing) | ㉔ Agriculture School Academic Expansion |
| ⑥ Renovated Gatton School of Business | ⑮ North Campus Student Housing (Champions Court I and II) | ㉕ Baseball Stadium |
| ⑦ Renovated Law School | ⑯ College Town Housing | ㉖ Recreational Fields |
| ⑧ Academic/Science Buildings | ⑰ Hotel and Conference Center | ㉗ Medical District |
| ⑨ Central and Haggin Halls | ⑱ South Hill Housing | ㉘ Housing |

LEGEND
 ● Pedestrian Circulation
 ■ Open Space
 ■ Proposed Building
 □ Existing Building

UK UNIVERSITY OF KENTUCKY
 Facilities Management

