

Summary of Domestic Well and Spring Water-Quality Data: Pre-injection Sampling



**E. Glynn Beck
Kentucky Geological Survey
October 23, 2009**

The background image shows an outdoor field sampling site. A white pickup truck is parked on the left with its bed open, containing a large spool of white tubing. A person in a blue jacket is partially visible behind the truck. In the foreground, a rectangular pit is constructed from grey concrete blocks. To the left of the pit are several red fuel containers and grey buckets. A red plastic crate sits on the edge of the concrete pit. In the bottom center, a black and white dog is looking towards the camera. The scene is set in a grassy field with a line of trees in the distance under an overcast sky.

Goal of pre-injection sampling:

Determine background water quality associated with 2 domestic wells and 2 domestic springs.

Wells and springs were sampled for:

- pH
- Turbidity (NTU)
- Alkalinity (mg/L CaCO_3), and
- Total Dissolved Solids (mg/L)



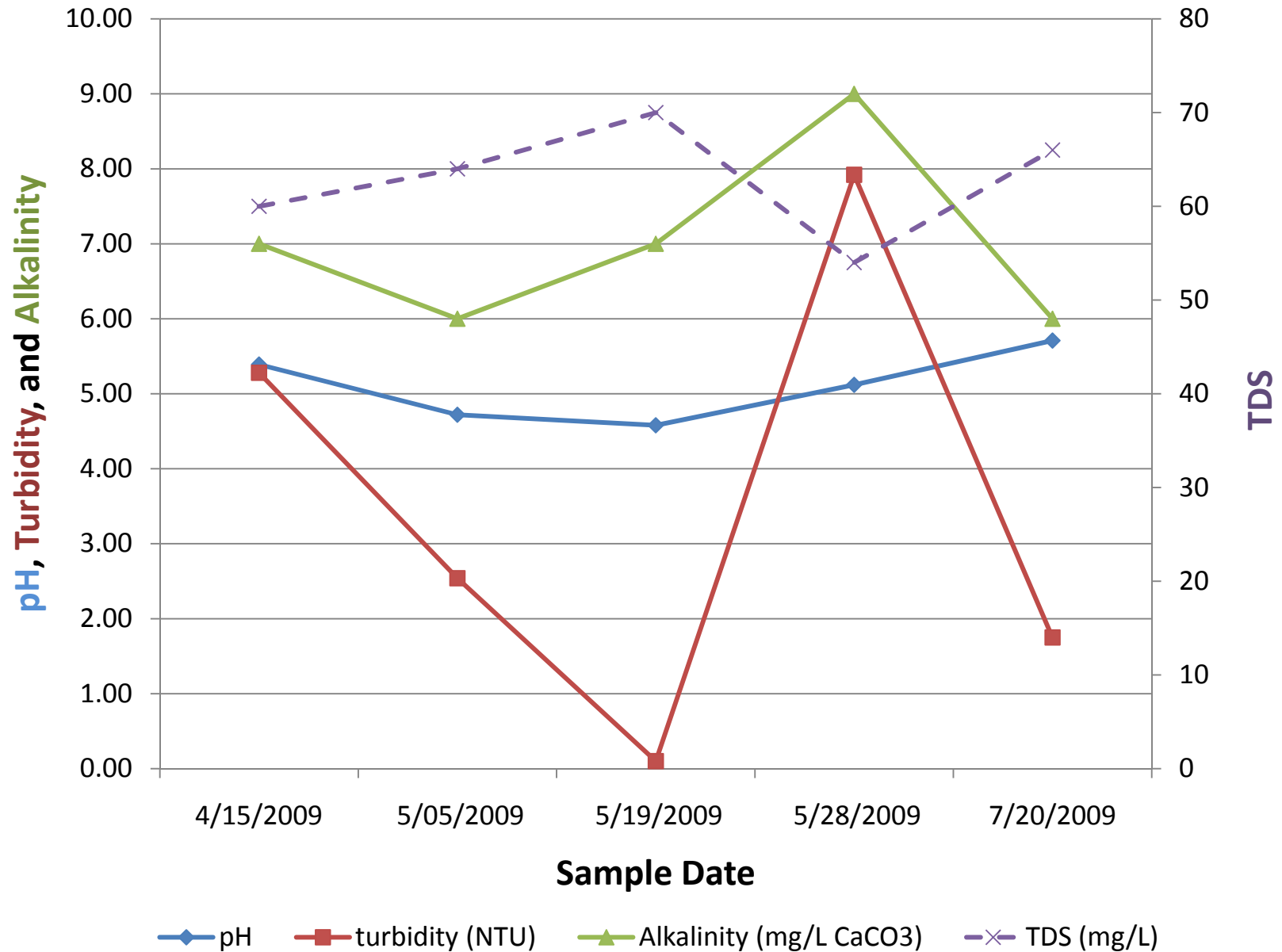
RC Spring

Discharge



Domestic drinking-water supply
Flow: 1 GPM from Caseyville Formation
Sampled 5 times between 4-15-09 and 7-20-09

RC Spring



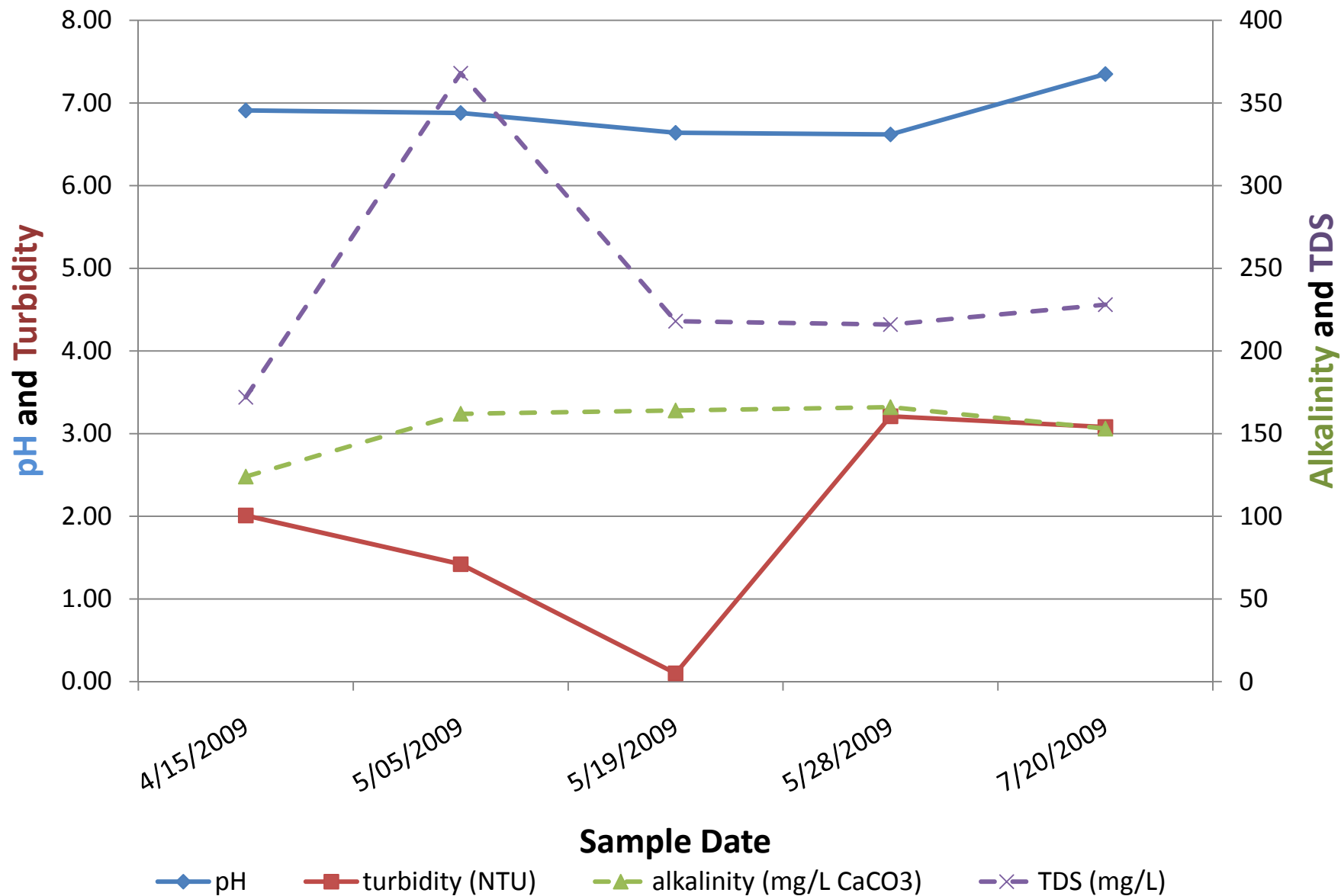
CA Spring

Discharge



Domestic drinking-water supply
Flow: 6 GPM from Tar Springs Formation
Sampled 5 times between 4-15-09 and 7-20-09

CA Spring



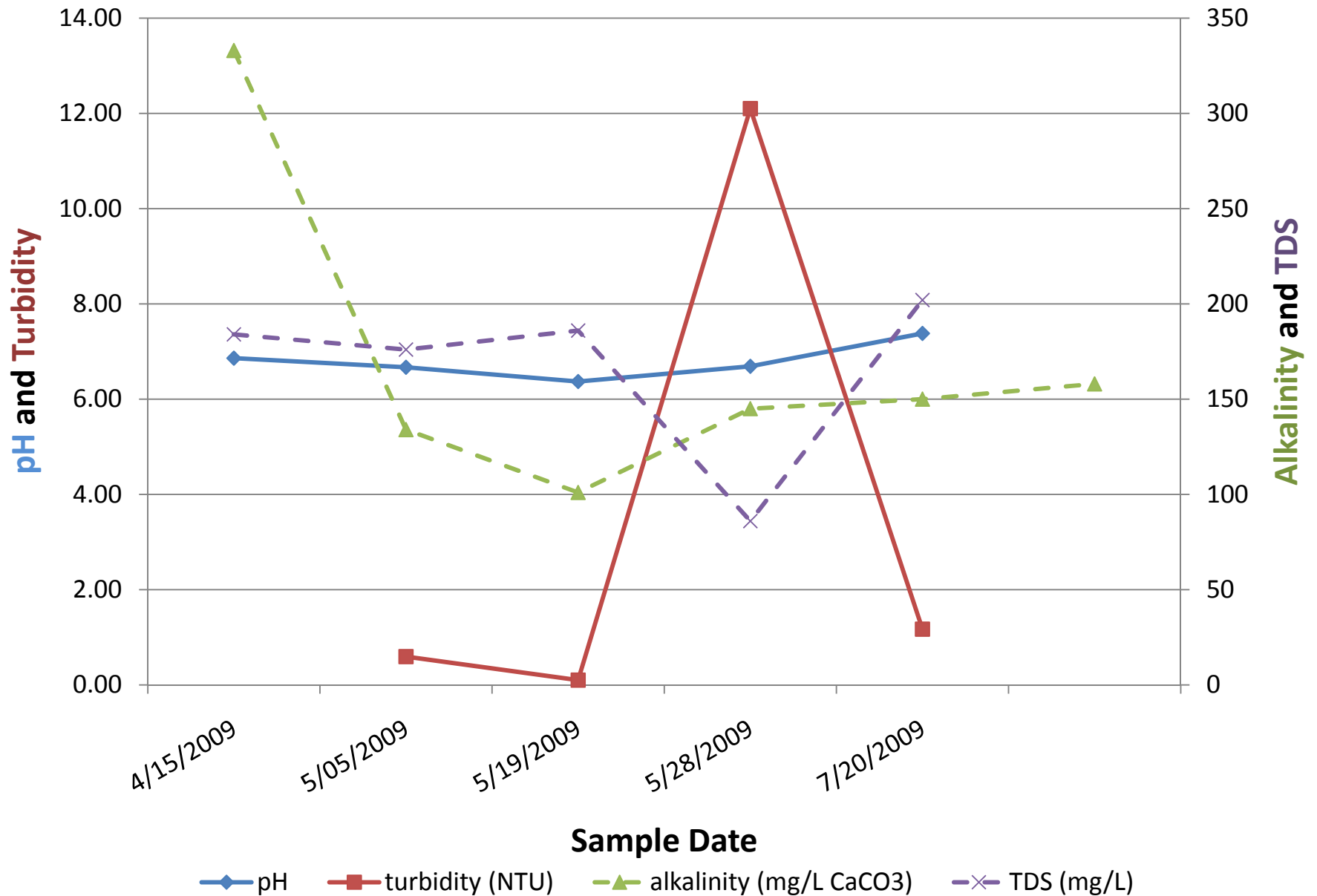
GB Well (Domestic Well)

**Well head
covered up
(access denied)**



**Total depth: 60 ft (reported)
Caseyville/Kincaid/Buffalo Wallow Formation ???
Sampled 5 times between 4-15-09 and 7-20-09**

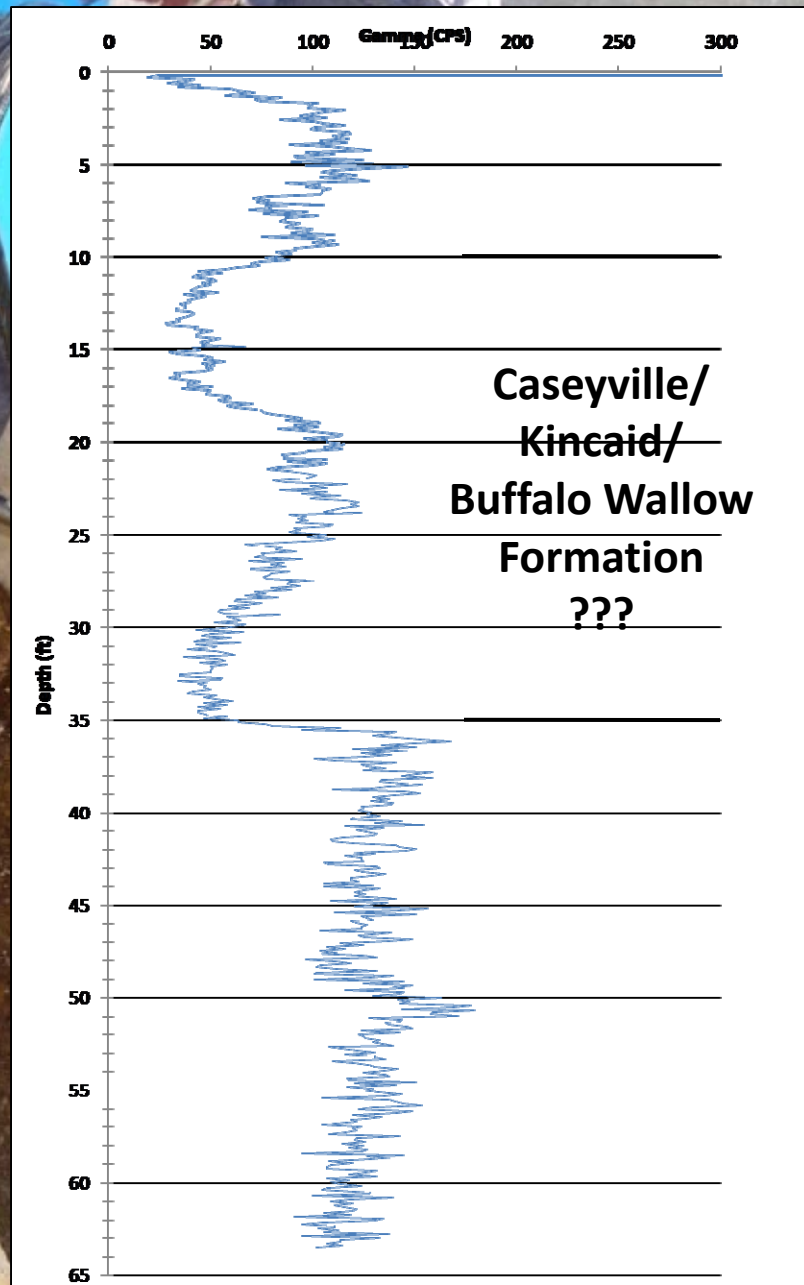
GB Well



MB Well (Abandoned Domestic Well)

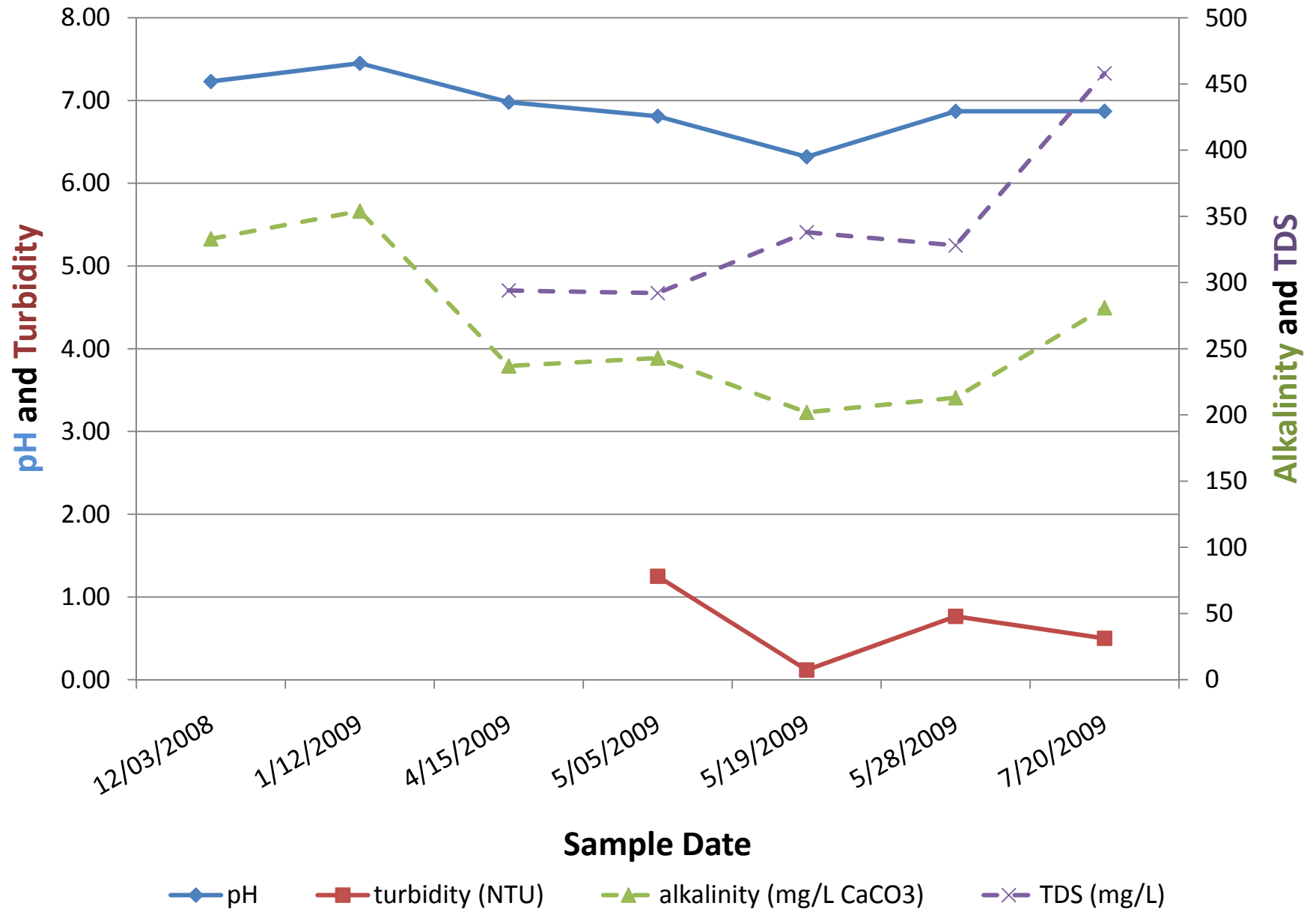
Total depth: 64 ft
Water level: 15 fbls

Well casing



Sampled 7 times between 12-3-08 and 7-20-09

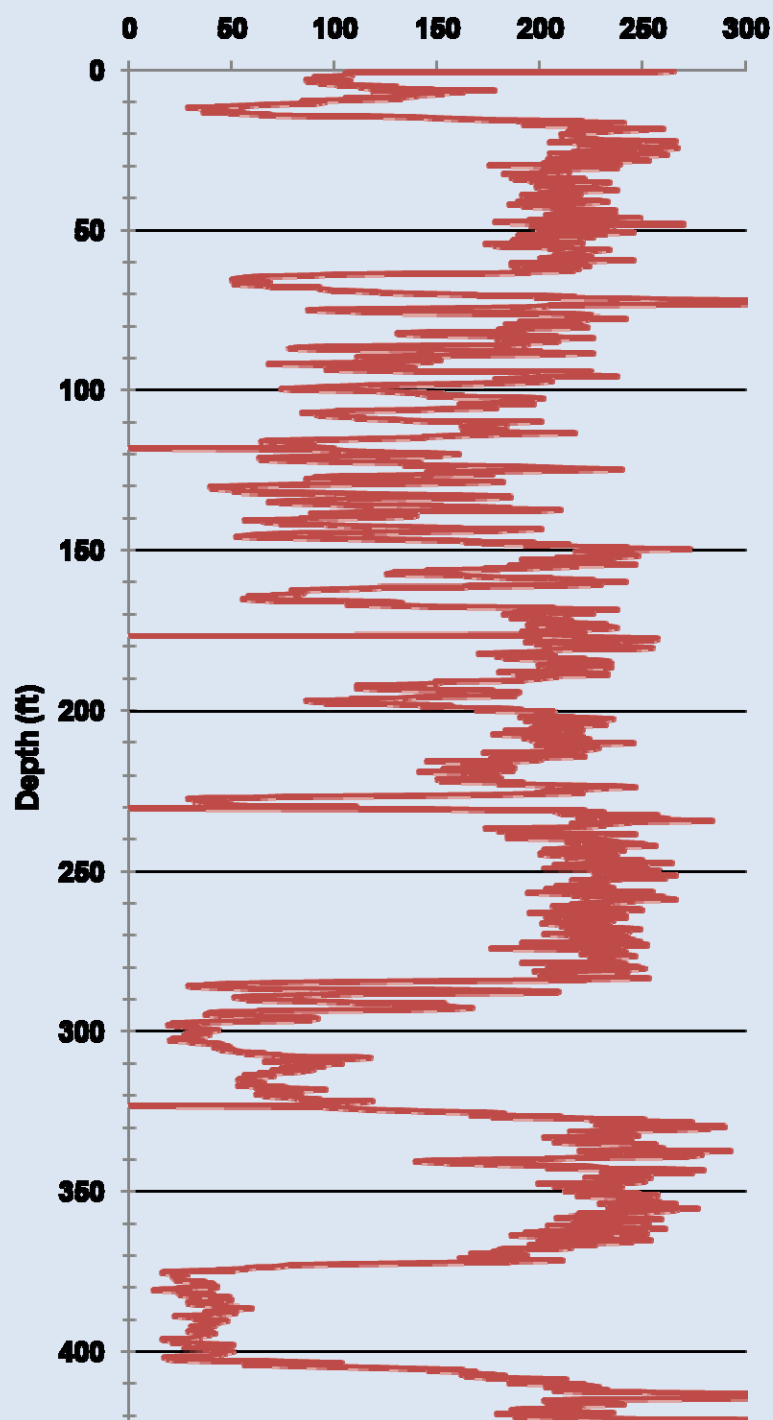
MB Well



Quarterly sampling will begin November 16th



2009 4 9



Monitoring Well

DRY

