

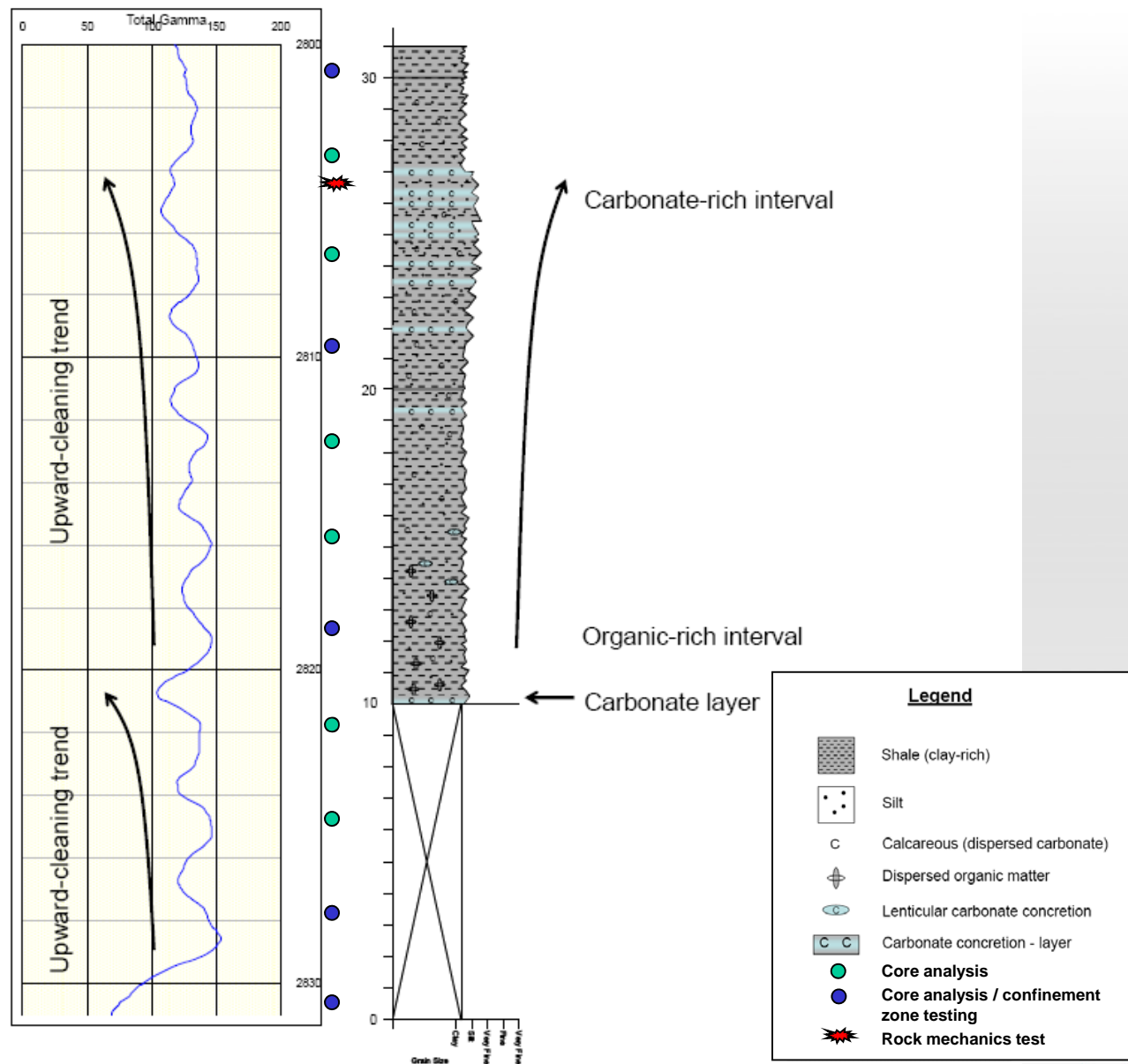


Marvin Blan #1
Maquoketa Core Report

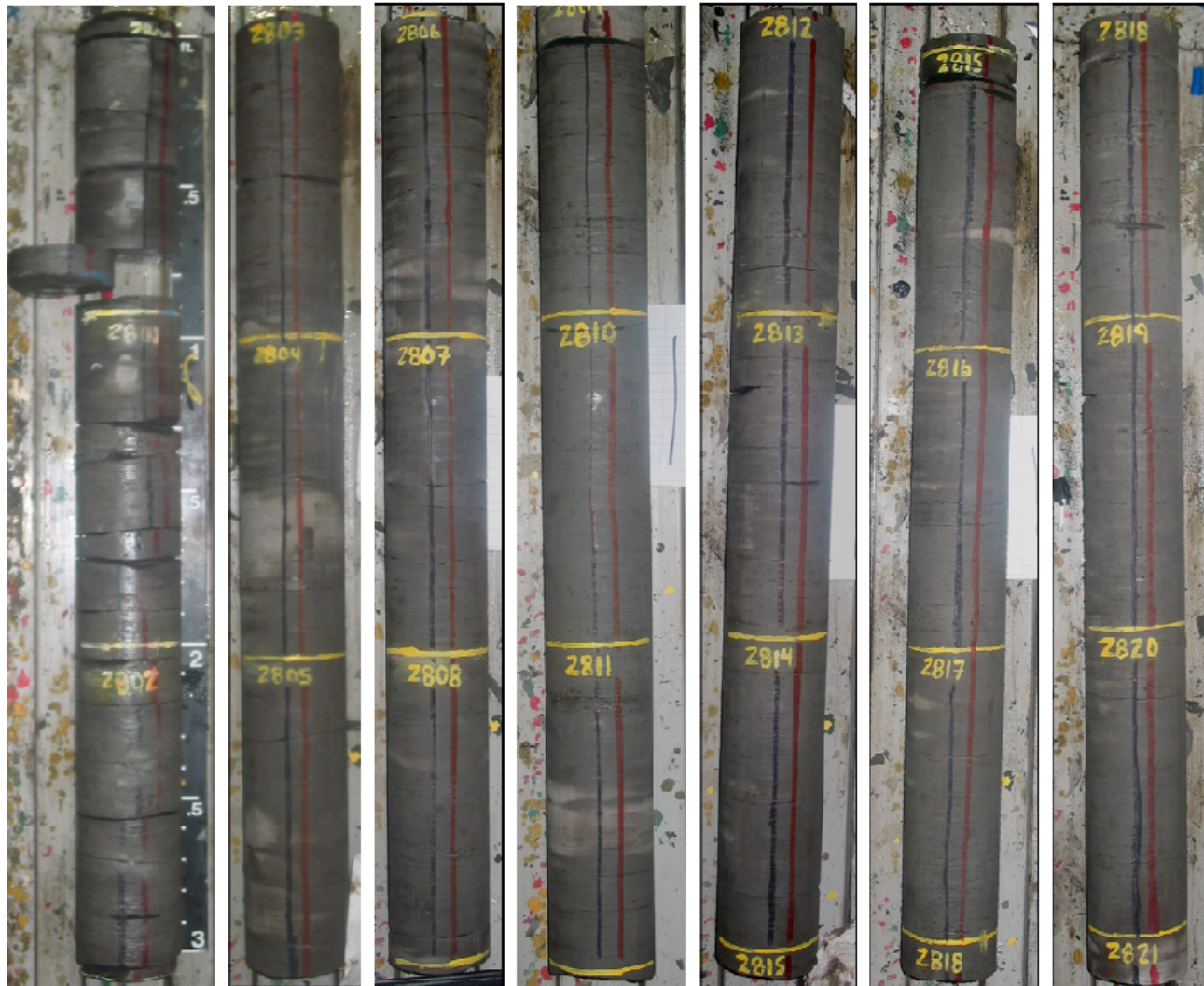
(as described by Bruce Hart)

Core Gamma

Measured Core Section



Top of core



Core:

1

2

3

4

5

6

7

Base of core

Fractured interval



Notes

- Core measured from top down as it was extruded from liners (lower 10' not described due to time constraints)
- Descriptions made on unslabbed cores
- Depositional environment interpreted as a distal, low-energy deep-water setting
- Good correlation between core and core GR log, but no clear correlation between core GR and wireline GR

Core Analysis

- All core pucks analyzed using X-ray Diffraction, Total Organic Carbon, and Thin sections
- Additional confinement zone testing on selected horizontal plugs
 - Threshold entry pressure (using CO₂)
 - Liquid perm screening
 - Mercury injection capillary pressure
 - Vapor desorption capillary pressure
- Rock mechanics tests performed on one vertical core
 - Unconfined compressive strength
 - Triaxial compressive strength
 - Acoustic velocity test