

Seismic Data Update: Hancock Co., Kentucky

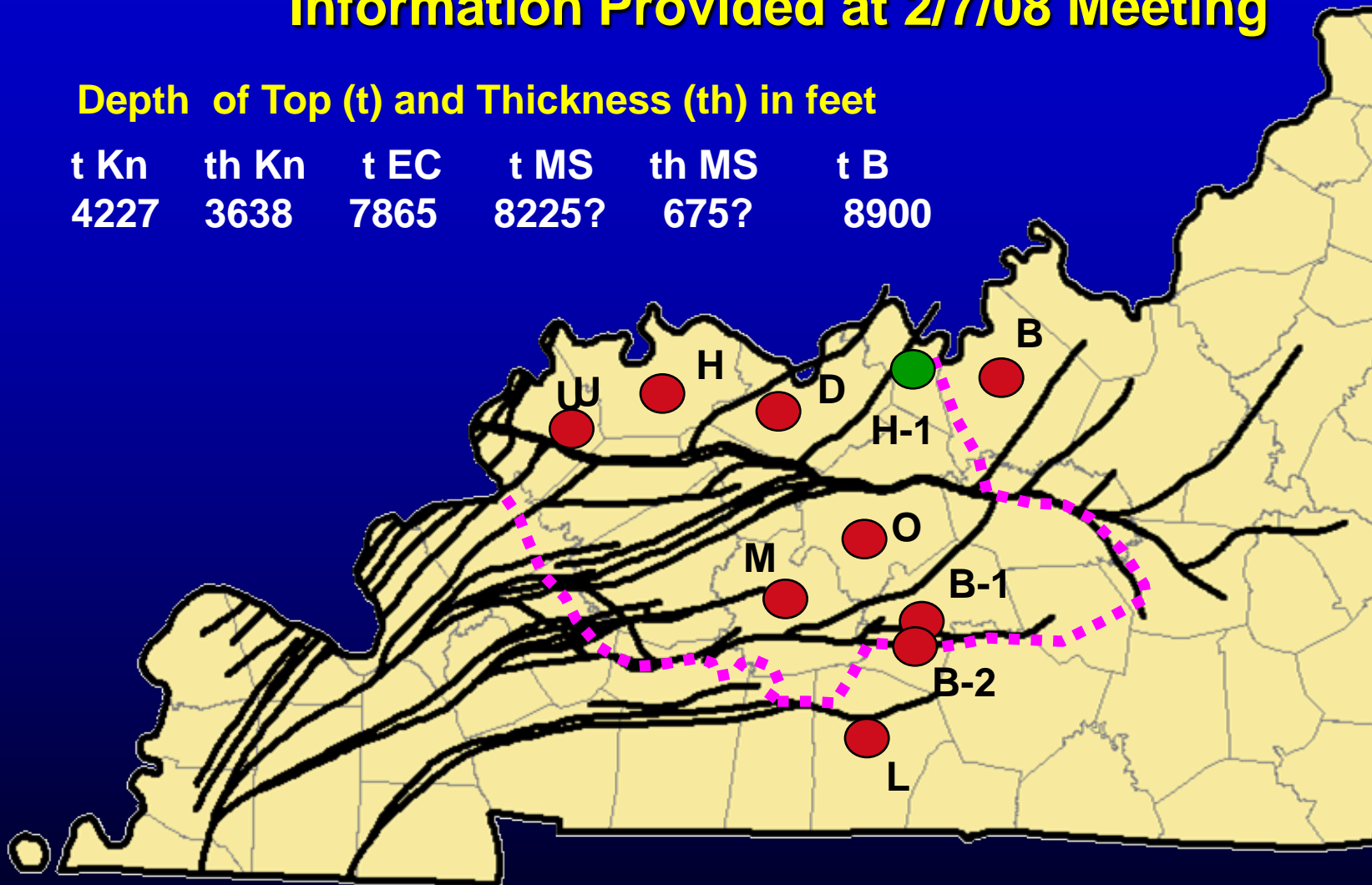
March 5, 2008

Hancock County (H1)

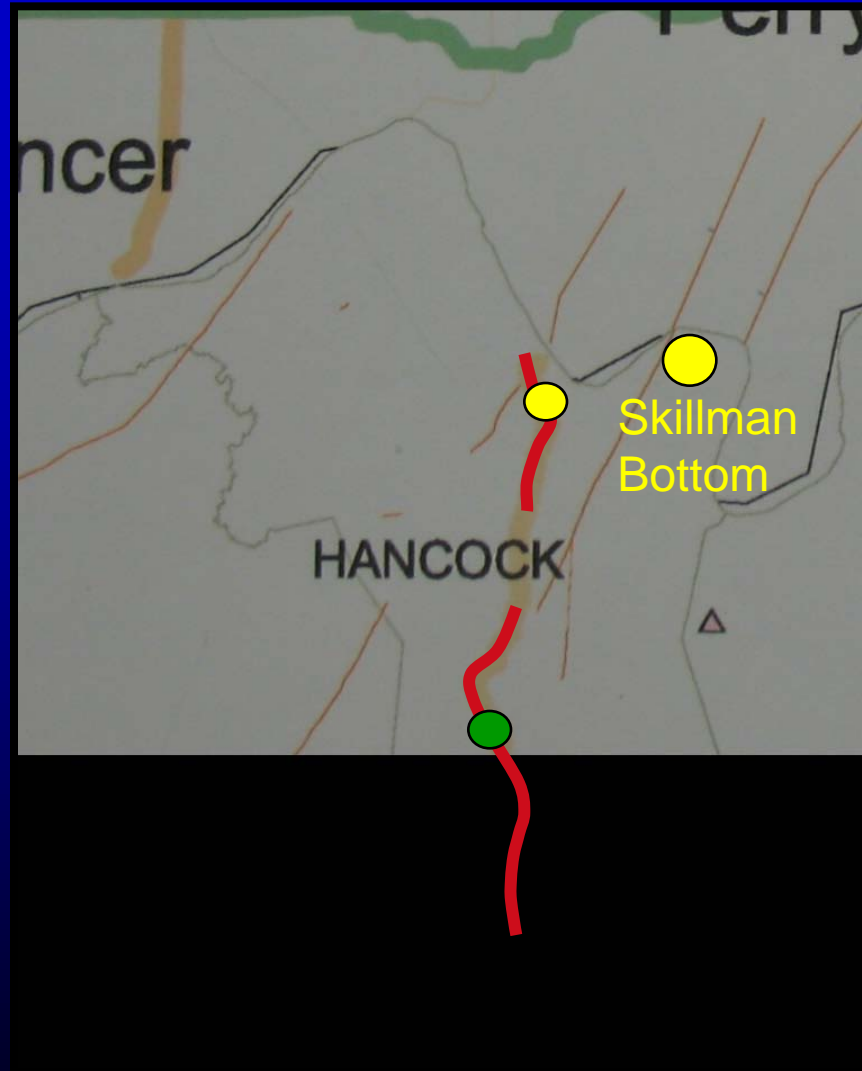
Information Provided at 2/7/08 Meeting

Depth of Top (t) and Thickness (th) in feet

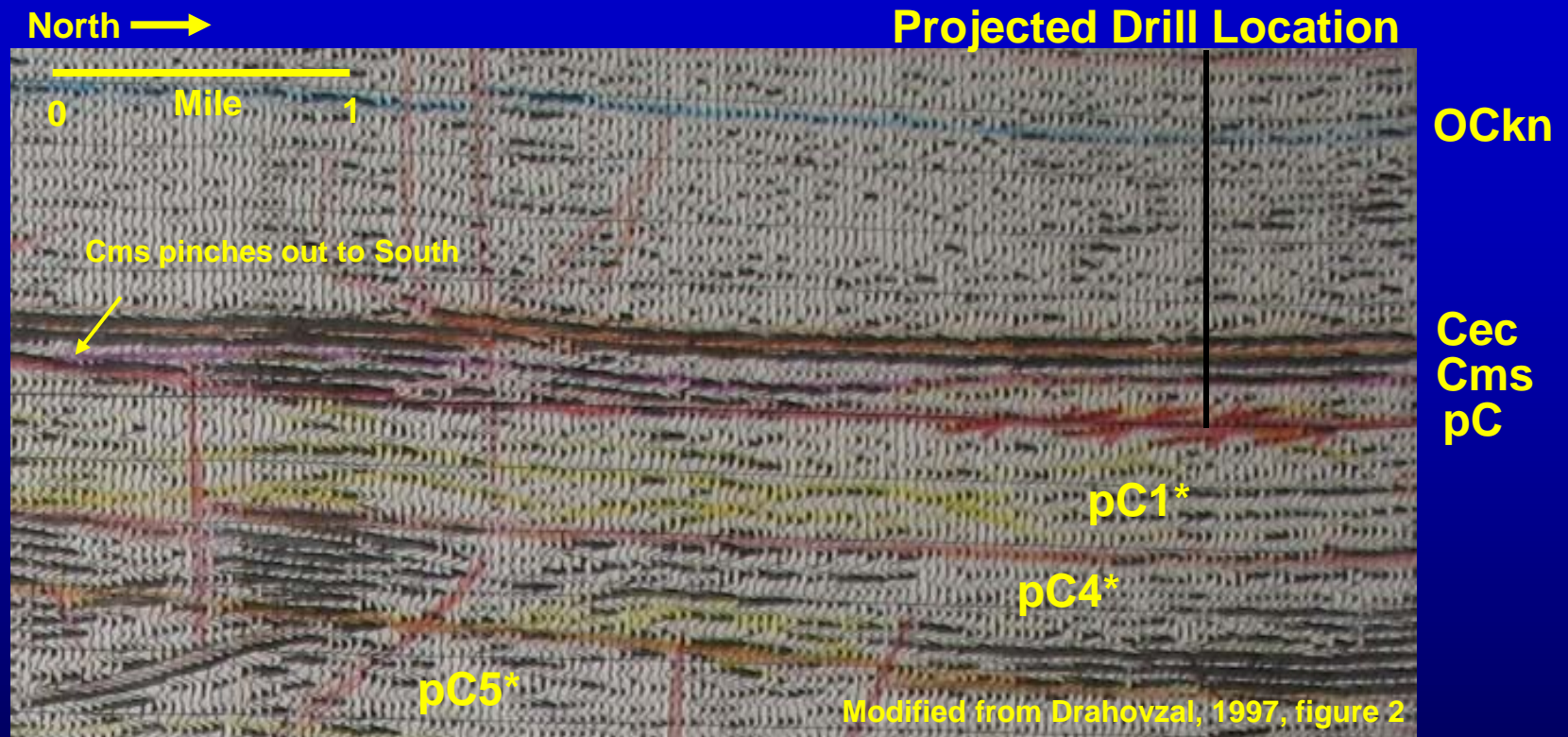
t Kn	th Kn	t EC	t MS	th MS	t B
4227	3638	7865	8225?	675?	8900



Seismic Line in Hancock Co., Kentucky



N-S Seismic Line in Hancock Co.



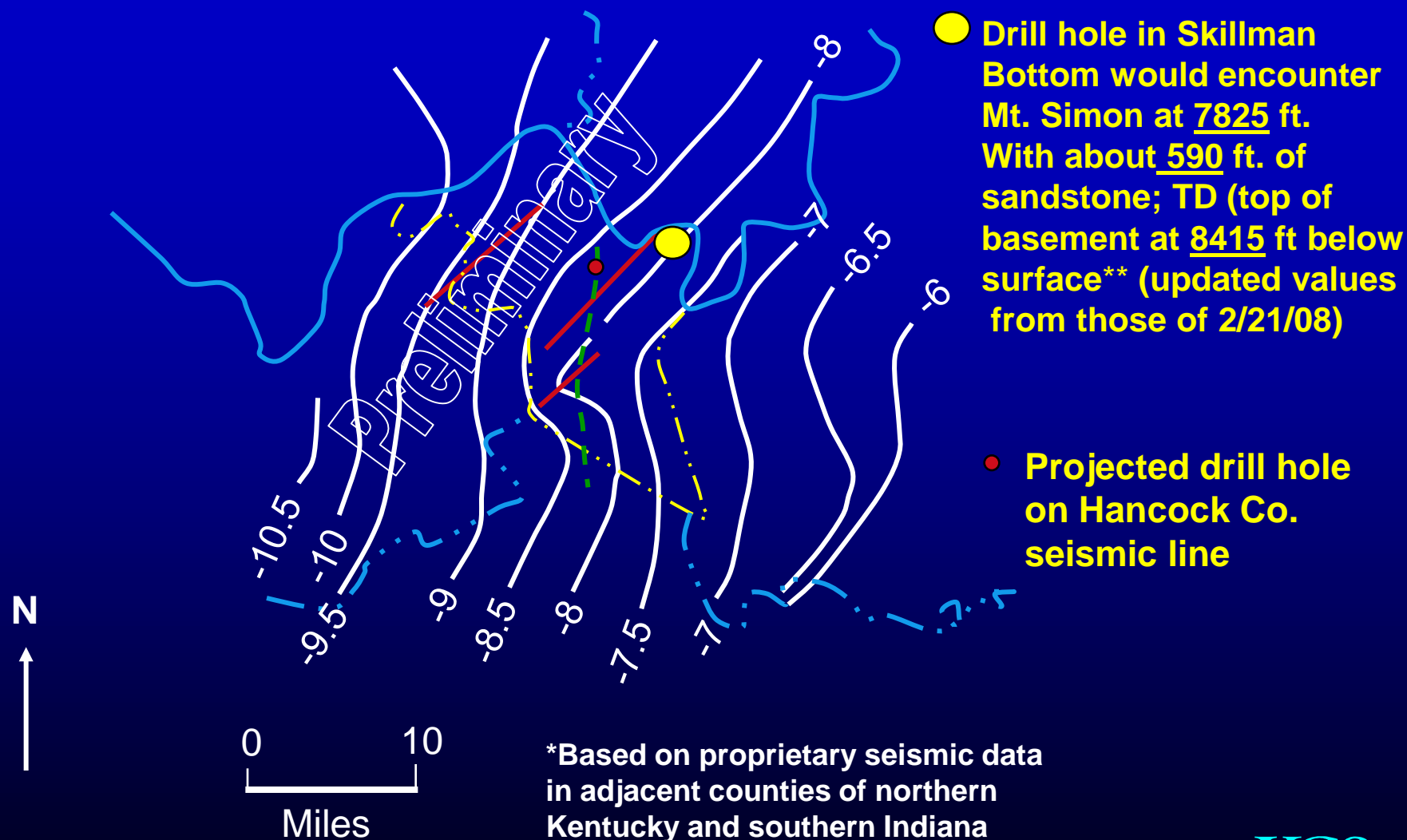
- Thickest development of sandstone (estimated 589 feet) is likely below the proposed drill location (updated from values provided 2/7/08)
- Possible sand-rich facies below in pC1*--could represent reservoir rock (likely sedimentary, but not previously drilled)
- Mt Simon downlaps and changes facies to south—from sandstone to interbedded rocks (shales and sandstones ?)—formation pinches out to south

OCkn Knox Group; Cec Eau Claire Formation; Cms Mt. Simon Sandstone; pC Precambrian; pC1* Precambrian Unit 1*; pC4* Precambrian Unit 4*; pC5* Precambrian Unit 5*



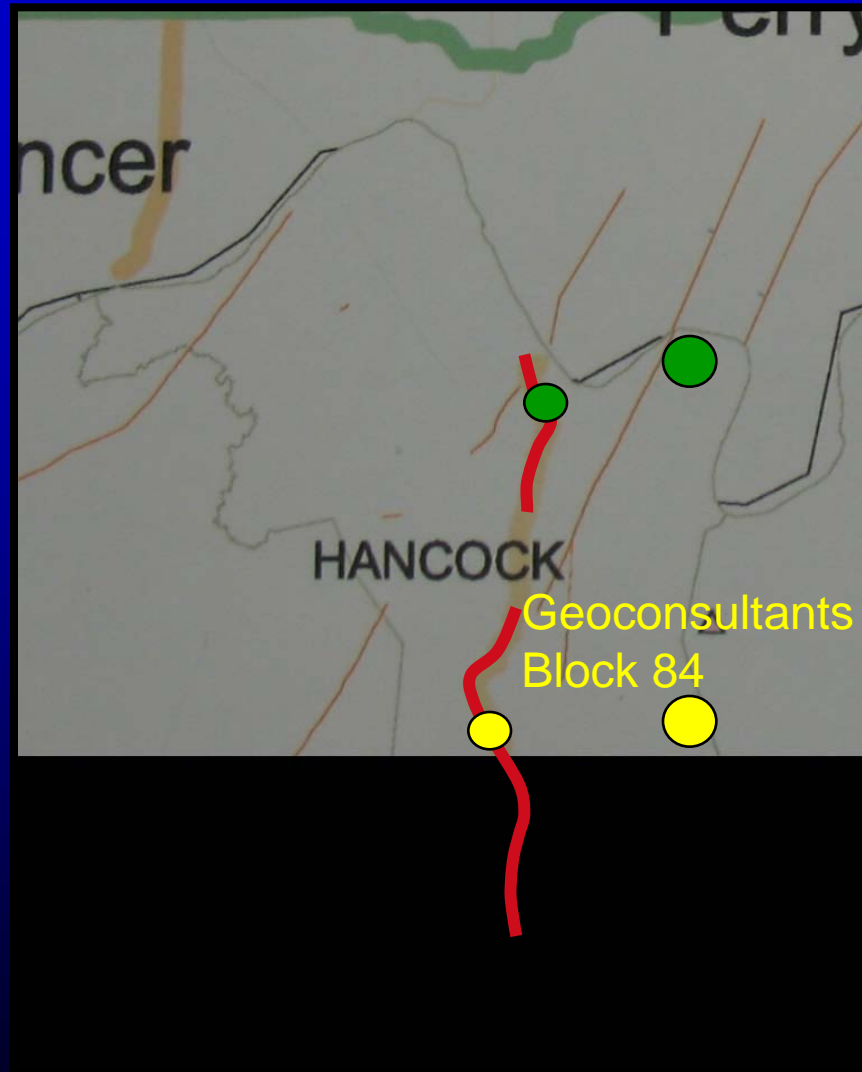
Elevation Top Basement, Hancock Co., Kentucky*

(in thousands of feet sub sea)



**Assuming ground elevation of 415 ft.

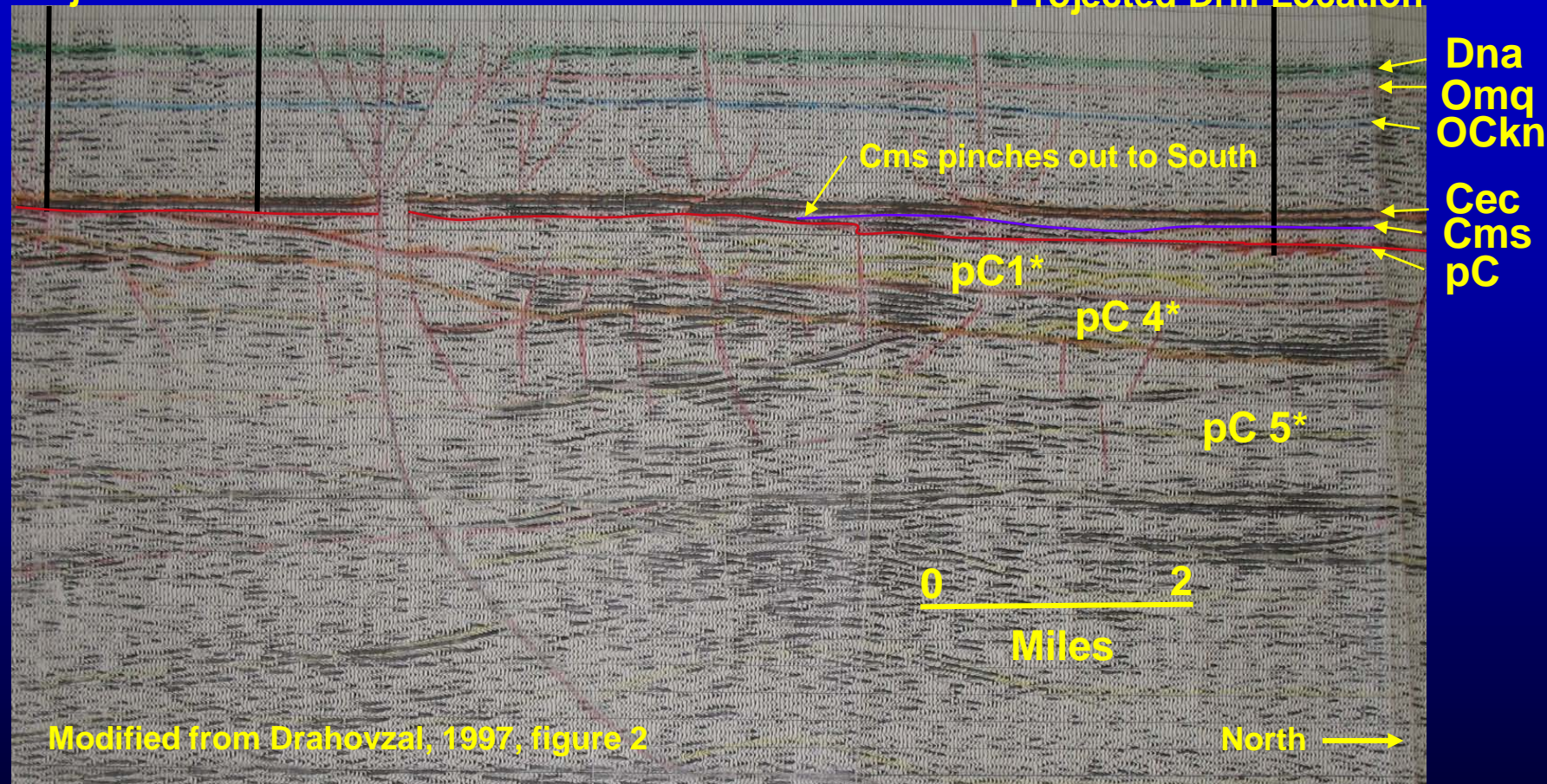
Seismic Line in Hancock Co., Kentucky



N-S Seismic Line in Hancock Co.

Geoconsultants
Projected Drill Locations

Skillman Bottom
Projected Drill Location

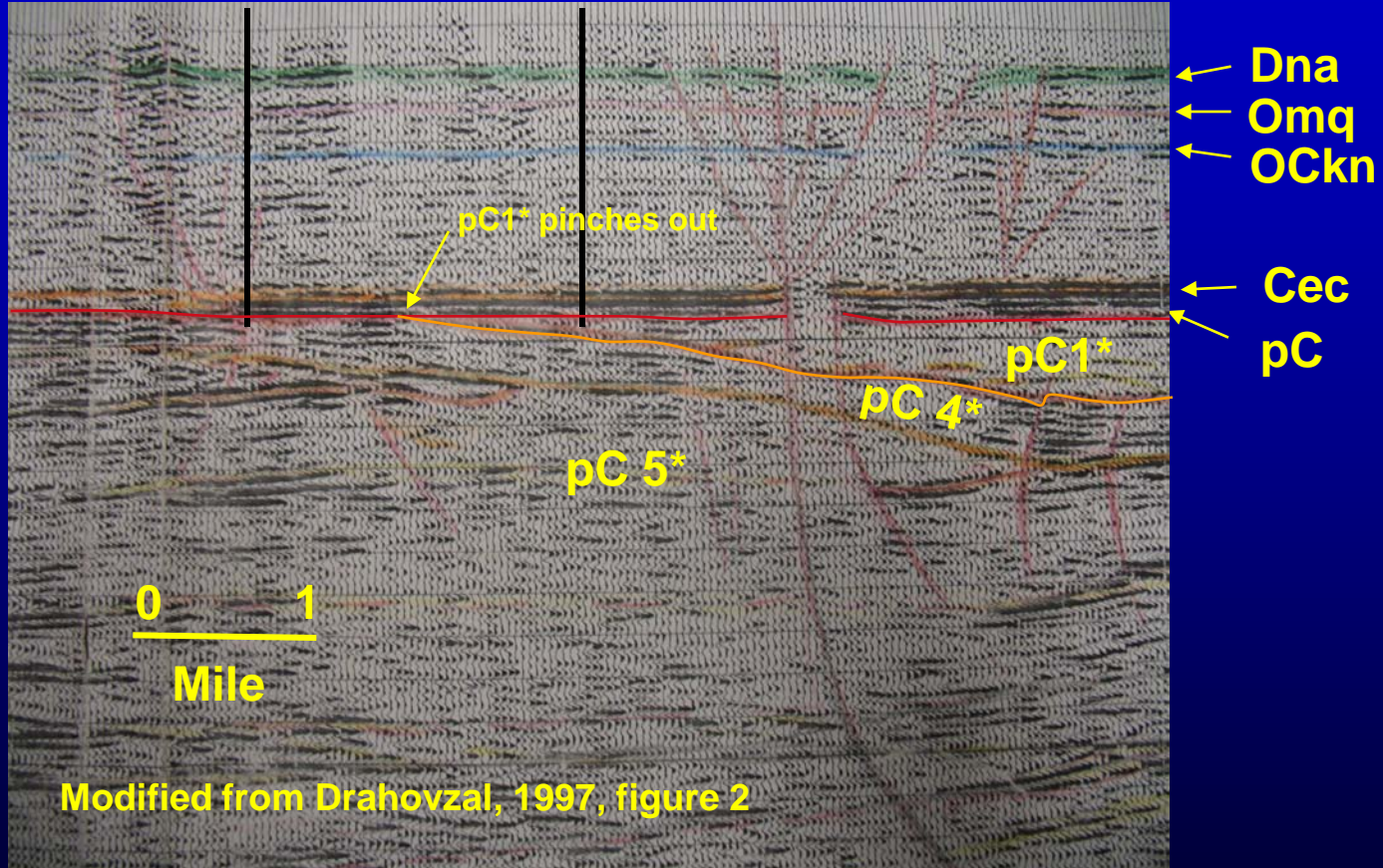


Dna New Albany Shale; Omq Maquoketa Shale; OCkn Knox Group; Cec Eau Claire Formation; Cms Mt. Simon Sandstone; pC Precambrian;
pC1* Precambrian Unit 1*; pC4* Precambrian Unit 4*; pC5* Precambrian Unit 5*

N-S Seismic Line in Hancock Co.

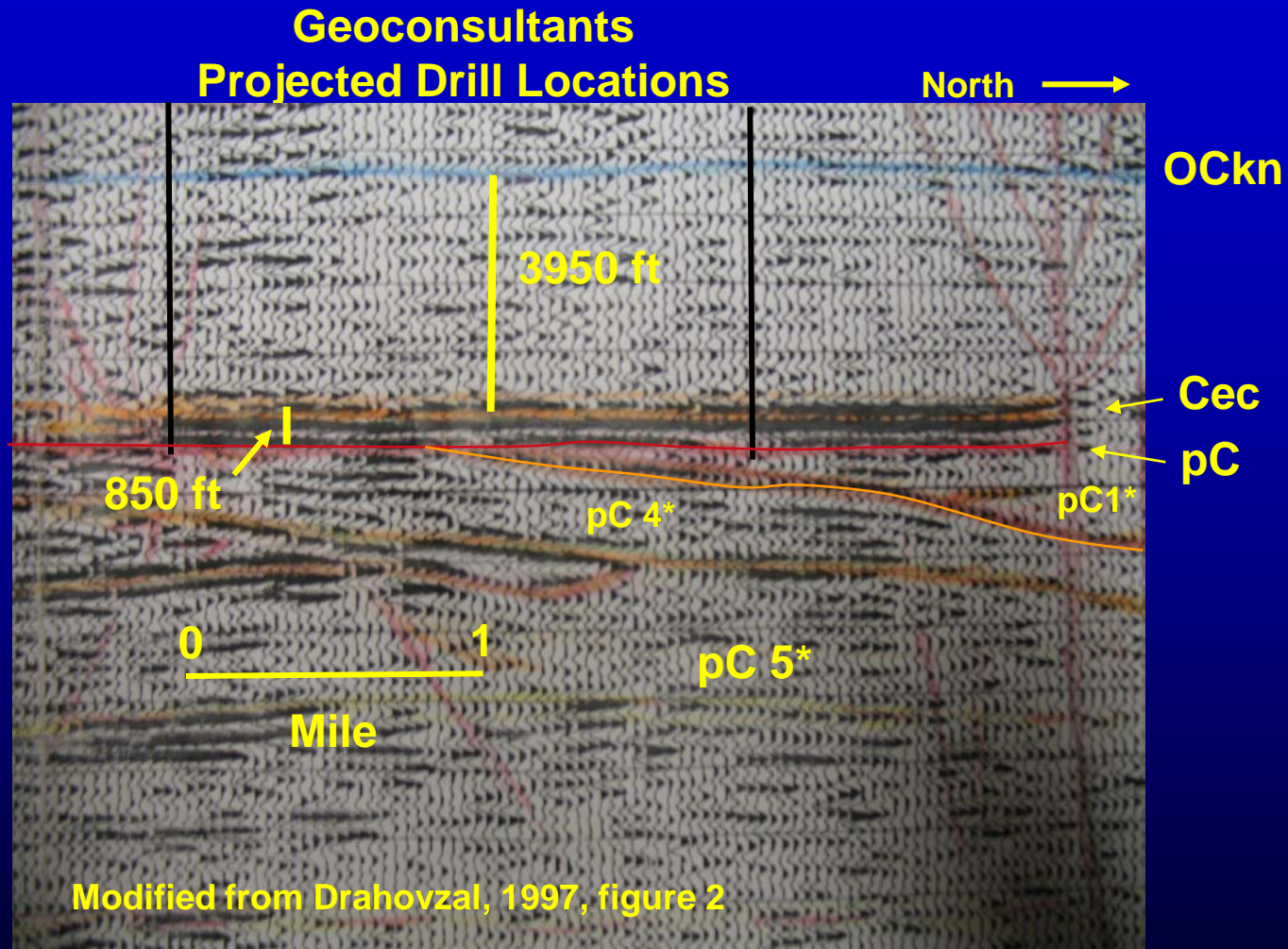
Geo Consultants
Projected Drill Locations

North →



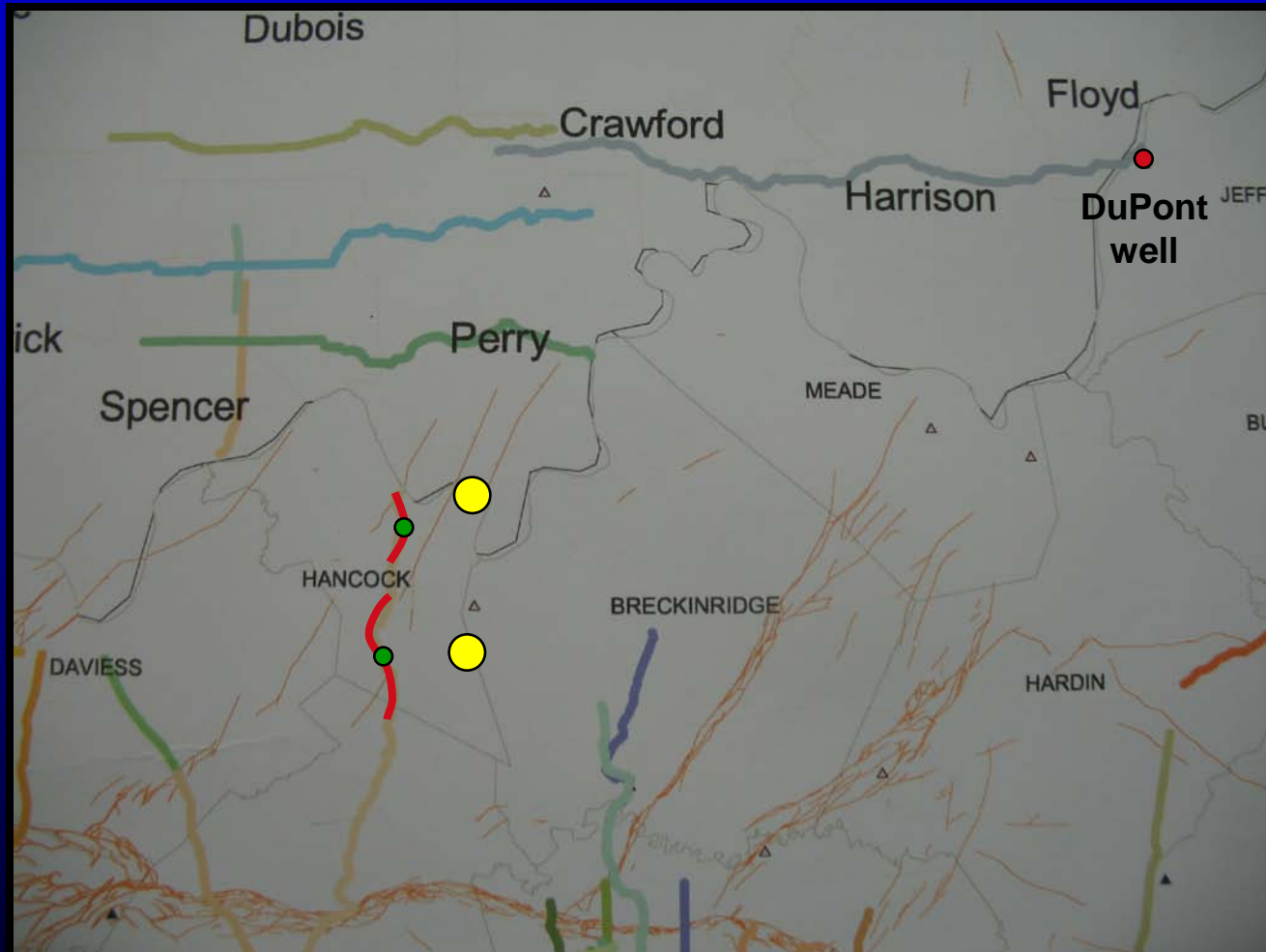
Dna New Albany Shale; Omq Maquoketa Shale; OCKn Knox Group; Cec Eau Claire Formation;; pC Precambrian; pC1* Precambrian Unit 1*;
pC4* Precambrian Unit 4*; pC5* Precambrian Unit 5*

N-S Seismic Line in Hancock Co.



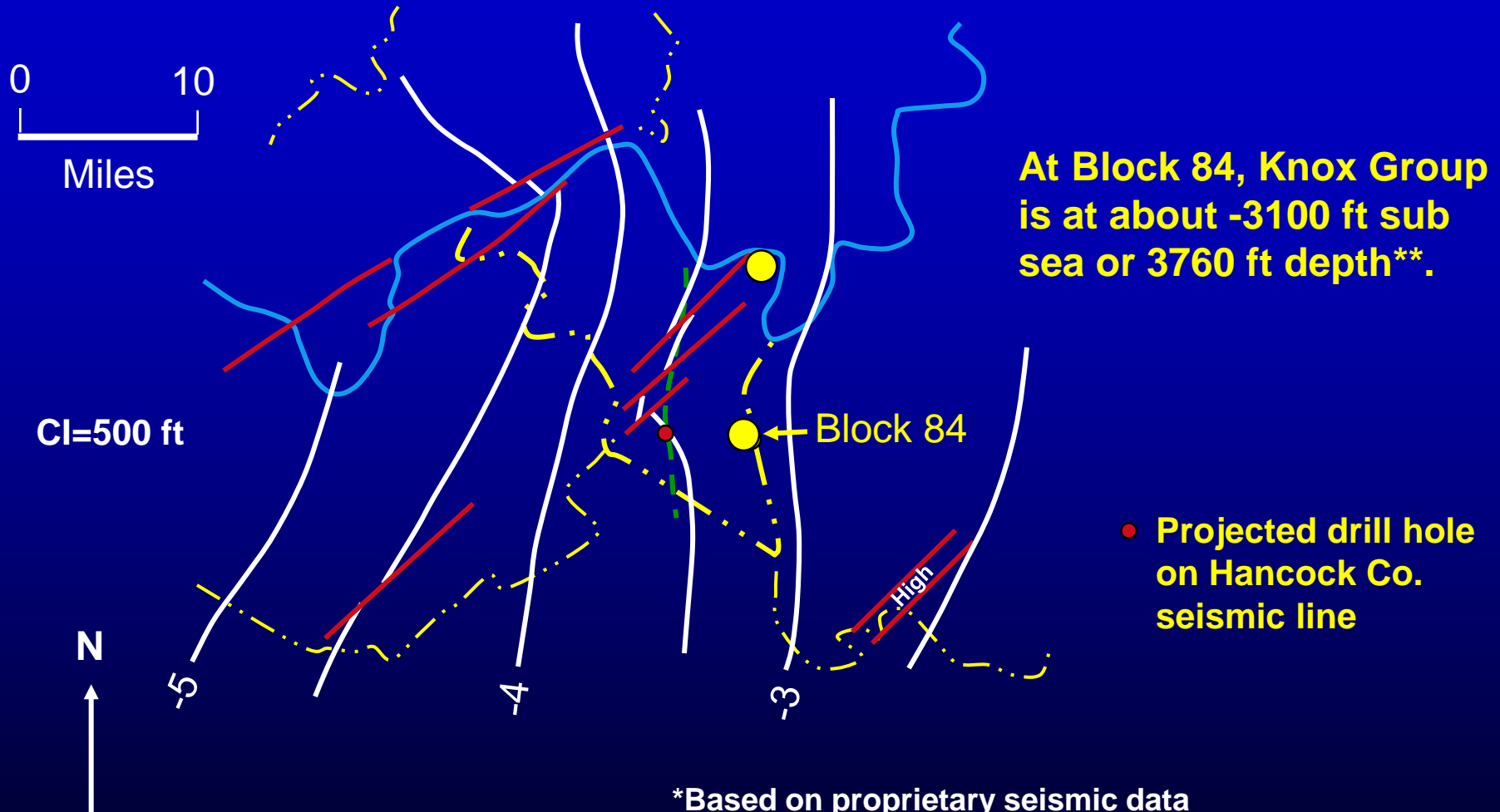
OCkn Knox Group; Cec Eau Claire Formation; pC Precambrian;
pC1* Precambrian Unit 1*; pC4* Precambrian Unit 4*; pC5*;
Precambrian Unit 5*

Proprietary Seismic Lines Used in Constructing Contour Map of Precambrian Surface in the vicinity of Hancock Co., Kentucky



Top of Knox Group in Hancock Co., Kentucky*

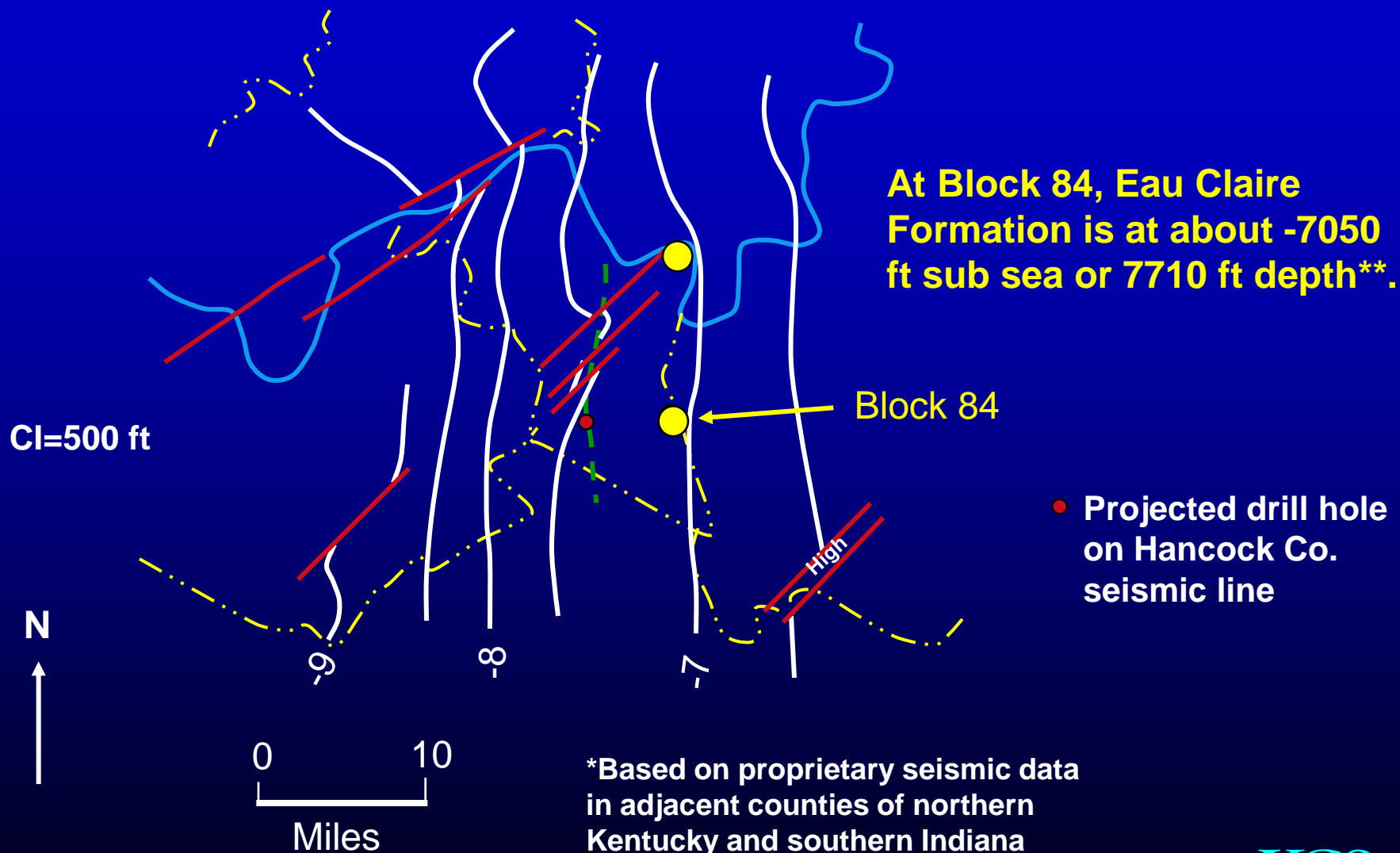
(in thousands of feet sub sea)



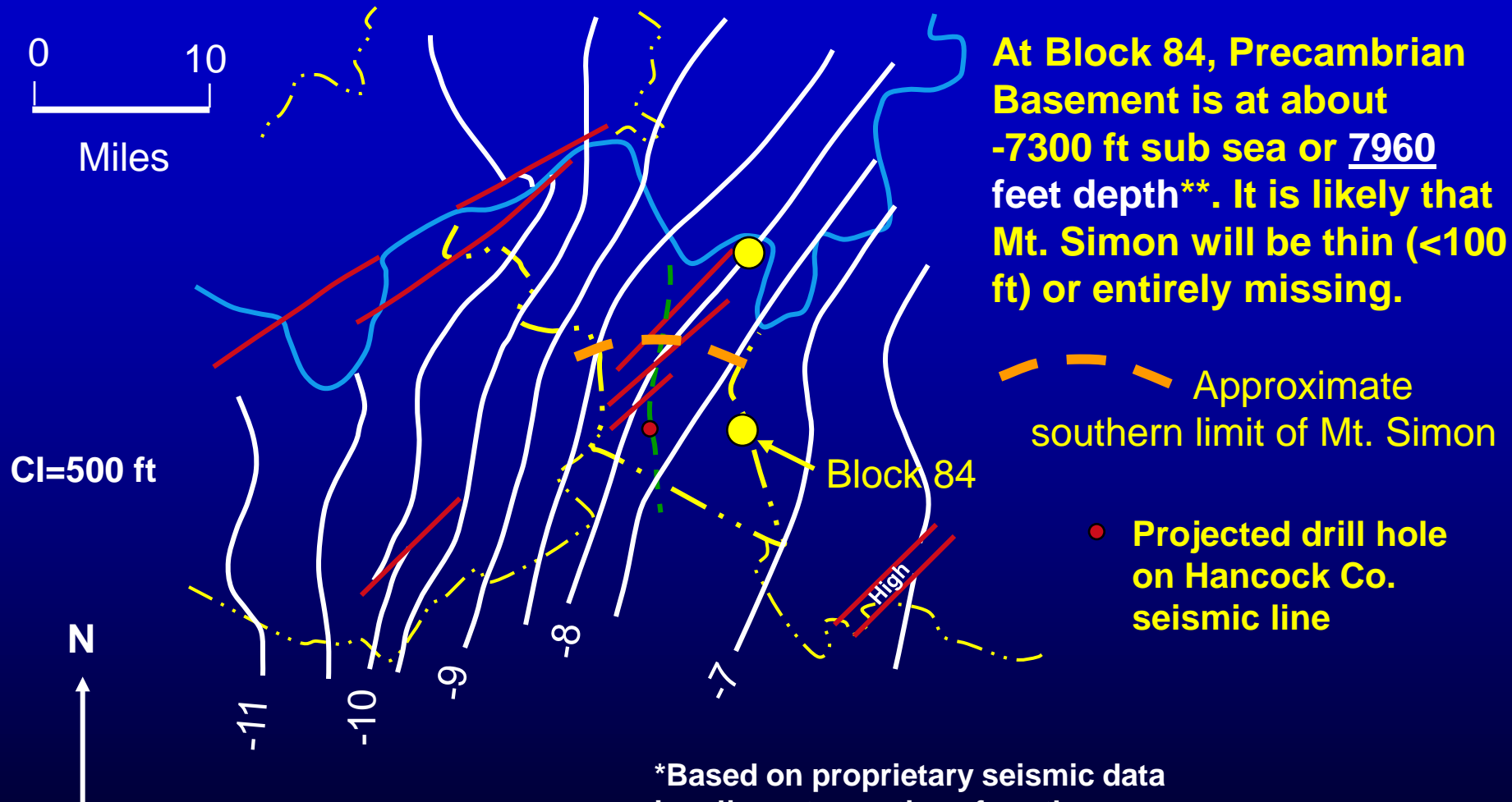
*Based on proprietary seismic data in adjacent counties of northern Kentucky and southern Indiana

**Assuming ground elevation of 660 ft.

Top of Eau Claire Formation in Hancock Co., Kentucky* (in thousands of feet sub sea)



Top of Precambrian Basement in Hancock Co., Kentucky* (in thousands of feet sub sea)



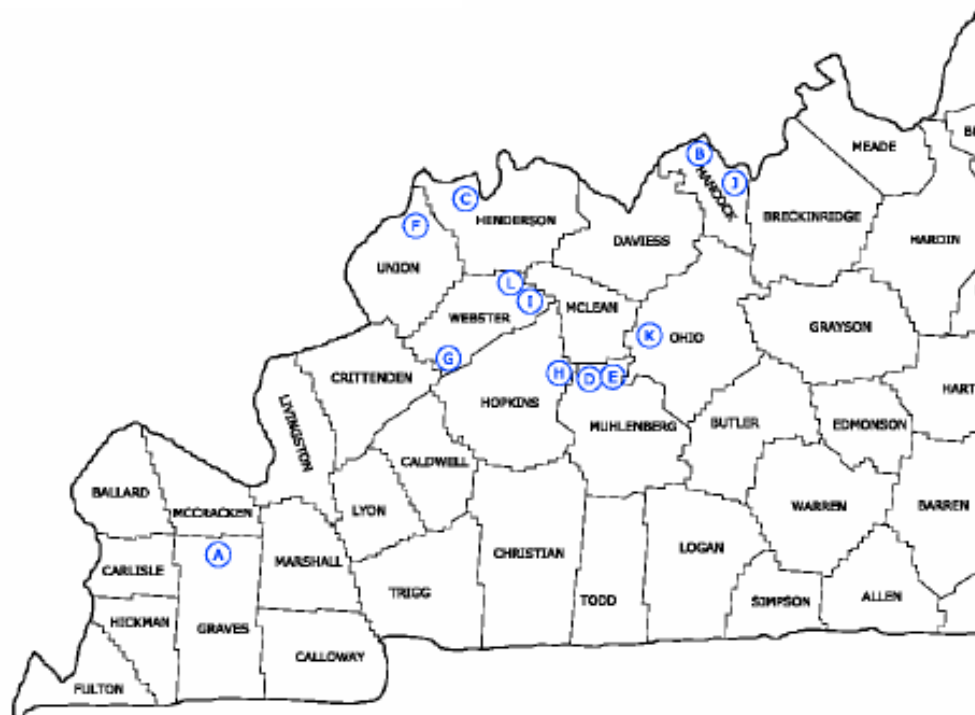
*Based on proprietary seismic data in adjacent counties of northern Kentucky and southern Indiana

**Assuming ground elevation of 660 ft.

KYCCS.ORG

drahovzal@uky.edu
williams@uky.edu
j.r.bowersox@uky.edu
dcharris@uky.edu

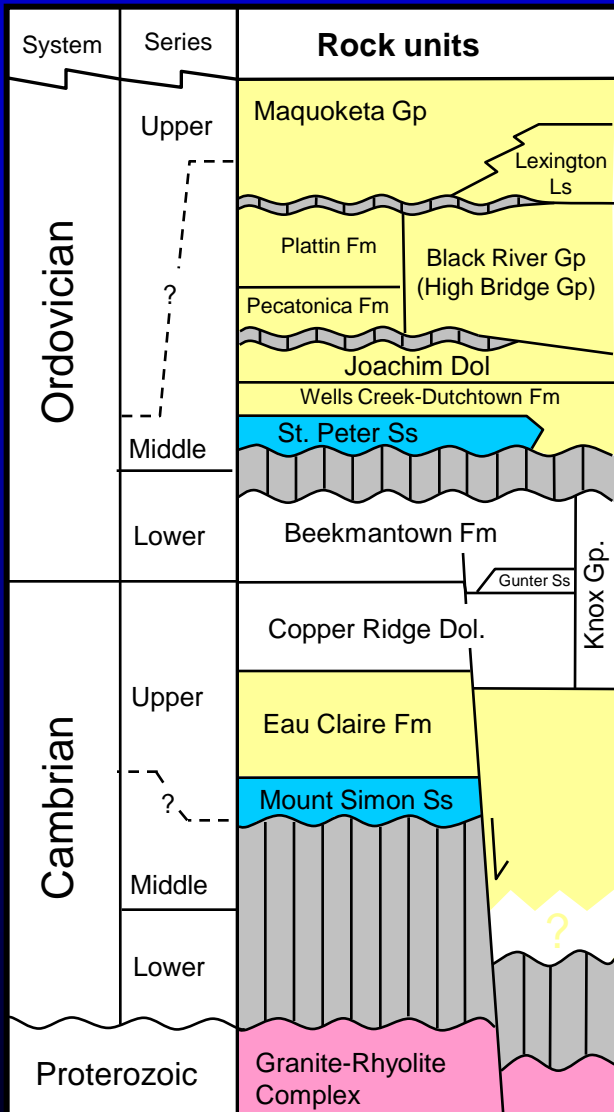
Kentucky Site Bank Locations



PROPOSED PROPERTIES FOR SITE BANK

A	PURCHASE REGIONAL INDUSTRIAL PARK
B	HANCOCK COUNTY - LEWISPORT
C	AMERICAN ELECTRIC POWER - HENDERSON
D	BRIER CREEK - KENAMERICAN COAL
E	PARADISE MINE - KENAMERICAN COAL
F	RIVER VIEW COAL - ALLIANCE
G	WEBSTER COUNTY - ALLIANCE
H	HOPKINS COUNTY - ALLIANCE
I	STEAMPORT, ALLIED RESOURCES
J	HANCOCK COUNTY - SKILLMAN BOTTOM
K	D.B. WILSON POWER STATION
L	ADJACENT PROPERTY - REID-GREEN POWER STATION
M	CHESHOLM MINE, PHELPS
N	TECO COAL - PREMIER ELKHORN, MYRA
O	CLAY COUNTY INDUSTRIAL PARK
P	TECO COAL - PERRY COUNTY COAL - HAZARD
Q	J.K. SMITH POWER STATION
R	SOUTH SHORE - GREENUP COUNTY
S	CH DEVELOPMENT - CORBIN

Western Kentucky Stratigraphic Units with CO₂ Storage Potential



- Potential CO₂ sinks/ reservoirs
- Caprock-containment interval
- Unconformity
- Sink or seal
(depends on location)
- Basement Metamorphic and igneous rocks
(mostly seal)