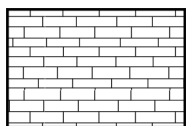
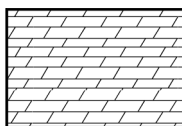


# Legend for Knox Core Descriptions Plates 2.1–2.5

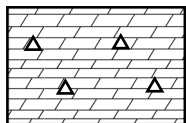
## Lithology Patterns



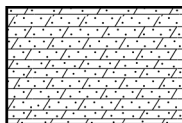
limestone



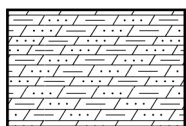
dolomite



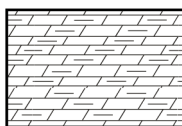
cherty dolomite



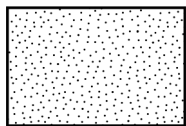
sandy dolomite



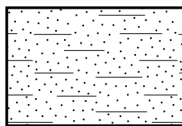
sandy argill. dolomite



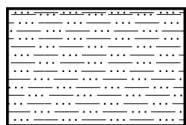
argill. dolomite



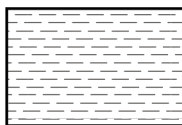
sandstone



argill. sandstone



siltstone



shale

## Porosity Types

V	Vuggy porosity
MV	Micro-vuggy porosity (mm-scale)
IC	Intercrystalline dolomite porosity
M	Moldic porosity
IG	Intergranular porosity

## Grain Types



intraclasts



echinoderm



bryozoan



brachiopod



gastropod



stromatoporoid



coated grain

## Other Features



chert



stromatolite



thrombolite



dessication (mud) cacks



open or partly-open fracture



healed fracture



vug



stylolite



bioturbation



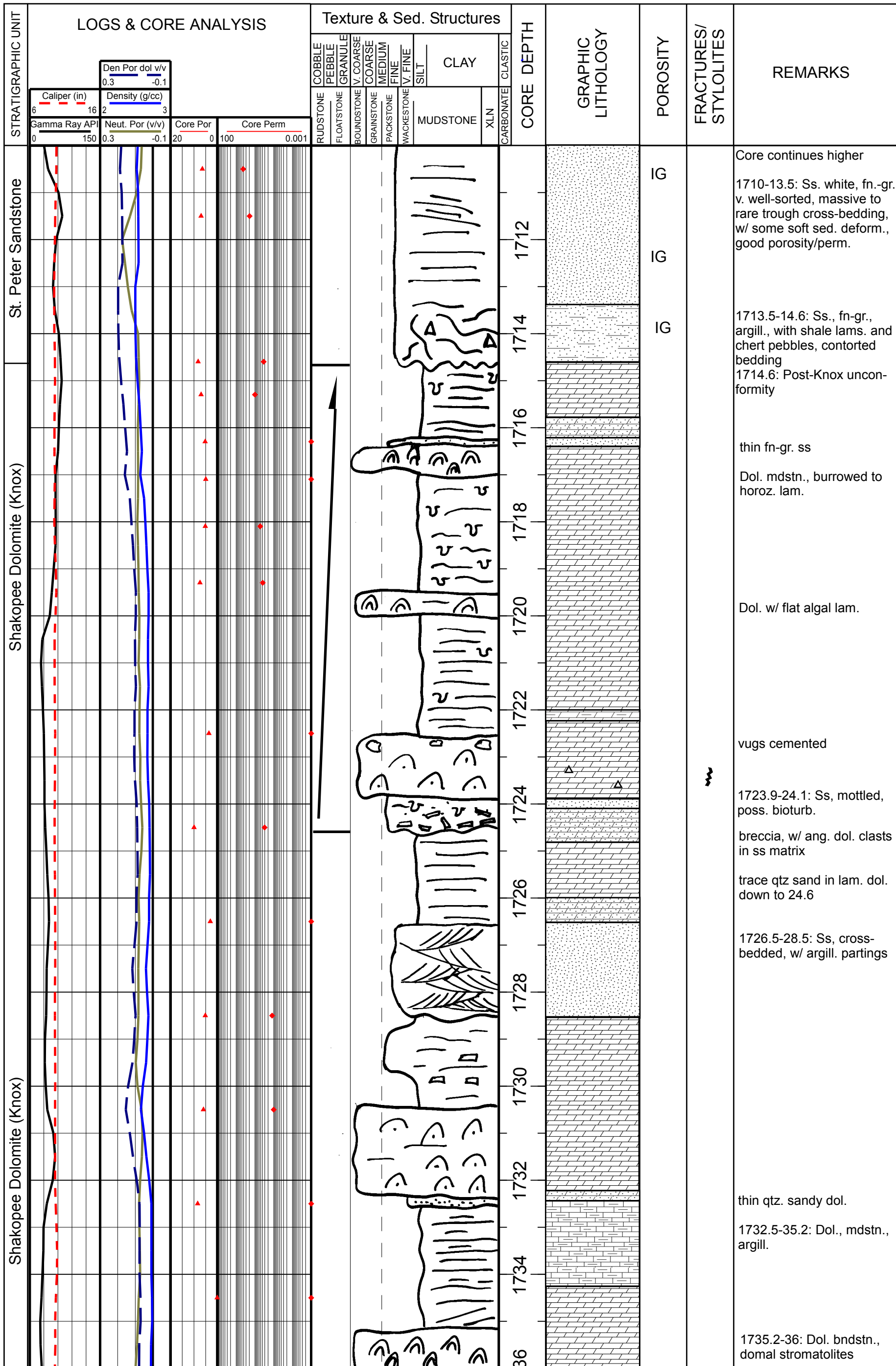
ripple cross-bedding



trough cross-bedding

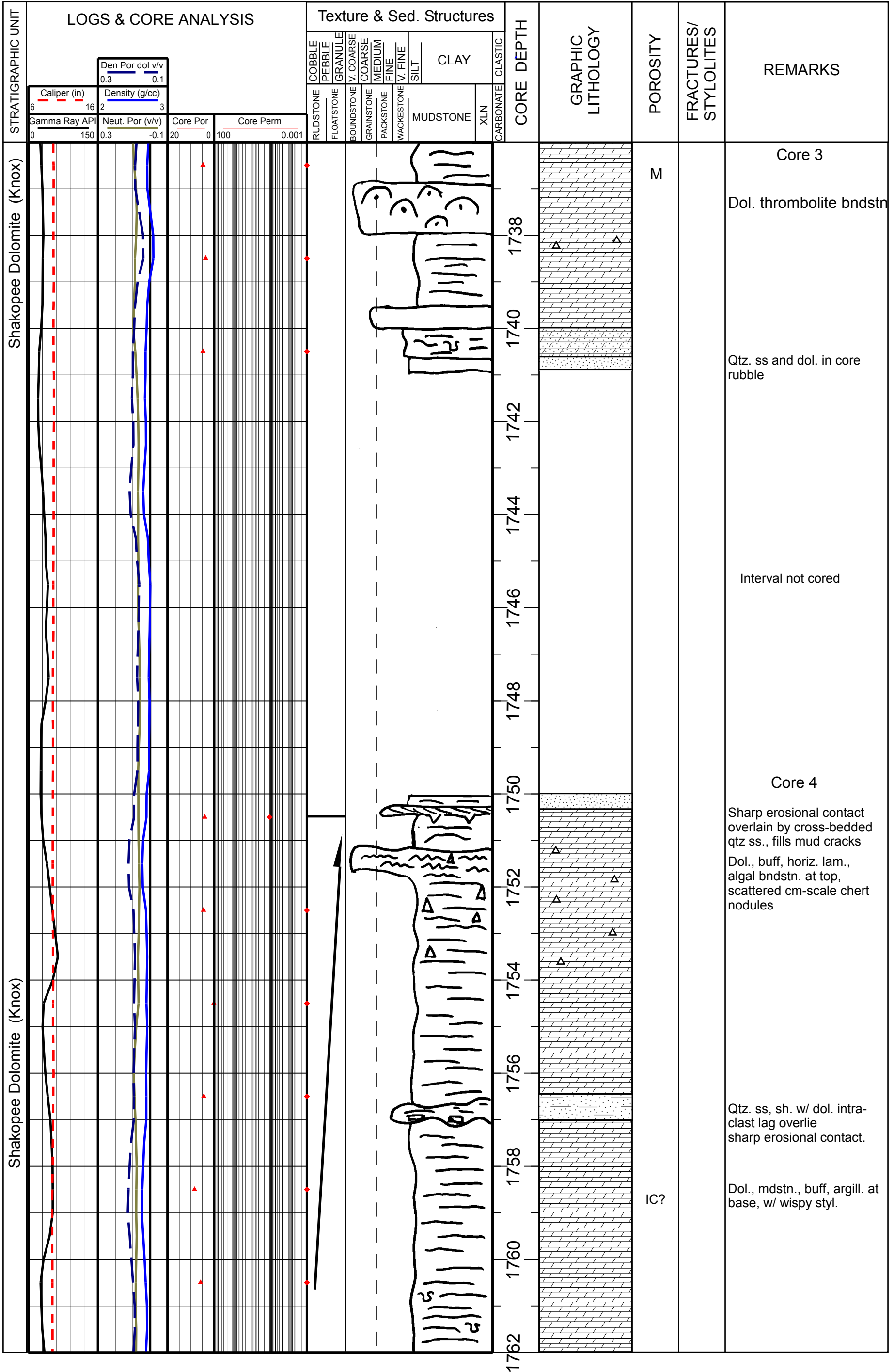
WELL: E.I. Dupont No. 1WAD E.I. Dupont  
 PERMIT: 24576  
 COUNTY: Jefferson Co., Ky. ELEVATION: 452 ft  
 CARTER COORD.: 10-U-44

DEPTH: 1710-1736 ft  
 SHEET 1 OF 7  
 DESCRIBED BY: D. C. Harris  
 VERTICAL SCALE: 1 in = 2 ft



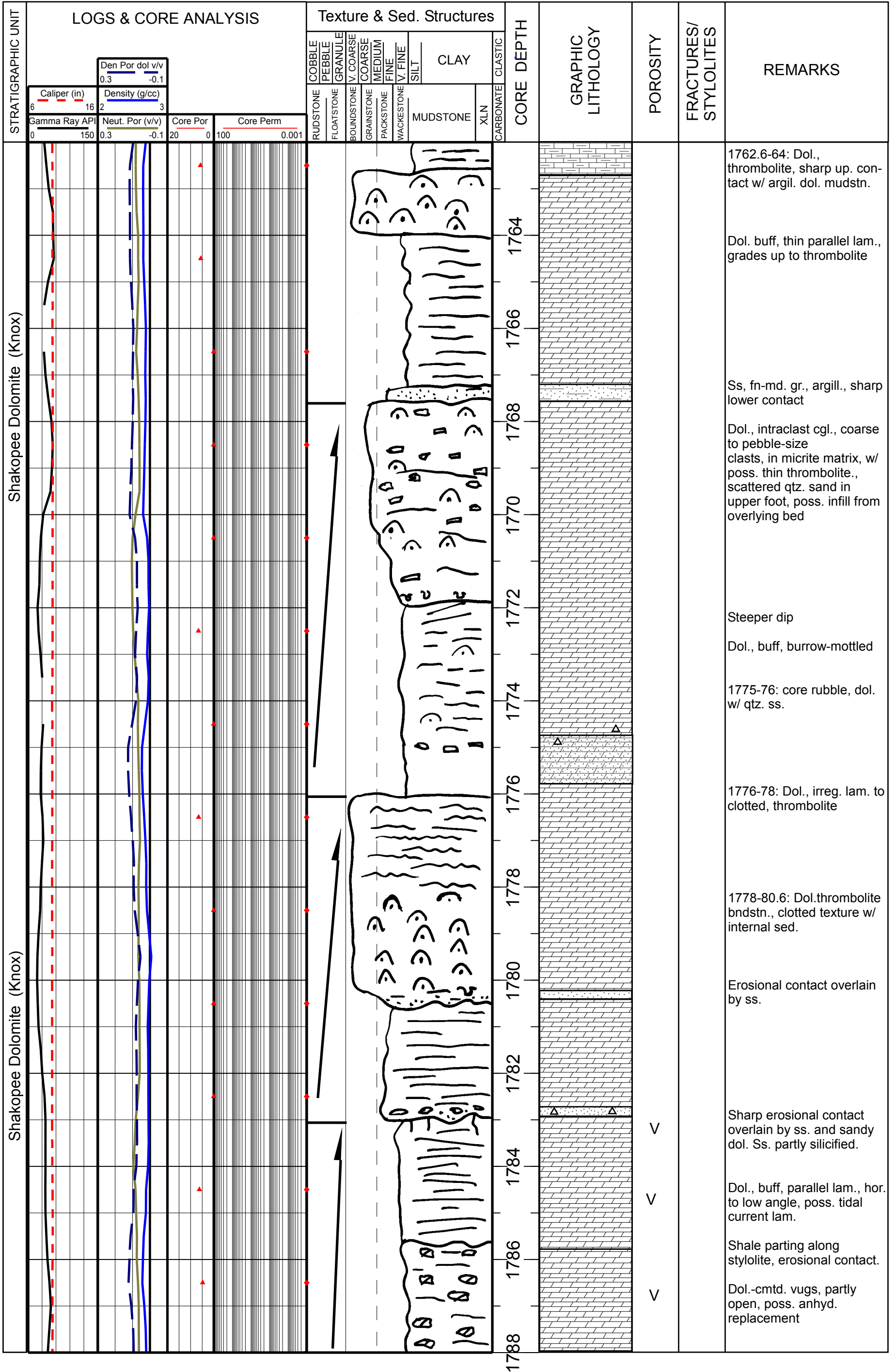
WELL: E.I. Dupont No. 1WAD E.I. Dupont  
 PERMIT: 24576  
 COUNTY: Jefferson Co., Ky. ELEVATION: 452 ft  
 CARTER COORD.: 10-U-44

DEPTH: 1736-1762 ft  
 SHEET 2 OF 7  
 DESCRIBED BY: D. C. Harris  
 VERTICAL SCALE: 1 in = 2 ft



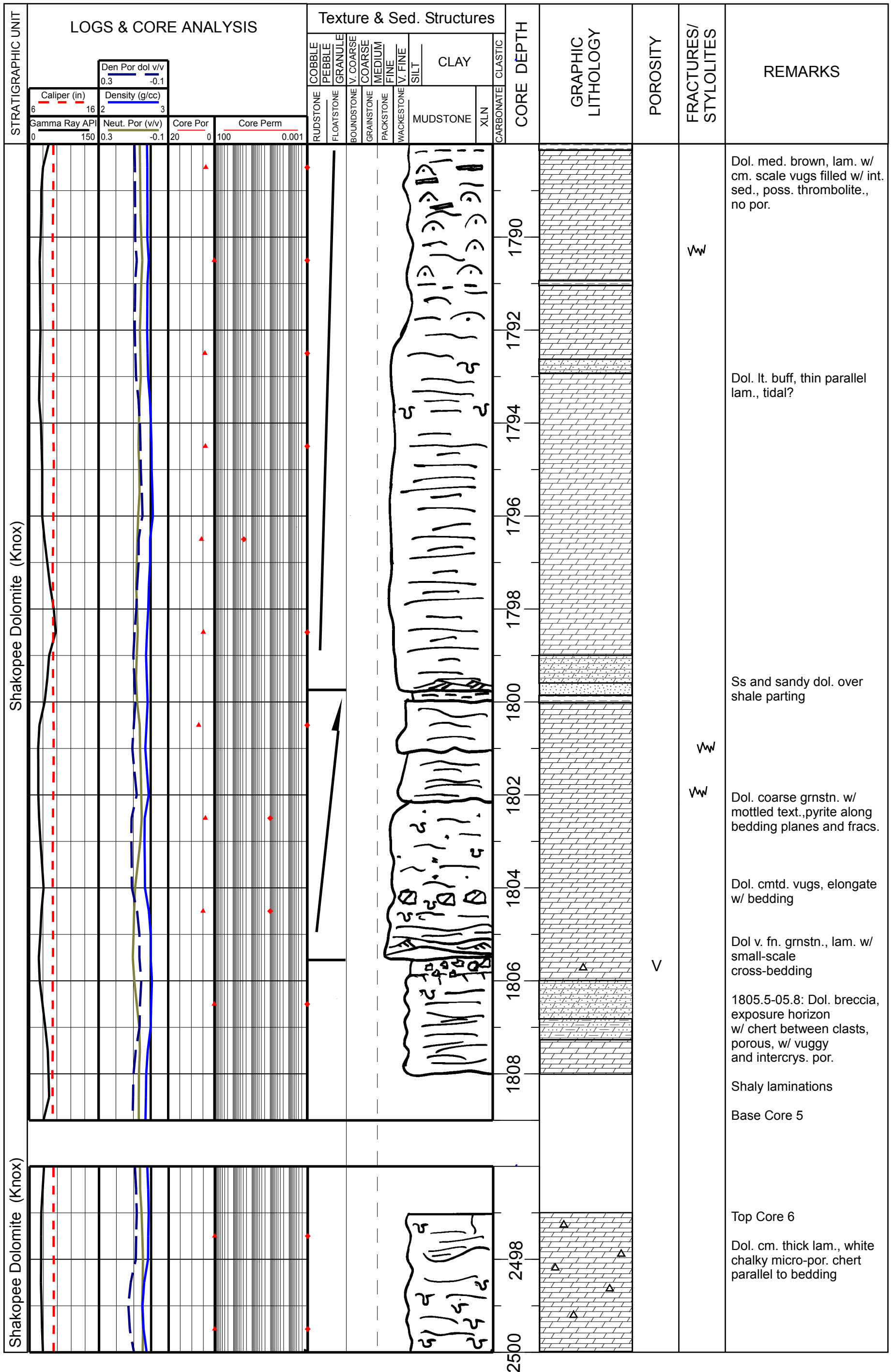
WELL: E.I. Dupont No. 1WAD E.I. Dupont  
 PERMIT: 24576  
 COUNTY: Jefferson Co., Ky. ELEVATION: 452 ft  
 CARTER COORD.: 10-U-44

DEPTH: 1762-1788 ft  
 SHEET 3 OF 7  
 DESCRIBED BY: D. C. Harris  
 VERTICAL SCALE: 1 in = 2 ft



WELL: E.I. Dupont No. 1WAD E.I. Dupont  
 PERMIT: 24576  
 COUNTY: Jefferson Co., Ky. ELEVATION: 452 ft  
 CARTER COORD.: 10-U-44

DEPTH: 1788–2500 ft  
 SHEET 4 OF 7  
 DESCRIBED BY: D. C. Harris  
 VERTICAL SCALE: 1 in = 2 ft







WELL: E.I. Dupont No. 1WAD E.I. Dupont  
 PERMIT: 24576  
 COUNTY: Jefferson Co., Ky. ELEVATION: 452 ft  
 CARTER COORD.: 10-U-44

DEPTH: 2526-2726.8 ft  
 SHEET 6 OF 7  
 DESCRIBED BY: D. C. Harris  
 VERTICAL SCALE: 1 in = 2 ft

# Plate 2.1.6



STRATIGRAPHIC UNIT	LOGS & CORE ANALYSIS				Texture & Sed. Structures										CORE DEPTH	GRAPHIC LITHOLOGY	POROSITY	FRACTURES/STYLOLITES	REMARKS				
	Caliper (in)	Density (g/cc)	Neut. Por (v/v)	Core Por	Core Perm	COBBLE	PEBBLE	GRANULE	V. COARSE	COARSE	MEDIUM	FINE	V. FINE	SILT						CLAY	MUDSTONE	XLIN	CARBONATE
Shakopee Dolomite (Knox)	6	2	0.3	20	100														2526				2526-29: Dol., med-brown, flat pebble cgl., pebble to cobble-size, micrite matrix, poss. mudcracks on bedding plane at 2527
	16	3	-0.1	0	0.001														2528				2529-31: Dol. med-brown, argill., w/ wispy styl., horoz. lam. w/ burrows, few dol.-cntd. vugs- no open vugs
																			2530				Bottom Core 6
Oneota Dolomite (Knox)																			2532				Core 7
																			2576				Dol., buff, mudstn., cherty, w/ rare dol. lined vugs
Oneota Dolomite (Knox)																			2578				Bottom core 7
																			2716				Core 8
																			2718				stylolite wrapped around chert nodule, w/ iron stain
																			2720				2717.5-26.8: Dol., buff, mudstn. to wkstn., horiz. lam., w/ abund. burrows
																			2722				Scattered chert nodules
																			2724				from 2722 to 26.8 has scattered open vugs lined with saddle dol cement., dol. matrix is tight.
																			2726				vugs round to elongate along bedding.
																			2726.8				
																			2728				Bottom core 8

WELL: E.I. Dupont No. 1WAD E.I. Dupont  
 PERMIT: 24576  
 COUNTY: Jefferson Co., Ky. ELEVATION: 452 ft  
 CARTER COORD.: 10-U-44

DEPTH: 2804-2830 ft  
 SHEET 7 OF 7  
 DESCRIBED BY: D. C. Harris  
 VERTICAL SCALE: 1 in = 2 ft

# Plate 2.1.7

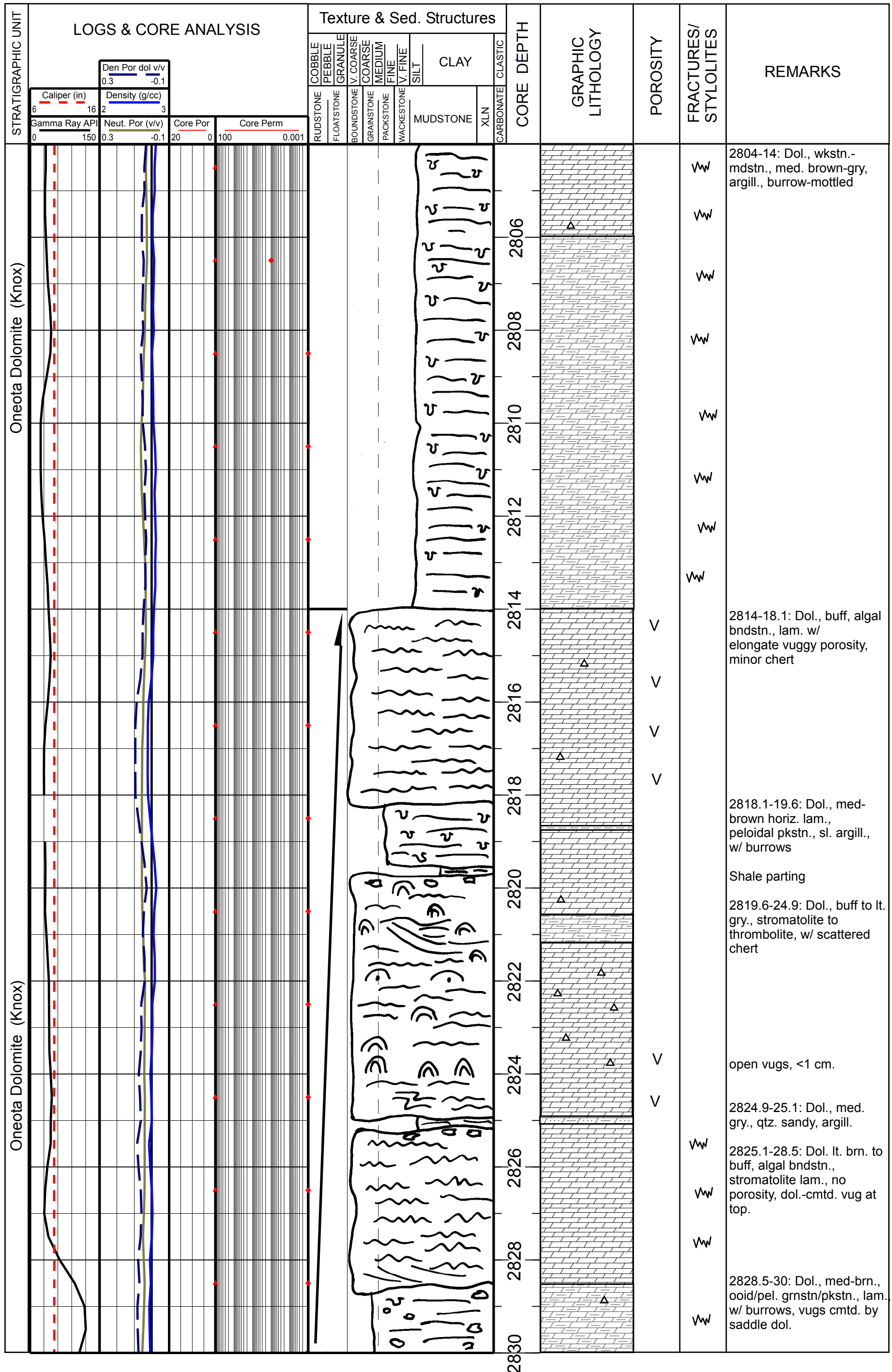


Plate 2.1.7