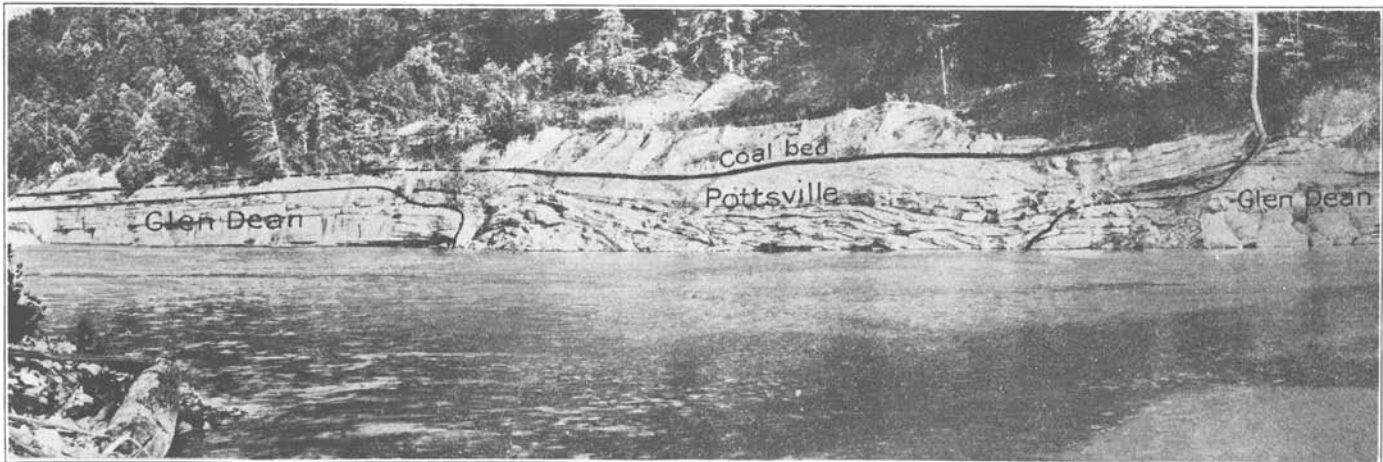


MISSISSIPPIAN SERIES
OF EASTERN KENTUCKY

CHARLES BUTTS





ANCIENT VALLEY IN THE GLEN DEAN LIMESTONE FILLED WITH POTTSVILLE SANDSTONE AND COAL BED.

View of a pre-Pottsville erosion channel in the Glen Dean limestone occupied by Pottsville sandstone with thin coal beds. Heidelberg, Ky., about four miles southwest of Beattyville. Pottsville-Glen Dean contact marked by ink line. Coal bed also marked with heavier line.

The
Kentucky Geological
Survey

WILLARD ROUSE JILLSON
DIRECTOR AND STATE GEOLOGIST



SERIES SIX
VOLUME SEVEN

Mississippian Series of
Eastern Kentucky

1922

The MISSISSIPPIAN SERIES *of* EASTERN KENTUCKY

A Regional Interpretation of the Stratigraphic Relations of the
Sub-carboniferous group based on new
and detailed field examinations.



BY
CHARLES BUTTS
ASSISTANT GEOLOGIST

PREPARED IN CO-OPERATION WITH THE
UNITED STATES GEOLOGICAL SURVEY

*Illustrated with Ninety-three Photographs,
Maps and Diagrams*

FIRST EDITION
500 COPIES

THE KENTUCKY GEOLOGICAL SURVEY
FRANKFORT, Ky.
1922

THE STATE JOURNAL COMPANY
Printer to the Commonwealth
Frankfort, Kentucky.

Letter of Transmission

Nov. 12, 1921.

Dr. W. R. JILLSON:
Director and State Geologist,
Kentucky Geological Survey,
Frankfort, Ky.

DEAR DOCTOR JILLSON:

Under separate cover, I am sending to you by registered mail the manuscript, maps and other illustrations for a report by Charles Butts on "The Mississippian Series of Eastern Kentucky." This report is based upon work done in cooperation with the Kentucky Geological Survey and should bear appropriate acknowledgment. It completes, I believe, the report matter, resulting from the cooperative project, to be published by the State.

Very truly yours,

GEORGE OTIS SMITH,

Director.

Dept. of the Interior,
U. S. Geological Survey,
Washington, D. C.

Contents

Letter of Transmission.....	v
Chapter I. Introduction..	1
Chapter II. Mississippian Formations—Older than the New Providence Group.....	15
Chapter III. New Providence Group.....	29
Chapter IV. Rocks of Keokuk Age.....	73
Chapter V. Meramec Group	89
Chapter VI. Ste. Genevieve Limestone	137
Chapter VII. Chester Group	157
Index	185

Illustrations

(Plates and Figures)

Ancient Valley in the Glen Dean Limestone filled with Pottsville Sandstone and Coal Beds		Frontispiece
		Page
Plate 1.	Ohio shale, showing Huron shale representative	5
Plate 2.	Gray clay in Ohio black shale	8
Fig. 1.	Ideal sections of the Ohio shale	14
Plate 3.	Sunbury shale underlain by Bedford	21
Plate 4.	Berea sandstone, Vanceburg, Ky.	24
Plate 5.	Berea sandstone overlain by Sunbury	25
Plate 6.	Berea sandstone, Kinniconick Branch	25
Plate 7.	Berea sandstone showing ripples	26
Plate 8.	Knob near Lebanon, Ky.	30
Plate 9.	Minerva Mt., Irvine, Ky.	31
Plate 10.	View east from Irvine, Ky.	32
Plate 11.	Denuded New Providence Shale	33
Plate 12.	Characteristic weathering of New Providence	34
Plate 13.	Irregular bedding in New Providence	35
Plate 14.	Bluff near Owsley Branch	37
Plate 15.	"Vanceburg facies" of the Cuyahoga	38
Plate 16.	Logan sandstone	39
Plate 17.	View of Logan sandstone	40
Plate 18.	Buena Vista sandstone	42
Plate 19.	Beaver Creek oil "sand"	44
Plate 20.	Near View Beaver Creek oil "sand"	45
Plate 21.	Deep Cut Kinniconick Branch	46
Plate 22.	Morris Mountain near Stanton, Ky.	48
Plate 23.	Buena Vista showing Taonurus	63
Plate 24.	Buena Vista showing worm trails	64
Plate 25.	Spirifer Milleranus	68
Plate 26.	Spirifer imbrex and milleranus	69
Plate 27.	Spirifer imbrex, Hall	70
Plate 28.	New Providence and Fort Payne	74
Plate 29.	View of comb on Beaver Creek	75
Plate 30.	Road cut on Tompkinsville pike	79
Plate 31.	Basal Fort Payne	79
Plate 32.	Fort Payne chert	80
Plate 33.	Quarry at West Point, Ky.	90
Plate 34.	Cross lamination of the Warsaw	92
Plate 35.	Massive bed of Warsaw limestone	93
Plate 36.	Quarry at Glasgow, Ky.	93
Plate 37.	"Harrodsburg facies" of the Warsaw	94
Plate 38.	Warsaw limestone and Rosewood shale	95
Plate 39.	Type section of the "Harrodsburg"	95
Plate 40.	Tunnel at Hummel	96
Plate 41.	Highway at head of Owsley Branch	96
Plate 42.	Cut between Maretburg and Brodhead	97
Plate 43.	Replacement in the Warsaw	98

	Page
Plate 44. Spally bed in the Warsaw	99
Plate 45. Uniformity in the Warsaw	101
Plate 46. Road cut at Langford	103
Plate 47. Cut at Somerset, Ky.	105
Plate 48. Tunnel north of Muldraugh, Ky.	106
Plate 49. Cut near Elizabethtown, Ky.	106
Plate 50. Geological sections (tipped in opp.)	120
Plate 51. Cut on Beaver Creek, Albany road	122
Plate 52. Railroad cut near Somerset, Ky.	123
Plate 53. Contact of St. Louis and Warsaw	124
Plate 54. Railroad cut near Mt. Vernon	126
Plate 55. Quarry south of Pineville	127
Plate 56. Ste. Genevieve-St. Louis contact	130
Plate 57. View down Kentucky River	131
Plate 58. Basal Ste. Genevieve oolite	132
Plate 59. Ste. Genevieve-St. Louis contact	133
Plate 60. Basal conglomerate Ste. Genevieve	133
Plate 61. Ste. Genevieve-New Providence contact	134
Plate 62. Old quarry near Somerset	134
Plate 63. Ste. Genevieve-St. Louis contact	135
Figs. 2 and 3. <i>Campophyllum gasperense</i>	136
Plate 64. Point of spur near Berea, Ky.	138
Plate 65. Pilot Knob near Berea, Ky.	139
Plate 66. Ste. Genevieve limestone	139
Plate 67. Quarry west of Mt. Vernon	140
Plate 68. Weathered Ste. Genevieve limestone	143
Plate 69. Geological sections	141
Plate 70. Quarry southwest of Livingston	145
Plate 71. Cut near Cedar Grove, Ky.	146
Plate 72. Cut south of Somerset, Ky.	146
Plate 73. Cut near Heidelberg, Ky.	147
Plate 74. Quarry near Olive Hill, Ky.	147
Plate 75. Quarry west of Carter	148
Plate 76. Quarry in Gasper oolite	149
Plate 77. Nodular limestone in Carter quarry	149
Plate 78. Cut between Elihu and Cedar Grove	150
Figs. 4, 5 and 6. <i>Campophyllum gasperense</i>	156
Plate 78-A. <i>Campophyllum gasperense</i> . nat. size	163
Plate 78-B. Reverse of Plate 78-A.	163
Plate 78-C. Detail of <i>Campophyllum gasperense</i>	164
Plate 78-D. <i>Campophyllum gasperense</i> , cluster	165
Plate 79. Cypress sandstone and Gasper oolite	166
Plate 80. Knob capped with Cypress sandstone	167
Plate 81. Glen Dean limestone and shale	173
Fig. 7. Diagrammatic section Eastern Kentucky coal field.	183

THE MISSISSIPPIAN SERIES
of EASTERN KENTUCKY