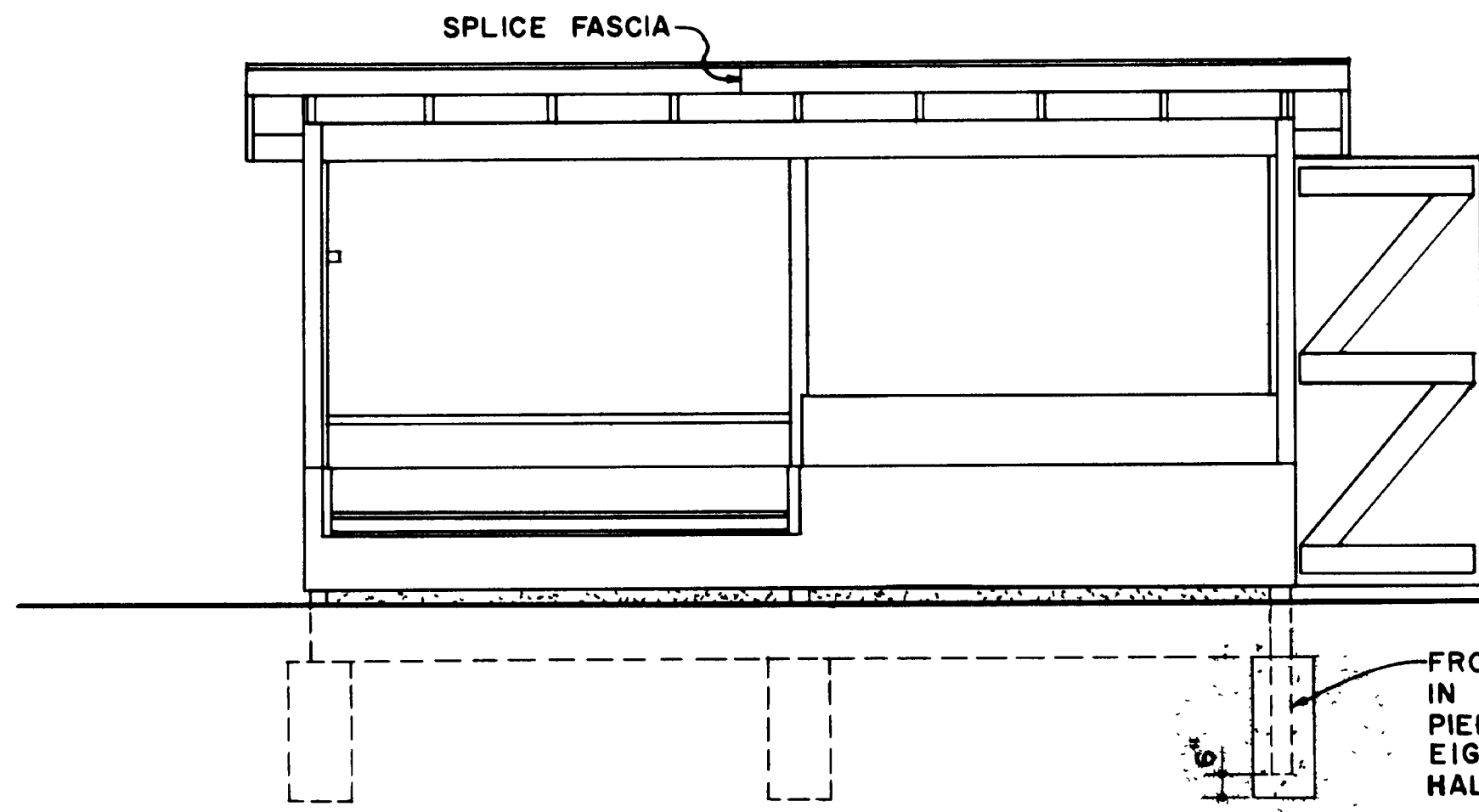


Important: Warranty Disclaimer for Plans

For the convenience of our clientele, this website makes available conceptual plans that can be helpful in planning buildings, facilities, or other structures. They were developed over many years by engineers at Land Grant universities through the former USDA Cooperative Farm Buildings Plan Exchange. *Regardless of the original intent, these are older plans that provide conceptual information only, and are not to be considered or used as construction plans.*

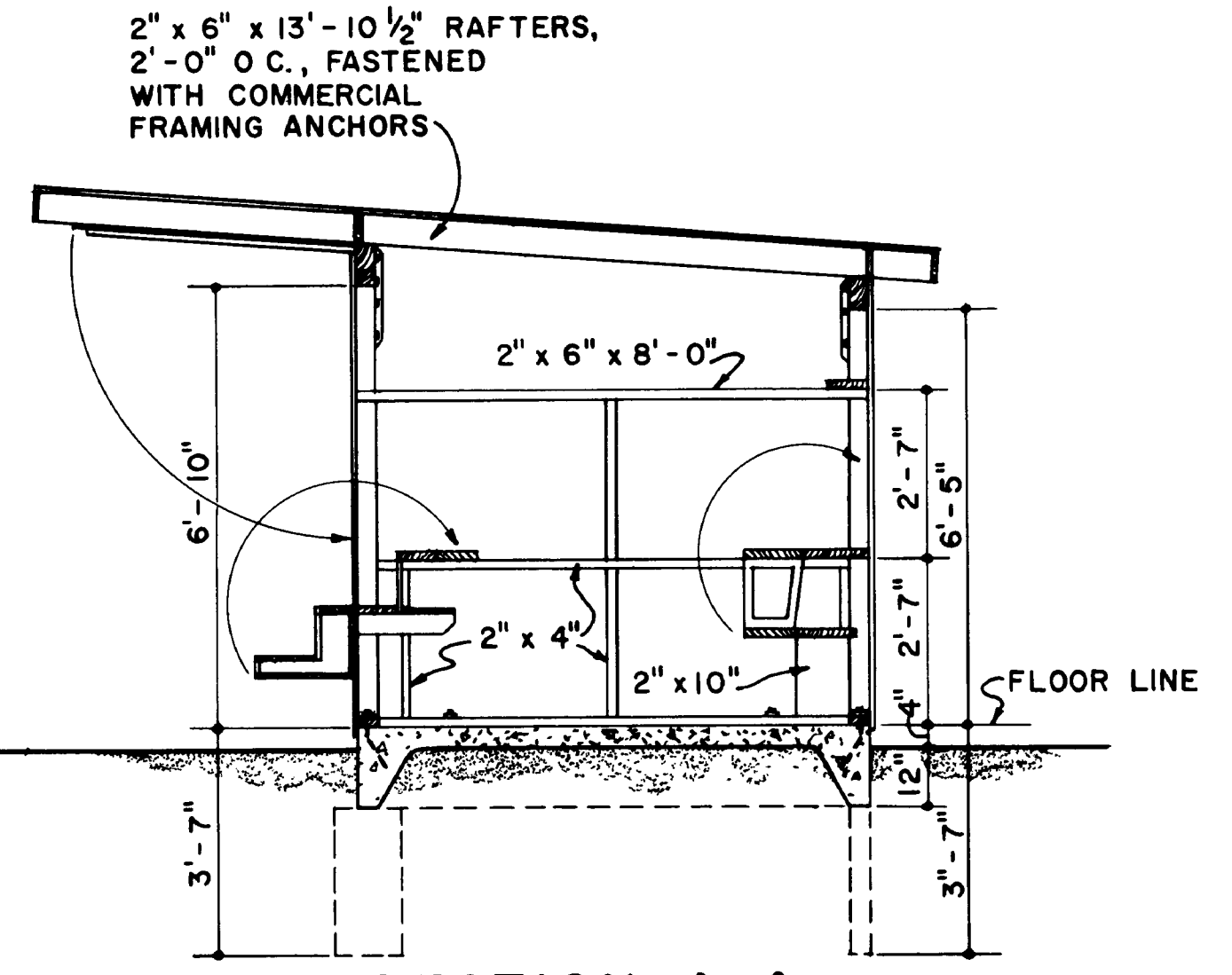
These plans do not claim to represent the most current technology or the most recent construction techniques, standards, or codes. For example, over the years there have been changes in the National Design Specifications for Wood Construction, changes in the strengths and types of building materials, and changes in fasteners, among other things. Those changes, along with variations in climate, building codes, and other factors, make it imperative that professional services be utilized for your specific project. Suggested services include, but are not limited to, structural design, assurance of compliance with codes and regulations, site selection, construction supervision, and provision for utilities, waste management, and access. *These plans do not replace the need for competent design assistance in developing safe, legal, and well-functioning agricultural buildings and systems.*

Neither the University of Kentucky, the Midwest Plan Service, the United States Department of Agriculture, nor any of the cooperating Land Grant universities, warranty these plans. They are for conceptual use only and are not for use as construction plans.

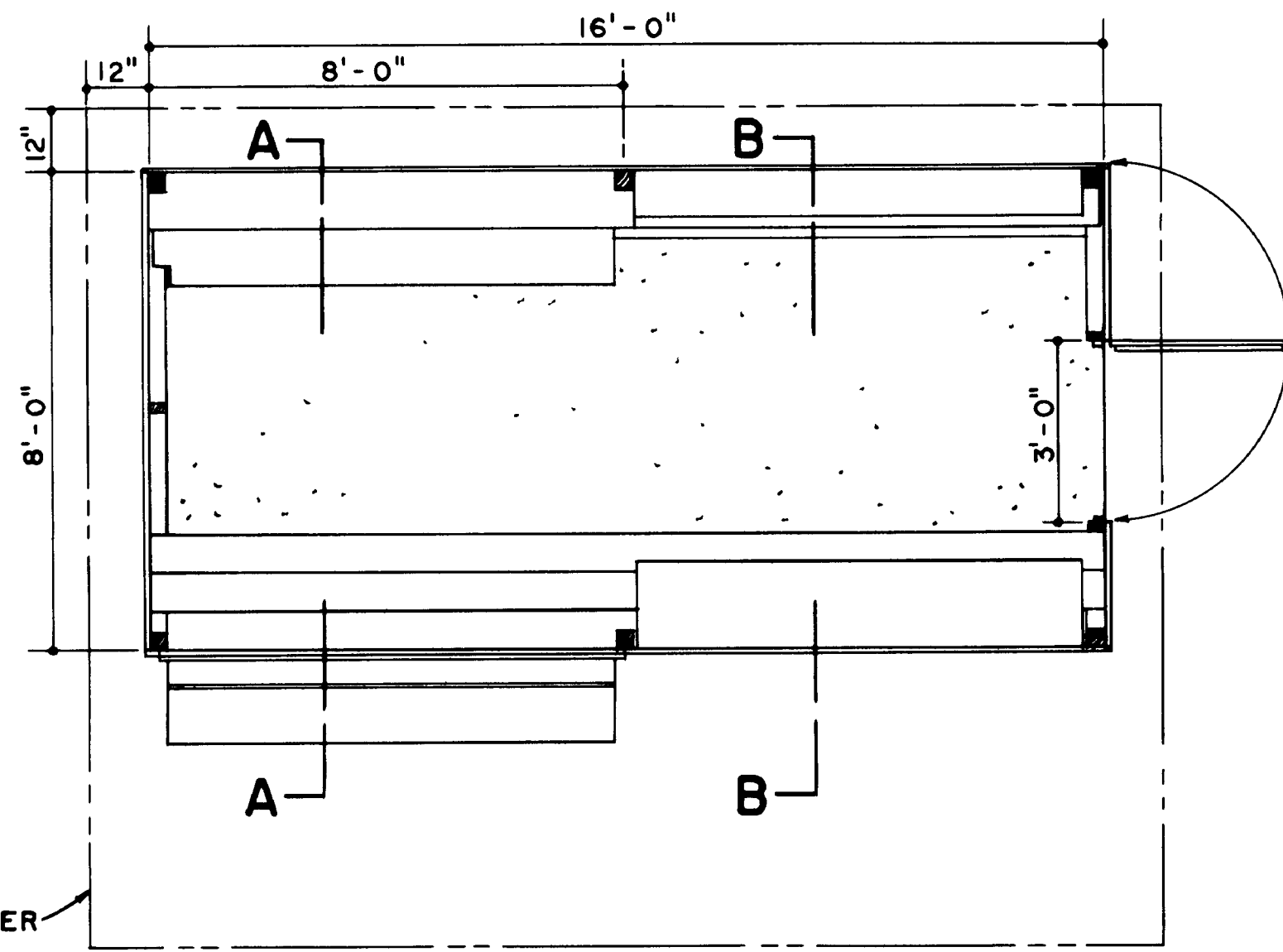


FRONT ELEVATION
HINGED COVERS NOT SHOWN

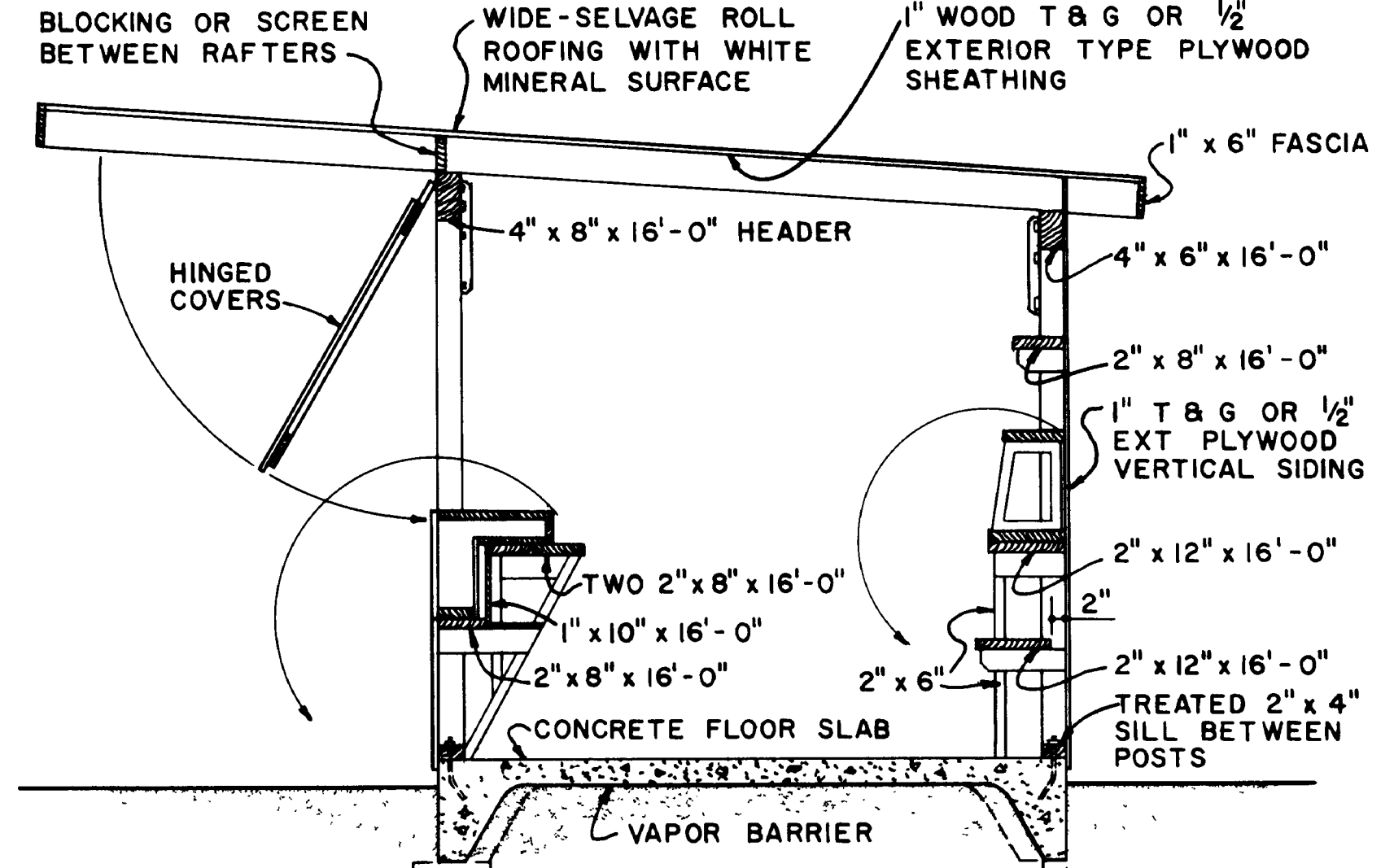
FRONT POSTS ARE SET IN 12" DIAMETER CONCRETE PIERS AND BONDED WITH EIGHT 20d NAILS DRIVEN HALF WAY INTO EACH POST



SECTION A-A
SHOWING END WALL FRAMING



PLAN



SECTION B-B
SCALE: 1/2" = 1'-0"

ALL POSTS ARE 4" x 4" x 10'-0" PRESSURE-TREATED WITH A PRESERVATIVE TO A RETENTION OF 8 LBS PER CUBIC FOOT
USE OF PRESERVATIVES SUCH AS PENTACHLOROPHENOL OR COPPER-NAPHTHENATE WILL PERMIT THE POSTS TO BE PAINTED

FRONT POSTS ARE SECURED TO THE 4" x 8" HEADER WITH 1/2" x 1/2" x 1/8" STEEL ANGLES 18" LONG AND FOUR 3/8" x 3" LAG SCREWS
REAR POSTS ARE SECURED TO THE 4" x 6" WITH STEEL ANGLES 15" LONG AND THREE LAG SCREWS

ANCHOR SILLS TO SLAB WITH TWO 1/2" BOLTS 5'-0" APART BETWEEN POSTS, EXCEPT FOR THE BOLT AT THE HINGE SIDE OF THE DOOR JAMB

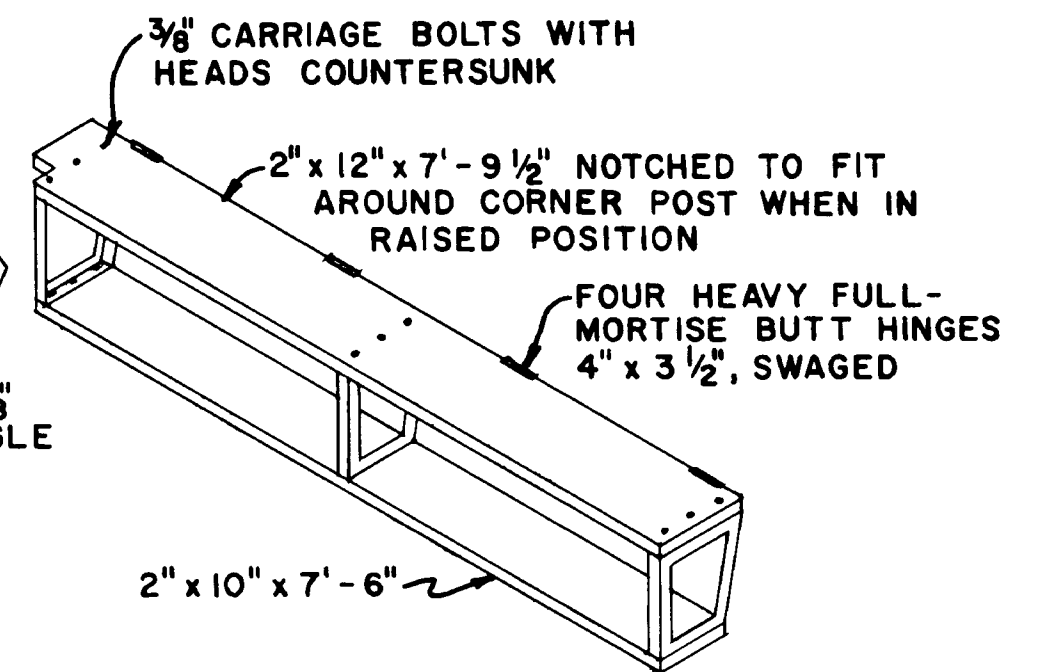
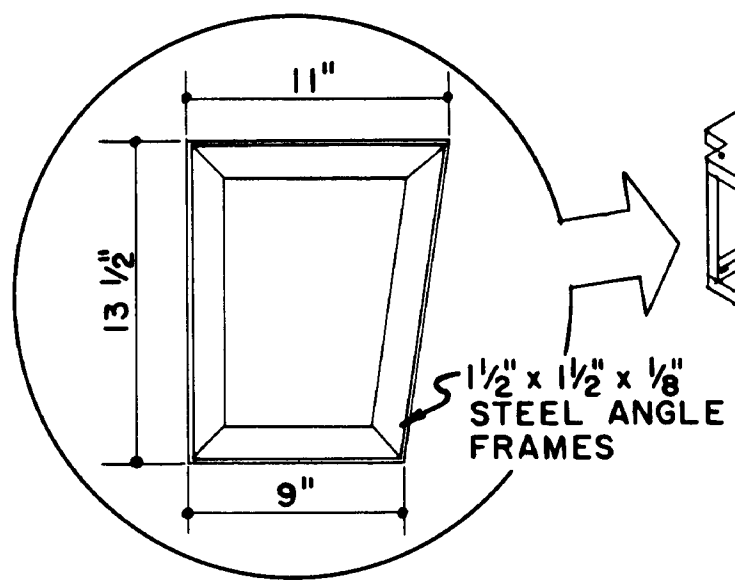
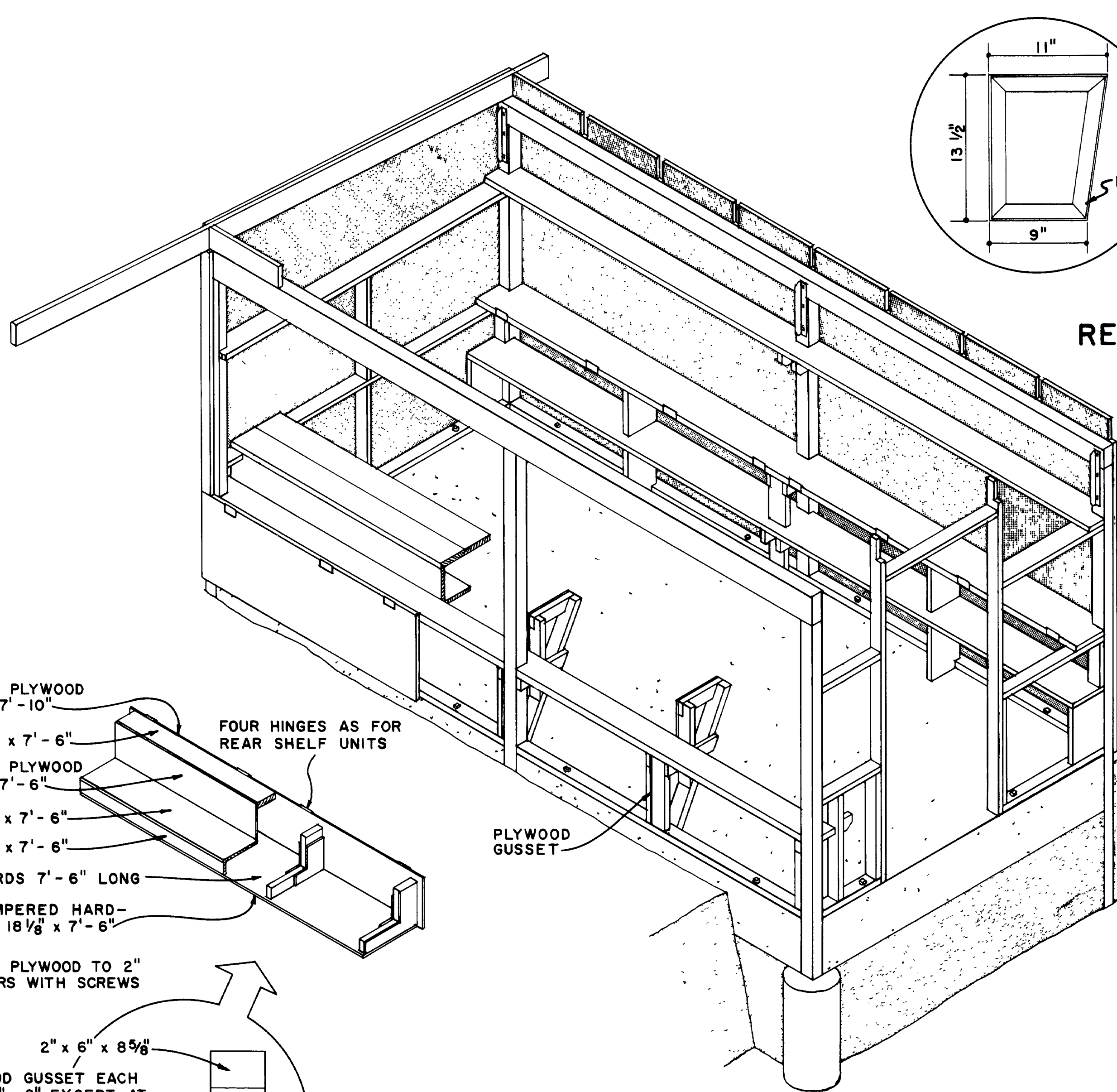
SCALE 3/8" = 1'-0" EXCEPT AS NOTED

COOPERATIVE EXTENSION WORK IN AGRICULTURE AND HOME ECONOMICS
DEPARTMENT OF AGRICULTURAL ENGINEERING
COLLEGE OF AGRICULTURE
UNIVERSITY OF KENTUCKY
AND
UNITED STATES DEPARTMENT OF AGRICULTURE COOPERATING

ROADSIDE STAND
8'-0" x 16'-0"

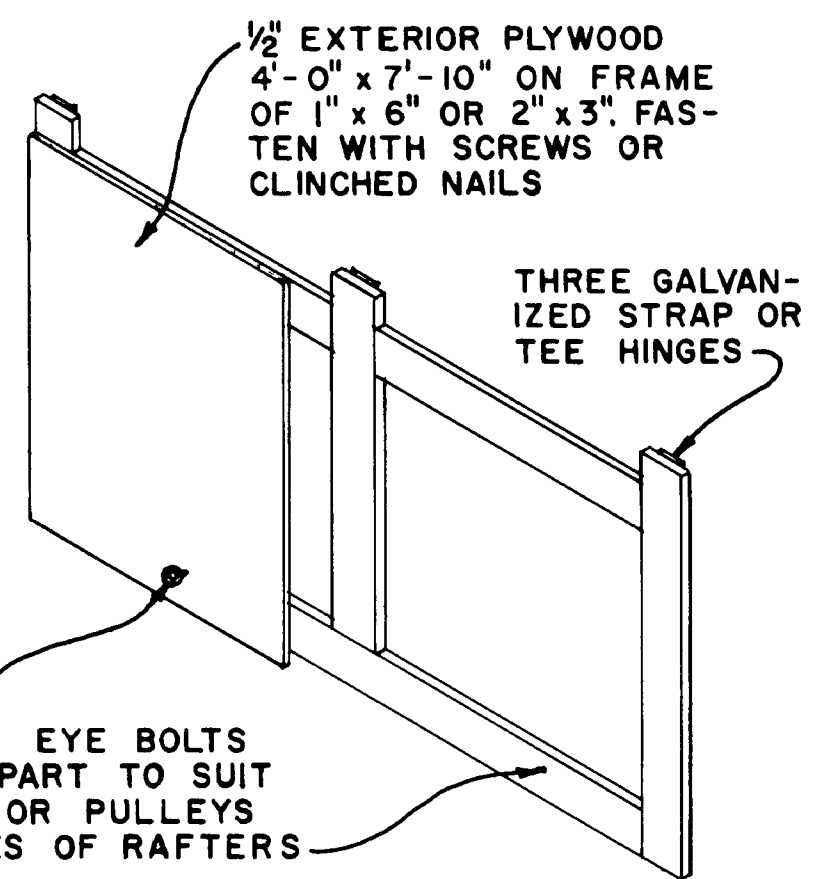
USDA '65 EX 5983 SHEET 1 OF 2

REVISED 1972



REAR HINGED SHELF UNIT

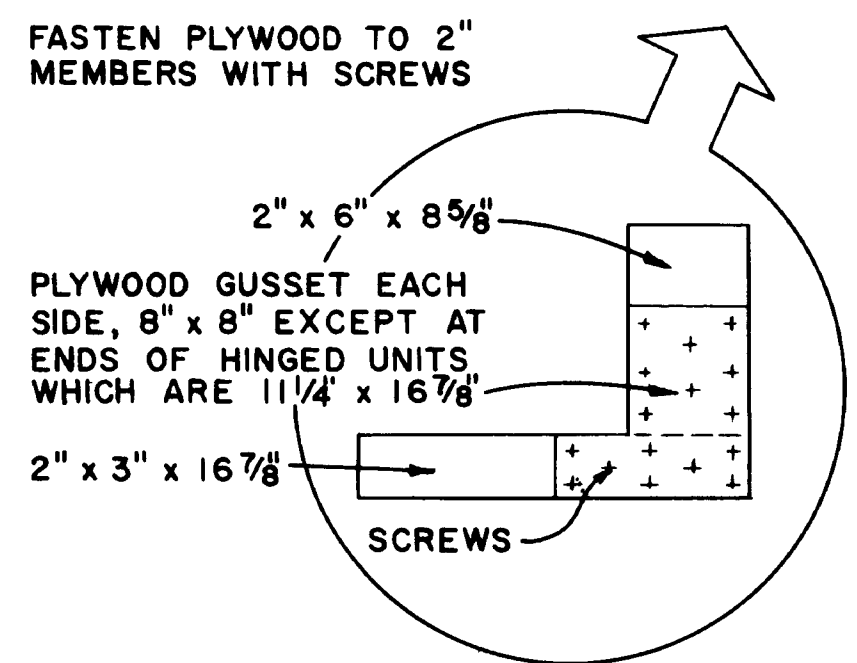
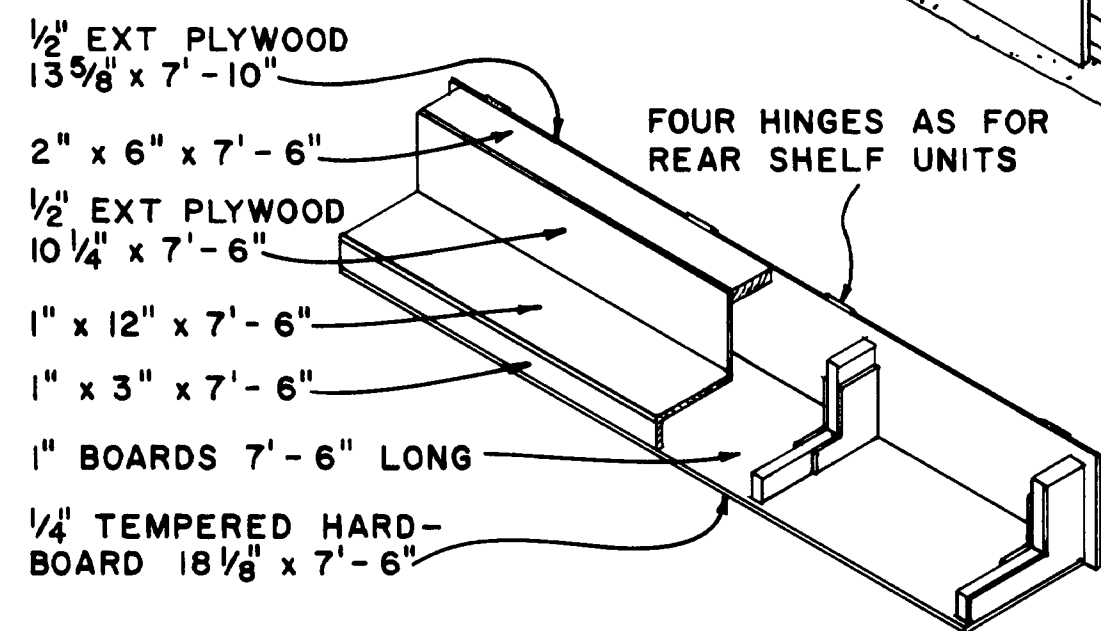
TWO REQUIRED



HINGED COVER

TWO REQUIRED

VIEW SHOWING CONSTRUCTION
CUT AWAY FOR CLARITY



COUNTER-DISPLAY UNIT

TWO REQUIRED

COOPERATIVE EXTENSION WORK IN AGRICULTURE AND HOME ECONOMICS
DEPARTMENT OF AGRICULTURAL ENGINEERING
COLLEGE OF AGRICULTURE
UNIVERSITY OF KENTUCKY
AND
UNITED STATES DEPARTMENT OF AGRICULTURE COOPERATING

ROADSIDE STAND
8'-0" x 16'-0"

USDA '65 EX 5983 SHEET 2 OF 2

REVIEWED 1972