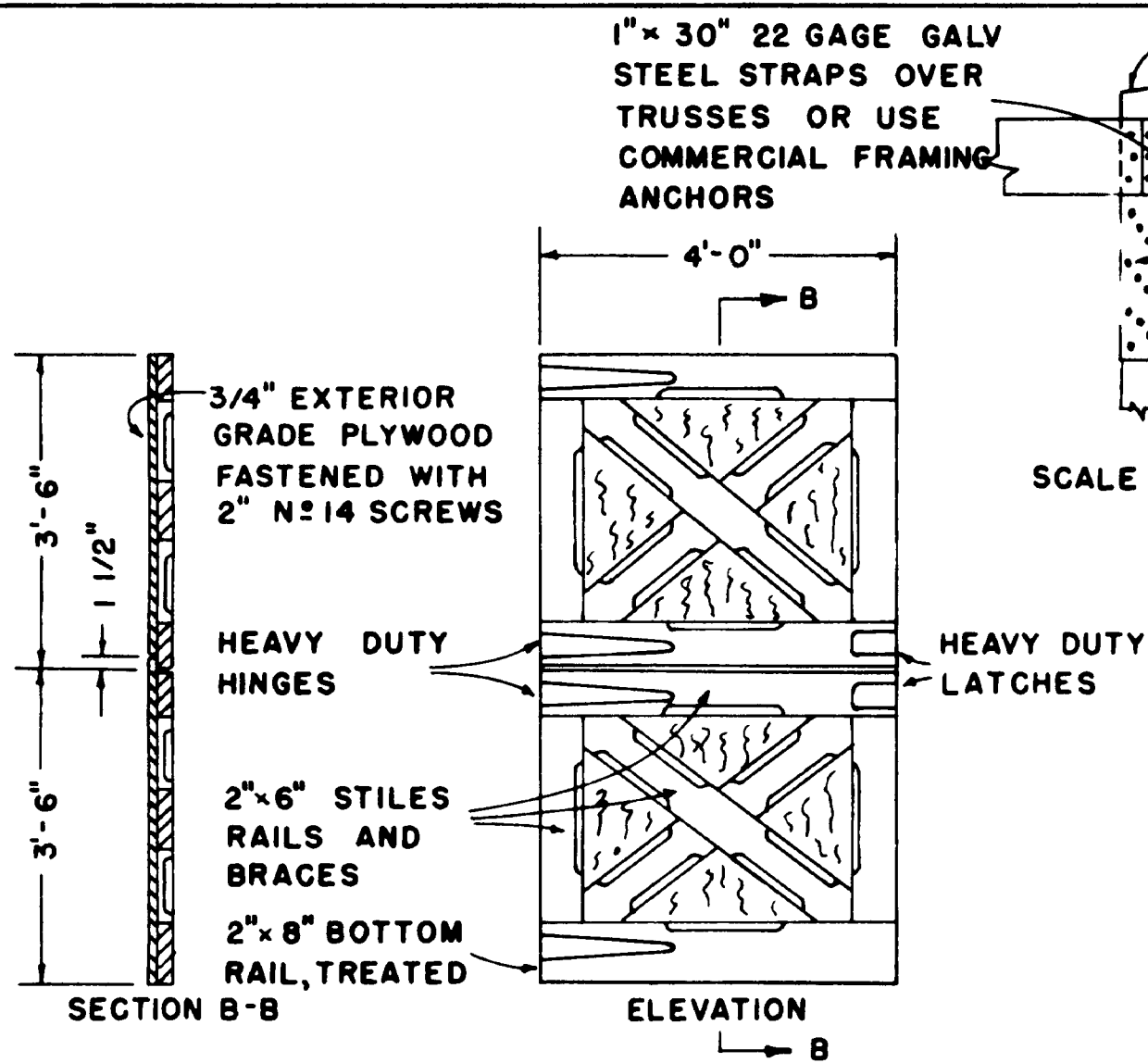


## **Important: Warranty Disclaimer for Plans**

For the convenience of our clientele, this website makes available conceptual plans that can be helpful in planning buildings, facilities, or other structures. They were developed over many years by engineers at Land Grant universities through the former USDA Cooperative Farm Buildings Plan Exchange. *Regardless of the original intent, these are older plans that provide conceptual information only, and are not to be considered or used as construction plans.*

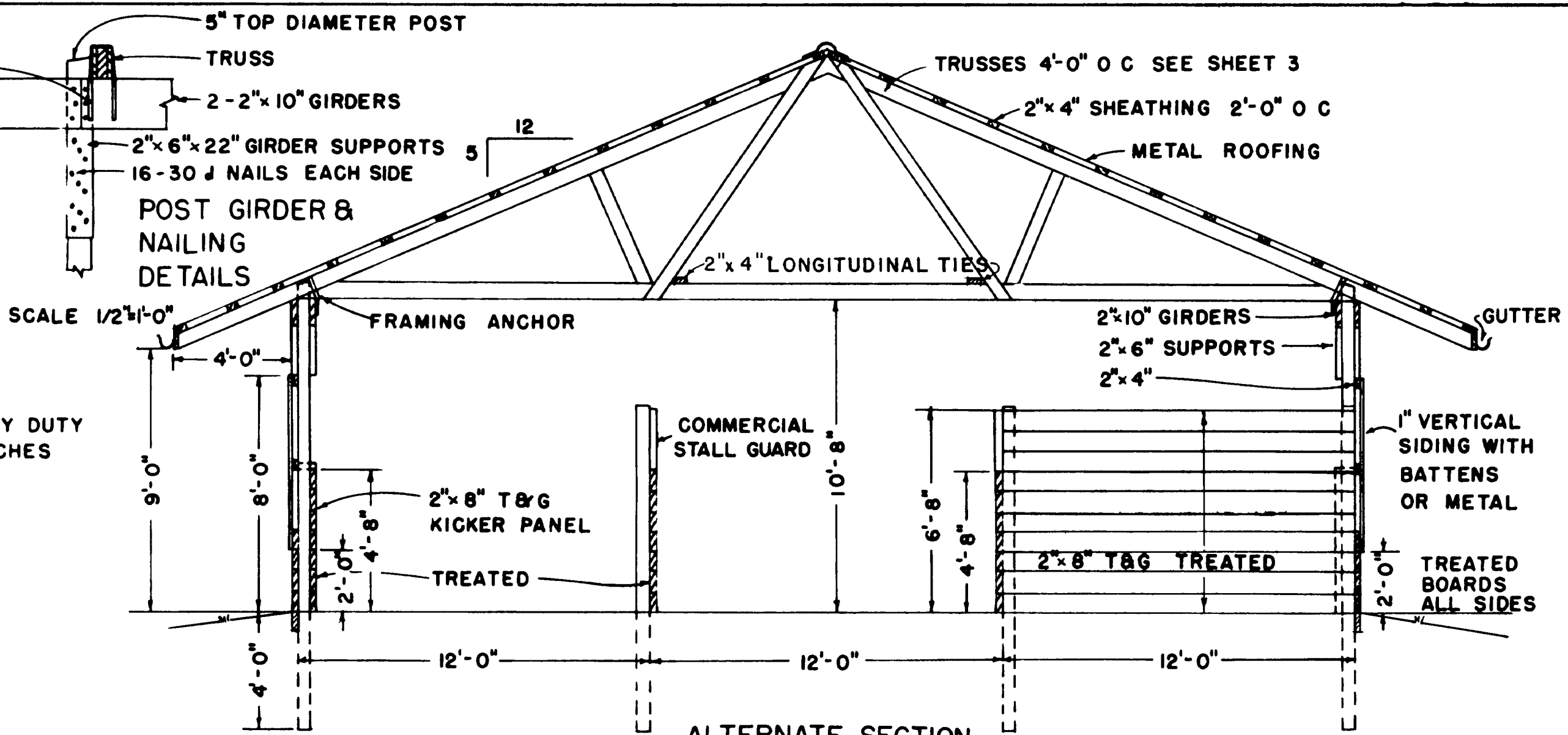
These plans do not claim to represent the most current technology or the most recent construction techniques, standards, or codes. For example, over the years there have been changes in the National Design Specifications for Wood Construction, changes in the strengths and types of building materials, and changes in fasteners, among other things. Those changes, along with variations in climate, building codes, and other factors, make it imperative that professional services be utilized for your specific project. Suggested services include, but are not limited to, structural design, assurance of compliance with codes and regulations, site selection, construction supervision, and provision for utilities, waste management, and access. *These plans do not replace the need for competent design assistance in developing safe, legal, and well-functioning agricultural buildings and systems.*

**Neither the University of Kentucky, the Midwest Plan Service, the United States Department of Agriculture, nor any of the cooperating Land Grant universities, warranty these plans. They are for conceptual use only and are not for use as construction plans.**



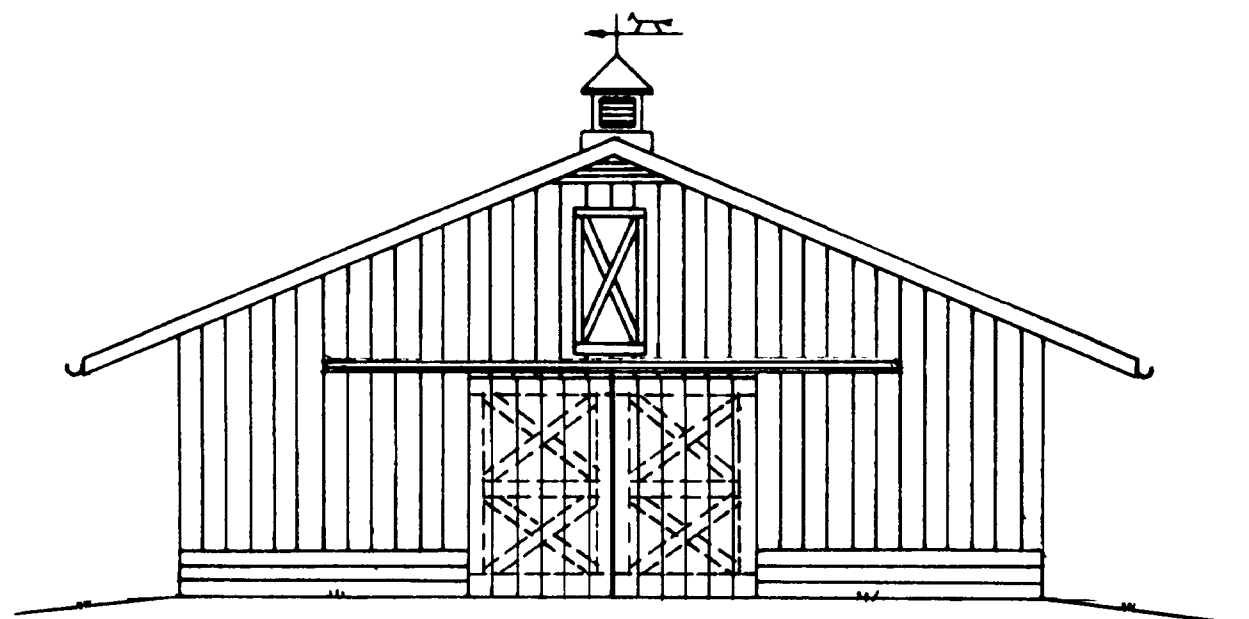
STALL DOOR DETAILS

SCALE 1/2"=1'-0"



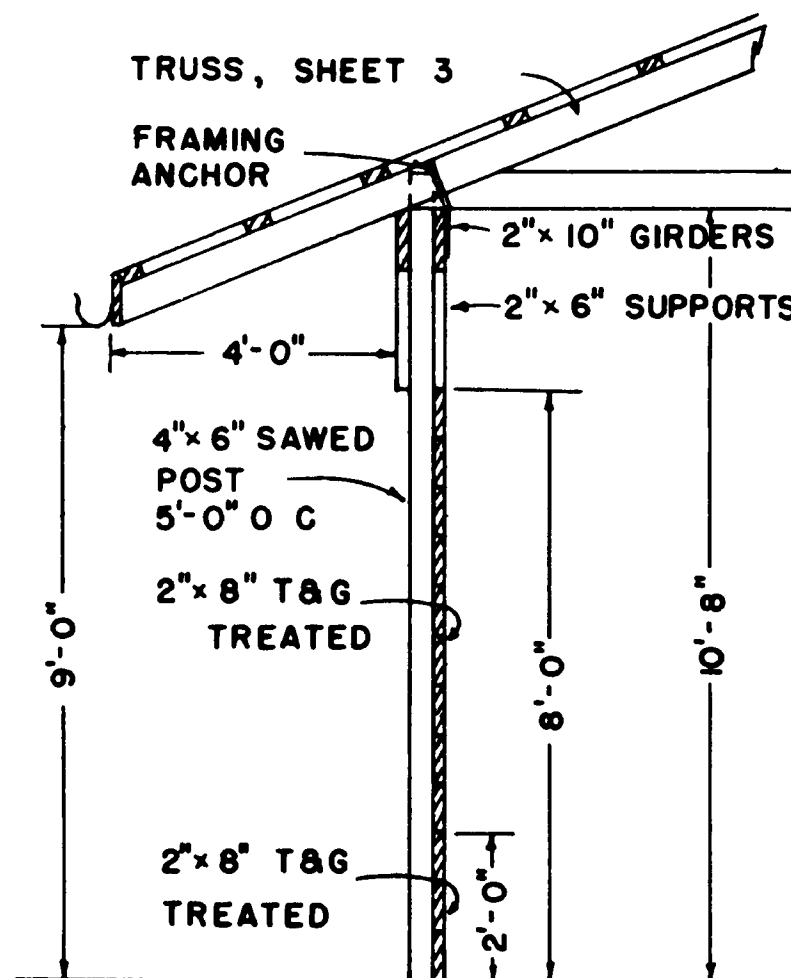
ALTERNATE SECTION A - A

SCALE 1/4"=1'-0"



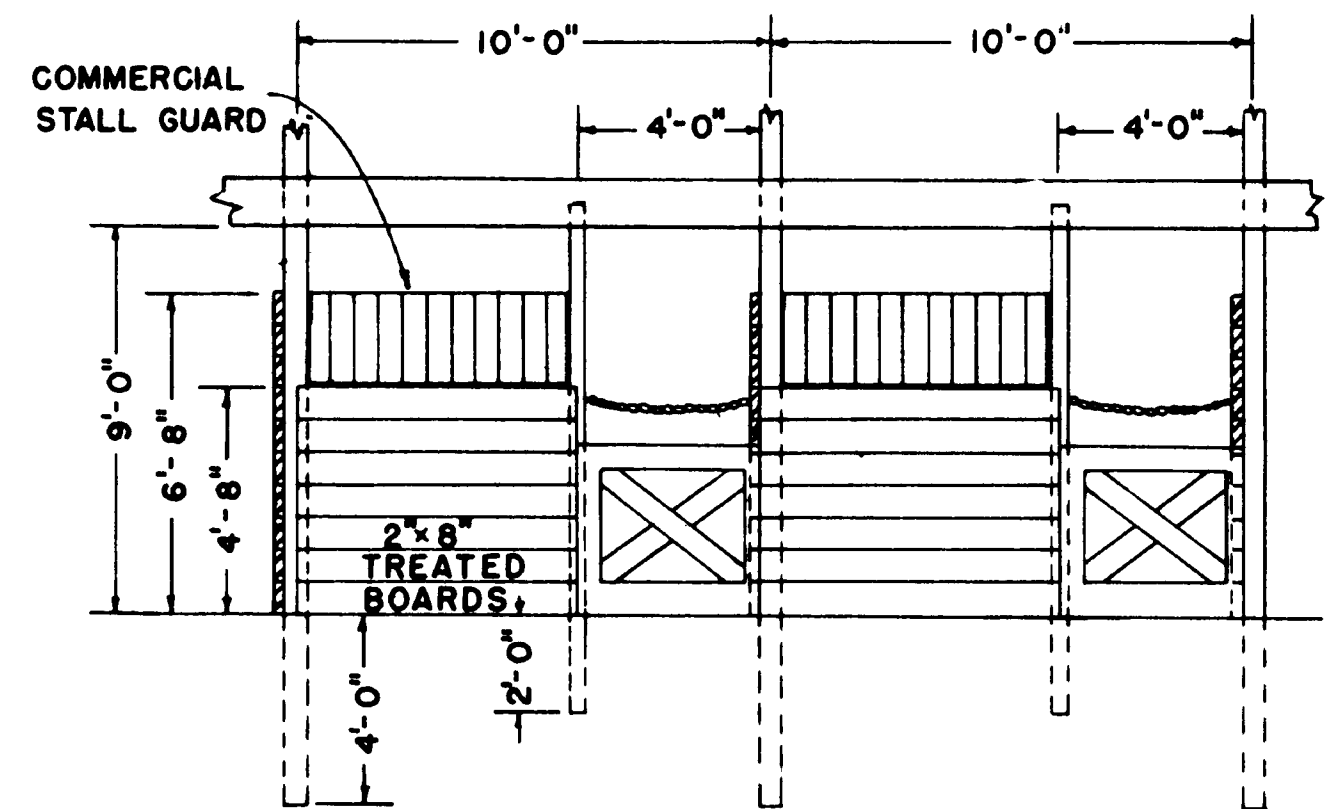
END ELEVATION

SCALE 1/8"=1'-0"



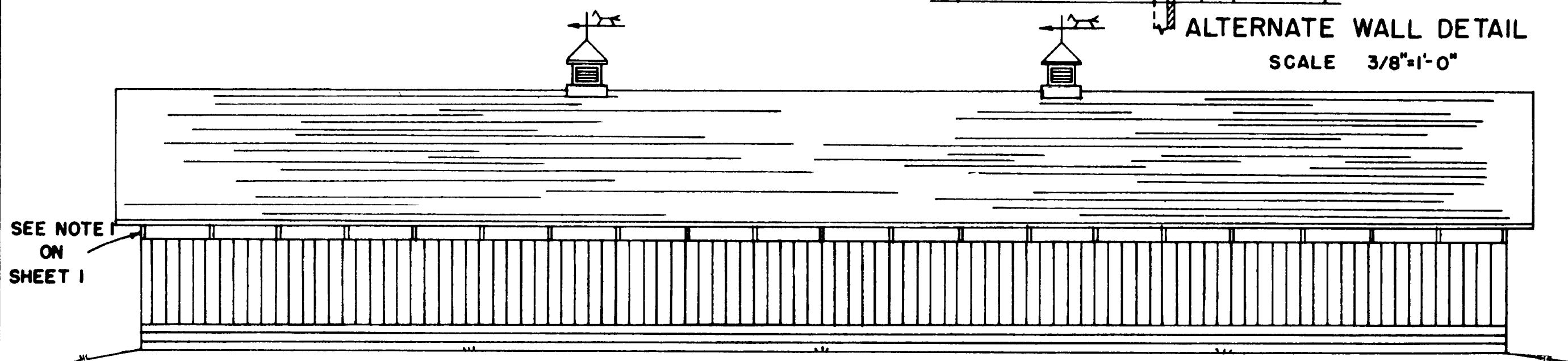
ALTERNATE WALL DETAIL

SCALE 3/8"=1'-0"



ELEVATION A STALL DETAIL

SCALE 1/4"=1'-0"



SIDE ELEVATION

SCALE 1/8"=1'-0"

SEE NOTE ON SHEET 1

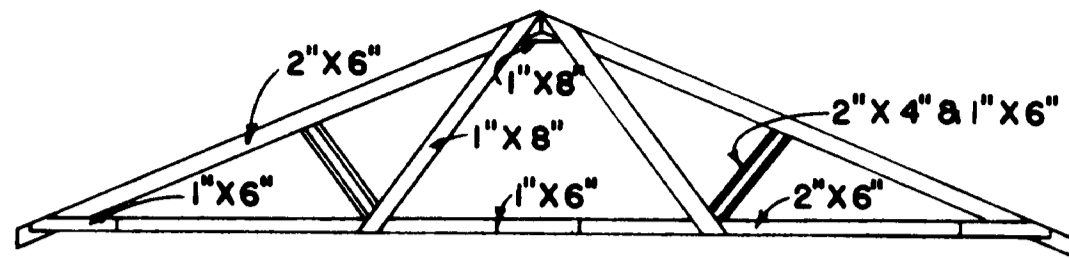
COOPERATIVE EXTENSION WORK IN  
 AGRICULTURE AND HOME ECONOMICS  
 DEPARTMENT OF AGRICULTURAL ENGINEERING  
 COLLEGE OF AGRICULTURE  
 UNIVERSITY OF KENTUCKY  
 UNITED STATES DEPARTMENT OF AGRICULTURE COOPERATING

HORSE BARN-17STALL

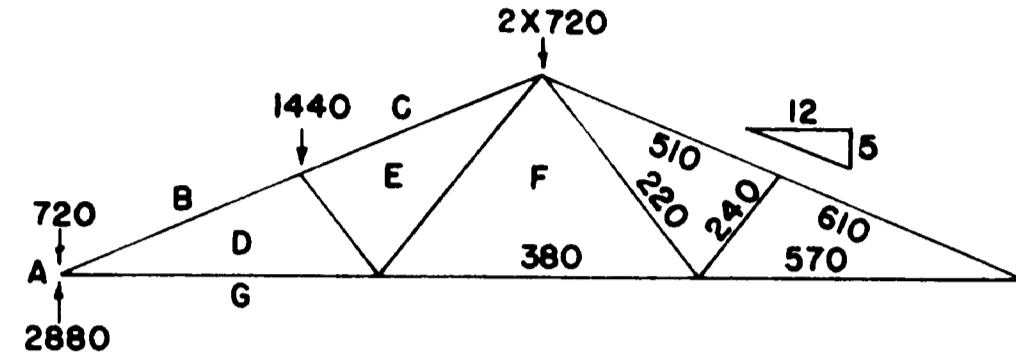
VA. '67 EX 6011 SHEET 2 OF 3

REVIEWED

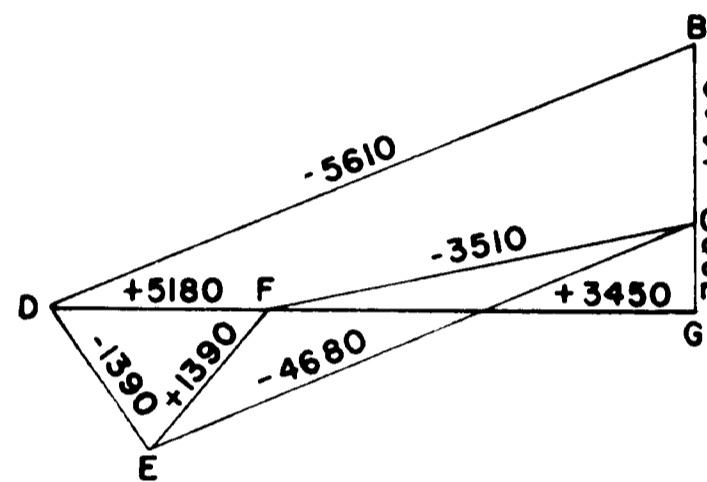
# 36-FT SPAN, 5 IN 12 PITCH, NAILED TRUSSED RAFTER (NO CEILING) SPACED 4 FT. ON CENTER



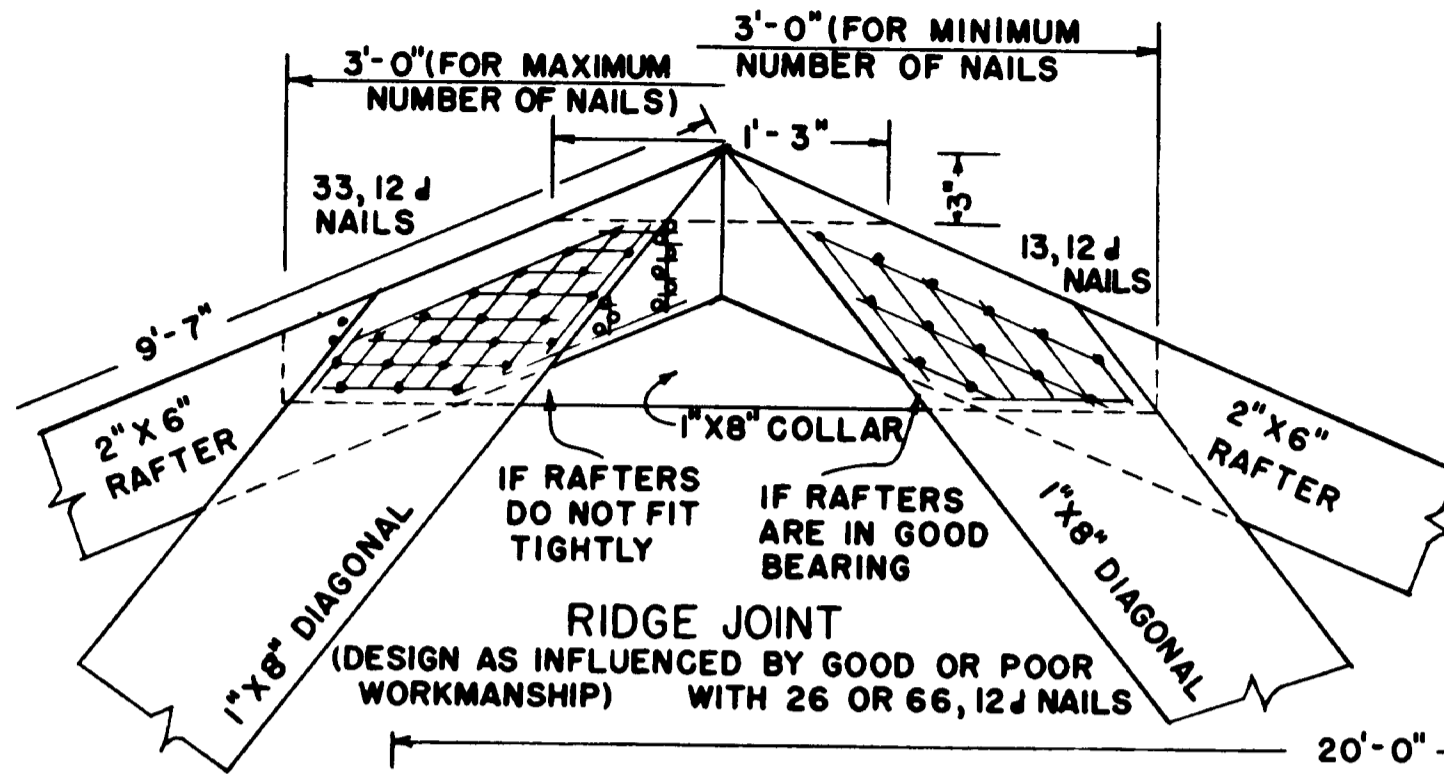
VIEW OF FRONT OF ASSEMBLY



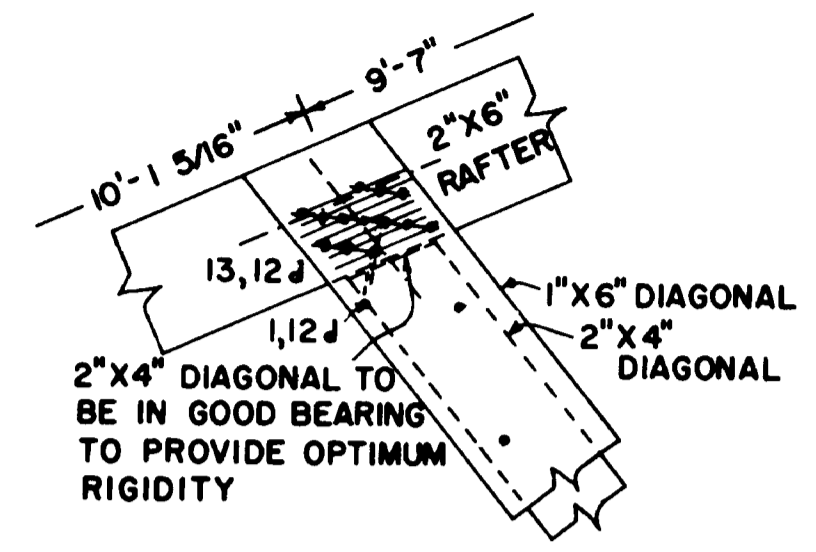
LOAD AND STRESS DIAGRAMS



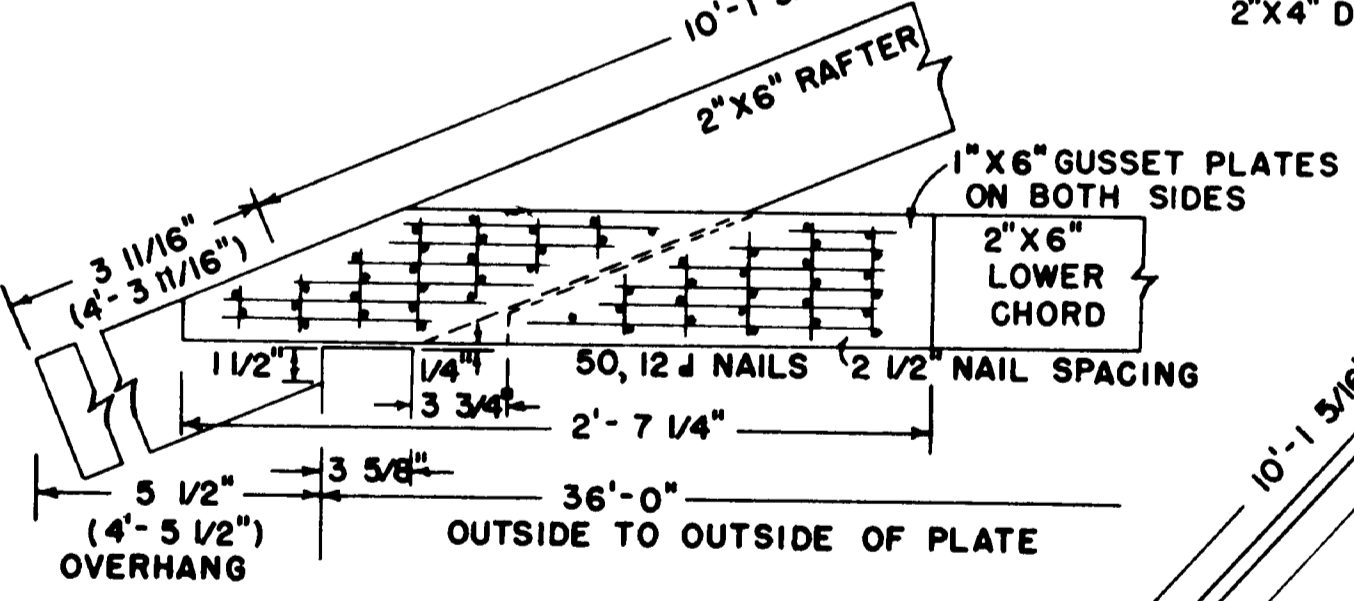
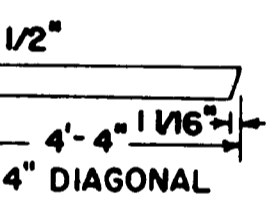
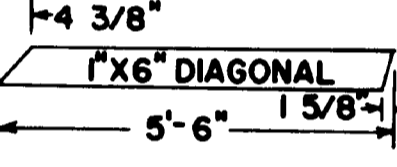
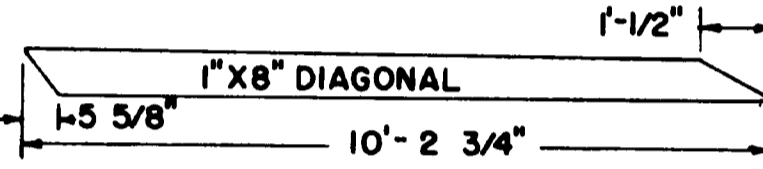
DEAD LOAD & LIVE LOAD ON ROOF: 40 LB/SQ FT  
 TRUSSED RAFTERS SPACED 4'-0" O C  
 LUMBER N#1 SOUTHERN PINE OR DOUGLAS FIR  
 C=135 PSI COMPRESSION PARALLEL TO GRAIN  
 F=1500 PSI MODULUS OF RUPTURE  
 E=1,760,000 PSI MODULUS OF ELASTICITY  
 CAMBER 5/8" AT CENTER SPLICE



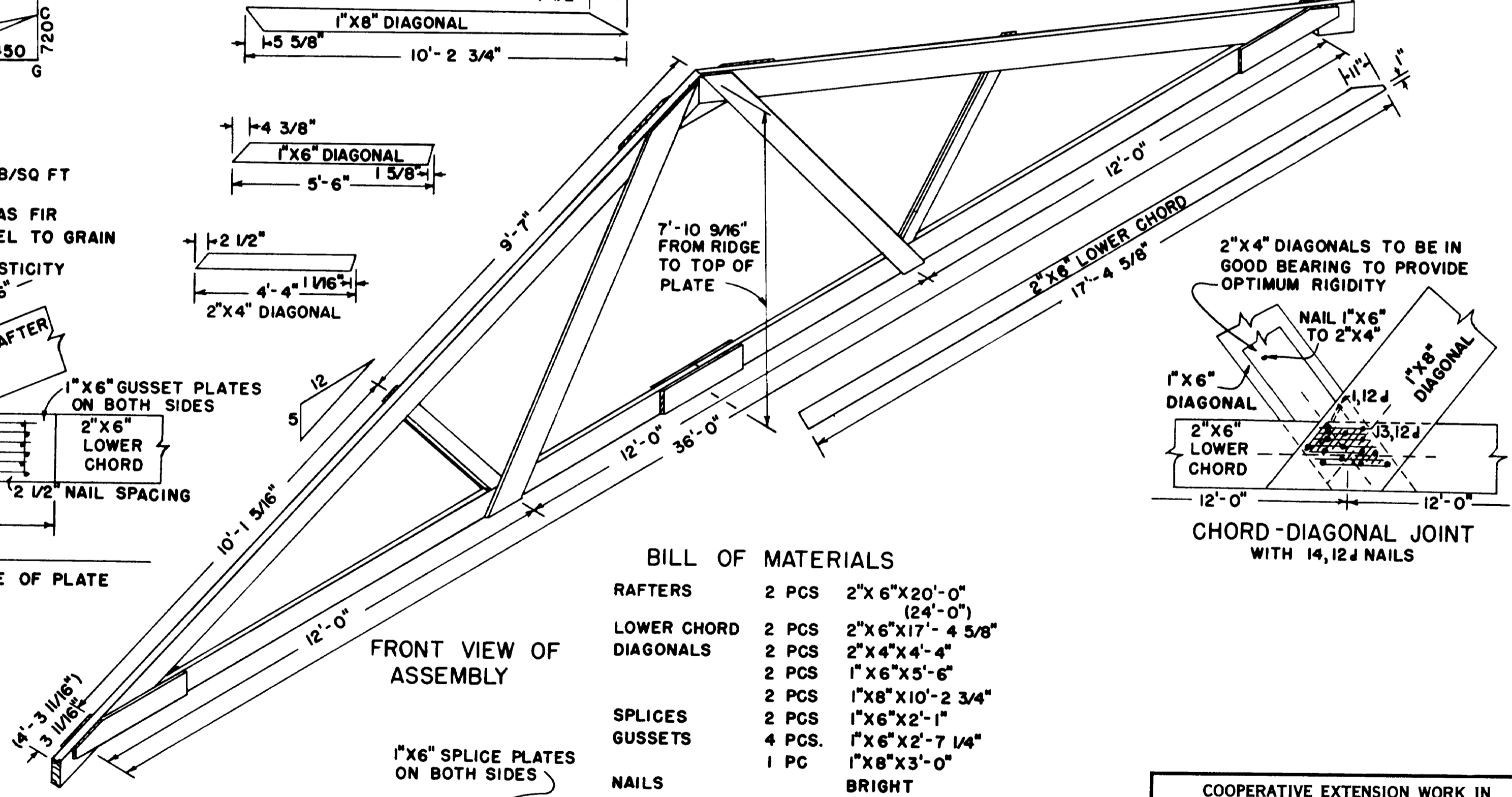
RIDGE JOINT  
 (DESIGN AS INFLUENCED BY GOOD OR POOR WORKMANSHIP) WITH 26 OR 66, 12 d NAILS



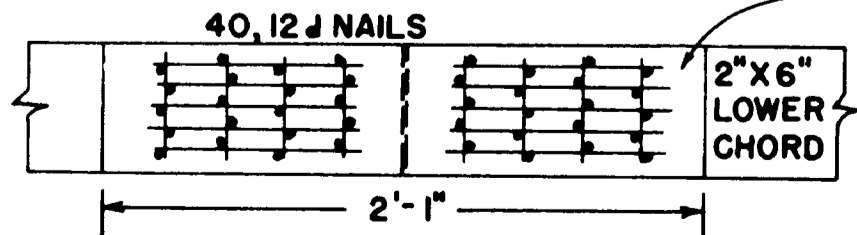
RAFTER-DIAGONAL JOINT WITH 14, 12 d NAILS



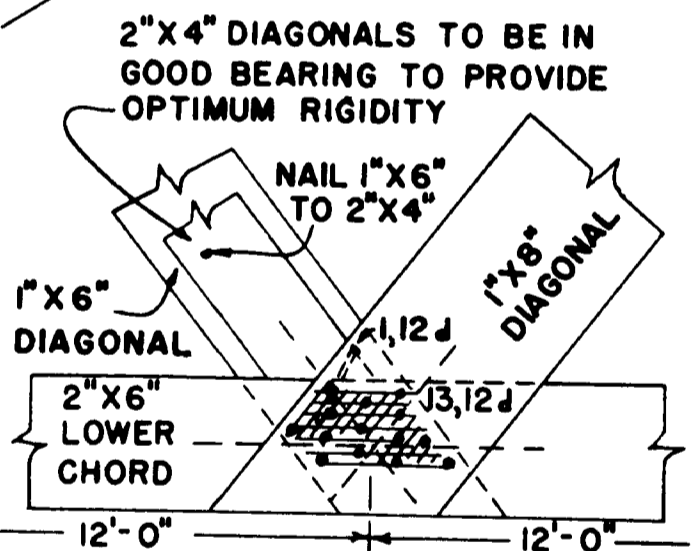
HEEL JOINT WITH 50, 12 d NAILS



FRONT VIEW OF ASSEMBLY



CENTER-SPLICE JOINT WITH 40, 12 d NAILS



CHORD-DIAGONAL JOINT WITH 14, 12 d NAILS

## BILL OF MATERIALS

RAFTERS	2 PCS	2"X6"X20'-0" (24'-0")
LOWER CHORD	2 PCS	2"X6"X17'-4 5/8"
DIAGONALS	2 PCS	2"X4"X4'-4"
	2 PCS	1"X6"X5'-6"
	2 PCS	1"X8"X10'-2 3/4"
SPLICES	2 PCS	1"X6"X2'-1"
GUSSETS	4 PCS	1"X6"X2'-7 1/4"
	1 PC	1"X8"X3'-0"
NAILS	230-270 PCS	12 d BRIGHT 3 1/4"X0.148" (44 LBS)
OR		
NAILS	230-270 PCS	12 d HARDENED 3 1/4"X0.135" (37 LBS)

NOTES.  
 USE HELICALLY THREADED NAILS FOR PERMANENTLY TIGHT JOINTS THROUGHOUT STRUCTURE  
 USE HARDENED NAILS IN DRY SOUTHERN PINE  
 DRIVE ALL NAILS FROM FRONT EXCEPT THOSE SHOWN AS (O)  
 USE TEMPLATES FOR LOCATING ALL NAILS TO ASSURE MAXIMUM EFFICIENCY AND EFFECTIVENESS

COOPERATIVE EXTENSION WORK IN AGRICULTURE AND HOME ECONOMICS  
 DEPARTMENT OF AGRICULTURAL ENGINEERING  
 COLLEGE OF AGRICULTURE  
 UNIVERSITY OF KENTUCKY  
 AND  
 UNITED STATES DEPARTMENT OF AGRICULTURE COOPERATING

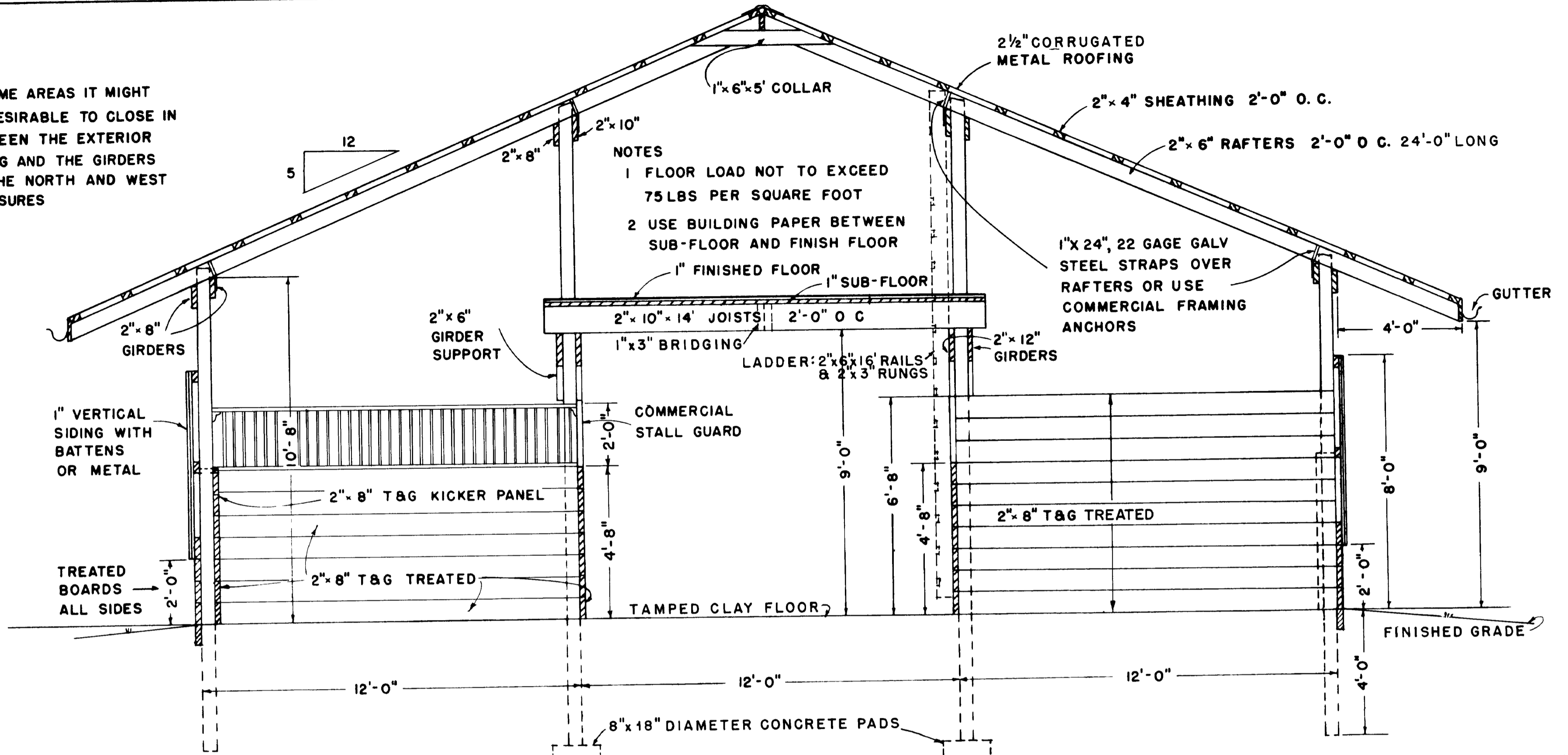
**HORSE BARN-17 STALL**

VA. '67 EX 6011 SHEET 3 OF 3

REVIEWED 1975

**NOTE 1**

IN SOME AREAS IT MIGHT BE DESIRABLE TO CLOSE IN BETWEEN THE EXTERIOR SIDING AND THE GIRDERS ON THE NORTH AND WEST EXPOSURES

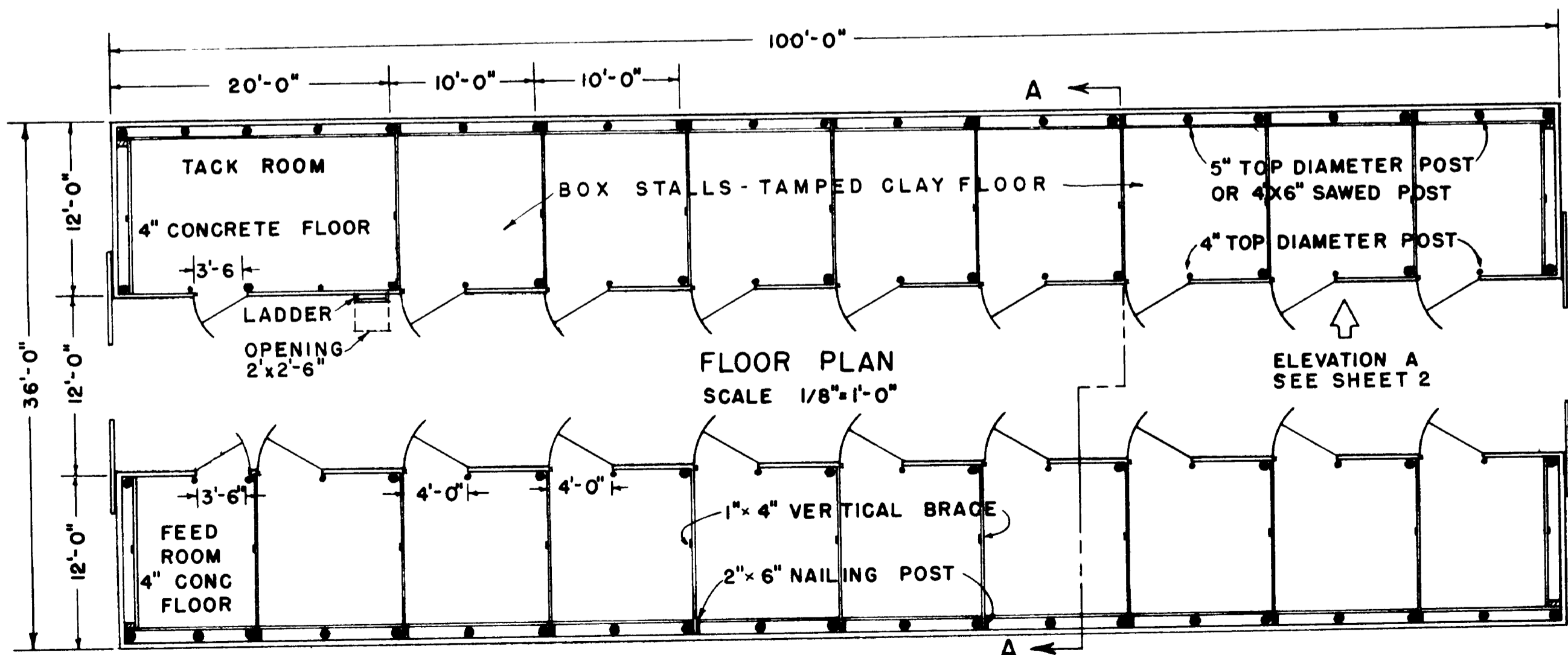


- NOTES**
- 1 FLOOR LOAD NOT TO EXCEED 75 LBS PER SQUARE FOOT
  - 2 USE BUILDING PAPER BETWEEN SUB-FLOOR AND FINISH FLOOR

**SECTION A-A**  
SCALE 3/8" = 1'-0"

NOTE. ALL POSTS TO BE PRESSURE-TREATED WITH PRESERVATIVE TO A RETENTION OF 8 POUNDS PER CUBIC FOOT.

LOCATE AND USE PROPER TYPE OF EQUIPMENT INSIDE OF STALLS TO PREVENT INJURY OF HORSES. PLACE FEED BOX AND WATERERS IN CORNERS.



**FLOOR PLAN**  
SCALE 1/8" = 1'-0"

**ELEVATION A**  
SEE SHEET 2

"THESE PLANS ARE FOR USE AS A CONSTRUCTION GUIDE IF A CONSTRUCTION CONTRACT IS TO BE MADE, WRITTEN SPECIFICATIONS ARE NEEDED."

COOPERATIVE EXTENSION WORK IN AGRICULTURE AND HOME ECONOMICS  
 DEPARTMENT OF AGRICULTURAL ENGINEERING  
 COLLEGE OF AGRICULTURE  
 UNIVERSITY OF KENTUCKY  
 UNITED STATES DEPARTMENT OF AGRICULTURE COOPERATING

**HORSE BARN-17 STALL**

VA. '67 EX 6011 SHEET 1 OF 3

REVIEWED 1972