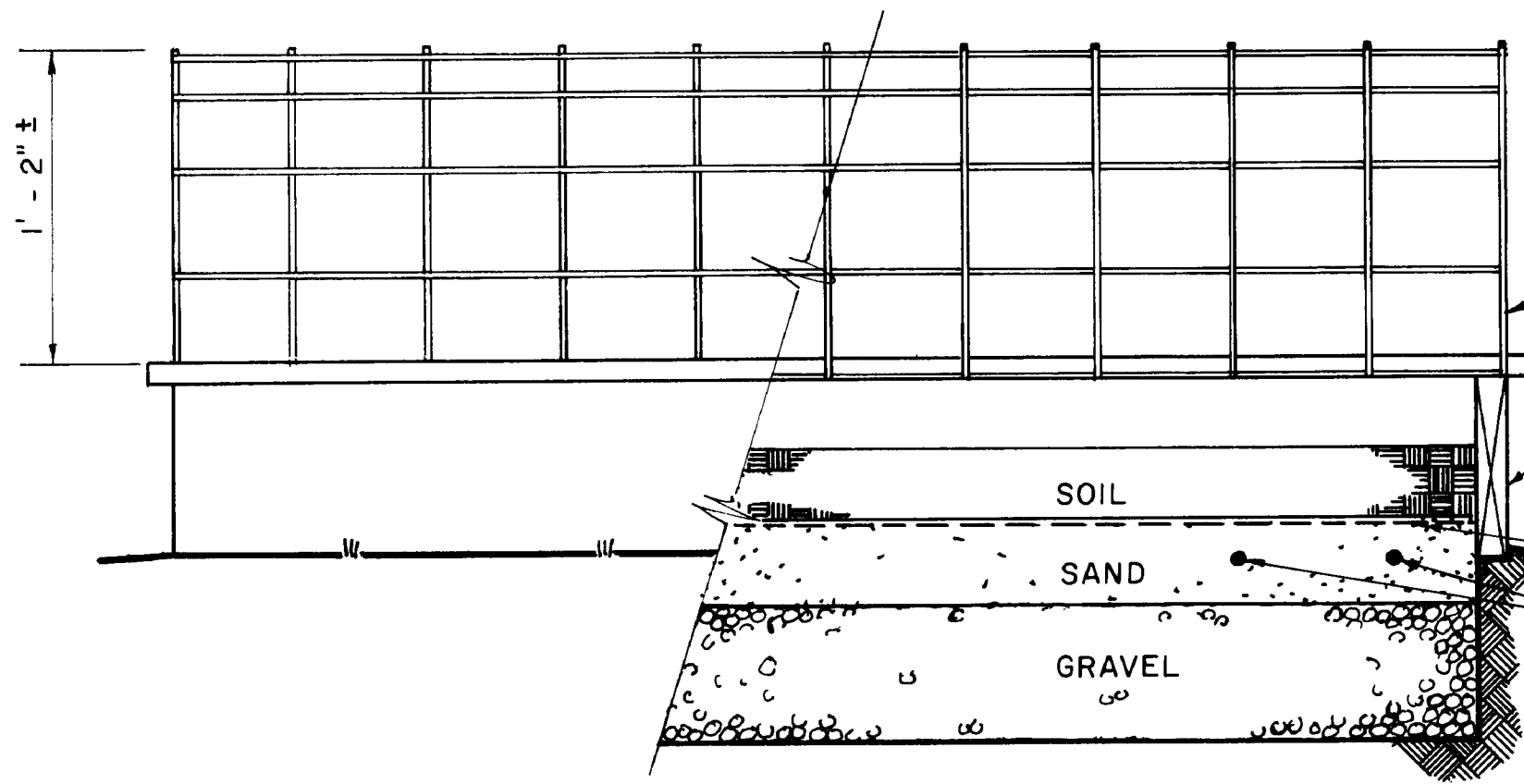


Important: Warranty Disclaimer for Plans

For the convenience of our clientele, this website makes available conceptual plans that can be helpful in planning buildings, facilities, or other structures. They were developed over many years by engineers at Land Grant universities through the former USDA Cooperative Farm Buildings Plan Exchange. *Regardless of the original intent, these are older plans that provide conceptual information only, and are not to be considered or used as construction plans.*

These plans do not claim to represent the most current technology or the most recent construction techniques, standards, or codes. For example, over the years there have been changes in the National Design Specifications for Wood Construction, changes in the strengths and types of building materials, and changes in fasteners, among other things. Those changes, along with variations in climate, building codes, and other factors, make it imperative that professional services be utilized for your specific project. Suggested services include, but are not limited to, structural design, assurance of compliance with codes and regulations, site selection, construction supervision, and provision for utilities, waste management, and access. *These plans do not replace the need for competent design assistance in developing safe, legal, and well-functioning agricultural buildings and systems.*

Neither the University of Kentucky, the Midwest Plan Service, the United States Department of Agriculture, nor any of the cooperating Land Grant universities, warranty these plans. They are for conceptual use only and are not for use as construction plans.



SIDE VIEW
CUT AWAY

4 MIL CLEAR PLASTIC FILM

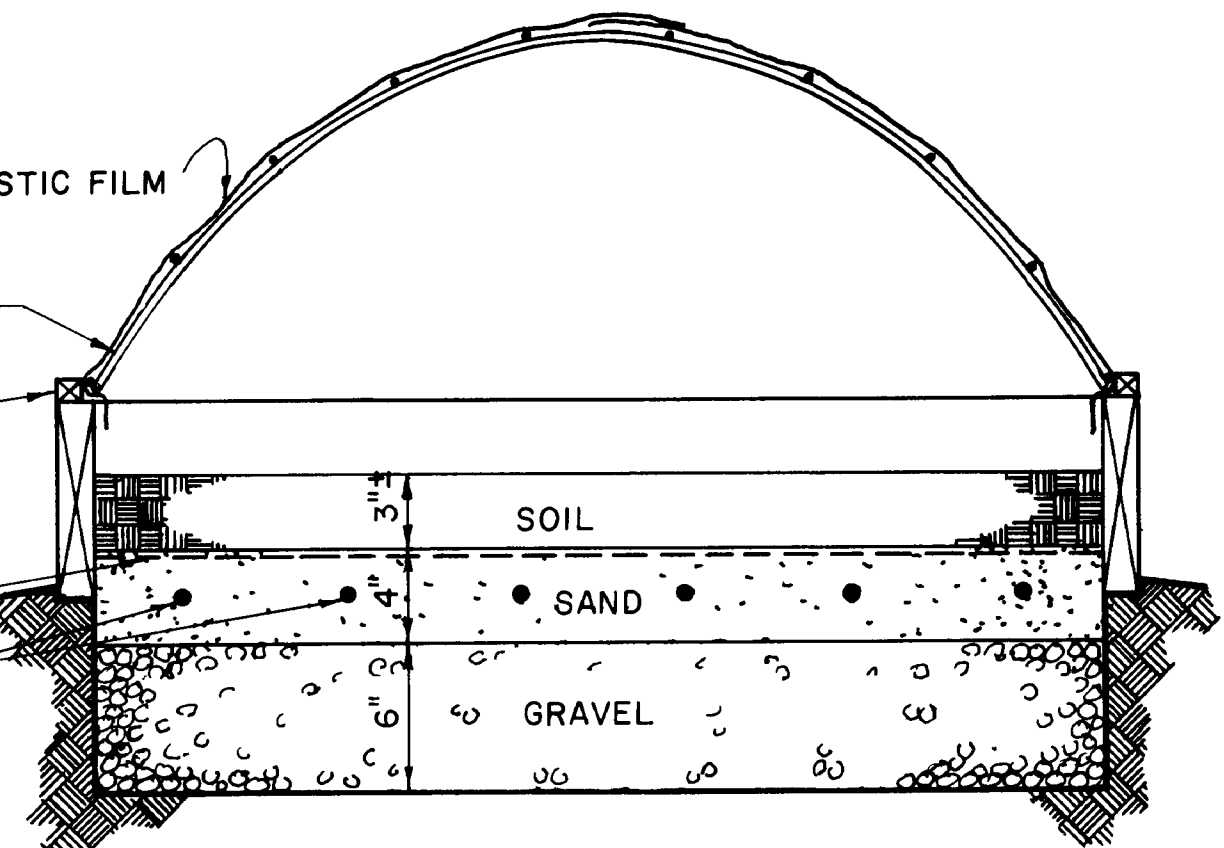
#8 GA WW MESH

1" x 1" WIRE STOP

2" x 8" BASE FRAME

HARDWARE CLOTH

HEATING CABLES



END VIEW
SECTION

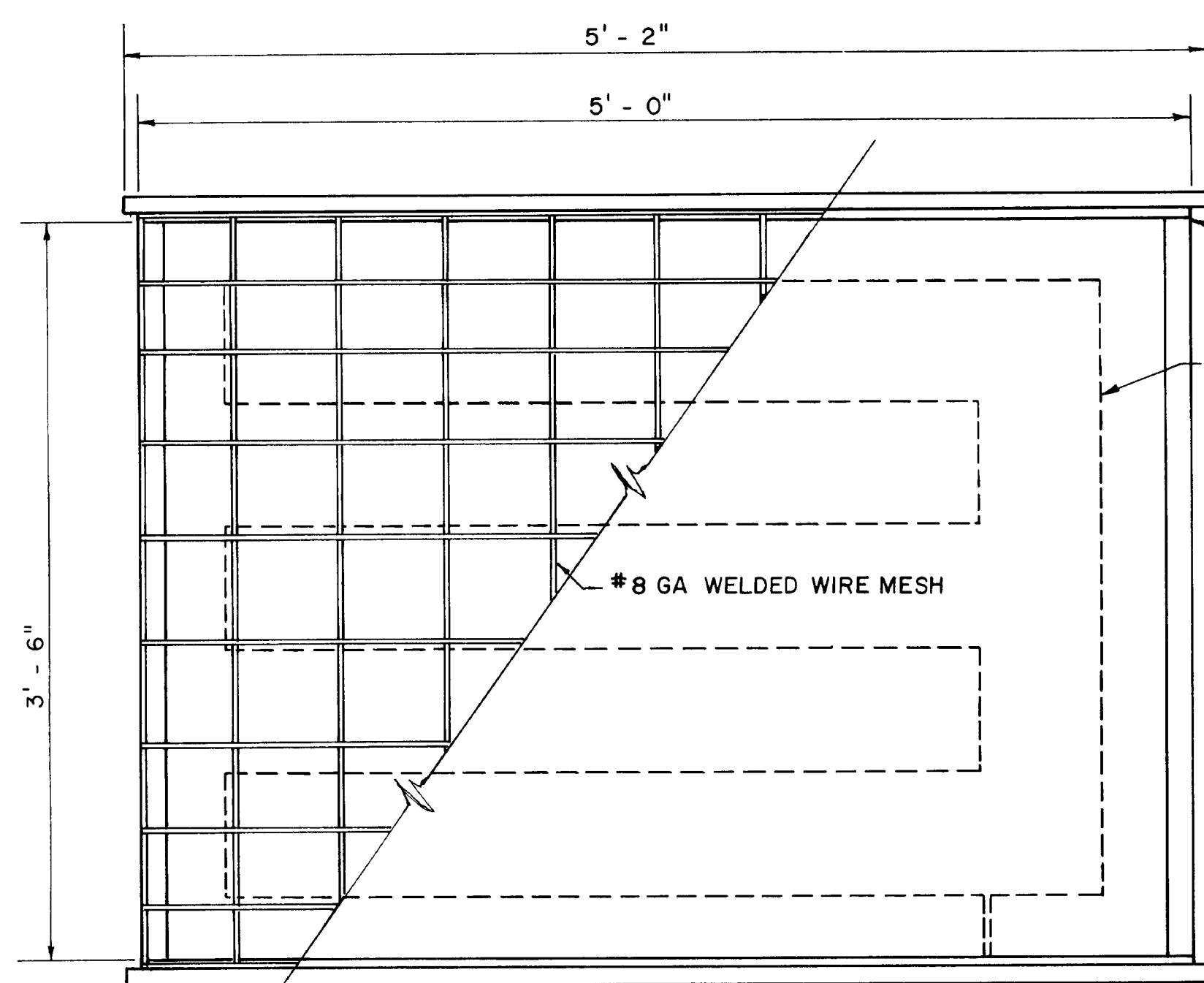
NOTE: SEPARATION OF HEATING CABLES IS VARIABLE TO AMOUNT OF HEAT NEEDED PER SQ FT ACCORDING TO GEOGRAPHIC LOCATION. REFER TO LEAFLET NO 445 USDA

ALL WOOD SHOULD BE TREATED WITH PRESERVATIVE AFTER CUTTING AND BEFORE ASSEMBLY.

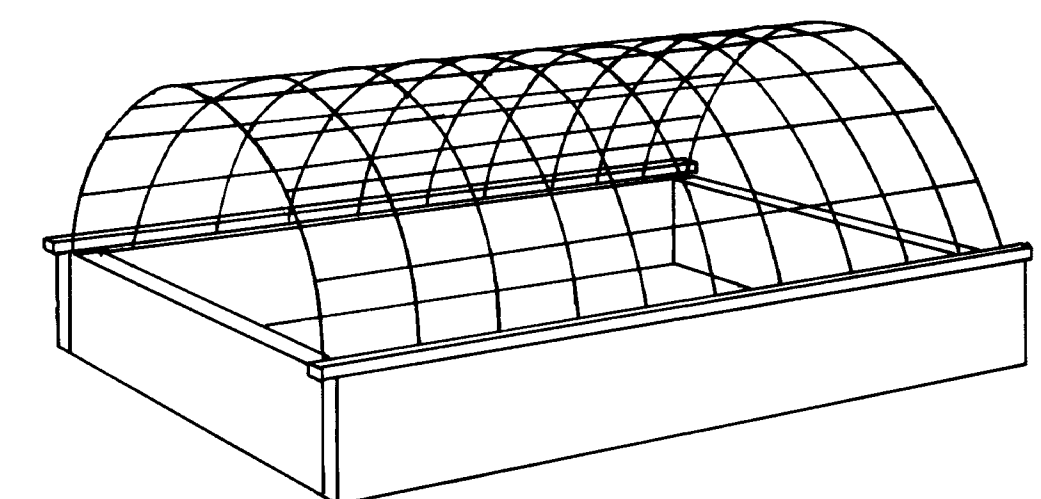
METAL PARTS AND FASTENINGS TO BE GALVANIZED OR OTHERWISE RESISTANT TO CORROSION.

WOOD PARTS MAY BE FASTENED WITH SCREWS OR WITH NAILS.

PLASTIC MAY BE FASTENED BY CLOTHES PINS OR BY PLASTIC WEBBING



TOP VIEW
CUT AWAY



PERSPECTIVE VIEW
NOT TO SCALE

MATERIAL LIST

- 2 PCS 2" x 8" - 5' LONG FOR SIDES
- 2 PCS 2" x 8" - 3' - 6" LONG FOR ENDS
- 2 PCS 1" x 1" WIRE STOP - 5' - 2" LONG FOR SIDES
- 1 PC NO 8 GAUGE 6"x6" WELDED WIRE, 5' LONG
- 4' - 6" WIDE FOR TOP OF WOOD FRAME TO SUPPORT PLASTIC FILM
- 3 PCS PLASTIC WEBBING 2" WIDE - 5' LONG
- 2 PCS PLASTIC FILM, 4 MIL, CLEAR 3' WIDE
- 7' LONG
- 1 360-WATT SOIL HEATING CABLE, THERMOSTATICALLY CONTROLLED TO SHUT OFF AT 70°F
- 1 PC WHITE PLASTIC FILM, 4 MIL, 5'x8' FOR COVERING FRAME DURING WINTER
- 2 PCS CHEESE CLOTH, 3'x7'
- 4 IN SAND - 2" ABOVE, 2" BELOW HEATING CABLE
- 1 PC 1/2" HARDWARE CLOTH, 5' x 3 1/2'

THESE PLANS ARE FOR USE AS A CONSTRUCTION GUIDE IF A CONSTRUCTION CONTRACT IS TO BE MADE, WRITTEN SPECIFICATIONS ARE NEEDED"

SCALE 1 1/2" = 1'-0" UNLESS OTHERWISE NOTED

COOPERATIVE EXTENSION WORK IN AGRICULTURE AND HOME ECONOMICS
 OFFICE OF AGRICULTURE
UNIVERSITY OF KENTUCKY
 AND
 UNITED STATES DEPARTMENT OF AGRICULTURE COOPERATING

MINI-HOTBED AND PROPAGATING FRAME

USDA '69	6080	SHEET 1 OF 1
----------	------	--------------

REVISED 1972

DESIGNED IN COOPERATION WITH CROPS RESEARCH DIVISION