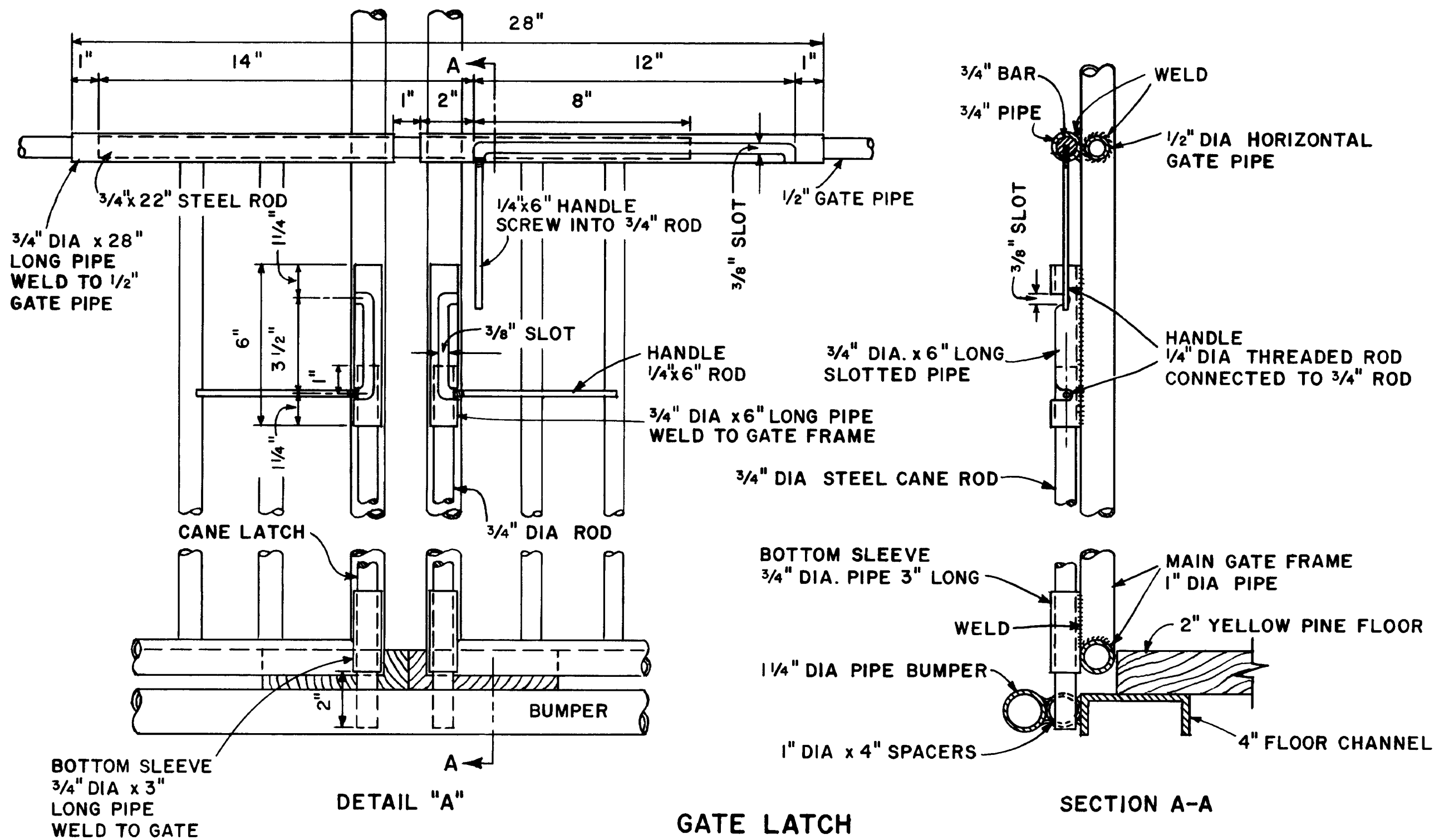


Important: Warranty Disclaimer for Plans

For the convenience of our clientele, this website makes available conceptual plans that can be helpful in planning buildings, facilities, or other structures. They were developed over many years by engineers at Land Grant universities through the former USDA Cooperative Farm Buildings Plan Exchange. *Regardless of the original intent, these are older plans that provide conceptual information only, and are not to be considered or used as construction plans.*

These plans do not claim to represent the most current technology or the most recent construction techniques, standards, or codes. For example, over the years there have been changes in the National Design Specifications for Wood Construction, changes in the strengths and types of building materials, and changes in fasteners, among other things. Those changes, along with variations in climate, building codes, and other factors, make it imperative that professional services be utilized for your specific project. Suggested services include, but are not limited to, structural design, assurance of compliance with codes and regulations, site selection, construction supervision, and provision for utilities, waste management, and access. *These plans do not replace the need for competent design assistance in developing safe, legal, and well-functioning agricultural buildings and systems.*

Neither the University of Kentucky, the Midwest Plan Service, the United States Department of Agriculture, nor any of the cooperating Land Grant universities, warranty these plans. They are for conceptual use only and are not for use as construction plans.



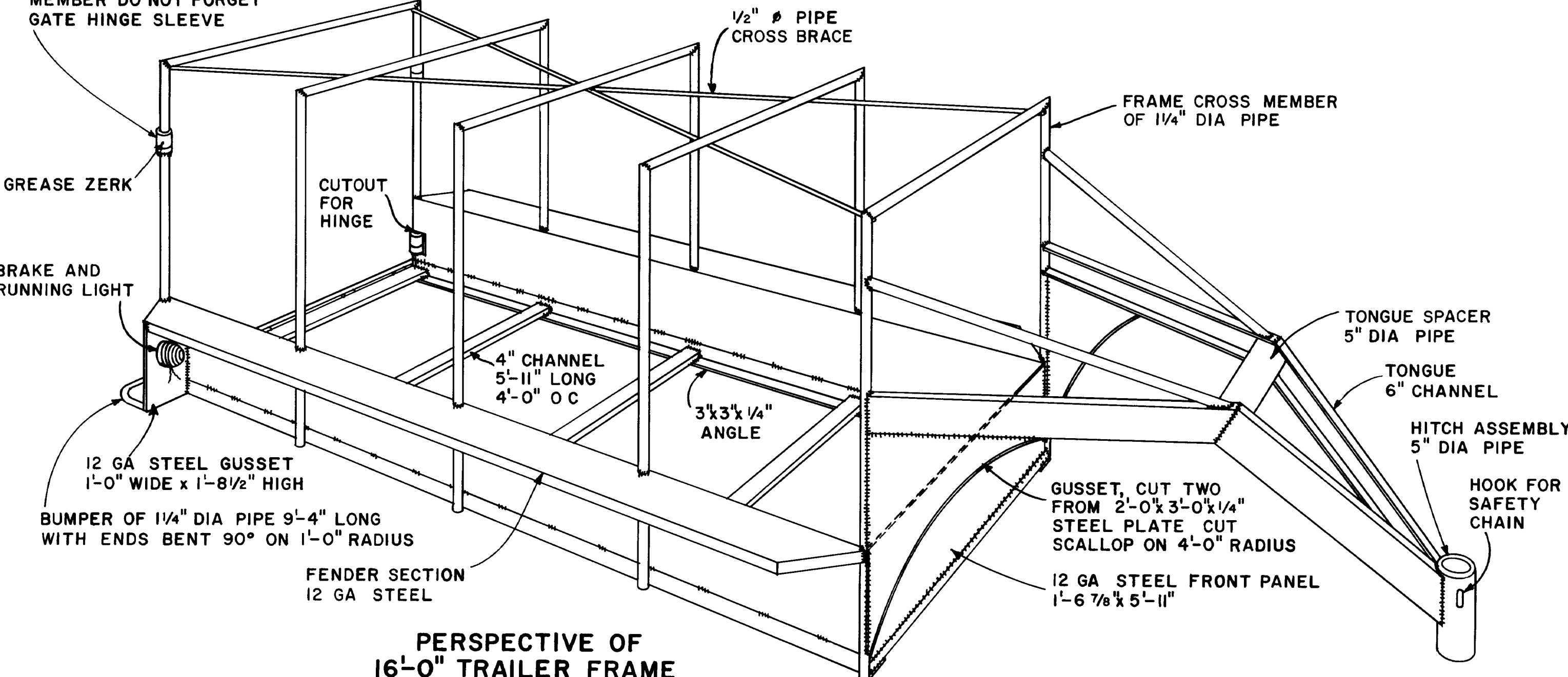
NOTE #1
 CHECK YOUR PICKUP OR TRUCK FOR THE DISTANCE BETWEEN OUTSIDE REAR BUMPER OR CORNER OF BED TO POINT OVER AXLE IN CENTER OF BED. MAKE THE DISTANCE BETWEEN HITCH AND TRAILER 2'-0" LONGER THAN YOUR MEASUREMENT. TO EXTEND INCREASE LENGTH OF THE DOWNWARD ANGLED 6" CHANNELS

NOTE #2
 THE CARRIAGE ASSEMBLY OF YOUR CHOICE MAY BE USED IN TANDEM
 1 STRAIGHT AXLE AND NO SPRINGS
 2 STRAIGHT AXLE AND LEAF SPRINGS
 3 FOR HIGHWAY USE MAINLY, A DROP AXLE MAY BE USED

NOTE #3
 CAUTION. THE EXPECTED MAXIMUM LOAD WILL APPROACH 7 TONS. THEREFORE, SPECIFY EACH AXLE AND WHEEL ASSEMBLY TO CARRY 3 1/2 TONS HIGHWAY AND NON HIGHWAY USE, WHEN ORDERING FROM CARRIAGE MANUFACTURER TIRES SHOULD BE 8 PLY AND MATCHED TO AXLE AND USE
 THIS DESIGN HEIGHT IS FOR CATTLE, IF HORSES ARE TO BE HAULED FREQUENTLY RAISE HEIGHT 6"

GATE LATCH
 SCALE. 3"=1'-0"

NOTE
 WHEN SETTING REAR CROSS MEMBER DO NOT FORGET GATE HINGE SLEEVE



PERSPECTIVE OF 16'-0" TRAILER FRAME

COOPERATIVE EXTENSION WORK IN AGRICULTURE AND HOME ECONOMICS
 UNIVERSITY OF KANSAS
 AND
 UNITED STATES DEPARTMENT OF AGRICULTURE COOPERATING

TRAILER FOR CATTLE GOOSENECK TYPE

TEXAS '72	6141	SHEET 2 OF 2
-----------	------	--------------

