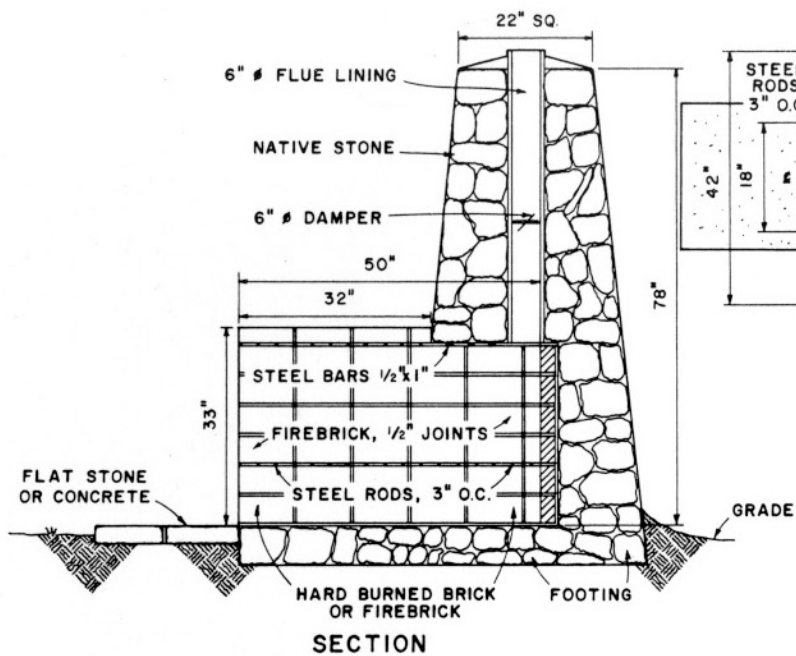


Important: Warranty Disclaimer for Plans

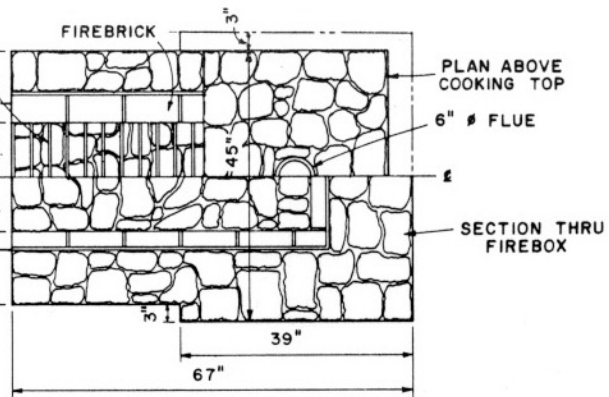
For the convenience of our clientele, this website makes available conceptual plans that can be helpful in planning buildings, facilities, or other structures. They were developed over many years by engineers at Land Grant universities through the former USDA Cooperative Farm Buildings Plan Exchange. *Regardless of the original intent, these are older plans that provide conceptual information only, and are not to be considered or used as construction plans.*

These plans do not claim to represent the most current technology or the most recent construction techniques, standards, or codes. For example, over the years there have been changes in the National Design Specifications for Wood Construction, changes in the strengths and types of building materials, and changes in fasteners, among other things. Those changes, along with variations in climate, building codes, and other factors, make it imperative that professional services be utilized for your specific project. Suggested services include, but are not limited to, structural design, assurance of compliance with codes and regulations, site selection, construction supervision, and provision for utilities, waste management, and access. *These plans do not replace the need for competent design assistance in developing safe, legal, and well-functioning agricultural buildings and systems.*

Neither the University of Kentucky, the Midwest Plan Service, the United States Department of Agriculture, nor any of the cooperating Land Grant universities, warranty these plans. They are for conceptual use only and are not for use as construction plans.



SECTION

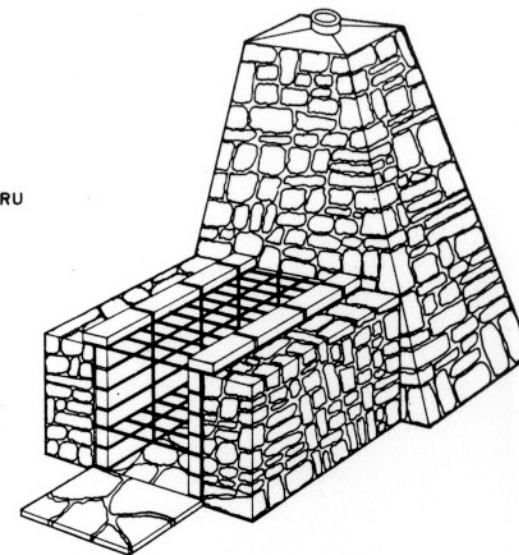


PLAN

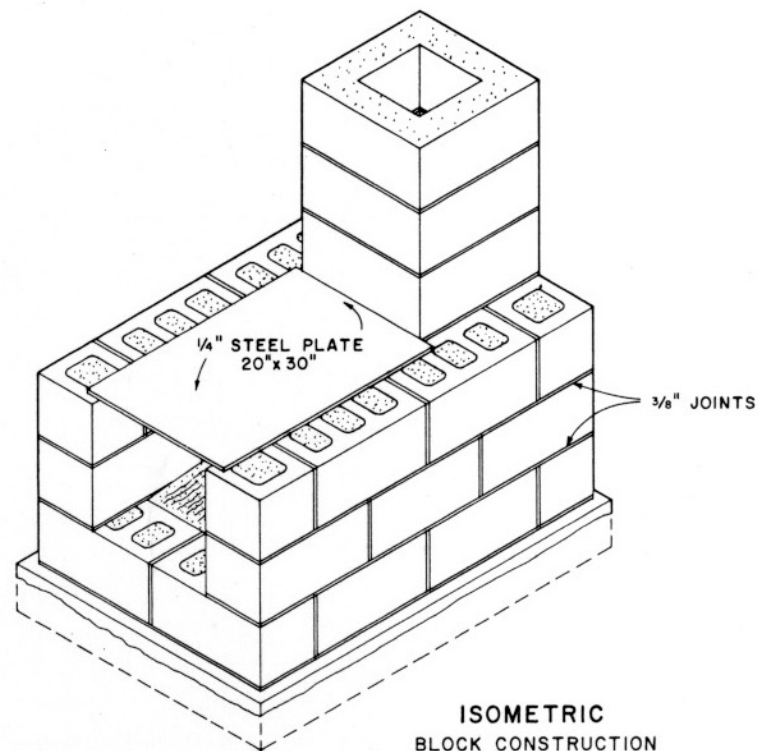
BILL OF MATERIALS

STONE CONSTRUCTION

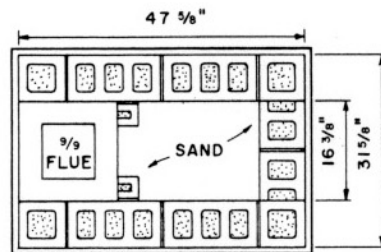
- 50 CU. FT. NATIVE STONE
- MORTAR: 1:3 MIX
- 5 BAGS CEMENT
- 11 CU. FT. SAND
- 98 FIREBRICK
- 3 STEEL BARS 1/2"x1"x22"
- 28 STEEL RODS 1/2" # x 22"
- 1 FLUE LINING OR TILE 6" # x 50"
- 1 DAMPER 6" #



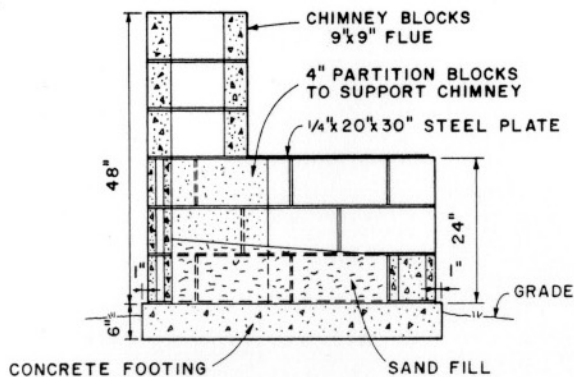
PERSPECTIVE



ISOMETRIC
BLOCK CONSTRUCTION



PLAN
STEEL PLATE NOT SHOWN



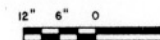
SECTION

BILL OF MATERIALS

CONCRETE BLOCK CONSTRUCTION

- 16 REGULAR BLOCKS 8"x8"x16"
- 6 HALF BLOCKS 8"x8"x8"
- 9 PARTITION BLOCKS 4"x8"x16"
- 3 CHIMNEY BLOCKS (9"x9" OPENING 17"x8"x17")
- 1 STEEL PLATE 1/4"x20"x30"
- MORTAR:
- 1 96 LB. SACK PORTLAND CEMENT
- 100 LB. HYDRATED LIME
- 300 LB. MASON SAND
- CONCRETE BASE:
- 2 96 LB. SACKS OF PORTLAND CEMENT
- 400 LB. SAND
- 500 LB. GRAVEL OR STONE

BASED ON: OREGON, VIRGINIA AND NATIONAL
PARK SERVICE PLANS.

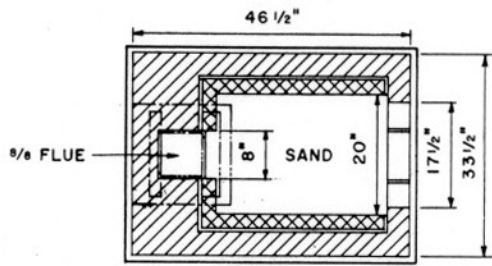


COOPERATIVE EXTENSION WORK IN
AGRICULTURE AND HOME ECONOMICS

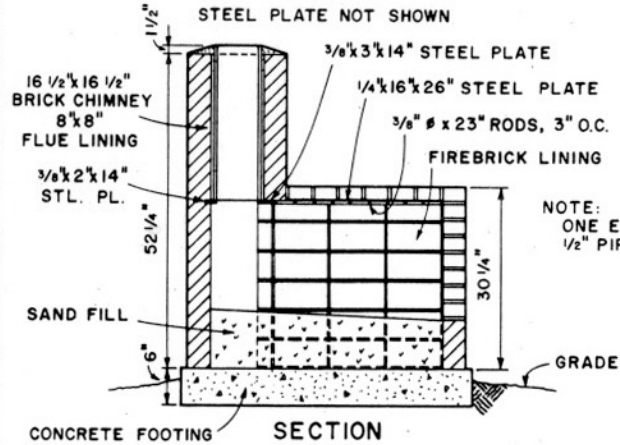
AND
UNITED STATES DEPARTMENT OF AGRICULTURE COOPERATING

OUTDOOR FIREPLACES

USDA '76 6261 SHEET 1 OF 2



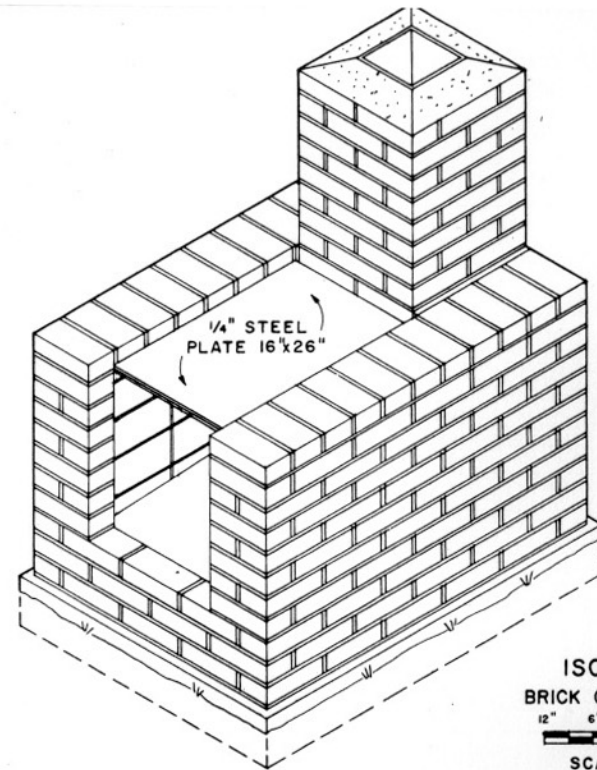
PLAN



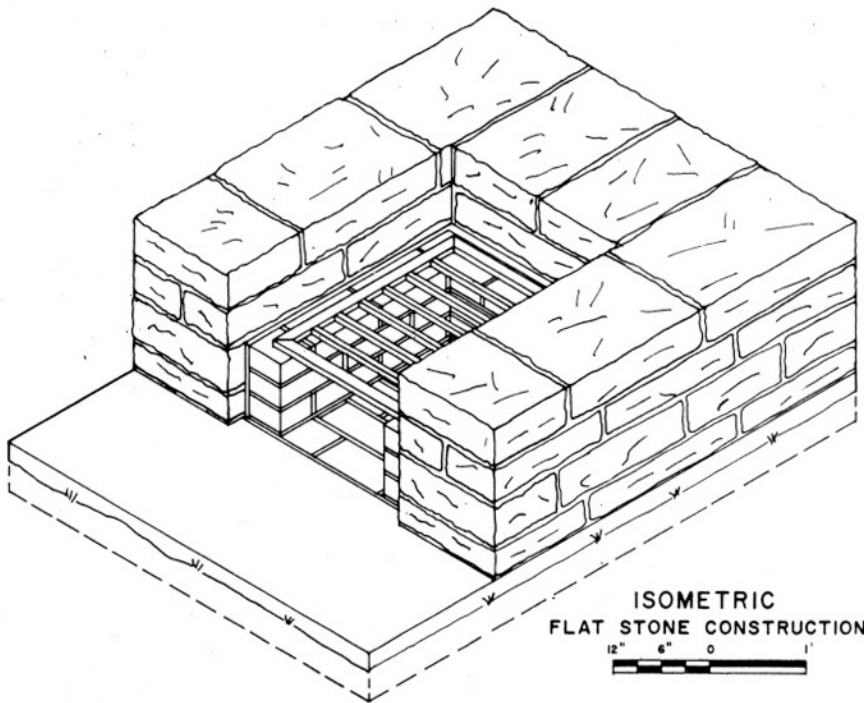
SECTION

BILL OF MATERIALS

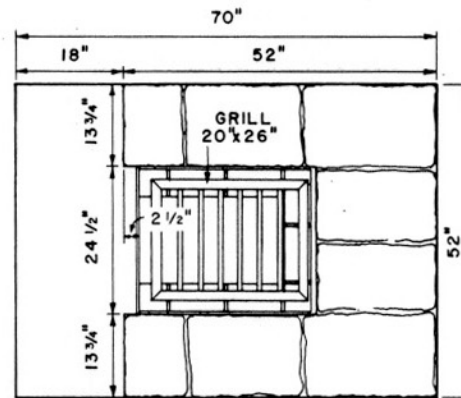
- BRICK CONSTRUCTION**
- 325 BRICK (COMMON OR FACE)
 - 44 FIREBRICK
 - 1 FLUE LINING 8"x8"
 - 9 RODS 3/8" ϕ x 23"
 - 1 STEEL PLATE 3/8"x3"x14"
 - 1 STEEL PLATE 3/8"x2"x14"
 - 1 STEEL PLATE 1/4"x16"x26"
 - 9 PCS. OF 1/2" PIPE 3" LG.
- MORTAR:**
- 2 96 LB. SACKS PORTLAND CEMENT
 - 200 LB. HYDRATED LIME
 - 800 LB. MASON SAND
- CONCRETE BASE:**
- 2 96 LB. SACKS PORTLAND CEMENT
 - 400 LB. SAND
 - 500 LB. GRAVEL OR STONE



ISOMETRIC
BRICK CONSTRUCTION
12" 6" 0 1"
SCALE: 1"=1'-0"



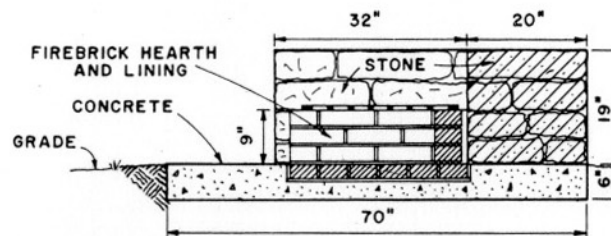
ISOMETRIC
FLAT STONE CONSTRUCTION
12" 6" 0 1"



PLAN

- BILL OF MATERIALS**
- FLAT STONE CONSTRUCTION**
- 37 FIREBRICK (9"x4 1/2"x2 1/2")
 - 20 CU. FT. FLAT STONE
 - 2 CU. FT. MORTAR (1:3 MIX)
 - 1 GRILL 20"x26"x3/4"
- MADE FROM 3/4"x1 1/2" STEEL FRAME & 3/4" SQ. BARS COMPLETELY WELDED
- FOUNDATION:** 1:2 1/4:3 MIX CEMENT-3 SACKS SAND-7 CU. FT. GRAVEL-11 1/4 CU. FT.

12" 6" 0 1"



SECTION

COOPERATIVE EXTENSION WORK IN
AGRICULTURE AND HOME ECONOMICS

AND
UNITED STATES DEPARTMENT OF AGRICULTURE COOPERATING

OUTDOOR FIREPLACES

USDA '76 6261 SHEET 2 OF 2