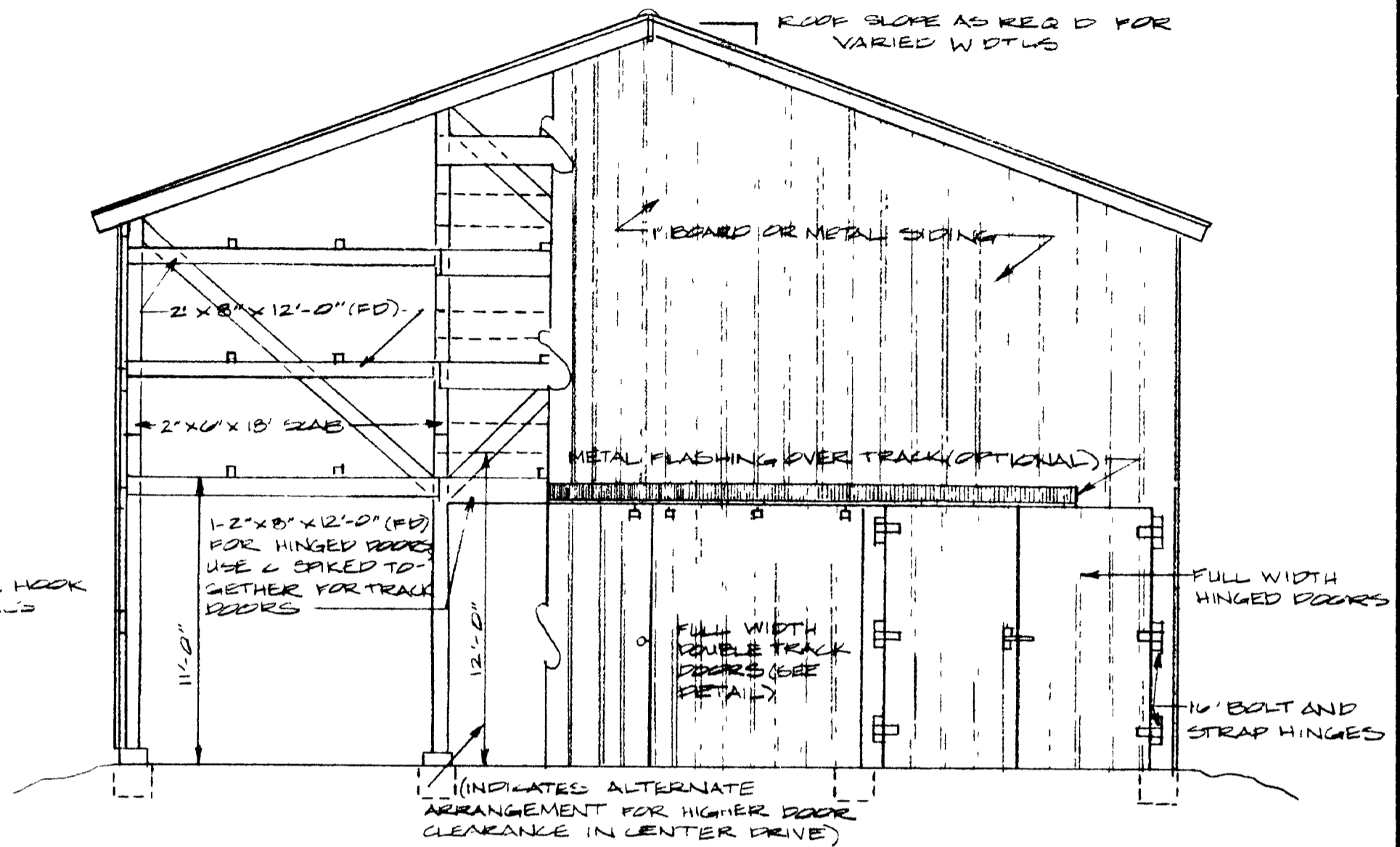
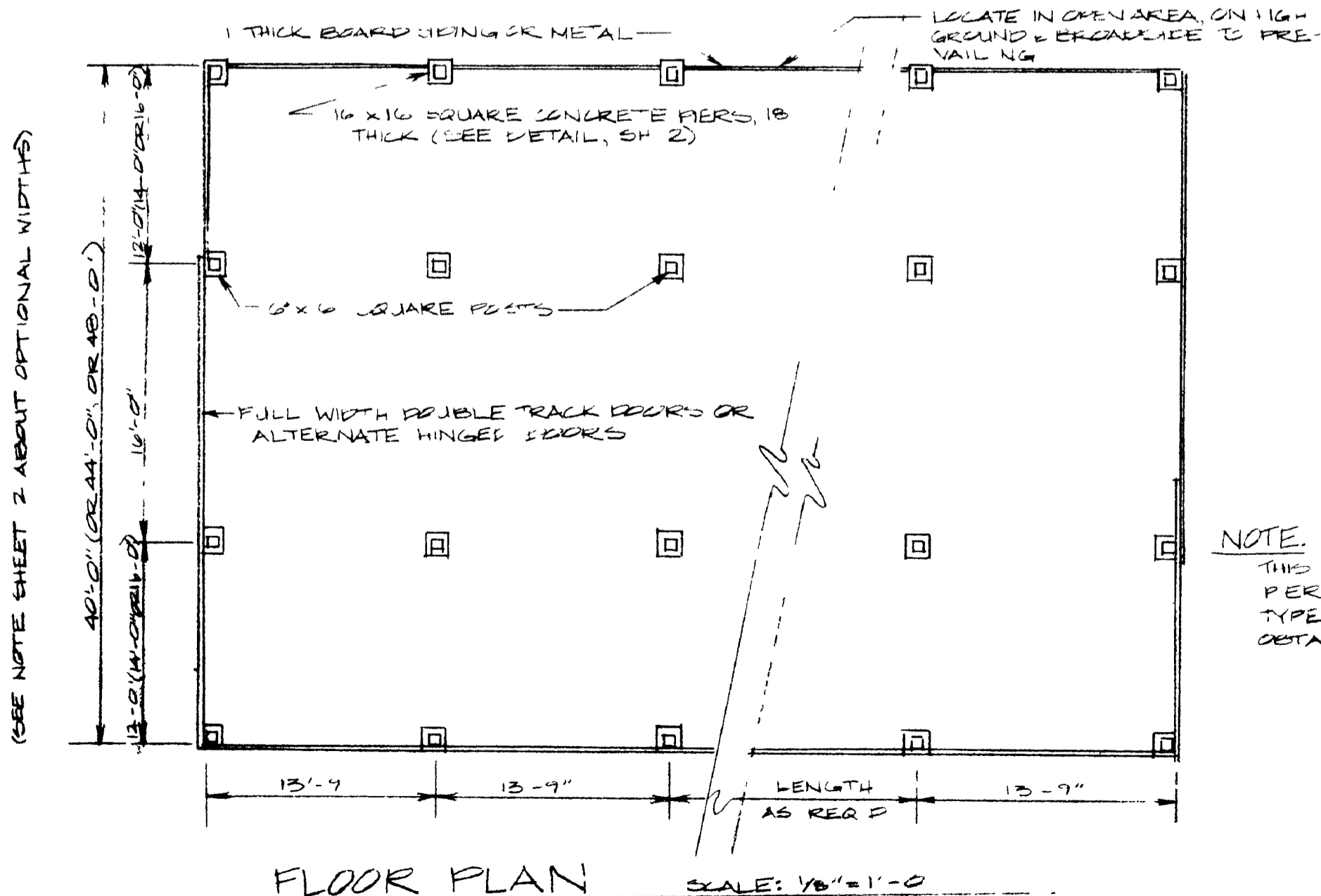


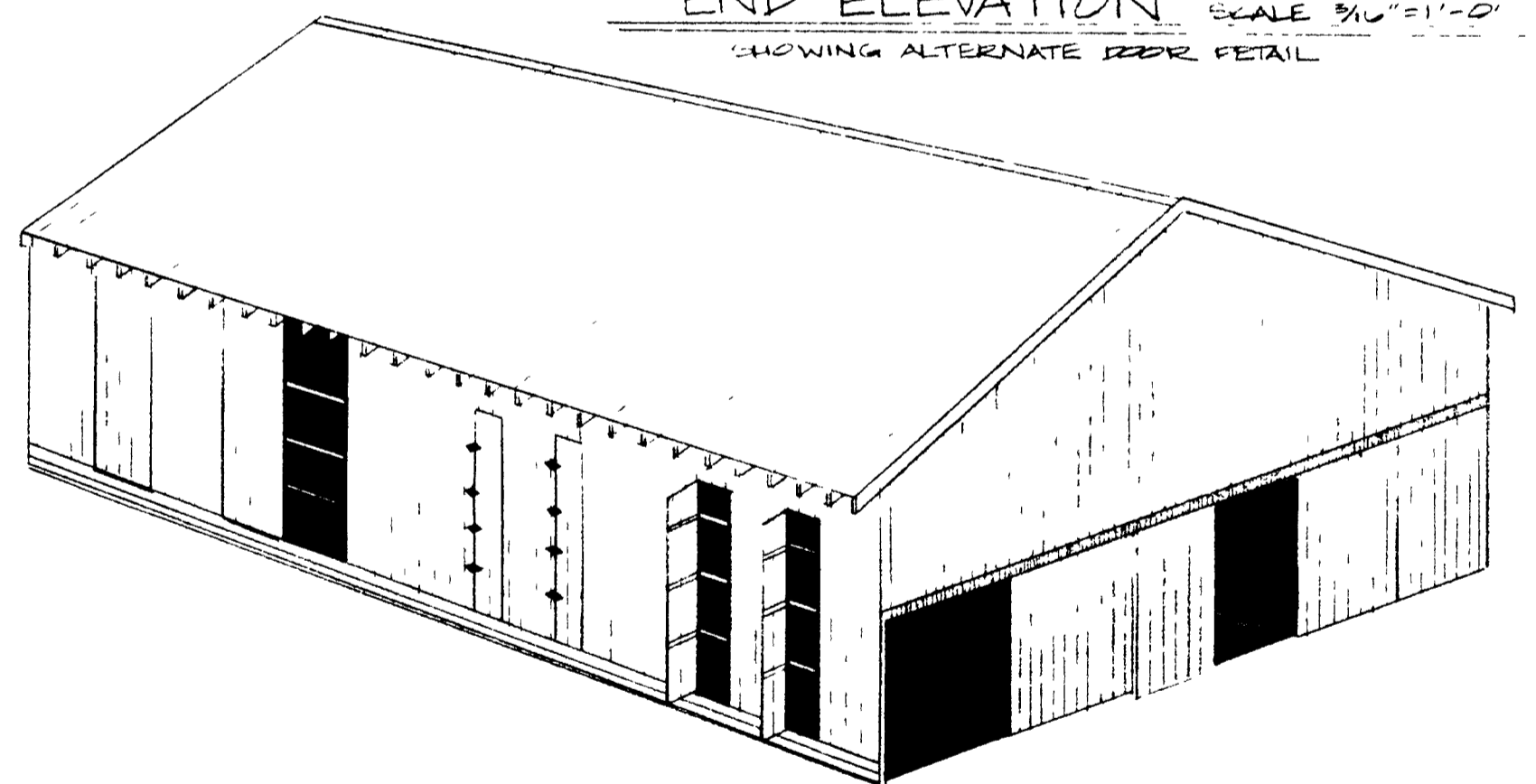
SIDE ELEVATION SCALE 3/16"=1'-0"
SHOWING ALTERNATE VENTILATOR PANEL



END ELEVATION SCALE 3/16"=1'-0"
SHOWING ALTERNATE DOOR DETAIL



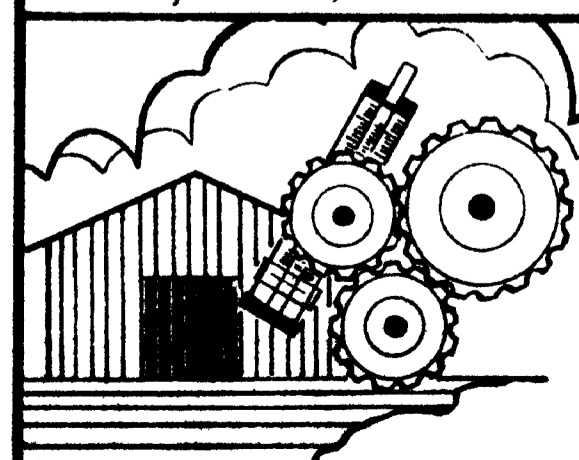
FLOOR PLAN SCALE: 1/8"=1'-0"



NOTE:
THIS PLAN SHOWS POST-CONCRETE PER CONSTRUCTION. IF POLE TYPE CONSTRUCTION IS DESIRED OBTAIN PLAN 735-27A

THESE PLANS ARE FOR USE AS A CONSTRUCTION GUIDE IF A CONSTRUCTION CONTRACT IS TO BE MADE WRITTEN SPECIFICATIONS ARE NEEDED"

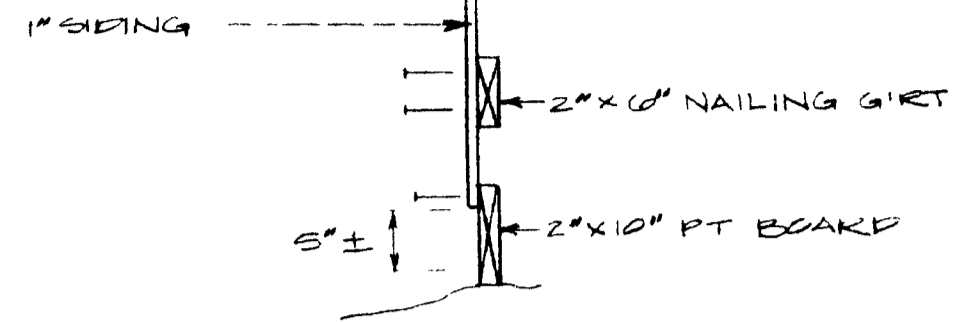
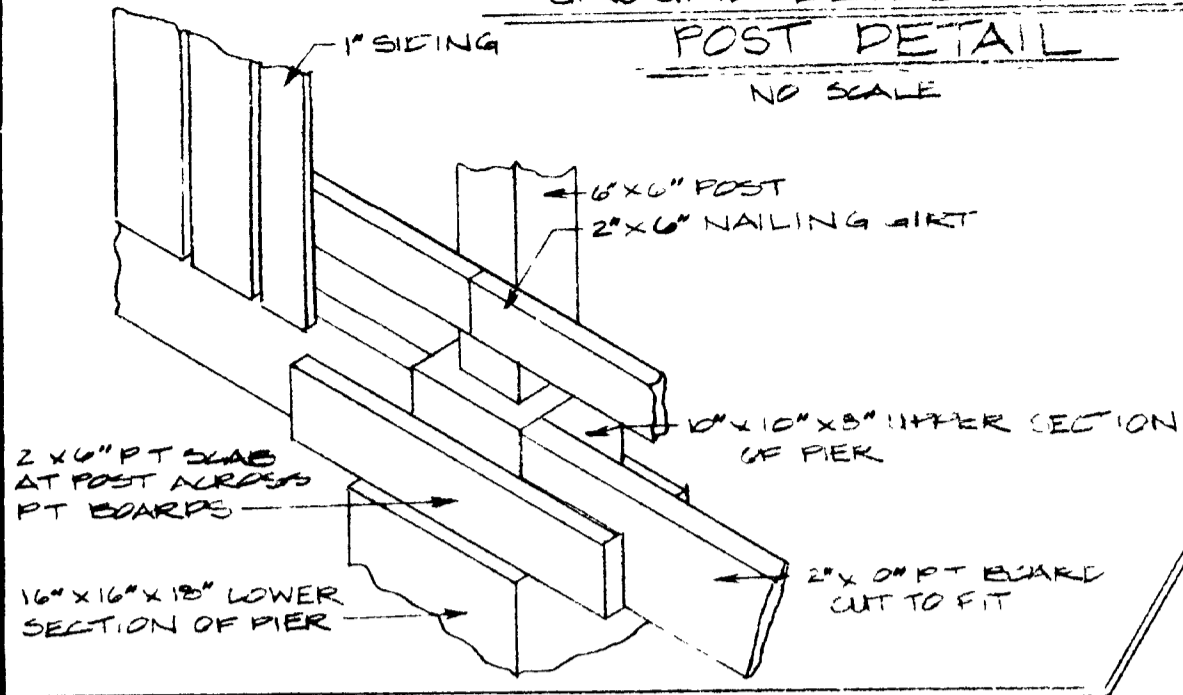
3-TIER, AIR-CURE BURLEY TOBACCO BARN
40'-0", 44'-0", OR 48'-0" POST-PIER CONSTRUCTION



COOPERATIVE EXTENSION SERVICE AGRICULTURE AND HOME ECONOMICS DEPARTMENT OF AGRICULTURAL ENGINEERING COLLEGE OF AGRICULTURE UNIVERSITY OF KENTUCKY AND U.S. DEPARTMENT OF AGRICULTURE COOPERATING	
DESIGNED BY G.A. DUNKAN	SHEET 1 OF 4
CHECKED BY G.A. DUNKAN	PLAN NUMBER
DRAWN BY S. ELLIOTT	KY. 11. 735-27A
DATE JUNE 8, 1982	REVISIONS JULY 25, 1985

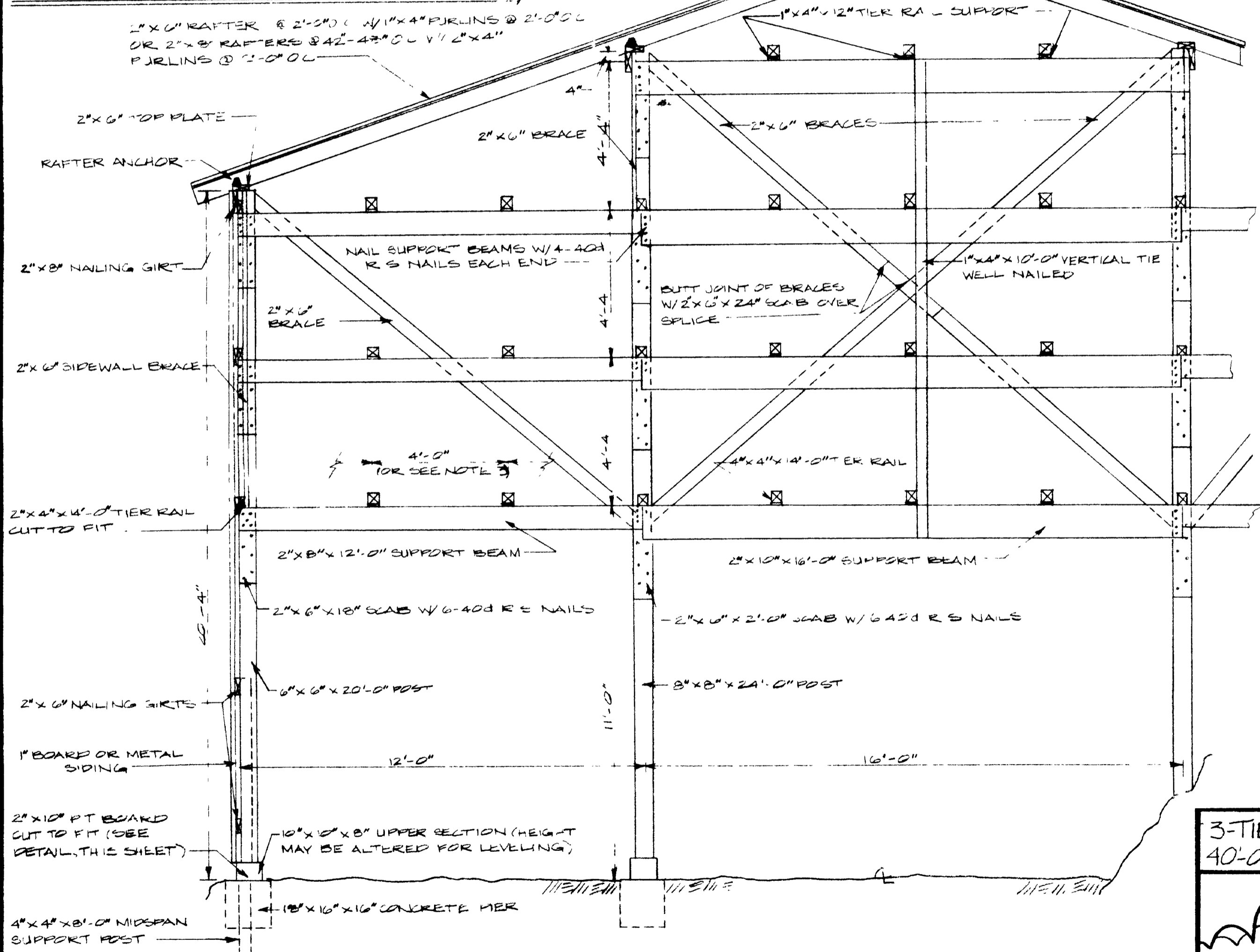
GROUND LEVEL SIDEWALL POST DETAIL

NO SCALE



GROUND LEVEL PT BOARD DETAIL

SCALE 3/4" = 1'-0"



CROSS SECTION

SCALE 3/16" = 1'-0"

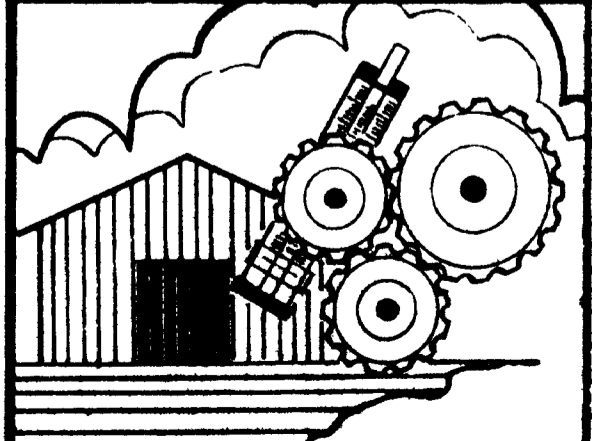
NOTES

- #1 USE GOOD QUALITY FULL DIMENSION ROUGH SAWN LUMBER, OAK OR EQUAL STRENGTH -
- #2 SIDE DRIVEWAYS MAY BE 14'-0" OR 16'-0" WIDE USE THE FOLLOWING SIZE MATERIALS

	14'-0" WIDE	16'-0" WIDE
RAFTERS	2"x6"x10'-0" @ 2'-0" O.C.	2"x6"x8'-0" @ 2'-0" O.C.
BEAMS	2"x10"x14'-0"	2"x10"x16'-0"
ROOFSLOPE	4/12 OR AS REQUIRED	
TIER RAIL SPACING IS	42" FOR 14'-0" SHELVES 48" FOR 12'-0" & 6'-0" SHELVES	

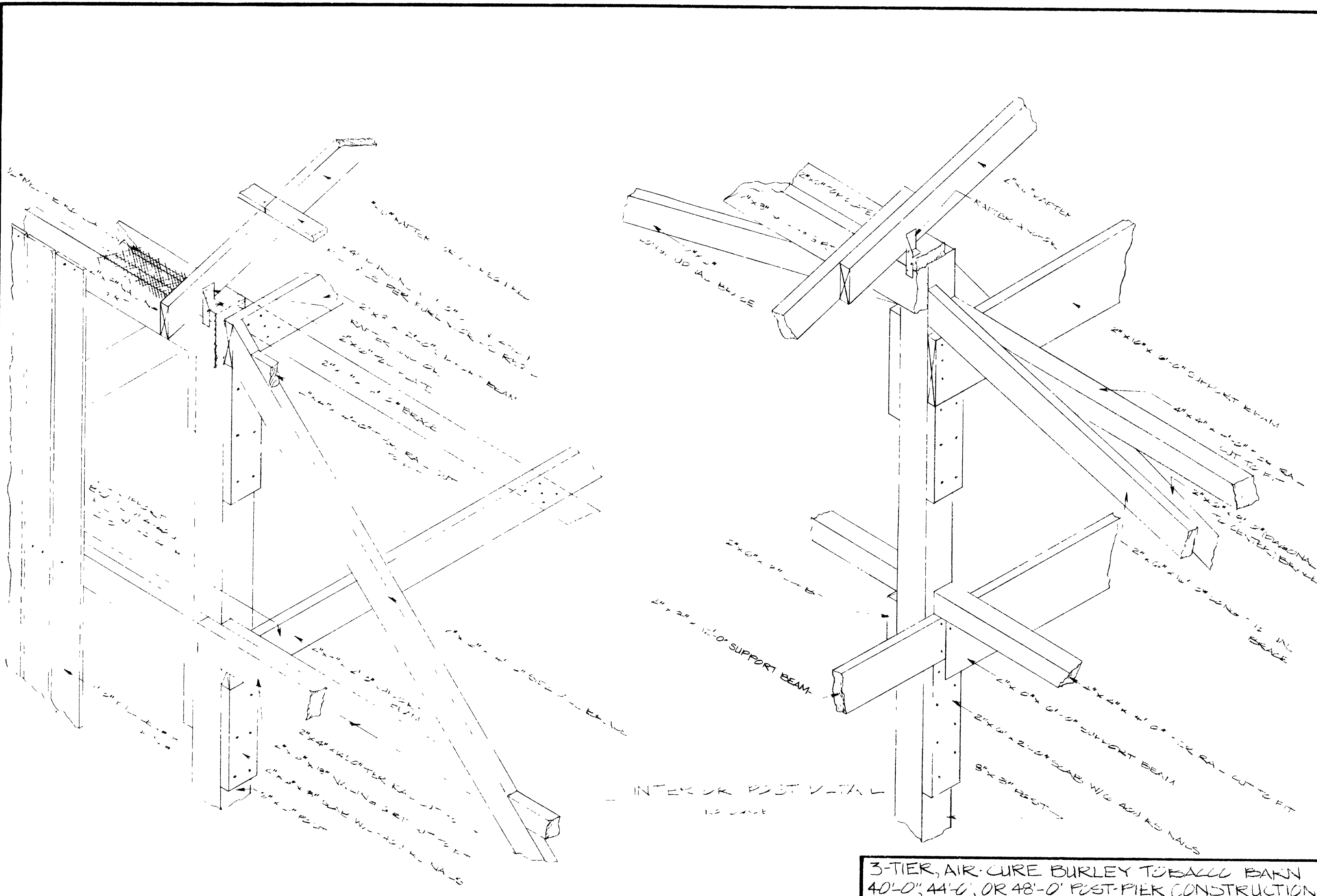
- #3 ALTERNATE TIER RAIL SPACING
 - FOR 12'-0"-16'-0"-12'-0" DRIVEWAYS. 12 RAILS AT 40" O.C.
 - FOR 4'-0"-16'-0"-14'-0" DRIVEWAYS. 4 RAILS (2 EACH SIDE WALL) AT 42" O.C. & 9 RAILS AT 40" O.C.
 - FOR 16'-0"-16'-0"-16'-0" DRIVEWAYS. 4 RAILS (2 EACH SIDEWALL) AT 42" O.C. & 15 RAILS AT 40" O.C.
- (ADJUST CROSS BRACES ACCORDINGLY FOR ALTERNATE TIER RAIL SPACING)

**3-TIER, AIR-CURE BURLEY TOBACCO BARN
40'-0", 44'-0", OR 48'-0" POST-PIER CONSTRUCTION**



COOPERATIVE EXTENSION SERVICE
AGRICULTURE AND HOME ECONOMICS
DEPARTMENT OF AGRICULTURAL ENGINEERING
COLLEGE OF AGRICULTURE
UNIVERSITY OF KENTUCKY
AND
U.S. DEPARTMENT OF AGRICULTURE COOPERATING

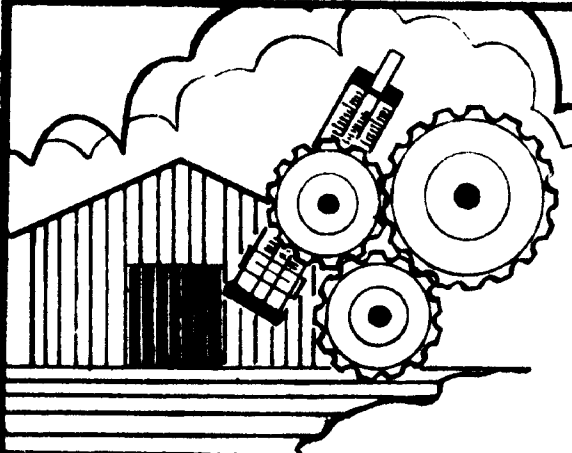
DESIGNED BY G. A. DUNCAN	SHEET 2 OF 4
CHECKED BY G. A. DUNCAN	PLAN NUMBER
DRAWN BY S. ELLIOTT	KY. II. 735-21A
DATE JUNE 10, 1982	
REVISIONS JULY 26, 1985	



INTERIOR POST WITH
NO JOIST

SIDE WALL POST WITH
NO JOIST

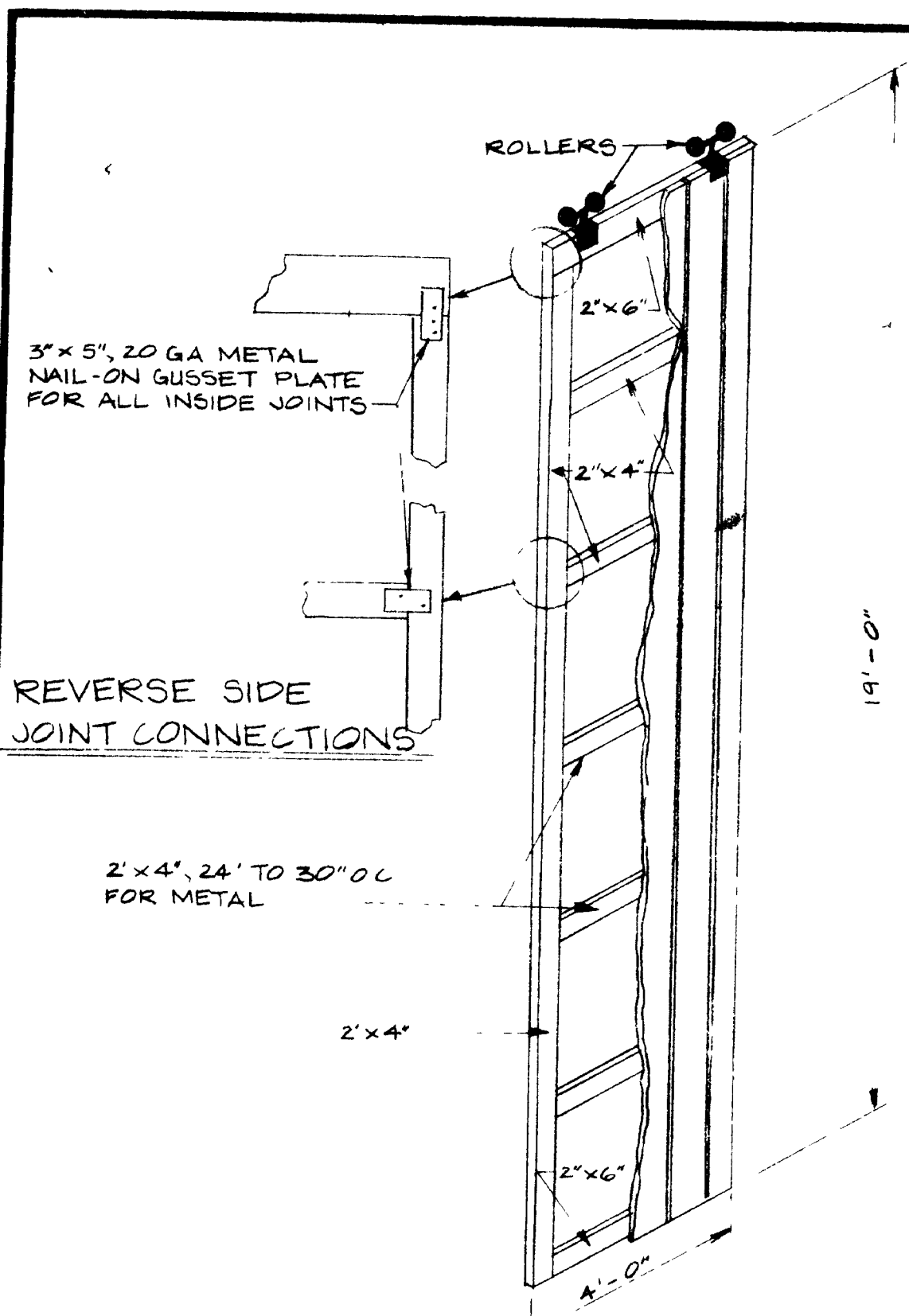
3-TIER, AIR-CURE BURLEY TOBACCO BARN
40'-0", 44'-0", OR 48'-0" POST-PIEK CONSTRUCTION



COOPERATIVE EXTENSION SERVICE
AGRICULTURE AND HOME ECONOMICS
DEPARTMENT OF AGRICULTURAL ENGINEERING
COLLEGE OF AGRICULTURE
UNIVERSITY OF KENTUCKY
AND
U.S. DEPARTMENT OF AGRICULTURE COOPERATING

DESIGNED BY G. A. DUNNAN
CHECKED BY G. A. DUNNAN
DRAWN BY S. ELLIOTT
DATE JUNE 12, 1942
REVISIONS JULY 27, 1945

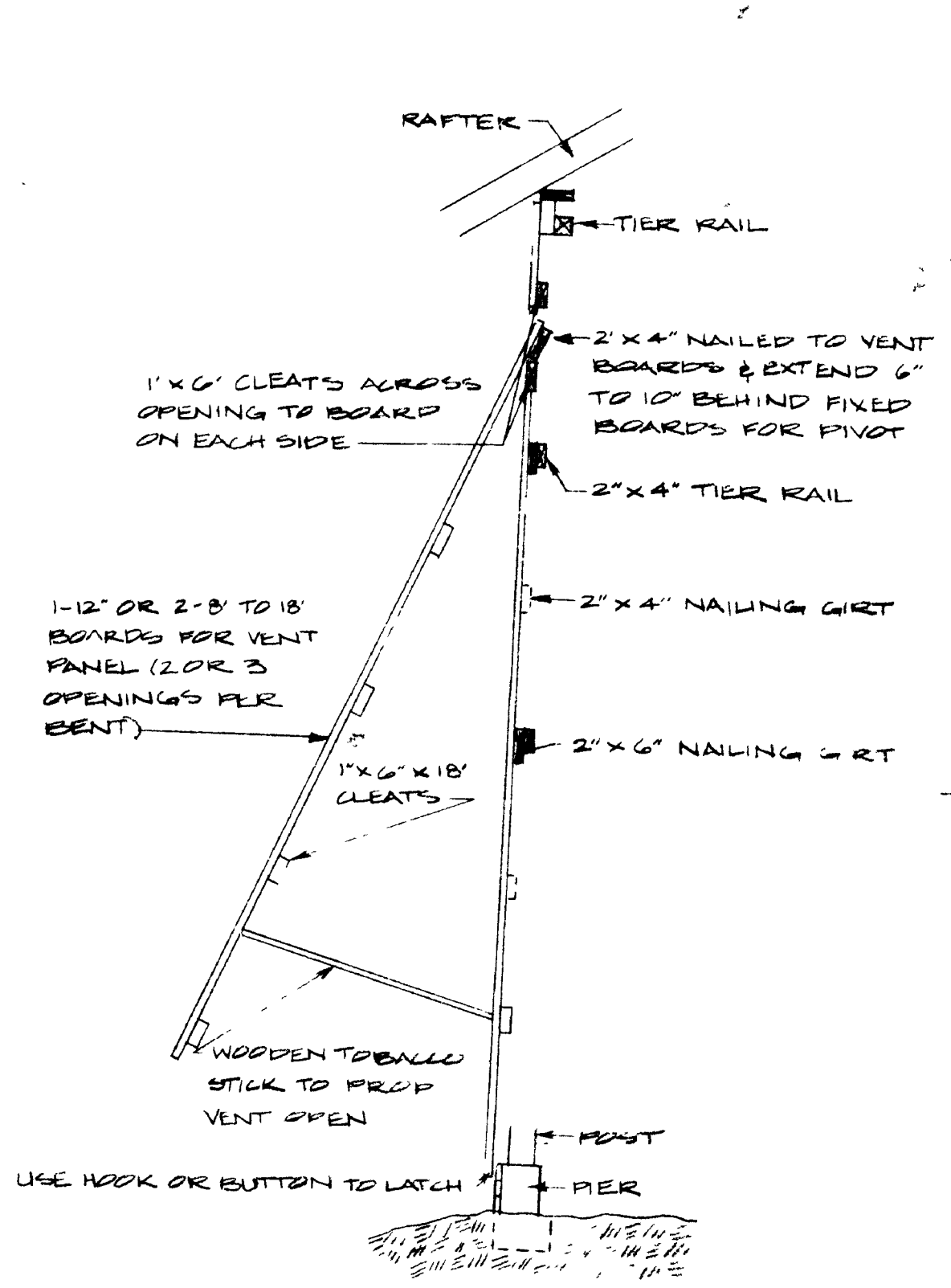
SHEET 3 OF 4
PLAN NUMBER
KY. 11.735-27A



REVERSE SIDE JOINT CONNECTIONS

2'x4", 24' TO 30" O.C. FOR METAL

ON TRACK



RAFTER
TIER RAIL
2'x4" NAILED TO VENT BOARDS & EXTEND 6" TO 10" BEHIND FIXED BOARDS FOR PIVOT
2'x4" TIER RAIL
2'x4" NAILING GIRT
2'x6" NAILING GIRT

1'x6" CLEATS ACROSS OPENING TO BOARD ON EACH SIDE

1-12" OR 2-8" TO 18" BOARDS FOR VENT PANEL (2 OR 3 OPENINGS PER BENT)

1'x6" x 18" CLEATS

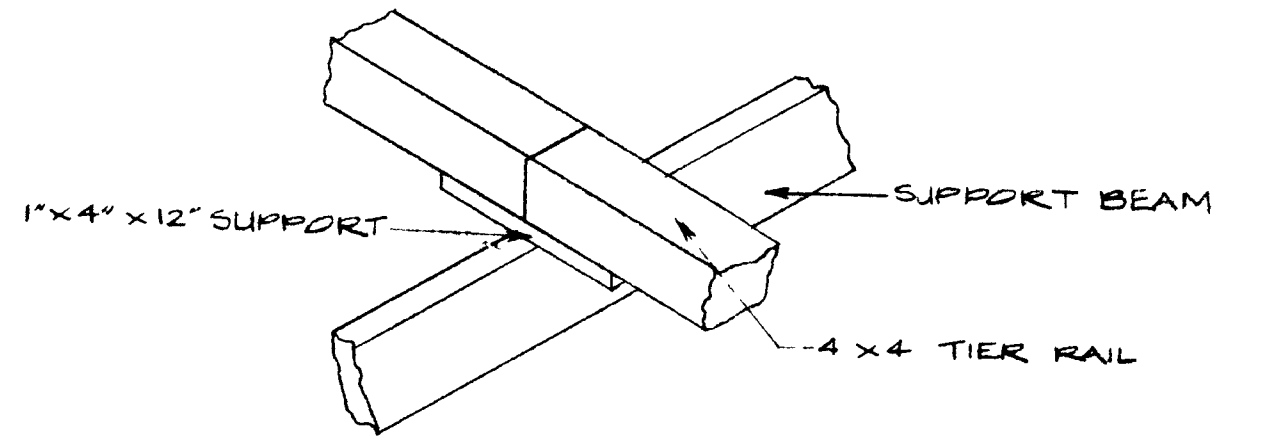
WOODEN TENON STICK TO PROP VENT OPEN

POST
PIER

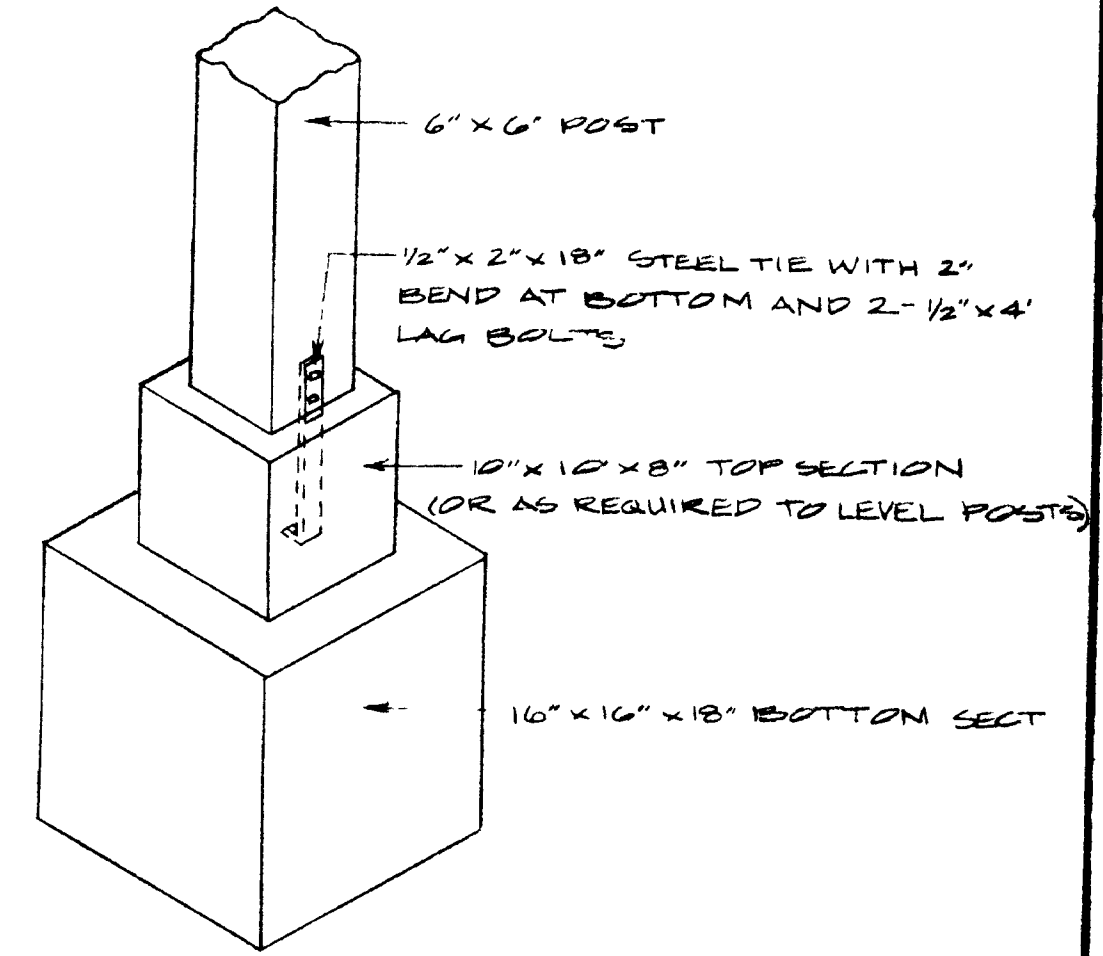
USE HOOK OR BUTTON TO LATCH

(OPTIONS)
SIDE WALL VENT DOORS
NO SCALE

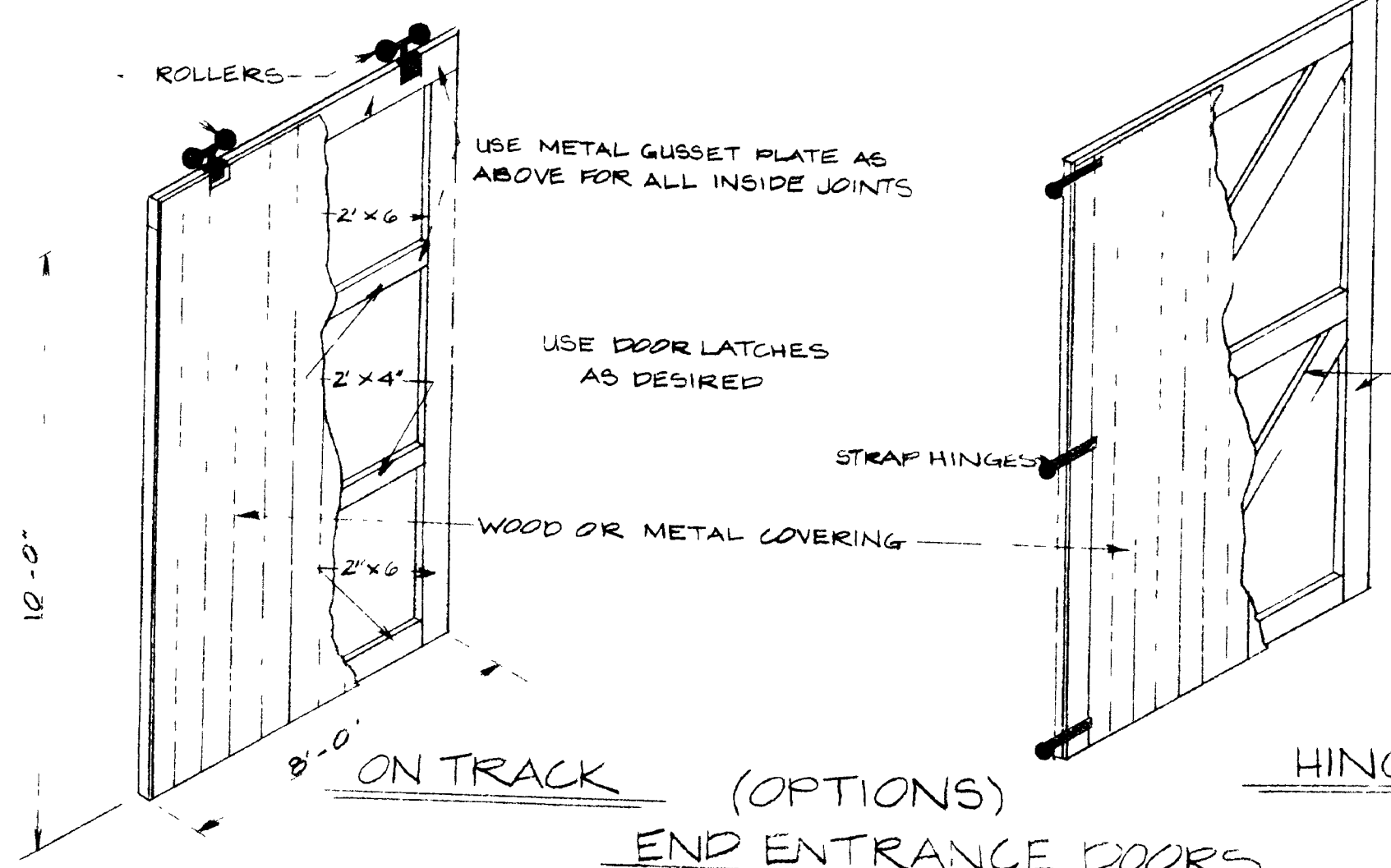
HINGELESS



TIER RAIL SUPPORT DETAIL
NO SCALE



CONCRETE POST ANCHORAGE DETAIL
NO SCALE



USE METAL GUSSET PLATE AS ABOVE FOR ALL INSIDE JOINTS

USE DOOR LATCHES AS DESIRED

STRAP HINGES

WOOD OR METAL COVERING

1'x6" FOR WOOD COVERING (2'x6" FRAME W 2'x4" BRACES FOR METAL COVERING)

(OPTIONS)
END ENTRANCE DOORS
NO SCALE

HINGED

3-TIER AIR CURE BURLEY TOBACCO BARN
40'-0", 44'-0", OR 48'-0" POST-PIER CONSTRUCTION

COOPERATIVE EXTENSION SERVICE
AGRICULTURE AND HOME ECONOMICS
DEPARTMENT OF AGRICULTURAL ENGINEERING
COLLEGE OF AGRICULTURE
UNIVERSITY OF KENTUCKY
AND
U.S. DEPARTMENT OF AGRICULTURE COOPERATING

DESIGNED BY G. A. DUNKAN	SHEET 4 OF 4
CHECKED BY G. A. DUNKAN	PLAN NUMBER
DRAWN BY S. ELLIOTT	KY. II. T35-27A
DATE JUNE 10, 1952	
REVISIONS AUG. 1, 1955	