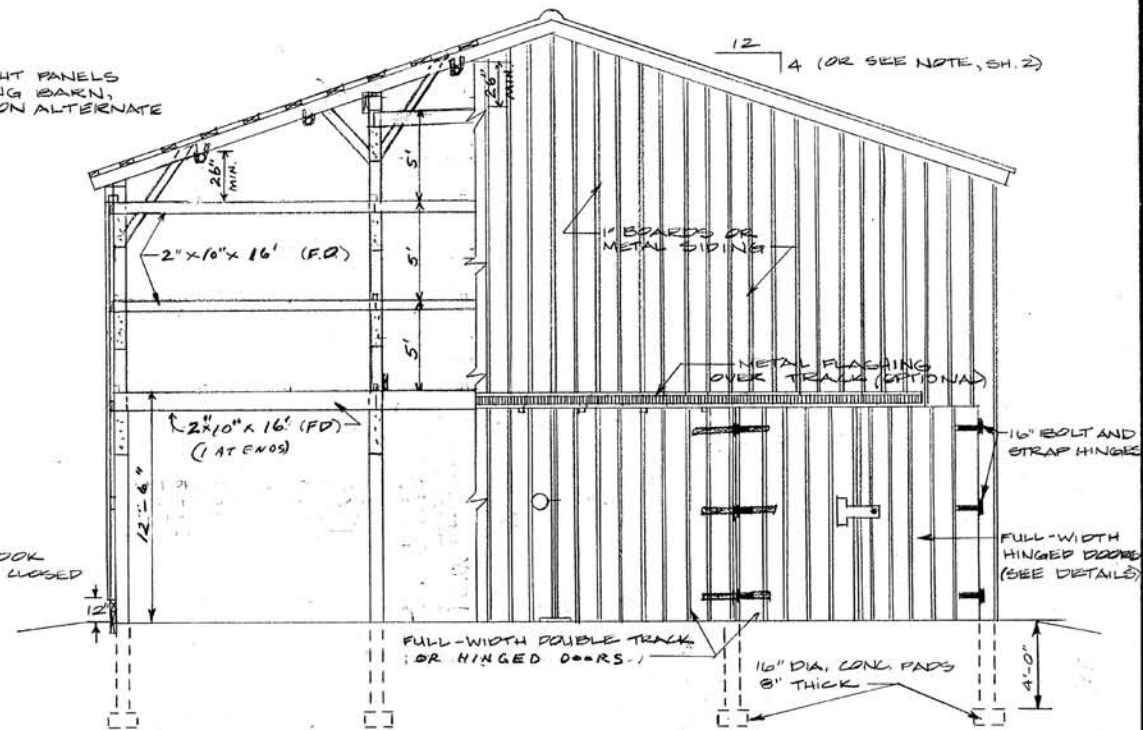
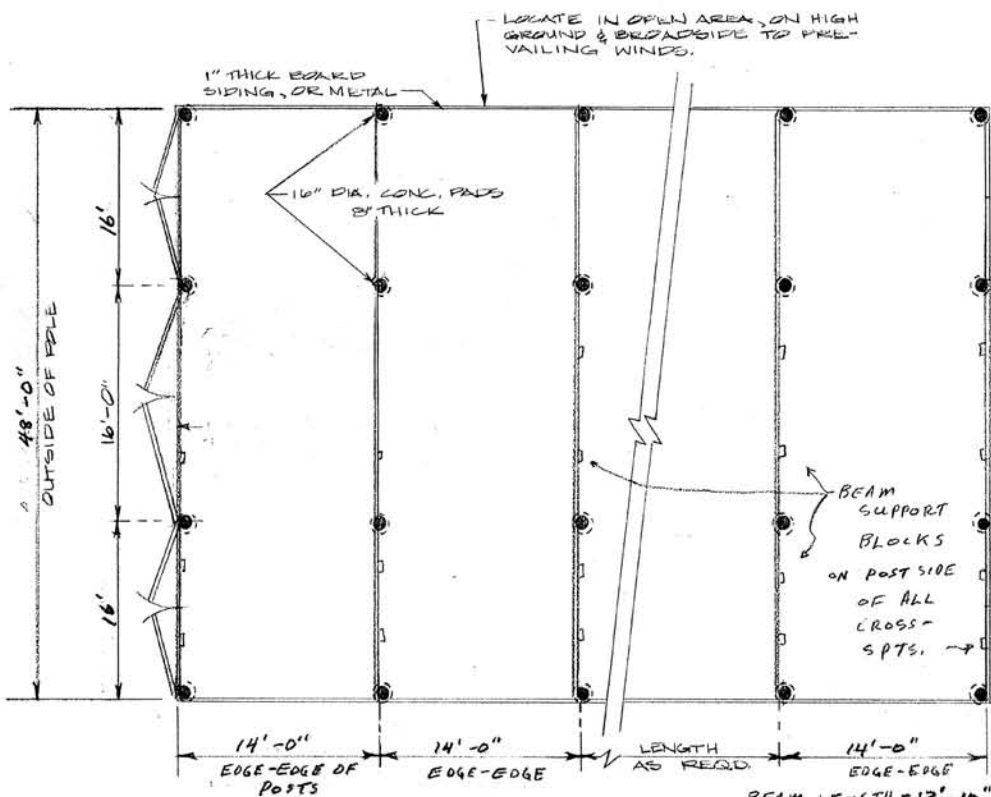


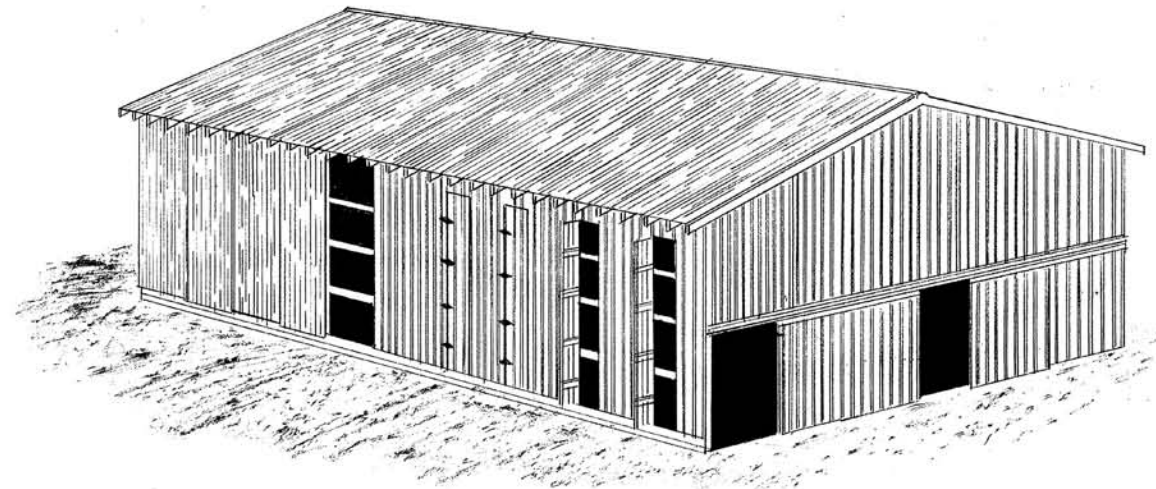
**SIDE ELEVATION** SCALE: 3/16" = 1'-0"  
SHOWING ALTERNATE VENTILATOR PANELS



**END ELEVATION** NO SCALE



**FLOOR PLAN**  
NO SCALE

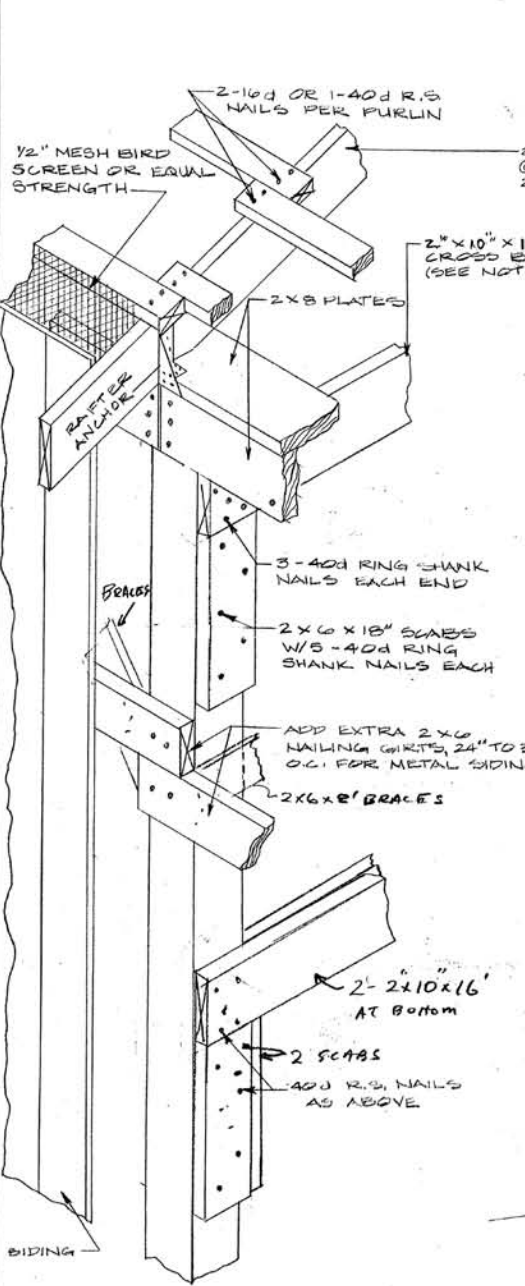


NOTE: ALL LUMBER OAK OR YEL. PINE, FULL DIMENSION, FREE OF KNOTS, OR EQUAL.

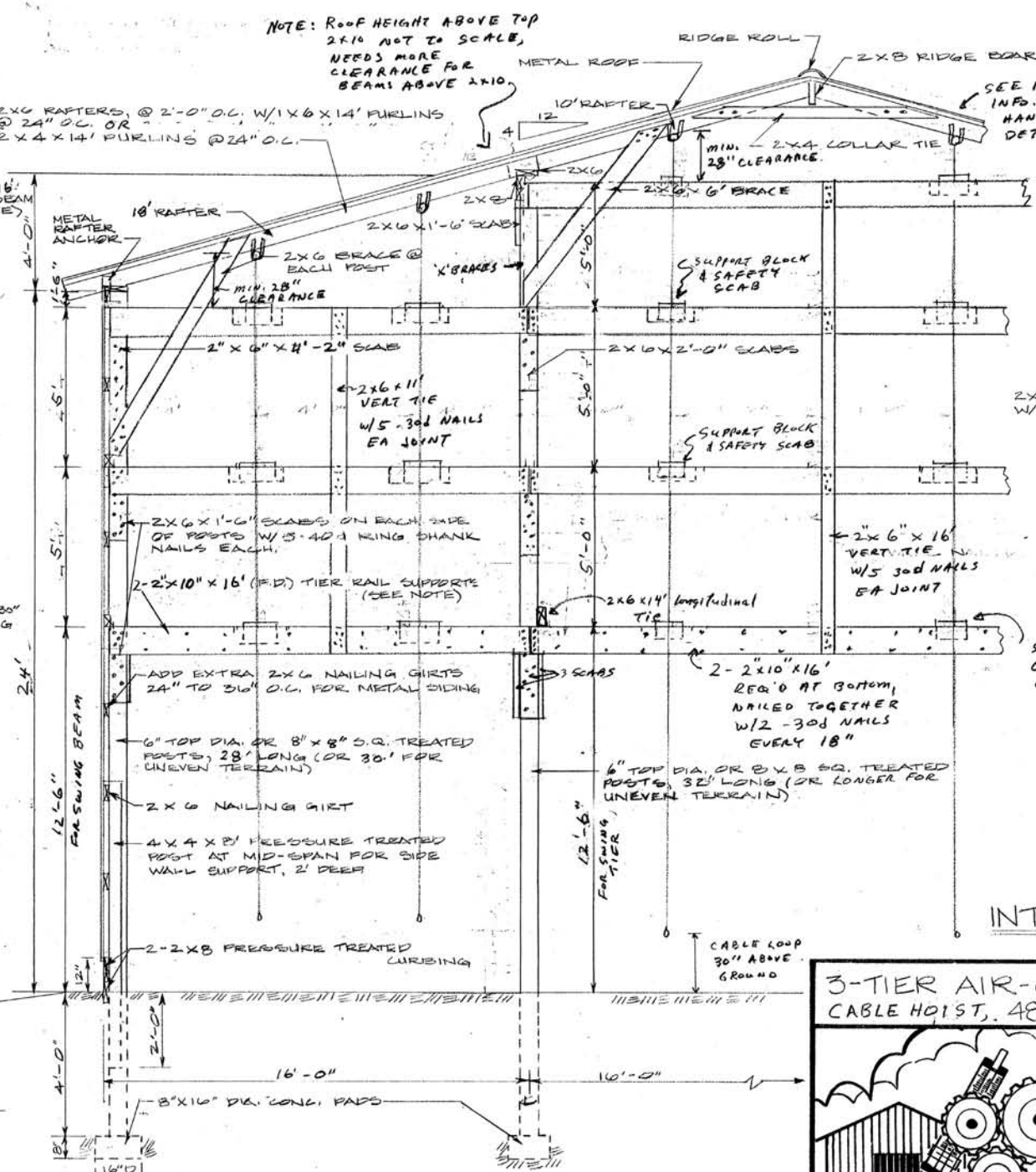
NOTE: OBTAIN LITERATURE "INFO. ON CABLE HOIST SYSTEM" BEFORE BEGINNING CONSTRUCTION FOR MORE DETAILS, SPECIFICATIONS

NOTE: THIS PLAN SHOWS POLE-TYPE CONSTRUCTION. IF POST-CONCRETE PIER TYPE CONSTRUCTION DESIRED, OBTAIN PLAN 735-27K.

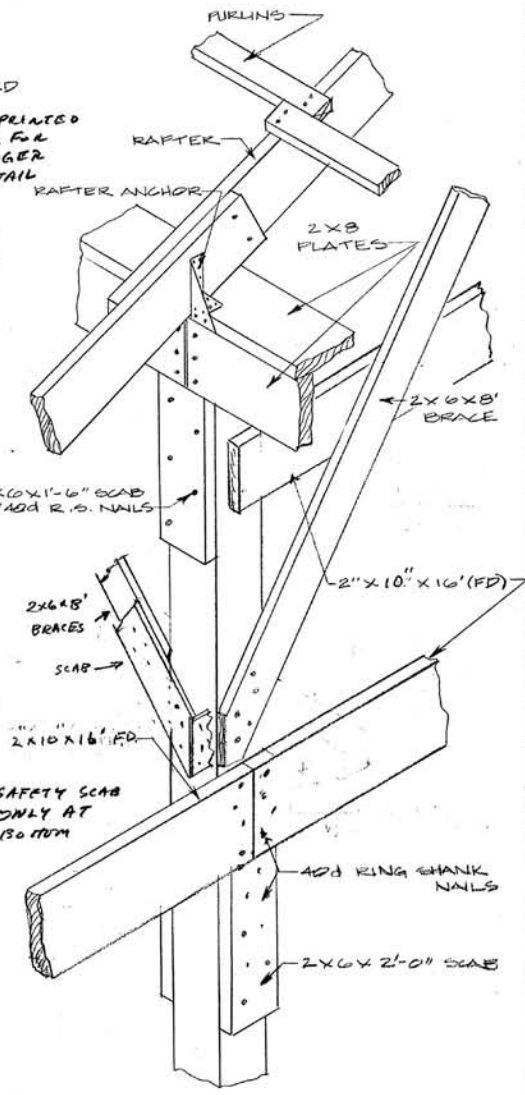
		<b>3-TIER AIR CURE BURLEY BARN</b> <b>48 FT. WIDE POLE CONST. FOR CABLE HOIST</b>	
		COOPERATIVE EXTENSION SERVICE AGRICULTURE AND HOME ECONOMICS DEPARTMENT OF AGRICULTURAL ENGINEERING COLLEGE OF AGRICULTURE UNIVERSITY OF KENTUCKY AND U.S. DEPARTMENT OF AGRICULTURE COOPERATING	
DESIGNED BY: G. A. DUNCAN	CHECKED BY: G. A. DUNCAN	SHEET 1 OF 3	PLAN NUMBER
DRAWN BY: S. ELLIOTT	DATE: 8-71, 1-82		<b>KY. II. 735-29C</b>
REVISIONS: 11-85			Rev. 1-92



SIDEWALL POST DETAIL  
NO SCALE



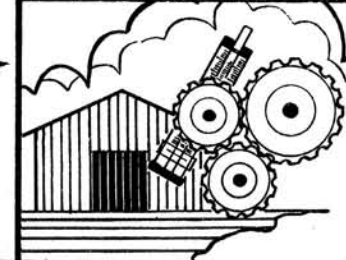
CROSS-SECTION  
(NOT TO SCALE)



INTERIOR POST DETAIL  
(NO SCALE)

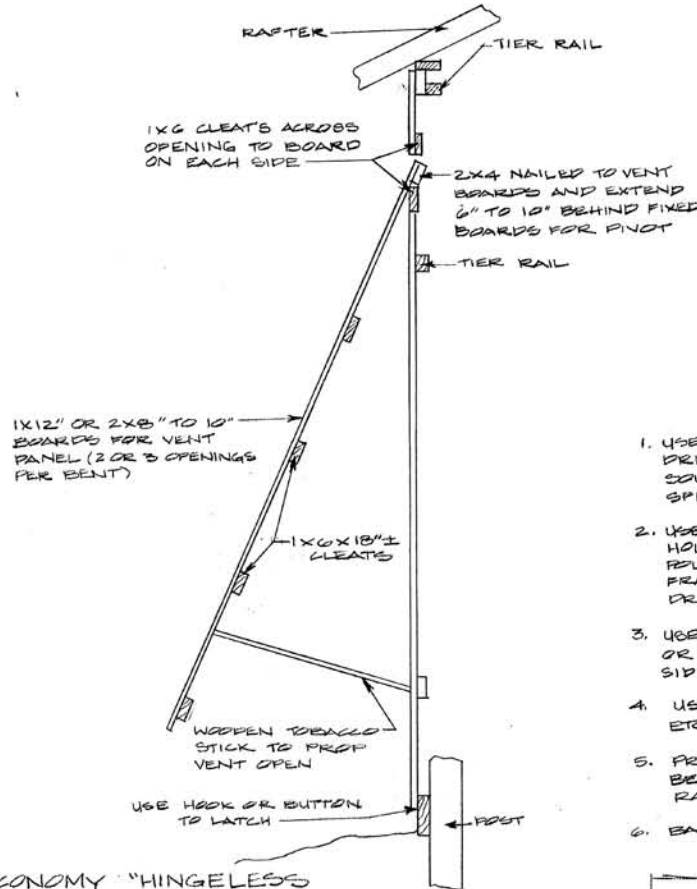
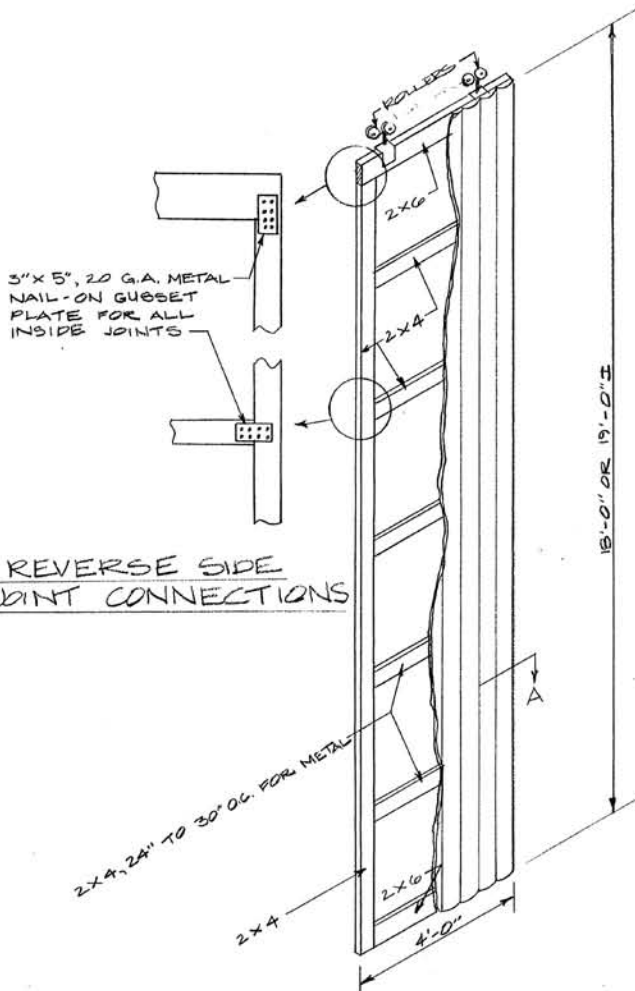
NOTE: ROOF HEIGHT ABOVE TOP  
2x10 NOT TO SCALE,  
NEEDS MORE  
CLEARANCE FOR  
BEAMS ABOVE 2x10.

3-TIER AIR-CURE BURLEY BARN  
CABLE HOIST, 48' WIDE POLE CONST.



COOPERATIVE EXTENSION SERVICE  
AGRICULTURE AND HOME ECONOMICS  
DEPARTMENT OF AGRICULTURAL ENGINEERING  
COLLEGE OF AGRICULTURE  
UNIVERSITY OF KENTUCKY  
AND  
U.S. DEPARTMENT OF AGRICULTURE COOPERATING

DESIGNED BY: G.A. DUNKAN  
CHECKED BY: G.A. DUNKAN  
DRAWN BY: S. ELLIOTT  
DATE: 8-71  
REVISIONS: 4-74, 1-82, 11-88  
SHEET 2 OF 3  
PLAN NUMBER  
KY. II. 735-29C  
REV 7-92



**MATERIALS AND CONSTRUCTION NOTES**

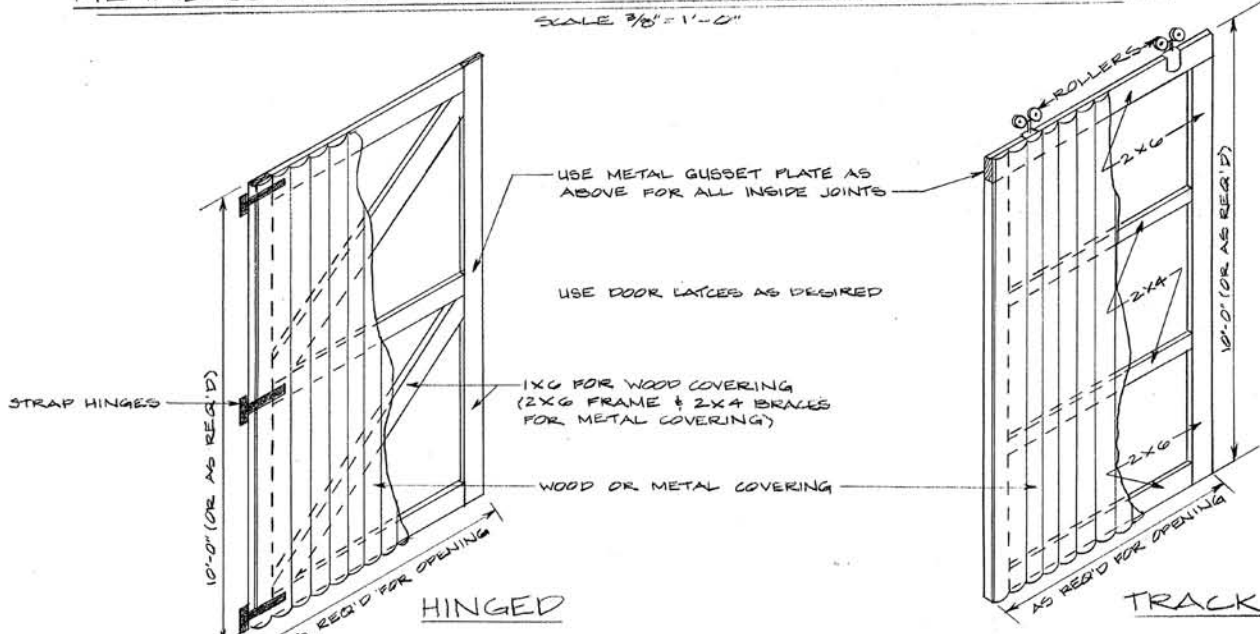
1. USE GOOD QUALITY FULL DIMENSION (F.D.) ROUGH SAWN LUMBER, OR DRESSED (S&S) LUMBER OF STANDARD GRADE DOUGLAS FIR, NO. 2 SOUTHERN YELLOW PINE, EQUIVALENT OR BETTER, OF THE SIZES SPECIFIED ON THE PLANS.
2. USE RING SHANK OR SCREEN SHANK POLE BARN NAILS FOR SUPERIOR HOLDING STRENGTH, ESPECIALLY FOR ALL CONNECTIONS TO PRES. TRTD. POLES AND ALL SOFTWOOD LUMBER NAILING. USE 40d (5") NAILS FOR FRAMING - TO - PRES. TRTD. POLE JOINTS; USE 12d OR 16d FOR ALL DRESSED (S&S) LUMBER FRAMING, OR 16d (3 1/2") FOR LUMBER FRAMING.
3. USE RING SHANK OR SCREEN SHANK ROOFING NAILS WITH NEOPRENE WASHER OR LEAD-UNDER-HEAD PER MFGRS. SPECS. FOR ALL METAL ROOFING OR SIDING ATTACHMENT.
4. USE HEAVY-DUTY DOUBLE TRACK WITH ADEQUATE HANGERS, ROLLERS, ETC., FOR ENTRANCE DOORS.
5. PRESERVATIVE TREATED POLES, POSTS, AND CHROBING BOARDS SHALL BE CREOSOTE, PENTA, OR OSMOSE K-33 TREATED TO RETENSION RATE SPECIFIED BY A.W.P.A. FOR GROUND CONTACT USE.
6. BARN CAPACITY (ACRES PER 14'-0" BENT, 26 BEAMS/BENT

6 PLANTS/STICK

PLANTS/ACRE	STK. SPACING:	
	17"	6.5"
8,000	.82	.88
7,500	.87	.94
7,000	.94	1.00

**METAL-COVERED SIDE WALL VENT DOORS ON TRACK**

SCALE 3/8" = 1'-0"

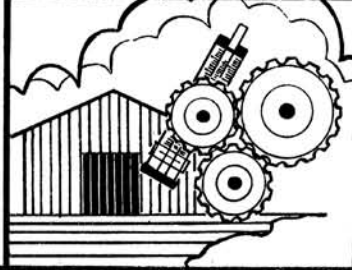


**END ENTRANCE DOORS**

SCALE: 3/8" = 1'-0"

7. FOR FURTHER INFORMATION ON TOBACCO BARN TYPES AND NEW METHODS OF HARVESTING AND HOUSING TOBACCO, SEE PUBLICATIONS "TOBACCO HANDBOOK" AND OTHER AVAILABLE LITERATURE.

**3-TIER AIR-CURE BURLEY BARN  
CABLE HOIST. 48' WIDE POLE CONSTRUCTION**



COOPERATIVE EXTENSION SERVICE  
AGRICULTURE AND HOME ECONOMICS  
DEPARTMENT OF AGRICULTURAL ENGINEERING  
COLLEGE OF AGRICULTURE  
UNIVERSITY OF KENTUCKY  
AND  
U.S. DEPARTMENT OF AGRICULTURE COOPERATING

DESIGNED BY: G. A. DUNCAN SHEET 3 OF 3  
CHECKED BY: G. A. DUNCAN  
DRAWN BY: S. ELLIOTT PLAN NUMBER  
DATE: 8-7-42 BY: J. L. B. KY. 11, 735-290  
REVISIONS: 12-85