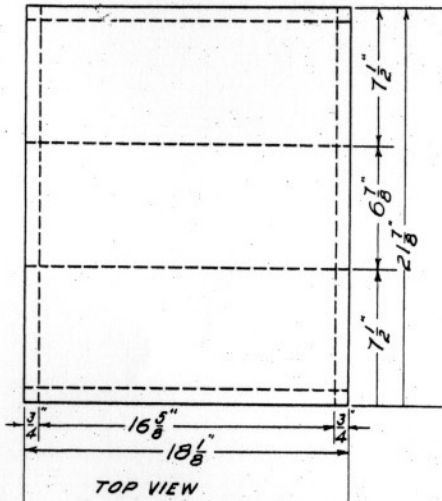


Important: Warranty Disclaimer for Plans

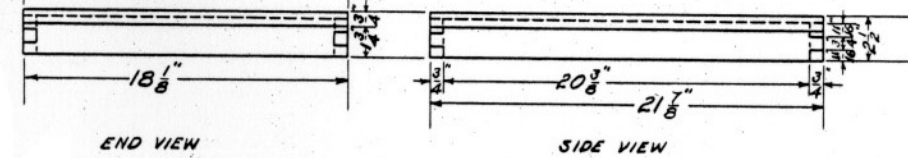
For the convenience of our clientele, this website makes available conceptual plans that can be helpful in planning buildings, facilities, or other structures. They were developed over many years by engineers at Land Grant universities through the former USDA Cooperative Farm Buildings Plan Exchange. *Regardless of the original intent, these are older plans that provide conceptual information only, and are not to be considered or used as construction plans.*

These plans do not claim to represent the most current technology or the most recent construction techniques, standards, or codes. For example, over the years there have been changes in the National Design Specifications for Wood Construction, changes in the strengths and types of building materials, and changes in fasteners, among other things. Those changes, along with variations in climate, building codes, and other factors, make it imperative that professional services be utilized for your specific project. Suggested services include, but are not limited to, structural design, assurance of compliance with codes and regulations, site selection, construction supervision, and provision for utilities, waste management, and access. *These plans do not replace the need for competent design assistance in developing safe, legal, and well-functioning agricultural buildings and systems.*

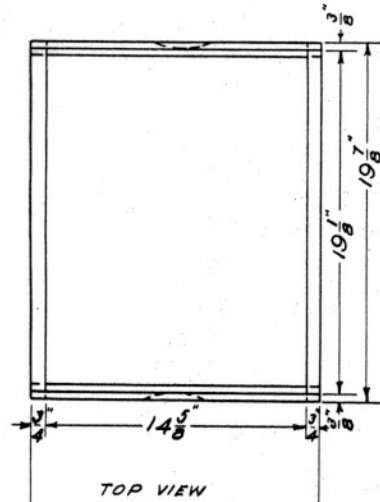
Neither the University of Kentucky, the Midwest Plan Service, the United States Department of Agriculture, nor any of the cooperating Land Grant universities, warranty these plans. They are for conceptual use only and are not for use as construction plans.



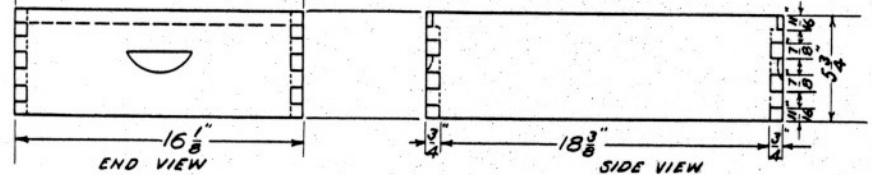
MATERIALS FOR LID		
NAME	PCS.	SIZE
ENDS	2	$3/4 \times 2 1/8 \times 18 1/8$
SIDES	2	$3/4 \times 2 1/8 \times 21 1/8$
TOP	2	$3/8 \times 7 1/2 \times 18 1/8$
TOP	1	$3/8 \times 6 1/8 \times 18 1/8$
NO. 28 GAUGE GALV. IRON $19 3/8 \times 23 3/8$		



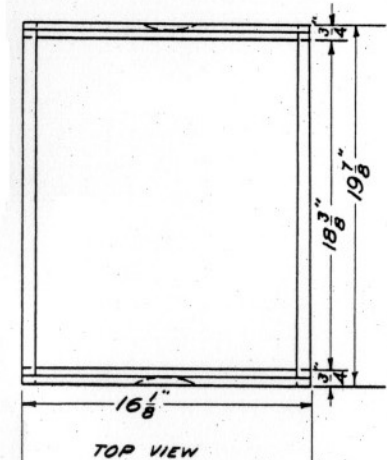
DETAILS OF TELESCOPE LID



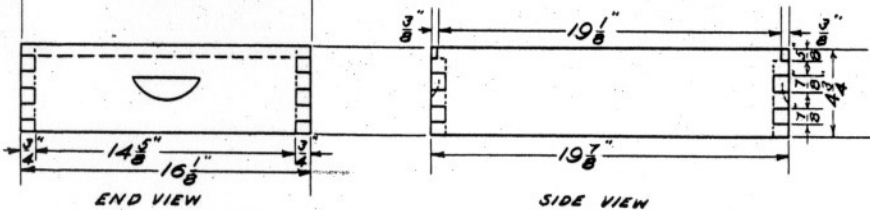
MATERIALS FOR SHALLOW SUPER		
NAME	PCS.	SIZE
ENDS	2	$3/4 \times 5 3/4 \times 16 1/8$
SIDES	2	$3/4 \times 5 3/4 \times 19 7/8$



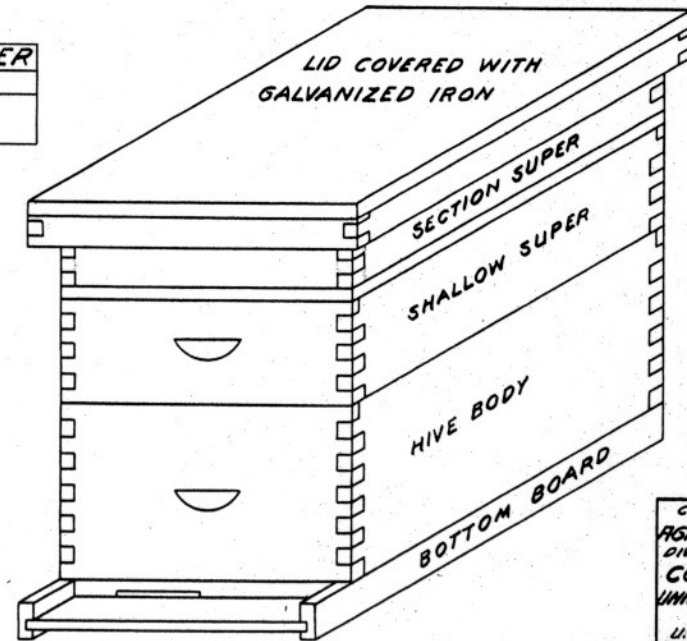
DETAILS OF SHALLOW SUPER



MATERIALS FOR SECTION SUPER		
NAME	PCS.	SIZE
SIDES	2	$3/4 \times 4 3/4 \times 19 1/8$
ENDS	2	$3/4 \times 4 3/4 \times 16 1/8$

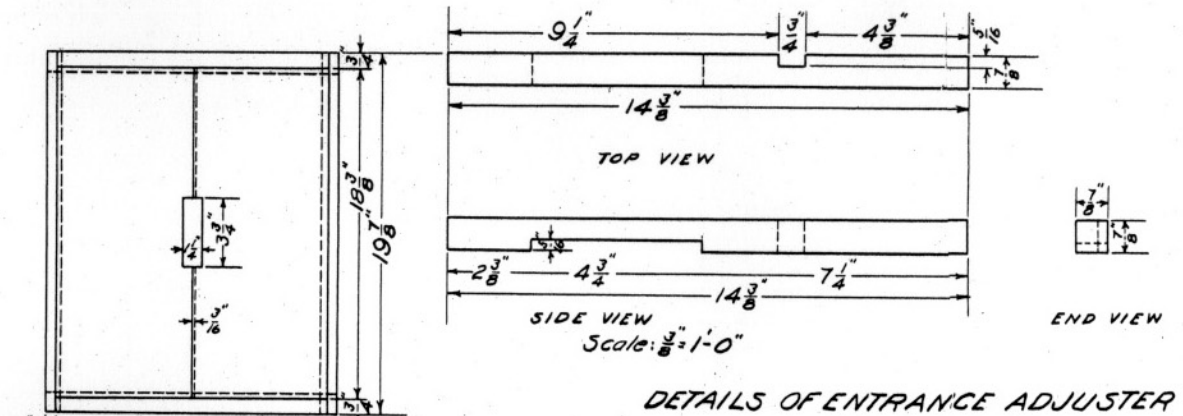


DETAILS OF SECTION SUPER

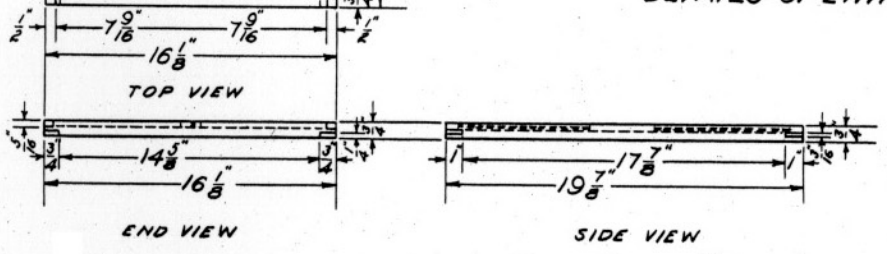


Scale: $3/16" = 1'-0"$

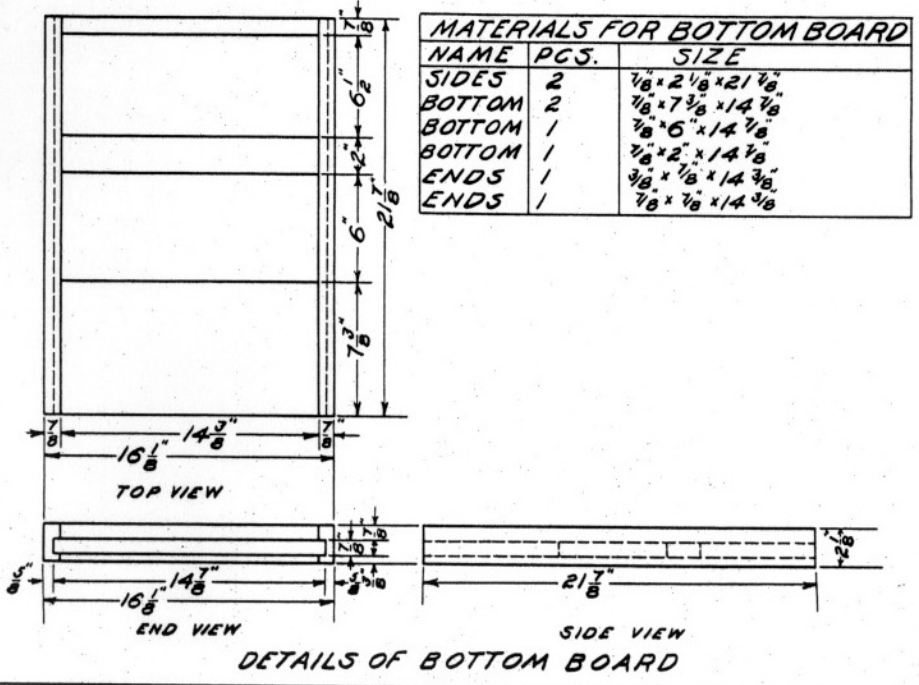
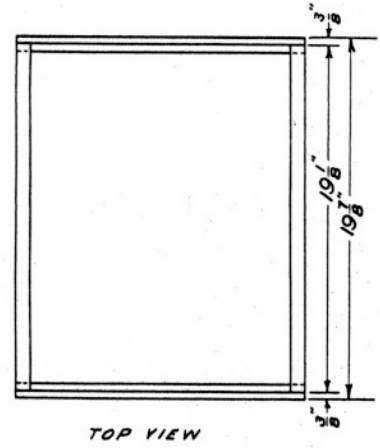
COOPERATIVE EXTENSION WORK IN
 AGRICULTURE AND HOME ECONOMICS
 DIVISION OF AGRICULTURAL ENGINEERING
 COLLEGE OF AGRICULTURE
 UNIVERSITY OF KENTUCKY LEXINGTON, KY.
 AND
 U.S. DEPT. OF AGRICULTURE COOPERATING
BEE HIVE
 DESIGNED BY DATE TRACED 1-10-38
 DRAWN BY K.R.N. APPROVED BY
 CHECKED BY U.S.N. SHEET 1 OF 2 SHEETS
 TRACED BY K.R.N. 750-1



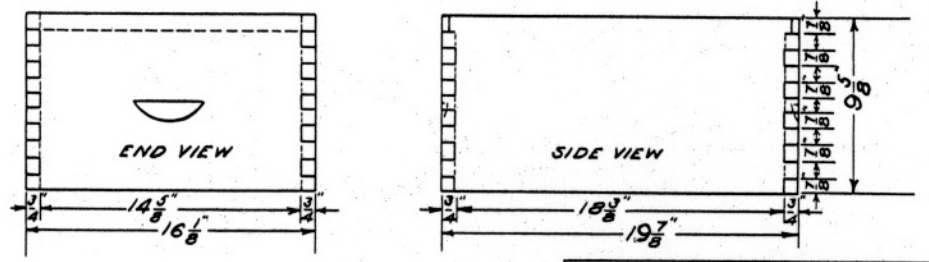
MATERIALS FOR HONEY BOARD		
NAME	PCS.	SIZE
ENDS	2	3/4" x 3/4" x 16 1/8"
SIDES	2	3/4" x 1" x 19 7/8"
TOP	1	5/16" x 7 9/16" x 18 3/8"
TOP	1	5/16" x 7 3/4" x 18 3/8"



MATERIALS FOR HIVE BODY		
NAME	PCS.	SIZE
ENDS	2	3/4" x 9 5/8" x 16 1/8"
SIDES	2	3/4" x 9 5/8" x 19 3/8"



MATERIALS FOR BOTTOM BOARD		
NAME	PCS.	SIZE
SIDES	2	1/8" x 2 1/8" x 21 7/8"
BOTTOM	2	1/8" x 7 3/8" x 14 3/8"
BOTTOM	1	1/8" x 6" x 14 3/8"
BOTTOM	1	1/8" x 2" x 14 3/8"
ENDS	1	3/8" x 1/8" x 14 3/8"
ENDS	1	1/8" x 1/8" x 14 3/8"



Scale: 3/16" = 1'-0"

COOPERATIVE EXTENSION WORK IN
 AGRICULTURE AND HOME ECONOMICS
 DIVISION OF AGRICULTURAL ENGINEERING
 COLLEGE OF AGRICULTURE
 UNIVERSITY OF KENTUCKY, LEXINGTON, KY.
 AND
 U.S. DEPT. OF AGRICULTURE COOPERATING
BEE HIVE

DESIGNED BY DATE TRACED 1-15-35
 DRAWN BY K.R.N. APPROVED BY
 CHECKED BY U.S.N. SHEETS 212 SHEETS
 TRACED BY K.R.N. FILE NO. 11750-1