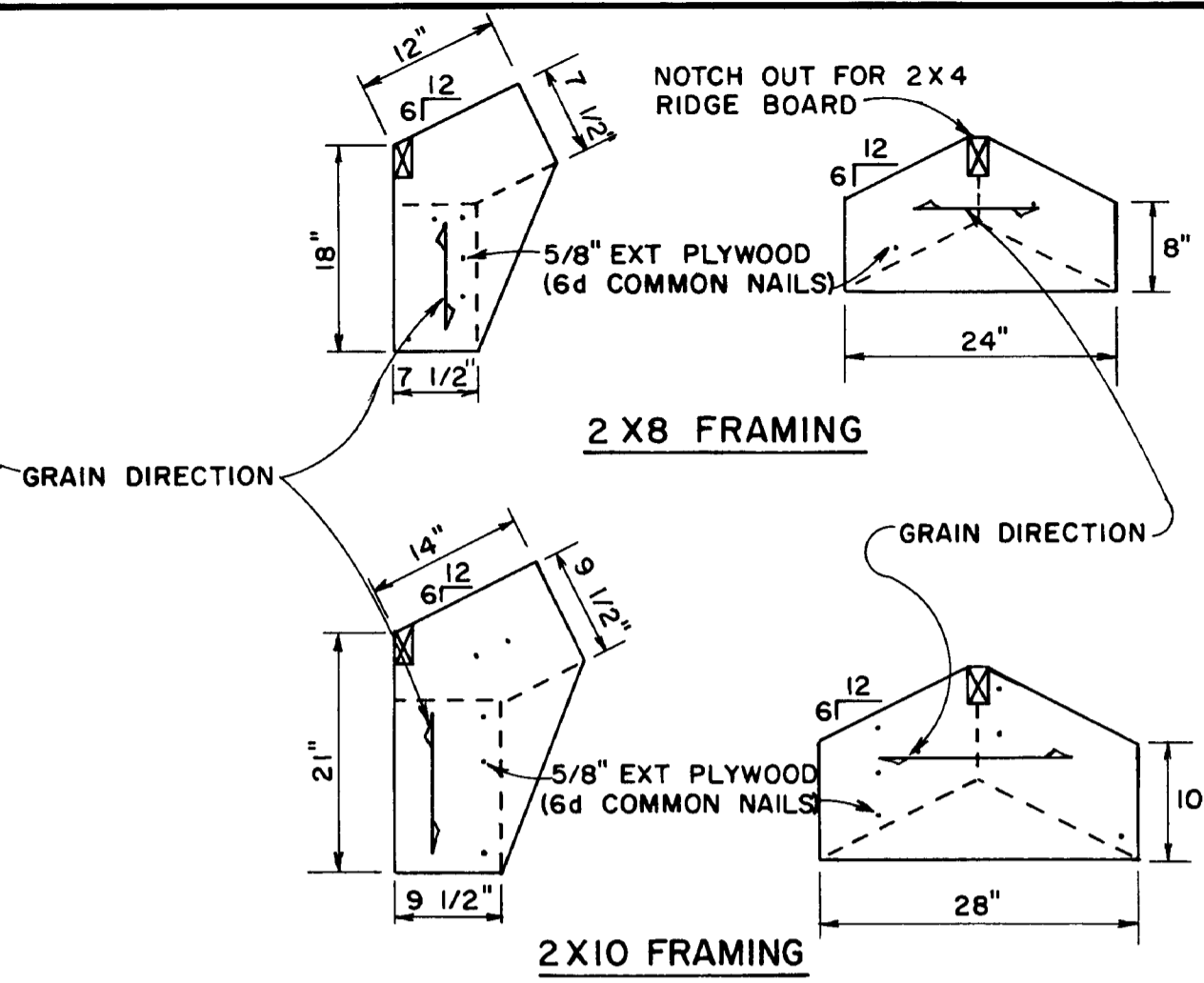
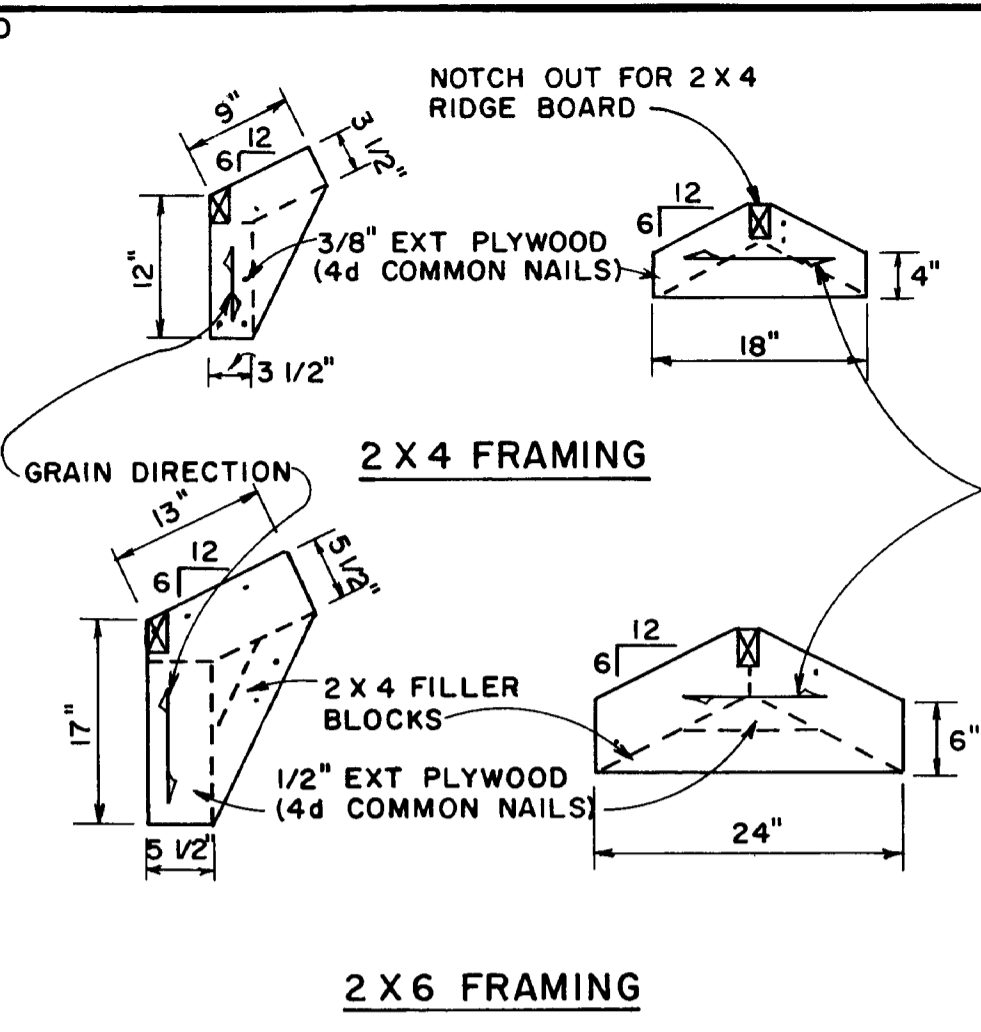
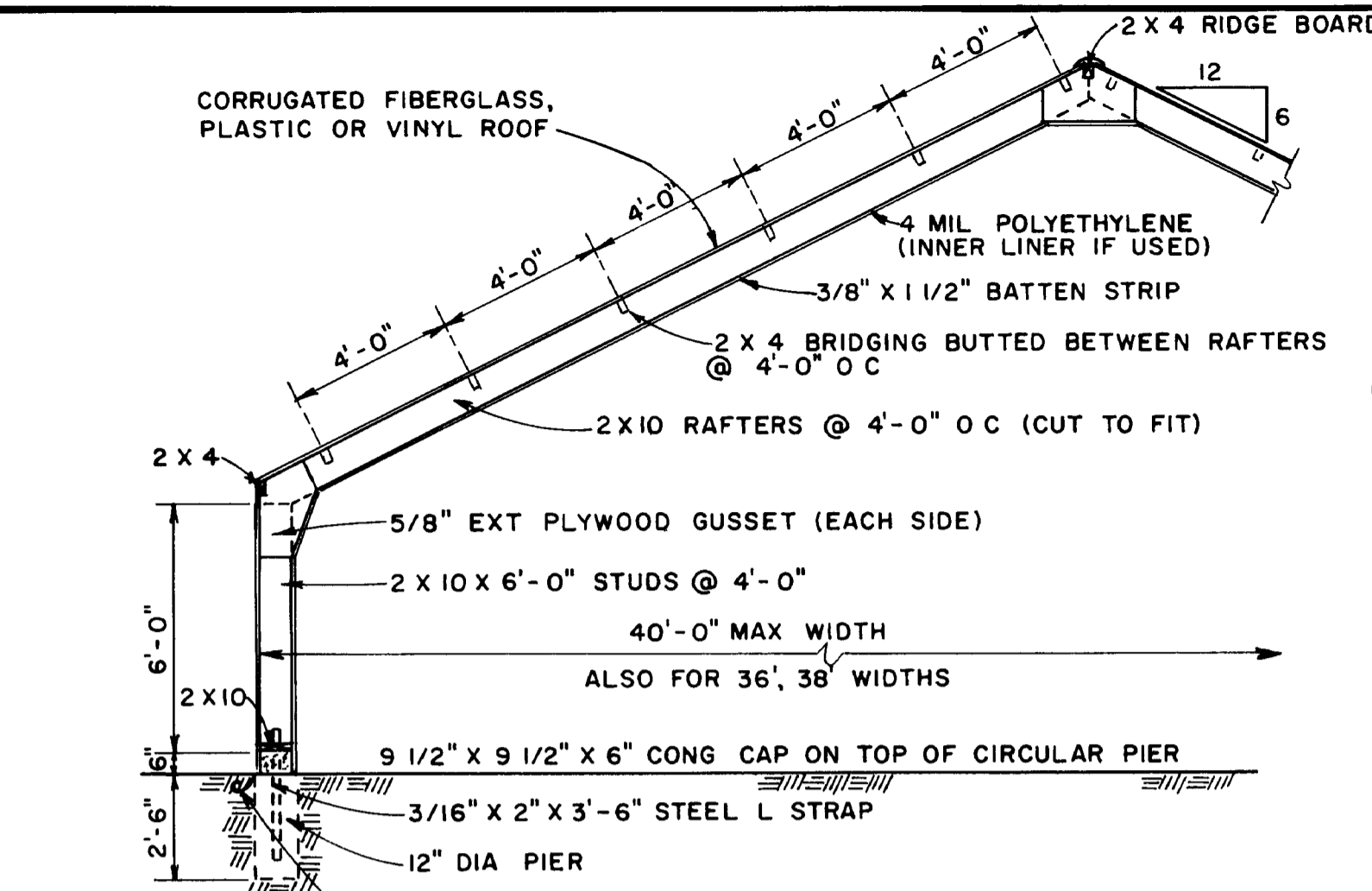


Important: Warranty Disclaimer for Plans

For the convenience of our clientele, this website makes available conceptual plans that can be helpful in planning buildings, facilities, or other structures. They were developed over many years by engineers at Land Grant universities through the former USDA Cooperative Farm Buildings Plan Exchange. *Regardless of the original intent, these are older plans that provide conceptual information only, and are not to be considered or used as construction plans.*

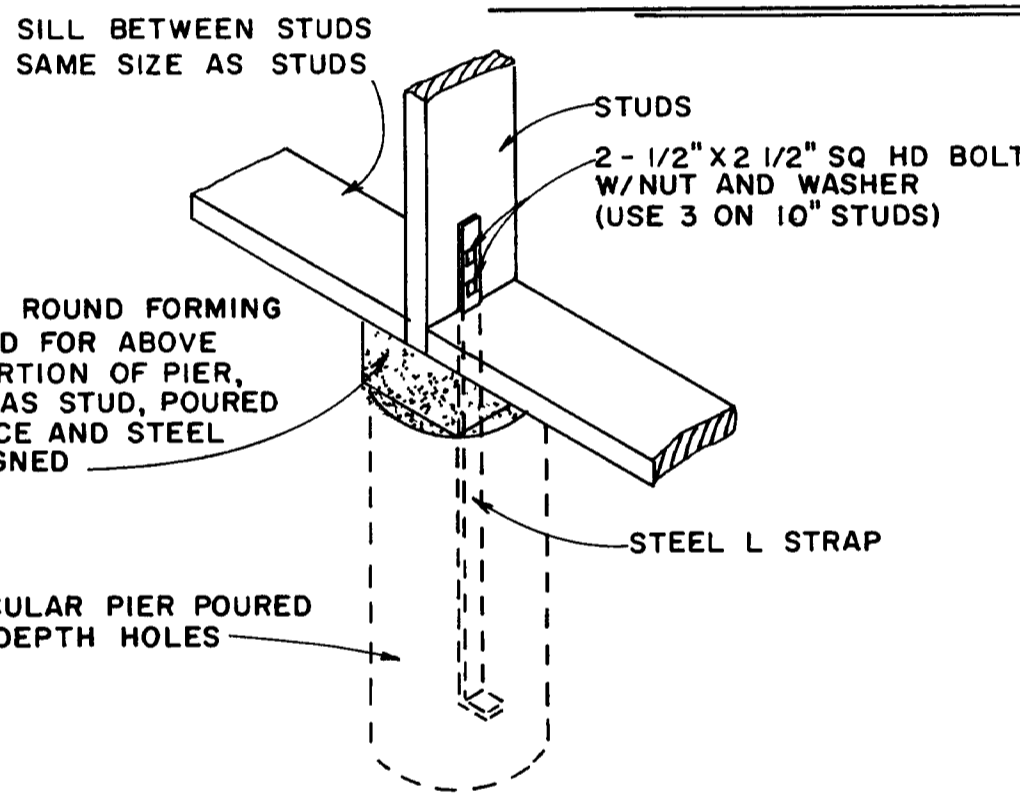
These plans do not claim to represent the most current technology or the most recent construction techniques, standards, or codes. For example, over the years there have been changes in the National Design Specifications for Wood Construction, changes in the strengths and types of building materials, and changes in fasteners, among other things. Those changes, along with variations in climate, building codes, and other factors, make it imperative that professional services be utilized for your specific project. Suggested services include, but are not limited to, structural design, assurance of compliance with codes and regulations, site selection, construction supervision, and provision for utilities, waste management, and access. *These plans do not replace the need for competent design assistance in developing safe, legal, and well-functioning agricultural buildings and systems.*

Neither the University of Kentucky, the Midwest Plan Service, the United States Department of Agriculture, nor any of the cooperating Land Grant universities, warranty these plans. They are for conceptual use only and are not for use as construction plans.

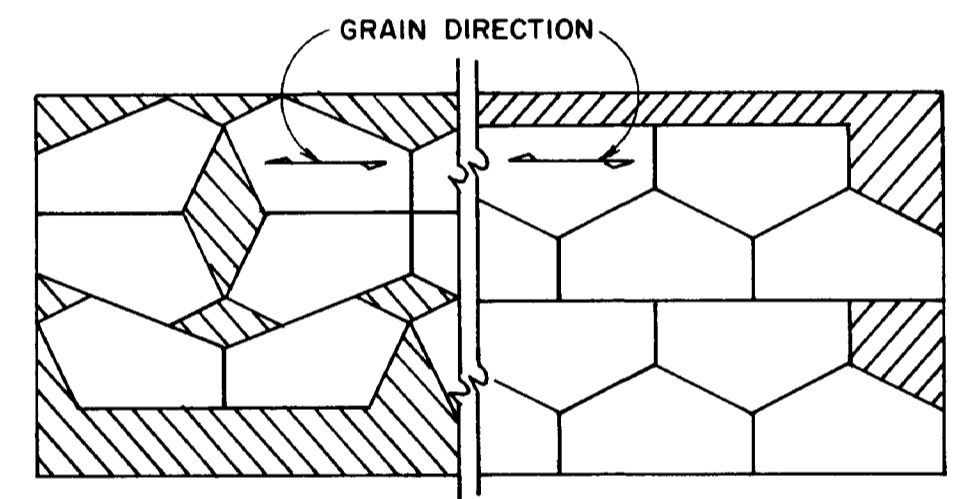


GUSSET DETAILS AND NAIL LOCATION

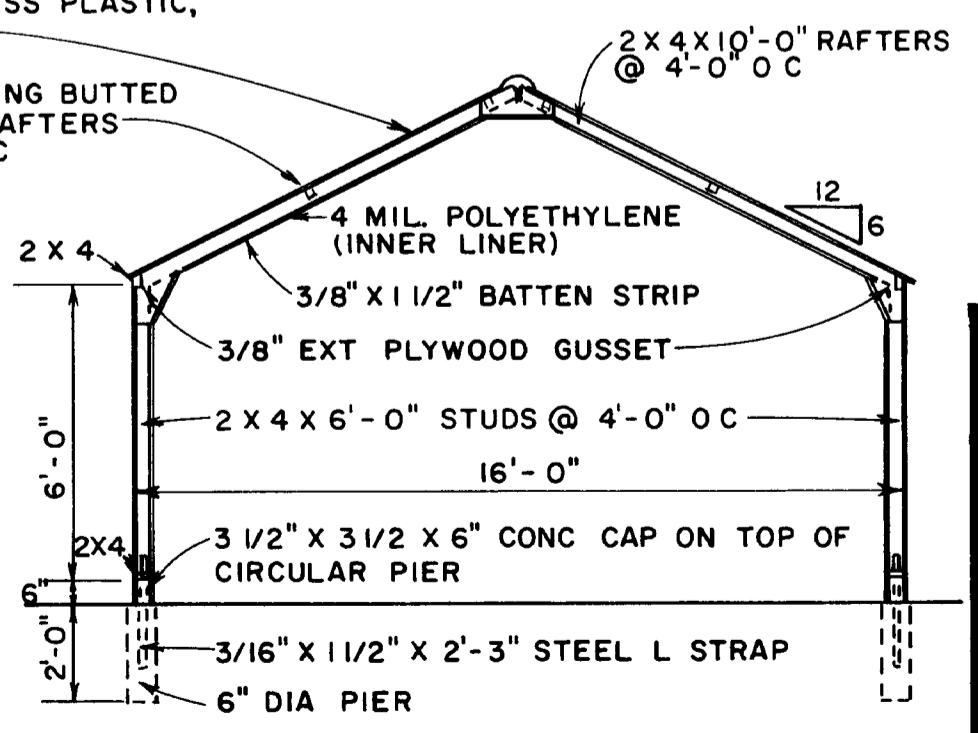
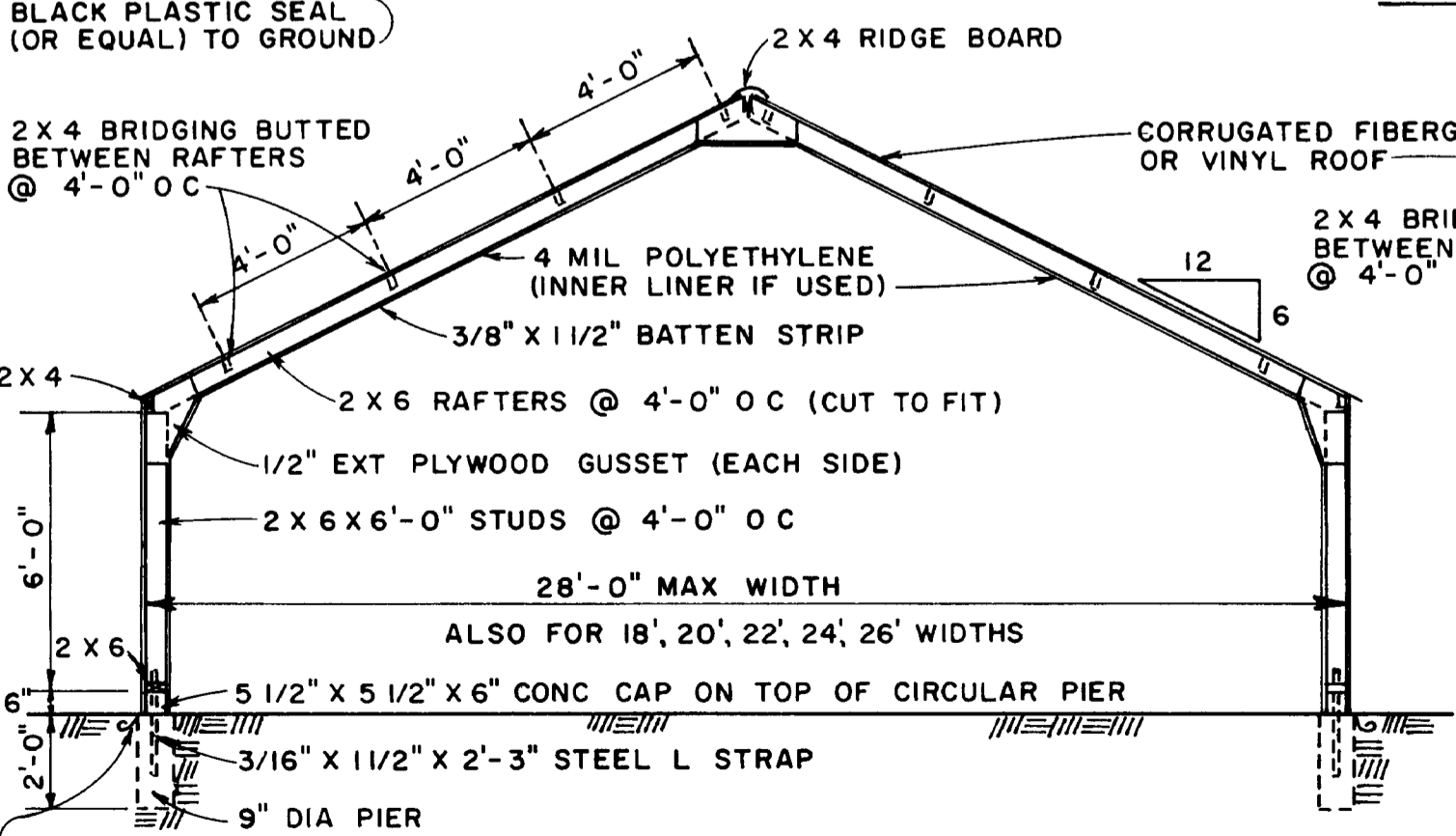
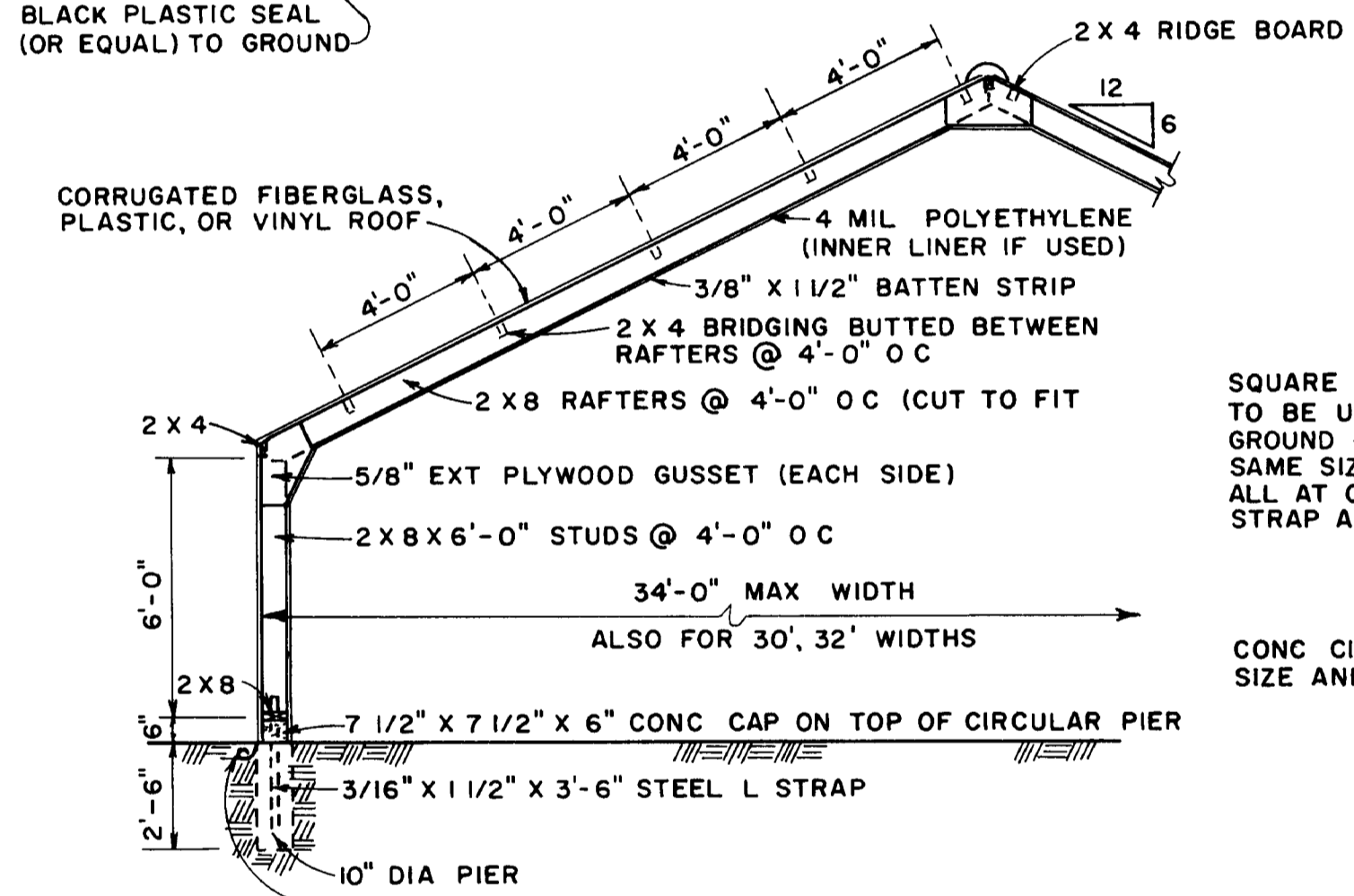
SCALE 3/4" = 1'-0"



PIER AND STRAP DETAIL



TYPICAL GUSSET CUTTING DIAGRAM

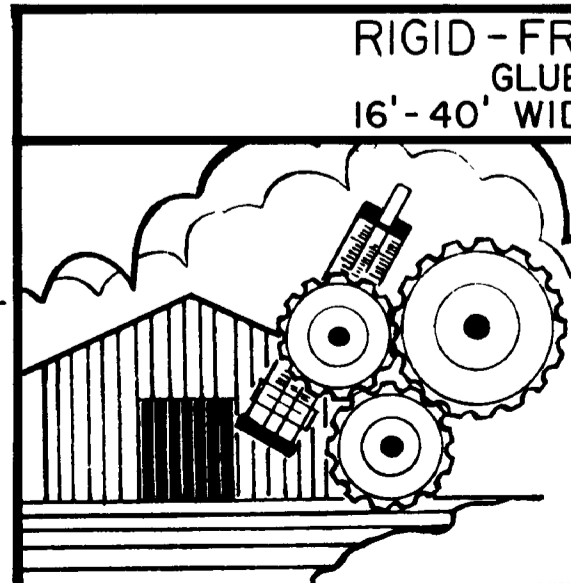


CROSS SECTIONS FOR 4'-0" O C SPACING

SCALE 1/4" = 1'-0"

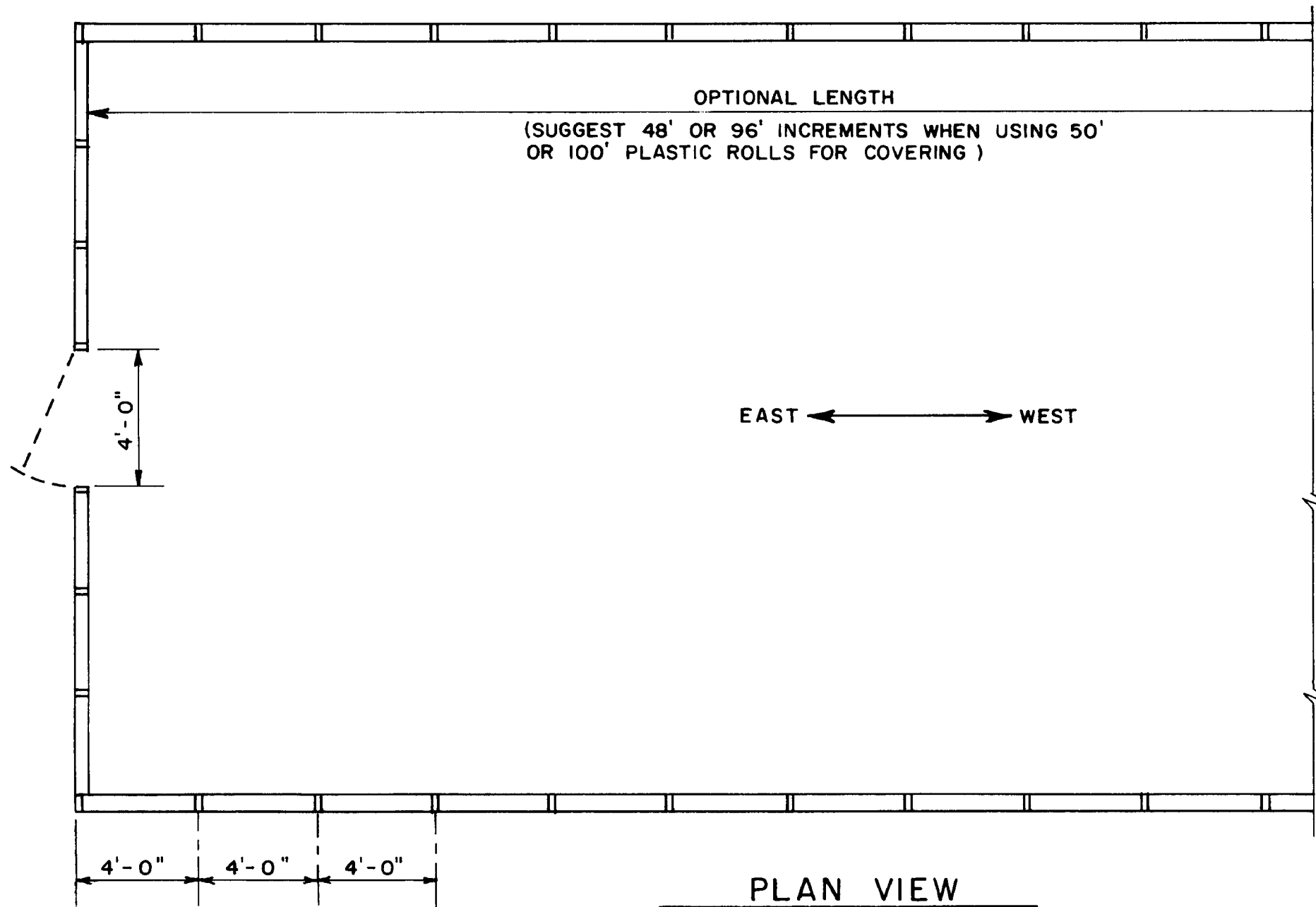
NOTES

- 1 LUMBER SHALL BE KILN-DRIED, CONSTR OR STD D FIR, NO 1 OR 2 S Y PINE, OR EQUAL ANY MINOR DEFECTS SHOULD BE LOCATED IN UPPER 2/3 OF RAFTER OR LOWER 1/2 OF STUD
- 2 PLYWOOD SHALL BE EXTERIOR A-C GRADE, THICKNESS AS SHOWN
- 3 FOR LONG LIFE, LUMBER AND PLYWOOD SHOULD BE PRESSURE TREATED WITH AN APPROPRIATE SALT-TYPE PRESERVATIVE (SEPARATE SPECIFICATIONS AVAILABLE)
- 4 USE AT LEAST SIZE AND NUMBER OF NAILS SHOWN TO ENSURE ADEQUATE STRUCTURE STRENGTH
- 5 APPLY TWO COATS EXTERIOR WHILE PAINT (BLISTER RESISTANT TYPE) AFTER ASSEMBLY FOR LIGHT REFLECTION AND APPEARANCE

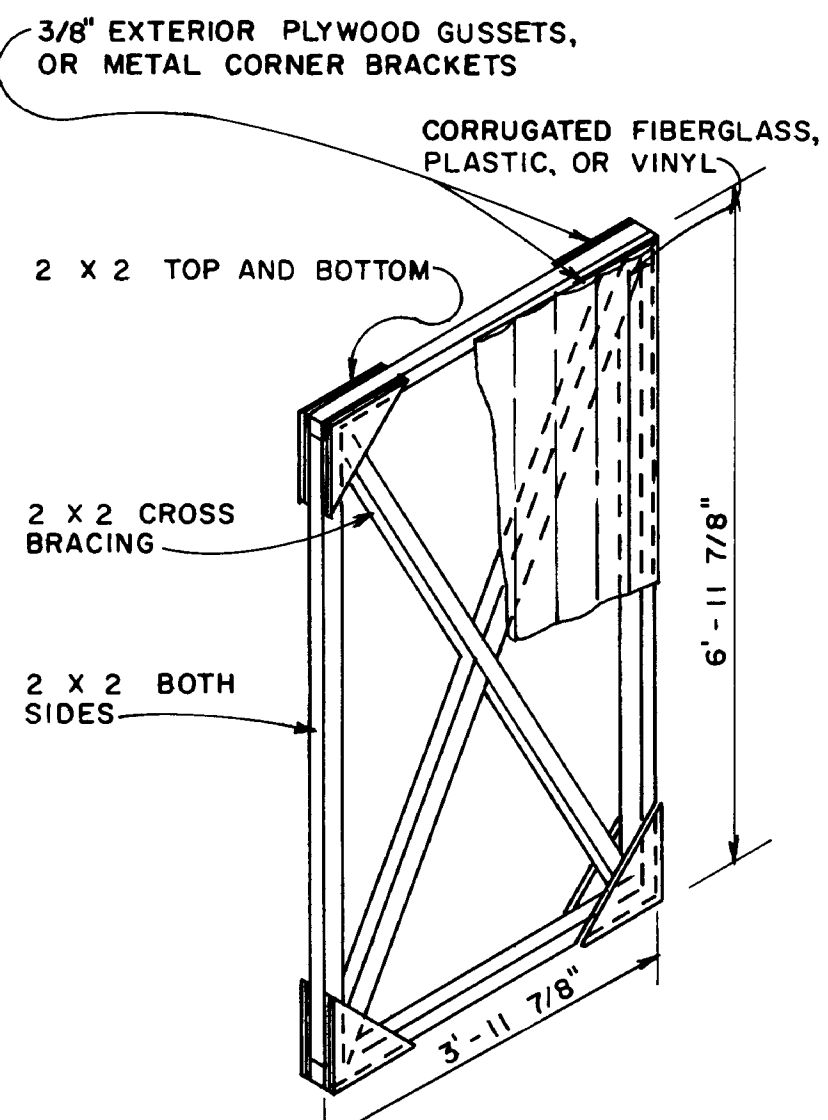
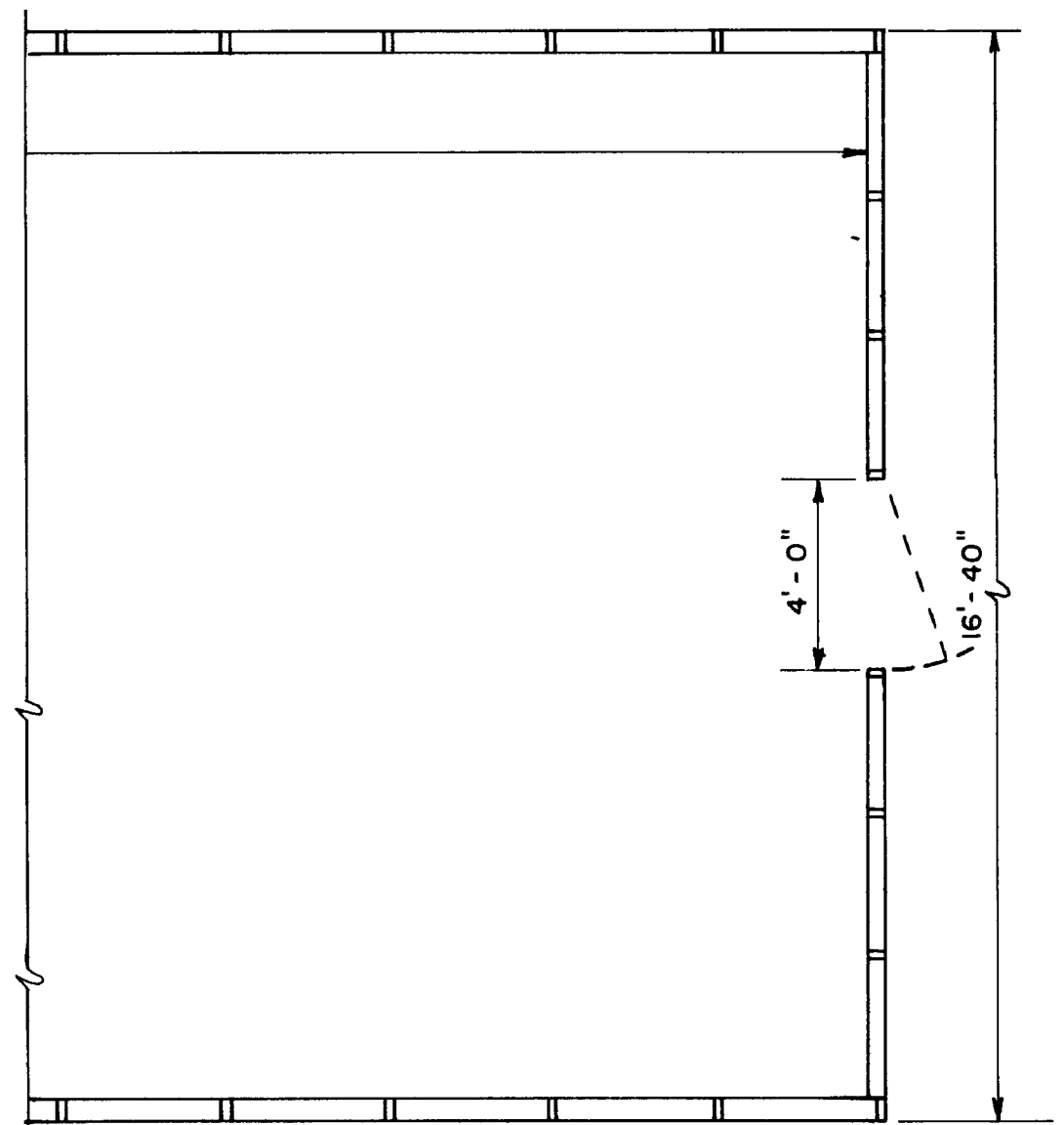


**RIGID-FRAME GREENHOUSE
GLUE-NAIL GUSSETS
16'-40' WIDE - 4' FRAME SPACING**

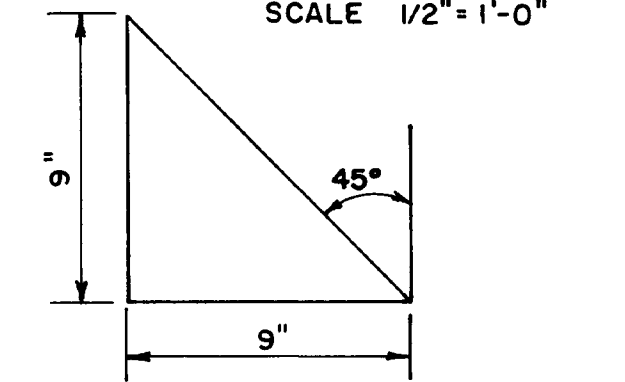
| | |
|---|-----------------------|
| COOPERATIVE EXTENSION SERVICE AGRICULTURE AND HOME ECONOMICS DEPARTMENT OF AGRICULTURAL ENGINEERING COLLEGE OF AGRICULTURE UNIVERSITY OF KENTUCKY AND U S DEPARTMENT OF AGRICULTURE COOPERATING | |
| DESIGNED BY J N WALKER | SHEET 1 OF 2 |
| CHECKED BY G A DUNCAN | PLAN NUMBER |
| DRAWN BY S ELLIOTT | KY. II. 771-IA |
| DATE 4-79 | |
| REVISIONS 7-86 | |



PLAN VIEW
SCALE 1/4"=1'-0"



DOOR DETAIL
SCALE 1/2"=1'-0"

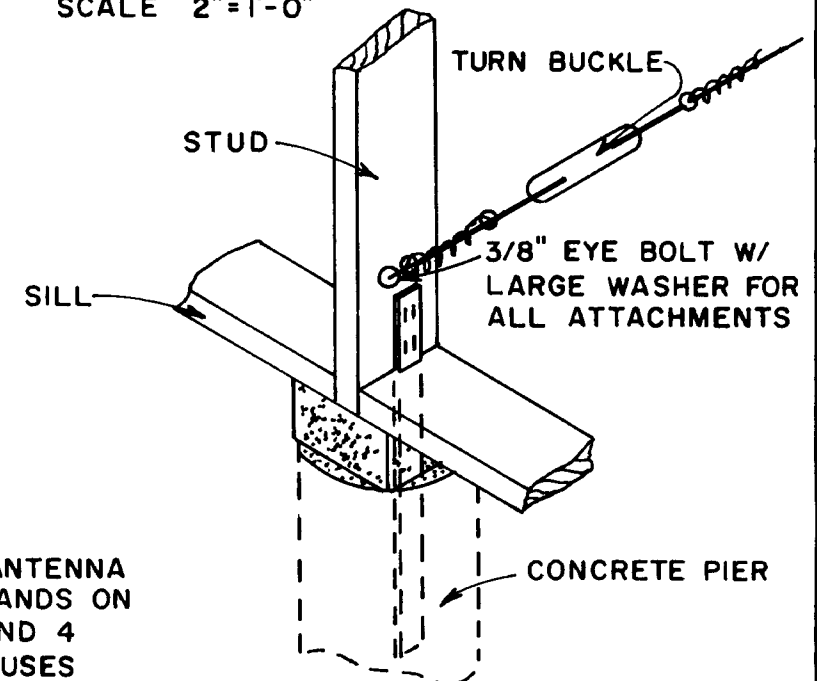
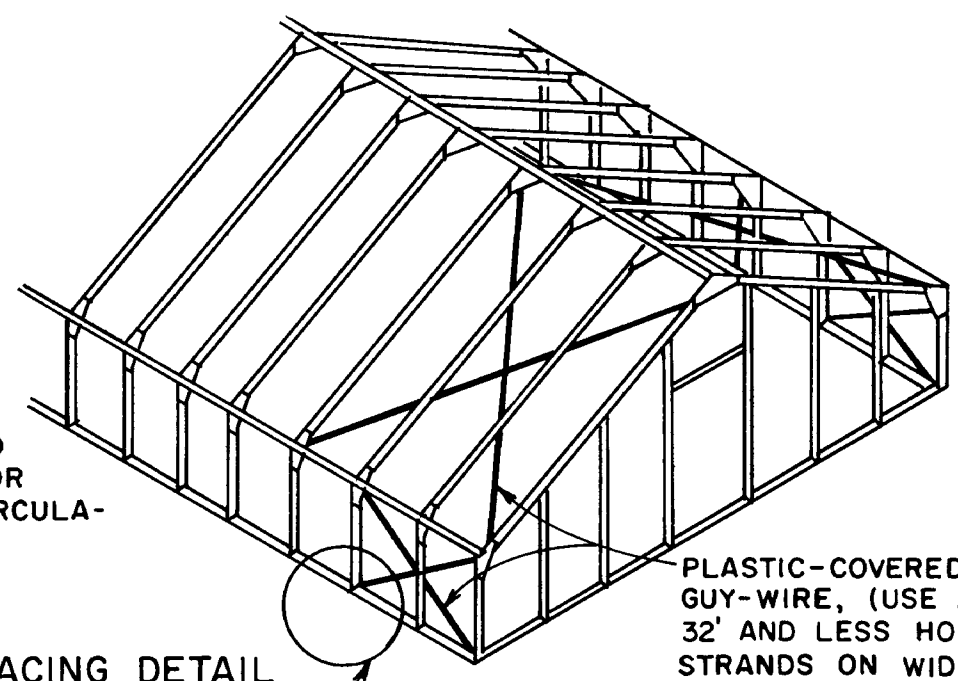


DOOR GUSSET DETAIL
SCALE 2"=1'-0"

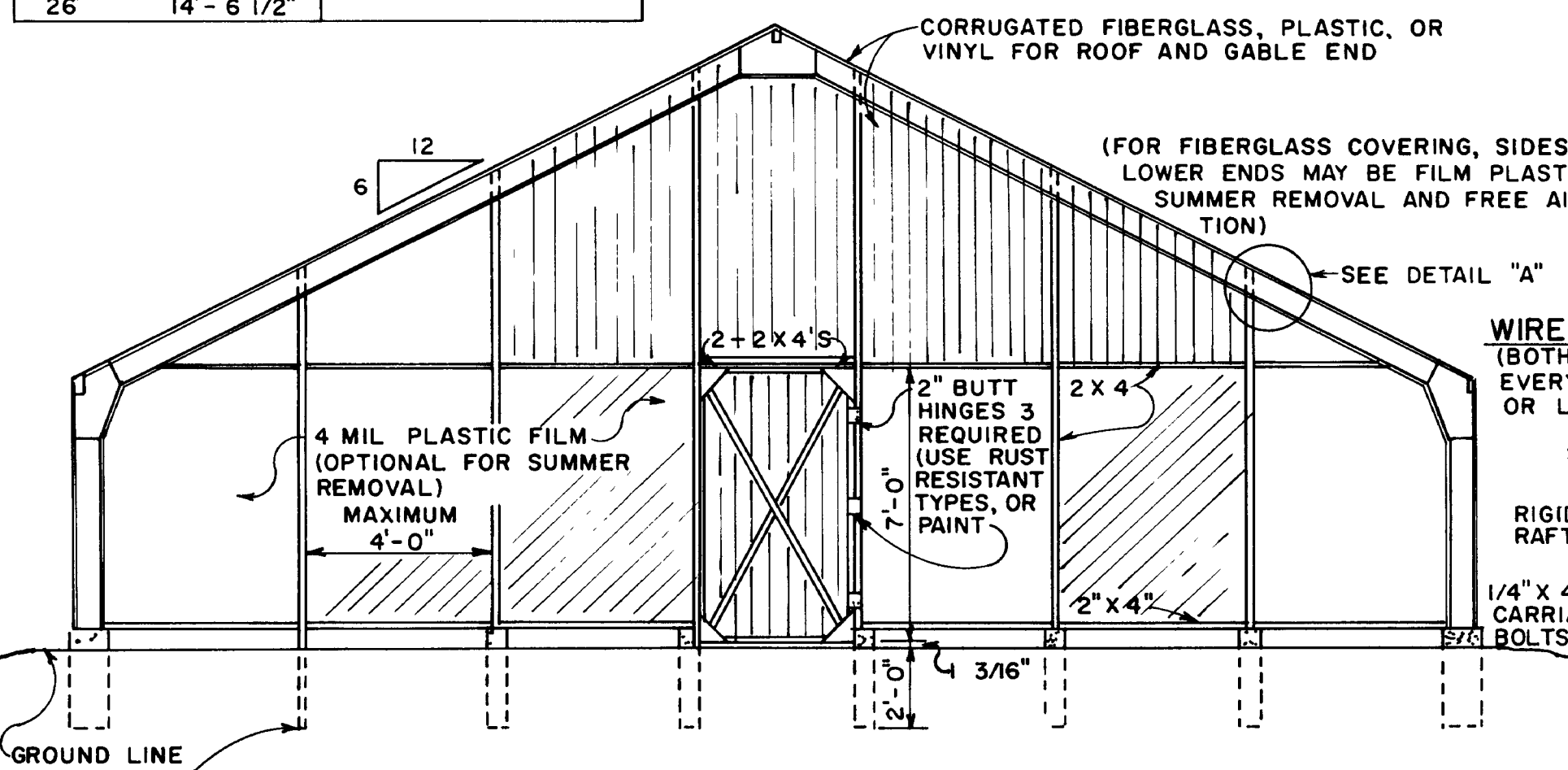
NOTE
SEE PLAN KY II 811-7 OR AEW-7 FOR PLANS OF HEATING AND VENTILATING SYSTEMS

| RAFTER LENGTH VS WIDTH | | | |
|------------------------|------------|----------|------------|
| WIDTH, W | LENGTH, L | WIDTH, W | LENGTH, L |
| 12' | 6'-8 1/2" | 28' | 15'-8" |
| 14' | 7'-10" | 30' | 16'-9 3/8" |
| 16' | 9'-0" | 32' | 17'-11" |
| 18' | 10'-1" | 34' | 19'-0" |
| 20' | 11'-2" | 36' | 20'-1 3/4" |
| 22' | 12'-3 1/2" | 38' | 21'-3" |
| 24' | 13'-5" | 39' | 21'-9 3/4" |
| 26' | 14'-6 1/2" | | |

| WIDTHS FOR STANDARD RAFTER LENGTHS | | | |
|------------------------------------|--------|------------|--------|
| WIDTH | LENGTH | WIDTH | LENGTH |
| 10'-8 3/4" | 6' | 28'-7 1/4" | 16' |
| 14'-3 1/2" | 8' | 32'-2 1/4" | 18' |
| 17'-10 1/2" | 10' | 35'-9" | 20' |
| 21'-5 1/2" | 12' | 39'-4" | 22' |
| 25'-0" | 14' | | |

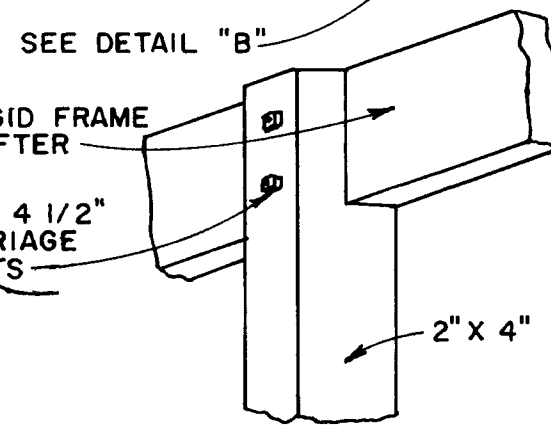


DETAIL "B"



END ELEVATION
SCALE 1/4"=1'-0"

WIRE BRACING DETAIL
(BOTH ENDS OF HOUSE AND EVERY 50' FOR HOUSES 100' OR LONGER)



DETAIL "A"
SCALE 1 1/2"=1'-0"

RIGID-FRAME GREENHOUSE
GLUE-NAIL GUSSET
16'-40' WIDE - 4' FRAME SPACING

COOPERATIVE EXTENSION SERVICE
AGRICULTURE AND HOME ECONOMICS
DEPARTMENT OF AGRICULTURAL ENGINEERING
COLLEGE OF AGRICULTURE
UNIVERSITY OF KENTUCKY
AND
U.S. DEPARTMENT OF AGRICULTURE COOPERATING

| | |
|----------------------|-----------------------|
| DESIGNED BY J WALKER | SHEET 2 OF 2 |
| CHECKED BY G J - GAD | PLAN NUMBER |
| DRAWN BY S ELLIOTT | KY. II. 771-1A |
| DATE 4-74 | REVISIONS 7-86 |