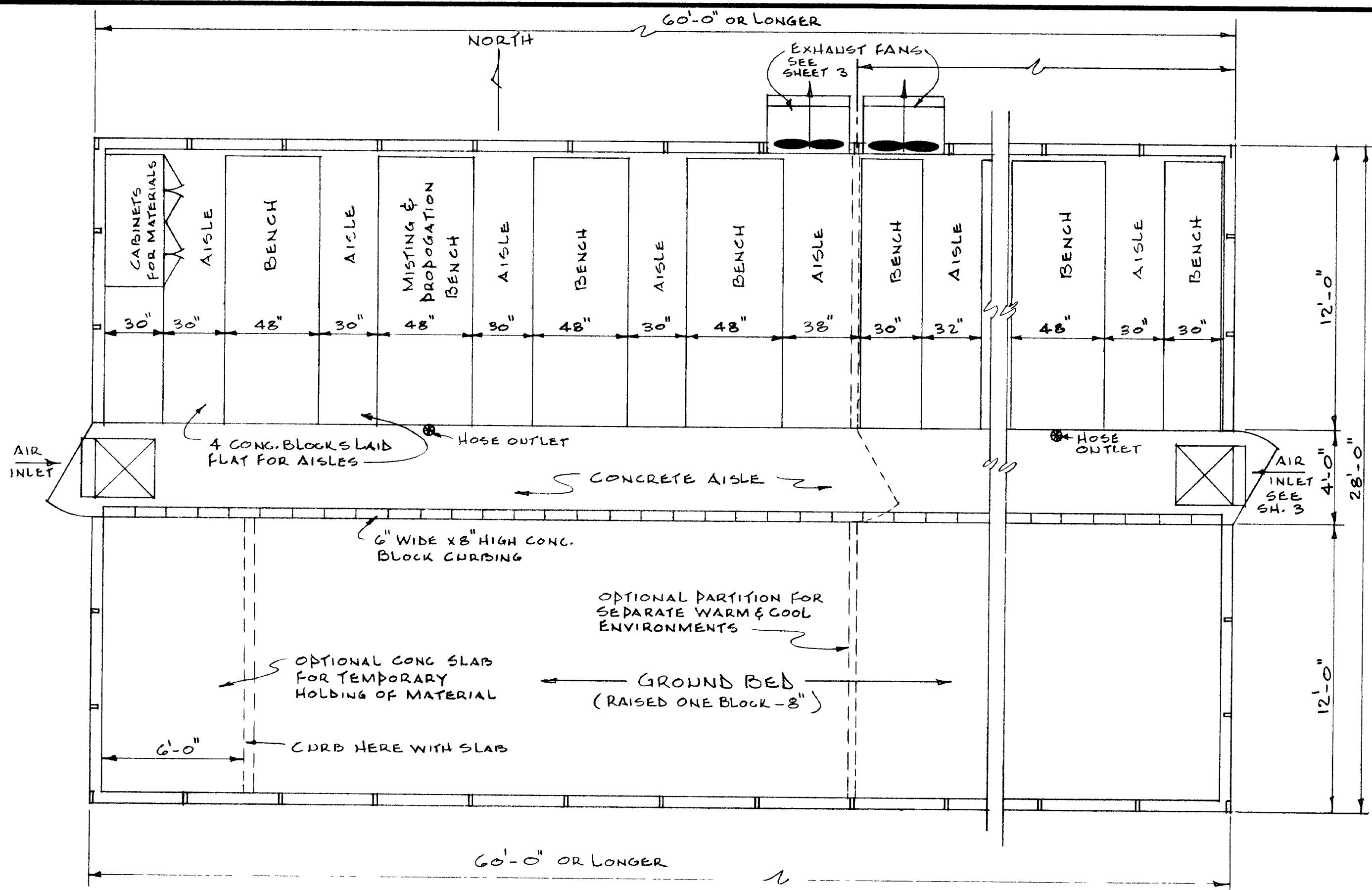


Important: Warranty Disclaimer for Plans

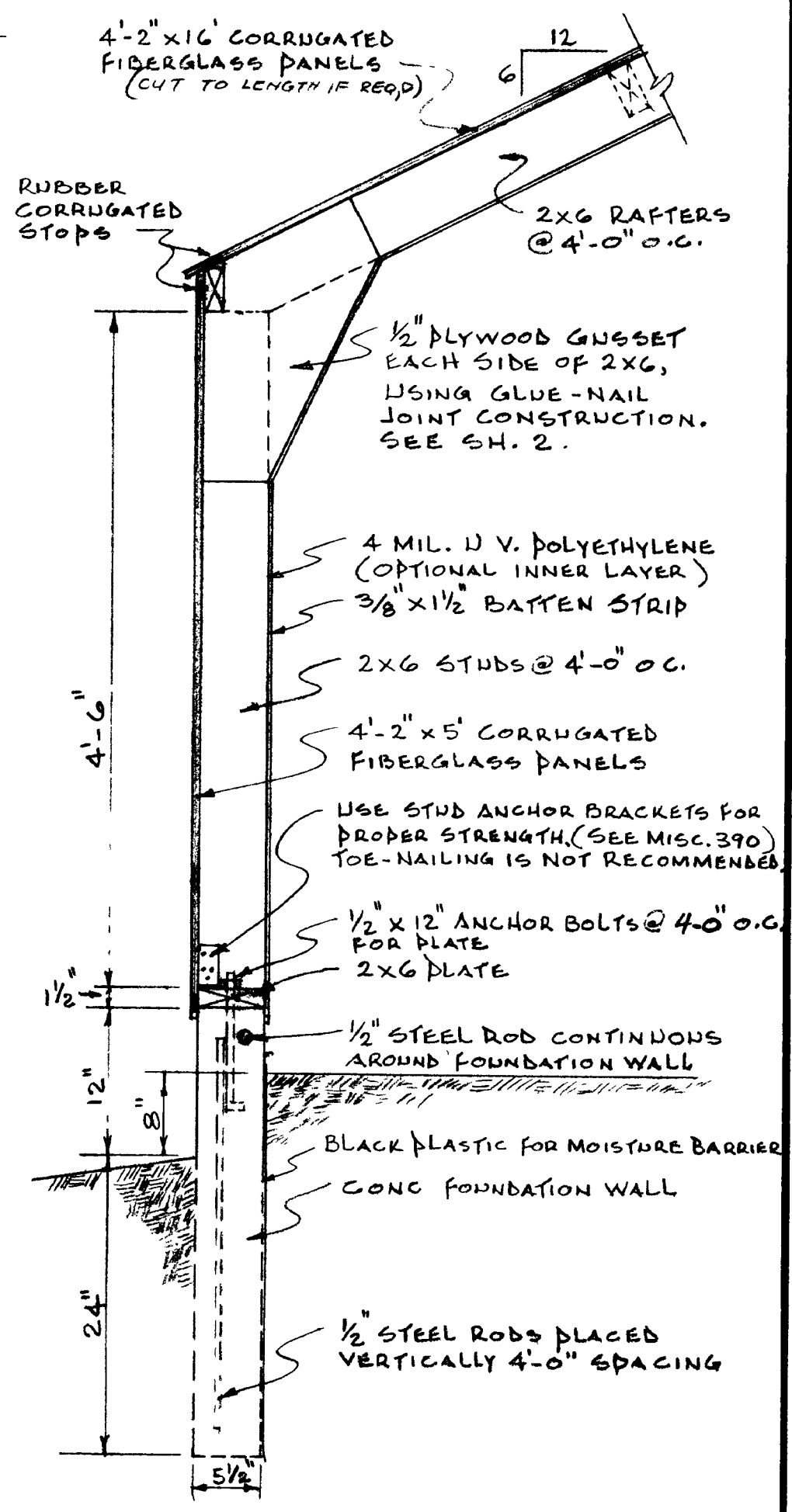
For the convenience of our clientele, this website makes available conceptual plans that can be helpful in planning buildings, facilities, or other structures. They were developed over many years by engineers at Land Grant universities through the former USDA Cooperative Farm Buildings Plan Exchange. *Regardless of the original intent, these are older plans that provide conceptual information only, and are not to be considered or used as construction plans.*

These plans do not claim to represent the most current technology or the most recent construction techniques, standards, or codes. For example, over the years there have been changes in the National Design Specifications for Wood Construction, changes in the strengths and types of building materials, and changes in fasteners, among other things. Those changes, along with variations in climate, building codes, and other factors, make it imperative that professional services be utilized for your specific project. Suggested services include, but are not limited to, structural design, assurance of compliance with codes and regulations, site selection, construction supervision, and provision for utilities, waste management, and access. *These plans do not replace the need for competent design assistance in developing safe, legal, and well-functioning agricultural buildings and systems.*

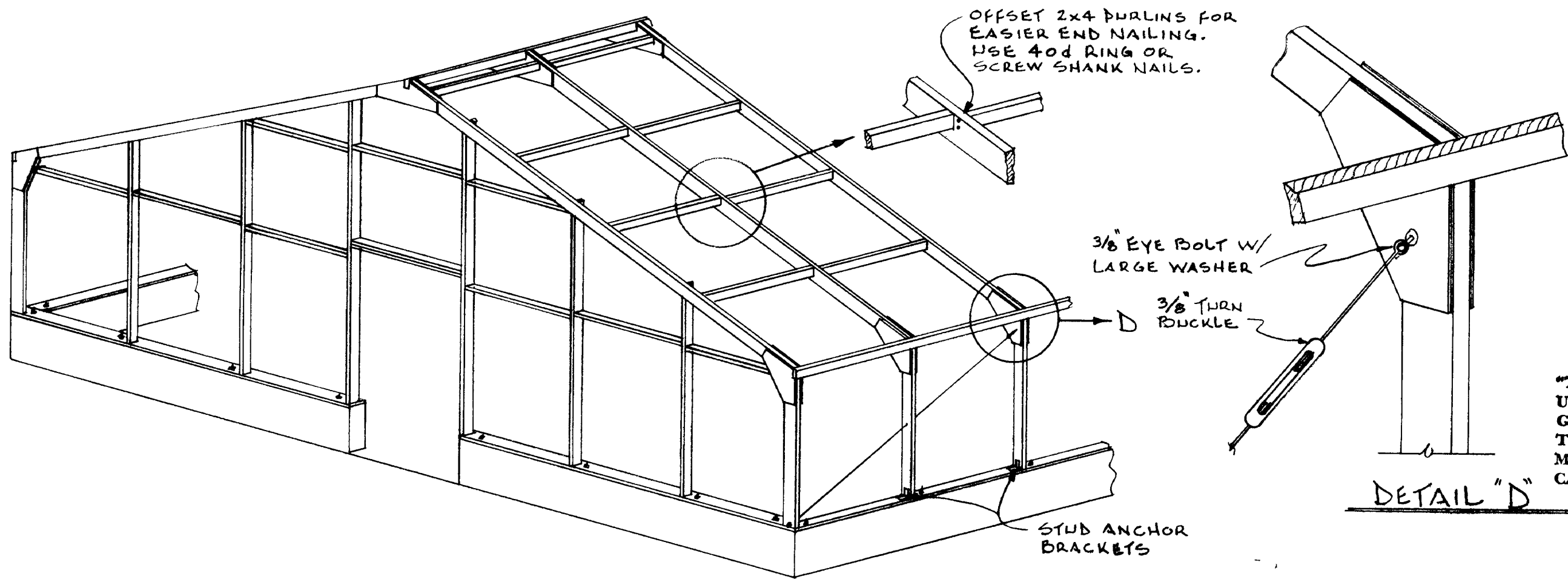
Neither the University of Kentucky, the Midwest Plan Service, the United States Department of Agriculture, nor any of the cooperating Land Grant universities, warranty these plans. They are for conceptual use only and are not for use as construction plans.



FLOOR PLAN SCALE: 1/4" = 1'-0"



WALL SECTION SCALE: 1" = 1'-0"



WIRE BRACING DETAIL

DETAIL "D"

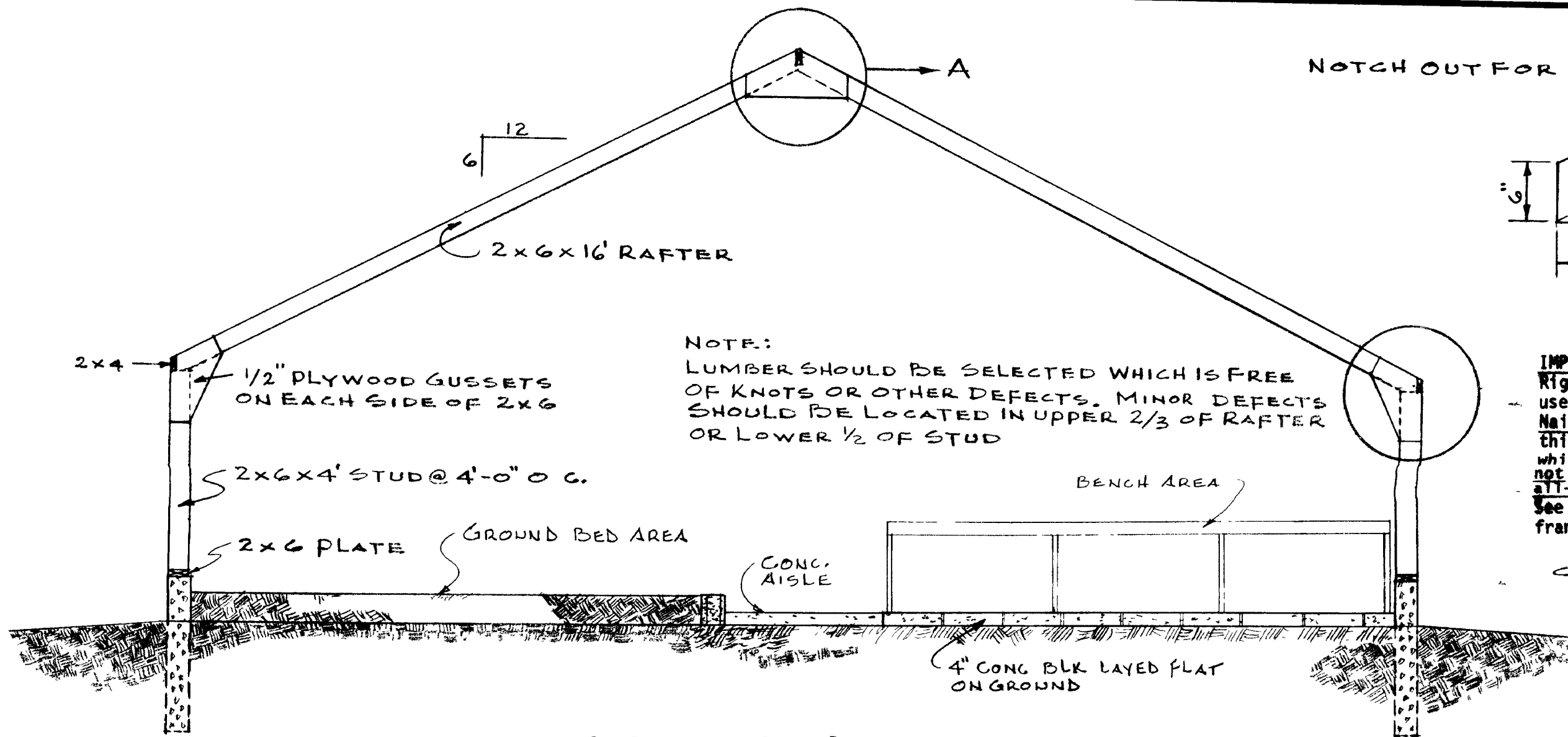
"THESE PLANS ARE FOR USE AS A CONSTRUCTION GUIDE. IF A CONSTRUCTION CONTRACT IS TO BE MADE, WRITTEN SPECIFICATIONS ARE NEEDED."

IMPORTANT: See UK publications on GREENHOUSES for further details on this greenhouse construction and operation.

COOPERATIVE EXTENSION WORK IN AGRICULTURE AND HOME ECONOMICS DEPARTMENT OF AGRICULTURAL ENGINEERING COLLEGE OF AGRICULTURE UNIVERSITY OF KENTUCKY & U.S. DEPARTMENT OF AGRICULTURE COOPERATING

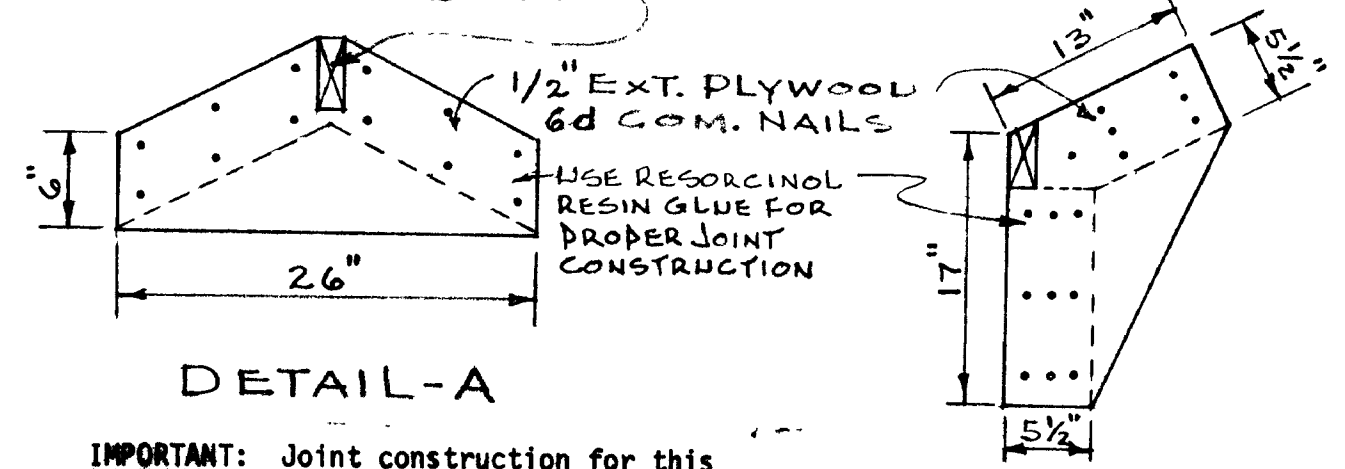
TEACHING GREENHOUSE

Designed By J.N.W.	Sheet 1 of 3
Checked By G.A.D.	Plan Number.
Drawn By DE PLASTER	DATE REV. AUG. 1971
	KY. 11.8890-1A



CROSS SECTION
SCALE: 3/8" = 1'-0"

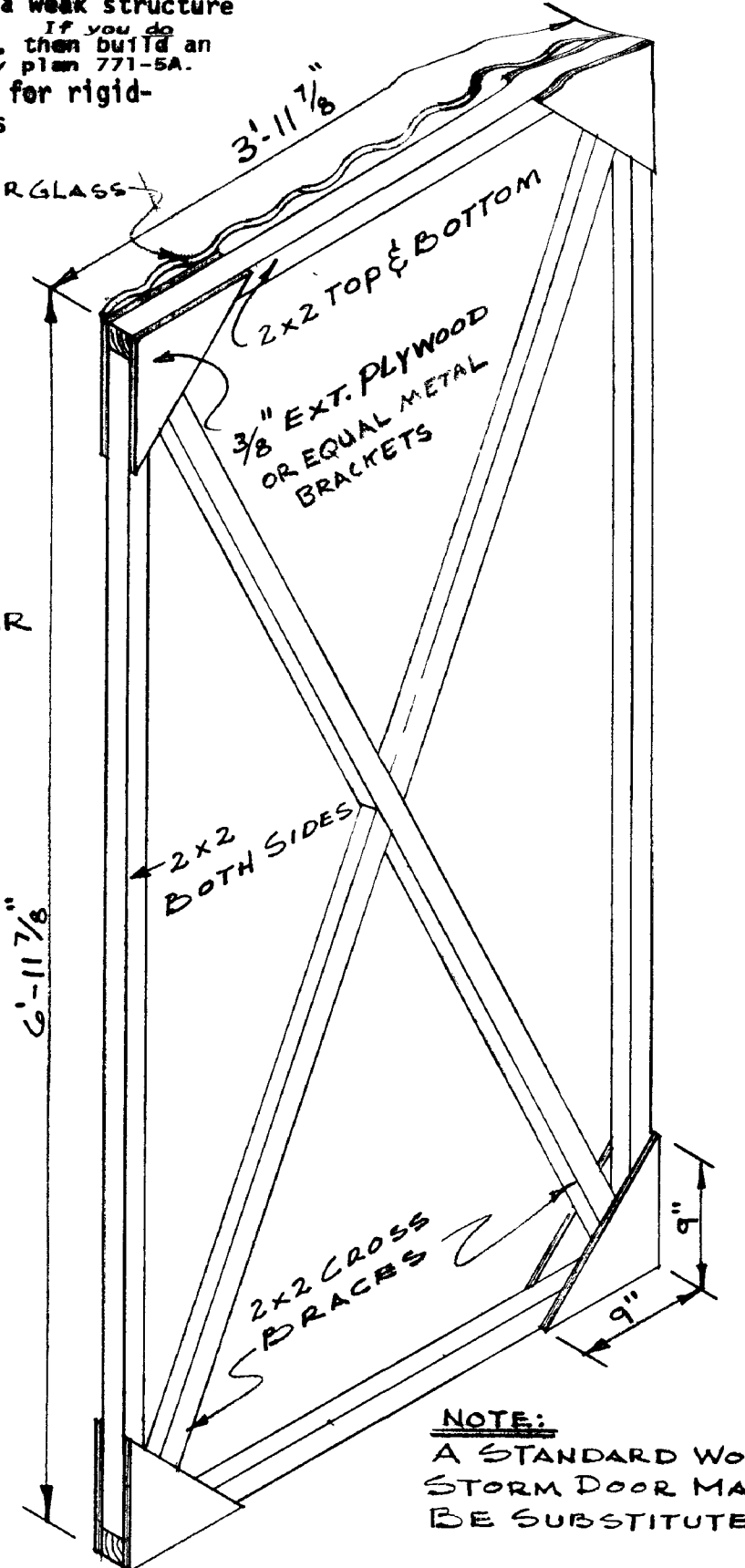
NOTCH OUT FOR 2x4 RIDGE BOARD



DETAIL-A

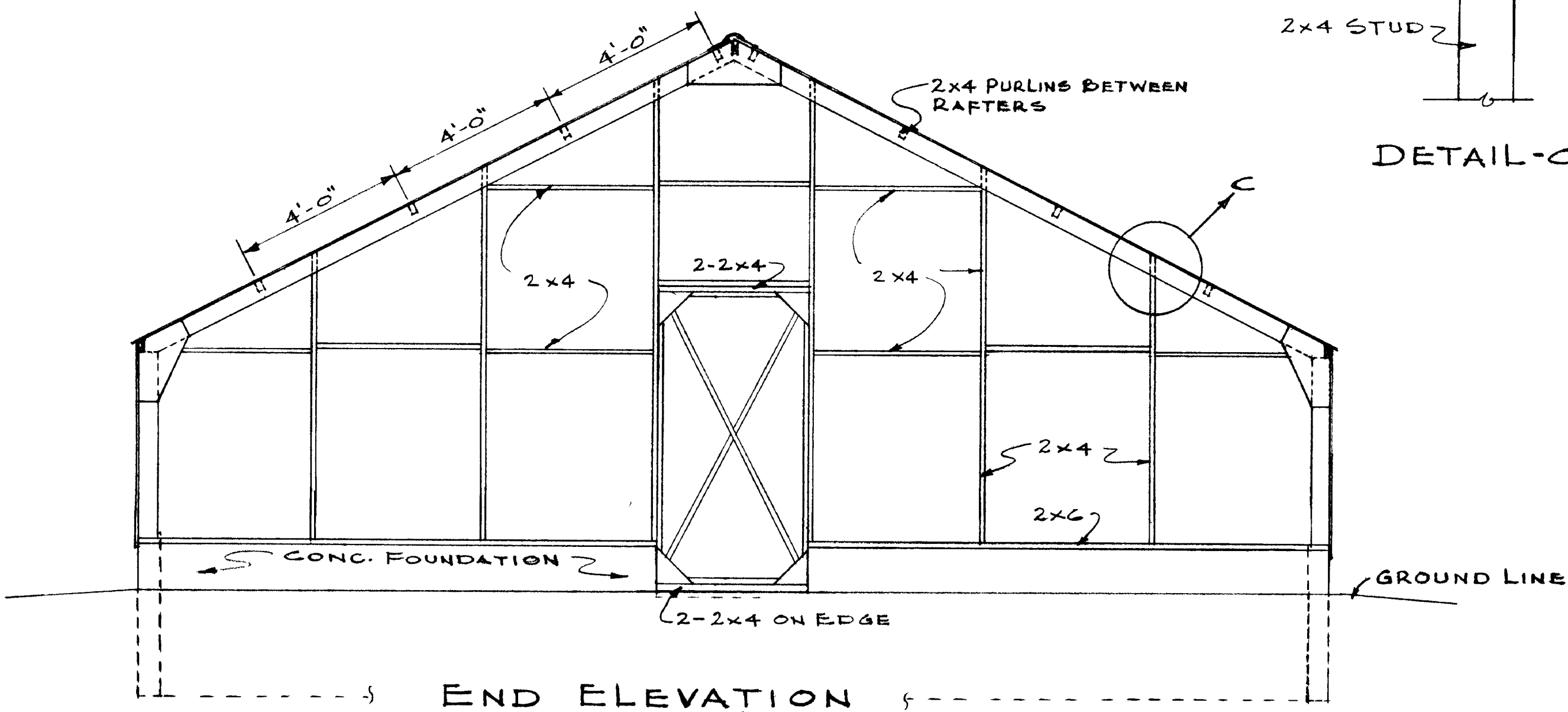
IMPORTANT: Joint construction for this Rigid-Frame structure is based on the use of Resorcinol Resin Glue for Glue-Nail gusset attachment. Failure to use this glue will result in a weak structure which may fail under load. If you do not plan to use this glue, then build an all-nailed gusset joint by plan 771-5A. See publication AEN-15 for rigid-frame construction details.

DETAIL-B



DOOR DETAIL
SCALE: 1" = 1'-0"

NOTE:
A STANDARD WOOD STORM DOOR MAY BE SUBSTITUTED



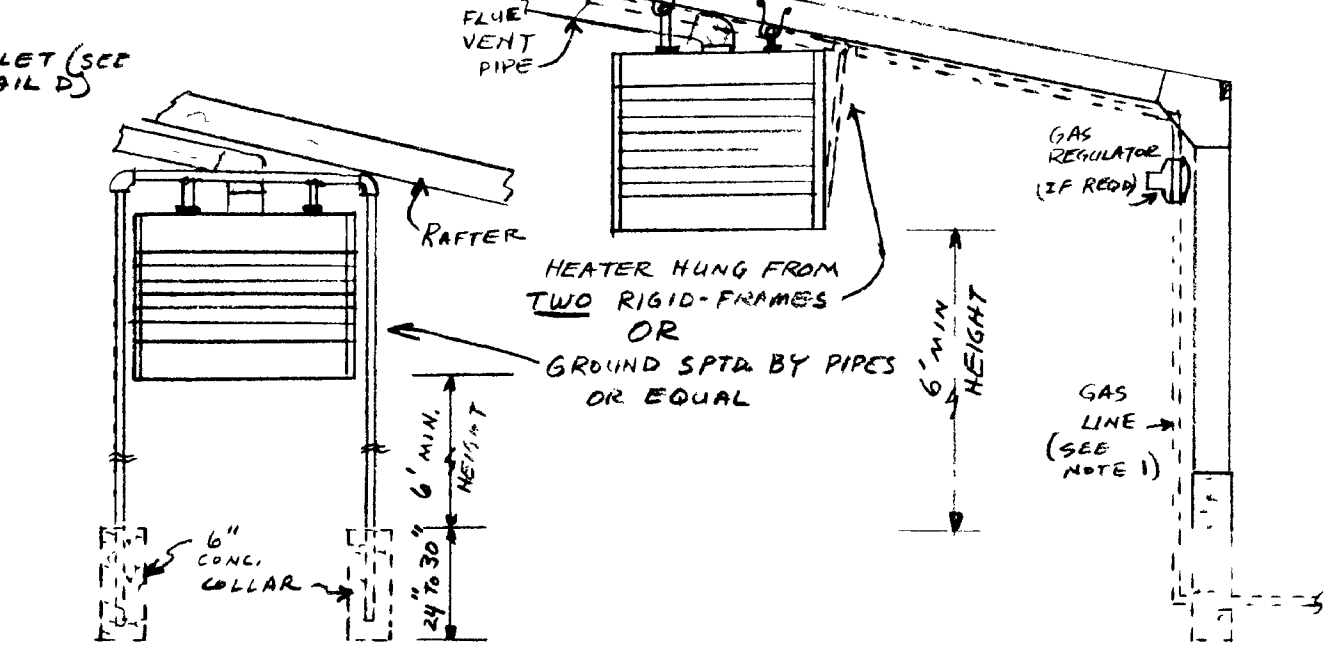
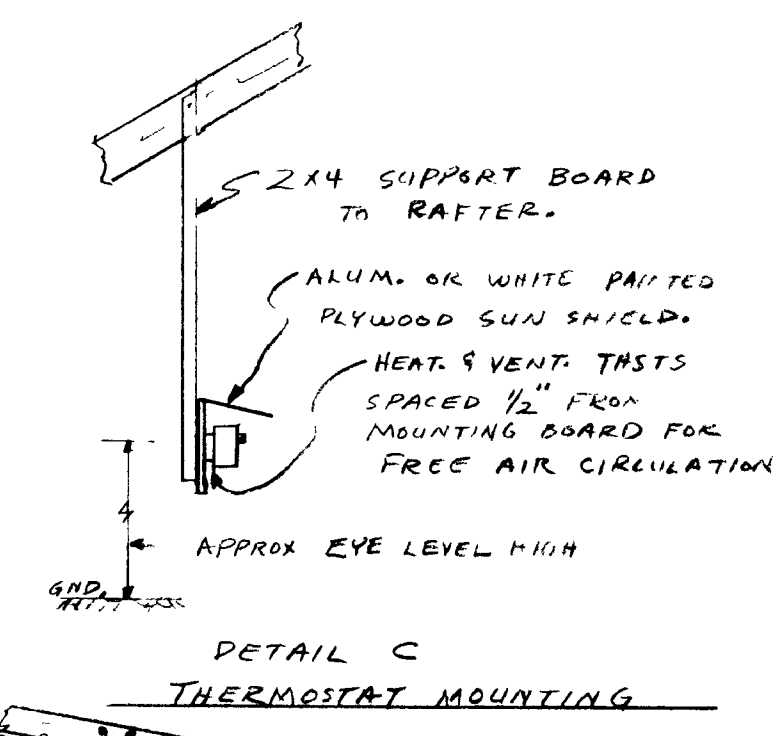
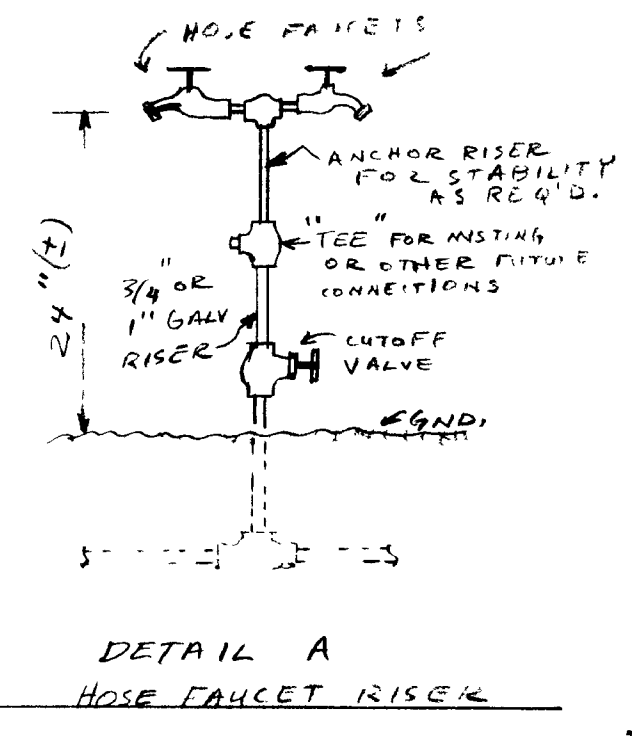
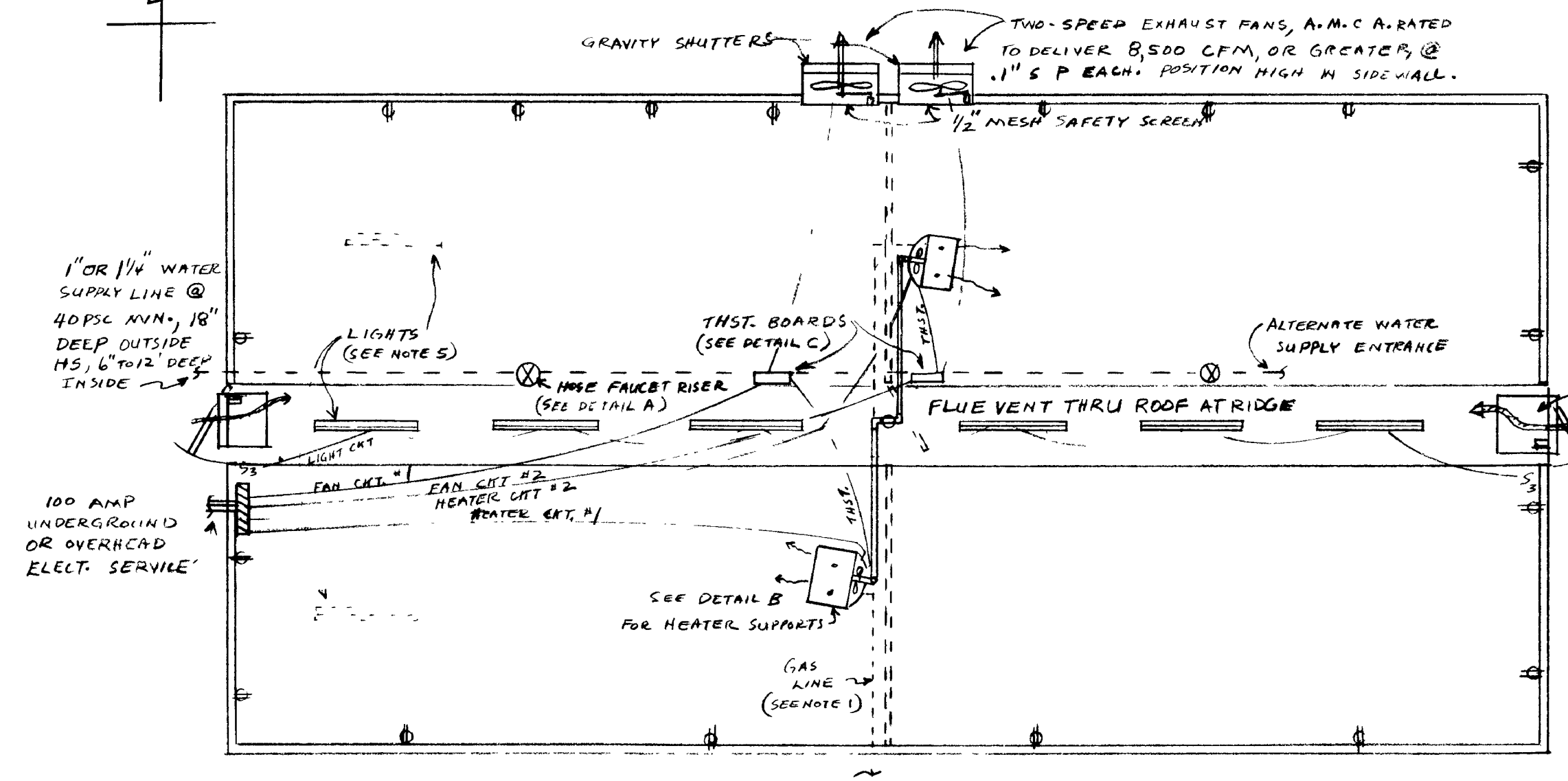
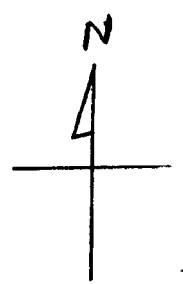
END ELEVATION
SCALE: 3/8" = 1'-0"

NOTE:
ALL LUMBER TO BE PRESSURE TREATED W/ WATER BORNE WOOD PRESERVATIVE AND KILN DRIED AFTER TREATING (SEE AEN-6)

COOPERATIVE EXTENSION WORK IN AGRICULTURE AND HOME ECONOMICS
DEPARTMENT OF AGRICULTURAL ENGINEERING
COLLEGE OF AGRICULTURE
UNIVERSITY OF KENTUCKY &
U.S. DEPARTMENT OF AGRICULTURE COOPERATING

TEACHING GREENHOUSE

Designed By J.N.W	Sheet 2 of 3
Checked By G.A.D	Plan Number
Drawn By P. PLASTER	KY. 11.8890-1A
Date: AUG 1971	

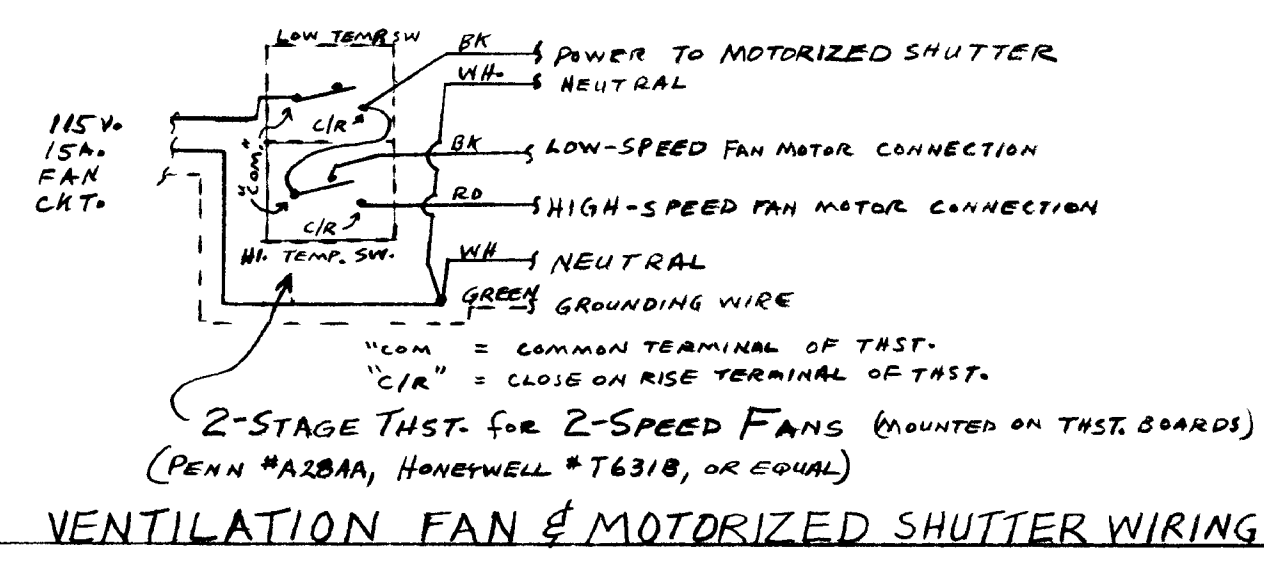
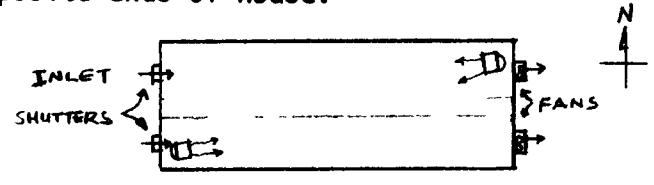


ELECTRICAL & PLUMBING LAYOUT
(USING CENTER PARTITION & GAS UNIT HEATERS)
(NO SCALE)

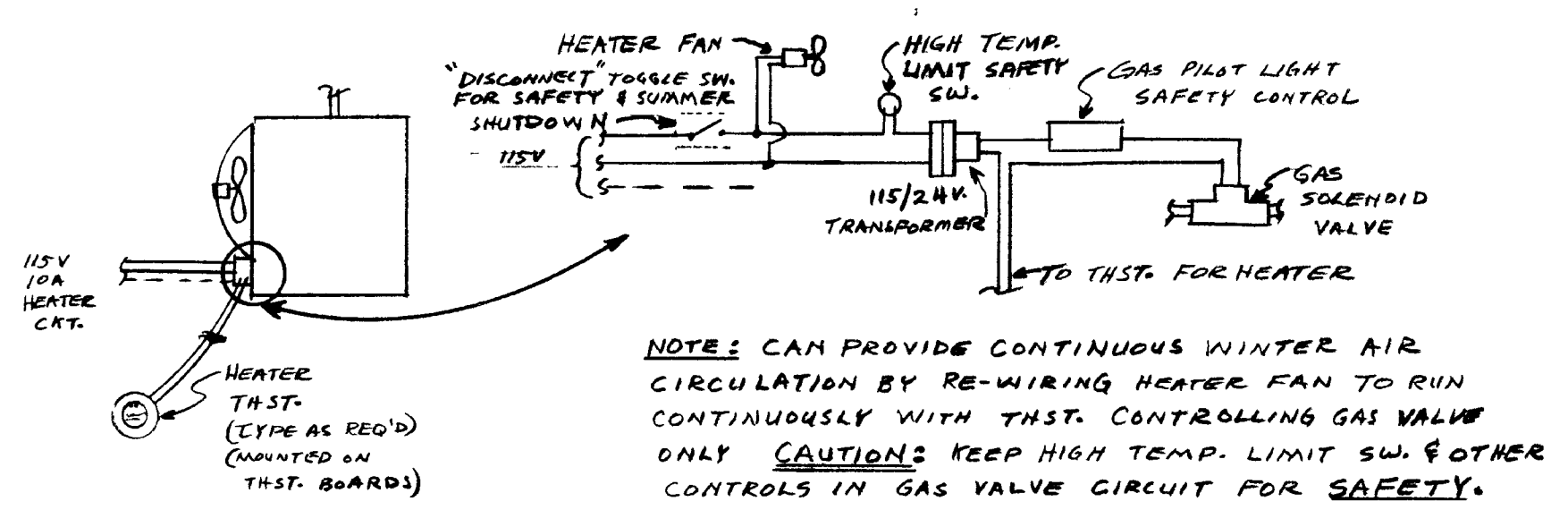
DETAIL B - UNIT HEATER SUPPORTS NO SCALE

NOTES:

1. Gas pipe size to be based on heater capacity, gas supply pressure, and length of line. Consult gas supplier or an Agricultural Engineer for required size.
2. All wiring to be plastic N.M.C. exposed, or in conduit, according to local and national codes.
3. Do not use a partition for houses shorter than 60 feet (30 ft compartments). Use alternate ventilation plan shown below for houses without a partition. For houses less than 60 ft. in length, position heaters in diagonal corners directing heat toward opposite ends of house.
4. Commercial poly-tube circulation and heat distribution equipment optional
5. Single row of fluorescent lights through center of house can be used for economy, or row of fixtures over benches and beds for more light is optional

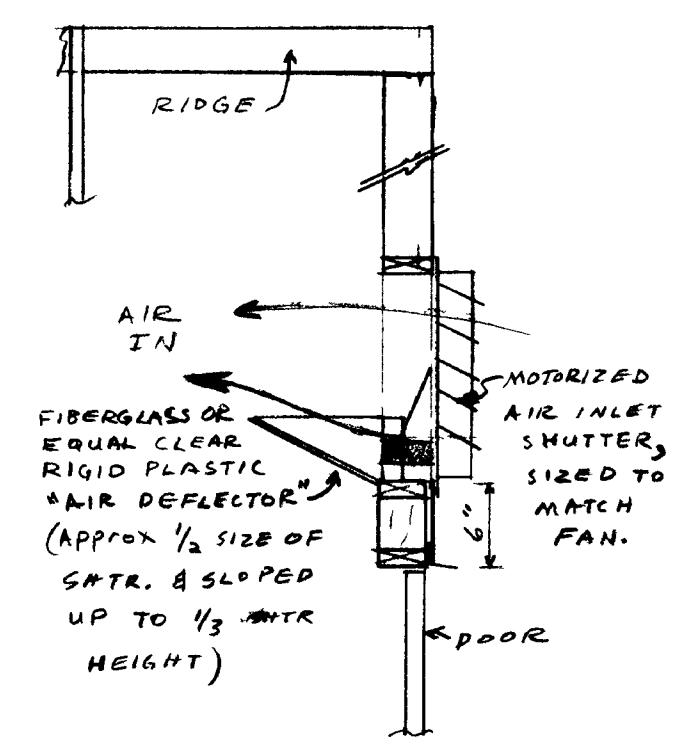


VENTILATION FAN & MOTORIZED SHUTTER WIRING



GAS HEATER & THERMOSTAT WIRING

NOTE: CAN PROVIDE CONTINUOUS WINTER AIR CIRCULATION BY RE-WIRING HEATER FAN TO RUN CONTINUOUSLY WITH THST. CONTROLLING GAS VALVE ONLY. **CAUTION:** KEEP HIGH TEMP. LIMIT SW. & OTHER CONTROLS IN GAS VALVE CIRCUIT FOR SAFETY.



DETAIL D
MOTORIZED SHUTTER AIR INLET
NO SCALE

COOPERATIVE EXTENSION WORK IN AGRICULTURE AND HOME ECONOMICS
DEPARTMENT OF AGRICULTURAL ENGINEERING
COLLEGE OF AGRICULTURE
UNIVERSITY OF KENTUCKY &
U.S. DEPARTMENT OF AGRICULTURE COOPERATING

TEACHING GREENHOUSE

Designed By GAD	Sheet 3 of 3
Checked By: JNW	Plan Number.
Drawn By GAD	KY. 11.8890-1A
Date DEC 71	