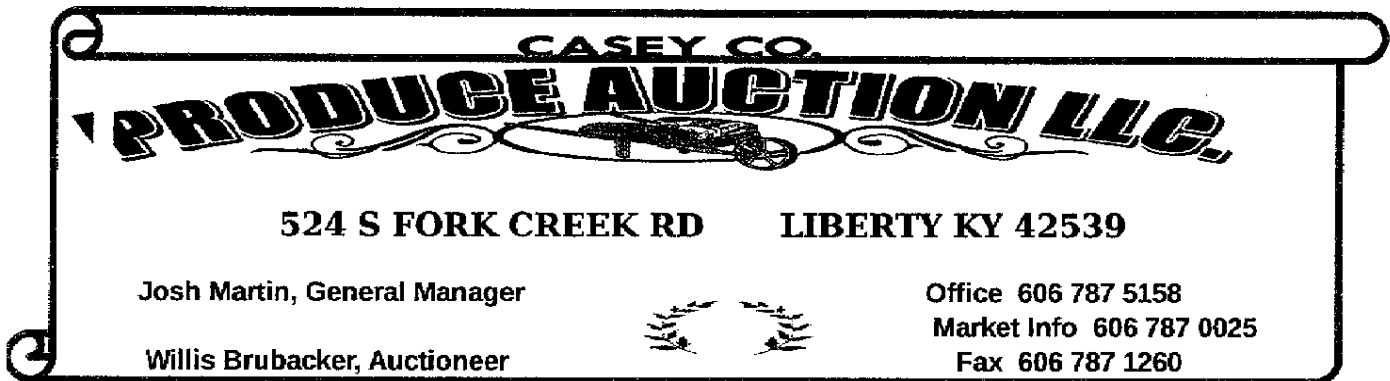


Sheet2



## Market Report for:

08/25/23

Quantity	Unit Size	Description	High	Average	Low
128	10 Lb.	Red Tomatoes	\$13.00	\$10.79	\$7.00
23	10 Lb.	H.L. Tomatoes	\$15.00	\$12.96	\$11.00
21	10 Lb.	Green Tomatoes	\$10.00	\$9.33	\$8.00
67	25 Lb.	Canners	\$11.00	\$9.54	\$9.00
12	Peck	Zuchinni	\$11.00	\$8.92	\$6.00
43	Pt.	Tomatoes	\$1.15	\$1.15	\$1.15
6	Bu.	Various Beans	\$45.00	\$36.50	\$26.00
7	Bu.	H.R. Beans	\$45.00	\$45.00	\$45.00
305	Dozen	Sweetcorn	\$4.25	\$2.47	\$1.25
445	Count	Watermelon	\$6.00	\$3.63	\$2.00
1622	Med.-XL.	Cantaloupe	\$3.75	\$1.69	\$0.55
435	Sm.&#2	Cantaloupe	\$1.05	\$0.72	\$0.50
14	Peck	Sm. Pickles	\$8.00	\$6.93	\$4.00
82	½ bu.	Pickles	\$15.00	\$6.09	\$5.00
17	½ bu.	Potatoes	\$30.00	\$17.65	\$10.00
15	Peck	Onions	\$14.00	\$12.00	\$10.00
30	Peck	Peppers	\$6.00	\$4.17	\$1.00
14	Bu.	Bell Peppers	\$22.00	\$15.57	\$10.00
20	½ bu.	Specialty Peppers	\$5.00	\$4.20	\$3.00
21	Peck	Yel. Squash	\$5.00	\$5.00	\$5.00
3	24ct. Box	Slicers	\$22.00	\$22.00	\$22.00
105	12 Inch.	Flowers	\$8.50	\$5.09	\$3.25