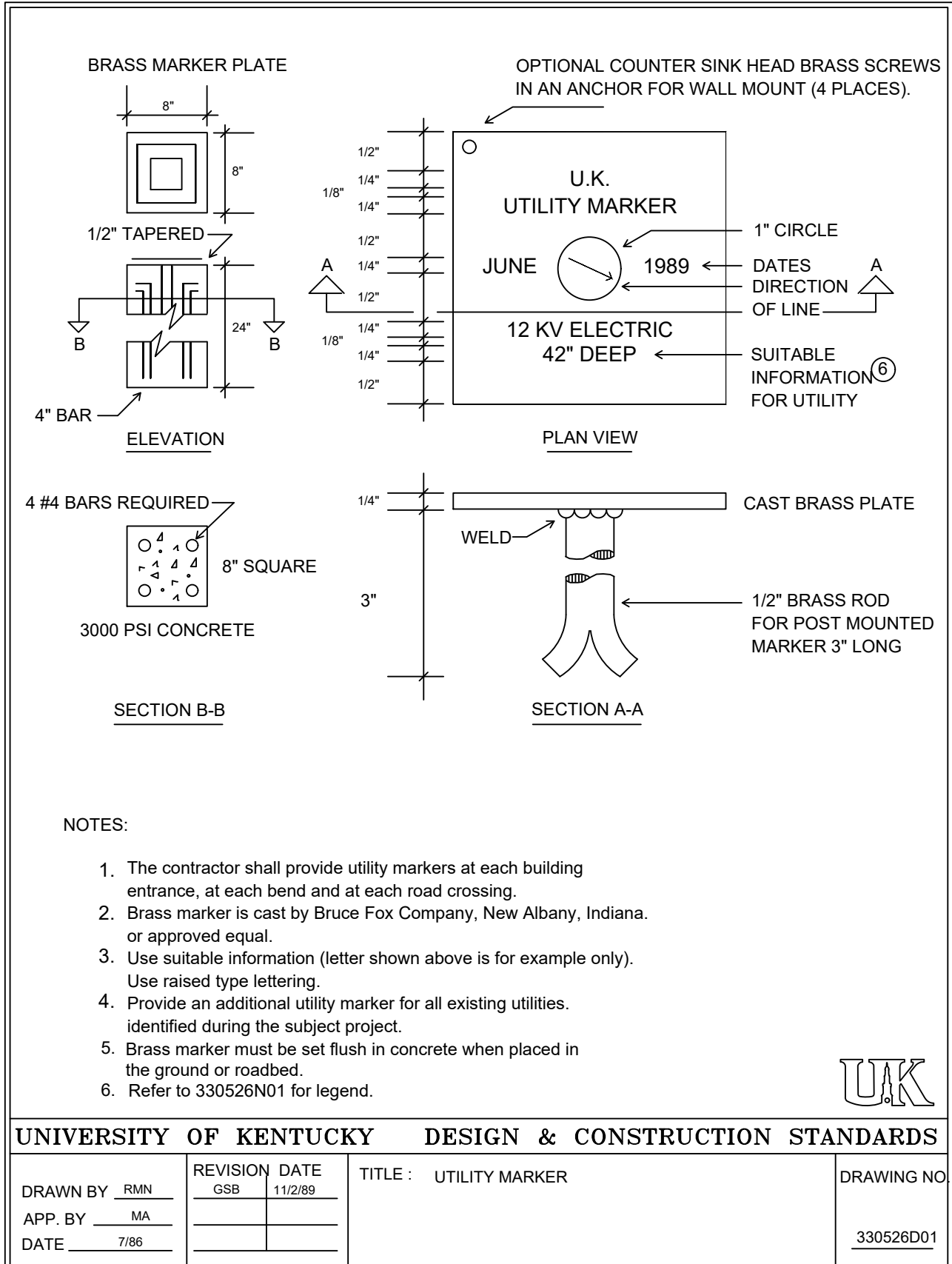


330526D01 UTILITY LINE SIGNS, MARKERS, AND FLAGS



NOTES:

1. The contractor shall provide utility markers at each building entrance, at each bend and at each road crossing.
2. Brass marker is cast by Bruce Fox Company, New Albany, Indiana, or approved equal.
3. Use suitable information (letter shown above is for example only). Use raised type lettering.
4. Provide an additional utility marker for all existing utilities identified during the subject project.
5. Brass marker must be set flush in concrete when placed in the ground or roadbed.
6. Refer to 330526N01 for legend.



UNIVERSITY OF KENTUCKY DESIGN & CONSTRUCTION STANDARDS

| | | | |
|---------------------|---|-------------------------------|------------------------------|
| DRAWN BY <u>RMN</u> | REVISION <u>GSB</u> DATE <u>11/2/89</u> | TITLE : <u>UTILITY MARKER</u> | DRAWING NO. <u>330526D01</u> |
| APP. BY <u>MA</u> | | | |
| DATE <u>7/86</u> | | | |