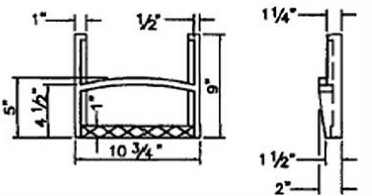
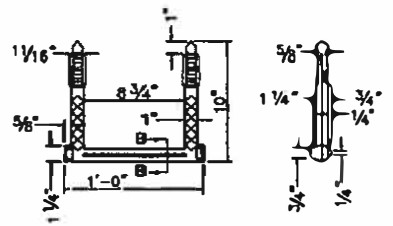


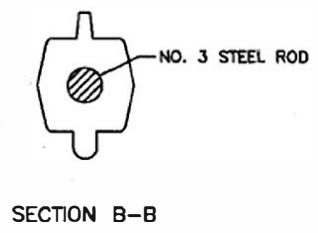
STEP TYPE NO. 1



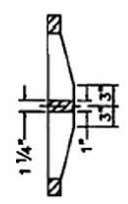
STEP TYPE NO. 2



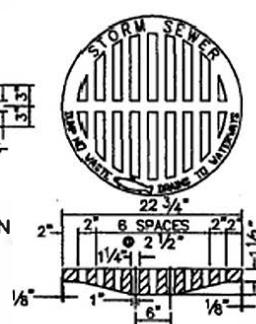
STEP TYPE NO. 3



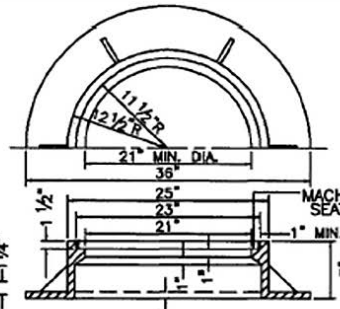
SECTION B-B



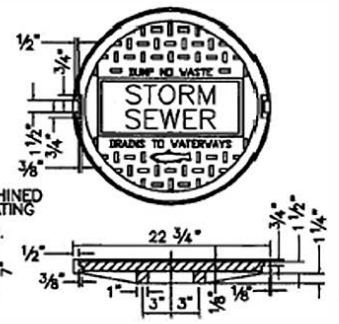
SECTION



GRATING COVER



FRAME

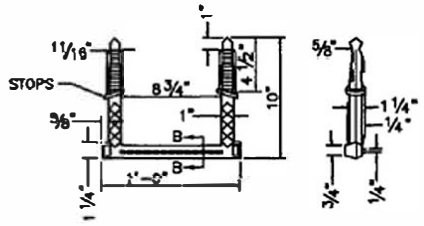


SOLID COVER

## MANHOLE FRAME AND COVERS

**NOTES:**

1. MINIMUM WEIGHT FOR THE 7" FRAME SHALL BE 185 LBS.
2. MINIMUM WEIGHT FOR THE SOLID COVER SHALL BE 120 LBS.
3. CASTINGS TO MEET ASTM A-48 CLASS 35.



STEP TYPE NO. 4

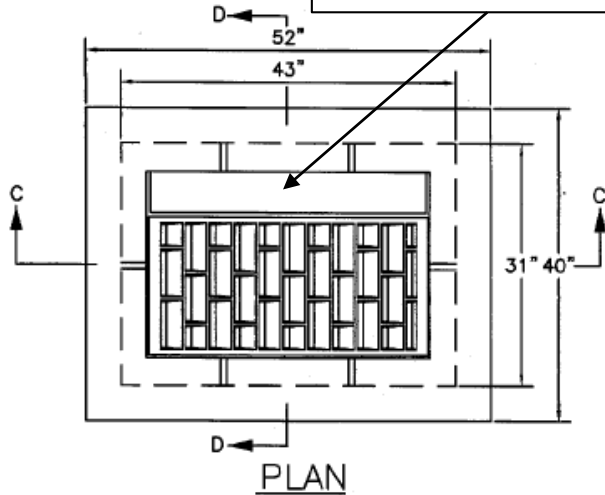
## MANHOLE STEPS

**NOTES:**

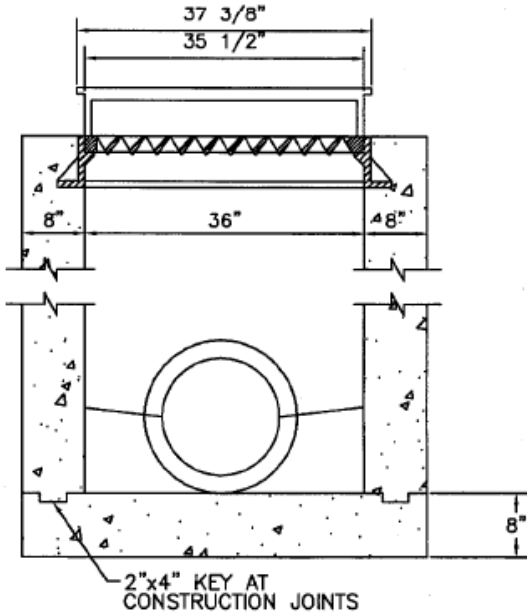
1. STEPS SHALL BE ASPHALT COATED CAST IRON OR POLYPROPYLENE PLASTIC COATED STEEL ROD OR OF A TYPE AND SIZE APPROVED BY THE ENGINEER.
2. STEPS SHALL BE SPACED APPROXIMATELY 12" TO 16" O.C. VERTICALLY SO AS TO FORM A CONTINUOUS LADDER.
3. STEPS SHALL BE REQUIRED IN MANHOLES WHEN THE STRUCTURE IS 4 FEET AND GREATER IN DEPTH. (MEASURE FROM FLOWLINE OF LOWEST PIPE TO TOP OF STRUCTURE.)
4. THE TREADS OF ALL STEPS SHALL HAVE ANTI-SKID PROPERTIES FOR HAND AND FOOT GRIPS.
5. MANHOLE STEPS SHALL BE INSTALLED IN A VERTICAL LINE AND SHALL COMPLY WITH OSHA STANDARDS IN ALL RESPECTS.
6. FOR CAST-IN-PLACE OR PRECAST CIRCULAR AND NON-CIRCULAR MANHOLES.
7. FIRST STEP SHALL BE NO MORE THAN 18" FROM TOP OF RIM.

NO.	DATE	REVISION DESCRIPTION	BY
DIVISION OF ENGINEERING			
MANHOLE FRAMES, COVERS, & STEPS			
STANDARD DRAWING NO.		103	
APPROVED		5/1/00	
URBAN COUNTY ENGINEER		DATE	
COMMISSIONER		DATE	

DUMP NO WASTE  
DRAINS TO WATERWAYS



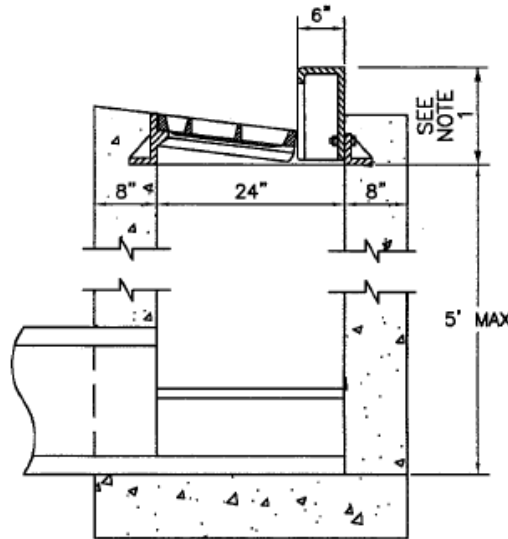
PLAN



SECTION C-C

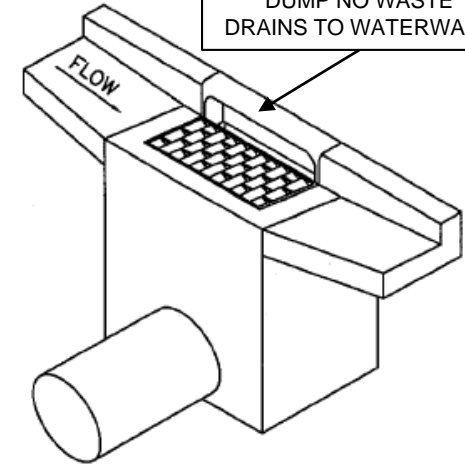
NOTES:

1. CURB BOX ADJUSTABLE 6" TO 9" TO MATCH TOP OF CURB.
2. NO. 5 STEEL SHALL BE USED THROUGHOUT ON 12" CENTERS. 2" CLEARANCE ON ALL EXTERIOR WALL BARS. EXTERIOR HORIZ. WALL BARS SHALL HAVE A 12" MIN. LAP AT CORNERS.
3. ALL EXPOSED FLATWORK SHALL HAVE A HAND FLOATED AND BROOMED FINISH.
4. NO STEEL IS REQUIRED IN BOTTOM SLAB.
5. ALL VERTICAL STEEL SHALL EXTEND 4" INTO BOTTOM SLAB. VERTICAL STEEL SHALL HAVE A 12" LAP INTO BOTTOM SLAB WITH 3" CLEARANCE FROM EXTERIOR BOTTOM.
6. SET BACK OF FRAME IN CONCRETE TO ANCHOR IN PLACE AFTER IT HAS BEEN ADJUSTED.
7. 18" MAX. PIPE DIAMETER.
8. EAST JORDAN IRON WORKS CATCH BASIN CURB INLET 7035 WITH TYPE M6 GRATE OR EQUIVALENT.

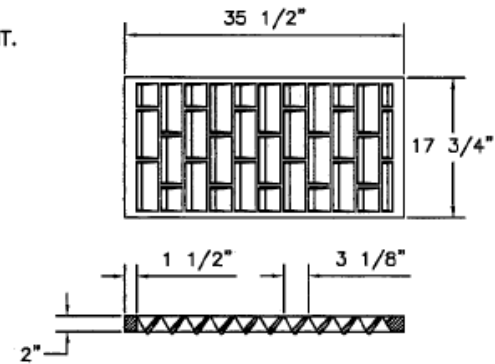


SECTION D-D

DUMP NO WASTE  
DRAINS TO WATERWAYS



ISOMETRIC VIEW



GRATE DETAIL

NO.	DATE	REVISION DESCRIPTION	BY
DIVISION OF ENGINEERING			
CURB BOX INLET TYPE "D"			
STANDARD DRAWING NO.	125		
APPROVED	<i>[Signature]</i>	5/1/08	DATE
LEXINGTON URBAN COUNTY ENGINEER	<i>[Signature]</i>	5/1/08	DATE
COMMISSIONER	<i>[Signature]</i>		DATE