



2019

ANNUAL REPORT

411 S. Limestone, Lexington KY 40506
859.257.6234

recycle@uky.edu
[@UKYRecycles](https://twitter.com/UKYRecycles)



2019 ANNUAL REPORT

UK Recycling had a great year! This year has produced incredible growth and progress throughout campus. The University saw an increase in the diversion rate (items recycled, reused, donated and composted), which reached **34%** and led to the greatest decrease in landfill weight the university has had in recent years. Compared to 2018, there was a 9% decrease - nearly 2 million pounds - in amount of material UK sent to the landfill in 2019. This decrease is especially noteworthy given the continued growth on the campus.

New programs in 2019 included the following:

- [Styrofoam Cooler Recycling](#)
- [IV Wrapper Recycling](#)
- [Food Waste Compost Program](#)

In 2017, the University released its 5 year **Sustainability Strategic Plan**, which includes goals specific to waste reduction and recycling. The four main goals for Materials Management include -

1. Increase UK's waste diversion rate to 50%
2. Develop and implement a sustainability purchasing protocol
3. Conduct waste audits to understand the University's waste stream
4. Increase education and outreach on waste diversion/reduction and procurement practices.

MATERIALS MANAGEMENT

Sustainability Strategic Plan
(2017-2020)



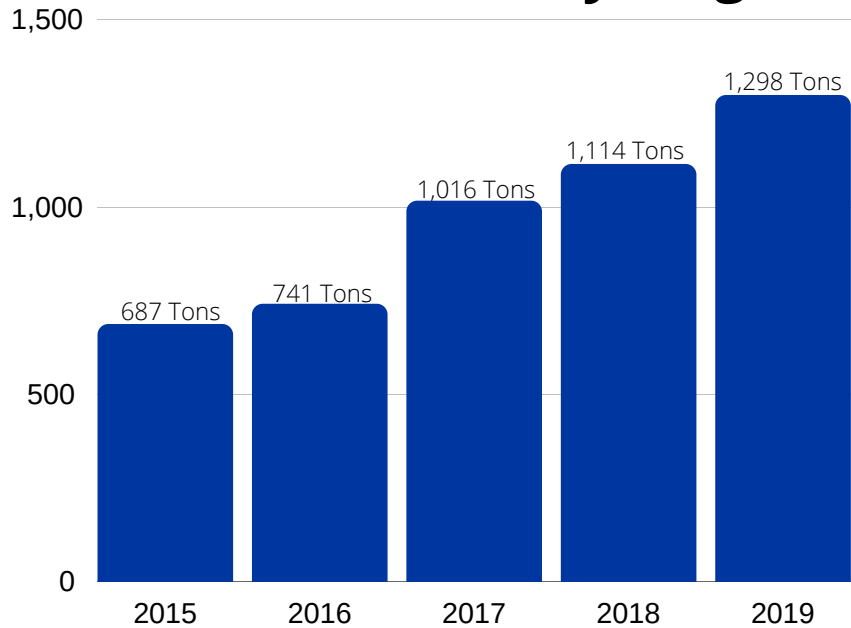
Year in Review

RECYCLING

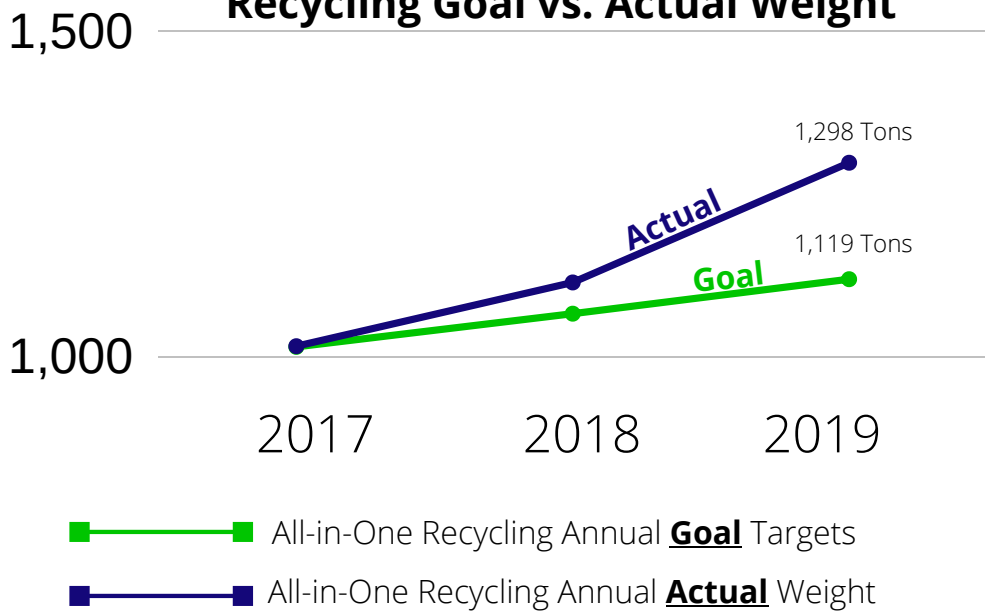
The **All-in-One recycling** (cardboard, paper, aluminum & steel cans, plastic bottles & jugs, glass bottles & jars) increased total weight by **16%** from 2018 weights.



All-in-One Recycling



Recycling Goal vs. Actual Weight



All-in-One general recycling is the largest portion of our recycling effort on campus. In order to achieve the goal of increasing recycling by 25% by 2022, UK Recycling set specific goals for the All-in-One program.

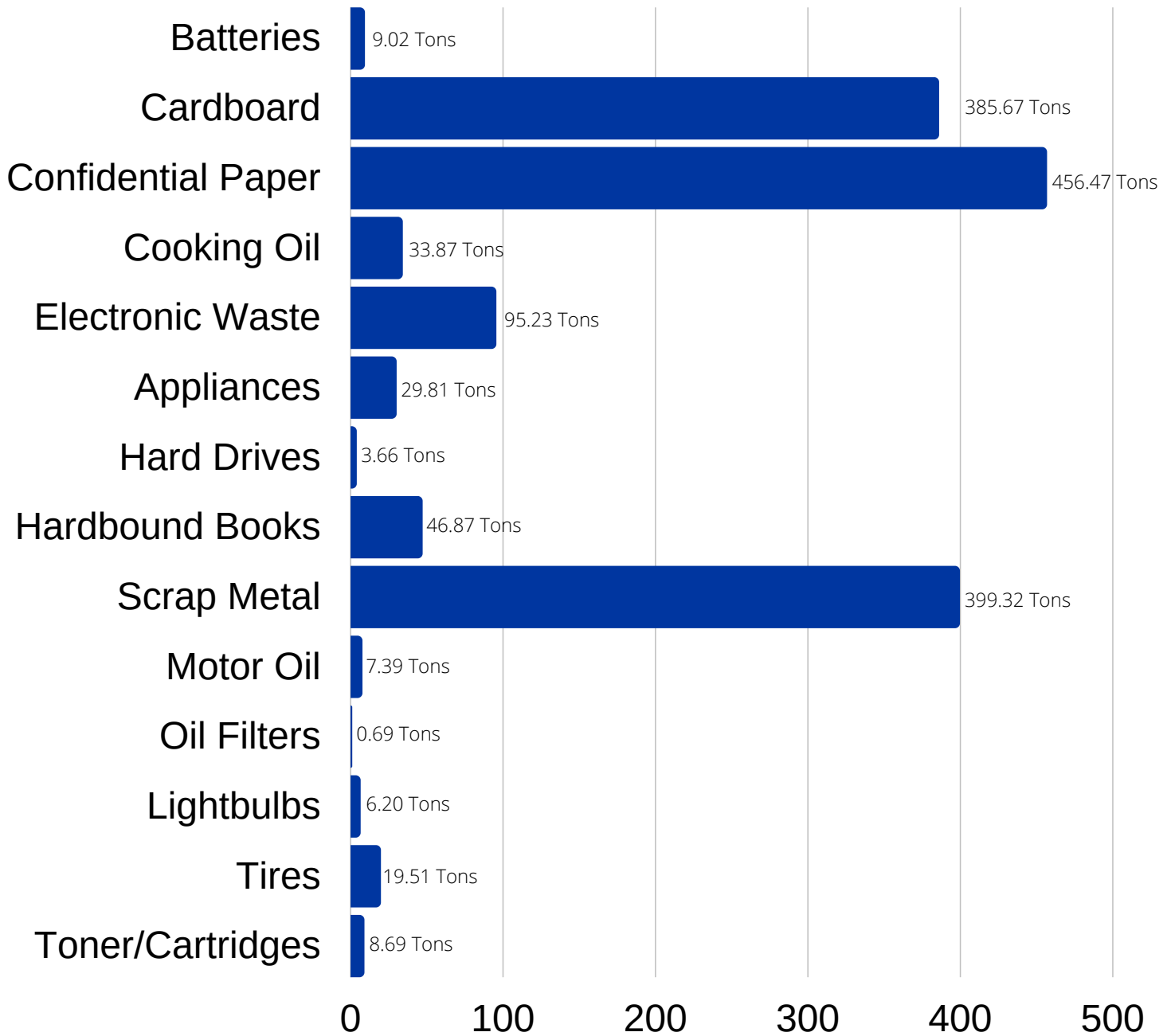
UK Recycling is on track to increase recycling by 25% by 2022, meeting one of the goals in the Sustainability Strategic Plan.

Year in Review

OTHER RECYCLING

In addition to general recycling, UK Recycling has other recycling programs to capture a wider range of materials. Check out the full list of items recycled on UK Recycling's [website](#).

15%
increase
from 2018

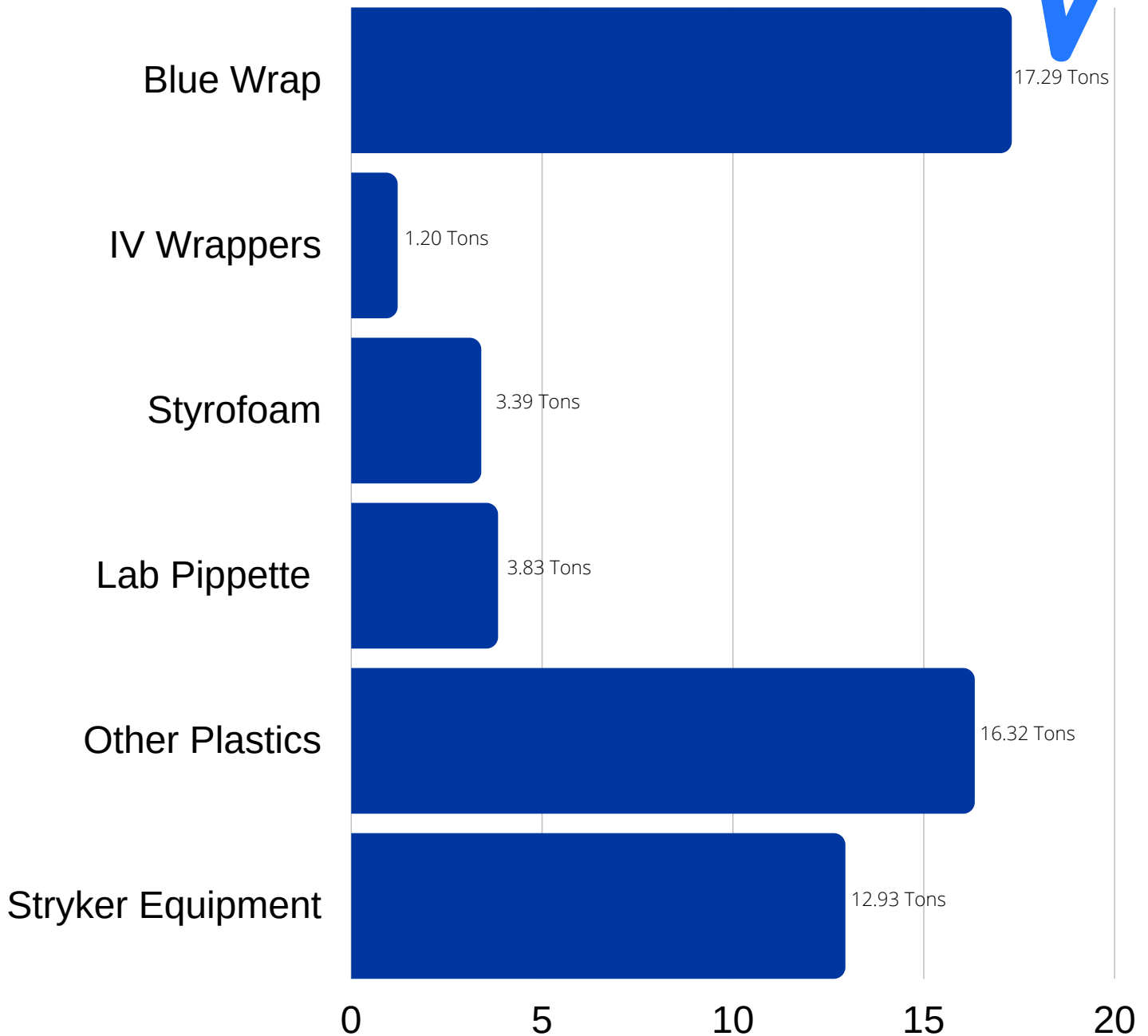


Year in Review

OTHER RECYCLING HEALTHCARE

UK Healthcare works with UK Recycling to increase their recycling efforts!

Check out the full list of items recycled at UKHC on UK Recyclings [website](#).



Year in Review

AMERICA RECYCLES DAY

Each year, to celebrate America Recycles Day, November 15th, UK Recycling develops a campaign to encourage faculty, staff and students to recycle. Using data from the 2018 Waste Characterization Study, cardboard was found to be an item consistently thrown away. Through the **#BringOnTheBoxes** campaign, over 500 faculty, staff and students took the pledges to recycle their cardboard boxes.



Tabling & Presentations



Social Media Outreach



Year in Review

RECYCLING - EXPANDED

As UK Recycling continues to work toward a 50% diversion rate, new materials have been added to the list of recyclable items. In 2019, both Styrofoam coolers and IV Wrappers were collected and recycled diverting over 5,000lbs of material from the landfill.



OVER
3,000
COOLERS
RECYCLED



Styrofoam Coolers

UK Recycling began a partnership with Creative Packaging in Shelbyville, KY to recycle the University's styrofoam coolers. Creative Packaging works to reuse the coolers as-is or break them down to create new coolers or molded packaging.

This initiative began through a UK Recycling Student Intern's, Sophie Beavin, independent project. In 2019, almost **7,000lbs of styrofoam** was diverted from the landfill and recycled!

IV Wrapper Recycling

2,400lbs
IV WRAPPERS
RECYCLED



**#2 HDPE
PLASTIC BAG ONLY**

FOR SERVICE CALL 257-6234



To assist UK Healthcare with waste diversion efforts, UK Recycling began a new program to capture the outer wrappers for IV Bags. Since most areas throughout the hospital use IV bags, the potential for this program to grow is substantial.

This new program began through a partnership with Central Pharmacy and the Nursing Sustainability Committee. Through their efforts, **over 1.2 tons** of material was diverted from the landfill and given a second life through recycling.

Year in Review

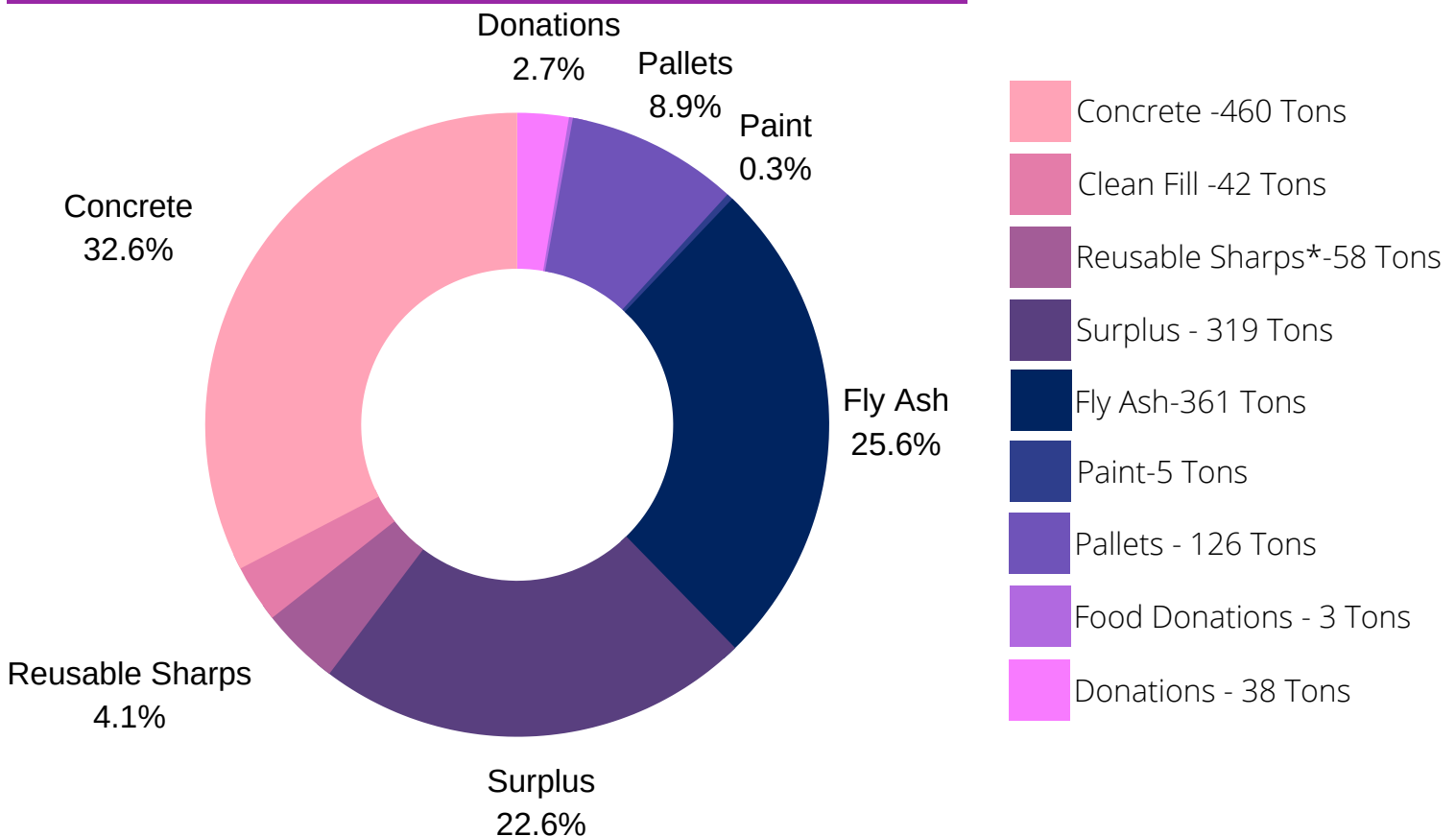
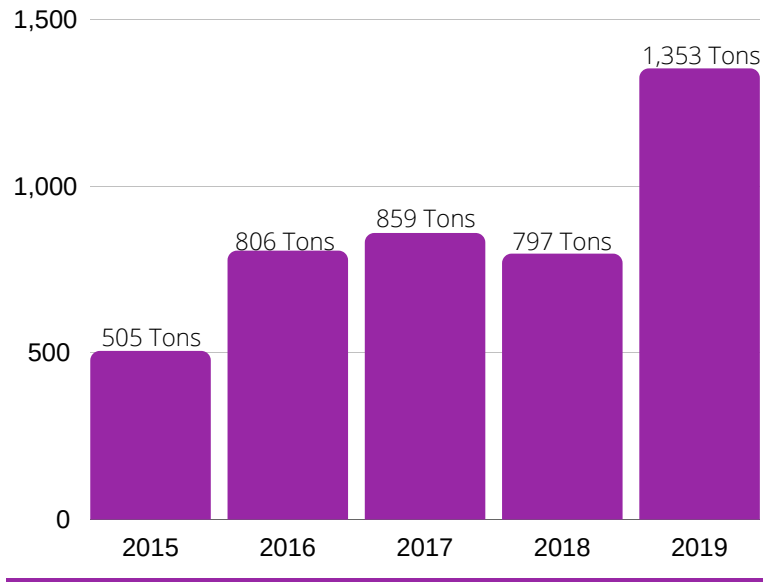
DONATION/REUSE

UK Recycling's donation and reuse efforts produced incredible growth throughout campus with the start of the **concrete recycling program**.

The concrete reported and recycled does not include concrete from major construction projects, but smaller Facilities Department and College of Agriculture, Food and the Environment projects.



Donation & Reuse



*Items from UKHC that are properly cleaned and reused

Year in Review

GIVE & GO DONATION PROGRAM



Each year, UK Recycling partners with multiple community groups to donate usable and unwanted items students donate. Household items are donated to Goodwill and the Women's Hope Center. Non-perishable foods are donated to Big Blue Pantry on campus.

May 2019 Results

BIG BLUE MOVE

WHAT DID WE DONATE DURING SPRING 2019 RESIDENCE LIFE MOVE OUT?

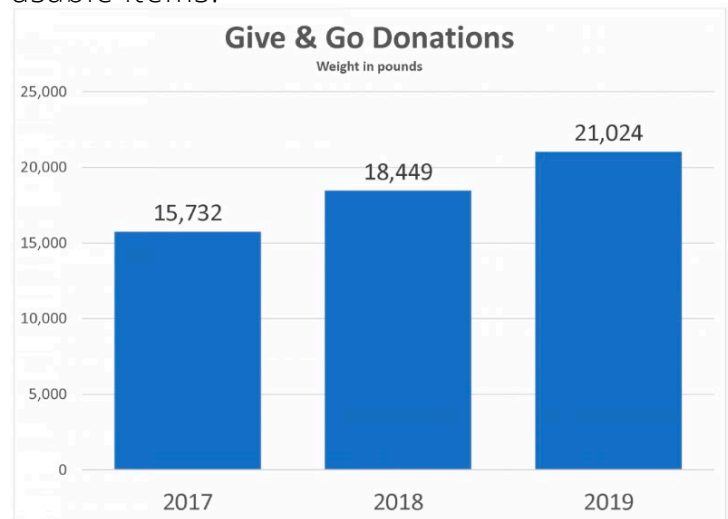
21,024 lbs | 13%
TOTAL DONATED | increase since 2018

19,616 lbs | 132%
NON-PERISHABLE FOOD SENT TO BIG BLUE PANTRY | increase since 2018

21,024 lbs | 23%
HOUSEHOLD ITEMS | increase since 2018



The **Give and Go Donation Station** program is a collaboration among several UK departments - Recycling, Trucking, Residence Life, Campus Housing, Auxiliary Services, Sustainability, Big Blue Pantry, and UK Housing partner, Greystar. The goal of the program is to encourage students to donate rather than throw away usable items.



Partners

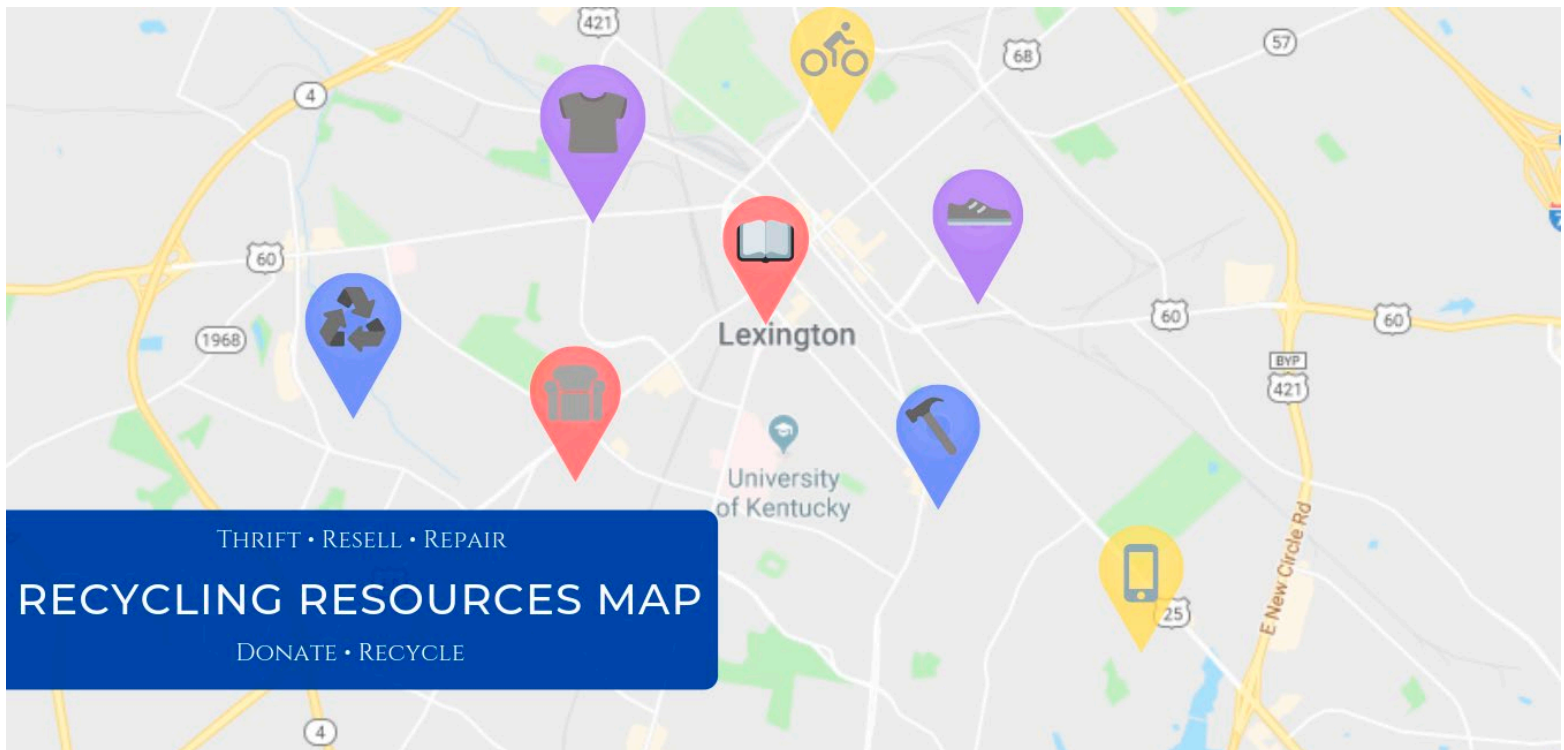


Year in Review

SUSTAINABILITY INTERNSHIP

RECYCLING INTERN

Each year, UK Recycling hosts interns to assist with day-to-day operations and develop an independent project. In 2019, Sophie Beavin developed a Reuse Resource map for UK Students to learn about opportunities to thrift, resell, repair, donate and recycle.



Donation
Center



Recycling
Center



Repair
Stores



Resell
Stores



Thrift
Stores

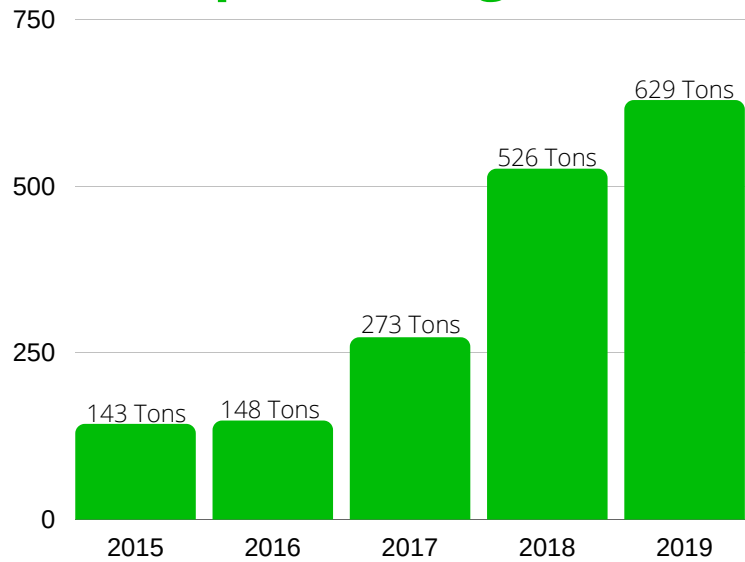
This map was a partnership with Information Technology Services' Mapping & Geospatial Products to produce this first of its kind map that highlights stores and centers through Lexington.

Year in Review

COMPOST/ORGANICS

UK Recycling, in partnership with UK Sustainability, UK Dining, and UK College of Agriculture, Food and the Environment, began a Food Waste Composting program. From June 2019 to December 2019, the Food Waste Composting program captured over **62 Tons**.

Compost & Organics



Increase from 2018
20%

Additionally, UK Grounds increased yard waste - leaves, brush, wood chips, etc. - collection through campus. The yard waste captured was composted and diverted from the landfill.

Organics by the numbers:

336 tons mulched



PALLETS

231 tons composted



LEAVES

62 tons composted



FOOD WASTE

Year in Review

FOOD WASTE COMPOST PROGRAM

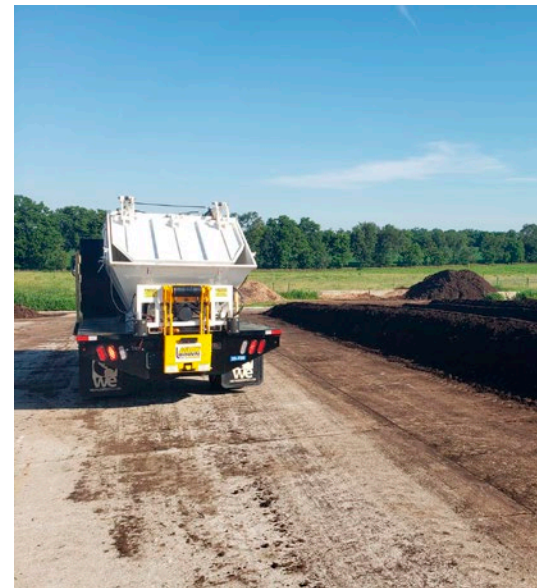
In June 2019, the University began capturing food waste from the UK Dining facilities. Food waste, scraps and brown napkins left on plates are pulped and sent to the UK C. Oran Little Research Center farm to become compost. Finished compost is brought back to campus and utilized by UK Grounds as a soil amendment.



Food waste is sent through a pulper at each dining facility.



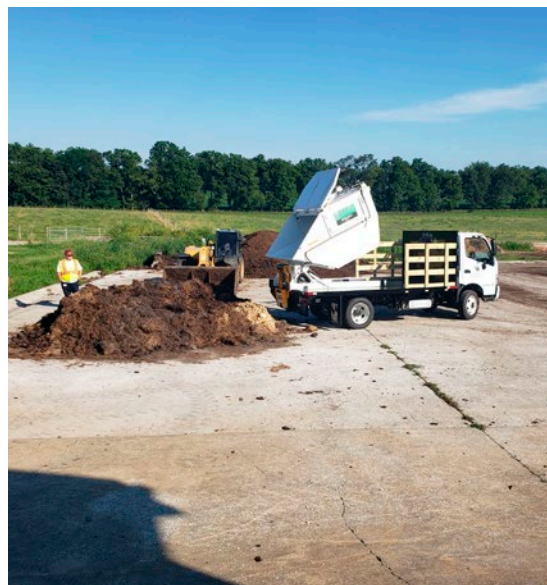
Food waste is captured in the collection truck.



All food waste is taken out to the UK Farm.



Food waste is incorporated with animal bedding and manure and composted.



Finished compost is then loaded into the truck and transported back to campus.

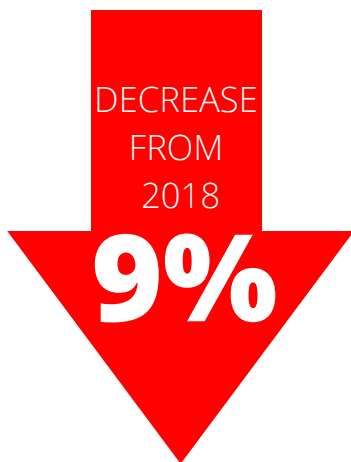


UK Grounds utilizes finished compost on campus as a soil amendment.

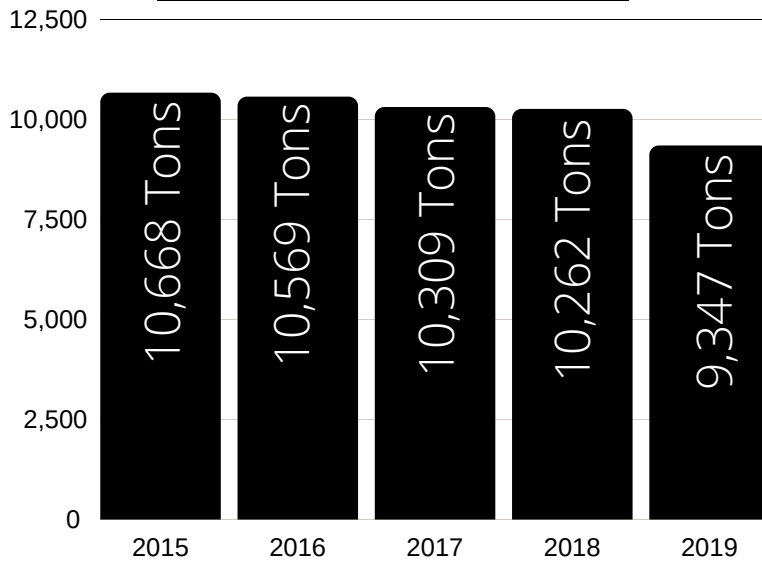
Year in Review

DIVERSION

In 2018, the university's diversion rate was 27%. UK Recycling is pleased to announce that the diversion rate increased to 34% in 2019, and that UK is on track to hit its goal of diverting half of its waste by 2022.



LANDFILL WASTE



TOTAL WASTE

