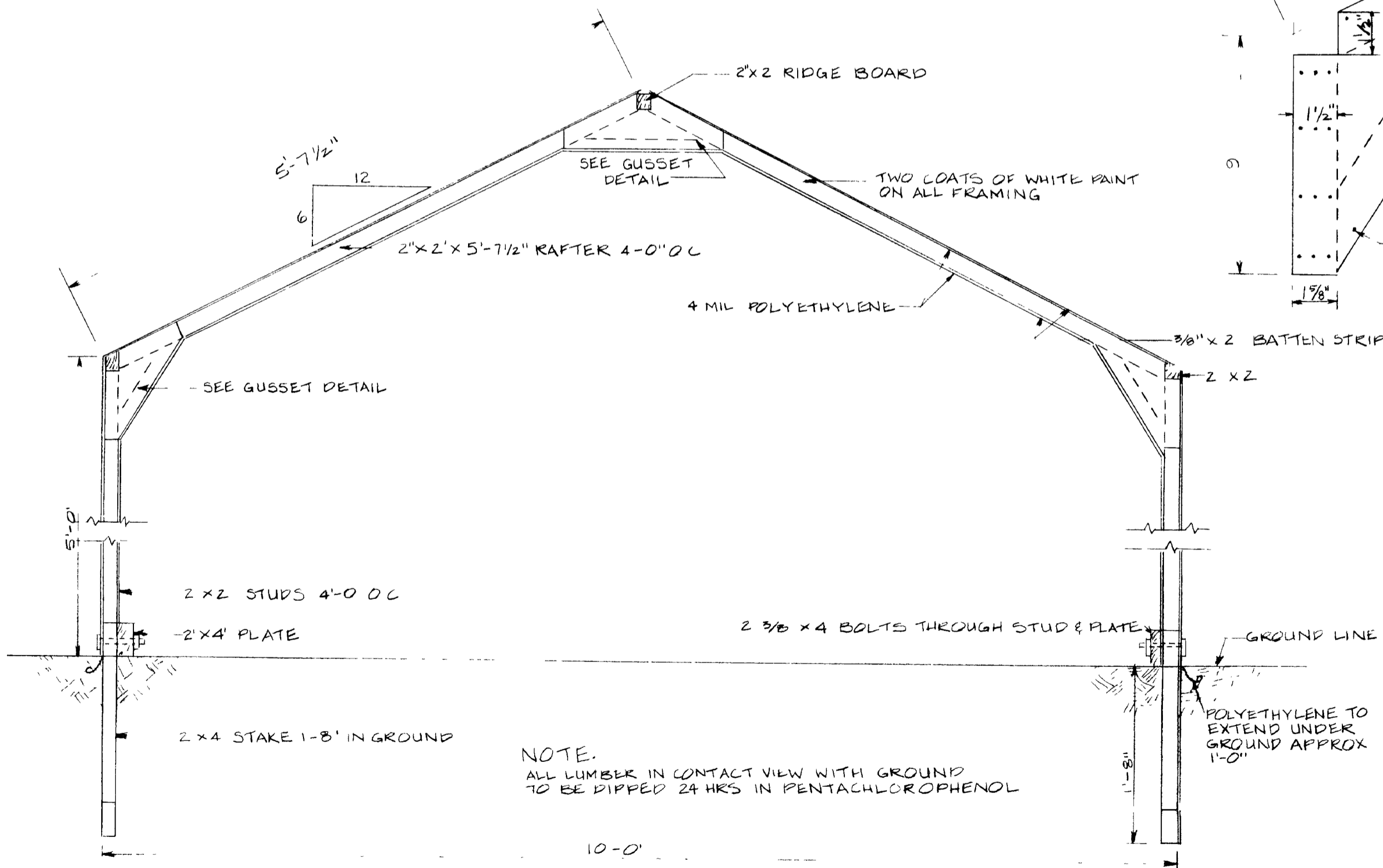


NOTES

5 LIGHT SWITCH 100 WATT INCANDESCENT FIXTURE
LUMBER EQUAL TO SELECT STRUCTURAL DOUGLAS FIR SHOULD BE USED LUMBER SHOULD BE SELECTED WHICH IS FREE OF KNOTS OR OTHER DEFECTS MINOR DEFECTS SHOULD BE LOCATED IN UPPER 2/3 OF RAFTERS OF LOWER 1/2 OF STUP

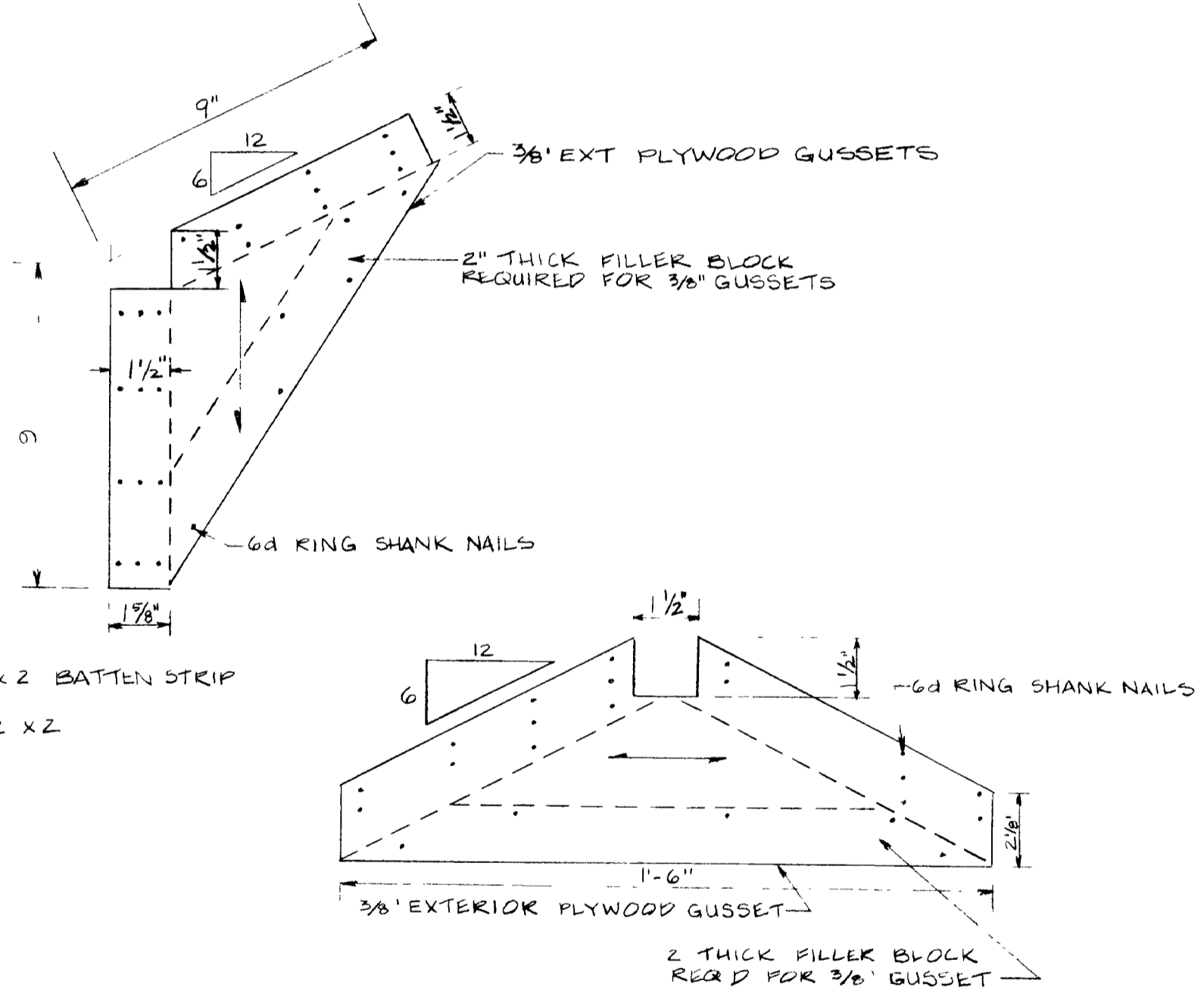
BUILDING ANY DESIRED LENGTH

PLAN
SCALE 3/8" = 1'-0"



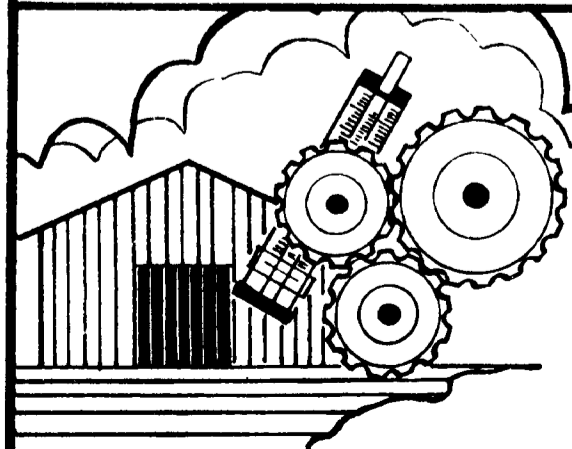
SECTION VIEW A-A
SCALE 1" = 1'-0"

NOTE.
ALL LUMBER IN CONTACT VIEW WITH GROUND TO BE DIPPED 24 HRS IN PENTACHLOROPHENOL



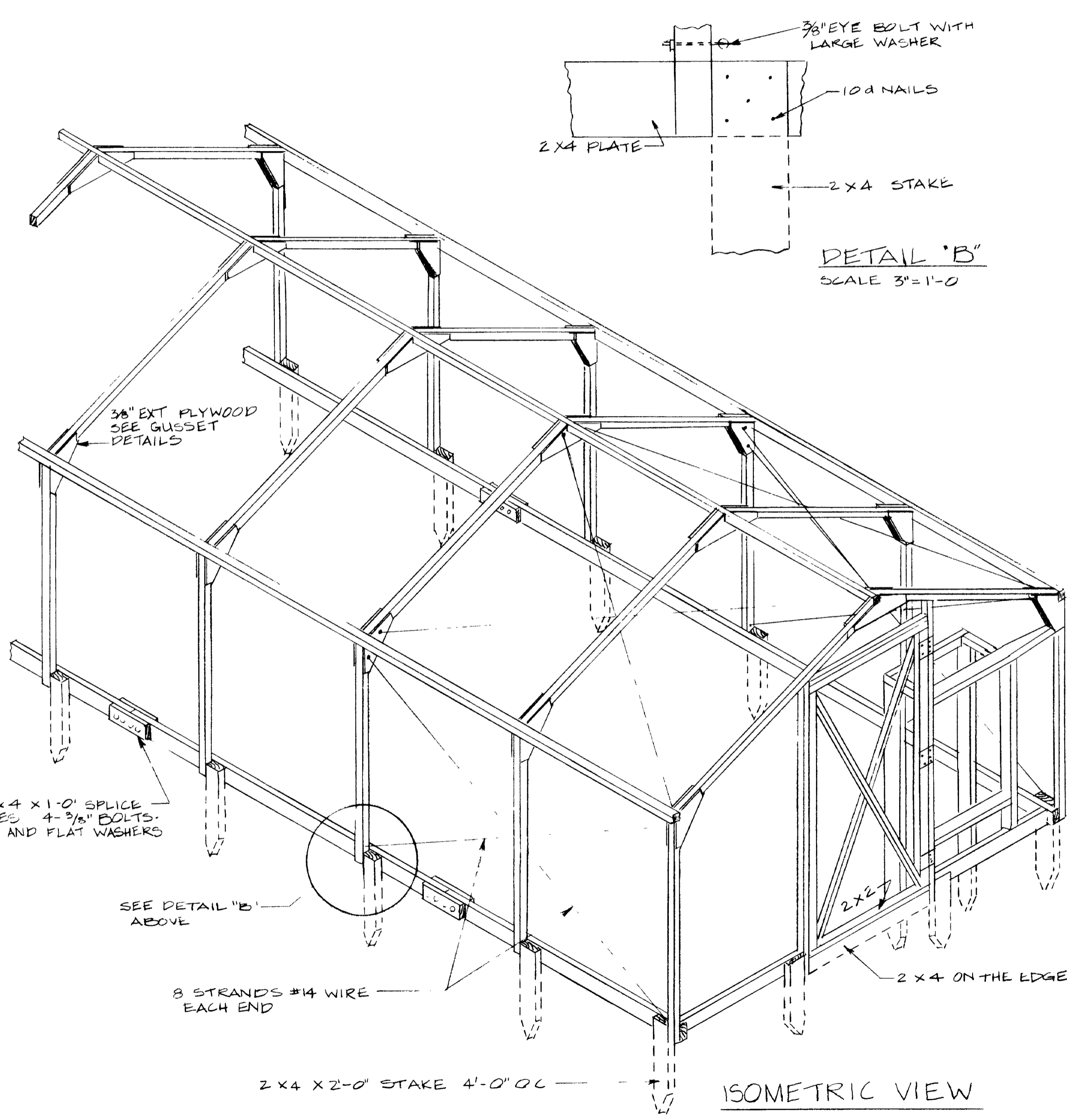
GUSSET DETAILS
SCALE 3" = 1'-0"

"KENTUCKY SPECIALTY" GREENHOUSE

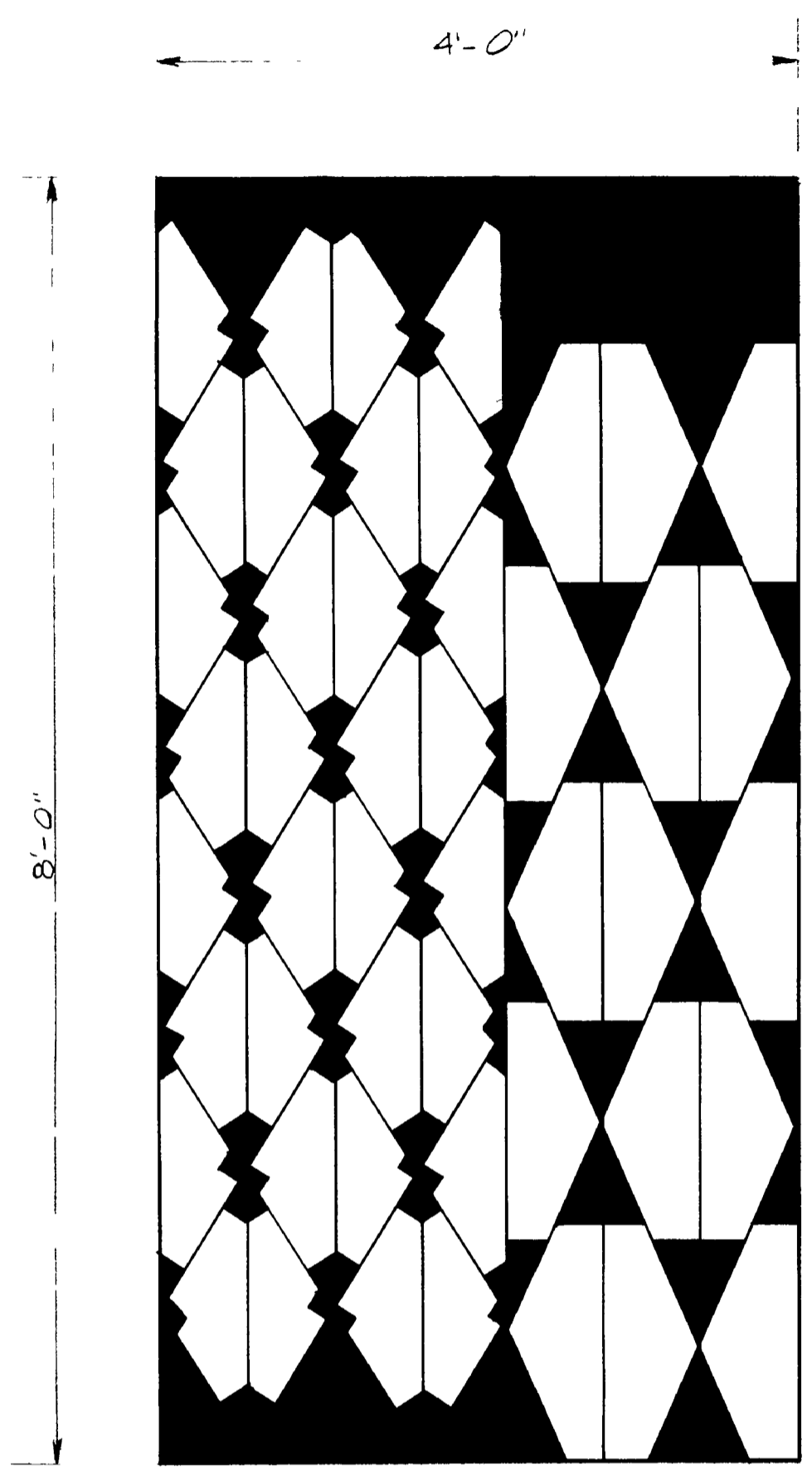


COOPERATIVE EXTENSION SERVICE
AGRICULTURE AND HOME ECONOMICS
DEPARTMENT OF AGRICULTURAL ENGINEERING
COLLEGE OF AGRICULTURE
UNIVERSITY OF KENTUCKY
AND
U.S. DEPARTMENT OF AGRICULTURE COOPERATING

DESIGNED BY	SHEET 1 OF 4
CHECKED BY	PLAN NUMBER
DRAWN BY RL W W	KY. II. 771-3
DATE	
REVISIONS 6-85	



ISOMETRIC VIEW



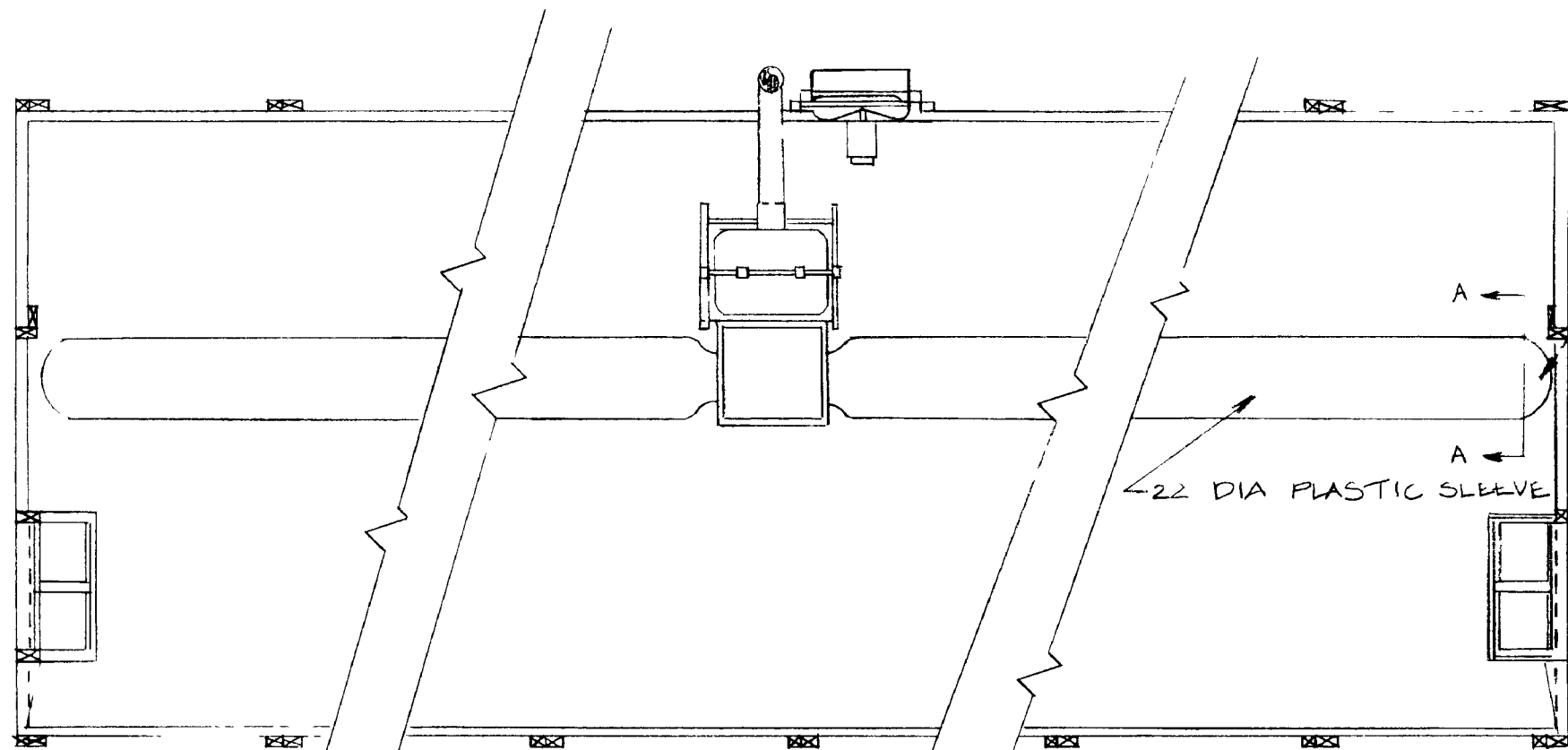
CUTTING DIAGRAM
SCALE 1"=1'-0"

NOTE
SEE GUSSET DETAIL SHEET #1

"KENTUCKY SPECIALTY" GREENHOUSE

COOPERATIVE EXTENSION SERVICE
AGRICULTURE AND HOME ECONOMICS
DEPARTMENT OF AGRICULTURAL ENGINEERING
COLLEGE OF AGRICULTURE
UNIVERSITY OF KENTUCKY
AND
U.S. DEPARTMENT OF AGRICULTURE COOPERATING

DESIGNED BY JHW	SHEET 2 OF 4
CHECKED BY GHJ	PLAN NUMBER
DRAWN BY CM & JW	KY. II. 771-3
DATE 7-1-63	
REVISIONS 7-1-85	

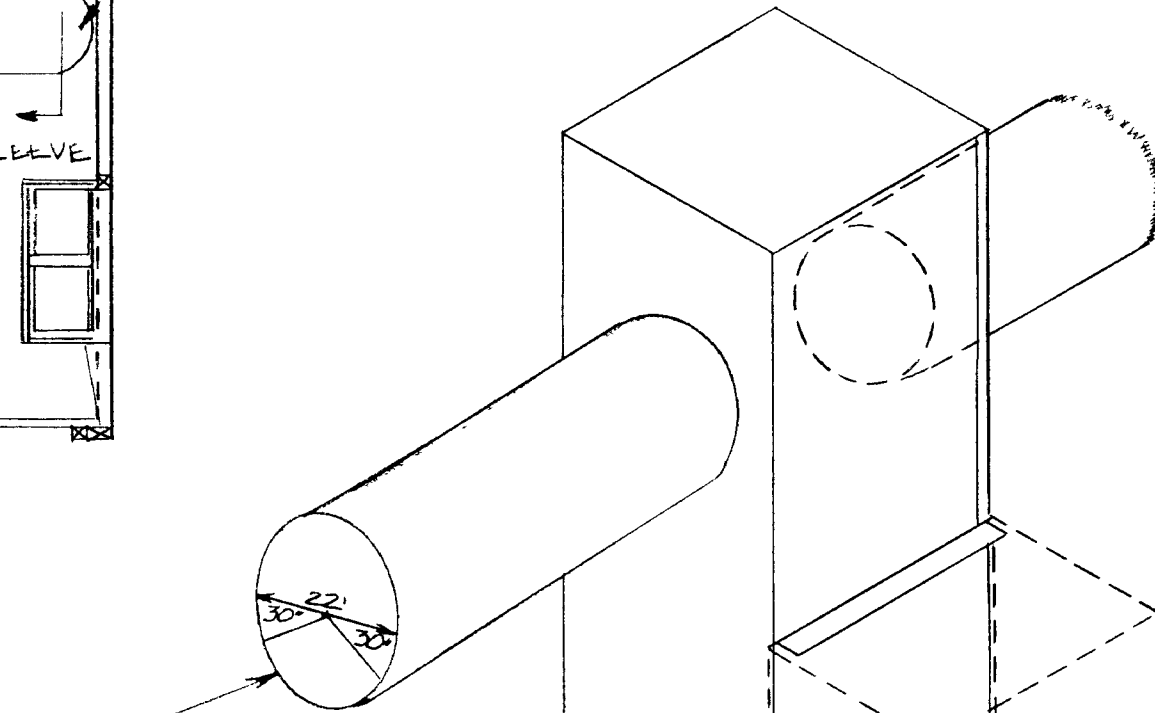


ALTERNATE HEATING SYSTEMS

END OF SLEEVE CLOSED WITH TWO 6 DISCHARGE HOLES (SEE SECTION A-A)

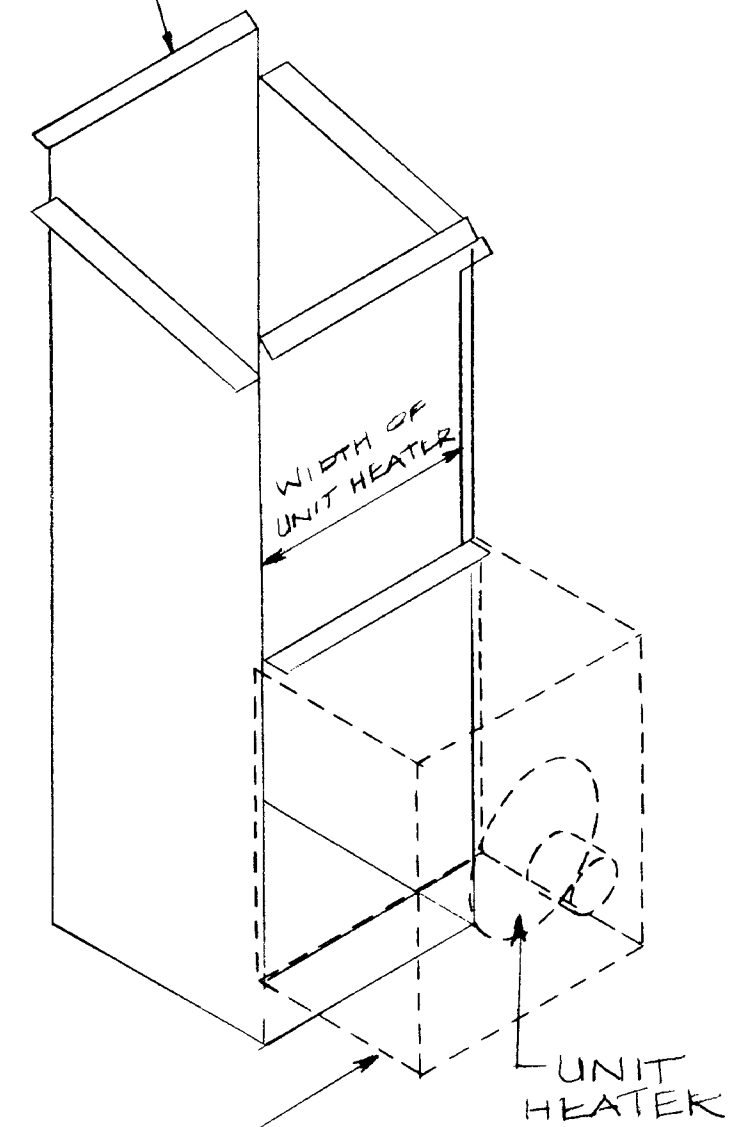
BEND EDGES TO PREVENT DAMAGE TO COVERING MATERIAL

22 DIA PLASTIC SLEEVE



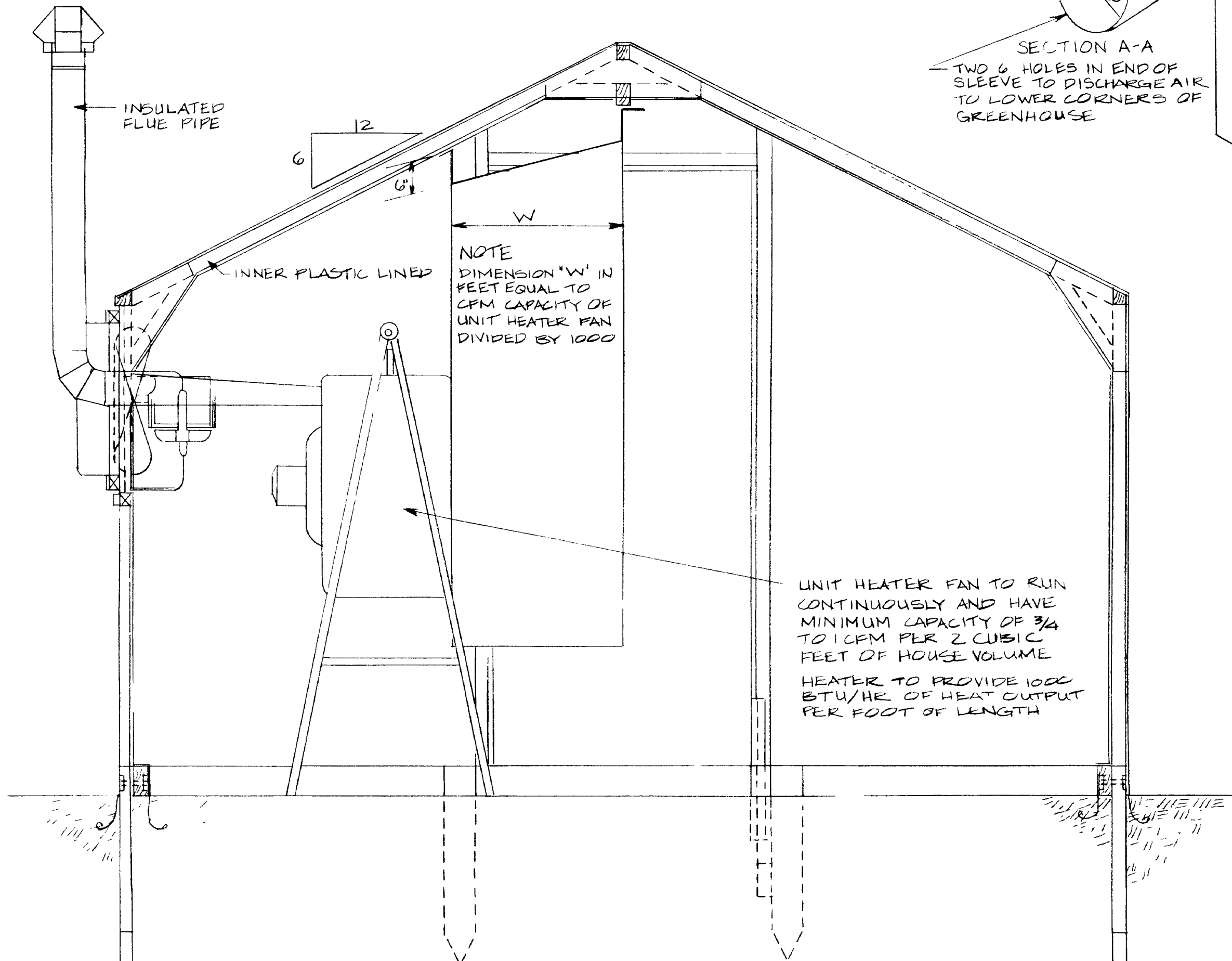
SECTION A-A
TWO 6 HOLES IN END OF SLEEVE TO DISCHARGE AIR TO LOWER CORNERS OF GREENHOUSE

UNIT HEATER
SLOT HEAD DISTRIBUTION
SYSTEM



AH HEATER
SYSTEM

NOTE:
FOR HEATER THERMOSTAT LOCATION
SEE SHEET #1



INSULATED FLUE PIPE

12
6

INNER PLASTIC LINED

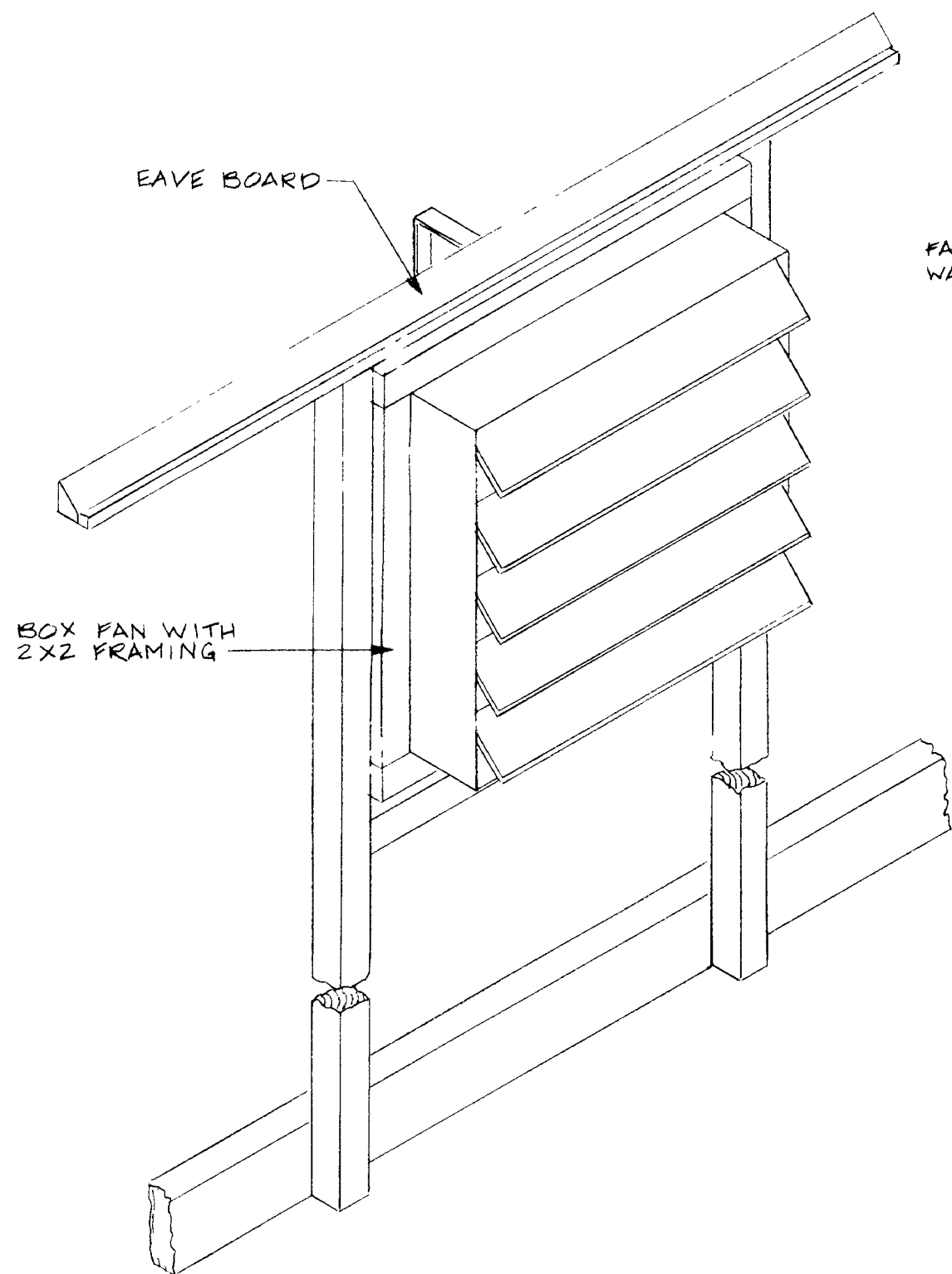
NOTE
DIMENSION "W" IN FEET EQUAL TO CFM CAPACITY OF UNIT HEATER FAN DIVIDED BY 1000

UNIT HEATER FAN TO RUN CONTINUOUSLY AND HAVE MINIMUM CAPACITY OF 3/4 TO 1 CFM PER 2 CUBIC FEET OF HOUSE VOLUME
HEATER TO PROVIDE 1000 BTU/HR. OF HEAT OUTPUT PER FOOT OF LENGTH

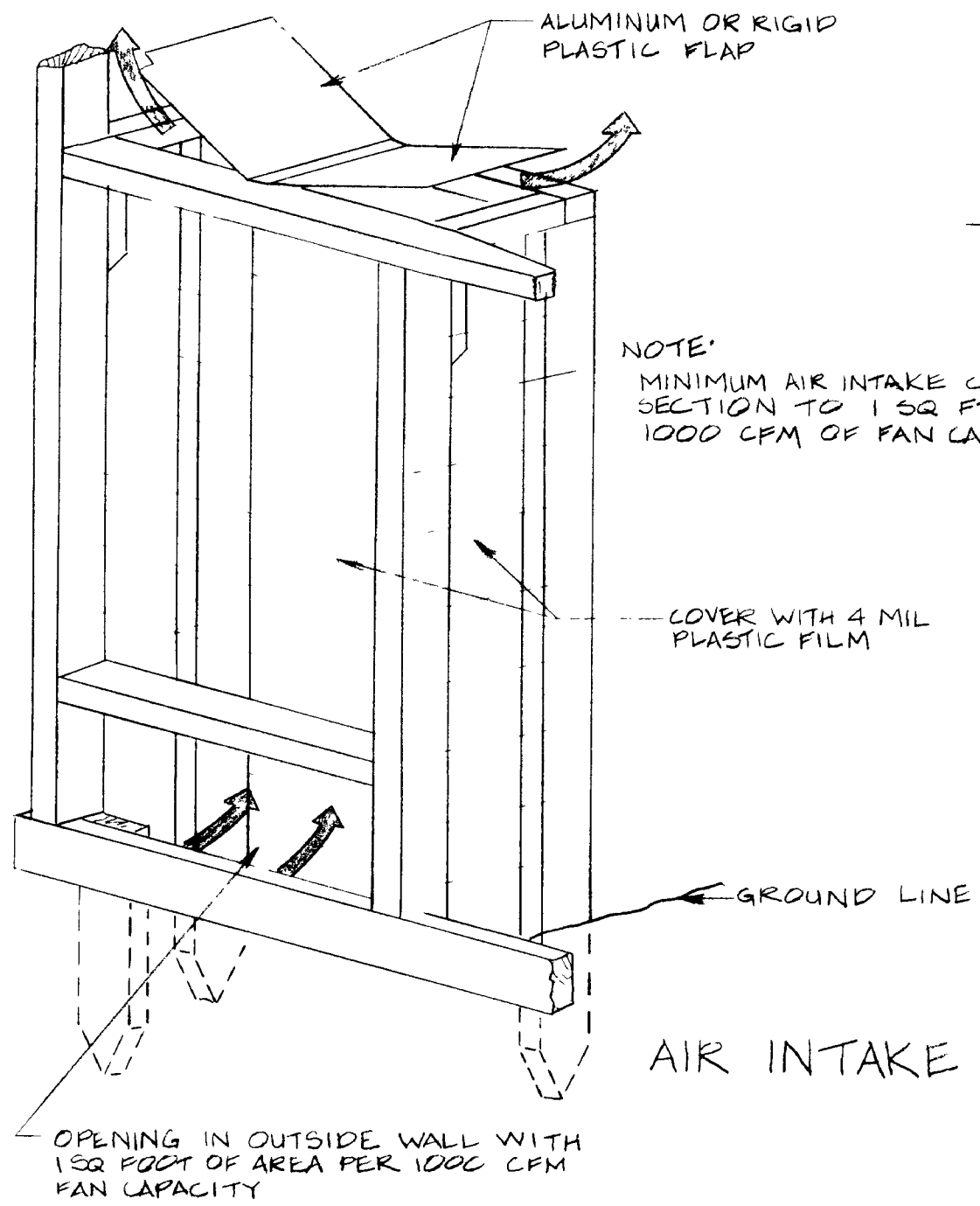
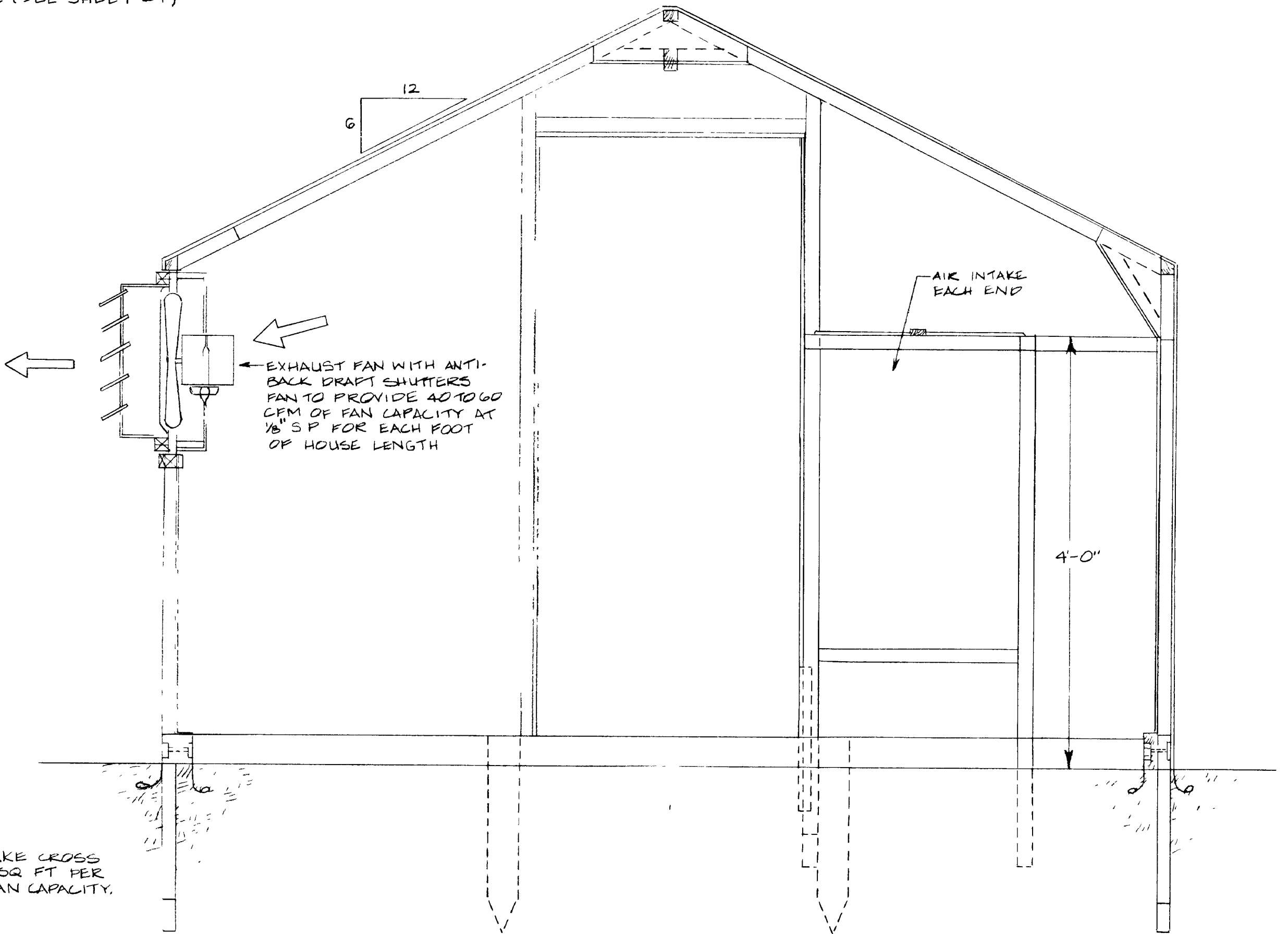
"KENTUCKY SPECIALTY" GREENHOUSE

COOPERATIVE EXTENSION SERVICE
AGRICULTURE AND HOME ECONOMICS
DEPARTMENT OF AGRICULTURAL ENGINEERING
COLLEGE OF AGRICULTURE
UNIVERSITY OF KENTUCKY
AND
U.S. DEPARTMENT OF AGRICULTURE COOPERATING

DESIGNED BY	SHEET 3 OF 4
CHECKED BY	PLAN NUMBER
DRAWN BY R L W W	KY. II. 771-3
DATE	
REVISIONS 7-2-85	

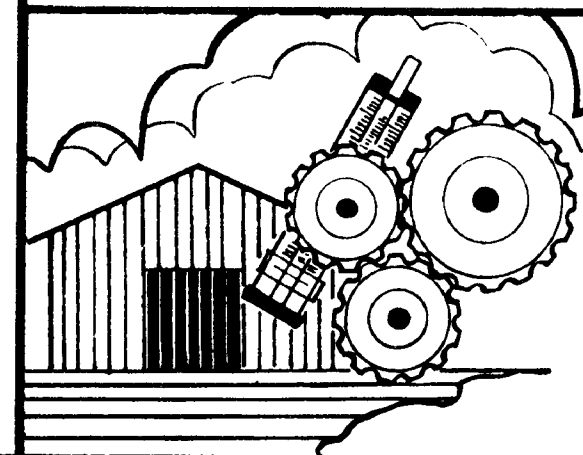


FAN LOCATED IN NORTH WALL (SEE SHEET #1)



NOTE FOR FAN THERMOSTAT LOCATION SEE SHEET #1

"KENTUCKY SPECIALTY" GREENHOUSE



COOPERATIVE EXTENSION SERVICE
 AGRICULTURE AND HOME ECONOMICS
 DEPARTMENT OF AGRICULTURAL ENGINEERING
 COLLEGE OF AGRICULTURE
 UNIVERSITY OF KENTUCKY
 AND
 U.S. DEPARTMENT OF AGRICULTURE COOPERATING

DESIGNED BY	SHEET 4 OF 4
CHECKED BY	PLAN NUMBER
DRAWN BY W.T.T.	KY. II. 771-3
DATE	
REVISIONS 6-85	