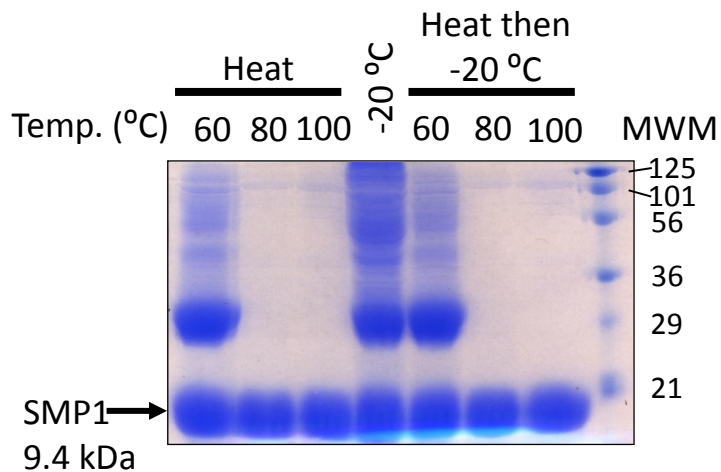


AT3G12960 (SMP1) is a boiling stable protein



*E. coli* lysates containing SMP1 were heated to 60, 80 or 100 °C for 10 min, centrifuged and the supernatant either boiled again in SDS-loading dye and electrophoresed directly (Heat) or frozen at -20 °C for 12 h prior to boiling and SDS-PAGE (15% total acrylamide) analysis (Heat then -20 °C). The middle lane (-20 °C) was the lysate that was frozen for 12 h but not heated before centrifugation and SDS-PAGE.