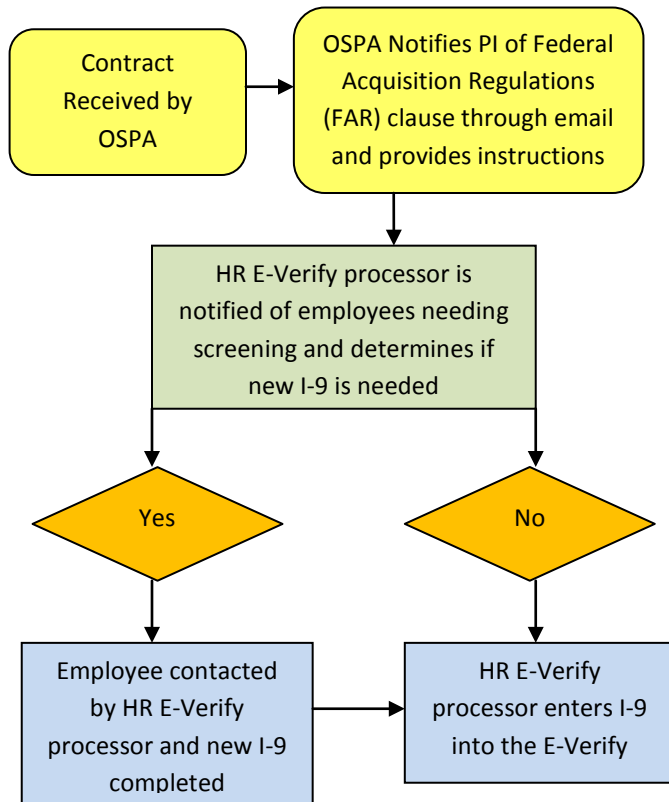


University of Kentucky Current Employees: E-Verify Flow Chart

When a department receives a federal contract containing the E-Verify clause, an email will be generated from the Office of Sponsored Projects Administration (OSPA) to the principle investigator (PI) and the departmental budget officer. Below is the process that will take place for the E-Verify screen. The University will have 30 days from the contract award date to complete this process.

Step 1: Initial Verification



Step 2: E-Verify Results

