



# FACT BOOKLET

## 2014-2015

**see blue.**<sup>TM</sup>  
*in everything we do.*

UNIVERSITY OF KENTUCKY

# Table of Contents

Letter from President Eli Capilouto	2-3	Private Giving	26
UK Mission and Vision	4	Grant and Contract Awards	27
Enrollment	5-9	Research and Development	28
First-year Student Profile	10-11	University Endowment	29
Retention and Graduation Rates	12-13	Library Collections	30
Degrees Conferred	14-16	Benchmark Institutions	31
Annual Tuition and Fees	17	Administrative Organization	32
Full-time Employees	18-19	Board of Trustees	33
Faculty Statistics	20-22	Administrative History	34
Faculty Salaries	23	UK Values	35
Budgeted Revenue and Expenditures	24-25		

## January 2015

We are proud to publish the 2014-15 Fact Booklet—a collection of current statistics about people and programs at the University of Kentucky. In accordance with KRS 164.250, this booklet provides important data to our stakeholders and the general public, including information on enrollment management; retention and graduation rates; research contracts, grants and expenditures; faculty salaries; and a summary of the 2014-2015 Operating and Capital Budget.

Last fall, UK's total enrollment achieved a new milestone. More than 30,000 students now pursue an advanced education at our University. More than one-fourth (27.5%) of our undergraduates now come from outside of Kentucky. For the third year in a row, UK welcomed the largest and most diverse first-year class to our campus. Nearly 5,200 students began their college studies in fall 2014, including 131 international students.

From new residence halls that are transforming the student living experience to classrooms and research space that advances learning and discovery, the University of Kentucky is becoming a national model for a thriving, public residential research campus.

Construction is underway the new Academic Science Building, a \$122 million facility which will revamp science education at UK. The building will be home to innovative lecture halls and groundbreaking TEAL (Technology Enabled Active Learning) classrooms. The University also continues work on a new home for the UK School of Art and Visual Studies. When completed, the building will provide innovative studio space for the art studio, art education and art history and visual studies programs. Students across all majors will take courses in this facility as they complete their UK Core requirements.

The University's commitment to providing healthy, affordable dining options continues to make progress. The 90, a new \$32 million academic support and dining facility on south campus is funded through a public private partnership with Aramark. It will be home to innovative, classrooms for Living and Learning Programs, offices for the LLP's, and many other student support spaces. It will also be home to the UK Food Connection, the new institute funded with a \$5 million investment from Aramark to promote the study of Kentucky food in partnership with the College of Food, Agriculture and Environment.

These priorities embolden our mission as a renowned flagship and land grant research university. They bolster our commitment to Kentucky – a covenant that has never been more vital. As we continue our work together we are building a stronger University of Kentucky—or better yet, a stronger University for Kentucky—and through it, a better future for our state.

Sincerely,

A handwritten signature in black ink, reading "Eli A. Capilouto". The signature is fluid and cursive, with the first name "Eli" being the most prominent.

Eli Capilouto  
President

# MISSION

The University of Kentucky is a public, land grant university dedicated to improving people's lives through excellence in education, research and creative work, service and health care. As Kentucky's flagship institution, the University plays a critical leadership role by promoting diversity, inclusion, economic development and human well-being.

The University of Kentucky:

- Facilitates learning, informed by scholarship and research;
- Expands knowledge through research, scholarship and creative activity; and
- Serves a global community by disseminating, sharing and applying knowledge.

The University, as the flagship institution, plays a critical leadership role for the Commonwealth by contributing to the economic development and quality of life within Kentucky's borders and beyond. The University nurtures a diverse community characterized by fairness and equal opportunity.

# VISION

The University of Kentucky will be one of the nation's 20 best public research universities.

-- The University of Kentucky Board of Trustees adopted the amended the Vision and Mission Statements on January 23, 2007 and modified it on March 27, 2012.

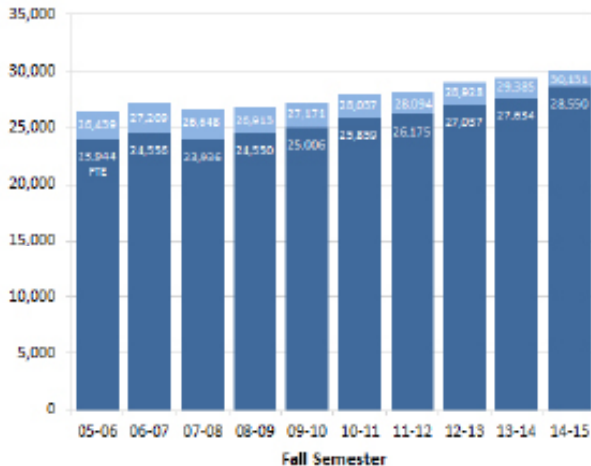
# ENROLLMENT – Headcount and Full-time Equivalent

## Fall 2014 Headcount

Level	Full-time	Part-time	Total
Undergraduate	20,690	1,533	22,223
Graduate*	5,779	1,201	6,980
<b>Subtotal (IPEDS)</b>	<b>26,469</b>	<b>2,734</b>	<b>29,203</b>
UG Auditors	0	51	51
Postdoctoral	230	4	234
House Staff	643	0	643
<b>Total (CPE)</b>	<b>27,342</b>	<b>2,789</b>	<b>30,131</b>

FTE calculations have been revised in accordance with CPE guidelines. The new method uses a formula that weights the number of student credit hours by students' degree level.

\*Note: Beginning in 2009-10, federal reporting guidelines for enrollments eliminated the first-professional degree category and established a new Doctor's Degree - Professional Practice category. These degree programs are now subsumed under the graduate classification.



# ENROLLMENT – Fall 2014 at a Glance

		<u>% of Total</u>
Men	14,335	47.6
Women	15,796	52.4
Total	30,131	100.0

Full-time	27,342	90.7
Part-time	2,789	9.3
Total	30,131	100.0

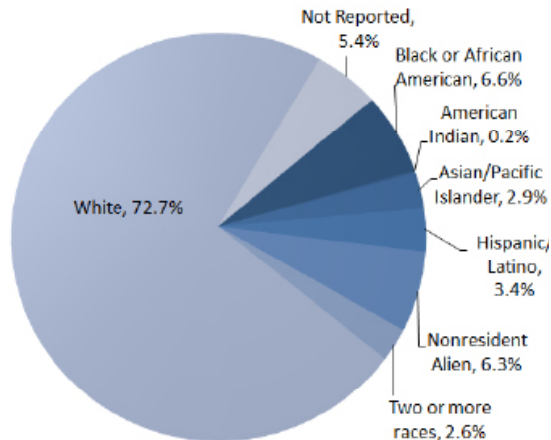
Resident	20,977	69.6%
Non-resident	9154	30.4%
Total	30,131	100.0%

		<u>% of Total</u>
Freshmen	6,390	21.2
Sophomores	4,366	14.5
Juniors	4,776	15.9
Seniors	6,193	20.6
UG Non-degree	549	1.8
<b>Subtotal Undergraduate</b>	<b>22,274</b>	<b>73.9</b>
Master/Specialist	2,382	7.9
Doctoral*	4,199	13.9
Graduate Non-degree	399	1.3
<b>Subtotal Graduate</b>	<b>6,980</b>	<b>23.2</b>
<b>House Staff/Post Doctoral</b>	<b>877</b>	<b>2.9</b>
<b>Total</b>	<b>30,131</b>	<b>100.0</b>

\*Note: Beginning in 2009-10, federal reporting guidelines for enrollments eliminated the first-professional degree category and established a new Doctor's Degree - Professional Practice category. These degree programs are included under the Doctoral classification.

# ENROLLMENT - Fall 2014 by Race/Ethnicity

	<u>Undergrad</u>	<u>Grad.</u>	<u>Post Doc.</u>	<u>House Staff</u>	<u>Total</u>
Black or African American	1,692	299	6	0	1,997
Amer. Indian/ Alaskan Native	38	18	1	0	57
Asian/Pacific Islander	592	242	25	0	859
Hispanic/Latino	845	186	2	0	1,033
International	811	940	119	30	1,900
White	16,984	4,834	76	2	21,896
Two or more races	684	86	2	0	772
Not Reported	628	375	3	611	1,617
<b>Total</b>	<b>22,274</b>	<b>6,980</b>	<b>234</b>	<b>643</b>	<b>30,131</b>

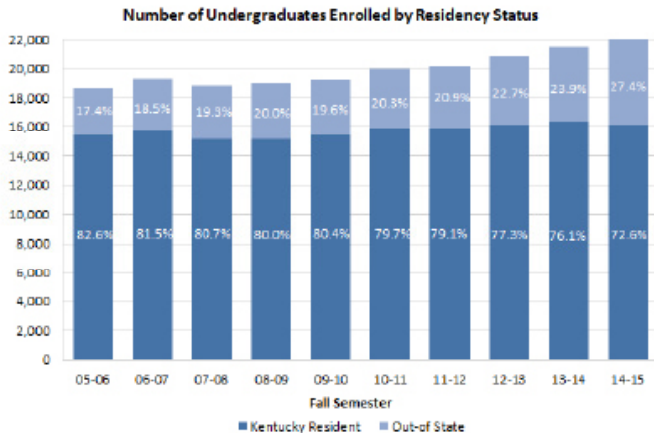


Total = 30,131



# UNDERGRADUATES - by Residency Status

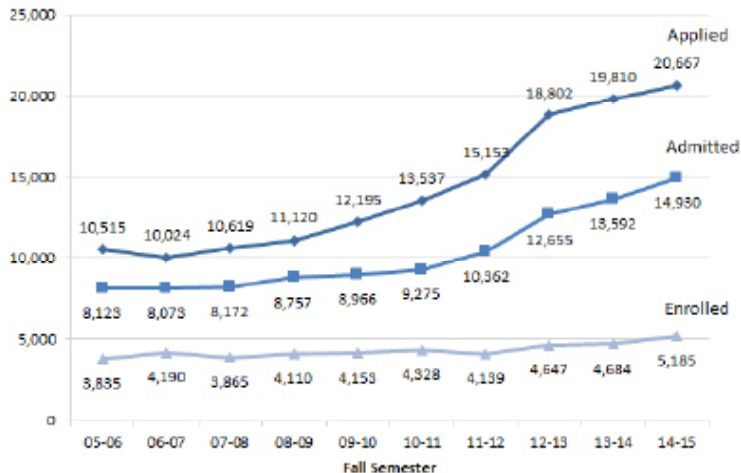
<u>Year</u>	<u>Kentucky Residents</u>	<u>Out-of-State Students</u>
Fall 2014	16,164	6,110
Fall 2013	16,367	5,128
Fall 2012	16,142	4,736
Fall 2011	15,949	4,203
Fall 2010	15,933	4,055
Fall 2009	15,457	3,760
Fall 2008	15,197	3,791
Fall 2007	15,196	3,634
Fall 2006	15,757	3,571
Fall 2005	15,481	3,251



# APPLIED, ADMITTED and ENROLLED

## First-year Students Fall 2014

Applied	20,667
Admitted	14,930
Enrolled	5,185
Admit. Rate	72.2%
Yield Rate	34.7%



# FIRST-YEAR STUDENT PROFILE

	<u>2010</u>	<u>2011</u>	<u>2012</u>	<u>2013</u>	<u>2014</u>
Total	4,328	4,139	4,647	4,684	5,185
Female	2,219	2,194	2,498	2,623	2,900
Black or African-American <sup>a</sup>	418	422	533	553	550
Out-of-State	1,012	1,073	1,442	1,401 <sup>b</sup>	1,932
International	47	56	110	95	131
Full-Time	4,282	4,082	4,588	4,619	5,144
Governor's Scholars and Governor's School for the Arts	371	394	427	417	384
Merit Scholars	33	32	70	105 <sup>c</sup>	113 <sup>c</sup>
Valedictorians	147	154	208	182	170

<sup>a</sup> This number includes students who reported two or more races, one of which was "Black or African American".

<sup>b</sup> Includes International Students.

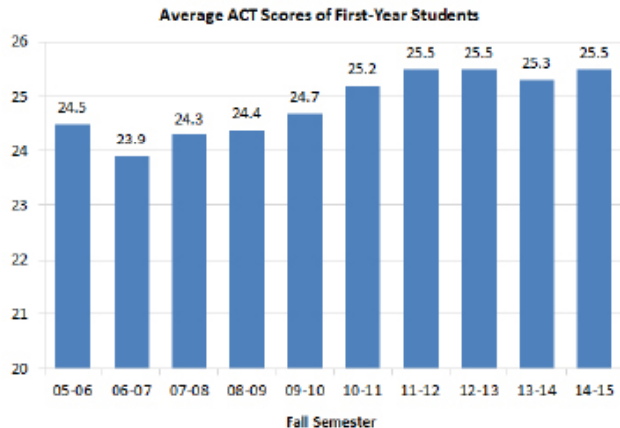
<sup>c</sup> Number includes National Merit, National Achievement and National Hispanic Finalists



# ACT Scores - Entering First-year Students

<u>Year</u>	<u>N</u>	<u>Mean</u>	<u>25th/75th Percentile</u>
Fall 2014	4,707	25.5	21/28
Fall 2013	4,326	25.3	22/28
Fall 2012	4,240	25.5	23/28
Fall 2011	3,865	25.5	23/28
Fall 2010	4,049	25.2	22/28
Fall 2009	3,906	24.7	22/28
Fall 2008	3,825	24.4	22/27
Fall 2007	3,532	24.3	21/27
Fall 2006	3,864	23.9	21/26
Fall 2005	3,453	24.5	22/27

Note: Some students submit SAT scores rather than ACT scores. These students' scores are not reflected in the table and graph.

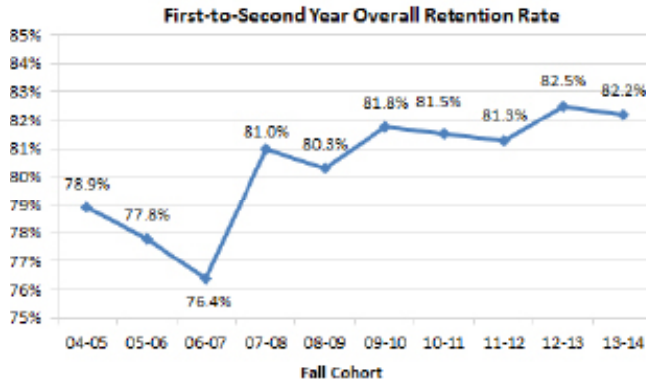


# RETENTION RATE

## First-to-second Year Retention Rate\*

<u>Cohort</u>	<u>Overall</u>	<u>Black or African</u>		<u>Other</u>
		<u>White</u>	<u>American</u>	
<b>2013</b>	82.2	83.0	72.4	83.9
<b>2012</b>	82.5	83.3	76.7	81.7
<b>2011</b>	81.3	82.2	73.8	82.8
<b>2010</b>	81.5	81.8	80.9	80.3
<b>2009</b>	81.8	83.1	71.2	80.6
<b>2008</b>	80.3	80.5	75.3	84.4
<b>2007</b>	81.0	81.2	80.0	79.5
<b>2006</b>	76.4	76.3	76.6	77.7
<b>2005</b>	77.8	78.0	76.1	76.4
<b>2004</b>	78.9	79.6	69.0	80.5

\*Retention rates apply to first-time, full-time, degree-seeking students.



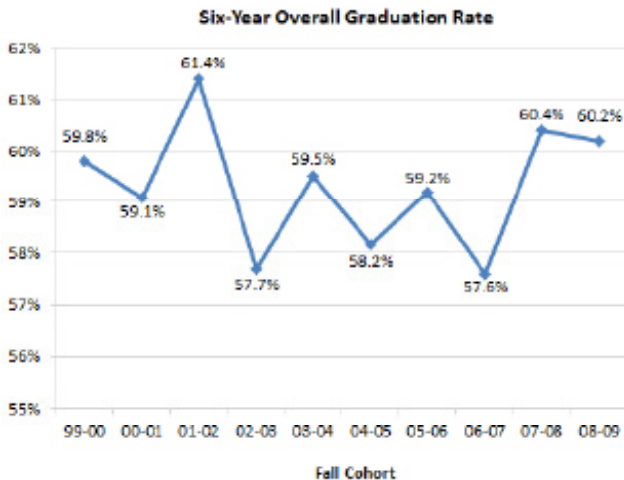
# GRADUATION RATE

## Six-year Graduation Rate\*

<u>Cohort</u>	<u>Overall</u>	<u>White</u>	<u>Black or African American</u>	<u>Other</u>
2008	60.2	62.5	42.9	58.7
2007	60.4	61.8	43.7	59.0
2006	57.6	58.4	49.8	55.9
2005	59.2	59.7	46.8	58.2
2004	58.2	60.1	38.7	51.5
2003	59.6	60.5	42.9	62.8
2002	57.7	58.6	47.6	51.1
2001**	61.4	62.5	50.3	49.6
2000	59.1	60.6	45.0	50.5
1999	59.8	60.8	46.2	57.1

\*Graduation rates apply to first-time, full-time, degree-seeking students.

\*\*Reflects a correction made after IPEDS submission.



# DEGREES CONFERRED

## 2013-2014

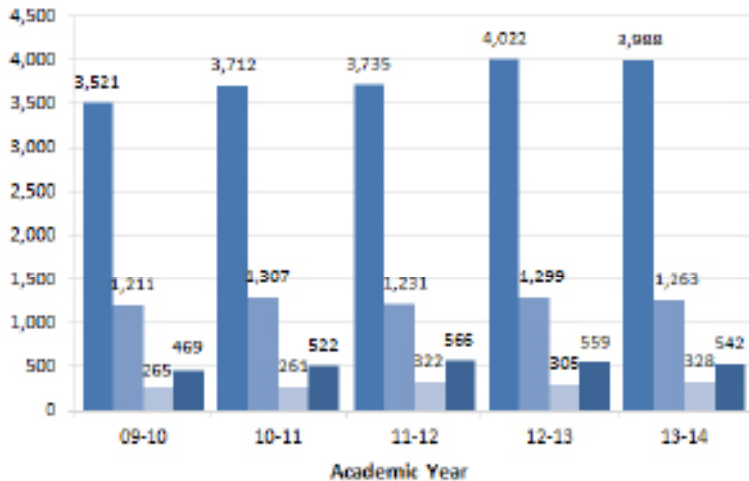
Baccalaureate 3,988

Master's/Specialist's 1,263

Doctor's Degree:

Research/Scholarship 328

Professional Practice 542



# DEGREES CONFERRED - By College

## 2013-2014

<u>College</u>	<u>Bacc.</u>	<u>Mast.*</u>	<u>Doc.**</u>
Agriculture	637	93	38
Arts & Sciences	1044	141	108
Business & Economics	584	167	10
Comm. & Information	369	110	10
Dentistry	-	7	56
Design	73	29	-
Education	416	214	34
Engineering	427	80	44
Fine Arts	108	35	12
Grad. School	-	68	4

<u>College</u>	<u>Bacc.</u>	<u>Mast.*</u>	<u>Doc.**</u>
Health Sciences	66	112	79
Law	-	-	128
Medicine	-	28	147
Nursing	208	-	31
Pharmacy	-	2	147
Public Health	-	80	19
Social Work	56	97	3
Total	3,988	1,263	870

\* Includes Specialist degrees

\*\* Includes Doctor's Degrees (Research/Scholarship) and Doctor's Degrees (Professional Practice)

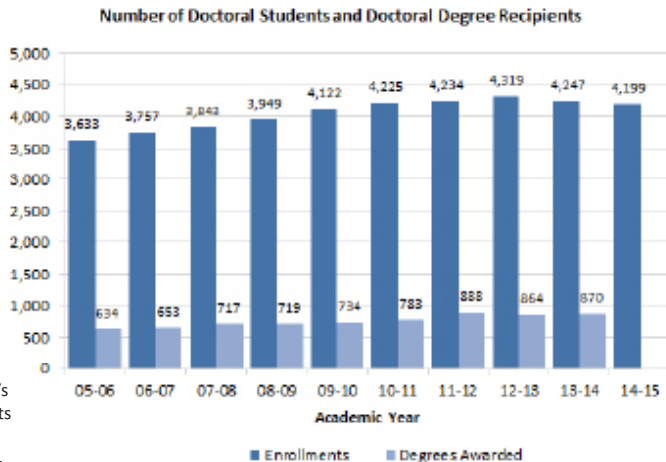


# DOCTORATES - Enrollments and Degrees Awarded

<u>Year</u>	<u>Fall Enrollment</u>	<u>Degrees Awarded</u>
<b>2014-15</b>	4,199	
<b>2013-14</b>	4,247	870
<b>2012-13</b>	4,319	864
<b>2011-12</b>	4,234	888
<b>2010-11</b>	4,225	783
<b>2009-10</b>	4,122	734
<b>2008-09</b>	3,949	719
<b>2007-08</b>	3,843	717
<b>2006-07</b>	3,757	653
<b>2005-06</b>	3,633	634

Note1: Federal reporting guidelines have eliminated the first-professional degree category and established a new Doctor's Degree - Professional Practice category. Doctoral enrollments and degree recipients have been revised to include enrollments and degrees from former first-professional programs.

Note2: Enrollments are based on the fall semester of a given academic year. The number of degree recipients for 2013-14 is not yet available.



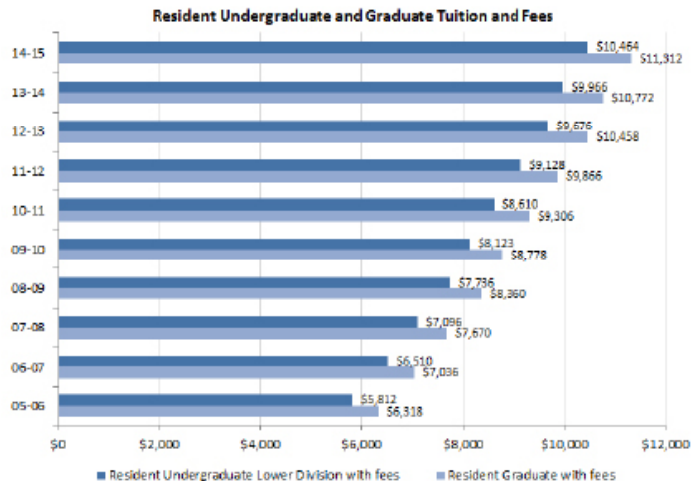
# ANNUAL TUITION and FEES

## 2014-2015

<u>Resident</u>	<u>Tuition</u>	<u>Fees</u>
Graduate	\$ 10,099	\$ 1,213
Undergraduate		
- Lower Division	9,251	1,213
- Upper Division	9,555	1,213
<u>Non-resident</u>	<u>Tuition</u>	<u>Fees</u>
Graduate	\$ 23,451	\$ 1,213
Undergraduate		
- Lower Division	21,521	1,213
- Upper Division	21,829	1,213

Note 1: The undergraduate tuition rate in the graph applies to lower division students.

Note 2: Several graduate programs (e.g., MBA) have differential tuition rates.



# FULL-TIME EMPLOYEES

**2014-2015**

<b><u>Full-Time Employees</u></b>	President's Office	Educational Units	Provost		Health Affairs	Research	Total	% Total
			Administration/ Support	Finance and Administration				
Exec./Admin./Managerial	48	226	80	75	109	39	577	4.6%
Faculty	0	2243	2	0	0	1	2,246	18.0%
Library Faculty	0	6	52	0	0	0	58	0.5%
Other Professional	200	1963	372	242	1559	257	4,593	36.8%
Secretarial/Clerical	76	1157	201	156	641	50	2,281	18.3%
Tech./Paraprofessional	25	801	43	139	404	82	1,494	12.0%
Skilled Crafts	6	22	1	139	0	3	171	1.4%
Service/Maintenance	9	175	19	662	162	31	1,058	8.5%
<b>Total</b>	<b>364</b>	<b>6,593</b>	<b>770</b>	<b>1,413</b>	<b>2,875</b>	<b>463</b>	<b>12,478</b>	<b>100.0%</b>

Note 1: Percentages may not total properly due to rounding.

Note 2: The President's Office includes staff from the Athletics Department and the Offices of the General Counsel, Institutional Advancement, and Commercialization and Economic Development.

Note 3: Starting in 2006-07, library faculty are reported to the federal government in the other professional category. For this publication, library faculty are classified separately.

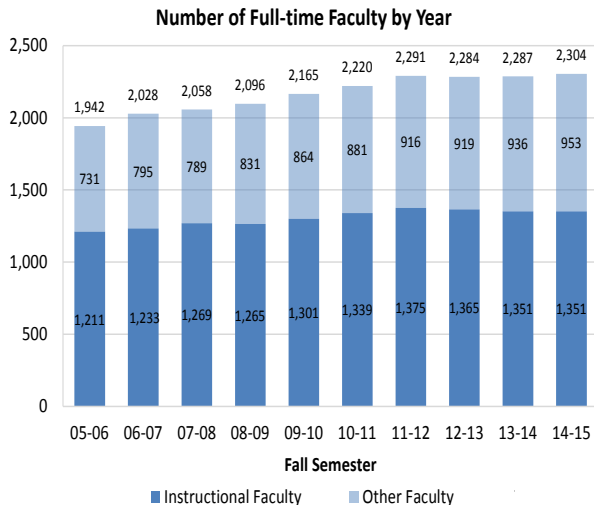
# FULL-TIME EMPLOYEE DEMOGRAPHICS

## 2014-2015

<u>Full-time Employees</u>	<u>Black or African American</u>	<u>American Indian/ Alaskan Native</u>	<u>Asian/ Pacific Islander</u>	<u>Hispanic/ Latino</u>	<u>White</u>	<u>Two or more races</u>	<u>Un- known</u>	<u>Female</u>	<u>Male</u>
Exec./Admin./Managerial	20	0	9	3	542	3	0	282	295
Faculty	79	2	298	64	1,789	12	2	863	1383
Library Faculty	2	0	2	0	54	0	0	40	18
Other Professional	195	2	207	53	4,104	32	0	2959	1634
Secretarial/Clerical	256	0	26	23	1,956	19	1	1995	286
Tech./Paraprofessional	128	2	48	23	1,280	13	0	931	563
Skilled Crafts	18	0	1	0	151	1	0	2	169
Service/Maintenance	289	0	16	5	740	8	0	376	682
<b>Total</b>	<b>987</b>	<b>6</b>	<b>607</b>	<b>171</b>	<b>10,616</b>	<b>88</b>	<b>3</b>	<b>7,448</b>	<b>5,030</b>

# FULL-TIME FACULTY - Historical Trends

	<b>Instructional Faculty*</b>	<b>Other Faculty</b>
<b>2014-2015</b>	1,351	953
<b>2013-2014</b>	1,351	936
<b>2012-2013</b>	1,365	919
<b>2011-2012</b>	1,375	916
<b>2010-2011</b>	1,339	881
<b>2009-2010</b>	1,301	864
<b>2008-2009</b>	1,265	831
<b>2007-2008</b>	1,269	789
<b>2006-2007</b>	1,233	795
<b>2005-2006</b>	1,211	731



\*Note: Instructional faculty in preclinical and clinical medicine are not included.

# FACULTY DEMOGRAPHICS

## Tenured and Tenure-track Faculty 2014-2015

	<u>Black or African</u>		<u>Asian</u>		<u>Hispanic</u>		<u>White</u>		<u>Multiple</u>		<u>Not reported</u>	
	<u>M</u>	<u>F</u>	<u>M</u>	<u>F</u>	<u>M</u>	<u>F</u>	<u>M</u>	<u>F</u>	<u>M</u>	<u>F</u>	<u>M</u>	<u>F</u>
<u>Full-Time Faculty</u>												
Professors/Lib. I	5	5	65	7	8	2	425	134				
Associate Professors/Lib. II	19	15	39	23	5	7	272	176	4			
Assistant Professors/Lib. III	7	12	42	20	14	5	135	114	2	4		2
Instructors/Lib. IV							1	2				
<b>Total</b>	<b>31</b>	<b>32</b>	146	50	27	14	833	426	6	4	0	2

# FACULTY - By Rank and Title Series: 2014-2015

## Tenured/Tenure Track

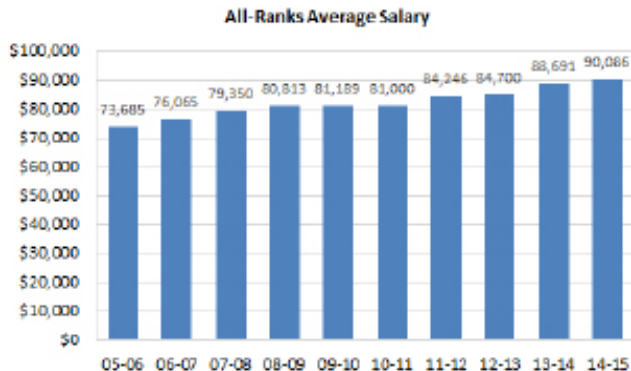
<u>Rank</u>	<u>Regular</u>	<u>Librarian</u>	<u>Extension</u>	<u>Spec. Title</u>	<u>Total</u>
Professors/Lib. I	517	22	39	73	651
Associate Professors/Lib. II	407	27	19	107	560
Assistant Professors/Lib. III	284	6	10	57	357
Instructors/Lib. IV		3			3
<b>Total</b>	<b>1,208</b>	<b>58</b>	<b>68</b>	<b>237</b>	<b>1,571</b>

## Non-tenure Track

<u>Rank</u>	<u>Clinical</u>	<u>Research</u>	<u>Lecturer</u>	<u>Other</u>	<u>Total</u>
Professors	35	2		2	<b>39</b>
Associate Professors	89	15			<b>104</b>
Assistant Professors	307	65		4	<b>376</b>
Instructors	20		176	18	<b>214</b>
<b>Total</b>	<b>451</b>	<b>82</b>	<b>176</b>	<b>24</b>	<b>733</b>

# FACULTY SALARIES

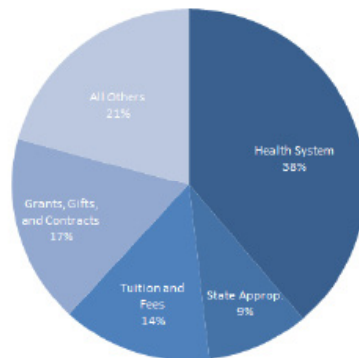
<u>Fall</u>	<u>All-ranks</u> <u>Average Salary</u>
2014	\$ 90,086
2013	88,691
2012	84,700
2011	84,246
2010	81,000
2009	81,189
2008	80,813
2007	79,350
2006	76,065
2005	73,685





# REVENUE (In Millions)

<u>Source of Funds</u>	<u>Revised Budget</u>	<u>Budget</u>
	<u>2013-14</u>	<u>2014-15</u>
State Appropriations	\$283.9	\$279.6
Student Tuition and Fees	380.0	411.7
County Appropriations	22.1	22.8
Endowment and Investment Income	22.1	23.3
Federal Appropriations	17.1	17.2
Gifts, Grants and Contracts	478.9	524.4
Recoveries of Facilities and Admin. Costs	41.5	42.5
Sales and Services	45.5	48.8
Hospital Services	994.3	1,169.2
Auxiliary Enterprises	188.9	205.7
Appropriated Fund Balances - University	248.7	260.4
Other	5.1	5.2
<b>Total</b>	<b>\$2,728.1</b>	<b>\$3,010.8</b>



**2014-2015 Budget**

# EXPENDITURES (In Millions)

<u>Program</u>	<u>Revised Budget 2013-14</u>	<u>Budget 2014-15</u>
Instruction	\$396.7	\$406.9
Research	273.2	285.7
Public Service	333.2	378.6
Libraries	25.6	26.1
Academic Support	111.1	91.5
Student Services	36.5	39.0
Institutional Support	151.2	197.2
Operations and Maintenance	74.6	76.8
Student Financial Aid	135.4	169.5
Auxiliary Enterprises	164.2	169.5
Hospital Services	938.8	1022.5
Transfers		
Capital Transfers	16.6	
Mandatory Transfers	71.0	76.9
Total	\$2,728.1	\$2,940.2

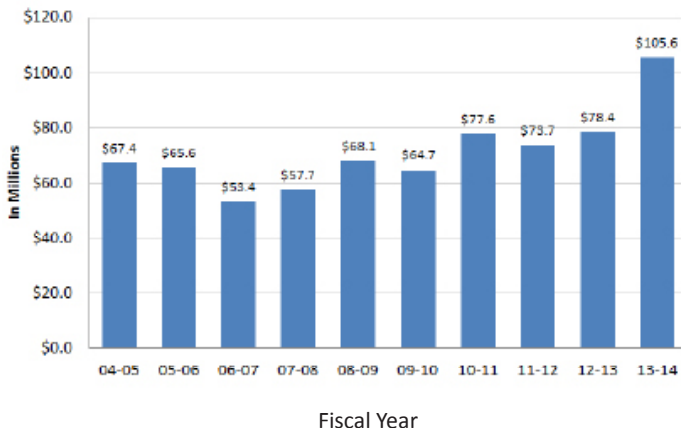
<u>Category</u>	<u>Revised Budget 2013-14</u>	<u>Budget 2014-15</u>
Personnel Services	\$1,300.1	\$1,255.2
Operating Expenses	1,159.1	1,096.8
Financial Aid	135.4	123.8
Capital Outlay	45.9	63.9
Transfers		
Capital Transfers	16.6	70.6
Mandatory Transfers	71.0	76.9
Total	\$2,728.1	\$2,687.2

# PRIVATE GIVING (In Millions)

## Fiscal Year 2013-2014

Alumni	\$ 21.5
Non-alumni	15.5
Corporations	20.9
Foundations	36.5
Trusts/Associations	11.3
<b>Total</b>	<b>\$105.6*</b>

\*Source amounts do not total properly due to rounding.



# GRANT and CONTRACT AWARDS (In Millions)

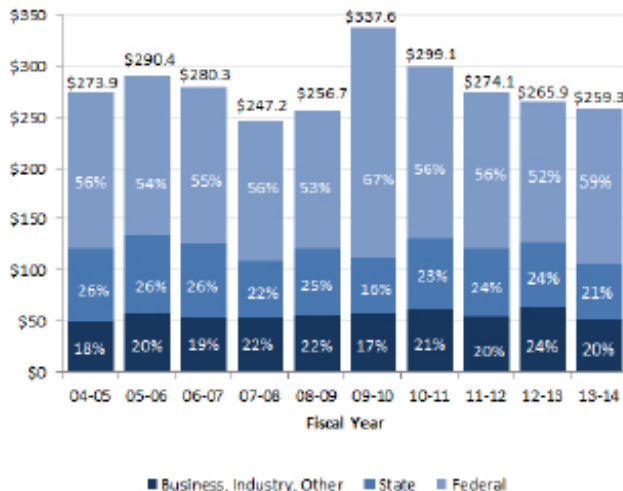
## 2013-2014

### By Category of Support

Instruction	\$9.1
Research	\$186.3
Public Service	\$62.2
Other	\$1.7
<b>Total</b>	<b>\$259.3</b>

### By Source

Federal	59%
State	21%
Business, Industry, Other	20%



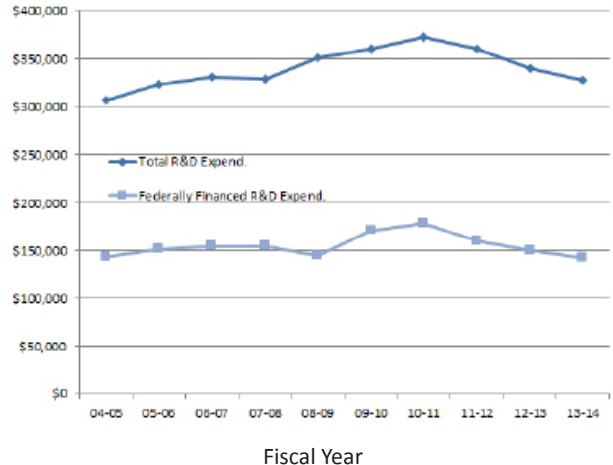
# RESEARCH and DEVELOPMENT (In Thousands)

Fiscal Year	Total R&D Expenditures*	Federally Financed R&D Expenditures*
2014	\$ 328,239	\$ 142,312
2013	339,764	150,468
2012	360,774	159,678
2011	372,932	179,161
2010**	359,944	171,528
2009	351,943	144,221
2008	329,354	154,260
2007	331,606	154,688
2006	323,958	151,238
2005	306,653	142,794

\*As reported to the National Science Foundation for science and engineering disciplines; expenditures for FY 2008 and FY 2009 have been revised.

\*\* The FY 2010 Expenditure amount includes all fields, not just science and engineering.

Research and Development Expenditures

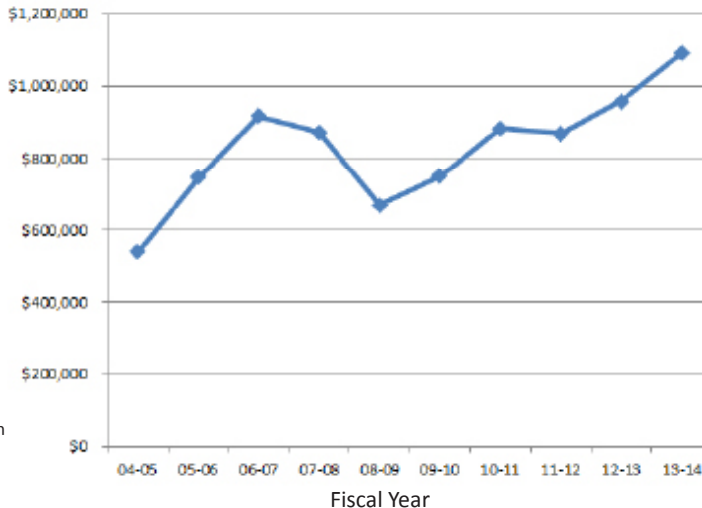


# UNIVERSITY ENDOWMENT (In Thousands)

<u>Fiscal Year</u>	<u>Market Value</u>
2014	\$ 1,090,855
2013	957,784
2012	868,316
2011	881,860
2010	748,676
2009	668,008
2008	871,861
2007	916,590
2006	746,114
2005	538,384

Note: In 2006, the Chandler Medical Center University Hospital Quasi-Endowment Fund for \$150 million was established, accounting for the large increase over the 2005 total.

Market Value of University Endowment



# LIBRARY COLLECTIONS

	<u>2011-2012</u>	<u>2012-2013</u>	<u>2013-2014</u>
Volumes Held	4,023,142	4,107,758	4,608,331

The UK Libraries are home to more than 4.6 million volumes. UK Libraries' collections also include access to more than 400 licensed networked electronic databases, a large collection of e-journals and over 1.1 million electronic books accessible in the UK Libraries 12 service points and also available to faculty and students off-campus via a proxy server. In addition, the collections include: approximately 244,000 maps; a collection of current state, national and international newspapers; 9,000 interviews in the Louis B. Nunn Center for Oral History; the University Archives and Records Program; the Wendell H. Ford Public Policy Research Center; the Audio-Visual Archives; the Bert T. Combs Appalachian Collection; the Public Policy Archives; the Rare Book Collection which includes the W. Hugh Peal Collection of 19th century English and related literature; and the Preservation Reformatting Center. Digital Library Services identifies and implements digital library initiatives that support teaching and research. The Digital Library Service also makes unique holdings available to the world and creates digital content for the Kentucky Digital Library including electronic texts, digitized photographs, images and archival finding aids. UK Libraries is a regional depository for U.S. government publications, and also a depository for Canadian government publications and European Union publications. British Parliamentary Papers, Kentucky government publications, and technical reports from federal agencies are selectively collected.



# CURRENT BENCHMARK INSTITUTIONS

Michigan State University

Ohio State University

University of Arizona

University of California – Davis

University of Florida

University of Iowa

University of Michigan – Ann Arbor

University of Minnesota – Twin Cities

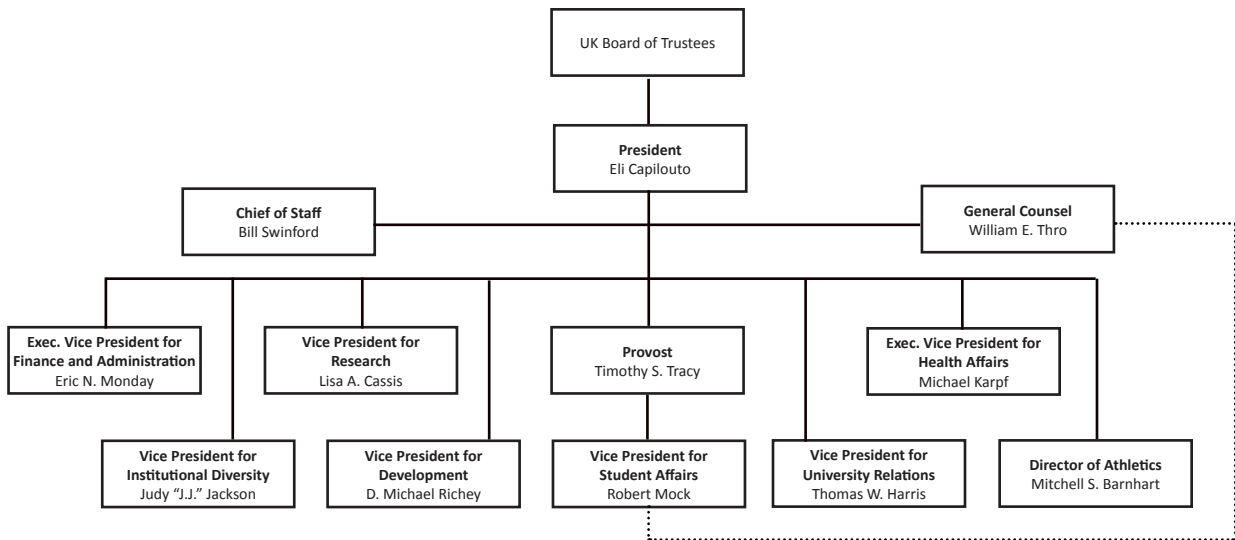
University of Missouri - Columbia

University of North Carolina – Chapel Hill

University of Wisconsin – Madison



# ADMINISTRATIVE ORGANIZATION



# BOARD of TRUSTEES

<b>C.B. Akins, Sr.</b>	Lexington	(2017)	<b>Cammie Deshields Grant</b>	Alumni Member	(2020)
<b>James H. Booth</b>	Lovely	(2019)	<b>Robert Grossman</b>	Faculty Member	(2017)
<b>William C. Britton</b>	Louisville	(2017)	<b>David V. Hawpe</b>	Louisville	(2019)
<b>Edward Britt Brockman</b>	Louisville	(2014)	<b>Kelly Sullivan Holland</b>	Alumni Member	(2018)
<b>Sheila Brothers</b>	Staff Member	(2016)	<b>Jacob (Jake) Ingram</b>	Student Member	(2015)
<b>Mark P. Bryant</b>	Paducah	(2018)	<b>Terry Mobley</b>	Lexington	(2016)
<b>Angela L. Edwards</b>	Louisville	(2019)	<b>James W. Stuckert</b>	Prospect	(2015)
<b>William Stamps Farish, Jr.</b>	Versailles	(2016)	<b>Robert D. Vance</b>	Maysville	(2020)
<b>Oliver Keith Gannon</b>	Mt. Sterling	(2016)	<b>John F. Wilson</b>	Faculty Member	(2016)
<b>Carol Martin“Bill” Gatton</b>	Tennessee	(2015)	<b>Barbara Young</b>	Lexington	(2015)

# ADMINISTRATIVE HISTORY

- 1865** Agricultural and Mechanical College (A&M) established as part of Kentucky University
- 1869** James K. Patterson became President of A&M
- 1878** A&M separated from Kentucky University
- 1882** A&M moved to current location in Lexington
- 1885** Ag. Experiment Station opened
- 1889** College of Agriculture established
- 1908** College of Arts and Sciences and College of Law established; A&M name changed to "State University, Lexington, Kentucky"
- 1909** University Library established
- 1911** Henry S. Barker became President of State University
- 1916** State University renamed University of Kentucky
- 1917** Frank L. McVey became President of UK; Graduate School established
- 1918** College of Engineering established
- 1923** College of Education established
- 1925** College of Business and Economics established
- 1941** Herman L. Donovan became President
- 1947** College of Pharmacy moved to UK
- 1956** Frank G. Dickey became President
- 1957** Ashland Extension Center established
- 1960** Medical Center established; College of Medicine admitted first class; College of Nursing admitted first class; Henderson Extension Center and Southeast Extension Center established
- 1962** College of Dentistry admitted first class; University Hospital opened
- 1963** John W. Oswald became President
- 1964** Community College System established under UK; College of Architecture established
- 1965** Lexington Technical Institute (LTI) established
- 1966** College of Allied Health Professions established
- 1967** College of Home Economics established
- 1968** Albert D. Kirwan became President
- 1969** College of Social Work established; Otis A. Singletary became President
- 1970** College of Library and Information Science established
- 1976** College of Communications and College of Fine Arts established
- 1982** University reorganized with a Central Administration and three sectors headed by Chancellors (Lexington Campus, Medical Center, and Community College System)
- 1984** LTI became Lexington Community College
- 1987** David P. Roselle became President
- 1990** Charles T. Wethington, Jr. became President
- 1993** College of Communications and Information Studies established
- 1998** William T. Young Library opened; All Community Colleges (except LCC) transferred to the KCTCS
- 2001** Lee T. Todd, Jr. became President; University reorganized with a Provost model
- 2002** College of Design established
- 2004** LCC transferred to the KCTCS; College of Public Health established
- 2011** Eli Capilouto became President

# VALUES

The University of Kentucky is guided by its core values:

- *Integrity*
- *Excellence*
- *Mutual Respect and Human Dignity*
- *Diversity and Inclusion*
- *Academic Freedom*
- *Personal and institutional responsibility and accountability*
- *Shared Governance*
- *A sense of community*
- *Work-life Sensitivity*
- *Civic Engagement*
- *Social Responsibility*

-- The University of Kentucky Board of Trustees adopted the amended the Values Statement on January 23, 2007 and modified it on March 27, 2012.

