



# **EVPFA Report**

Dr. Eric N. Monday  
Executive Vice President for Finance and Administration  
September 13, 2019



# Agenda

- Dining Update
- UK HealthCare Electronic Health Records Lease Update
- Capital Project Update
  - Recently Completed
  - Under Construction
  - In Design



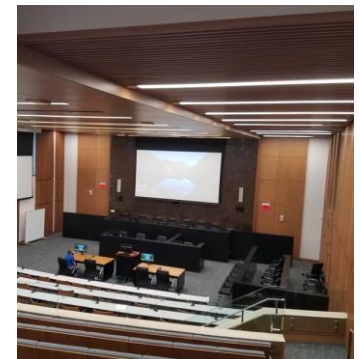
# Recently Completed Project



## Law Building Capital Project

Cost: \$56 Million

- Complete renovation and 34,000 Gross Square Feet addition to existing building
- Completion: August 8, 2019





# Recently Completed Project



## Expand and Renovate Grain Center of Excellence in Princeton, KY Capital Project

Cost: \$16.8 Million

- Renovation included a 17,000 Gross Square Feet addition; upgrades to existing space; replacement of floor and ceiling tiles, windows, lighting, HVAC system, and fume hoods; and other work
- New and existing office area was completed in July 2019 with the remaining work scheduled for substantial completion in September 2019







# Recently Completed Project



## **Greek Housing – Delta Delta Delta Sorority Renovation and Expansion Capital Project**

Cost: \$2.5 Million

- New meeting room for 300 and living spaces for 10 additional residents in an addition of 5,600 Gross Square Feet
- Renovated restrooms and foyer,
- Updated dining hall and other public spaces





# Recently Completed Project



## New Greek Housing – Alpha Gamma Rho Fraternity Capital Project

Cost: \$4.9 Million

- 21,000 Gross Square Feet facility was completed in Summer 2019
  - Space for 42 members in two four-bed units and 17 two-bed units
  - Living areas, dining areas, commercial kitchen, laundry area, house manager's apartment, and study room



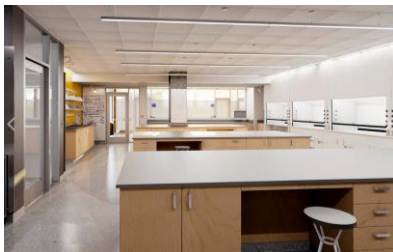
## Other Greek Housing Projects

- Alpha Chi Omega (Sorority)
- Beta Theta Pi (Fraternity)





# Modernization Under Construction



## Chemistry-Physics Building (Phase I and II) Capital Project

Cost: \$58 Million

- Phase 1 work includes conversion of the third floor into a modern research facility
  - Abatement and demolition is complete
- Phase 2 includes student collaboration space, replacement of the roof, and updates to the building's existing facade



# Modernization Under Construction



## Enoch Grehan Journalism Building Capital Project

Cost: \$23 Million

- Modernization of the Enoch Grehan Journalism Building will completely restore and modernize the 1950's era building
- Complete replacement of building systems
- A connector will serve as the main entry and will provide access to both the Grehan Building and McVey Hall
- Located within the building will be four classrooms, office space, student study space, and senior design studio
- Completion: December 2019





# Under Construction



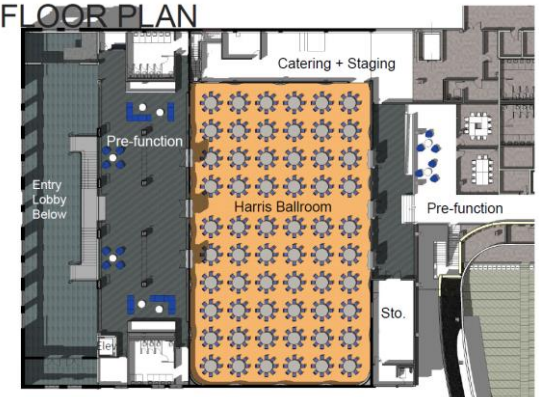
## Student Center Space - Harris Ballroom Capital Project

Cost: \$5.5 Million

- Fit up of the existing Harris Ballroom
- Anticipated completion: July 2021



## FLOOR PLAN





# Under Construction



## University of Kentucky HealthCare – Brachytherapy Capital Project

Cost: \$16.2 Million

- Create an updated procedural and treatment space with state-of-the-art equipment in Chandler Hospital
- Enhance patient care areas, create efficient staff space, and upgrade the HVAC and electrical systems





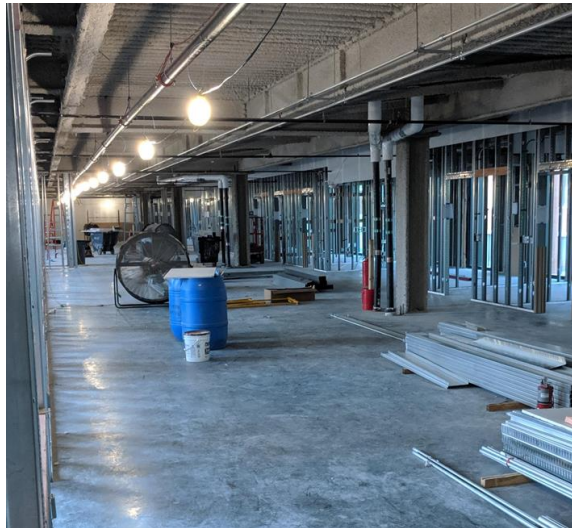
# Under Construction



## Healthy Kentucky Research Building - Phase II

Cost: \$40 Million

- Phase II of the Healthy Kentucky Research Building will build out the fourth and fifth floors as well as the balance of the Vivarium on the lower level
- Substantial completion: scheduled for July 2020





# Under Construction



## **Parking Structure #5 Expansion Capital Project**

Cost: \$30 Million

- Mixed use parking facility will add more than 900 parking spaces with roughly 23,000 Gross Square Feet of space for UK and retail use
- Included in that total will be space for UK Innovation and eSports programs
- Scheduled completion: summer of 2020





# Out for Bid



## **Good Samaritan Hospital Facilities - University of Kentucky HealthCare - Magnetic Resonance Imaging Capital Project**

Cost: \$5.5 Million

- Installation of up to two magnetic resonance imaging (MRI) machines
- Expansion of clinical services and relocation of support and administrative services within the Markey Center and Chandler Hospital Complex





# Out for Bid



## **Improve Building Mechanical Systems - Ag North HVAC Capital Project**

Cost: \$8 Million

- This phased project will replace existing air handling units in a systematic process to minimize disruptions to normal operations





# Modernization In Design



## Renew/Modernize Facilities - Cooper House

Cost: \$4 Million

- Constructed in approximately 1880
- When complete, the Cooper House will include a reception area, provide meeting rooms and offices, and feature space to showcase goods and products
- The project will replace or restore all building systems





# Modernization In Design



## **Reynolds Building #1 (Design Only) Capital Project**

Cost: \$34 Million (Total Project)

- Adaptive reuse for the College of Design
- Design will create large, open spaces for studios
- Programming phase under way





# Modernization In Design



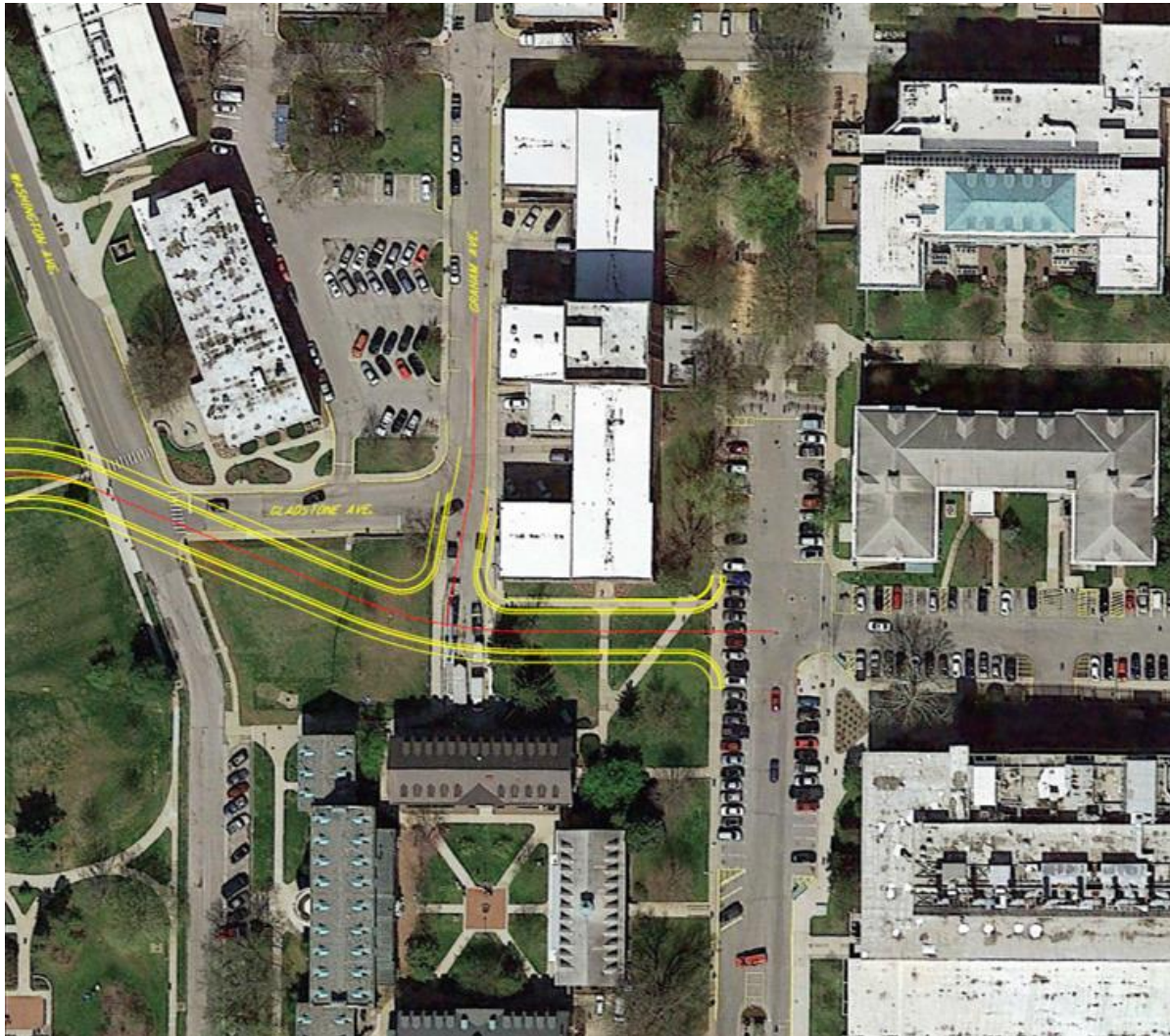
## **Scovell Hall (Design Only) Capital Project**

Cost: \$42 Million (Total Project)

- Adaptive reuse for the College of Public Health
- Complete modernization of the existing building that will provide classrooms, offices, student collaboration space, and other support spaces
- Programming phase under way



# In Design



## **Improve Civil/Site Infrastructure - Library Drive Extension Phase I Capital Project**

Cost: \$4 Million

- Extend Library Drive to Washington Avenue
- Alleviate traffic on Rose Street from Columbia Avenue to Funkhouser Drive
- Improve pedestrian safety in the area





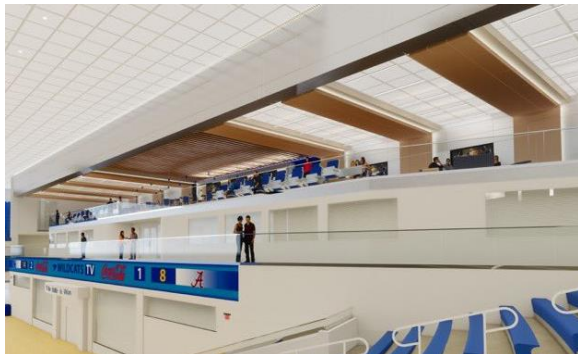
# In Design



## Improve Memorial Coliseum (Design Only) Capital Project

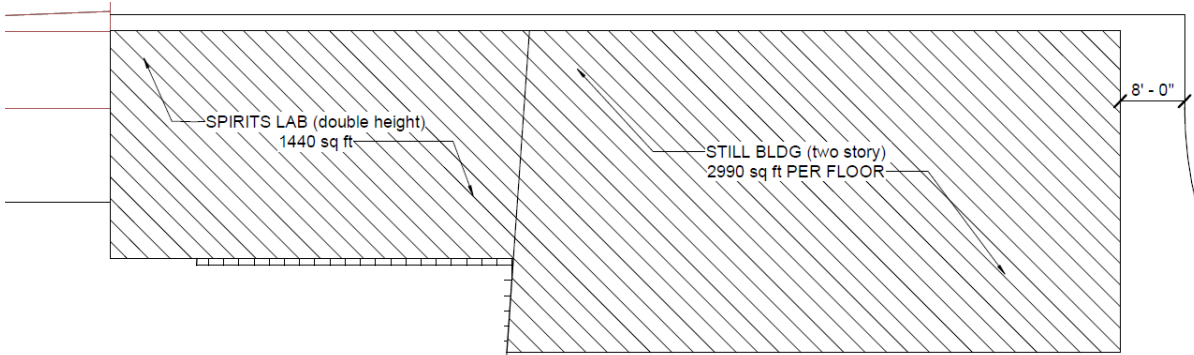
Cost: TBD

- Opened in 1950, Memorial Coliseum was built as a memorial to Kentuckians who died in World War I, World War II, and the Korean War
- The project will include enhanced amenities, climate control, modern seating, and improvement to safety, security, lighting, and sound





# In Design



## Still Building (Design Only) Capital Project

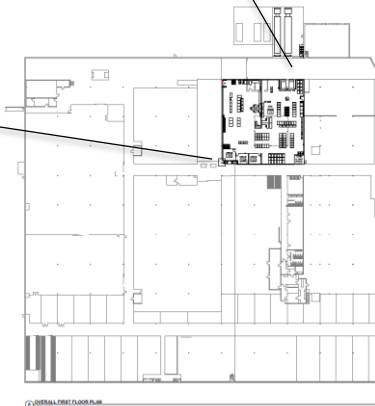
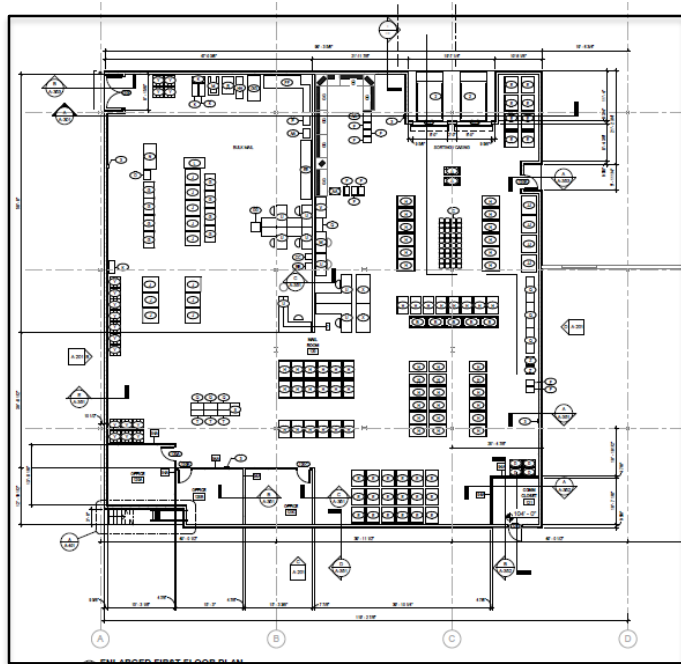
Cost: \$5.5 Million (Total Project)

- The Spirits Laboratory will be approximately 7,500 Gross Square Feet and will showcase the University of Kentucky College of Agriculture, Food and Environment's Department of Horticulture
- The project will include:
  - Teal Classroom for 25-30 people
  - Conference Room
  - Offices
  - Spirits Laboratory
  - Other support spaces





# In Design



## **Renovate Warehouse Space Phase Two (Post Office) Capital Project**

Cost: \$2 Million

Phase Two includes:

- General improvement to the facility
- Fit-up space for relocation of postal services



# **EVPFA Report**