

# EVPFA Report

Eric N. Monday

Executive Vice President for Finance  
and Administration

December 10, 2019

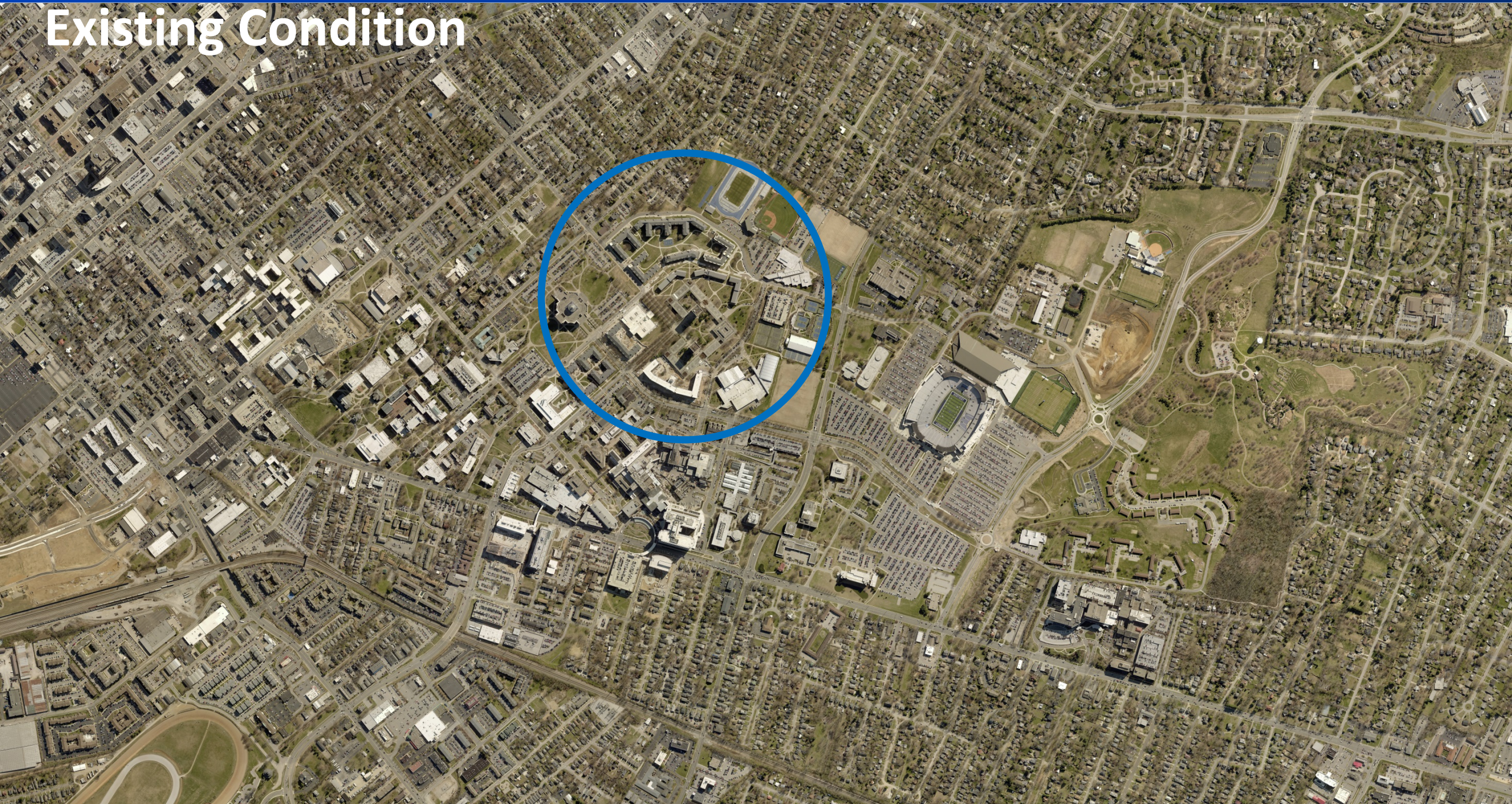


- Kirwan-Blanding Project
- Winslow Project



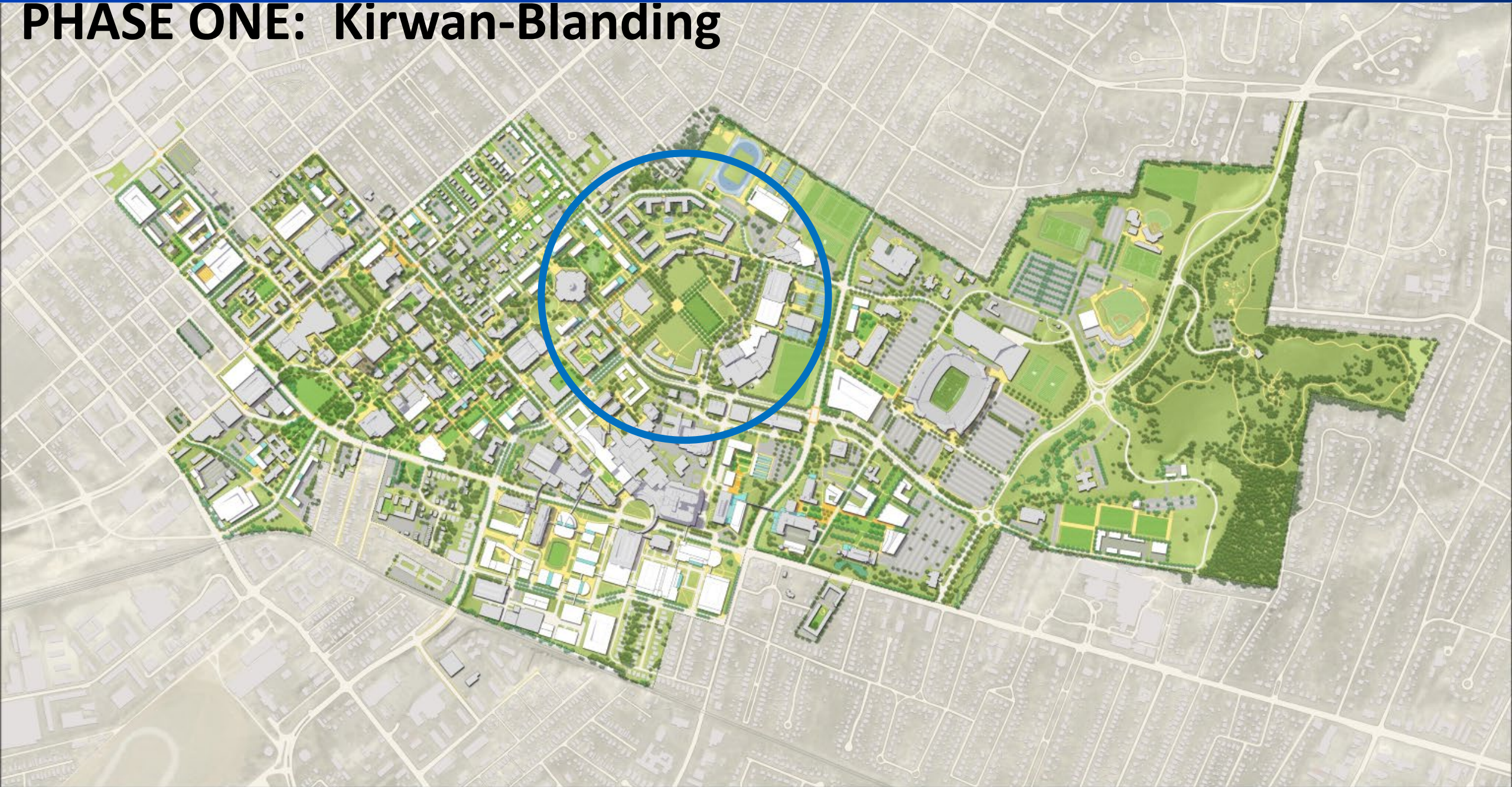


# Existing Condition





# PHASE ONE: Kirwan-Blanding





# PHASE TWO: THE GREEN





We Are What's *Wildly Possible.*



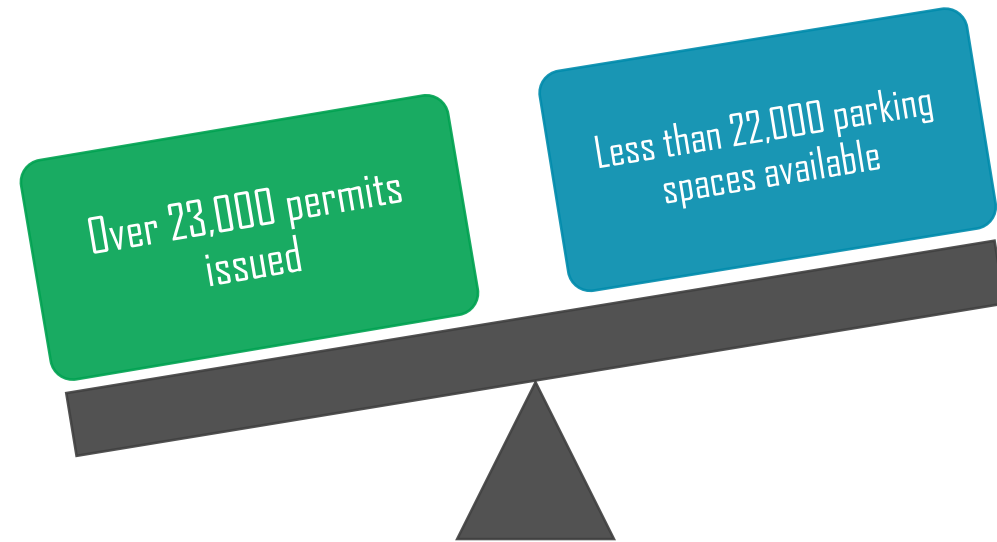


- Kirwan-Blanding Project
- **Winslow Project**
  - Ms. Melody Flowers, Executive Director for Strategic Analysis and Policy

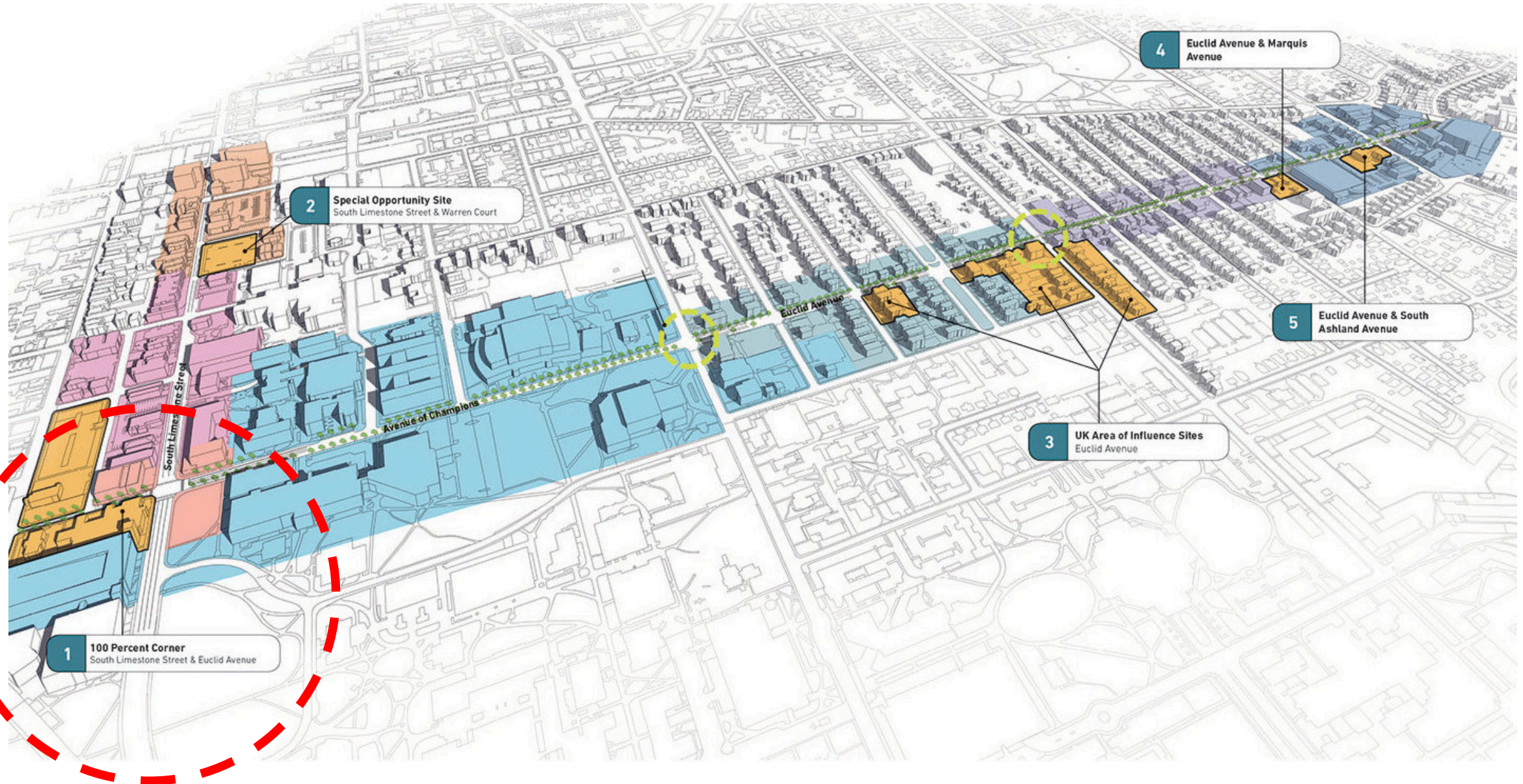




- UK's Transportation Services provides commuting alternatives and intra-campus mobility for employees, students, patients, and guests
- The new parking facility is a critical part of the University's Transportation Master Plan





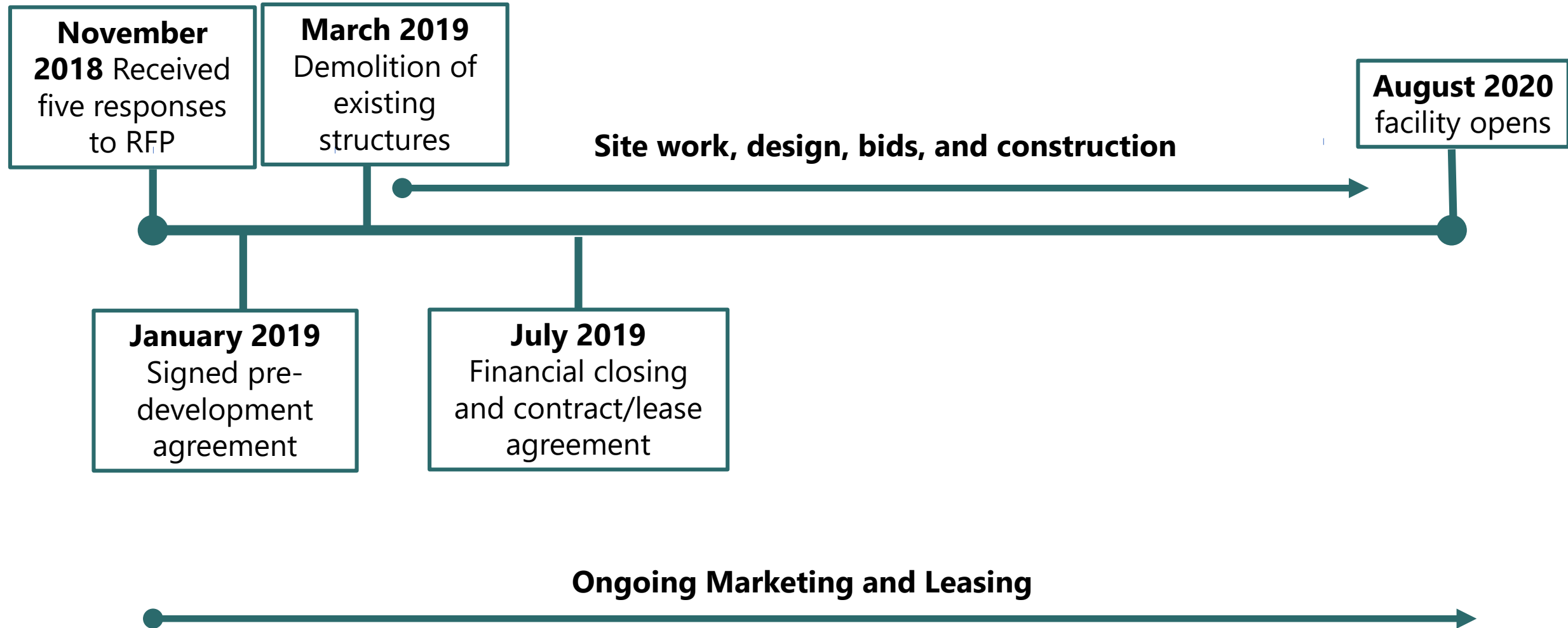




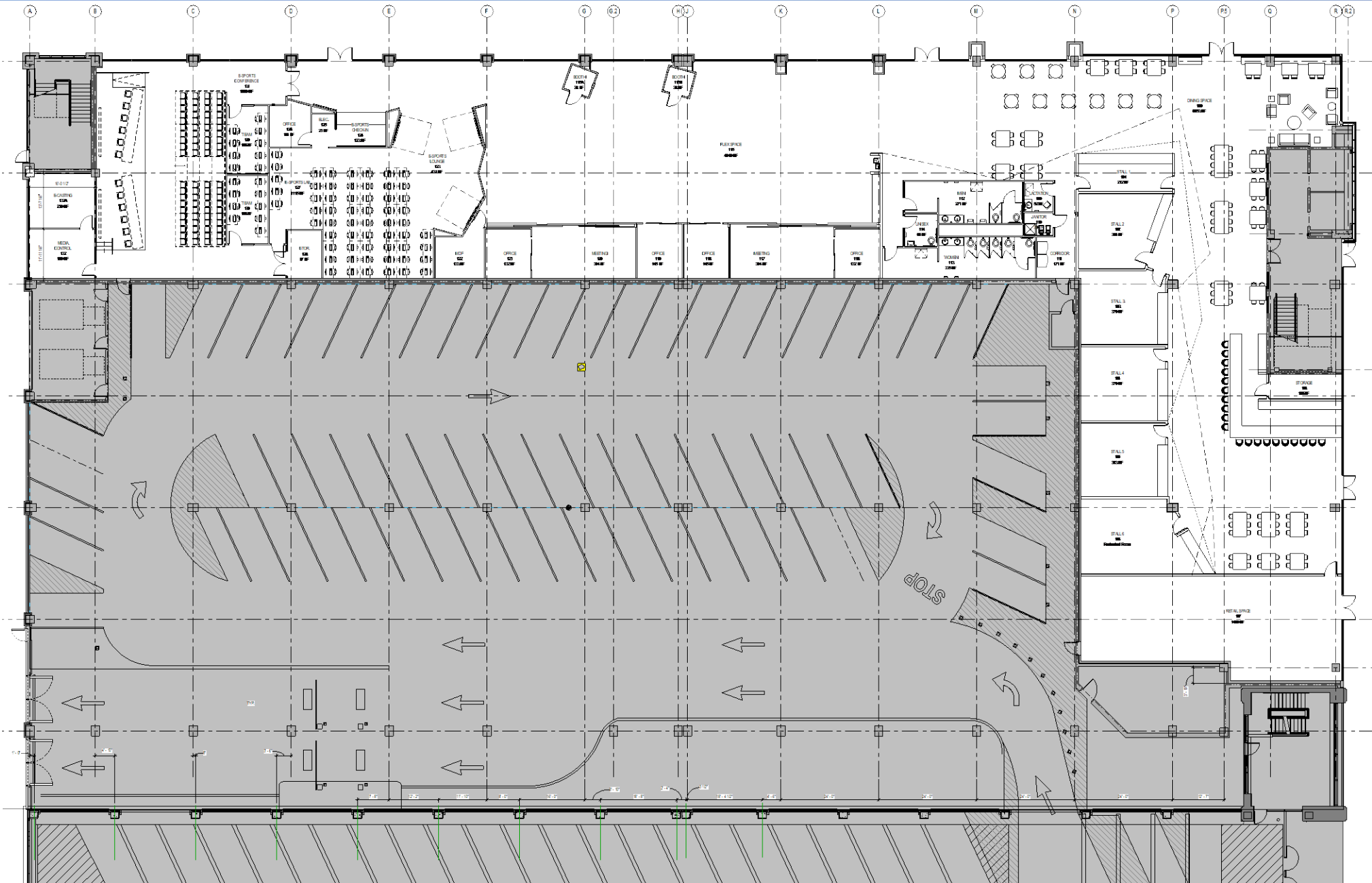
- Maximize parking available for faculty, staff, students, and guests
- Deliver the completed project by August 2020
- Take advantage of ground floor space to activate the Limestone/Winslow corner



























HK



- Design development level programming of retail and innovation spaces
- Recruit retail tenants
- Select public art
- Collaborate on programming







Students,  
Faculty, and  
Staff

- Program Advisory Group
- Deans/Provost Council
- eSports Club
- Student Government Association, Research Advisory Group, Staff Senate

City and  
Community

- Lexington Fayette Urban County Government Council and Mayor's Office
- Traffic Engineering
- Utility Companies
- Business Partners
- Civic Organizations

Retail

- Joint Programming
- Springboard for Deeper Relationships



# QUESTIONS AND DISCUSSION





# EVPFA Report

