

UNIVERSITY OF KENTUCKY BOARD OF TRUSTEES



**ADVANCING
KENTUCKY WITH**

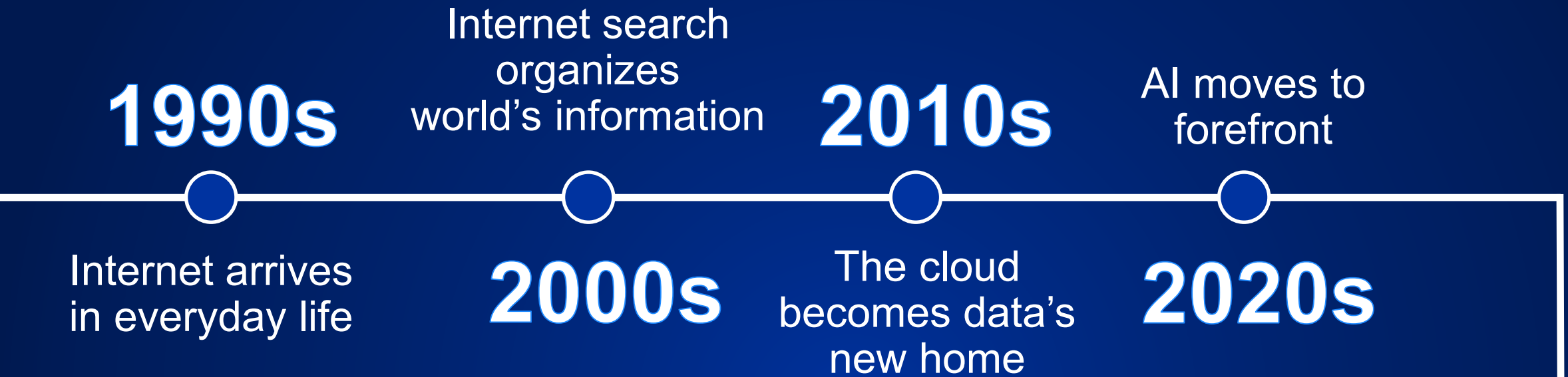


Microsoft

A man with a beard and safety glasses, wearing a blue t-shirt, is working on a complex industrial machine. The machine has various components, including a large black cylindrical part with a brass-colored tip. A red laser line is visible in the background. The scene is dimly lit, with the machine's lights providing the primary illumination. The text 'CATS AI' is overlaid in large, white, sans-serif font across the top and middle of the image.

CATS AI

The Commonwealth AI Transdisciplinary Strategy

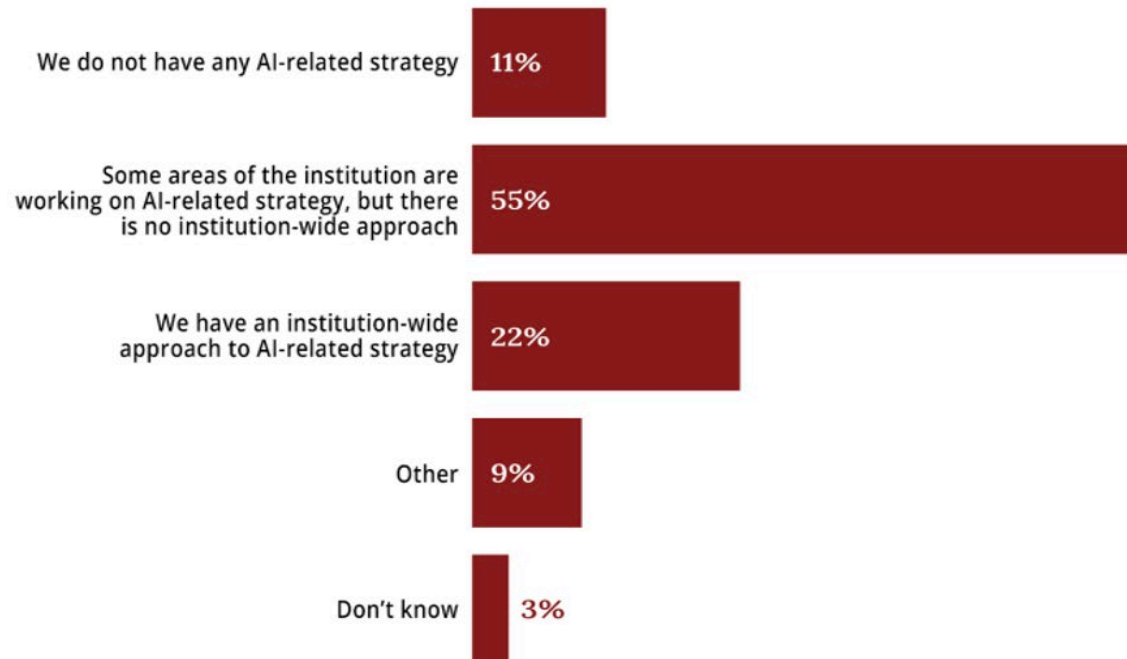
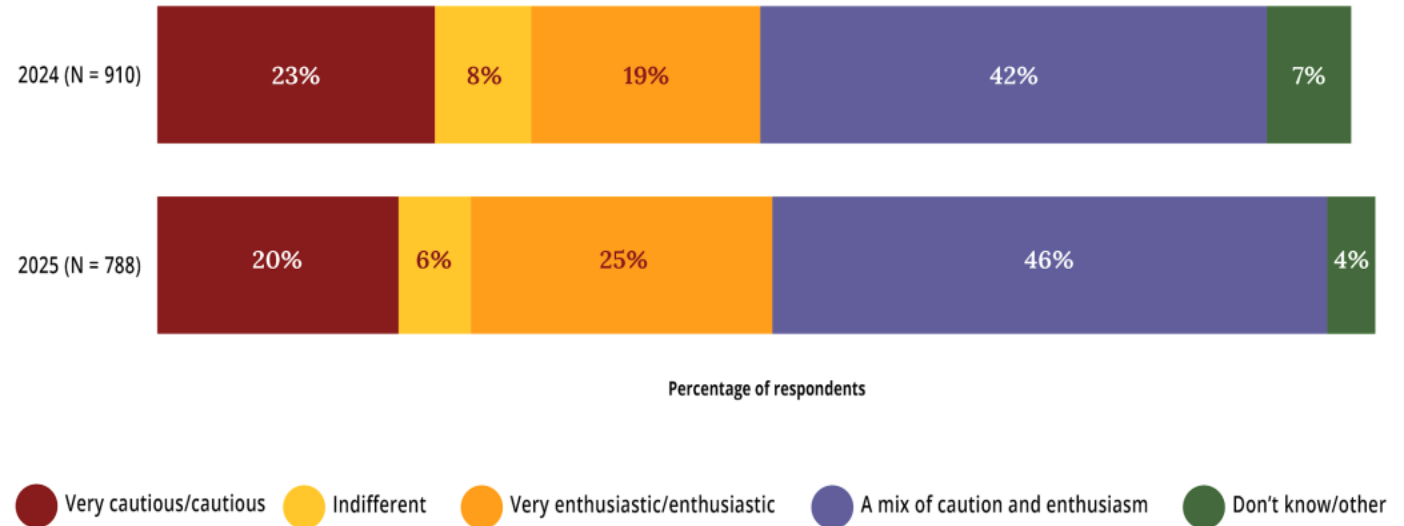


CHAT GPT

- One million users in five days
- ~193 million site visits per day (2025)
- ~5.8 billion monthly visits
- 39% adoption rate in two years

2022

Impressions of Institutional Leaders' General Attitudes Toward AI



Institutions' Approaches to AI-related Strategy

GUIDING QUESTIONS

- What will students experience as AI transforms learning and discovery?
- How will AI reshape the way our staff work and our providers deliver care?
- How can AI accelerate research and innovation to advance the Commonwealth?
- How is the university preparing our people — students, faculty and staff — for this transformation?



CATS AI

Vision: A future for Kentucky where artificial intelligence expands human potential, accelerates economic progress and improves the health and lives of the people we serve.

Mission: To become the partner institution of choice in advancing AI through a comprehensive framework that ensures responsible adoption, expands access to tools and skills and unites innovation across the university and the Commonwealth.



**Governance and
Responsible AI**



Secure Access

CORE PRINCIPLES



Skills and Culture



**Adoption and
Partner Insights**

Shared Ownership. Shared Benefits. Shared Community.

STUDENTS

- Graduate fluent in AI — literacy, competency and expertise
- Practice safely in a personal sandbox tied to coursework and career goals
- Meet employer demand

FACULTY AND RESEARCH

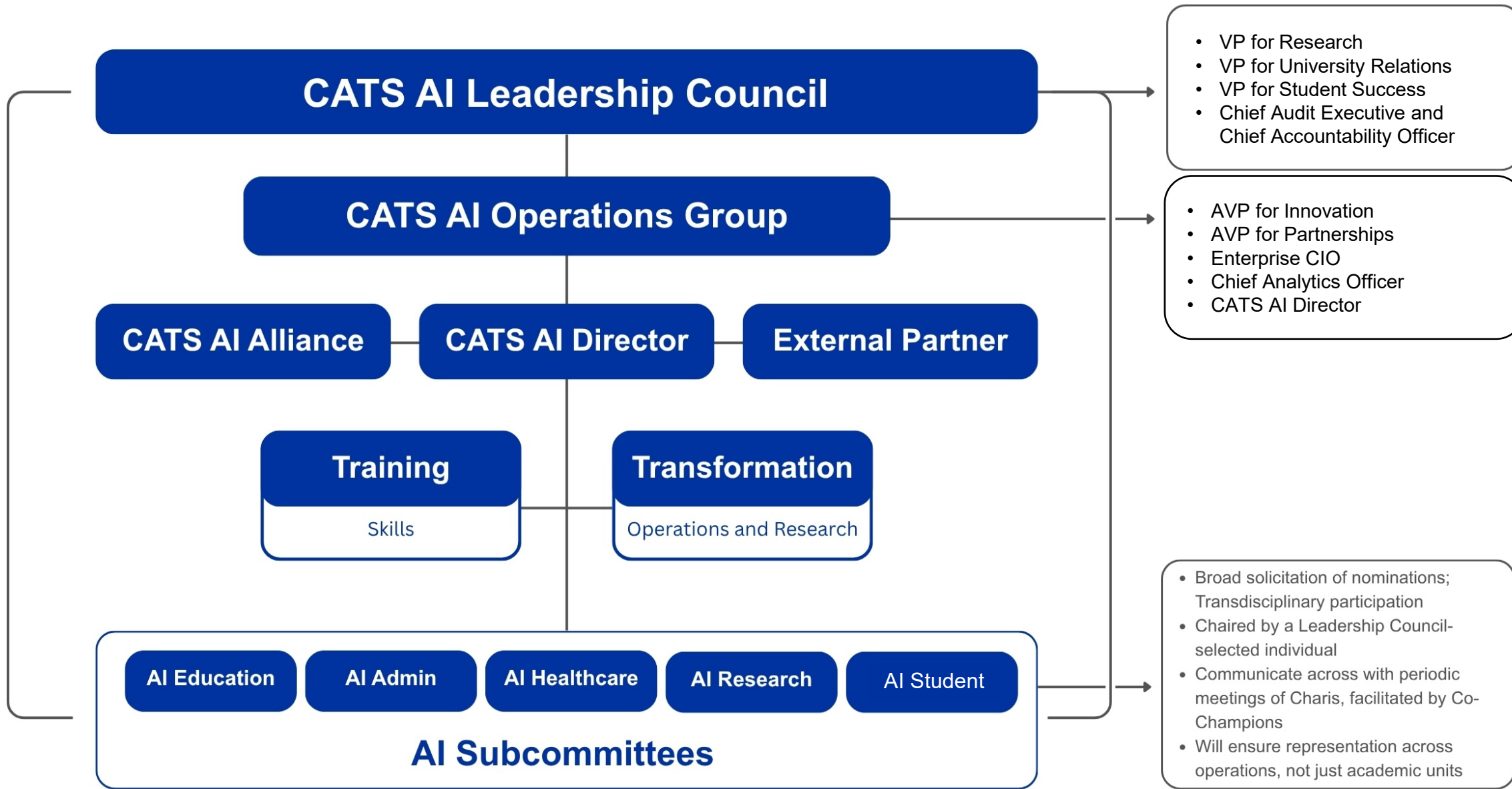
- Access leading models to accelerate basic and applied research
- Competitive edge in recruiting and retention
- Teach current methods in class, lab and field

KENTUCKY'S ECONOMY

- AI is estimated to add \$13-15T to global GDP by 2030 — Kentucky can win its share
- Build talent and innovation pipelines with industry and health partners

UNIVERSITY COMMUNITY

- A visible, governed transformation engaging students, faculty, staff, alumni and partners
- Confidence we remain current, relevant and responsible





Microsoft is leading the future of AI.

UK is shaping how that future
advances Kentucky.

Expertise and Experience

- Formal AI division created over a decade ago.
- More than 5,000 AI scientists and engineers dedicated to applied research.
- AI for Good initiative to ensure responsible AI proliferation.

Strong Partnership Legacy

- Longstanding partnership with a foundation of trust.
- Microsoft – OpenAI collaboration dates back to 2019.
- Builds on shared commitment to innovation, access and advancement for Kentucky.



ADVANCING
KENTUCKY
TOGETHER

QUESTIONS

