

FCR 15

Office of the President
February 19, 2016

Members, Board of Trustees:

APPROVAL OF THE 2014-15 ENDOWMENT MATCH PROGRAM ANNUAL REPORT

Recommendation: that the Board of Trustees accept the 2014-15 Endowment Match Program Annual Report. The report is provided as a separate document.

Background: The Research Challenge Trust Fund (RCTF) was established in 1997 with the passage of House Bill 1, the *Kentucky Postsecondary Education Improvement Act*. The RCTF is designed to encourage research activities at the University of Kentucky and the University of Louisville. The Endowment Match Program, also known as 'Bucks for Brains', is one of several programs created as part of the trust fund. Pursuant to the Council on Postsecondary Education's Endowment Match Program Request and Reporting Procedures, the Board of Trustees must review and approve the annual report on UK's participation in the program. The annual report and additional information about the program is available online at:

<http://www.research.uky.edu/faculty/rctf/index.html>

Action taken: Approved Disapproved Other _____

University of Kentucky Endowment Match Program

Annual Report
2014-15



UNIVERSITY OF
KENTUCKY[®]



Kentucky's flagship and land grant research university shines a bright path to prosperity for the Commonwealth it serves. The University of Kentucky provides a transformational academic experience that prepares students to lead lives of meaning and purpose. We conduct cutting-edge research that addresses the Commonwealth's relevant questions and impacts our economy. And we render sophisticated care and meaningful service that changes lives and transforms communities.

Over the last 14 years, the "Bucks for Brains" partnership between UK's Research Challenge Trust Fund and the Commonwealth of Kentucky has been a key component in supporting the innovations made by our faculty, staff and students. Since its inception, Kentucky has pledged more than \$230 million in state funds to UK, which we matched – dollar for dollar – with private funds to support the research enterprise of our institution. We've used these funds:

- As part of the effort to build the University's endowment from \$420.8 million in Fiscal Year 2001 to more than \$1 billion in Fiscal Year 2015.
- To create more than 300 endowed chairs and professorships across all colleges and professional schools; more than 260 fellowships, scholarships and endowments for research support and for the William T. Young Library.
- As a key element of increasing our external grants and contracts from \$173.6 million in Fiscal Year 2001 to more than \$285 million in Fiscal Year 2015.
- And, to open state-of-the-art research space in the College of Pharmacy and Davis Marksbury Building through increased flexibility with "Bucks for Bricks" revenue.

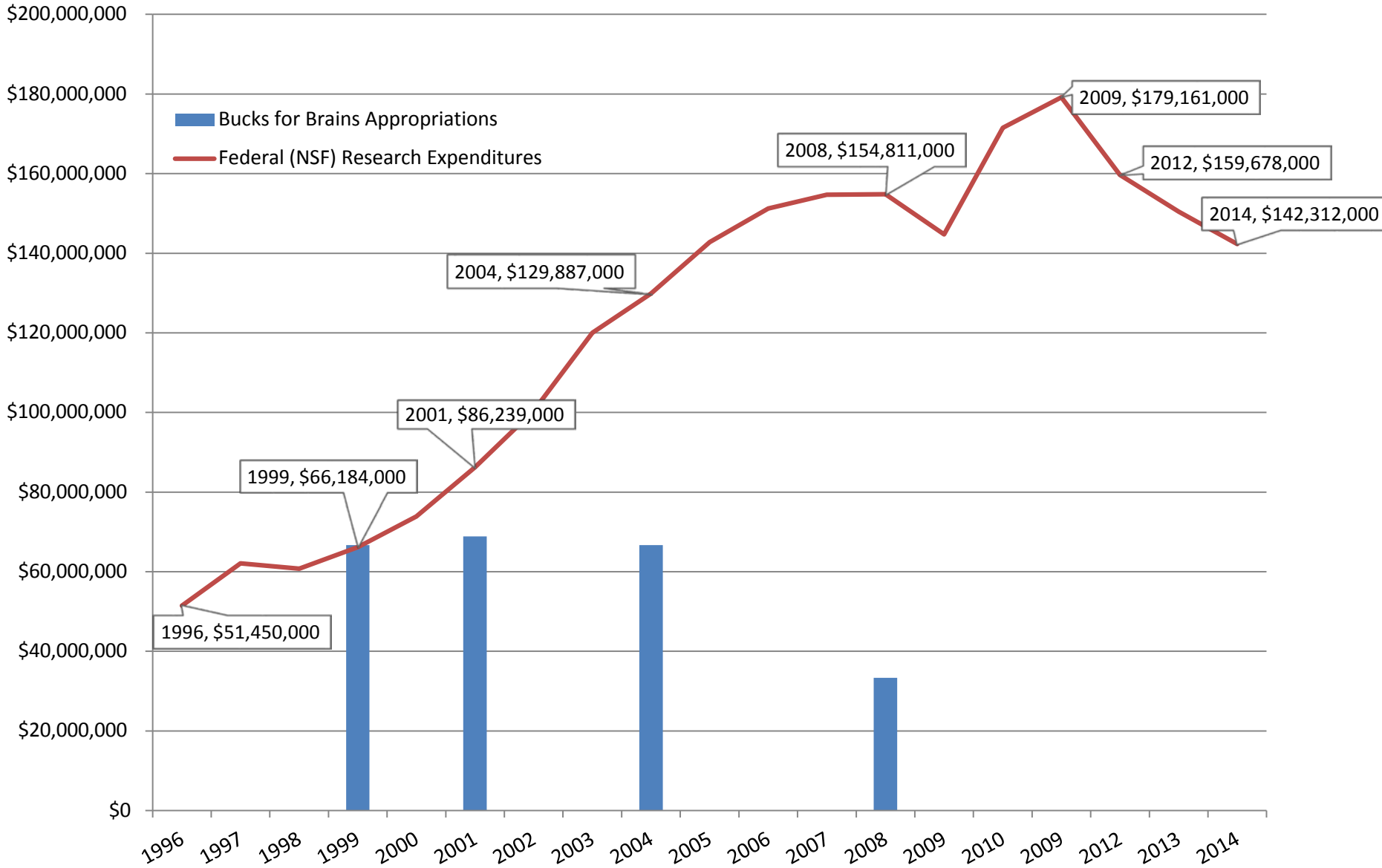
The benefits of this partnership – spanning more than a decade – are fulfilling our commitment to Kentucky. With your help, we have catapulted our institution to new heights. Because of you, the Markey Cancer Center was named one of the 68 NCI-designated centers in the US. This distinction placed UK among 22 universities with a triple crown of federal research awards: NCI-designation, a Clinical and Translational Sciences Award and an Alzheimer's Disease Center.

As we build on a successful teaching, research, service and health care enterprise, more people have placed their faith in the talent on our campus. Last year, the Kentucky General Assembly agreed to partner with the University to build a \$265 million research facility to expand and enhance our work in addressing the Commonwealth's health disparities.

We are intently focused on multi-disciplinary, team-based research to confront the issues that are most pressing for the people of the Commonwealth of Kentucky. Our goal is to leverage past success toward creating a promising future. This model – your partnership – will help us continue our ascent and, as a result, improve the lives of citizens across the state.


President, University of Kentucky

University of Kentucky Bucks for Brains Appropriations and Federal Research Expenditures for Science and Engineering



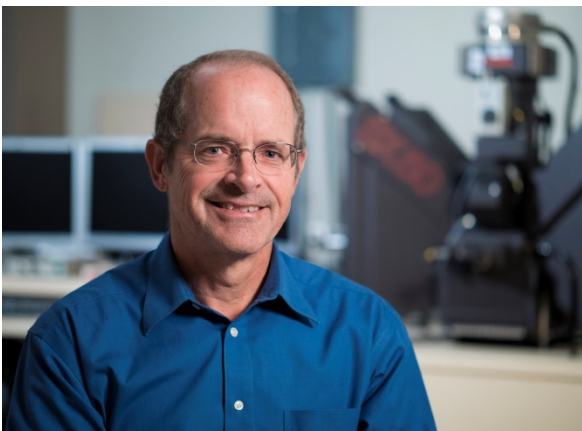
FOCUS ON FACULTY



Ellen J. Hahn

Marcia A. Dake Professor of Nursing

Ellen J. Hahn is a tobacco control researcher with expertise in environmental health and risk reduction. She earned her Ph.D. in health policy from the Indiana University School of Nursing. Hahn is a professor in the UK colleges of Nursing and Public Health and she directs the BREATHE research team and Kentucky Center for Smoke-Free Policy. In 2000, she was invited to a meeting of “movers and shakers” to discuss tobacco use in Lexington. Hahn explains, “I had nothing to lose so I just said, ‘How about if we work together to try to make Lexington smoke free’ and, frankly, I thought they’d laugh me out of the room, but that’s not what happened.” Hahn worked with the health department to develop a plan, and Lexington went smoke free in 2004. “We saw a dramatic decline in adult smoking in Lexington compared to 30 other counties that looked like us, but who didn’t have smoke free laws. We saw a 32% decline in adult smoking, and that translated into 16,500 fewer smokers, and it meant that we were saving about \$21 million dollars a year in healthcare costs, just in Lexington-Fayette County alone.” Currently, Hahn has multiple research studies under way. Three of these projects focus on radon, including “FRESH: Dual Home Screening for Lung Cancer Prevention,” a \$2.1 million grant funded by National Institute of Environmental Health Science for which she is the principal investigator. She was also a co-investigator on a recently completed \$1.4 million grant from the Army to study the impact of environmental carcinogens on lung cancer in Appalachian Kentucky. In fiscal year 2015 alone, Hahn had 21 peer-reviewed research papers published or in press. She says, “UK has been a great place to give me the community laboratory to do the work that I do, so that we can make a difference in the lives of the people who live in Kentucky.”



Dave Moecher

Earth and Environmental Sciences Alumni Professor

Dave Moecher is chair of the Department of Earth and Environmental Sciences in the UK College of Arts & Sciences. “I work on the history and evolution of the earth’s crust: where it came from, how it formed,” says Moecher, who studies the Appalachian mountain chain which extends across the Atlantic Ocean to Norway. “The irony is that my students and I work on mountain belts—we work on the scale of continents—but then we analyze tiny mineral grains that might be a hundred microns across. But each of those mineral grains has in it the history of that mountain belt.” Moecher has two active National Science Foundation grants totaling \$410,000, and he is studying how unusually hot granites were formed 1 billion years ago. “First of all, we have to prove that there were very hot crustal conditions, but then we have to come up with a very large-scale model for why a certain part of the crust was exceptionally hot in earth’s history. From an earth history context, it’s interesting and compelling. But from a more practical aspect, these types of granites are granites in which ore deposits occur. We use ore deposits for all of the materials in our society.” Moecher earned his Ph.D. in geology at the University of Michigan, then spent one year as a National Research Council Fellow at the U.S. Geological Survey. He was a research associate at the State University of New York at Stony Brook, before coming to UK in 1991. He has authored 50 peer-reviewed papers and four field guides. “I feel I need to acknowledge the alumni who helped create this professorship back in the 1990s: Steve Sullivan, Will Foley, Jim Pear, and Ken Neavel. We thank them, and our many other alumni who support undergrad and graduate students in Earth and Environmental Sciences.”



Catherine A. Martin

Dr. Laurie L. Humphries Chair in Child Psychiatry

Catherine A. Martin is a child and adolescent psychiatrist. She received her medical degree from the University of Kentucky, College of Medicine and completed a residency and child fellowship at the University of Kentucky. She became a faculty member in 1980. Martin has published 78 peer-reviewed articles and 17 book chapters. She is currently working on five research grants, including National Institute on Drug Abuse (NIDA) projects to investigate individual differences related to drug effects in children, adolescents and adults. She is also involved in two K12 programs, which support research career development for young scientists in adolescent drug abuse and women's health. Martin says, "I've been very fortunate in having generous, thoughtful, intelligent, and gifted colleagues to

exchange ideas with, problem solve." Based on what she has seen in her adolescent clients, Martin says e-cigarettes are concerning for several reasons. "One is if you ask a teenager, 'Do you smoke?' They say, 'No.' But then later you find out they're using e-cigarettes. In addition, teenagers do not consider e-cigarettes unhealthy. If a teenager thinks a drug is safe, they are more likely to use it. Also, e-cigarettes may be the first way an adolescent is exposed to nicotine, and we know that early and even intermittent exposure to nicotine in adolescence is a harbinger of life-long dependence." Martin is developing better screening techniques for e-cigarettes and other routes of tobacco use. "I think it is hard to imagine how you can see an adolescent who is using drugs and it's completely derailing them—either their performance in school or with their family or with their friends, their safety as far as drinking and driving, or having unprotected sex, exposing themselves to very traumatic events—and not be motivated to want to help that teenager in a unique and different way."



Stephen P. Borgatti

Chellgren Chair in Corporate Strategy

Stephen P. Borgatti is a professor in the Gatton College of Business and Economics and his expertise is in social network analysis—the study of how people are connected to each other. "Networks, particularly in organizations, are how things get done," says Borgatti, who has been at UK since 2007. He studies centrality, in particular the idea that some positions within a network are more advantageous than others. "One way in which you could be central is that you're not far from everybody else in the network. People like that tend to hear things faster. So if information is flowing through the network, they hear it early when they can take advantage of it. At the same time, it depends on the context. If it's a contagious disease, then the person that's very central is going to get it early and maybe before

there's any kind of treatment available." Borgatti earned his Ph.D. in mathematical social science at the University of California, Irvine and has authored more than 130 articles. His work has been cited 30,000 times by other scholars. Borgatti has been a senior editor at *Organization Science*, and is currently associate editor at the *Journal of Supply Chain Management*, as well as *Computational and Mathematical Organizational Theory*. At UK, he is a member of the LINKS Center for Social Network Analysis. The center conducts annual workshops on social network analysis. "We have trained now over a thousand people, which I think has a significant impact because most of them are management people. And we do that with a staff of 28 instructors and assistants, and the only way to field that many people is to have all of our graduate students and all of our faculty focused on the same thing. UK is an ideal place to do what I'm doing."

FOCUS ON STUDENTS

The Endowment Match Program is not only a mechanism to recruit faculty, it also provides research opportunities and financial support for some of the most talented graduate students in the U.S. In Fiscal Year 2015, the Endowment Match Program provided graduate fellowships to 419 recipients.

FOCUS ON KENTUCKY

Bucks for Brains is a primary catalyst for the substantial growth in external research funding to the campus and to Kentucky. Since the Kentucky General Assembly passed the Postsecondary Education Improvement Act of 1997 (House Bill 1), external research grants and contracts at the University have increased from \$122 million to \$285 million (a 134 percent increase). (www.research.uky.edu/numbers/stats.html).

These dollars have an impact on UK's campus. During Fiscal Year 2015, external research grants and contracts resulted in a \$376.4 million contribution to the Kentucky economy, including \$213.3 million in personal income. Each dollar of out-of-state external funding for research generates approximately \$1.86 of total related expenditures.

ENDOWMENT ACTIVITY

Since its creation, the University of Kentucky has received \$233,334,000 in state funds through the Research Challenge Trust Fund for the Endowment Match Program and the Research Capital Match Program which was created by the 2008 Kentucky General Assembly to support research capital projects. Pursuant to its statutory authority, the University of Kentucky, Board of Trustees allocated \$21,926,570 to the Research Capital Match Program and the remaining funds have been dedicated to the Endowment Match Program. Per the Program Guidelines for both the Endowment Match Program and the Research Capital Match Program all state funds have been fully matched by the University on a dollar-for-dollar basis.

Since 1998, the University of Kentucky has used the Endowment Match Program to:

- create 94 endowed chairs and 214 endowed professorships; and
- create 262 fellowships, enrichments and mission support projects to support research and the William T. Young Library (Table 1).

TABLE 1: ENDOWMENT MATCH PROGRAM POSITIONS, PROGRAMS AND PROJECTS ESTABLISHED DURING FISCAL YEAR 2014-2015 AND SINCE PROGRAM INCEPTION

Activity	2014-2015		1998-2015	
	Number of Positions or Projects	Occupied Projects with Expenditures	Number of Positions or Projects	Occupied Projects with Expenditures
Chair	0	0	94	82
Professorships	0	0	214	164
Fellowships	0	0	127	93
Mission Support	0	0	135	101
TOTAL	0	0	570	440

ENDOWMENT MATCH PROGRAM AT A GLANCE

Endowment Match Program faculty have made substantial contributions to the University of Kentucky research portfolio. As of June 30, 2015, UK has 298 active patents, primarily in drug development and drug design; plant biotech; equine health; medical implants; drug delivery systems; and medical devices. Thirty-one new patents were issued and 9 patent applications were filed in Fiscal Year 2015. UK received \$1,047,630 in licensing revenue, held a total of 125 licenses, and issued 3 new licenses to start-up companies. According to the 2014 report from AUTM, the Association of University Technology Managers, UK ranks 31st in startup companies among public universities. In addition, UK ranks 60th in licensing income overall, and 38th among public universities in total licensing income.

DEMOGRAPHIC INFORMATION

As of June 30, 2015, the University of Kentucky has appointed a total of 207 faculty endowed chairs and professorships under the auspices of the Endowment Match Program. Of those appointments, 167 (80.7 percent) are male, and 40 (19.3 percent) are female. Of the 785 research staff associated with the Bucks for Brains program, 352 (44.8 percent) are male and 433 (55.2 percent) are female (Table 2).

TABLE 2: GENDER OF ENDOWMENT MATCH PROGRAM FACULTY AND STAFF AS OF JUNE 30, 2015

	Male	Female	TOTAL
Chairs	56	15	71
Professorships	111	25	136
Staff	352	433	785
TOTAL	519	473	992

TABLE 3: RACE OF ENDOWMENT MATCH PROGRAM FACULTY AND STAFF AS OF JUNE 30, 2015

	White	Black	American Indian	Asian	Hispanic	TOTAL
Chairs	59	1	0	9	2	71
Professorships	119	3	0	13	1	136
Staff	525	42	2	188	28	785
TOTAL	703	46	2	210	31	992

During Fiscal Year 2015 there were 127 endowments supporting graduate fellowships. Since a single endowment may support multiple student awards, 419 graduate students received support from endowment proceeds (Table 4). There were 153 (36.5 percent) minority students among fellowship recipients.

TABLE 4: GENDER AND RACE OF ENDOWMENT MATCH PROGRAM FINANCIAL AID RECIPIENTS FOR AWARDS MADE DURING FISCAL YEAR 2015

Fellowship Recipients	White	Black	Other	Asian	Hispanic	TOTAL
Male	138	7	14	56	4	219
Female	128	6	9	49	8	200
TOTAL	266	13	23	105	12	419

AREAS OF CONCENTRATION

The Council on Postsecondary Education’s 2002-04 and 2008-10 Endowment Match Program Guidelines stipulate that at least 70 percent of program funds at the research institutions must be used to support Research Challenge programs or academic disciplines contained within Kentucky’s five new economy clusters: (1) human health and development; (2) biosciences; (3) materials science and advanced manufacturing; (4) information technologies and communications; and (5) environmental and energy technologies. As shown below, the University of Kentucky directed 79.2 percent of the funds to support positions, programs, or projects within the new economy clusters (Table 5).

TABLE 5: 2002-2004 AND 2008-10 ENDOWMENT MATCH PROGRAM FUNDS DEDICATED TO COUNCIL PRIORITY AREAS

	State Funds	Private Funds	Total	Percent of Total
Human Health & Development	\$43,177,451	\$43,177,451	86,354,902	55.3%
Biosciences	11,465,768	11,465,768	22,931,536	14.7%
Materials Science & Advanced Manufacturing	4,881,904	4,881,904	9,763,808	6.3%
Information Technologies & Communications	997,771	997,771	1,995,542	1.3%
Environmental & Energy Technologies	1,266,900	1,266,900	2,533,800	1.6%
Other	16,283,636	16,283,636	32,567,272	20.8%
TOTAL	\$78,073,430	\$78,073,430	\$156,146,860	100.0%

Pursuant to the 2002-04 and 2008-10 Endowment Match Program Guidelines, the University also directed at least 70 percent of program funds to support chairs, professorships or research scholars, and infrastructure or fellowships directly linked to the research activities of endowed chairs and professors.

FINANCIAL SUMMARY

The University has received all currently available state matching funds for the Endowment Match Program. The market value and accumulated fund balances as of June, 30, 2015, of all endowments created or expanded as part of the Endowment Match Program total \$519,904,219.

University of Kentucky
 Endowment Match Program
 Table 6: Endowments Established or Expanded with State Funds
 For All Matched FY 2002-04 and FY 2008-10 Appropriated Funds
 Reporting Period: Fiscal Year 2014 - 2015

Endowment Name	Date Estab.	Prior to 07/01/14			During Fiscal Year 2014 - 2015				Outstanding Pledges as of 06/30/15	
		State Funds Received	Gifts Received	Market Value as of 07/01/14	State Funds Received	Gifts Received and Transfers	Investment Earnings (Loss)	Earnings Distributed ¹		Market Value as of 06/30/15
New RCTF Funded Endowments										
		\$0	\$0	\$0	\$0	\$0	\$0	\$0	\$0	\$0
New RCTF Funded Endowments Sub-Total		\$0	\$0	\$0	\$0	\$0	\$0	\$0	\$0	\$0
Endowments Expanded										
		\$0	\$0	\$0	\$0	\$0	\$0	\$0	\$0	\$0
Endowments Expanded Sub-Total		\$0	\$0	\$0	\$0	\$0	\$0	\$0	\$0	\$0
Grand Total		\$0	\$0	\$0	\$0	\$0	\$0	\$0	\$0	\$0

University of Kentucky
Endowment Match Program
Table 7: Components of Change in Endowment Market Value
During Fiscal Year 2014 - 2015

Endowment Name	Date Estab.	Prior to 07/01/14			During Fiscal Year 2014 - 2015				Outstanding Pledges as of 06/30/15	
		State Funds Received	Gifts Received	Market Value as of 07/01/14	State Funds Received	Gifts Received and Transfers	Investment Earnings (Loss)	Earnings Distributed ¹		Market Value as of 06/30/15
New RCTF Funded Endowment										
		\$0	\$0	\$0	\$0	\$0	\$0	\$0	\$0	\$0
New RCTF Funded Endowment Sub-Total		\$0	\$0	\$0	\$0	\$0	\$0	\$0	\$0	\$0
Existing RCTF Funded Endowments										
Abercrombie Foundation Research - Art	01/17/01	\$400,000	\$400,000	\$882,019	\$0	\$0	\$15,359	(\$18,140)	\$879,238	\$0
Abercrombie Foundation Research Fund - Music	01/17/01	400,000	400,000	847,724	0	0	14,762	(17,435)	845,050	0
AIA Kentucky Endowed Professorship	11/28/00	100,000	100,025	229,392	0	0	3,960	(7,227)	226,126	0
Alan F. Bloomfield Professorship in Business	02/10/97	150,000	150,405	328,916	0	0	5,679	(10,363)	324,231	0
Albert and Lorraine Clay Visiting Scholars Endowment	04/06/99	750,000	750,000	1,705,344	0	0	29,451	(53,746)	1,681,049	0
Albert G. Clay Endowed Chair in Equine Reproduction ²	12/09/98	3,250,000	24,225	4,516,061	0	0	79,892	0	4,595,953	0
Alberto Mazzoleni MD Professorship/Chair in Cardiology	12/10/08	149,001	172,950	393,850	0	3,000	6,853	(12,456)	391,248	0
Albisetti Dissertation Research Fellowship	06/24/03	50,000	77,538	146,176	0	2,000	(2,250)	0	145,926	0
Alfred M. Cohen M.D. Chair in Oncology Research	03/21/03	500,000	500,000	1,169,347	0	0	13,020	0	1,182,366	0
Alice P. Killpatrick Endowed Fellowship	04/09/09	200,211	256,599	615,382	0	0	10,624	(19,388)	606,619	0
Alvin L. Morris Professorship in Oral Health Research ³	01/20/98	200,000	200	213,469	0	0	3,685	(6,726)	210,428	0
Amerman Family Equine Research Endowment Fund	12/31/03	500,000	500,000	1,134,809	0	0	22,434	(35,784)	1,121,459	0
Ammon Nursery/Landscape Research Endowment	09/28/99	25,000	25,232	56,075	0	0	968	(1,767)	55,276	0
Ann Scott & Ralph E. Mason Endowed Research Fund in Opera Studies	11/10/01	100,000	100,000	250,910	0	0	(1,441)	(5,129)	244,340	0
Ann Scott Maher Mason Endowed Research Fund in Choral Studies	10/29/04	100,000	100,000	242,051	0	0	4,824	(4,983)	241,892	0
Anne Scott Maher Mason Vocal Music Scholarship Fund	12/04/95	50,000	50,000	117,119	0	0	2,039	(2,409)	116,750	0
Anthony V. Carozza Fellowship	08/31/05	50,000	50,000	146,077	0	0	2,591	(1,940)	146,728	0
Antonides-Williams Visiting Professorship	03/03/07	58,812	59,419	123,964	0	0	2,140	(3,906)	122,199	0
Antonio S. Turco Professorship in Biochemistry	10/18/00	218,000	218,000	491,127	0	0	9,710	(15,488)	485,349	0
Appalachian Fellowship Endowment Fund	12/08/98	1,000,000	1,032,018	2,127,599	0	230	36,737	(67,035)	2,097,531	0
Armor & Letitia Taylor Fund for Library Research Equipment	08/23/99	218,800	218,800	516,300	0	0	9,136	0	525,437	0
Arthur Andersen Endowed Professorship	11/20/00	100,000	336,327	462,011	0	0	7,976	(14,556)	455,431	0
Arthur E. Walker, Jr. Graduate Fellowship in Civil Engineering	12/31/01	300,000	300,000	683,207	0	0	11,795	(21,525)	673,477	0
Arthur Lieber, M.D. Professorship in Diagnostic Radiology	10/10/03	310,000	310,000	973,404	0	0	11,616	(30,654)	954,366	0
Arts & Sciences Endowed Professorship	05/20/08	495,217	495,417	1,364,720	0	0	23,899	(10,844)	1,377,775	0
Arts and Sciences DiSilvestro Professorship	06/01/04	50,000	50,000	116,548	0	0	2,062	0	118,609	0
Arturo Alonzo Sandoval Endowed Professorship	07/25/06	100,000	103,356	224,221	0	1,035	3,923	(4,622)	224,557	0
Arvie & Ellen Turner Thacker Endowment Fund	09/02/02	50,000	50,000	124,991	0	808	2,173	(3,945)	124,027	0
Ashland Inc. Chair in Chemical Engineering	01/20/99	1,000,000	1,000,000	2,284,236	0	0	39,436	(71,967)	2,251,705	0
Ashland Inc. Research Fellowship in Literacy and Leadership	12/08/04	200,000	200,000	447,829	0	0	7,732	(14,109)	441,451	0
Ashland Inc. Library Endowment	09/26/00	1,000,000	1,000,000	2,472,563	0	0	42,919	(60,926)	2,454,555	0

University of Kentucky
Endowment Match Program
Table 7: Components of Change in Endowment Market Value
During Fiscal Year 2014 - 2015

Endowment Name	Date Estab.	Prior to 07/01/14			During Fiscal Year 2014 - 2015				Outstanding Pledges as of 06/30/15	
		State Funds Received	Gifts Received	Market Value as of 07/01/14	State Funds Received	Gifts Received and Transfers	Investment Earnings (Loss)	Earnings Distributed ¹		Market Value as of 06/30/15
Ashwini Anand, M.D. Professorship in Cardiology	04/06/05	50,000	50,000	148,702	0	0	2,631	0	151,333	0
Barnhart Memorial Fellowship in Geography	10/05/05	73,295	73,345	205,340	0	0	(70)	0	205,270	0
Barnstable Brown Kentucky Diabetes & Obesity Center Endowed Chair	06/18/09	500,000	500,000	1,298,202	0	0	22,412	(40,901)	1,279,714	0
Barnstable Brown Kentucky Diabetes & Obesity Center Research	06/18/09	2,047,991	2,047,991	5,839,829	0	0	102,586	(53,822)	5,888,593	0
Barnstable Brown Pediatric Diabetes Laboratories Research Endowment	09/01/06	500,000	501,000	991,518	0	0	17,541	0	1,009,059	0
Barnstable Brown Chair in Pediatrics Diabetes Research	02/13/00	900,000	900,000	2,061,313	0	0	36,466	0	2,097,779	0
Bayer Professorship in Pulmonary Medicine	03/02/99	177,500	177,500	377,773	0	0	6,522	(11,901)	372,393	0
Beaven-Eidetik Doctoral Research Fellowship	11/16/05	50,000	50,000	129,961	0	0	2,599	(2,062)	130,498	0
Beaven-Eidetik Research Fellowship in Developmental Disabilities and Mental Retardation	08/10/01	50,000	50,300	150,829	0	0	3,016	(2,393)	151,453	0
Belinda Mason Carden and Paul Mason Professorship in HIV/AIDS Research	08/11/98	151,960	181,810	366,407	0	0	6,326	(11,544)	361,189	0
Bell Alcohol and Addictions Chair	01/20/06	852,368	896,750	1,873,134	0	0	32,338	(59,014)	1,846,458	0
Benjamin C. Warf, M.D., Lectureship/Fellowship in Pediatric Neurosurgery	01/09/01	100,000	100,000	224,746	0	0	3,976	0	228,722	0
Bill & Marie Cull Fellowship Endowment Fund	03/01/05	100,000	100,393	214,808	0	0	3,708	(6,767)	211,749	0
Blazie Family Professorship in Electrical and Computer Engineering	03/25/02	50,000	60,000	132,204	0	0	2,282	(4,165)	130,321	0
Bobby C. Pass Professorship	04/27/05	54,846	87,882	158,585	0	50	2,739	(4,997)	156,377	0
Boehringer Ingelheim Pulmonary Endowed Research Professorship	07/26/02	185,000	185,000	443,154	0	0	7,651	(13,962)	436,842	0
Bonnie Jean Cox Graduate Research Endowment in Gender and Women's Studies	12/19/01	91,810	91,910	209,096	0	0	3,303	0	212,400	0
Boone Graduate Fellowship	07/21/06	50,000	50,000	134,699	0	8,000	(1,883)	0	140,815	0
Braden-Clark Fellowship in Parkinson's Disease Research	06/09/09	225,249	400,000	820,435	0	150,000	5,182	0	975,617	0
Brown and Williamson Research Fund	04/06/99	250,000	250,000	587,992	0	0	10,155	(18,531)	579,615	0
Brown-Forman Visiting Chair in Urban Design	12/19/01	500,000	502,051	1,123,535	0	0	19,397	(35,398)	1,107,534	0
Brown-McFarlan Endowed Fund	12/29/10	82,266	125,021	266,632	0	700	(1,859)	0	265,474	0
Bruce A. Lucas, M.D. Endowment for Urologic Research	03/07/01	70,000	70,074	149,341	0	50,000	3,139	(5,885)	196,595	0
Buckhorn Professor of Social Work	06/01/99	150,000	150,025	335,467	0	0	5,792	(10,569)	330,690	0
Buck-Kentucky Lung Cancer Research Chair Endowment Fund	10/22/02	300,000	792,494	1,330,998	0	0	22,979	(41,934)	1,312,042	0
Burt L. Sims Graduate Fellowship	10/30/03	50,000	50,000	112,749	0	0	1,946	(3,552)	111,144	0
Bush-Holbrook Endowed Chair/Professorship in the English Department	09/25/06	574,788	574,789	1,374,104	0	0	(57,236)	0	1,316,868	0
Bush-Holbrook Graduate Fellowship in the College of Arts and Sciences	09/25/06	324,399	324,399	886,865	0	0	15,689	0	902,554	0
Byron Young Fellowship for Neuroscience Research	05/27/09	50,000	50,000	133,446	0	0	2,361	0	135,807	0
Byron Young, MD Research Endowment for Neurosurgery Residents	08/10/09	100,000	166,000	348,496	0	28,750	4,682	0	381,928	0
C. M. Gatton Endowment Fund	05/04/99	1,024,500	1,025,180	2,438,213	0	0	47,307	(81,826)	2,403,694	0
C. M. Gatton Endowment Fund - Chairs	05/04/95	6,000,000	6,000,100	14,500,150	0	0	250,338	(456,843)	14,293,645	0

University of Kentucky
Endowment Match Program
Table 7: Components of Change in Endowment Market Value
During Fiscal Year 2014 - 2015

Endowment Name	Date Estab.	Prior to 07/01/14			During Fiscal Year 2014 - 2015				Outstanding Pledges as of 06/30/15	
		State Funds Received	Gifts Received	Market Value as of 07/01/14	State Funds Received	Gifts Received and Transfers	Investment Earnings (Loss)	Earnings Distributed ¹		Market Value as of 06/30/15
C. M. Gatton Endowment Fund - Faculty Research & Development	05/04/95	2,000,000	2,000,000	4,926,988	0	0	85,062	(155,230)	4,856,820	0
C. M. Gatton Endowment Fund - Professorship	05/04/95	2,000,000	2,000,000	4,758,190	0	0	82,148	(149,912)	4,690,426	0
C. Michael Garver Endowment Fund - Fellowship Fund	09/11/00	750,000	751,039	1,559,322	0	0	27,585	0	1,586,907	0
Cardinal Hill Rehabilitation Hospital Chair in Neurorehabilitation	06/06/99	1,000,000	1,000,150	2,084,804	0	0	35,993	(65,683)	2,055,113	0
Cardinal Hill Rehabilitation Hospital Chair in Spinal Cord Injury Rehabilitation	06/06/99	500,000	500,000	1,019,742	0	0	17,605	(32,128)	1,005,220	0
Cardinal Hill Rehabilitation Hospital Fellowship	06/01/06	40,000	40,000	86,639	0	0	1,496	(2,730)	85,405	0
Cardinal Hill Rehabilitation Hospital Professorship in Traumatic Brain Injury	06/06/99	500,000	500,000	1,057,806	0	0	18,713	0	1,076,519	0
Cardiology Associates of Kentucky Fellowship Fund	09/13/01	137,500	137,500	307,111	0	0	5,302	(9,676)	302,737	0
Cardiovascular Research and Education Fund	07/26/06	50,000	62,200	147,836	0	0	2,615	0	150,451	0
Carmen L. Buck Professorship/Chair in Oncology Research Endowment Fund	10/10/02	429,453	429,453	1,062,105	0	0	18,337	(33,463)	1,046,979	0
Carol Lee Robertson Endowed Professorship in Literacy	02/04/99	160,000	266,400	480,942	0	5,000	8,443	(15,220)	479,165	0
Caroline Frances Ransdell Research Professorship	03/06/01	51,179	51,179	103,849	0	0	1,793	(3,272)	102,370	0
Carroll M. Redford, Jr. Scholarship Endowment	08/15/06	50,000	77,225	136,412	0	5,100	2,844	(4,371)	139,986	0
Center for Aluminum Technology Endowment Fund	06/29/99	1,775,000	1,775,000	4,223,710	0	0	83,506	(133,199)	4,174,017	0
Center for Financial Services Research Endowment	08/28/00	50,000	50,000	108,485	0	0	1,873	(3,418)	106,940	0
Center for Real Estate Studies Endowment	08/28/00	50,000	50,000	100,382	0	0	1,776	0	102,158	0
Center for Sports Marketing Endowment Fund	06/15/00	75,000	75,000	160,860	0	0	2,777	(5,068)	158,569	0
Center on Aging Foundation Fellowship in Gerontology	02/01/99	75,000	75,600	164,437	0	100	2,839	(5,181)	162,196	0
Center on Membrane Sciences Graduate Student Mentoring Endowment	05/25/99	25,000	27,750	63,815	0	0	1,102	(2,011)	62,906	0
Charles D. Lucas, Jr. Endowment for Parkinson's Disease Research	02/12/04	50,000	54,424	162,079	0	235,000	7,088	0	404,167	0
Charles H. Nicholson, M.D. Residency Fellowship in General Surgery	12/26/02	62,100	87,756	185,873	0	0	3,209	(5,856)	183,226	0
Charles Parker Graves Endowed Professorship Fund	05/15/01	57,335	63,730	131,676	0	0	2,273	(4,149)	129,800	0
Charles S. Cassis Professorship of Law	07/19/00	102,984	103,485	217,013	0	0	3,839	0	220,852	0
Charles T. Wethington, Jr. Graduate and Professional Fellowship	12/09/98	500,000	500,000	1,108,413	0	0	19,136	(34,922)	1,092,628	0
Charles W. Hammond Professorship in Chemistry	05/12/04	340,000	349,405	1,126,330	0	0	19,925	0	1,146,255	0
Charlotte R. Schmidlapp Fellowship in Gerontology	01/05/01	150,000	150,000	314,214	0	0	5,425	(9,900)	309,739	0
Charlotte R. Schmidlapp Fellowship in Gynecologic Oncology	09/10/02	100,000	100,000	236,643	0	0	4,086	(7,456)	233,273	0
Chellgren Endowed Chair in Corporate Strategy	06/02/00	500,000	500,153	1,079,205	0	0	18,632	(34,001)	1,063,835	0
Chellgren Fund for Excellence	01/05/05	2,250,000	2,258,850	4,981,073	0	(2,000)	85,830	(156,879)	4,908,024	0
Chellgren Lecturer Series	05/05/99	100,000	100,000	211,820	0	0	3,657	(6,674)	208,803	0
Children's Miracle Network Research Chair #3	10/06/04	1,000,000	1,000,000	2,482,358	0	0	42,855	(78,207)	2,447,007	0
Children's Miracle Network Research Chair in Pediatrics, No.2	12/08/98	500,000	504,303	1,228,789	0	0	21,214	(38,714)	1,211,289	0
Class of 1949 Fellowship Endowment Fund	11/13/00	50,000	93,241	149,579	0	0	2,598	(3,545)	148,632	0
Clay Lancaster Endowed Professorship in Historic Preservation	03/07/00	250,500	275,941	638,105	0	0	12,616	(20,123)	630,598	0

University of Kentucky
Endowment Match Program
Table 7: Components of Change in Endowment Market Value
During Fiscal Year 2014 - 2015

Endowment Name	Date Estab.	Prior to 07/01/14			During Fiscal Year 2014 - 2015				Outstanding Pledges as of 06/30/15	
		State Funds Received	Gifts Received	Market Value as of 07/01/14	State Funds Received	Gifts Received and Transfers	Investment Earnings (Loss)	Earnings Distributed ¹		Market Value as of 06/30/15
Clifford J. Swauger, Jr. Summer Graduate Fellowship	07/28/05	59,160	59,565	141,144	0	0	(1,456)	0	139,688	0
College of Law 2002 Memorials Fellowship Endowment Fund	12/31/03	50,922	83,535	149,732	0	7,200	533	(2,663)	154,802	0
College of Nursing Millennium Fund	12/05/00	95,968	98,134	212,538	0	0	3,669	(6,696)	209,511	0
College of Pharmacy Parent & Alumni Scholarship/Fellowship Endowment Fund	06/22/02	51,454	57,075	143,174	0	0	2,471	(4,509)	141,136	0
Commonwealth Professorship of Minimally Invasive Surgery	09/25/98	100,000	100,000	218,472	0	0	3,772	(6,883)	215,361	0
CompEd, Inc. Fellowship Fund	06/06/02	50,000	110,000	179,995	0	0	3,108	(5,671)	177,432	0
Constance Wilson Endowed Professorship in Mental Health	06/24/99	50,000	84,103	153,170	0	100	2,654	(4,839)	151,085	0
Cottrill-Rolfes Chair in Catholic Studies	10/28/05	500,000	501,000	1,062,028	0	0	(7,986)	0	1,054,043	0
Cralle Foundation/Joan Cralle Day Endowed Fellowship Fund	12/11/01	300,000	300,000	683,240	0	0	11,796	(21,526)	673,509	0
Cralle-Day Children at Risk Endowment	07/31/06	500,000	500,000	1,164,663	0	0	20,517	(3,087)	1,182,093	0
Creed Fulton Smith Endowed Fellowship Fund	01/31/02	50,000	50,000	118,310	0	0	2,043	(3,727)	116,625	0
CSX Transportation Graduate Fellowship Fund	02/23/01	50,000	53,538	116,520	0	0	2,304	(3,675)	115,149	0
Cynthia Shaw Crispen Chair in ALS Disease Research	11/15/99	500,000	500,325	1,015,596	0	0	17,534	(31,997)	1,001,132	0
Databeam Professorship in Electrical & Computer Engineering	11/05/01	80,000	85,000	186,891	0	0	3,227	(5,888)	184,229	0
David B. Stevens, M.D. Medical Fellowship Endowment	02/09/07	50,000	50,000	100,585	0	0	1,778	0	102,363	0
David B. Stevens, M.D. Professorship or Chair in Orthopaedic Surgery	04/12/02	50,000	50,000	175,395	0	0	3,103	0	178,498	0
David H. and Barbara Schlund Kaufman Professorship	06/05/00	50,000	55,021	117,951	0	0	2,332	(3,720)	116,563	0
Della Marie Johnson Endowed Research Fund	03/10/06	50,000	60,373	113,099	0	1,095	1,997	(1,806)	114,386	0
Deloitte Foundation Professorship in Accounting	01/17/07	121,525	163,775	381,153	0	0	6,598	(12,039)	375,712	0
Delta Dental Plan of Kentucky Clinical Research Center Endowment	08/21/02	750,000	750,000	1,903,761	0	0	32,868	(59,980)	1,876,649	0
Dennis M. TeKrony Fund for Seed Science Research	03/31/08	50,929	50,929	124,394	0	0	2,148	(3,919)	122,622	0
DePuy Neuro Fellowship	06/19/00	500,000	501,608	1,016,193	0	0	17,387	(31,865)	1,001,715	0
DePuy Neuro/Spine Surgery Fund	06/19/00	500,000	500,000	1,033,892	0	0	17,705	0	1,051,597	0
DePuy Orthopaedic Fellowship	06/19/00	235,000	235,000	540,407	0	0	9,560	0	549,967	0
Dermontti F. & Regina M. Dawson Graduate Fellowship in Education	02/20/01	50,000	50,300	105,153	0	0	1,831	(2,163)	104,822	0
Development Dimensions International Professorship in Behavioral Health	03/17/00	100,000	100,050	211,215	0	0	3,647	(6,655)	208,207	0
Division of Urology Leadership Endowment for Resident Research and Education	04/27/10	240,000	242,300	609,572	0	0	10,524	(19,205)	600,891	0
Don Corum and National Nursery Products/Landscape Research Endowment	05/04/99	50,000	50,000	111,191	0	0	1,920	(3,504)	109,607	0
Donald L. and Gertrude L. Lester Professorship in Mechanical Engineering	03/18/02	100,000	100,000	240,915	0	0	4,763	(7,598)	238,081	0
Doris Nowak and William E. Stilwell, III Graduate Fellowship in Educational and Counseling Psychology	08/15/06	50,000	72,260	135,304	0	4,025	2,446	(4,348)	137,427	0
Dorothy A. Miller Research Professorship in Social Work Education	01/27/00	100,000	100,705	213,096	0	0	3,679	(6,714)	210,061	0

University of Kentucky
Endowment Match Program
Table 7: Components of Change in Endowment Market Value
During Fiscal Year 2014 - 2015

Endowment Name	Date Estab.	Prior to 07/01/14			During Fiscal Year 2014 - 2015				Market Value as of 06/30/15	Outstanding Pledges as of 06/30/15
		State Funds Received	Gifts Received	Market Value as of 07/01/14	State Funds Received	Gifts Received and Transfers	Investment Earnings (Loss)	Earnings Distributed ¹		
Dorothy Leathers Graduate Fellowship Fund	02/23/99	25,000	40,250	74,077	0	1,635	(2,245)	0	73,466	0
Dorothy Luther Nursing Fellowship	06/25/03	50,759	52,759	127,388	0	0	2,199	(4,014)	125,574	0
Douglas A. and Carole A. Boyd Professorship in Communication	05/06/11	100,674	100,674	230,629	0	0	3,982	(7,266)	227,345	0
Douglas J. Von Allmen Center for Entrepreneurship & E-Commerce	09/19/00	2,000,000	2,002,000	4,120,277	0	0	71,135	(129,814)	4,061,598	0
Douglas J. Von Allmen School of Accountancy Endowed Chair	09/19/00	2,000,000	2,005,500	4,129,497	0	0	71,294	(130,104)	4,070,687	0
Dr. and Mrs. C. Milton Coughenour Rural Sociology Professorship	05/17/00	100,000	100,000	214,901	0	0	3,710	(6,771)	211,840	0
Dr. Anthony N. DeMaria Cardiovascular Imaging Chair	05/09/05	500,000	506,500	1,213,781	0	0	20,954	(38,238)	1,196,496	0
Dr. Claire Louise Caudill Professorship in Family Medicine	09/24/96	741,880	742,100	1,686,848	0	0	14,133	(53,145)	1,647,835	0
Dr. Donald T. Frazier Professorship	01/17/03	50,000	50,000	166,071	0	0	2,938	0	169,008	0
Dr. E. Vernon Smith and Eloise C. Smith Professorship in Macular Degeneration	05/11/06	100,000	100,000	254,388	0	0	4,500	0	258,888	0
Dr. E. Vernon Smith and Eloise C. Smith Alzheimer's Research Endowed Chair Fund	05/11/06	2,000,000	6,538,235	9,292,958	0	279,812	36,988	0	9,609,758	0
Dr. E. Vernon Smith and Eloise C. Smith Macular Degeneration Endowed Chair Fund	05/11/06	2,245,133	2,250,000	4,908,583	0	0	84,744	(154,649)	4,838,677	0
Dr. E. Vernon Smith and Eloise C. Smith Professorship in American History	05/11/06	100,000	100,000	234,251	0	0	4,144	0	238,395	0
Dr. E. Vernon Smith and William E. Smith Endowed Faculty Fellowship in the College of Business and Economics	05/11/06	100,000	100,000	214,649	0	0	3,706	(6,763)	211,592	0
Dr. E. Vernon Smith, Bertice Henry Smith and Bertice Harold Smith Professorship in Nursing	05/11/06	100,000	100,000	220,696	0	0	3,810	(6,953)	217,552	0
Dr. Fred W. Zechman Professorship	01/17/03	50,000	50,000	145,541	0	0	(39,732)	0	105,809	0
Dr. Jamie Jacobs Medical Student Scholarship	06/12/02	50,000	50,000	107,681	0	0	1,859	(3,393)	106,148	0
Dr. Judith Ann Powell Pachtman Professorship or Chair in Obstetrics & Gynecology	01/19/01	50,000	51,000	176,584	0	0	3,049	(5,563)	174,070	0
Dr. Laurie L. Humphries Endowed Chair in Child Psychiatry	06/30/10	500,000	1,250,000	2,222,218	0	0	38,365	(70,013)	2,190,570	0
Dr. Louis L. Boyarsky Professorship	01/17/03	50,000	50,000	104,031	0	0	(648)	0	103,383	0
Dr. Richard R. & Dorothy Hillenmeyer Crutcher Scholarship Fund	02/01/01	200,000	200,000	458,184	0	0	7,910	(14,436)	451,659	0
Dr. Robert and Linda Granacher Scholarship	03/30/11	50,132	50,133	126,150	0	0	2,232	0	128,382	0
Dr. Robert D. Hayes Endowed Graduate Fellowship Fund	06/01/01	50,000	52,532	123,507	0	2,000	2,481	(3,916)	124,072	0
Dr. Robert D. Marciani Endowed Fund in Oral & Maxillofacial Surgery & Oral Health Research	12/04/09	59,989	156,750	282,554	0	6,000	5,818	0	294,372	0
Dr. Shih-Chun Wang Professorship in Physiology	10/27/00	50,000	51,077	116,250	0	0	1,680	0	117,930	0
Dr. Thomas L. Skinner Professorship in Physiology	06/21/00	50,000	53,000	160,132	0	0	2,833	0	162,965	0
Dr. William A. & Ann T. Withington Graduate Student Support Fund	10/30/00	68,510	69,660	213,507	0	0	(2,339)	0	211,168	0
Dr. William Jack Carey Professorship in Emergency Medicine	01/09/01	50,000	51,814	174,476	0	0	(7,217)	0	167,258	0
Dr. William R. Willard Professorship in Behavioral Science	02/26/06	41,205	43,288	114,581	0	15,617	1,869	0	132,067	0

University of Kentucky
Endowment Match Program
Table 7: Components of Change in Endowment Market Value
During Fiscal Year 2014 - 2015

Endowment Name	Date Estab.	Prior to 07/01/14			During Fiscal Year 2014 - 2015				Outstanding Pledges as of 06/30/15	
		State Funds Received	Gifts Received	Market Value as of 07/01/14	State Funds Received	Gifts Received and Transfers	Investment Earnings (Loss)	Earnings Distributed ¹		Market Value as of 06/30/15
Drs. Barbara and James Holsinger Professorship in Anatomy	03/15/01	115,000	115,000	267,631	0	0	4,621	(8,432)	263,820	0
DuMez Faculty Research Development Fund	12/30/07	50,000	56,000	124,231	0	0	2,145	(3,914)	122,462	0
E. Preston Hicks Professorship for Orthodontics & Oral Health Research	09/30/04	477,001	486,335	1,192,947	0	1,000	20,878	(18,917)	1,195,908	0
E.A. Ford, III Endowment for ALS Research	03/26/04	50,000	55,000	140,742	0	0	2,490	0	143,232	0
Earl F. & Jean M. Lockwood Professorship of International Commerce and Entrepreneurship	09/28/00	200,000	200,000	423,205	0	0	7,306	(13,334)	417,178	0
Earl Platt Slone Endowed Professorship in Pharmacy Practice and Science	09/12/02	142,014	144,923	390,889	0	1,267	7,773	(12,341)	387,588	0
Earle C. Clements Graduate Research Fellowship	03/14/07	125,000	125,000	275,600	0	250	4,762	(8,687)	271,925	0
Earth and Environmental Sciences Endowed Alumni Professorship	11/07/06	67,400	78,137	180,765	0	10,200	1,408	0	192,374	0
Edith D. Gardner Chair in Cancer Research	11/27/89	789,700	789,700	1,883,049	0	0	14,308	0	1,897,357	0
Elise White Boyd Graduate Fellowship	12/09/04	125,000	139,244	279,255	0	0	4,821	(8,798)	275,278	0
Eloise C. Smith and Dr. E. Vernon Smith Medical Scholarship Endowment	05/11/06	800,000	800,000	1,725,000	0	0	29,781	(54,348)	1,700,433	0
Emery A. Wilson, M.D. Dean's Chair	05/31/07	99,037	104,624	279,953	0	300	4,953	0	285,207	0
Endowed Chair in Neuroscience	12/31/01	500,066	500,066	1,099,745	0	0	19,455	0	1,119,200	0
Endowed Chair in Neurosurgery	05/19/99	500,000	500,000	1,128,669	0	0	19,486	(35,560)	1,112,595	0
Endowed Chair in Orthopaedic Surgery Research	06/23/04	500,000	524,900	1,265,417	0	0	(66,771)	(39,640)	1,159,007	0
Endowed Chair/Distinguished Scholar in Rural Health Policy	09/03/01	1,000,000	1,000,000	2,544,522	0	0	51,471	0	2,595,993	0
Endowed Professorship in Cardiology	04/19/00	50,000	149,755	209,807	0	0	24,188	(2,255)	231,741	0
Endowed Professorship in Forestry and Environmental Sciences	12/31/01	500,066	500,066	1,179,870	0	0	20,377	(37,185)	1,163,061	0
Endowed Professorship in Neuro-Urologic Research	02/29/04	336,216	336,216	715,126	0	0	12,346	(22,531)	704,941	0
Ernst & Young Professorship of Accountancy	08/12/87	153,065	282,385	527,801	0	0	9,112	(16,629)	520,285	0
Ethelyn O'Neal Endowed Fellowship Fund	05/15/06	900,000	1,003,343	2,202,530	0	0	38,025	(69,392)	2,171,163	0
Evalyn Anderson Edwards Professorship	10/29/04	250,000	250,000	550,760	0	0	9,509	(17,352)	542,917	0
Everett H. Metcalf, Jr. Professorship of Law	06/19/01	200,000	200,000	472,684	0	0	(6,508)	0	466,176	0
Floyd H. Wright Research Endowment	12/08/98	1,000,000	1,000,000	2,333,659	0	0	40,289	(73,524)	2,300,424	0
Frank J. Derbyshire Research Professorship Endowment	12/06/99	100,000	128,858	283,922	0	0	5,023	0	288,945	0
G. Dan and Virginia Martin Pediatric Research Fund	12/31/08	100,000	100,000	255,595	0	0	4,413	(8,053)	251,955	0
Gaines Center Lafayette Seminar Endowment	03/18/04	111,230	138,152	283,143	0	276	4,893	(8,925)	279,387	0
Gallion & Baker Professorship	08/16/00	100,000	100,350	209,947	0	0	3,714	0	213,661	0
Gartner Group Chair in Network Engineering	09/15/98	900,000	900,000	2,069,222	0	0	35,724	(65,193)	2,039,753	0
Gary B. Knapp Endowed Chair in Arts Administration	06/24/99	500,000	500,000	1,099,063	0	0	19,130	(22,891)	1,095,303	0
Gary B. Knapp Endowment in Support of Business Education and the Arts	06/24/99	1,000,000	1,000,000	2,177,999	0	0	37,602	(68,620)	2,146,981	0
George A. Digenis Professorship/Chair in Drug Design and Discovery in Pharmaceutical Sciences	03/12/02	68,650	85,250	187,806	0	0	3,713	(5,923)	185,597	0
George A. Young Endowment for Stroke Research	08/02/02	1,479,600	1,968,415	6,186,493	0	0	(2,340)	(194,624)	5,989,529	0
George and Betty Blanda Professorship in Education	01/25/00	100,000	100,000	209,047	0	0	3,609	(6,586)	206,069	0

University of Kentucky
Endowment Match Program
Table 7: Components of Change in Endowment Market Value
During Fiscal Year 2014 - 2015

Endowment Name	Date Estab.	Prior to 07/01/14			During Fiscal Year 2014 - 2015					Outstanding Pledges as of 06/30/15
		State Funds Received	Gifts Received	Market Value as of 07/01/14	State Funds Received	Gifts Received and Transfers	Investment Earnings (Loss)	Earnings Distributed ¹	Market Value as of 06/30/15	
George E. Mitchell, Jr. Graduate Fellowship Fund for Animal Sciences	02/17/99	120,000	131,133	284,029	0	0	4,904	(8,949)	279,984	0
George Schwert Professorship in Biochemistry	10/18/00	235,000	235,000	721,617	0	0	(64,739)	0	656,879	0
Georgia Davis Powers Endowment Fund	01/22/07	500,000	503,214	1,218,760	0	50	22,996	(10,434)	1,231,373	0
Gerald L. Nichols Fellowship Fund	12/22/98	125,000	125,000	267,537	0	0	4,619	(8,429)	263,727	0
Geraldine L. Cosby Scholarship	12/09/98	45,000	45,000	99,334	0	0	1,715	(3,130)	97,919	0
Gertrude F. Ribble Academic Fund	04/29/98	1,000,000	1,152,209	2,564,155	0	0	(45,387)	(20,259)	2,498,509	0
Gifford Blyton Professorship in Oral Communication and Forensics	06/04/02	197,926	201,226	472,396	0	0	8,156	(14,883)	465,668	0
Gill Foundation Chair in Preventive Cardiology ³	01/20/98	0	1,000,000	1,106,485	0	0	19,575	0	1,126,059	0
Gill Foundation Professorship in Interventional Cardiology ³	12/19/97	0	200,225	202,784	0	0	3,501	(6,389)	199,896	0
Gill Heart Institute Endowment ³	12/26/02	0	1,168,759	1,444,850	0	0	25,560	0	1,470,411	0
Gloria W. Singletary Chair in Women's Health	05/29/02	500,150	502,300	1,199,024	0	0	20,701	(37,776)	1,181,948	0
Good Samaritan Chair in Health Education, Research, Health Promotion and Preventive Services	03/02/00	500,000	500,000	1,127,832	0	0	22,298	(35,567)	1,114,562	0
Good Samaritan Professorship or Chair in Community Health Nursing	09/19/02	500,000	500,000	1,079,053	0	0	18,629	(33,997)	1,063,686	0
Gordon L. Hyde, M.D. Chair in Vascular Surgery	12/20/96	189,445	588,332	1,211,646	0	0	20,925	(38,187)	1,194,385	0
Graduate Studies and Research Endowed Fund	09/10/02	130,000	130,000	302,366	0	0	(4,057)	0	298,310	0
Gregory M. Jasko Cardiovascular Research Endowment in the Division of Cardiology	07/01/03	142,000	144,036	333,450	0	0	5,739	0	339,190	0
Guy M. Davenport Endowed Professorship in English	11/16/05	50,000	1,815,893	2,060,332	0	0	19,998	0	2,080,331	0
H. Bruce Price Professorship in Agricultural Economics	05/19/94	50,000	60,734	156,551	0	0	2,710	(4,945)	154,317	0
H. E. Katterjohn Professorship in Engineering	12/01/03	250,000	251,811	583,758	0	0	10,078	(18,392)	575,445	0
H. Lester Reynolds Professorship in Engineering	11/13/02	100,000	104,000	254,846	0	0	4,400	(8,029)	251,216	0
Hajja Razia Sharif Sheikh Islamic Studies Professor	02/14/11	100,000	100,000	230,940	0	0	3,987	(7,276)	227,651	0
Halcomb Endowed Fellowship in Medicine and Engineering	10/21/08	500,000	501,984	1,210,371	0	24,999	20,712	(38,199)	1,217,883	0
Hardin-Drnevich-Huang Professorship in Geotechnical Engineering	07/21/06	156,205	178,431	350,951	0	1,000	6,070	(11,080)	346,940	0
Harold R. Burton Endowed Professorship in Plant Biochemistry	05/01/00	618,750	618,750	1,410,776	0	0	24,356	(44,448)	1,390,685	0
Harper Industries, Inc. Graduate Fellowship Endowment Fund	10/14/99	200,000	200,000	479,749	0	0	8,285	(15,120)	472,915	0
Harry B. Kostenbauder Professorship in Pharmacy ³	04/24/02	200,000	34,825	271,195	0	250	4,684	(8,546)	267,583	0
Harry E. Wheeler Chair in Plant Mycology	09/28/00	500,000	500,000	1,033,952	0	0	17,851	(32,576)	1,019,226	0
Helen Edwards Abell Chair in Historic Preservation	03/15/00	500,937	502,612	1,100,202	0	0	18,994	(34,663)	1,084,533	0
Helen Thacker Graduate Fellowship in Educational and Counseling Psychology	06/14/00	100,000	100,000	219,075	0	0	4,331	(6,909)	216,498	0
Hellmann Family Fund in the Division of Infectious Diseases	02/07/02	50,000	50,000	107,478	0	0	1,901	0	109,380	0
Hellmann Family Scholarship Endowment Fund	04/11/08	50,000	50,000	123,512	0	0	2,132	(3,891)	121,753	0
Hildegard Rose Shapiro Endowed Equine Research Fund	03/20/09	500,000	567,137	1,383,457	0	0	23,884	(43,587)	1,363,754	0
Holbrook Law Library Endowment	05/24/01	150,000	185,413	423,880	0	5,000	8,568	(10,507)	426,941	0

University of Kentucky
Endowment Match Program
Table 7: Components of Change in Endowment Market Value
During Fiscal Year 2014 - 2015

Endowment Name	Date Estab.	Prior to 07/01/14			During Fiscal Year 2014 - 2015					Outstanding Pledges as of 06/30/15
		State Funds Received	Gifts Received	Market Value as of 07/01/14	State Funds Received	Gifts Received and Transfers	Investment Earnings (Loss)	Earnings Distributed ¹	Market Value as of 06/30/15	
Infectious Diseases Research Professorship in Internal Medicine	05/10/02	50,000	50,000	120,008	0	0	2,072	(3,781)	118,299	0
Institute of Rural Journalism & Community Issues Endowed Fund for Excellence	03/28/05	722,097	732,818	1,359,007	0	50,690	24,421	(39,296)	1,394,822	0
Isaac T. Stewart Fellowship Fund	12/15/05	50,000	50,000	97,975	0	0	1,723	(779)	98,919	0
J. C. Ferm Graduate Fellowship Fund	11/13/00	50,000	69,944	153,171	0	0	(3,880)	0	149,291	0
J. Gary Maynard, Jr. Professorship for Periodontology and Oral Health Research	11/10/05	300,259	308,208	822,470	0	1,700	16,681	0	840,851	0
J. J. B. Hilliard, W.L. Lyons, Inc. Chair for Innovation Management	06/22/99	500,000	500,000	1,083,288	0	0	18,702	(34,130)	1,067,861	0
Jack & Linda Gill College of Arts & Sciences Research Excellence Fund	06/18/01	500,000	500,000	937,496	0	0	(24,647)	0	912,849	0
Jack & Linda Gill Engineering Research Excellence Fund	06/18/01	500,000	500,000	938,967	0	0	8,011	(13,061)	933,916	0
Jack M. Gill Chair in Internal Medicine ³	01/20/98	1,000,000	0	1,094,046	0	0	18,888	(34,469)	1,078,465	0
Jacqueline A. Noonan - CMN Research Chair in Pediatrics ³	12/08/08	1,000,000	1,002,276	2,199,365	0	0	38,908	0	2,238,273	0
Jacqueline A. Noonan Professorship in Pediatrics	01/20/98	200,000	57,443	294,291	0	376	5,085	(9,278)	290,474	0
Jacqueline K. Resinger Fellowship in Medical Laboratory Science	02/27/04	50,000	50,000	118,426	0	0	2,045	(3,731)	116,739	0
Jacqueline Y. Miller Smith Visiting Professorship in Women's Health & Rheumatology	03/16/06	54,225	54,825	127,168	0	0	2,250	0	129,418	0
James & Mary Lassiter Endowed Chair	12/22/00	500,000	500,000	1,066,416	0	0	(15,228)	0	1,051,187	0
James & Mary Lassiter Endowed Fellowship	05/17/01	200,000	219,025	443,613	0	0	7,659	(13,976)	437,295	0
James & Mary Lassiter Endowed Professorship	05/17/01	100,000	100,000	212,959	0	0	3,677	(6,710)	209,926	0
James and Cora Sanders Nursery/Landscape Research Endowment	04/28/99	26,195	29,145	61,918	0	0	1,069	(1,951)	61,037	0
James and Diane Stuckert BS/MBA Program Endowment Fund	04/02/07	3,200,000	3,200,000	7,144,661	0	0	123,349	(225,100)	7,042,910	0
James and Diane Stuckert BS/MBA Program Endowment Fund	04/02/07	1,800,000	1,800,000	3,928,832	0	0	67,830	(123,782)	3,872,879	0
James and Diane Stuckert Professorship in Service Learning	08/23/05	250,000	250,000	526,442	0	0	9,089	(16,586)	518,944	0
James Arvle Thacker Fund	06/30/04	50,000	50,000	171,374	0	0	3,467	0	174,840	0
James E. & Christine D. Lockett Endowed Fellowship Fund	08/23/05	400,000	400,078	864,163	0	0	14,919	(27,226)	851,856	0
James F. Glenn, M.D. Endowed Chair in Urology	10/25/00	600,000	600,000	1,358,657	0	0	23,457	(42,806)	1,339,308	0
James F. Hardymon Chair in Manufacturing Systems	02/19/99	500,000	500,000	1,066,238	0	0	18,408	(33,593)	1,051,053	0
James F. Hardymon Chair in Urologic Research	04/06/00	1,000,000	1,000,000	2,043,095	0	0	35,273	(64,370)	2,013,998	0
James F. Hardymon Chairs in Networking	02/19/99	500,000	505,293	1,072,150	0	0	18,510	(33,779)	1,056,880	0
James F. Hardymon Graduate Fellowship Program	02/19/99	500,000	500,000	1,066,238	0	0	18,408	(33,593)	1,051,053	0
James L. & Suzanne H. Elliott Professorship in Pediatrics	12/09/04	47,937	47,937	141,352	0	0	(1,374)	0	139,978	0
James R. Boyd Professorship in Electrical Engineering	01/28/98	100,000	143,168	285,719	0	0	4,934	(9,005)	281,649	0
James Stephen Brown Graduate Appalachian Studies Fund	02/20/99	50,330	51,200	114,704	0	0	(935)	0	113,769	0
James W. Holsinger, Jr. M.D. Professorship in Neurosciences	11/26/03	50,000	50,000	149,154	0	0	(659)	(4,699)	143,796	0

University of Kentucky
Endowment Match Program
Table 7: Components of Change in Endowment Market Value
During Fiscal Year 2014 - 2015

Endowment Name	Date Estab.	Prior to 07/01/14			During Fiscal Year 2014 - 2015					Outstanding Pledges as of 06/30/15
		State Funds Received	Gifts Received	Market Value as of 07/01/14	State Funds Received	Gifts Received and Transfers	Investment Earnings (Loss)	Earnings Distributed ¹	Market Value as of 06/30/15	
Jana Oliver Memorial Fellowship Fund	12/28/00	100,000	100,000	212,611	0	0	3,671	(6,698)	209,583	0
Janet Galloway Carter Chair in Rehabilitation Medicine	05/10/00	272,714	874,451	1,533,087	0	0	19,844	(48,421)	1,504,510	0
Janet H. Koller Endowment for Equine Research and Development	01/25/05	1,684,279	1,684,968	3,354,406	0	0	57,905	(105,671)	3,306,640	0
Janet H. Koller Equine Bioinformatics Research Endowment	09/30/05	2,000,000	2,000,113	4,099,045	0	0	70,768	(129,145)	4,040,668	0
Janet H. Koller Equine Infectious Diseases Research Endowment	08/31/05	2,000,000	2,000,000	4,099,057	0	0	70,769	(129,146)	4,040,680	0
Janet H. Koller Priority Response Research Endowment	01/25/05	1,000,000	1,000,000	2,072,336	0	0	35,778	(65,291)	2,042,822	0
Jason Alexander Gill Professorship in Cardiothoracic Surgery ³	12/19/97	0	200,000	237,957	0	0	4,108	(7,497)	234,568	0
Jefferson Morris Gill, Ph.D. Professorship in Cardiology ³	12/19/97	0	200,000	234,266	0	0	4,044	(7,381)	230,930	0
Jeffry N. and Jennifer S. Quinn Graduate Fellowship in Engineering	04/05/07	50,000	50,089	110,456	0	0	1,907	(3,480)	108,883	0
Jennifer Gill Roberts Professorship in Pediatric Cardiology ³	12/19/97	0	200,000	231,910	0	0	4,004	(7,307)	228,607	0
Jennifer S. Quinn M.D. and Jeffry N. Quinn Professorship in Pediatric Oncology Endowment	03/03/07	50,000	50,000	131,862	0	0	2,333	0	134,195	0
Jes & Clementine Schlaikjer Professorship - I ²	06/11/02	0	256,515	308,921	0	0	5,333	(9,733)	304,522	0
Jes & Clementine Schlaikjer Professorship - II ²	06/11/02	0	253,538	308,459	0	0	5,325	(9,718)	304,066	0
Jes E. and Clementine Mills Schlaikjer Chair in Equine Infectious Diseases ²	12/09/98	0	3,467,208	4,898,669	0	0	(80,207)	(103,558)	4,714,903	0
Joanne I. Bell Endowment in Critical Thinking and Social Policy Analysis	02/07/03	50,000	83,425	163,881	0	475	2,839	(5,169)	162,027	0
Joe A. & Cecil Dulin Wallace Fund	09/07/00	375,000	410,000	902,068	0	0	(3,501)	(7,112)	891,454	0
John A. Morris Library Endowed Research and Mission Support Fund ²	12/09/98	1,000,000	0	1,136,245	0	0	19,623	(35,810)	1,120,058	0
John B. and Jane B. Stephenson Endowed Graduate Fellowship	05/14/99	25,000	25,069	96,279	0	250	1,710	0	98,239	0
John C. Hubbard Endowment	11/22/05	122,010	122,010	270,510	0	0	(4,375)	0	266,135	0
John Edwin Partington and Gwendolyn Gray Partington Scholarship Fund	08/31/98	268,000	294,588	602,234	0	0	10,401	(18,980)	593,654	0
John H. Heick Professorship in Soil Science	01/22/01	100,000	100,000	215,595	0	0	3,722	(6,793)	212,524	0
John I. and Patricia J. Buster Endowment Fund in the College of Human Environmental Sciences	04/07/99	956,358	937,740	2,180,262	0	48,400	37,725	(69,042)	2,197,344	0
John L. and Ruth J. Southam Animal Biopathology Research Endowment	05/27/05	384,267	420,475	912,214	0	0	15,748	(28,739)	899,223	0
John L. Clarke, Jr. & Fred K. Knapp Entomology Graduate Student Research Fund	12/31/05	50,420	50,420	129,199	0	0	2,231	(4,071)	127,359	0
John Mink Professorship in Pediatric Dentistry in the College of Dentistry	11/25/98	509,559	515,708	1,505,230	0	1,750	26,509	(11,972)	1,521,516	0
John R. Gaines Endowed Chair in the Humanities	03/30/05	563,990	676,880	1,287,627	0	500	22,244	(40,575)	1,269,796	0
John R. Van Nagell, M.D. Chair in Gynecologic Oncology	12/12/00	392,000	592,000	1,270,151	0	0	21,759	(39,699)	1,252,210	0
John Russell Groves-Kentucky Housing Corporation Research Fund in Affordable Housing Design	06/11/02	300,000	300,000	687,827	0	0	11,875	(21,671)	678,031	0

University of Kentucky
Endowment Match Program
Table 7: Components of Change in Endowment Market Value
During Fiscal Year 2014 - 2015

Endowment Name	Date Estab.	Prior to 07/01/14			During Fiscal Year 2014 - 2015				Market Value as of 06/30/15	Outstanding Pledges as of 06/30/15
		State Funds Received	Gifts Received	Market Value as of 07/01/14	State Funds Received	Gifts Received and Transfers	Investment Earnings (Loss)	Earnings Distributed ¹		
John S. & Elizabeth A. Knight Chair Endowment Supplement ²	12/09/98	1,716,000	249,657	2,409,719	0	0	41,779	(69,703)	2,381,796	0
John W. Greene, Jr., M.D. Professorship in Obstetrics & Gynecology	05/01/01	425,000	507,055	1,132,548	0	0	19,553	(35,682)	1,116,418	0
Jorgi Nicholau Boom Ovarian Cancer Research Endowment	03/20/07	50,000	114,100	223,997	0	0	3,963	0	227,959	0
Joseph Hamburg Professorship in Rehabilitation Sciences ³	01/20/98	200,000	0	219,121	0	0	3,783	(6,904)	216,001	0
Joy Bale & George Street Boone Symposium in the Humanities	01/12/06	240,035	304,747	577,647	0	1,000	10,035	(18,256)	570,426	0
Judy and Byron Young Neuroscience Institute Endowed Professorship	07/20/06	100,000	100,000	235,151	0	0	4,160	0	239,310	0
Karri Casner Environmental Sciences Fellowship	01/17/05	100,000	100,000	212,652	0	0	3,671	(6,700)	209,623	0
Kate Spade & Company Foundation Endowed Professorship	12/31/04	125,000	125,000	325,021	0	0	5,611	(10,239)	320,392	0
Kathryn Louise Chellgren Endowed Professorship for Research in Family Studies	02/05/01	60,000	60,000	134,741	0	0	2,326	(4,245)	132,822	0
Kay Seeley Hoffman Research Endowment	02/29/08	99,652	99,652	282,537	0	2,200	5,034	0	289,771	0
Kaye Matthews Stone Memorial Fund for Pancreatic Cancer Research	02/08/02	50,000	81,650	198,708	0	3,285	3,541	0	205,534	0
Keeneland Concours d' elegance Endowment for Newborn Research to Benefit Kentucky Children's Hospital	06/01/06	200,000	200,110	525,463	0	0	(79,072)	0	446,391	0
Keith and Phyllis MacAdam Library Endowed Fund for American Music	12/06/00	75,000	75,100	191,272	0	0	3,801	(4,718)	190,355	0
Kenneth H. and Susan W. Beard Graduate Fellowship Fund	10/01/01	250,000	250,310	557,379	0	0	9,623	(17,561)	549,441	0
Kenneth N. and Carol L. Robertson Endowment Fund	11/01/04	100,000	160,523	279,872	0	10,000	5,112	(8,951)	286,032	0
Kentuckiana Masonry Institute Endowed Professorship	04/06/99	100,000	105,144	232,282	0	0	4,010	(7,318)	228,974	0
Kentucky Economic Development Endowment for Science & Technology	05/01/01	394,643	395,962	1,014,117	0	0	20,152	(25,013)	1,009,255	0
Kentucky Hospital Association Professorship and Research Fund	08/10/05	500,000	500,000	1,240,866	0	0	21,423	(39,095)	1,223,194	0
Kentucky Medical Services Foundation Chair in Pharmacy	12/12/12	500,000	500,000	1,801,501	0	0	31,102	(56,758)	1,775,845	0
Kentucky Pharmacists Association Professor of Leadership Endowed Fund	04/04/05	50,000	52,500	143,542	0	0	2,509	(2,275)	143,776	0
Kentucky Utilities Professorship in Electrical & Computer Engineering	06/11/02	50,000	50,000	129,392	0	0	2,234	(4,077)	127,549	0
Kevin Heidrich/Team 7 Endowment for ALS Patient Services Research	03/31/03	500,345	507,261	1,137,442	0	1,946	19,664	(35,877)	1,123,174	0
KiYoung Lee Graduate Fellowship	08/23/05	36,000	36,000	74,185	0	0	1,281	(2,337)	73,128	0
KPMG Professorship Endowment	05/10/05	50,000	182,650	314,697	0	0	5,433	(9,915)	310,216	0
Laramie L. Leatherman Professorship of Law II	04/01/99	100,000	100,000	210,111	0	0	3,627	(6,620)	207,118	0
Lauranne Laise Howell Graduate Fellowship in Economic Education	05/17/02	125,000	125,101	307,790	0	0	5,314	(9,697)	303,406	0
Lawson Endowment Fund - Professorship in Civil Engineering	11/04/02	250,000	250,000	625,421	0	0	10,798	(19,705)	616,514	0

University of Kentucky
Endowment Match Program
Table 7: Components of Change in Endowment Market Value
During Fiscal Year 2014 - 2015

Endowment Name	Date Estab.	Prior to 07/01/14			During Fiscal Year 2014 - 2015				Outstanding Pledges as of 06/30/15	
		State Funds Received	Gifts Received	Market Value as of 07/01/14	State Funds Received	Gifts Received and Transfers	Investment Earnings (Loss)	Earnings Distributed ¹		Market Value as of 06/30/15
Lawson Endowment Fund for Asphalt Research	11/04/02	650,001	650,001	1,590,435	0	0	27,458	(50,108)	1,567,785	0
Lee Todd, Jr. and Patricia B. Todd Orchestra Research Endowment	06/17/09	600,000	920,002	1,890,792	0	40,000	34,017	(39,936)	1,924,872	0
Leo P. Branstetter Alzheimer's Disease Research Fund	11/17/05	248,751	248,751	579,220	0	0	10,247	0	589,467	0
Leslie L. Martin Endowed Fellowship Fund	05/29/01	50,000	51,863	125,912	0	0	2,174	(3,967)	124,119	0
Leslie L. Martin Endowed Research Fellowship	08/31/05	50,000	50,000	109,846	0	0	1,896	(3,461)	108,282	0
Lewis Cockran Graduate Fellowship Fund	08/28/98	52,000	76,817	158,882	0	0	2,811	0	161,693	0
Lexington Herald-Leader Fellowship Endowment	02/17/00	100,000	100,000	224,352	0	0	3,873	(7,068)	221,156	0
Lexington Opera Society Chair in Opera Studies	12/15/04	750,000	755,845	1,679,083	0	0	33,197	(52,952)	1,659,328	0
Lexington Opera Society Community Endowment for Vocal Studies	05/11/04	50,000	50,000	112,856	0	0	1,965	(2,321)	112,500	0
Lexmark Graduate Fellowship Endowment	07/09/02	100,000	103,954	237,626	0	0	4,102	(7,487)	234,242	0
Library & Information Science Endowed Graduate Fellowship Fund	02/25/99	30,724	32,497	73,012	0	0	1,274	(1,734)	72,552	0
Linda C. Gill Chair in Nursing ³	01/20/98	1,000,000	0	1,068,315	0	0	18,444	(33,658)	1,053,100	0
Lion Apparel, Inc. Fellowship Endowment	09/26/00	50,000	50,000	111,469	0	0	1,924	(3,512)	109,881	0
Log-A-Load for Kids of Kentucky Fund	06/28/01	125,000	126,100	442,059	0	0	(152,848)	0	289,210	0
Log-a-Load for Kids of Kentucky Fund No. 2	05/15/06	125,000	125,000	336,595	0	0	5,955	0	342,550	0
Louise Harrison Shouse Endowed Graduate Fellowship Fund in Accountancy	12/12/05	175,000	175,000	366,568	0	0	7,247	(11,560)	362,255	0
Louise Harrison Shouse Endowed Research Fund in Opera Studies	12/12/05	75,000	75,000	159,154	0	0	(365)	(3,257)	155,532	0
Lucille Caudill Little Endowed Research Fund in Opera Studies	08/28/00	1,200,000	1,244,614	2,734,064	0	0	(28,871)	(55,794)	2,649,399	0
Lucille Caudill Little Fine Arts Library & Learning Center Endowment Fund	05/01/01	1,500,000	1,509,485	3,794,321	0	50	75,399	(93,586)	3,776,184	0
Lucille Caudill Little Performing Arts in Healthcare Program Fund	08/01/08	1,000,000	1,005,200	2,523,794	0	0	43,571	(79,513)	2,487,851	0
Lucille Caudill Little Professorship/Chair in Music Therapy	10/29/10	300,000	300,000	665,381	0	0	11,587	(13,685)	663,282	0
Lucille Caudill Little Research Endowment for Theatre	10/06/00	500,000	502,717	1,191,328	0	0	20,745	(24,502)	1,187,571	0
MacAdam-Abrahams Observatory Fund	08/14/06	500,000	521,000	1,232,392	0	500	11,188	0	1,244,080	0
Madeline F. James and Edith D. Gardner Chair in Cancer Research	10/10/02	492,086	492,086	1,171,805	0	0	18,535	0	1,190,340	0
Major Endowed Research Fund in Veterinary Science ²	12/09/98	1,825,881	10,000	2,092,311	0	0	36,135	(65,942)	2,062,503	0
Marcia A. Dake Professorship in Nursing ³	01/20/98	250,000	50,000	398,655	0	0	6,883	(12,560)	392,977	0
Margaret Dorrance Strawbridge Foundation Translational Cancer Research Endowment	07/21/06	2,000,000	2,000,000	4,354,289	0	0	(25,811)	0	4,328,478	0
Margaret Logan Colvin Chair in Lung Disease Research	05/02/98	663,900	669,152	1,483,700	0	0	25,615	(46,746)	1,462,569	0
Marie Rich Professorship in Arts and Sciences	12/22/06	50,000	50,000	130,176	0	0	2,302	0	132,478	0
Marion E. McKenna Professorship in Nursing Leadership	02/10/05	55,163	59,351	139,229	0	25	2,404	(4,387)	137,271	0
Mark and Ruth Luckens Graduate Fellowships in Toxicology	04/01/02	50,000	50,000	123,714	0	0	2,189	0	125,903	0
Mark Lee Gross M.D. Memorial Residency Fellowship in Ophthalmology	04/19/04	53,165	75,126	163,929	0	0	2,830	(5,165)	161,594	0
Markey Cancer Center Chair in Clinical Research	07/25/00	1,000,000	1,000,000	2,248,723	0	0	38,823	(70,848)	2,216,698	0

University of Kentucky
Endowment Match Program
Table 7: Components of Change in Endowment Market Value
During Fiscal Year 2014 - 2015

Endowment Name	Date Estab.	Prior to 07/01/14			During Fiscal Year 2014 - 2015				Outstanding Pledges as of 06/30/15	
		State Funds Received	Gifts Received	Market Value as of 07/01/14	State Funds Received	Gifts Received and Transfers	Investment Earnings (Loss)	Earnings Distributed ¹		Market Value as of 06/30/15
Markey Cancer Foundation Endowed Chair in Radiation Medicine	03/01/04	1,000,000	1,000,000	2,244,158	0	0	39,701	0	2,283,859	0
Martha Davis Fellowship Fund	05/08/06	200,000	200,625	429,544	0	0	7,599	0	437,143	0
Martin-Thacker Scholarships	07/31/98	100,397	100,398	243,982	0	0	4,212	(7,687)	240,507	0
Mary Byron Scholars Program	12/31/04	50,000	50,000	130,297	0	0	2,282	(1,035)	131,544	0
Mary Florence Jones Professorship in Neonatology	01/01/00	100,000	100,000	226,272	0	0	3,908	(7,131)	223,049	0
Mary Rebecca Johnson Whidby Endowed Professorship Fund	05/15/02	51,000	53,566	163,074	0	0	3,224	(5,143)	161,155	0
Max Steckler Fellowship Fund	11/19/04	1,749,284	1,753,166	4,022,325	0	0	69,443	(126,728)	3,965,041	0
McDowell Cancer Foundation Chair in the Lucille P. Markey Cancer Center	07/25/00	1,000,000	1,030,100	2,447,890	0	0	42,261	(77,123)	2,413,029	0
MCI WorldCom Graduate Fellowship	06/21/00	100,000	100,000	204,821	0	0	3,536	(6,453)	201,904	0
Medical Alumni Association Scholarship Endowment Fund	06/12/02	676,832	806,759	1,692,510	0	11,947	29,422	(53,467)	1,680,412	0
Merck Co., Inc. Pulmonary Medicine Professorship	02/08/99	100,000	100,000	218,779	0	0	3,777	(6,893)	215,663	0
Michael A. Davis Thoracic Oncology Research Professorship	10/18/11	100,000	100,000	259,358	0	0	4,588	0	263,946	0
Michael D. Rankin, M.D. Community Scholarship Endowment	09/10/08	450,000	458,272	1,177,810	0	0	(5,991)	0	1,171,819	0
Mining Engineering Foundation Graduate Fellowship Fund	05/26/99	1,000,000	1,013,655	2,189,521	0	200	37,805	(68,985)	2,158,542	0
Mitzi Strode Ovarian Cancer Research Endowment Fund	04/27/05	50,865	51,929	132,924	0	0	(1,803)	(4,177)	126,944	0
Myrle E. and Verle D. Nietzel Visiting Distinguished Faculty Endowment	11/22/04	50,000	62,994	135,440	0	0	2,338	(4,267)	133,511	0
Nadine James Alzheimer's Disease Research Fund	05/04/99	150,000	150,000	592,184	0	0	10,476	0	602,660	0
Neurology Research Chair	12/10/04	500,000	500,000	1,264,694	0	0	22,373	0	1,287,067	0
Neurology Research Professorship No.1	03/29/05	50,000	64,603	143,124	0	0	2,471	(4,509)	141,086	0
Neurology Research Professorship No.2	03/29/05	50,000	50,000	132,276	0	0	2,340	0	134,616	0
Newman Foundation Research Fund in Catholic Studies	09/06/06	500,000	502,750	1,347,972	0	1,000	23,869	0	1,372,841	0
Non-Tenured Faculty Research Enrichment Fund	01/28/99	150,000	150,000	366,888	0	0	6,492	0	373,380	0
Northern Kentucky UK Alumni Club Fellowship Fund	11/15/01	50,000	60,000	133,989	0	0	2,313	(4,221)	132,081	0
Otolaryngology Research Professorship Endowment	04/20/07	100,000	100,020	274,443	0	0	4,855	0	279,298	0
Palmer Engineering Civil Engineering Laboratory Endowment	11/04/02	50,000	50,000	122,305	0	0	2,112	(3,853)	120,563	0
Patient Quality, Safety and Rights Research Endowment	07/27/05	507,349	513,026	1,016,557	0	0	17,550	(32,027)	1,002,080	0
Patrick F. Hagihara, MD Professorship/Chair in General Surgery	05/01/90	252,500	325,903	708,110	0	1,417	12,281	(22,383)	699,424	0
Patrick P. DeLuca Pharmaceutical Technology Professorship in the College of Pharmacy	11/28/00	129,400	206,304	503,361	0	26,564	9,166	(16,282)	522,809	0
Patterson School of Diplomacy Fund for Excellence Graduate Intern Research Fellowship	01/26/99	74,300	86,875	233,657	0	0	4,035	(7,364)	230,328	0
Paul A. Kearney, M.D., Endowed Chair in Trauma Surgery	10/28/08	1,000,000	1,000,000	2,415,579	0	0	41,703	(76,105)	2,381,178	0
Paul A. Thornton Graduate Fellowship in Clinical Nutrition/Nutritional Sciences	08/28/00	350,000	356,600	752,190	0	525	13,001	(23,708)	742,008	0
Paul Ashton Ophthalmology Research Fund	12/22/08	75,894	75,895	228,582	0	0	4,044	0	232,626	0

University of Kentucky
Endowment Match Program
Table 7: Components of Change in Endowment Market Value
During Fiscal Year 2014 - 2015

Endowment Name	Date Estab.	Prior to 07/01/14			During Fiscal Year 2014 - 2015				Outstanding Pledges as of 06/30/15	
		State Funds Received	Gifts Received	Market Value as of 07/01/14	State Funds Received	Gifts Received and Transfers	Investment Earnings (Loss)	Earnings Distributed ¹		Market Value as of 06/30/15
Paul C. VanBooven Fellowship Endowment Fund	06/30/04	341,686	363,366	760,552	0	4,100	13,191	(24,000)	753,842	0
Paul E. Miller and Judith Sebastian Miller Fellowship Endowment Fund	04/29/05	114,837	114,837	247,784	0	0	4,278	(7,807)	244,255	0
Paul G. Blazer, Jr. Professorship in Stroke Research	08/24/98	250,000	273,532	664,039	0	0	4,286	(20,903)	647,423	0
Paul Mellon Endowed Graduate Student Support ²	04/04/00	0	1,750,000	2,094,637	0	0	36,175	(66,016)	2,064,796	0
Paul Mellon Equine Research Endowment ²	04/04/00	0	1,029,175	1,143,552	0	0	17,907	(36,041)	1,125,418	0
Paul Mellon Post Doctorial Fellowship ²	03/27/01	2,392,537	2,436	2,917,826	0	0	50,391	(91,959)	2,876,258	0
Paul Parker Endowment Fund for Residency Training and Research	12/27/01	54,820	80,639	198,159	0	250	3,426	(6,247)	195,588	0
Pediatric Exercise Physiology Laboratory Endowed Research Fund	05/13/05	225,000	238,580	520,766	0	0	8,991	(16,407)	513,349	0
Peter Pearlman Fellowship	11/10/00	50,000	81,168	138,590	0	125	2,394	(4,368)	136,742	0
Pharmaceutical Science Professorship and Research Endowment	12/21/06	50,000	50,000	113,862	0	0	1,965	(3,586)	112,241	0
Pharmacy Practice and Science Endowed Fund for Excellence	01/23/03	131,400	131,400	399,749	0	0	7,903	(12,606)	395,046	0
Physical Therapy Richard McDougall Alumni Professorship	01/22/07	67,133	67,133	149,632	0	0	2,582	(4,712)	147,503	0
Pin Oak Stud Endowed Research Fund ²	04/06/99	500,000	500,000	1,153,205	0	0	19,916	(36,345)	1,136,776	0
PJC Board of Trustees Engineering Professorship	10/23/00	50,000	50,000	106,012	0	0	1,875	0	107,888	0
President A.P.J. Abdul Kalam India Studies Endowment Fund	03/20/08	1,000,000	1,009,189	2,495,985	0	8,500	43,029	(78,660)	2,468,854	0
PricewaterhouseCoopers LLP Professorship in Accounting	06/29/00	150,000	555,415	714,214	0	0	12,331	(22,502)	704,042	0
Professorship for the Study of Complementary Healthcare	03/07/07	50,000	50,000	110,431	0	0	1,907	(3,479)	108,858	0
Professorship in Pediatric Otolaryngology Surgery	06/28/04	100,000	210,000	472,601	0	0	8,361	0	480,961	0
Professorship or Chair in Obstetrics and Gynecology	05/18/01	250,000	250,000	595,114	0	0	8,043	(18,744)	584,413	0
Professorship or Chair of Urologic Surgical Research	10/23/84	1,000,000	1,000,000	2,024,059	0	0	15,358	(47,935)	1,991,482	0
Psychiatry Endowed Professorship for the Addictions Fund	03/25/03	100,000	101,200	280,006	0	0	4,953	0	284,960	0
R. C. Durr Civil Engineering Fellowship Fund	11/21/97	300,000	300,000	699,780	0	0	12,085	(22,055)	689,810	0
R.C. Durr Chair in Alzheimer's Disease Research	07/10/03	500,000	500,000	1,401,502	0	0	(37,424)	(43,994)	1,320,084	0
Ralph E. & Norma L. Edwards Research Professorship	01/14/02	100,493	100,494	257,904	0	0	4,563	0	262,466	0
Randall G. Rowland, MD Endowment for Urologic Research	03/23/00	1,169,790	1,182,464	2,522,971	0	0	43,558	(79,488)	2,487,041	0
Rast-Holbrook Research and Seminar Fund	12/26/01	55,455	79,911	162,601	0	1,100	(6,216)	0	157,486	0
Raymond Civil Engineering Endowment Fund	09/08/98	2,000,000	2,000,000	4,584,801	0	0	38,709	(104,004)	4,519,506	0
Real Estate Professorship Endowment	01/20/98	166,300	169,233	616,377	0	0	10,907	0	627,284	0
Rebecca Cunningham Van Meter Endowment Fund	12/07/01	50,000	50,000	110,481	0	0	1,907	(3,481)	108,908	0
Reese S. Terry Professorship in Electrical Engineering	08/25/00	100,000	100,048	215,484	0	0	3,720	(6,789)	212,415	0
Regina Drury/Children's Miracle Network Chair in Pediatric Research	10/06/04	600,000	600,000	1,779,278	0	0	21,597	0	1,800,875	0
Research Fund for the Prevention of Alcohol and Drug Abuse	04/02/01	50,000	50,000	118,713	0	0	2,100	0	120,813	0
Rey M. Longyear Memorial Fund in Musicology	12/17/96	166,114	325,081	539,248	0	1,000	9,421	(11,108)	538,561	0
Richard C. Hayden, III, M.D. Chair in Otolaryngology	04/24/07	150,000	827,917	1,443,985	0	5,200	18,298	(45,695)	1,421,788	0

University of Kentucky
Endowment Match Program
Table 7: Components of Change in Endowment Market Value
During Fiscal Year 2014 - 2015

Endowment Name	Date Estab.	Prior to 07/01/14			During Fiscal Year 2014 - 2015				Market Value as of 06/30/15	Outstanding Pledges as of 06/30/15
		State Funds Received	Gifts Received	Market Value as of 07/01/14	State Funds Received	Gifts Received and Transfers	Investment Earnings (Loss)	Earnings Distributed ¹		
Richard G. Elliott, M.D. Professorship in Pediatrics	08/14/08	393,950	429,441	1,144,783	0	0	14,464	(36,053)	1,123,193	0
Richard K. Brautigam Professorship in Juvenile, Criminal and Social Justice	10/19/01	50,000	56,462	115,650	0	0	2,287	(3,647)	114,289	0
Richard W. Schwartz Commonwealth Professorship in Physician Leadership	01/19/01	250,000	250,000	543,929	0	0	9,622	0	553,552	0
Robert and Jeanne Nyere Professorship in Epilepsy Research	11/25/05	125,000	145,046	342,599	0	0	434	0	343,033	0
Robert E. Harding Jr. Professorship Fund	10/23/84	50,000	51,650	106,695	0	0	1,842	(3,362)	105,175	0
Robert E. McNiel Endowed Research Fund	03/05/02	50,000	51,554	116,730	0	0	2,015	(3,678)	115,067	0
Robert G. Lawson & William H. Fortune Professorships Endowment	12/31/02	85,680	96,380	208,676	0	1,250	3,635	(6,595)	206,966	0
Robert G. Lawson Professorship	12/29/98	57,000	107,050	180,584	0	0	3,118	(5,690)	178,013	0
Robert G. Luke, M.D. Research Chair of Nephrology	04/26/99	500,000	500,000	1,152,275	0	0	20,432	(36,325)	1,136,382	0
Robert H. & Anna B. Culton Professorship	12/18/02	50,000	50,400	146,460	0	0	2,580	(388)	148,652	0
Robert L. Bergen Professorship in Ophthalmology	10/23/84	200,000	200,000	464,640	0	0	8,022	(14,639)	458,023	0
Robert L. Johnson Scholarship Fund	05/19/00	250,000	302,091	587,178	0	2,600	10,210	(18,535)	581,453	0
Robert L. Lester Professorship in Biochemistry	10/18/00	52,000	72,000	139,792	0	0	2,764	(4,409)	138,147	0
Robert Lynn Leininger Endowed Professorship in Furniture Design	03/01/07	50,000	50,000	109,499	0	0	1,890	(3,450)	107,940	0
Robert M. Odear, '28, '30, Faculty Research Fund in Latin America	03/09/01	16,650	16,650	61,638	0	0	(1,380)	0	60,258	0
Robert P. & Mildred A. Moores Alzheimer's Disease Research	01/23/01	350,000	380,698	828,668	0	0	14,311	(26,117)	816,862	0
Robert Straus Professorship in Behavioral Science	04/19/00	50,000	51,150	139,040	0	0	1,911	0	140,950	0
Robert T. & Nyle Y. McCowan Chair in Alzheimer's Research	01/16/04	848,849	848,849	2,067,553	0	0	4,557	0	2,072,110	0
Rockcastle Hospital and Respiratory Care Center Fellowship	06/13/06	50,000	50,000	111,925	0	0	1,932	(3,526)	110,331	0
Ronald Allen Forester & Nancy Smoot Forester Endowed Professorship Fund	12/05/00	50,000	50,500	107,002	0	0	1,847	(3,371)	105,478	0
Ronald L. Akers Professorship in Criminology & Deviance Fund	06/07/00	100,000	100,000	244,530	0	0	4,222	(7,704)	241,047	0
Rose Carol Shumate Professorship in Cancer Research	12/24/06	42,500	42,500	104,673	0	0	1,850	0	106,523	0
Rosenthal Business & Economics Library Endowment	05/24/01	1,500,000	1,500,000	3,854,675	0	0	71,078	(91,932)	3,833,820	0
Royster Research Professorship	06/03/01	50,000	164,500	269,129	0	0	(448)	0	268,681	0
RPW Law Library Endowed Account	05/24/01	50,000	51,326	125,661	0	0	2,497	(3,099)	125,059	0
S. Lawrence and Elizabeth Ritchey Yost Lea Professorship in Plant and Soil Science	04/17/09	180,000	180,000	471,852	0	0	8,146	(14,866)	465,132	0
Saha Cardiovascular Research Center Fund	01/15/10	500,000	500,100	1,198,875	0	50,000	21,593	(38,567)	1,231,900	0
Sally and David B. Stevens, M.D. Scholarship	06/22/04	50,000	50,100	120,083	0	0	2,080	(3,794)	118,368	0
Sanders Brown Center on Aging Foundation Research Fund	02/01/07	52,500	100,595	217,263	0	1,000	3,871	0	222,134	0
Sanders-Brown Center on Aging Foundation Research Development Fund	08/30/00	1,000,000	1,172,004	2,680,879	0	3,247	53,014	(84,590)	2,652,550	0
Saylay/Garbulinska Fund for Rheumatology Fellows Res & Ed	10/30/08	200,000	200,000	572,368	0	0	10,125	0	582,494	0

University of Kentucky
Endowment Match Program
Table 7: Components of Change in Endowment Market Value
During Fiscal Year 2014 - 2015

Endowment Name	Date Estab.	Prior to 07/01/14			During Fiscal Year 2014 - 2015				Outstanding Pledges as of 06/30/15	
		State Funds Received	Gifts Received	Market Value as of 07/01/14	State Funds Received	Gifts Received and Transfers	Investment Earnings (Loss)	Earnings Distributed ¹		Market Value as of 06/30/15
Schutte Chair in Pharmaceutical Policy	12/18/06	1,000,000	1,000,325	2,342,613	0	0	41,442	0	2,384,056	0
Scott D. Breckenridge Professorship in Intelligence Education	05/10/04	102,415	103,500	239,312	0	0	4,731	(7,547)	236,497	0
Secat-J.G. Morris Aluminum Professorship	04/11/02	50,000	52,260	126,796	0	0	2,507	(3,999)	125,305	0
Spears Chair in Pharmacogenetics	05/10/11	200,000	443,000	809,047	0	0	14,313	0	823,360	0
Spinal Cord & Brain Injury Chair No. 2	04/09/00	500,000	500,000	1,162,800	0	0	20,571	0	1,183,371	0
Spinal Cord & Head Injury Chair No. 1	04/09/00	500,000	500,000	1,126,861	0	0	19,802	0	1,146,663	0
Spinal Cord and Brain Injury Chair No. 3	04/09/00	500,000	500,000	1,090,860	0	0	18,833	(34,369)	1,075,325	0
Spinal Cord and Brain Injury Chair No. 5	06/17/03	500,000	500,000	1,227,622	0	0	21,717	0	1,249,339	0
Stanley Smith Dickson Professorship	05/17/06	500,000	500,000	983,866	0	0	16,986	(30,998)	969,855	0
Stephen D. Quillen Memorial Fellowship Fund	07/10/06	60,000	60,000	117,571	0	0	2,067	(935)	118,703	0
Sites & Harbison Professorship of Law	06/23/97	72,500	104,600	209,366	0	0	3,615	(6,596)	206,384	0
Sue Fan Gooding Fund	10/18/96	80,115	80,115	172,288	0	0	2,975	(5,428)	169,835	0
Susan Abbott-Jamieson Dissertation Research Fund in Anthropology	09/03/01	50,000	55,600	118,123	0	500	(866)	0	117,757	0
Susan Ballard Lester Endowment	09/23/04	50,000	50,000	128,113	0	0	2,266	0	130,379	0
Sutherland Professorship of Landscape Design	03/08/04	250,000	250,000	543,187	0	0	10,739	(17,130)	536,796	0
Sweeney-Nelms Professorship in Alzheimer's Disease Research	12/05/05	60,000	65,000	188,892	0	2,000	3,376	0	194,269	0
Swift/Longacre/Scaife Fellowship in Classics	06/09/09	54,189	66,058	150,417	0	50	2,661	0	153,128	0
Sylvia Mansbach Endowed Chair in Alzheimer's Disease Research	04/02/01	500,000	531,464	1,106,409	0	0	19,102	(34,859)	1,090,652	0
Symptom Management & Palliative Care Professorship/Chair	04/14/04	120,875	125,371	260,148	0	0	4,602	0	264,751	0
T. Marshall Hahn, Jr. Graduate Fellowship Fund	04/29/99	50,000	50,000	114,776	0	0	(3,604)	0	111,172	0
T. Marshall Hahn, Jr. Professorship Fund in the College of Arts & Sciences	04/29/99	200,000	200,000	443,361	0	0	(2,585)	0	440,776	0
Teresa Garbulinska Music in HealthCare Fund	05/12/09	100,000	100,000	249,460	0	0	4,344	(5,131)	248,673	0
Thomas B. & Bettie T. Deen Graduate Fellowship	04/30/08	50,000	50,000	119,358	0	0	2,061	(3,760)	117,658	0
Thomas C. & Evelyn W. Finnie BS/MBA Graduate Fellowship Fund	04/27/99	520,316	631,591	1,333,319	0	10,000	22,945	(42,034)	1,324,231	0
Thomas C. Robinson Graduate Fellowship Endowment	09/08/05	60,456	60,456	175,090	0	0	3,097	0	178,188	0
Thomas D. Clark Professorship Fund	01/05/01	119,013	121,013	313,446	0	0	5,545	0	318,991	0
Thomas J. and Viva B. Timmons Graduate Fellowship Fund	08/17/06	320,000	444,487	805,204	0	0	13,901	(25,369)	793,736	0
Thomas P. Lewis Professorship	04/23/99	100,000	104,248	215,559	0	1,050	3,726	(6,801)	213,535	0
Toyota (Young) Library Endowment	05/24/01	1,000,000	1,000,000	2,546,260	0	0	50,597	(62,802)	2,534,055	0
Toyota-IR4TD Research Fund	01/31/07	1,000,000	1,000,000	1,977,915	0	0	40,120	(21,071)	1,996,964	0
Tracy Farmer Center for the Environment Endowment Fund	08/15/00	2,000,000	2,134,615	3,300,128	0	0	63,945	(34,382)	3,329,691	0
Trane Company Graduate Fellowship	10/21/02	75,000	75,000	177,981	0	0	3,073	(5,607)	175,446	0
Tri for Sight Eye Research Professorship	04/28/06	63,241	117,022	226,294	0	11,765	4,136	0	242,196	0
TVA Power Engineering Endowment Fund	04/16/99	1,000,000	1,000,000	2,160,415	0	0	3,265	(34,033)	2,129,647	0
Tyler Aaron Gill Professorship in Vascular Surgery ³	12/19/97	0	200,000	204,185	0	0	3,547	(4,840)	202,893	0

University of Kentucky
Endowment Match Program
Table 7: Components of Change in Endowment Market Value
During Fiscal Year 2014 - 2015

Endowment Name	Date Estab.	Prior to 07/01/14			During Fiscal Year 2014 - 2015					Outstanding Pledges as of 06/30/15
		State Funds Received	Gifts Received	Market Value as of 07/01/14	State Funds Received	Gifts Received and Transfers	Investment Earnings (Loss)	Earnings Distributed ¹	Market Value as of 06/30/15	
U.S. Surgical Endowed Professorship in Pharmacy Administration	04/06/99	100,000	100,000	212,778	0	0	3,674	(6,704)	209,748	0
UK College of Human Environmental Sciences Alumni Association Endowed Professorship	11/30/00	50,000	53,367	194,299	0	0	3,841	(6,127)	192,013	0
UK Nursery/Landscape Research Endowment	10/12/99	34,200	34,571	77,945	0	0	1,346	(2,456)	76,834	0
Ullin W. Leavell, MD Professorship in Dermatology	02/14/11	100,000	100,000	252,509	0	0	4,467	0	256,976	0
University of Kentucky Association of Emeriti Faculty Endowed Fellowship Fund	04/17/02	50,000	103,415	177,514	0	4,250	3,173	(5,699)	179,238	0
University of Kentucky Center for Research on Violence Against Women	10/03/03	132,536	139,580	349,257	0	5,000	4,595	(2,021)	356,831	0
University of Kentucky Margaret Ingels Society of Women Engineers Graduate Fellowship Fund	09/01/99	25,000	25,000	56,050	0	0	968	(1,766)	55,252	0
University of Kentucky Oral History Endowment Fund	03/29/04	679,740	700,922	1,585,150	0	18,915	31,712	(50,288)	1,585,490	0
University of Kentucky Woman's Club Fund	10/07/03	100,000	101,050	256,489	0	0	4,428	(8,081)	252,836	0
University Professorship in Allied Health	01/09/01	50,000	50,000	118,032	0	0	2,038	(3,719)	116,351	0
University Professorship in Dentistry	12/06/00	50,000	50,000	113,442	0	0	1,959	(3,574)	111,827	0
University Professorship in Graduate Medical Education	12/06/00	50,000	50,100	141,347	0	0	2,440	(4,453)	139,334	0
University Professorship in Medicine	12/09/00	50,000	50,000	114,264	0	0	1,973	(3,600)	112,637	0
University Professorship in Pharmacy	04/11/01	50,000	50,000	153,372	0	0	1,843	(4,314)	150,901	0
USEC Inc. Graduate Fellowship	09/27/02	50,000	50,000	120,267	0	0	2,076	(3,789)	118,554	0
Vaughn & Melton Graduate Fellowship in Civil Engineering	04/26/01	100,000	107,788	229,751	0	0	3,966	(7,238)	226,479	0
Verizon Communications Graduate Fellowship	12/15/99	900,000	900,000	1,998,587	0	0	35,583	(63,662)	1,970,508	0
Verizon Wireless Chair on Studies on Violence Against Women	12/31/04	500,000	500,000	1,060,546	0	0	18,683	(2,811)	1,076,418	0
Vernon R. Wiehe Endowed Professorship in Family Violence	05/16/00	50,000	50,445	122,052	0	0	2,413	(3,849)	120,616	0
Violet Irene Eads Research Fund for Eye Tissue in the Lions Eye Bank of Lexington	11/08/01	56,000	61,574	175,869	0	0	3,111	0	178,980	0
Virginia T. Barrow Chair in Brain Disease Research	10/27/06	1,191,972	1,196,370	2,832,448	0	1,000	(101,132)	(88,861)	2,643,455	0
Von Allmen School of Accountancy Fellowship	04/29/00	1,000,000	1,000,315	2,084,599	0	0	35,990	(65,677)	2,054,911	0
Von Allmen School of Accountancy Research Support	04/29/00	2,000,000	2,000,180	4,135,044	0	0	71,389	(130,279)	4,076,155	0
W. Hugh Peal Collection	08/14/86	200,000	226,000	631,790	0	0	11,180	0	642,970	0
W. T. Young STM Library Endowment Fund	03/08/01	12,998,356	12,998,356	33,375,912	0	0	663,213	(823,197)	33,215,928	0
W.T. Young Library Endowment Fund	03/07/00	5,770,332	5,983,465	14,938,301	0	0	296,839	(368,444)	14,866,695	0
Wallace Charles Hill Graduate Fellowship in Administration and Supervision	05/18/99	50,000	50,000	107,755	0	0	1,860	(3,395)	106,220	0
Wallace Charles Hill Professorship in Rehabilitation Counseling	05/18/99	50,000	50,000	113,381	0	0	1,957	(3,572)	111,766	0
Wendell H. Ford Endowed Professorship	03/07/00	590,410	596,127	1,484,696	0	0	2,244	(23,388)	1,463,551	0
Werner F. S. Schmitt Professorship in Aging and Neurobehavior	11/30/05	146,485	216,756	492,177	0	3,600	8,772	0	504,549	0
Whalen Graduate Fellowship Fund	08/15/00	500,000	500,320	1,047,436	0	0	18,083	(33,001)	1,032,519	0
Wilbur E. Chellgren Professorship in Accounting	06/02/00	125,000	125,000	256,439	0	0	4,427	(8,079)	252,787	0
William A. Marquard Chair in Cancer Research	11/29/04	750,000	771,393	1,651,962	0	0	29,220	0	1,681,183	0
William Baxter Jennings Fellowship Endowment Fund	06/01/04	64,225	79,228	156,363	0	2,962	2,733	(4,960)	157,098	0

University of Kentucky
Endowment Match Program
Table 7: Components of Change in Endowment Market Value
During Fiscal Year 2014 - 2015

Endowment Name	Date Estab.	Prior to 07/01/14			During Fiscal Year 2014 - 2015				Outstanding Pledges as of 06/30/15	
		State Funds Received	Gifts Received	Market Value as of 07/01/14	State Funds Received	Gifts Received and Transfers	Investment Earnings (Loss)	Earnings Distributed ¹		Market Value as of 06/30/15
William H. Otis and Marquita Sivis Otis Professorship in Gerontology and Intergenerational Social Work	03/14/07	50,000	54,350	135,783	0	0	2,402	0	138,185	0
William H. Ray Professorship	04/27/07	47,655	47,655	91,337	0	0	1,576	(2,876)	90,037	0
William J. Tuggle & Nina B. Tuggle Professorship in English	03/06/97	300,000	300,000	742,886	0	0	13,142	0	756,028	0
William R. Markesbery, MD Chair in Neurotrauma Research	04/09/00	500,000	500,000	1,054,905	0	0	18,212	(33,236)	1,039,882	0
William Robert Mills Chair in Equine Infectious Diseases ²	12/09/98	0	3,355,208	4,357,973	0	0	75,265	(137,350)	4,295,887	0
William Stamps Farish Fund Chair in Cancer Research	09/01/04	1,000,000	1,000,000	2,432,629	0	0	41,998	(76,642)	2,397,985	0
William Stamps Farish Fund Chair in Plastic Surgery	02/16/05	1,000,000	1,000,000	2,115,792	0	0	36,528	(66,660)	2,085,660	0
William T. Bryan Endowed Chair in History	12/08/98	500,000	508,848	1,187,343	0	0	9,686	0	1,197,029	0
William T. Bryan Endowed Chair in Public Finance in the Martin School	12/08/98	500,000	508,848	1,180,668	0	0	20,390	(37,211)	1,163,848	0
William T. Bryan Endowed Chair in Public Finance in the Martin School	11/08/05	125,000	125,000	283,391	0	0	4,894	(8,932)	279,354	0
William T. Bryan Endowed Chair in Spanish	12/08/98	500,000	508,848	1,197,394	0	0	(4,010)	0	1,193,384	0
William T. Bryan Endowed Chair in Special Education	12/08/98	500,000	508,848	1,180,668	0	0	20,390	(37,211)	1,163,848	0
William T. Bryan Endowed Chair in Vocal Music	12/08/98	500,000	508,848	1,180,668	0	0	20,390	(37,211)	1,163,848	0
William T. Bryan Endowed Professorship in Materials Engineering	12/08/98	125,000	125,000	283,391	0	0	4,894	(8,932)	279,354	0
William T. Bryan Library Endowment Fund	08/24/00	750,000	770,220	1,946,280	0	0	38,675	(48,004)	1,936,951	0
William T. Bryan University Chair	12/08/98	500,000	508,848	1,304,403	0	0	22,528	(41,111)	1,285,820	0
William T. Young Endowed Chair	04/12/02	500,000	500,000	1,251,353	0	0	21,604	(39,425)	1,233,532	0
William T. Young Library Endowment for Markey Cancer Center	05/24/01	1,500,000	1,500,000	3,839,701	0	0	76,299	(94,704)	3,821,295	0
William T. Young Library Endowment for Saunders Brown Center on Aging	05/24/01	1,000,000	1,000,000	2,456,021	0	0	48,804	(60,577)	2,444,248	0
Women's Circle Endowment	07/31/06	503,718	504,343	1,051,691	0	0	18,650	(13,967)	1,056,374	0
Wyatt, Tarrant & Combs Professorship of Law II	04/01/99	60,000	60,000	125,639	0	0	2,169	(3,958)	123,850	0
Zantker Charitable Foundation Professorship in Judaic Studies	11/08/00	473,350	490,550	1,163,999	0	0	(4,042)	(9,250)	1,150,708	0
Zantker Foundation Professorship in Jewish History	10/20/05	250,000	250,000	643,942	0	0	(33,798)	0	610,144	0
Zimmer Endowment for Orthopaedic Research	03/21/01	300,000	300,000	736,707	0	0	(50,675)	(23,047)	662,984	0
Existing RCTF Funded Endowments Sub-Total		\$213,597,359	\$230,634,721	\$523,648,483	\$0	\$1,194,112	\$7,186,869	(\$12,125,245)	\$519,904,219	\$0
Grand Total		\$213,597,359	\$230,634,721	\$523,648,483	\$0	\$1,194,112	\$7,186,869	(\$12,125,245)	\$519,904,219	\$0

Notes to Table 7:

¹ Net of reinvestment of prior year spending distributions.

² State funds and matching gifts recorded in different funds. See attached Footnote 2 schedule.

³ State funds and matching gifts recorded in different funds. See attached Footnote 3 schedule.

Note 2: The following table is a summary of all activity in the accounts related to the Schlaikjer gifts and pledges to clearly identify state and gift funds received.

Endowment Name	Date Estab.	Prior to 07/01/14			During Fiscal Year 2014 - 2015					Outstanding Pledges as of 06/30/15
		State Funds Received	Gifts Received	Market Value as of 07/01/14	State Funds Received	Gifts Received and Transfers	Investment Earnings (Loss)	Earnings Distributed ¹	Market Value as of 06/30/15	
Albert G. Clay Endowed Chair in Equine Reproduction	12/09/98	\$3,250,000	\$24,225	\$4,516,061	\$0	\$0	\$79,892	\$0	\$4,595,953	\$0
Jes & Clementine Schlaikjer Professorship - I	06/11/02	0	256,515	308,921	0	0	5,333	(9,733)	304,522	0
Jes & Clementine Schlaikjer Professorship - II	06/11/02	0	253,538	308,459	0	0	5,325	(9,718)	304,066	0
Jes E. and Clementine Mills Schlaikjer Chair in Equine Infectious Diseases	12/09/98	0	3,467,208	4,898,669	0	0	(80,207)	(103,558)	4,714,903	0
John A. Morris Library Endowed Research and Mission Support Fund	12/09/98	1,000,000	0	1,136,245	0	0	19,623	(35,810)	1,120,058	0
John S. & Elizabeth A. Knight Chair Endowment Supplement	12/09/98	1,716,000	249,657	2,409,719	0	0	41,779	(69,703)	2,381,796	0
Major Endowed Research Fund in Veterinary Science	12/09/98	1,825,881	10,000	2,092,311	0	0	36,135	(65,942)	2,062,503	0
Paul Mellon Endowed Graduate Student Support	04/04/00	0	1,750,000	2,094,637	0	0	36,175	(66,016)	2,064,796	0
Paul Mellon Equine Research Endowment	04/04/00	0	1,029,175	1,143,552	0	0	17,907	(36,041)	1,125,418	0
Paul Mellon Post Doctorial Fellowship	03/27/01	2,392,537	2,436	2,917,826	0	0	50,391	(91,959)	2,876,258	0
Pin Oak Stud Endowed Research Fund	04/06/99	500,000	500,000	1,153,205	0	0	19,916	(36,345)	1,136,776	0
William Robert Mills Chair in Equine Infectious Diseases	12/09/98	0	3,355,208	4,357,973	0	0	75,265	(137,350)	4,295,887	0
Total		\$10,684,418	\$10,897,962	\$27,337,577	\$0	\$0	\$307,535	(\$662,176)	\$26,982,936	\$0

24

Note 3: The following table is a summary of all activity in the accounts related to the Gill gifts and pledges to clearly identify state and gift funds received.

Endowment Name	Date Estab.	Prior to 07/01/14			During Fiscal Year 2014 - 2015					Outstanding Pledges as of 06/30/15
		State Funds Received	Gifts Received	Market Value as of 07/01/14	State Funds Received	Gifts Received and Transfers	Investment Earnings (Loss)	Earnings Distributed ¹	Market Value as of 06/30/15	
Alvin L. Morris Professorship in Oral Health Research	01/20/98	\$200,000	\$200	\$213,469	\$0	\$0	\$3,685	(\$6,726)	\$210,428	\$0
Gill Foundation Chair in Preventive Cardiology	01/20/98	0	1,000,000	1,106,485	0	0	19,575	0	1,126,059	0
Gill Foundation Professorship in Interventional Cardiology	12/19/97	0	200,225	202,784	0	0	3,501	-6,389	199,896	0
Gill Heart Institute Endowment	12/26/02	0	1,168,759	1,444,850	0	0	25,560	0	1,470,411	0
Harry B. Kostenbauder Professorship in Pharmacy	04/24/02	200,000	34,825	271,195	0	250	4,684	-8,546	267,583	0
Jack M. Gill Chair in Internal Medicine	01/20/98	1,000,000	0	1,094,046	0	0	18,888	-34,469	1,078,465	0
Jacqueline A. Noonan - CMN Research Chair in Pediatrics	12/08/08	1,000,000	1,002,276	2,199,365	0	0	38,908	0	2,238,273	0
Jason Alexander Gill Professorship in Cardiothoracic Surgery	12/19/97	0	200,000	237,957	0	0	4,108	-7,497	234,568	0
Jefferson Morris Gill, Ph.D. Professorship in Cardiology	12/19/97	0	200,000	234,266	0	0	4,044	-7,381	230,930	0
Jennifer Gill Roberts Professorship in Pediatric Cardiology	12/19/97	0	200,000	231,910	0	0	4,004	-7,307	228,607	0
Joseph Hamburg Professorship in Rehabilitation Sciences	01/20/98	200,000	0	219,121	0	0	3,783	-6,904	216,001	0
Linda C. Gill Chair in Nursing	01/20/98	1,000,000	0	1,068,315	0	0	18,444	-33,658	1,053,100	0
Marcia A. Dake Professorship in Nursing	01/20/98	250,000	50,000	398,655	0	0	6,883	-12,560	392,977	0
Tyler Aaron Gill Professorship in Vascular Surgery	12/19/97	0	200,000	204,185	0	0	3,547	-4,840	202,893	0
Total		\$3,850,000	\$4,256,285	\$9,126,602	\$0	\$250	\$159,614	(\$136,276)	\$9,150,191	\$0



University Budget Office
University of Kentucky
107 Main Building
Lexington, KY 40506-0032

859-257-1841
www.uky.edu/OPBPA/

December 2015

UK
UNIVERSITY OF
KENTUCKY[®]

www.uky.edu
An Equal Opportunity University