

FCR 16

Office of the President
June 13, 2025

Members, Board of Trustees:

IMPROVE PARKING/TRANSPORTATION SYSTEMS – UK HEALTHCARE
(CHANDLER EXPANSION PARKING STRUCTURE) CAPITAL PROJECT

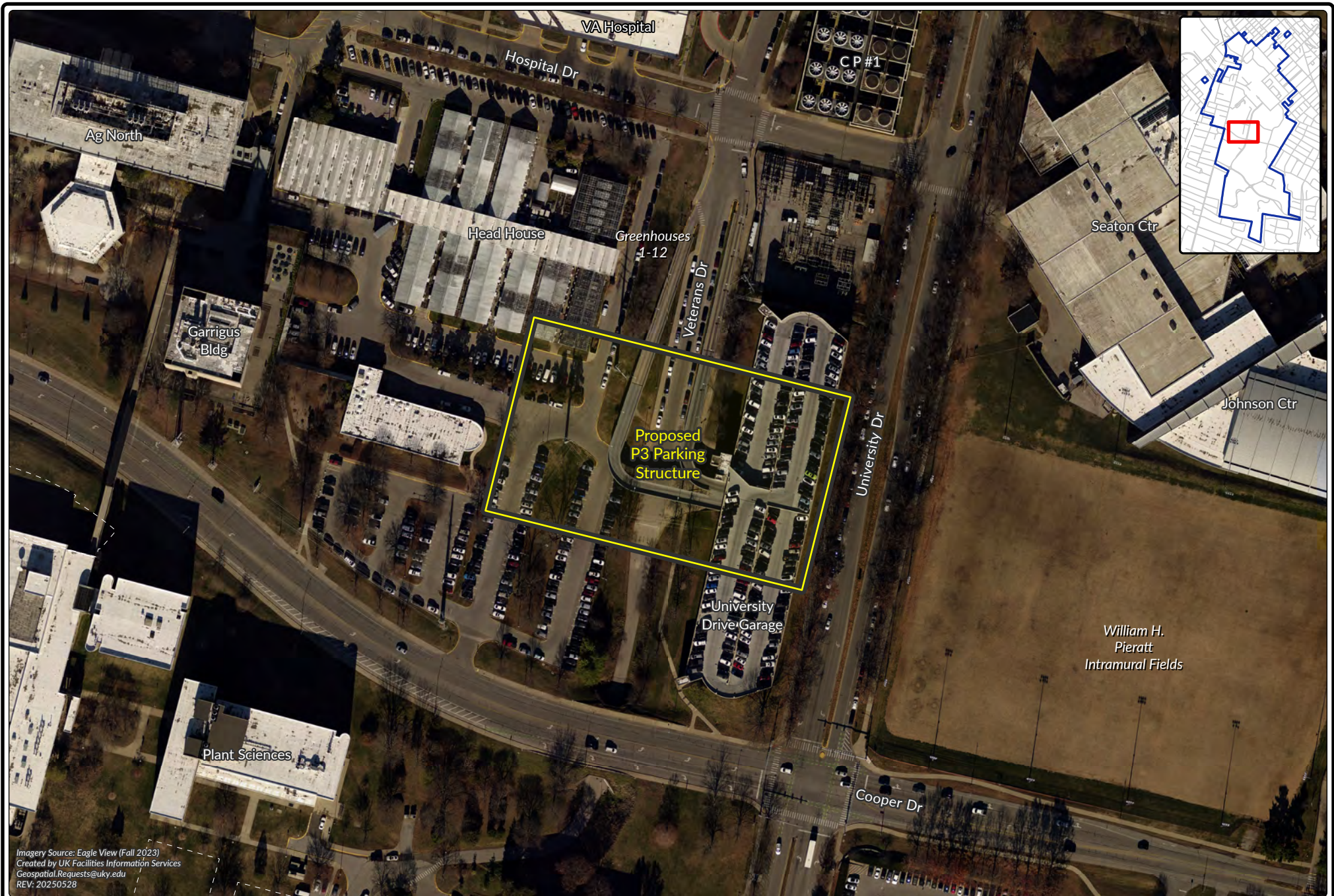
Recommendation: that the Board of Trustees approve the initiation of the Improve Parking /Transportation Systems – UK HealthCare (Chandler Expansion Parking Structure) capital project and authorize the Executive Vice President for Finance and Administration to negotiate and execute all documents necessary to create a viable Public-Private-Partnership (P3).

Background: Pursuant to Administrative Regulation 8:2, any capital project with an estimated scope of \$1,000,000 or more must be approved by the Board prior to initiation.

With the Chandler Expansion there is a significant need to increase parking capacity to accommodate increased patient and visitor demands. This parking structure is planned to accommodate approximately 2,400 vehicles with direct access to the new Chandler Expansion Patient Care Facility for patients and visitors. Entrance to the new facility will be off Cooper Drive, with secondary access planned for University Drive. The new structure will be designed to complement the design of the Chandler Expansion facility and provide ample graphics and ticketing automation for ease of use by our patients and visitors.

This project, authorized by the 2024 Kentucky General Assembly, is anticipated to cost up to \$140,000,000, well within the authority of \$200,000,000, and will be funded with third-party financing as a Public-Private Partnership pursuant to KRS Chapter 45A.

Action taken: ☒ Approved ☐ Disapproved ☐ Other _____



Imagery Source: Eagle View (Fall 2023)
Created by UK Facilities Information Services
Geospatial.Requests@uky.edu
REV: 20250528

