

# FCR 8

Office of the President  
December 13, 2022

Members, Board of Trustees:

APPROVAL OF GROUND LEASE  
(UNITED STATES OF AMERICA, UNITED STATES DEPARTMENT OF  
AGRICULTURE, AGRICULTURAL RESEARCH SERVICE)

Recommendation: that the Board of Trustees authorize the Executive Vice President for Finance and Administration to negotiate and execute a ground lease between the University of Kentucky, as Lessor, and the United States of America, United States Department of Agriculture (USDA), Agricultural Research Service (ARS) as Lessee, for up to 3.63 acres of land located on the University of Kentucky, Lexington campus and up to 2.2 acres of land located on the C. Oran Little Research Center farm (LRC) in Woodford County, Kentucky.

Background: USDA-ARS has a single unit in Lexington, Kentucky, the Forage-Animal Production Research Unit (FAPRU). The mission of FAPRU is to improve the sustainability and profitability of forage-based livestock enterprises in the transition zone between the temperate Northeast and the subtropical South. FAPRU was initiated in 2003 with the goal of forming a partnership between USDA-ARS and the University of Kentucky (UK), College of Agriculture, Food and Environment (CAFE) to bring cutting-edge science to forage-animal production.

Congress directed the construction of the Forage-Animal Production Laboratory (FAPL) on the University of Kentucky campus in Lexington with \$65.9 million included in the FY 2020 federal budget. The funding will plan, design and construct the ARS FAPL research facilities to house both USDA-ARS and UK CAFE researchers. The 3.63 acres of land located on campus will be the location used to construct, as currently planned, a 39,000 square foot lab and office research building with a 7,000 square foot headhouse. Greenhouses will be included if budget is available. The 2.2 acres located at the LRC in Woodford County will be the location used to construct, as currently planned, a 5,127 square foot laboratory and office building with potential additional animal research pens, necropsy and feed storage.

---

Action taken:     Approved     Disapproved     Other \_\_\_\_\_



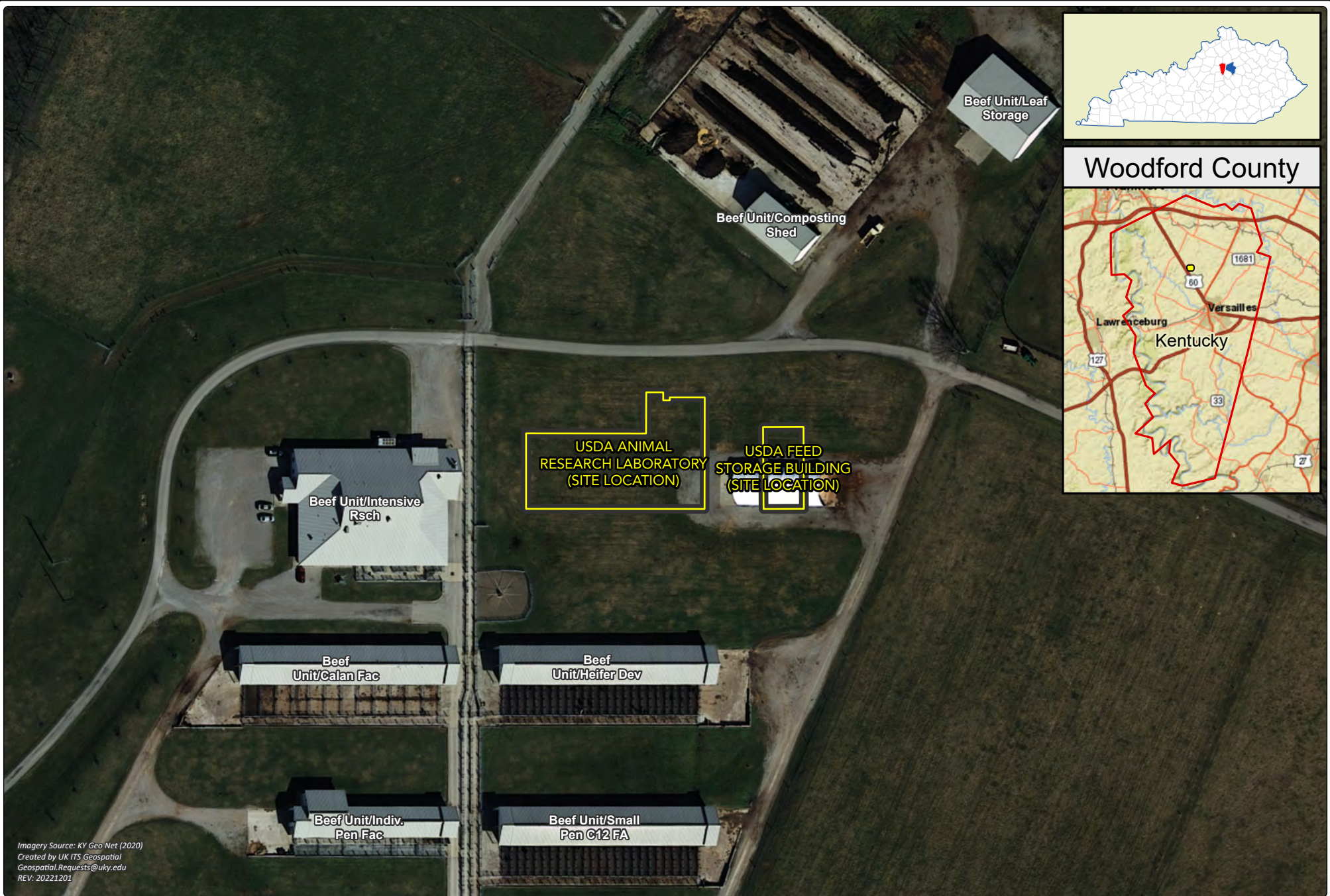
USDA ANIMAL  
PRODUCTION LABORATORY  
(SITE LOCATION)

Imagery Source: Pictometry (Spring 2022)  
Created by UK ITS Geospatial  
Geospatial.Requests@uky.edu  
REV: 20221205



# FCR 8 - APPROVAL OF GROUND LEASE (USDA, AGRICULTURAL RESEARCH SERVICE)

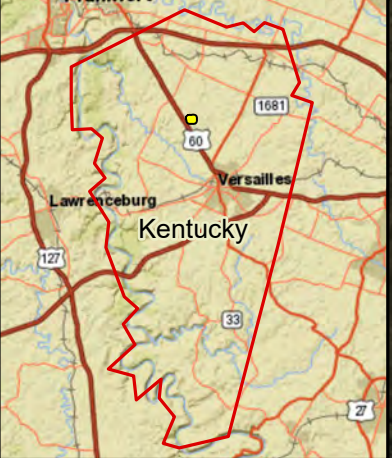




Imagery Source: KY Geo Net (2020)  
Created by UK ITS Geospatial  
Geospatial.Requests@uky.edu  
REV: 20221201



Woodford County



### FCR 8 - APPROVAL OF GROUND LEASE (USDA, AGRICULTURAL RESEARCH SERVICE)

