

FCR 9

Office of the President
December 13, 2022

Members, Board of Trustees:

REPLACE PRINCETON ANCILLARY BUILDINGS
EMERGENCY CAPITAL PROJECT

Recommendation: that the Board of Trustees approve the initiation of the Replace Princeton Ancillary Buildings as an emergency capital project.

Background: Pursuant to Administrative Regulation 8:2, any capital project with an estimated scope of \$1,000,000 or more must be approved by the Board prior to initiation.

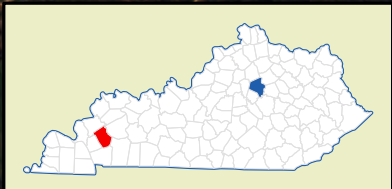
On December 10, 2021, the Princeton Research Farm (UKREC) received a direct hit from an EF 4 tornado with sustained winds of an estimated 190 miles per hour. The devastation included the destruction of most of the research facilities including several ancillary buildings and several small houses used for visiting staff, a farm shop and a field processing building.

The project consolidates operations and services into three new buildings which will include a residence hall, farm shop, and a field processing building. The residence hall will be approximately 4,700 square feet. The farm shop will be approximately 7,700 square feet and will provide a workspace for the maintenance and repair of fleet vehicles, farm machinery and research equipment. The field processing building will be approximately 18,300 square feet and will provide a workspace for processing field samples and storage of research equipment, fertilizer and seed.

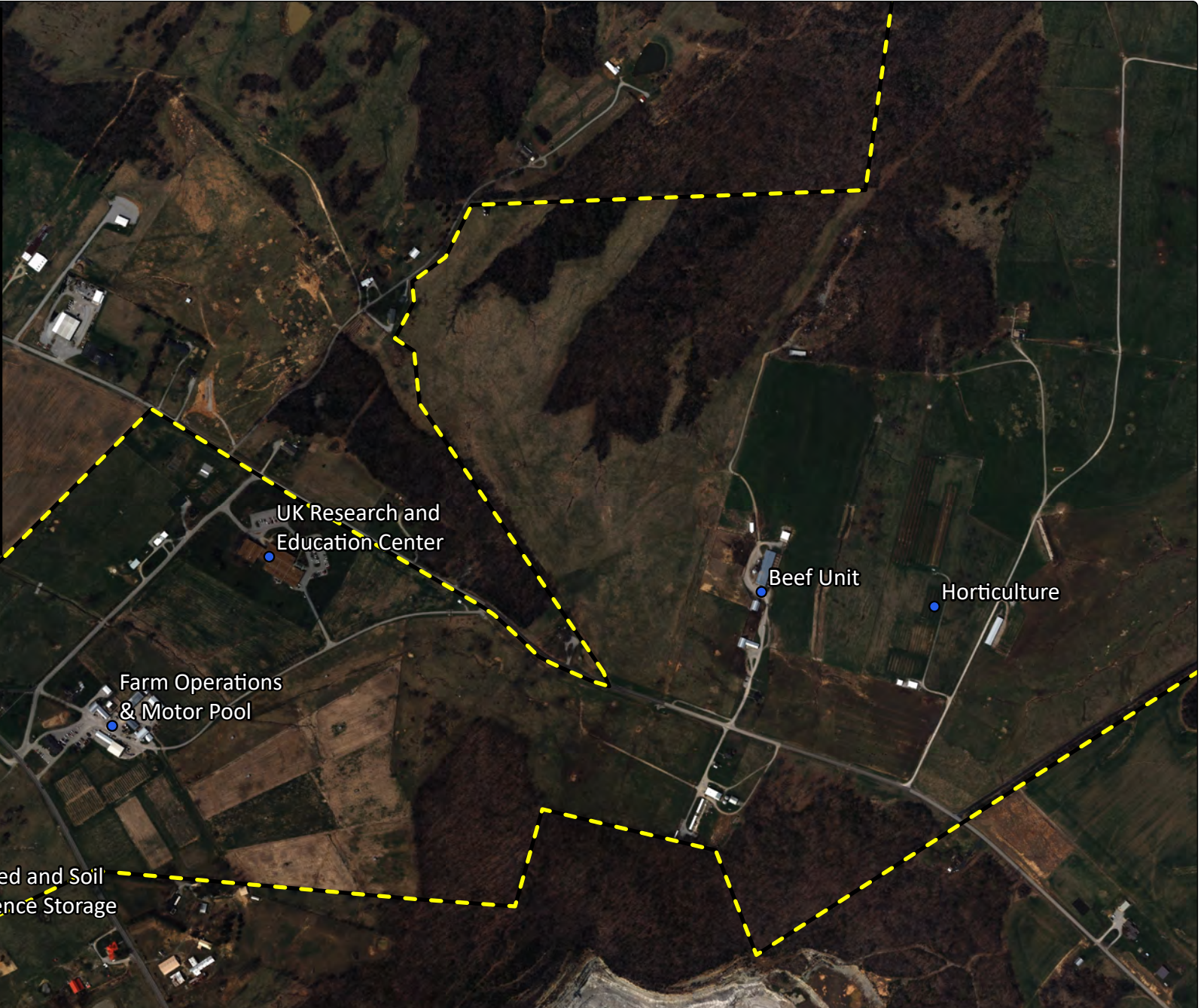
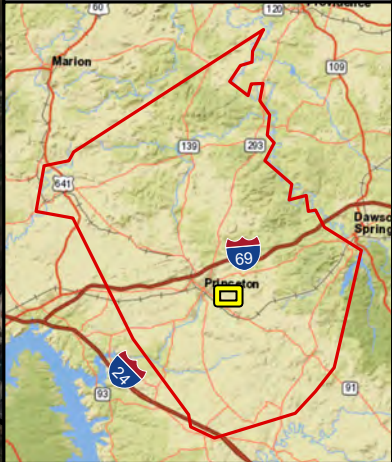
Pursuant to KRS §45.750(1)(g), this project qualifies as an Emergency Repair, Maintenance or Replacement Project as it is necessitated by damage resulting from a disaster. Contingent upon approval by the Board, the emergency capital project will be reported to the Capital Projects and Bond Oversight Committee.

This \$10,000,000 project is authorized by emergency authority and will be funded with insurance reimbursement proceeds.

Action taken: Approved Disapproved Other _____



Caldwell County



Imagery Source: KY Geo Net (2021)
Created by UK ITS Geospatial
Geospatial.Requests@uky.edu
REV: 20221202



FCR 9 - REPLACE PRINCETON ANCILLARY BUILDINGS EMERGENCY CAPITAL PROJECT

