

# FCR 9

Office of the President  
September 9, 2016

Members, Board of Trustees:

## UPGRADE/RENOVATE/EXPAND GRAIN CENTER OF EXCELLENCE CAPITAL PROJECT

Recommendation: that the Board of Trustees approve the initiation of the Upgrade/Renovate/Expand Grain Center of Excellence Capital Project.

Background: Pursuant to Administrative Regulation 8:2, any capital project with an estimated cost of \$600,000 or more must be approved by the Board prior to initiation. This Project will renovate and expand the UK Research and Education Center at Princeton, KY for the new Grain Center of Excellence. The new Grain Center of Excellence will allow the University to conduct research on intensive agricultural production practices, study water quality issues, and help define the environmental footprint of intensive agriculture. This ultimately will benefit Kentucky producers by providing new applications and technologies resulting in increased yields, reduced inputs, and higher economic returns.

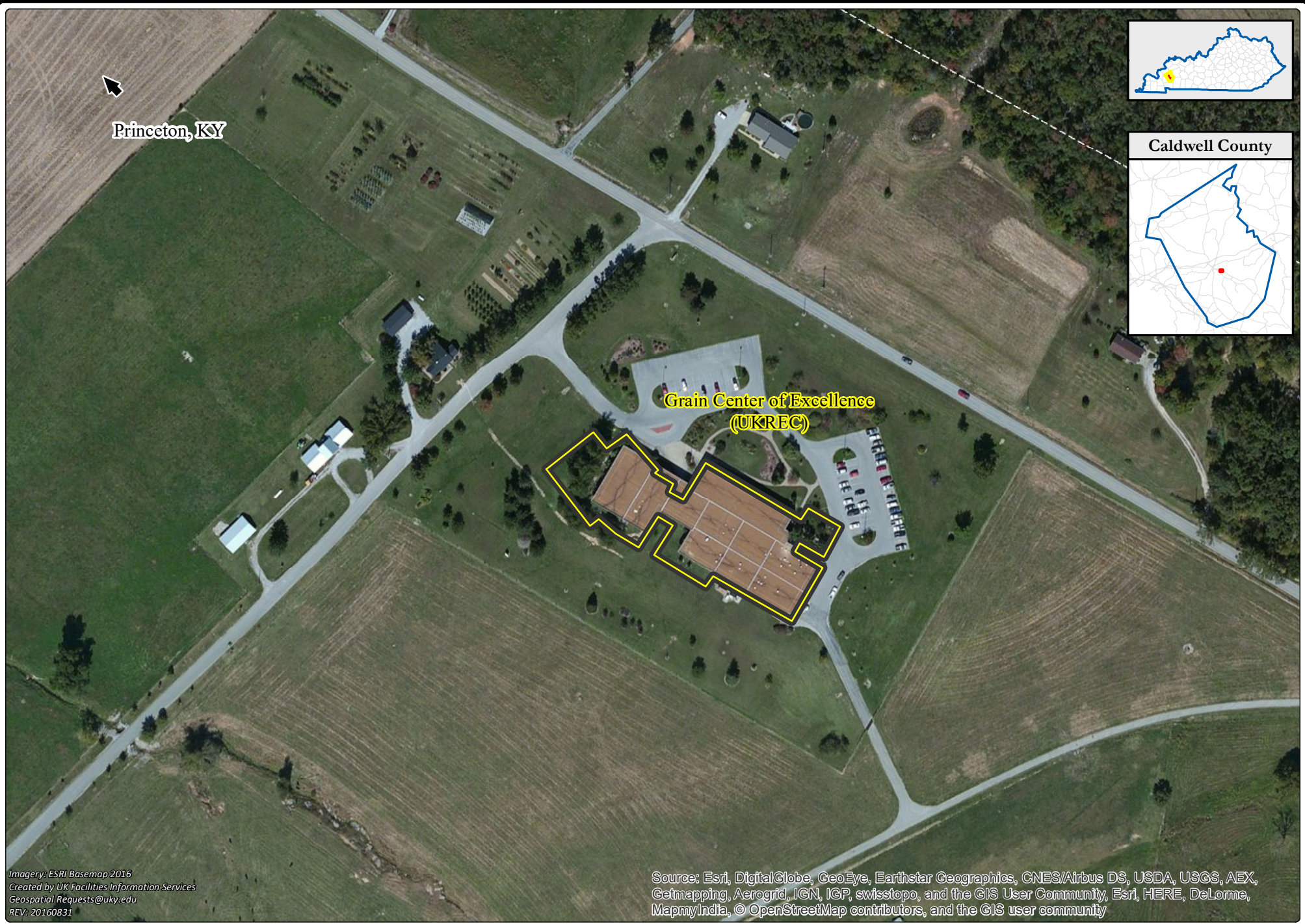
The existing facility will be expanded by an additional 20,000 square feet and will include a two-story, dividable multi-purpose space with large equipment access. Renovations to the existing facility will cover approximately 20,000 square feet and are needed to tie the current facility into the expansion and ensure that the renovated and expanded facility meets modern safety and energy efficiency standards. This project includes upgrades and replacement of floor tiles, windows, ceiling tiles and grids, entrances, lighting, HVAC system, fume hoods, fire alarm, and roof. When complete, the new Grain Center of Excellence will include a large multi-purpose space, seed storage and handling room, seed/plant drying room, seed cold storage room, grinding room, research laboratories, general storage rooms, updated offices, food preparation rooms, conference room, smart classrooms, office administration areas, and restrooms with showers.

The scope of the project is \$15,000,000. The 2016 Session of the Kentucky General Assembly provided a special appropriation to the Agricultural Development Fund for agricultural development initiatives. The Agricultural Development Board, which oversees investment of the Kentucky Agricultural Development Fund, awarded \$15,000,000 of the special appropriation to the University for the project. The project was authorized by the 2016 Session of the Kentucky General Funds as part of the Upgrade/Renovate/Expand Research Labs pool project which has a total authorization of up to \$33,500,000.

---

Action taken:      Approved      Disapproved      Other \_\_\_\_\_





Imagery: ESRI Basemap 2016  
Created by UK Facilities Information Services  
Geospatial.Requests@uky.edu  
REV: 20160831

Source: Esri, DigitalGlobe, GeoEye, Earthstar Geographics, CNES/Airbus DS, USDA, USGS, AEX, Getmapping, Aerogrid, IGN, IGP, swisstopo, and the GIS User Community, Esri, HERE, DeLorme, MapmyIndia, © OpenStreetMap contributors, and the GIS user community

UNIVERSITY OF  
**KENTUCKY**

**FCR 9 - UPGRADE/RENOVATE/EXPAND GRAIN CENTER OF EXCELLENCE  
CAPITAL PROJECT**

