

UK CORE SUMMIT

September 11, 2013



UK
UNIVERSITY OF
KENTUCKY®

AGENDA

- ▶ State of the Core
- ▶ Assessment Update
- ▶ Financial Model and UK Core
- ▶ Ensuring Quality of the Core

AGENDA

- ▶ **State of the Core**
- ▶ Assessment Update
- ▶ Financial Model and UK Core
- ▶ Ensuring Quality of the Core

STATE OF THE CORE

UK CORE EDUCATION COMMITTEE

Faculty Member	UK Core Area	Department
Jonathan Allison	Humanities	English
Ruth Beattie	Natural/Math/Physical Sciences	Biology
Russell Brown	Quantitative Foundations	Mathematics
Heather Bush	Statistical Inferential Reasoning	Biostatistics
Tracy Campbell	U.S. Citizenship	History
Patty Cook-Craig	Social Sciences	Social Work
Amy Gaffney	Composition & Communication	Communication
Nancy Jones	Arts & Creativity	Theatre
Juliana McDonald	Global Dynamics	Anthropology
Brian McNely	Composition & Communication	WRD

STATE OF THE CORE SINCE LAST TIME WE MET...

- ▶ UKCEC Senate Rules approved
- ▶ Equivalencies/Transfer credit
- ▶ SACS feedback
- ▶ New courses approved
- ▶ Enrollment monitoring/modeling

STATE OF THE CORE

SENATE RULES UPDATE - UKCEC

- ▶ It shall maintain long-term oversight of the program, including periodic course review and program assessment
- ▶ It shall continue to work to enhance the program and assert the program's centrality to the undergraduate curriculum

STATE OF THE CORE EQUIVALENCIES/TRANSFER CREDIT

- ▶ International course credit
- ▶ UK Core Exceptions Subcommittee

STATE OF THE CORE SACS FEEDBACK

- ▶ Concern with course restrictions and minimalist hour requirement
 - ▶ “No intent...to circumvent the gen ed requirements”
 - ▶ “Strongly suggests that the institution explore the possibility of excluding courses that are restricted”

STATE OF THE CORE

SACS FEEDBACK

- ▶ Assessing college-level competencies
 - ▶ “Evident that the institution has spent almost ten years developing the new Core and useful assessment strategies and instruments.”
 - ▶ “...the On-Site Reaffirmation Committee is satisfied that the institution is moving in the right direction with its plans to assess the new Core.”

STATE OF THE CORE COURSE APPROVALS

UK Core Area	# of courses approved	# taught F13
Intellectual Inquiry – Arts & Creativity	30	24
Intellectual Inquiry – Humanities	56	33
Intellectual Inquiry – Natural/Physical/Math Sciences	26	20
Intellectual Inquiry – Social Sciences	20	18
Composition & Communication I	2	2
Composition & Communication II	4	4
Quantitative Foundations	8	6
Statistical Inferential Reasoning	7	6
Community, Culture and Citizenship in the USA	29	26
Global Dynamics	54	28
Total	236	167

STATE OF THE CORE COURSE APPROVALS

College	Inquiry	C&C	Quantitative Reasoning	Citizenship	Total
Agriculture	7	0	1	5	13
Arts & Sciences	74	3	13	65	155
Communication & Information	4	3	0	3	10
Design	4	0	0	1	5
Education	2	0	0	1	3
Engineering	6	0	0	1	7
Fine Arts	30	0	0	6	36
Gatton College	1	0	0	0	1
Public Health	4	0	1	1	6
Total	132	6	15	83	236

STATE OF THE CORE

BY THE NUMBERS - ENROLLMENT

	AY2012		AY2013	
Agriculture	950	1.7%	1319	2.2%
Arts and Sciences	43797	77.5%	44355	73.7%
Business and Economics	158	0.3%	165	0.3%
Communication and Information	3727	6.6%	5738	9.5%
Design	246	0.4%	254	0.4%
Education	682	1.2%	613	1.0%
Engineering	242	0.4%	500	0.8%
Fine Arts	5090	9.0%	5814	9.7%
Public Health	278	0.5%	515	0.9%
UKC	1371	2.4%	922	1.5%
Grand Total	56541	100%	60195	100%

STATE OF THE CORE

BY THE NUMBERS – AY2013

	% Capacity	# Sections	Avg. Sec
Intellectual Inquiry – Arts & Creativity	86%	202	21.5
Intellectual Inquiry – Humanities	81%	230	28.4
Intellectual Inquiry – Natural/Physical/Math Sciences	75%	274	37.1
Intellectual Inquiry – Social Sciences	72%	222	34.4
Composition & Communication I	87%	169	22.3
Composition & Communication II	85%	195	21.8
Quantitative Foundations	76%	200	26.7
Statistical Inferential Reasoning	89%	189	24.1
Community, Culture and Citizenship in the USA	78%	202	27.4
Global Dynamics	78%	210	24.6
Grand Total	79%	2093	27.4

AGENDA

- ▶ State of the Core
- ▶ **Assessment Update**
- ▶ Financial Model and UK Core
- ▶ Ensuring Quality of the Core

ASSESSMENT UPDATE SCHEDULE

Assessment Date	Outcomes Assessed	Collection Window
May 2013	Comp & Comm Citizenship (U.S. & Global)	Spring 2012 Fall 2012
May 2014	Inquiry Quantitative Reasoning	Fall 2012 Spring 2013 Summer 2013 Fall 2013
May 2015	Comp & Comm Citizenship (U.S. & Global)	Spring 2013 Summer 2013 Fall 2013 Spring 2014 Summer 2014 Fall 2014
May 2016	Inquiry Quantitative Reasoning	Spring 2014 Summer 2014 Fall 2014 Spring 2015 Summer 2015 Fall 2015

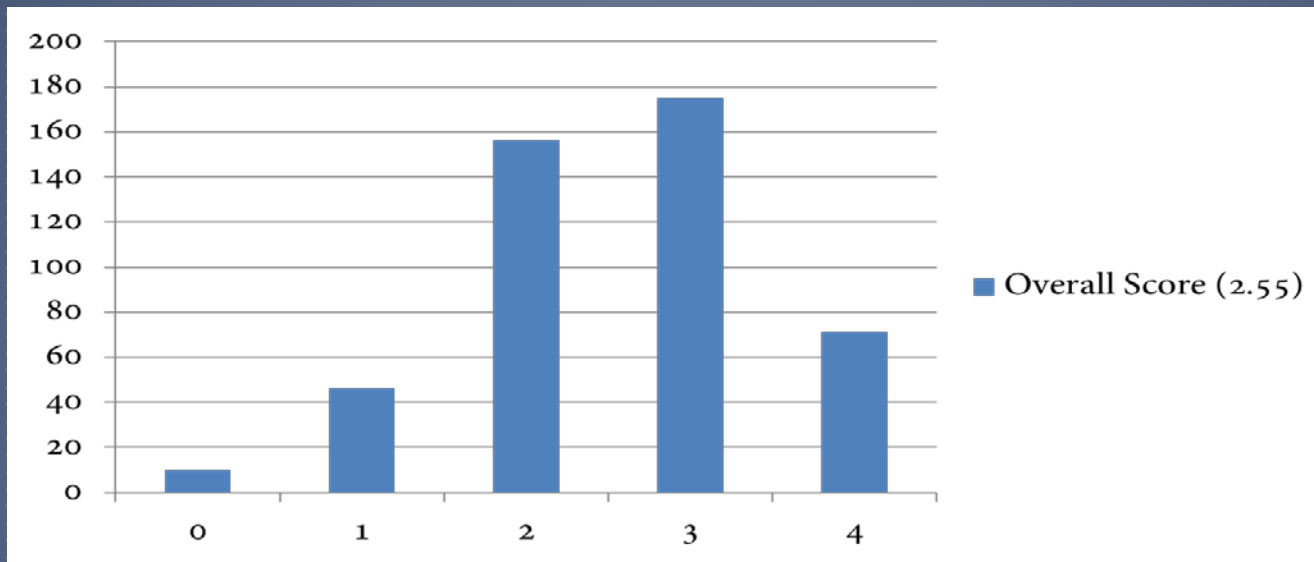
ASSESSMENT UPDATE SCHEDULE

Assessment Date	Outcomes Assessed	Collection Window
May 2013	Comp & Comm Citizenship (U.S. & Global)	Spring 2012 Fall 2012
May 2014	Inquiry Quantitative Reasoning	Fall 2012 Spring 2013 Summer 2013 Fall 2013
May 2015	Comp & Comm Citizenship (U.S. & Global)	Spring 2013 Summer 2013 Fall 2013 Spring 2014 Summer 2014 Fall 2014
May 2016	Inquiry Quantitative Reasoning	Spring 2014 Summer 2014 Fall 2014 Spring 2015 Summer 2015 Fall 2015

ASSESSMENT UPDATE

COMMUNICATION & COMPOSITION

- ▶ Pilot assessment of oral assignments
- ▶ Change from holistic to hybrid scoring



ASSESSMENT UPDATE

COMMUNICATION & COMPOSITION

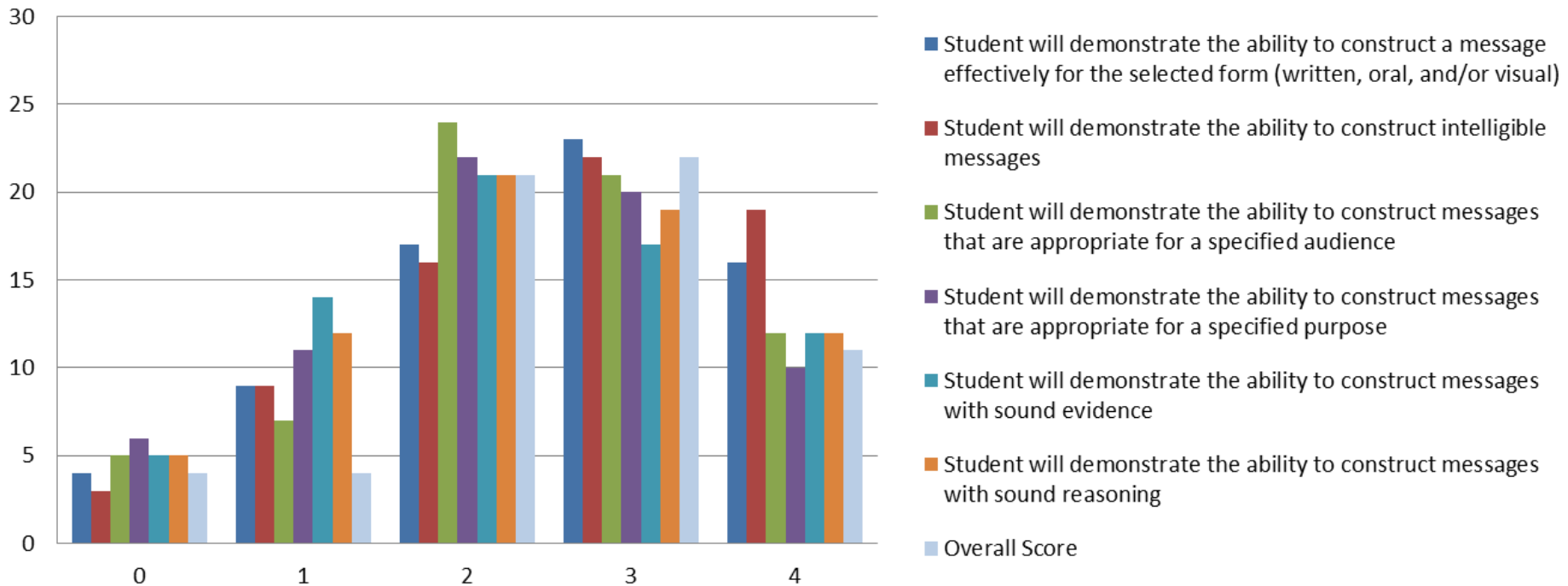
► 14 faculty evaluators

	N	Overall Score Mean	sd	% 2 or better	% inter-rater agreement
Written	177	2.24	1.06	75.1	87.5
Oral (pilot)	68	2.85	.78	95.6	n/a

ASSESSMENT UPDATE

COMMUNICATION & COMPOSITION

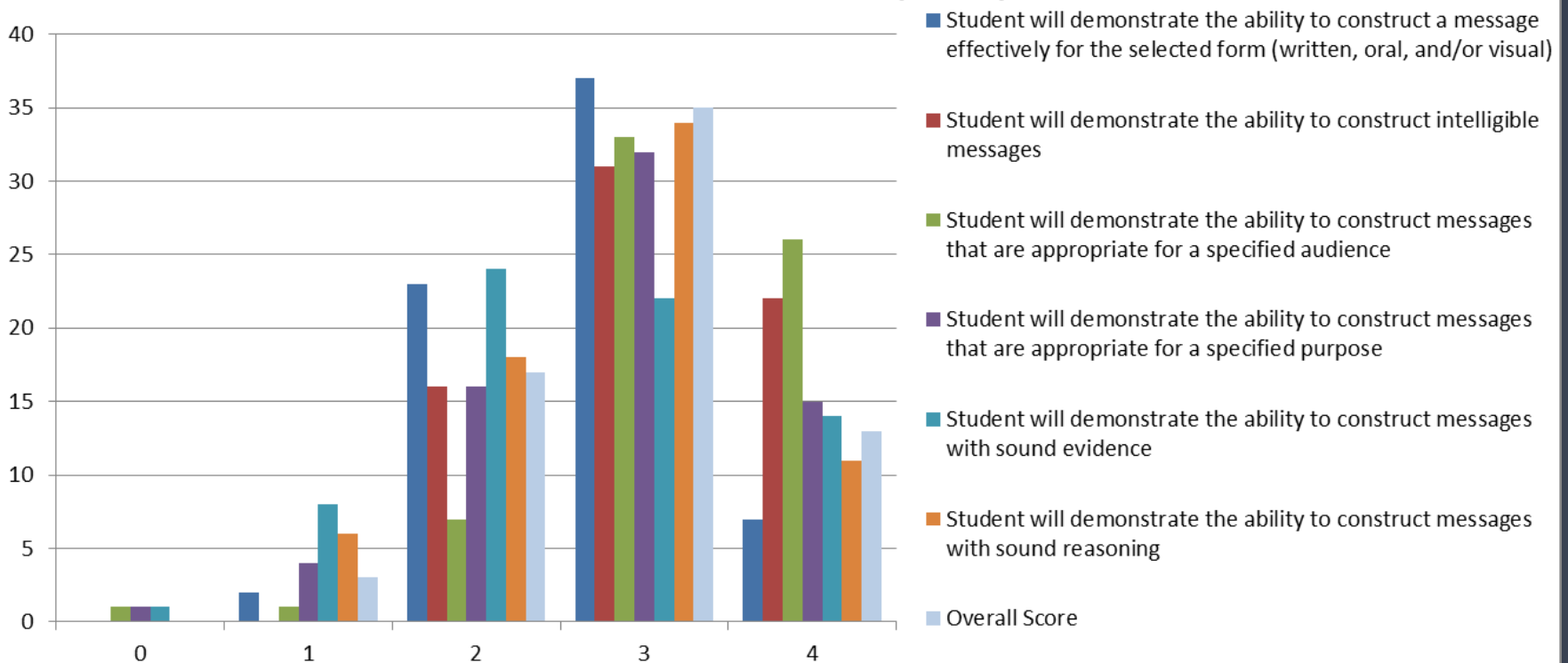
Total Score Counts (n=178)



ASSESSMENT UPDATE

COMMUNICATION & COMPOSITION

Total Score Counts (n=68)



ASSESSMENT UPDATE

COMMUNICATION & COMPOSITION

- ▶ Next steps:
 - ▶ Portfolio-based assessment discussion
 - ▶ Coordination with GCCR & Presentation U
 - ▶ Respond to assessment results (e.g. sound evidence, information literacy)

ASSESSMENT UPDATE

CITIZENSHIP

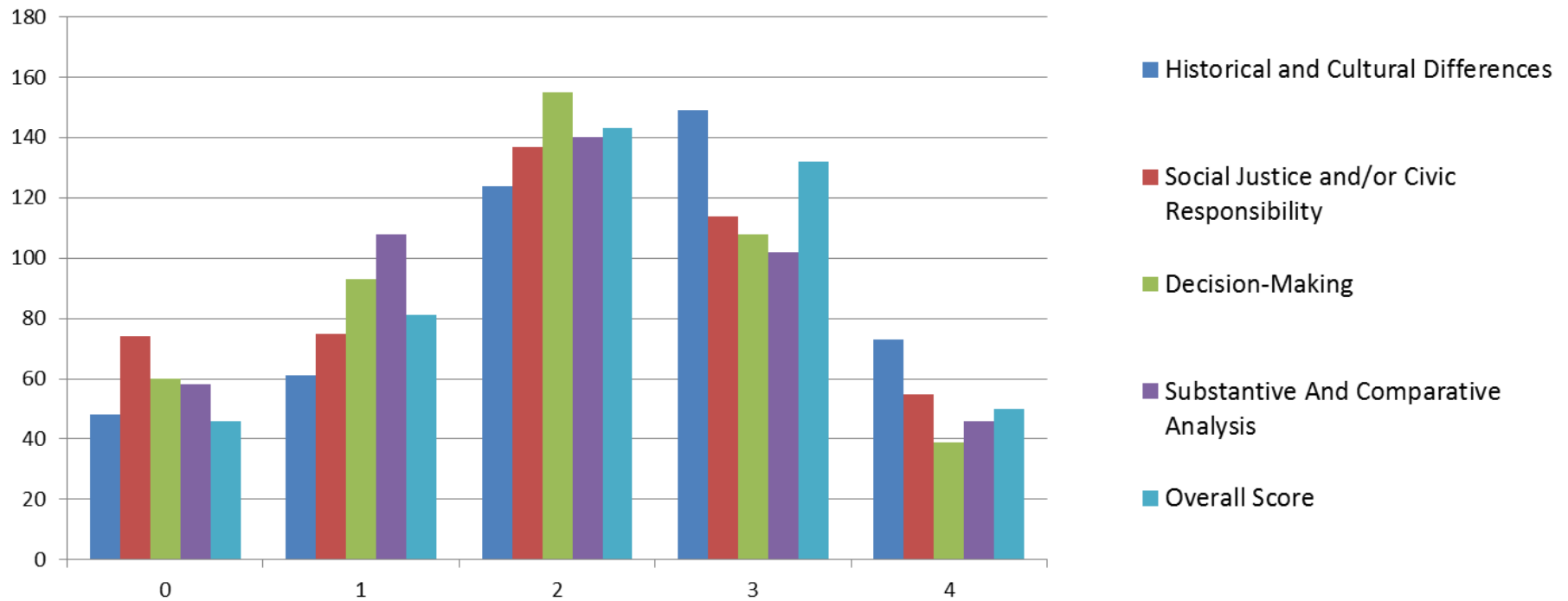
- ▶ 15 faculty evaluators

	N	Overall Score Mean	% 2 or better	% inter- rater agreement
F10, S11	298	2.50	84.6	73.7
S12, F12	455	2.13	71.9	76.6

ASSESSMENT UPDATE

CITIZENSHIP

Total Score Counts (n=455)



ASSESSMENT UPDATE

CITIZENSHIP

▶ Next steps:

- ▶ Convene teaching faculty to discuss overall area and assessment method

Includes:

- ▶ Agriculture
- ▶ Arts & Sciences
- ▶ Communication & Information
- ▶ Design
- ▶ Education
- ▶ Engineering
- ▶ Fine Arts
- ▶ Public Health

AGENDA

- ▶ State of the Core
- ▶ Assessment Update
- ▶ **Financial Model and UK Core**
- ▶ **Ensuring Quality of the Core**

OUR INVESTMENT IN UK CORE

- ▶ 10 Years of Faculty Effort
- ▶ Over 100 Individual Faculty Directly Involved
- ▶ 236 New or Revised Courses
- ▶ \$5.3 million in Central Funding

AN INNOVATIVE CURRICULUM

- ▶ WRD/CIS 2 Course Sequence
 - ▶ “Program of Excellence Award” National Communication Association
- ▶ Focusing on Creativity
 - ▶ BERRETT, D. (2013). Creativity: a Cure for the Common Curriculum. *Chronicle Of Higher Education*, 59(30), A33-A36.
- ▶ Inverted Classroom, Peer-to-Peer Evaluation
 - ▶ Dr. Rayens (STA)
- ▶ Utilizing Social Media
 - ▶ Dr. Golding (PSY)

TWO PATHS FOR UNDERGRADUATE EDUCATION

- ▶ “Branding” at Elite, Wealthy Institutions
 - ▶ Dartmouth and UPenn put “Placement” back in AP
- ▶ Stranding Public Universities and State Systems
 - ▶ TX, FL, WI, CA explore the \$10,000 degree
 - ▶ Redistribution of State Resources toward Career Preparation
 - ▶ 90-credit hour Baccalaureate Degrees
 - ▶ National College Scorecard

FACTORS IN OUR DECISIONS

- ▶ Qualities of UK Core
 - ▶ 30 credit hour, minimalist Gen Ed
 - ▶ SLOs based on Competencies, not Discipline Specific
- ▶ New Budget Model
 - ▶ Incentivizes SCH Production
 - ▶ Values Collaboration and Quality
- ▶ Increased Competition for Core-driven SCH?
 - ▶ Laissez-faire
 - ▶ Free market, free-for-all

A THIRD WAY AT UK?

- ▶ The role of faculty governance
 - ▶ Timely vetting based on academic merit
 - ▶ How do we ensure enough seats without wasteful overcapacity?
- ▶ What's the role of UK Core in recruitment and retention (our “brand”)?
- ▶ How do we protect UK Core from disinvestment?

CELT

SUPPORTING UK CORE

- ▶ Course Design Consultations
- ▶ Leveraging Learning Technology
- ▶ Flipped Courses
- ▶ Workshops
- ▶ Class Observations
- ▶ UK 101

UK CORE SUMMIT

Thanks for your continued support of
UK Core!

www.uky.edu/UKCore