

Agricultural News in Jefferson County

Cooperative Extension Service
Jefferson County
810 Barrett Ave
Louisville, KY 40204-1782
(502) 569-2344
www.ca.uky.edu/ces

AGRICULTURE & NATURAL RESOURCES

February-2005

Spring grazing school.



The Kentucky Spring Grazing School will be held at the Morehead State University Expo Center in Morehead, KY. The School will start at 8:00 a.m. EST on April 20 and conclude at 3:30 on April 21. The two day school will feature classroom and field exercises. Cost for the Grazing School is \$100.00 and includes Grazing notebook, handouts, refreshments, three meals and a copy of Southern Forages. To register, make check payable to the Kentucky Forage & Grassland Council and send to Rebecca Smith, 400 W.P. Garrigus Building, Lexington, KY

40546-0215. For more information contact the Jefferson County Cooperative Extension Office.

Tom Keene joins UK Forage team.

Mr. Tom Keene has accepted the Hay Marketing Specialist position in the Department of Plant & Soil Science, College of Agriculture, University of Kentucky, effective April 1. Tom has over twenty years experience working in the area of hay marketing. He has been an important member of the Kentucky Forage Team having served in many capacities with KFGC including board member. He is Past President of the American Forage & Grassland Council. He has been a “regular” at the Kentucky Alfalfa Conference and was a featured speaker on several conference programs. We are excited about Tom joining our UK Forage Team and look forward to working with him in his new position. Tom – Welcome Aboard!

USDA invites tobacco producers and quota holders to meeting on tobacco transition payment program.

Lexington KY, March 2, 2005 - USDA's Farm Service Agency (FSA) will hold an information meeting for tobacco quota producers and quota holders on March 8, 2005 at 7:00 pm ET in Lexington to discuss the new Tobacco Transition Payment Program (TTPP). The public meeting will be in the Bluegrass Ballroom at the Lexington Center, 430 West Vine Street in Lexington. Parking will be available in lots across from Rupp Arena and the Hyatt Regency on East High Street.



This meeting is for tobacco quota producers who are owners, operators, landlords, tenants, or sharecroppers who shared in the risk of producing tobacco anytime between 2002 and 2004. It is also for quota holders who owned a farm with a 2004 basic marketing quota as of October 22, 2004. The meeting will explain who's eligible for the Tobacco Transition Payment Program (also called the Tobacco Buyout), what types of quota tobacco are eligible and how quota producers and quota holders can obtain payments. Sign-up for this program begins March 14 and ends June 17, 2005. Producers not signing up before June 17 will not receive a 2005 payment. Additional information on the Tobacco Transition Payment Program is available on-line at from FSA County Offices or www.fsa.usda.gov/tobacco

National Volunteer Week is April 17 - 23, 2005.

This provides a good opportunity to show our volunteers how much we appreciate their service.



Following is a brief listing of some low-cost (or no-cost!) ways of recognizing our volunteers during the national celebration. Remember that recognition should not consist of only an annual event. Rather, to be most effective, recognition should be a part of all programs and activities, should be given in front of peers, should be creative and personalized and should be commensurate with the activity. Have fun recognizing your volunteers in creative ways!



Please remember that our next Agribusiness Industry Network meeting will be:

Wednesday, March 9, 2005

3:00 p.m. – 4:00 p.m.

GLI

5th Floor Board Room

Tom McMahon, Executive Director of the Health Enterprises Network will speak on new biotechnology related to Agribusiness Products

REMEMBER! Invite someone to this meeting!

To confirm your attendance, contact Angie Vitatoe at 625-0151 or avitatoe@greaterlouisville.com

Tobacco Buyout Meeting

**Friday, March 11th, 7 pm
Bullitt County Extension Office**

An informative meeting is scheduled for the Tobacco Transition Payment Program also known as the "Tobacco Buyout". Bullitt-Spencer-Jefferson County FSA Office will start taking applications on March 14, 2005 and will run through June 17, 2005. A designated schedule approach by the first letter of the last name for holders/producers will be implemented. Contact the County FSA Office in Mount Washington at (502) 538-2221 or 2222 or toll free 1800-441-2592.

Jefferson County Extension Council Agricultural Budget 2005-2006

The following table summarizes the plan approved by the Jefferson County Agricultural Advisory Council in the meeting of February 20, 2005. The budget priorities presented in the base document focuses on the areas of greatest need, as well as those of critical importance for the future of agriculture in Jefferson County.

	Expenses				Revenue		% of the total requested to the District Board
	Fix + variable cost	CES cost	Volunteer effort (Value in \$)	Total cost	External / Private support	Request to the JC District Board	
Personnel / Animal Science major	\$47,100	\$0	\$0	\$47,100	\$0	\$47,100	100%
Personnel / Ag field technician	\$37,140	\$0	\$0	\$37,140	\$0	\$37,140	100%
Materials/Equipment for educational Programs	\$18,615	\$54,305	\$81,784	\$158,424	\$148,709	\$16,591	6.13%
Materials/equipment for technology transfer	\$23,900	\$148,050	\$134,770	\$306,720	\$46,292	\$0	0.00%
Totals				\$549,383	\$195,001	\$100,831	18.35%

We recognize that this budget request, developed for the District Board approval may not be funded at the level requested. However, the Agricultural Advisory Council is ready to do its part to assist the county in finding alternative funds from external sources like foundations, NGOs, and private industry. We believe, however, that it is important not to lose sight of the larger goals shared in the complex documents developed in the process of building this last small table.

The justification for the two new positions is simple. The already overloaded ANR Agent needs assistance in managing the prioritized Programs and Projects for 2005-06. The Animal Science major will support the development of the new equine Program with over 400 horse owners/ 6,000 horses; the same Animal Science major will help to run the Grazing System prioritized as the number two program. The field assistant will provide the support needed to manage most of the routine field work with the demonstration plots, our number one priority for Jefferson County.

Increased funding will support critical education and technology transfer needed by farmers to stay above the more competitive markets. The education efforts will be concentrated in soil fertility, forage nutrition, grazing systems with innovative approaches, presentation of new non tested forages, and other management practices to increase profitability.

Foot and Mouth disease and mad cow disease are names that have been in the news lately. Jefferson County agriculture is a global business where the possibilities for bioterrorism exist with no apparent effort to become prepared. The budget has identified a small amount to provide the ANR Agent with the basic equipment needed to handle suspected cases as trained by the University of Kentucky. The impact of not being able to identify and control potentially severe cases on time can have a devastating effect on the economy for the County, for the Commonwealth of Kentucky and for the US.

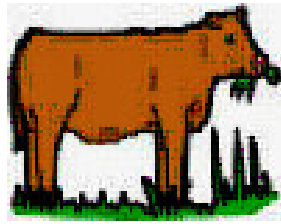
Jefferson County faces increasing risks due to disease like blue mold in tobacco and from the new soybean rust. An increase in base funding is greatly needed to maintain and enhance capacity of the “Early Warning Network” to detect threats before an economic threshold is developed. The need to respond quickly to new and unforeseen threats is a must to secure the flow of basic elements needed to feed the citizens of Jefferson County.

All of the above program priority areas will include Youth Education on how the food is produced and to increase the awareness of urban young consumers about farming and the environment.

The well-being of children, youth, and families is essential to the well-being of our society, now and in the future.

Increased county appropriations have a substantial leveraging effect on the Cooperative Extension’s ability to attract grants and other external funds that bring dollars back to Jefferson County to support its agricultural and natural resource economy.

With volunteer interest greatly exceeding expectations and the growing opportunities to serve business, industry and governments, additional support is needed to enable the Cooperative Extension to meet its tremendous potential to serve all.



Graze 2005

Instructors schedule

Topics:

Part 1

Introduction

- Benefits of Improved Grazing 20 min
- **No-till Drill Demonstration** 40 min
- Grass and Legumes Response to Grazing 20 min
- Traditional Forages 20 min
- Managing Fertility 20 min
- Weed Control 20 min
- Establishment of Forages 20 min

Part 2

- Meeting Nutritional Needs on Pasture 20 min
- Shade and Water 20 min
- Water Systems and Water Quality **Demonstration** 30 min
- Minerals for Grazing 20 min
- Tall Fescue Endophyte 20 min
- Animal Disorders on Pasture 20 min
- Parasite Control 20 min
- Electric Fencing —**Demonstration** 30 min

Part 3

- Extending the Grazing Season 20 min
- Managing Your System 20 min
- Forage Needs and When to Move Cattle 20 min
- Forages for Problem Times 20 min
- Laying Out **Your** Grazing System —**Demonstration** 60 min