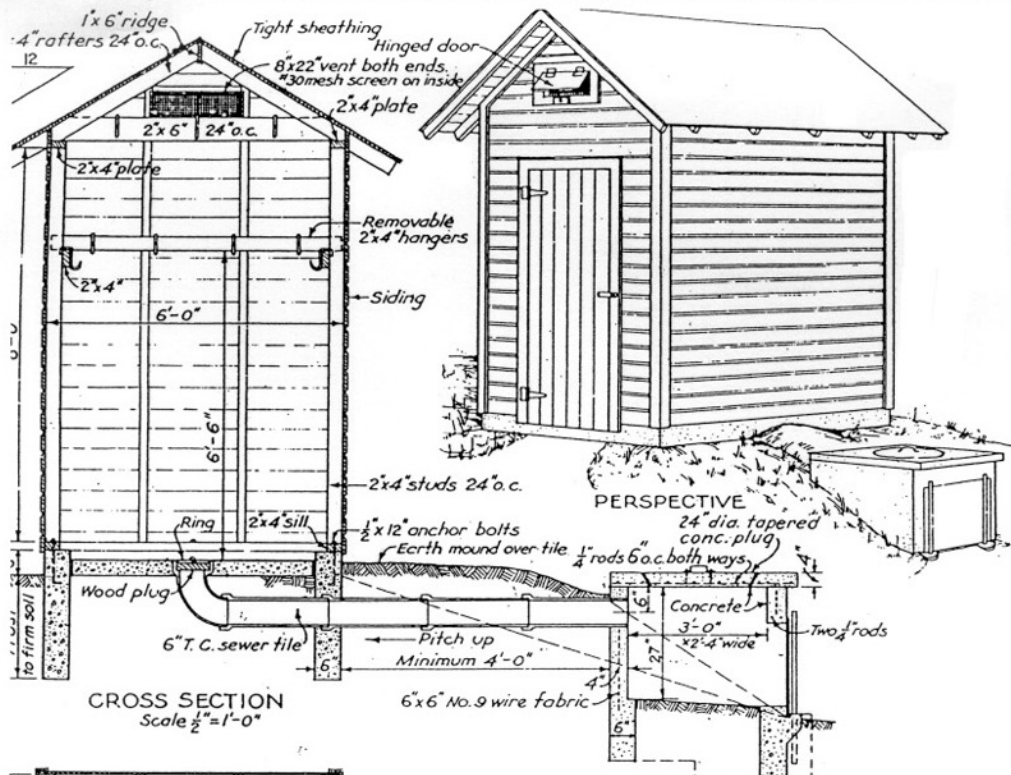


## **Important: Warranty Disclaimer for Plans**

For the convenience of our clientele, this website makes available conceptual plans that can be helpful in planning buildings, facilities, or other structures. They were developed over many years by engineers at Land Grant universities through the former USDA Cooperative Farm Buildings Plan Exchange. *Regardless of the original intent, these are older plans that provide conceptual information only, and are not to be considered or used as construction plans.*

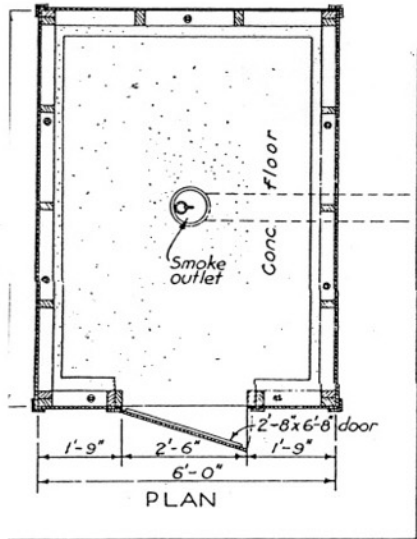
These plans do not claim to represent the most current technology or the most recent construction techniques, standards, or codes. For example, over the years there have been changes in the National Design Specifications for Wood Construction, changes in the strengths and types of building materials, and changes in fasteners, among other things. Those changes, along with variations in climate, building codes, and other factors, make it imperative that professional services be utilized for your specific project. Suggested services include, but are not limited to, structural design, assurance of compliance with codes and regulations, site selection, construction supervision, and provision for utilities, waste management, and access. *These plans do not replace the need for competent design assistance in developing safe, legal, and well-functioning agricultural buildings and systems.*

**Neither the University of Kentucky, the Midwest Plan Service, the United States Department of Agriculture, nor any of the cooperating Land Grant universities, warranty these plans. They are for conceptual use only and are not for use as construction plans.**

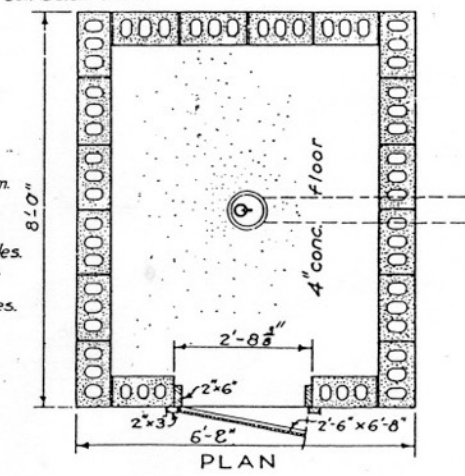
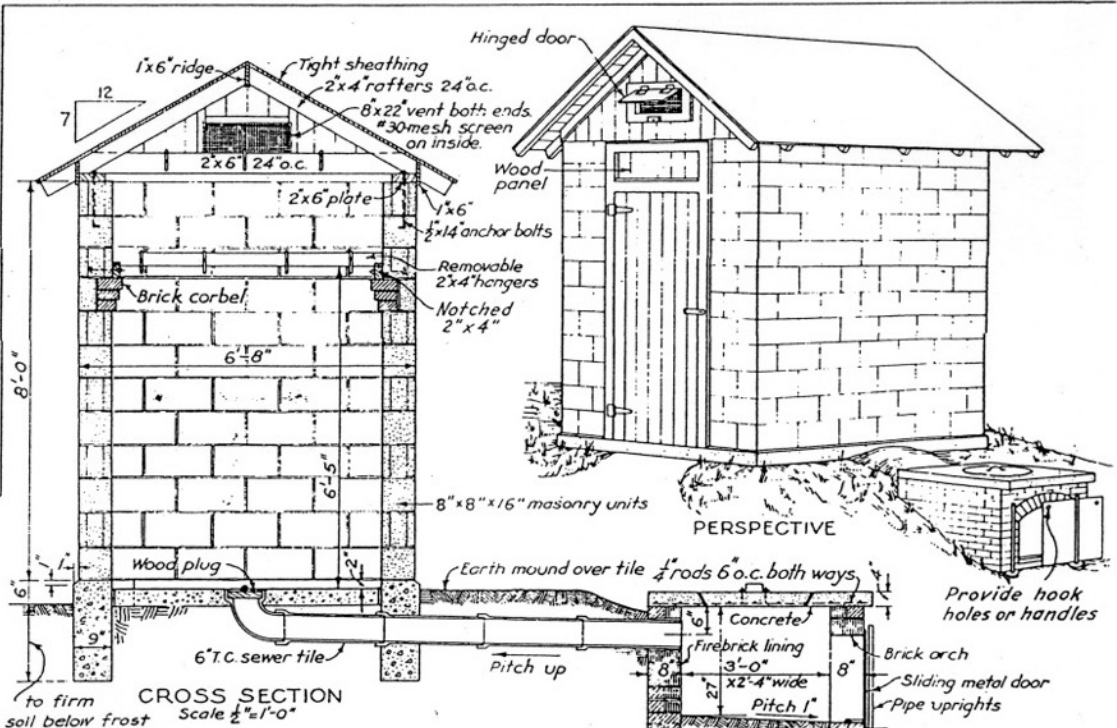


**BILL OF MATERIALS**  
**SMOKEHOUSE**  
**CONCRETE** 1:3:5 mix  
 10 bags cement, 1 cu. yd. sand, 1 1/2 cu. yds. gravel.  
**LUMBER**  
 3 pieces 2x6x6-0 cross ties.  
 3 " 2x4x12-0 header, and hangers  
 12 " 2x4x10-0 sills, studs, and rafters.  
 23 " 2x4x8-0 " " plates, and hangers.  
 2 " 1x6x10-0 ridge and trim.  
 2 " 1x6x7-0 door battens.  
 6 " 1x4x10-0 corner boards and trim.  
 6 " 1x4x8-0 trim.  
 6 " 1x6x7-0 T & G boards for door.  
 275 ft. B.M. 6" drop siding.  
 120 ft. B.M. roof sheathing.  
 Roofing or asphalt shingles to cover 100 sq. ft. roof area.  
**MISCELLANEOUS**  
 7-1/2 x 12 anchor bolts, with nuts and washers.  
 1 pair 8" Tee hinges, 1 safety hasp.  
 2-pair 2x2 hinges, for vent doors.  
 1-piece metal flashing-6x40"  
 4 lin. ft. #30-mesh wire screen-10' wide.  
 4 lengths 6" T.C. sewer pipe, 1-6" 90° T.C. elbow.  
 Nails, hanging hooks, and paint not included.

**FIREBOX**  
**CONCRETE** 1:2:3 mix.  
 6 bags cement, 1/2 cu. yd. sand, 1/3 cu. yd. broken hard brick, gravel or stone, (brick more heat resistant)  
**MISCELLANEOUS**  
 10 lin. ft. 6x6 No. 9 wire fabric 30" wide  
 6 pieces 1/2" steel rods 42" long.  
 10 " " " " 32" "  
 2 " 1/2" pipe 36" long.  
 1-piece 24x32" metal, sliding door.



**BILL OF MATERIALS**  
**SMOKEHOUSE**  
**CONCRETE AND MORTAR.**  
 Concrete 1:3:5 mix. Mortar 1:3 + 10% lime.  
 bags cement, 1 1/2 cu. yds. sand, 2 cu. yds. gravel  
 lbs. hydrated lime.  
 2 8x8x16 smooth face masonry units.  
 8x4x16 " " " "  
 8x4x8 " " " "  
 8x8x8 " " half " "  
 8x8x16 " " corner " "  
 8x8x16 " " jamb " "  
 8x8x8 " " half " "  
 ) common brick  
**LUMBER**  
 pieces 2x6x8-0 plates and door jambs.  
 " 2x6x7-0 " " cross ties.  
 " 2x4x10-0 rafters, gable-end studs.  
 " 2x4x6-0 removable hangers  
 " 2x3x8-0 door casing.  
 " 1x6x10-0 " battens, ridge, trim.  
 " 1x4x10-0 trim.



**CONCRETE AND MORTAR.**  
 Concrete 1:3:5 mix. Mortar 1:3 + 10% lime.  
 bags cement, 1 1/2 cu. yds. sand, 2 cu. yds. gravel  
 lbs. hydrated lime.  
 2 8x8x16 smooth face masonry units.  
 8x4x16 " " " "  
 8x4x8 " " " "  
 8x8x8 " " half " "  
 8x8x16 " " corner " "  
 8x8x16 " " jamb " "  
 8x8x8 " " half " "  
 ) common brick  
**LUMBER**  
 pieces 2x6x8-0 plates and door jambs.  
 " 2x6x7-0 " " cross ties.  
 " 2x4x10-0 rafters, gable-end studs.  
 " 2x4x6-0 removable hangers  
 " 2x3x8-0 door casing.  
 " 1x6x10-0 " battens, ridge, trim.  
 " 1x4x10-0 trim.  
**MISCELLANEOUS**  
 1 ft. B.M. roof sheathing. 56 ft. B.M. 1x6 T16 door, gables.  
 Roofing or asphalt shingles to cover 100 sq. ft. roof area.  
**MISCELLANEOUS**  
 7-1/2 x 12 anchor bolts. 1 pr. 8" Tee hinges. 1 pr. 2x2 hinges.  
 38 metal flashing. 4 lin. ft. #30-mesh screen 10' wide.  
 Nails, hanging hooks, and paint not included.  
**FIREBOX**  
 6 bags cement, 1/2 cu. yd. sand, 1/3 cu. yd. gravel  
 6 common brick, 90 firebrick.  
 3 steel rods 40" long. 6-1/2 steel rods 48" long.  
 2 pieces 1/2" pipe 36" long.  
 metal sliding door 24x32".

(A)

(B)

COOPERATIVE EXTENSION WORK IN  
 AGRICULTURE AND HOME ECONOMICS  
 DEPARTMENT OF AGRICULTURAL ENGINEERING  
 COLLEGE OF AGRICULTURE  
 UNIVERSITY OF KENTUCKY  
 AND  
 UNITED STATES DEPARTMENT OF AGRICULTURE COOPERATING

**SMOKE HOUSE**

USDA '65 EX. 5695 SHEET 1 OF 1  
 REVISED 1972