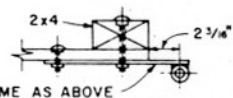
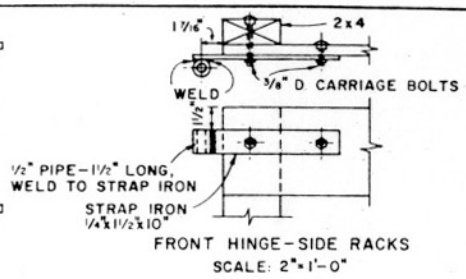
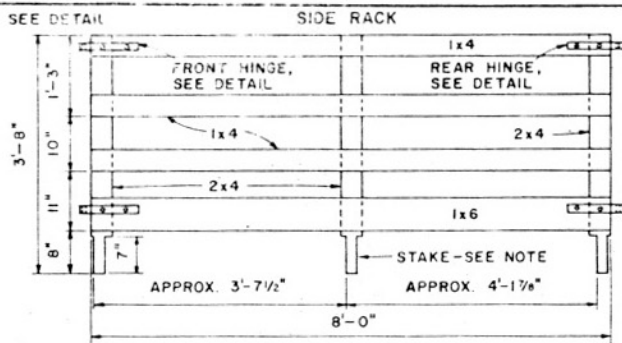
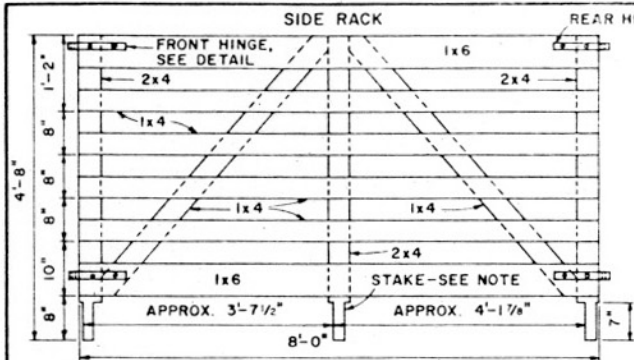


## **Important: Warranty Disclaimer for Plans**

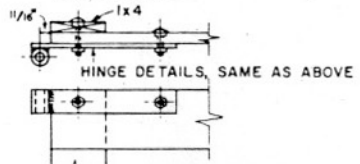
For the convenience of our clientele, this website makes available conceptual plans that can be helpful in planning buildings, facilities, or other structures. They were developed over many years by engineers at Land Grant universities through the former USDA Cooperative Farm Buildings Plan Exchange. *Regardless of the original intent, these are older plans that provide conceptual information only, and are not to be considered or used as construction plans.*

These plans do not claim to represent the most current technology or the most recent construction techniques, standards, or codes. For example, over the years there have been changes in the National Design Specifications for Wood Construction, changes in the strengths and types of building materials, and changes in fasteners, among other things. Those changes, along with variations in climate, building codes, and other factors, make it imperative that professional services be utilized for your specific project. Suggested services include, but are not limited to, structural design, assurance of compliance with codes and regulations, site selection, construction supervision, and provision for utilities, waste management, and access. *These plans do not replace the need for competent design assistance in developing safe, legal, and well-functioning agricultural buildings and systems.*

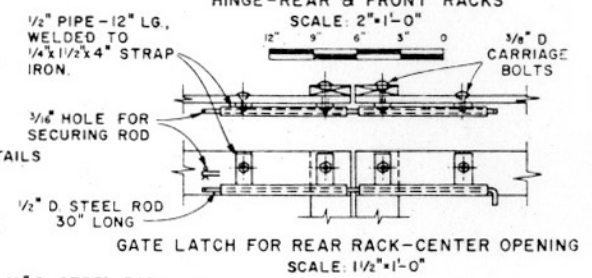
**Neither the University of Kentucky, the Midwest Plan Service, the United States Department of Agriculture, nor any of the cooperating Land Grant universities, warranty these plans. They are for conceptual use only and are not for use as construction plans.**



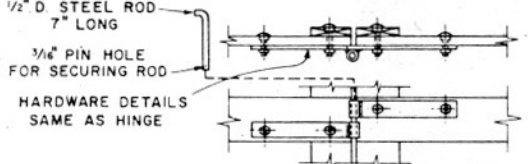
HINGE DETAILS, SAME AS ABOVE  
REAR HINGE-SIDE RACKS  
SCALE: 2" = 1'-0"



HINGE-REAR & FRONT RACKS  
SCALE: 2" = 1'-0"



GATE LATCH FOR REAR RACK-CENTER OPENING  
SCALE: 1 1/2" = 1'-0"



GATE LATCH FOR REAR RACK-CENTER OPENING  
SCALE: 1 1/2" = 1'-0"

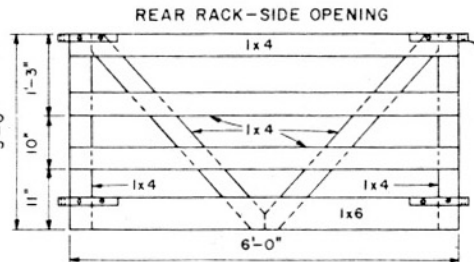
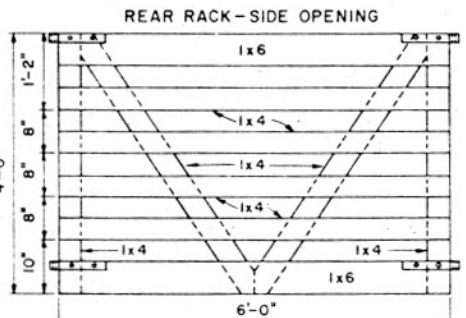
HARDWARE DETAILS

COOPERATIVE EXTENSION WORK IN  
AGRICULTURE AND HOME ECONOMICS

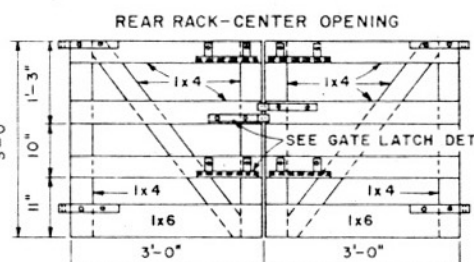
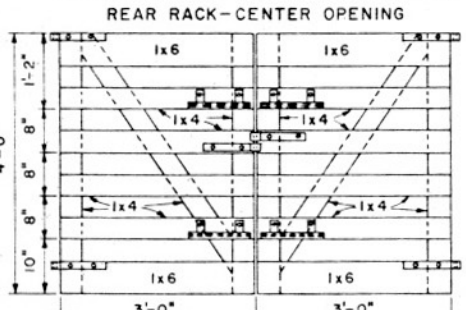
UNITED STATES DEPARTMENT OF AGRICULTURE COOPERATING

PICK-UP TRUCK RACKS

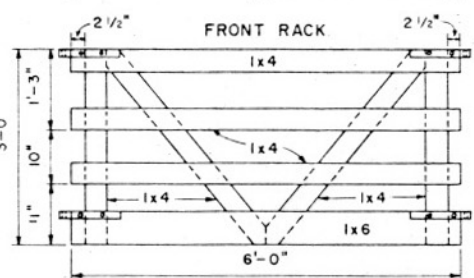
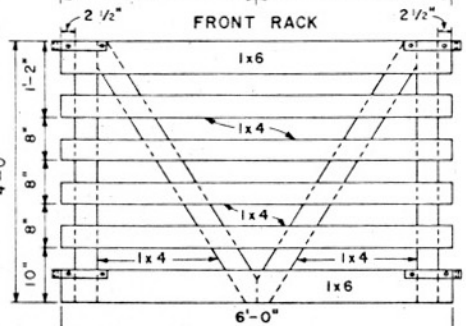
W. VA. '75 6192 SHEET 1 OF 1



REAR RACK & FRONT RACK HINGES,  
SEE DETAIL

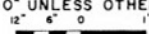


SEE GATE LATCH DETAILS



LIGHT DUTY RACKS

NOTE:  
STAKE PLACEMENT SHOULD BE CHECKED AGAINST SLOTS IN SPECIFIC TRUCK THEN SPACED TO FIT. ALL WOODEN MEMBERS TO BE FASTENED WITH TWO 3/8" DIA CARRIAGE BOLTS AT EACH JOINT.  
REVERSAL STRAP HINGE OR STEEL PINTLE HINGE MAY BE USED FOR RACK HINGES. SIDE HINGE, BARREL BOLT OR HINGE HASPS MAY BE USED FOR GATE LATCH.  
TIMBER SHOULD BE SURFACED AND KNOT FREE.  
SCALE: 3/4" = 1'-0" UNLESS OTHERWISE NOTED.



BASED ON: W. VA. UNIV. PLAN NO. MI-143

HEAVY DUTY RACKS