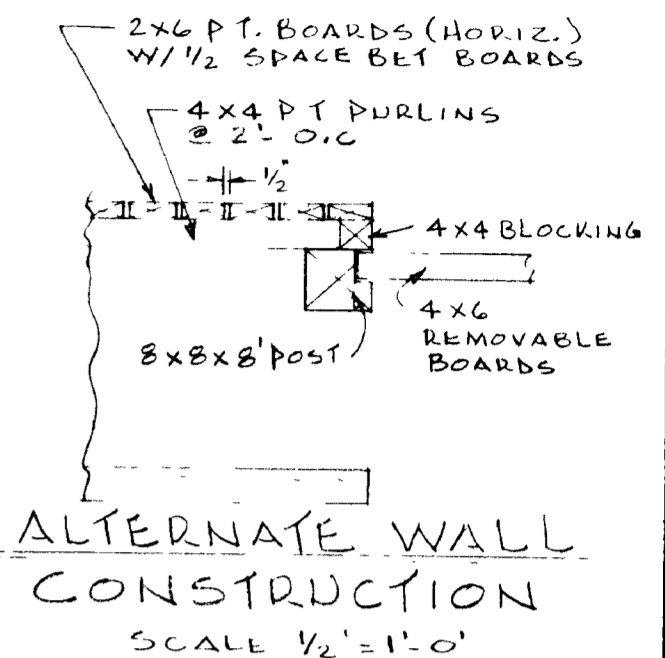
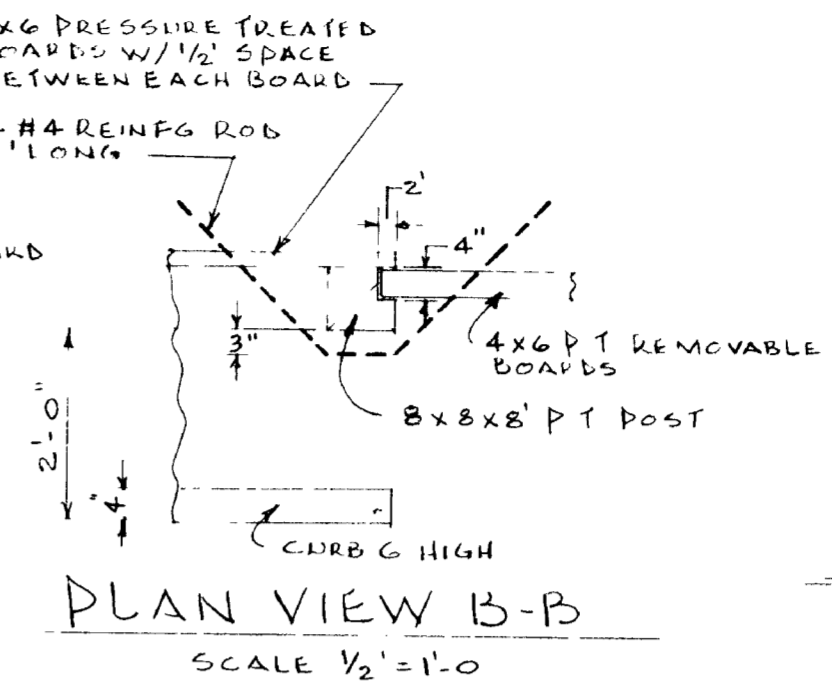
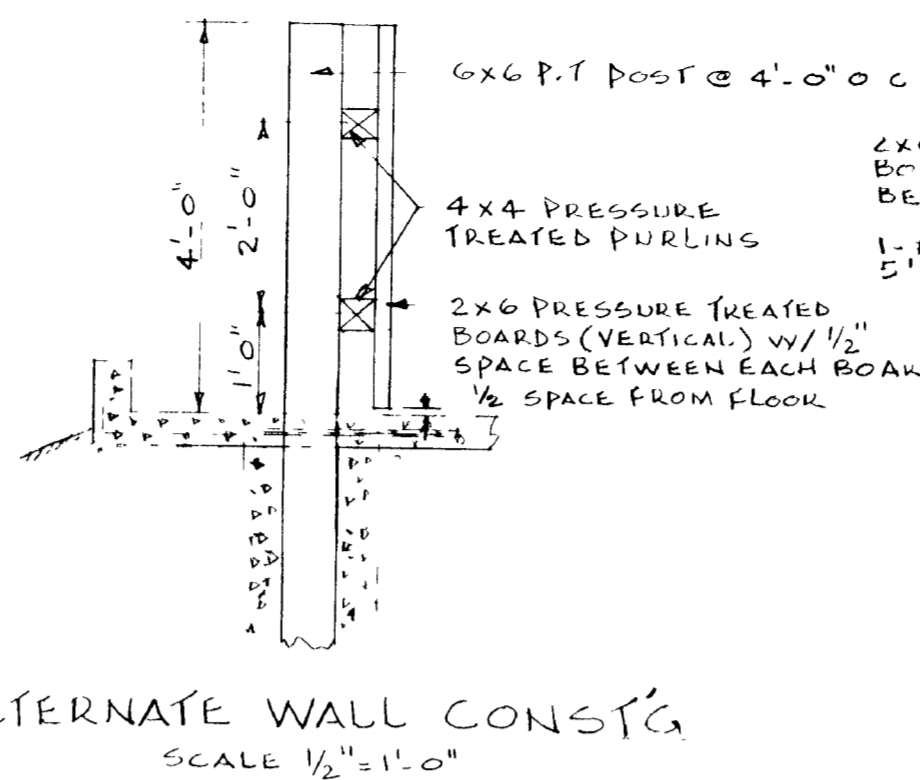
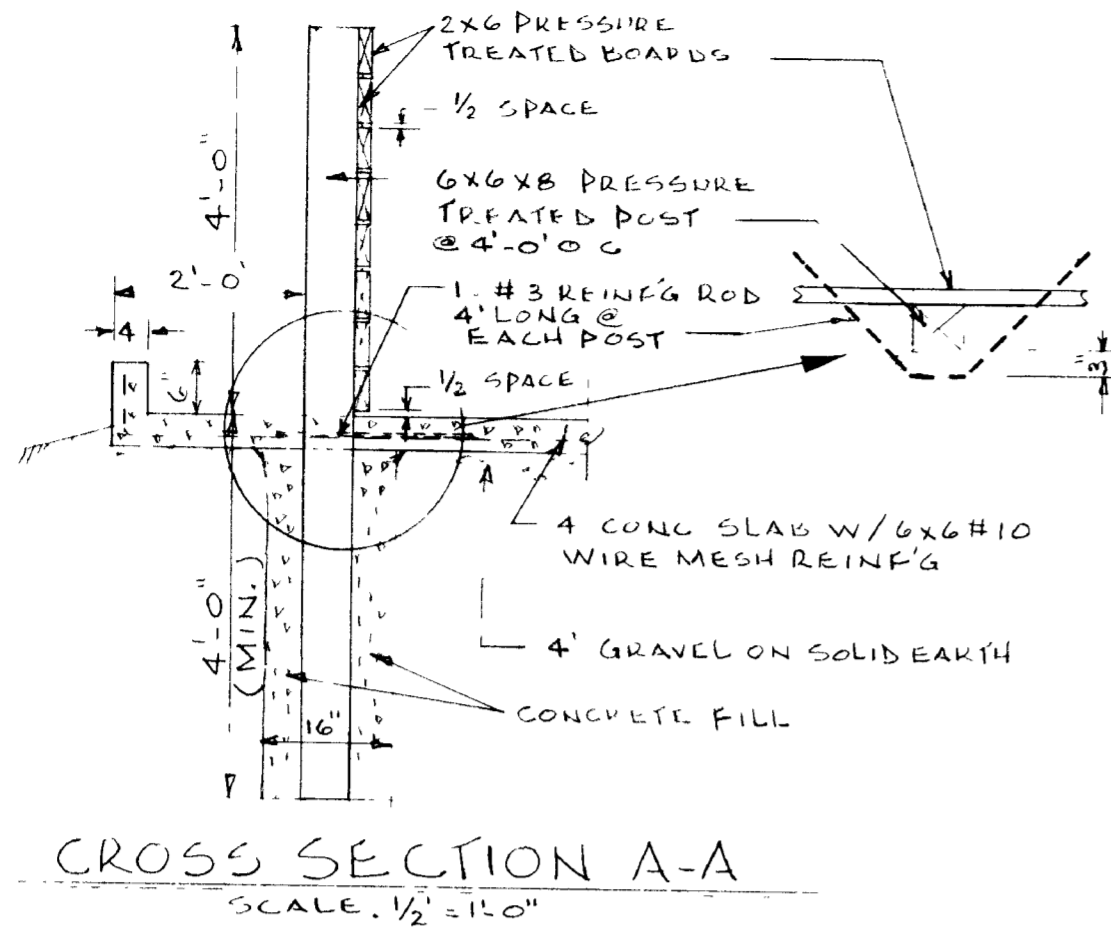


Important: Warranty Disclaimer for Plans

For the convenience of our clientele, this website makes available conceptual plans that can be helpful in planning buildings, facilities, or other structures. They were developed over many years by engineers at Land Grant universities through the former USDA Cooperative Farm Buildings Plan Exchange. *Regardless of the original intent, these are older plans that provide conceptual information only, and are not to be considered or used as construction plans.*

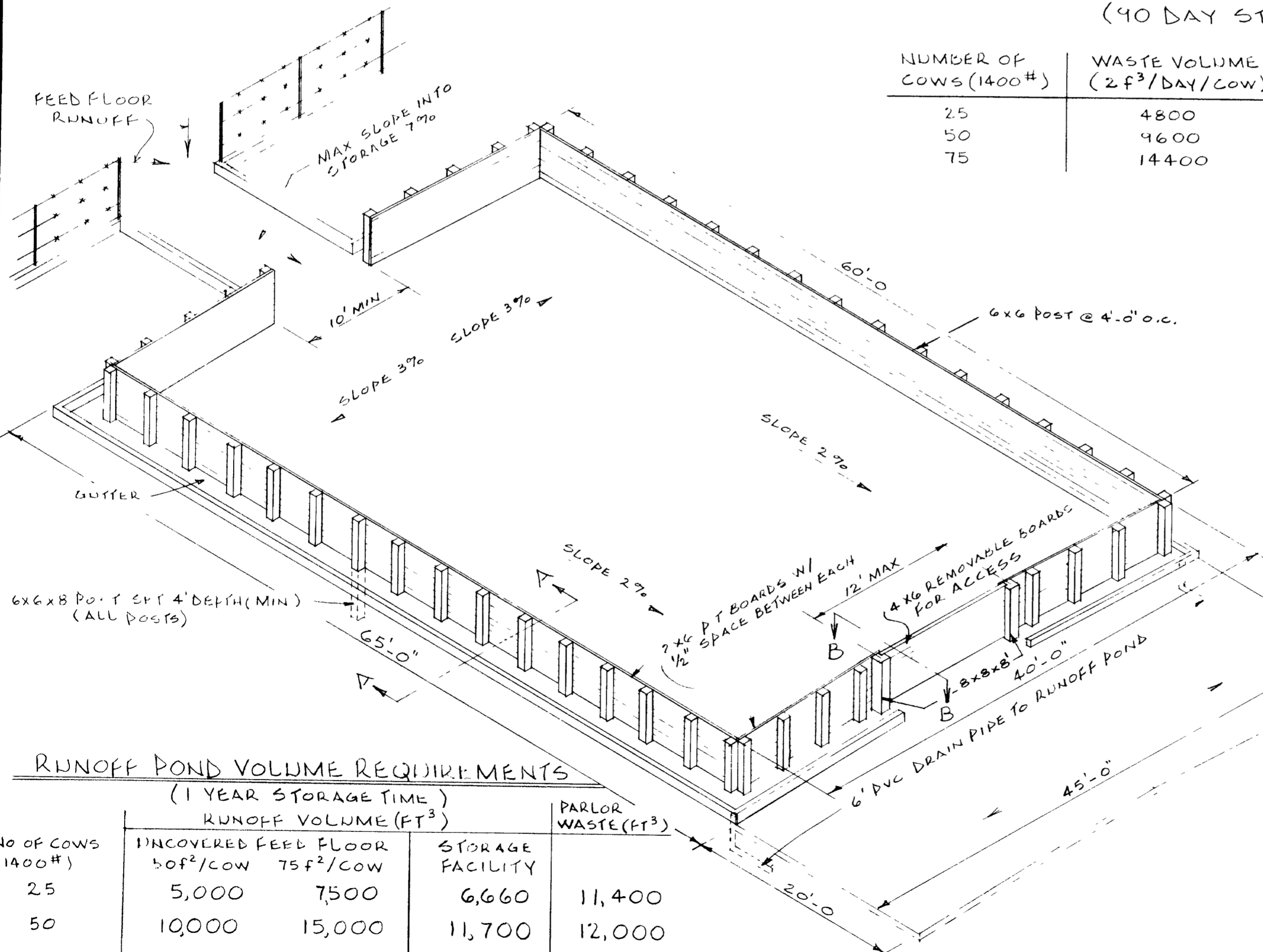
These plans do not claim to represent the most current technology or the most recent construction techniques, standards, or codes. For example, over the years there have been changes in the National Design Specifications for Wood Construction, changes in the strengths and types of building materials, and changes in fasteners, among other things. Those changes, along with variations in climate, building codes, and other factors, make it imperative that professional services be utilized for your specific project. Suggested services include, but are not limited to, structural design, assurance of compliance with codes and regulations, site selection, construction supervision, and provision for utilities, waste management, and access. *These plans do not replace the need for competent design assistance in developing safe, legal, and well-functioning agricultural buildings and systems.*

Neither the University of Kentucky, the Midwest Plan Service, the United States Department of Agriculture, nor any of the cooperating Land Grant universities, warranty these plans. They are for conceptual use only and are not for use as construction plans.



STORAGE FACILITY DIMENSION FOR DIFFERENT HERD SIZES (90 DAY STORAGE)

NUMBER OF COWS (1400#)	WASTE VOLUME (2 F ³ /DAY/COW)	OVERALL DIMENSIONS	
		WITH ACCESS & PAD	WITHOUT ACCESS & PAD
25	4800	37' x 65'	37' x 45'
50	9600	45' x 85'	45' x 65'
75	14400	53' x 101'	53' x 81'



MATERIALS

NO OF COWS (1400#)	CONCRETE		TREATED LUMBER	
	WITH ACCESS	WITHOUT ACCESS	WITH ACCESS	WITHOUT ACCESS
	YD ³	YD ³	No LF	No BF
25	31	22	2x6 984 6x6x8' 36 868 8x8x8' 2 44 4x6x12' 8 193 TOTAL - 2089	40 1080 40 964 TOTAL 2044
50	48	38	2x6 1428 6x6x8' 50 1205 8x8x8' 2 44 4x6x12' 8 193 TOTAL - 2870	54 1524 54 1301 TOTAL 2825
75	68	55	2x6 1812 6x6x8' 62 1494 8x8x8' 2 44 4x6x12' 8 193 TOTAL - 3543	66 1908 66 1590 TOTAL - 3498

RUNOFF POND VOLUME REQUIREMENTS

No of COWS (1400#)	UNCOVERED FEED FLOOR (1 YEAR STORAGE TIME)		STORAGE FACILITY	PARLOR WASTE (FT ³)
	50 F ² /COW	75 F ² /COW		
25	5,000	7,500	6,660	11,400
50	10,000	15,000	11,700	12,000
75	15,000	22,500	17,200	15,600

DAIRY MANURE STORAGE FACILITY

COOPERATIVE EXTENSION SERVICE
AGRICULTURE AND HOME ECONOMICS
DEPARTMENT OF AGRICULTURAL ENGINEERING
COLLEGE OF AGRICULTURE
UNIVERSITY OF KENTUCKY
AND
U.S. DEPARTMENT OF AGRICULTURE COOPERATING

DESIGNED BY J. TARABA	SHEET 1 OF 1
CHECKED BY J.T.R.F.	PLAN NUMBER
DRAWN BY B.E.P.	KY. II. 723-34
DATE 6-82	REVISIONS