

NOTE:
SIDING NOT SHOWN,
SEE DETAILS
AT RIGHT.

NOTE:
ONLY METAL SIDING
SUGGESTED FOR
SLOPED SIDES

**ALTERNATE NO. 1
FOR SIDING
MANSARD DESIGN**
SCALE: 1/2" = 1'-0"

NOTE:
WHEN SIDES ARE PLACED ON
UPPER PORTION OF BARN
FRAMING LUMBER MAY BE
UNTREATED, BUT POLES MUST
BE TREATED.

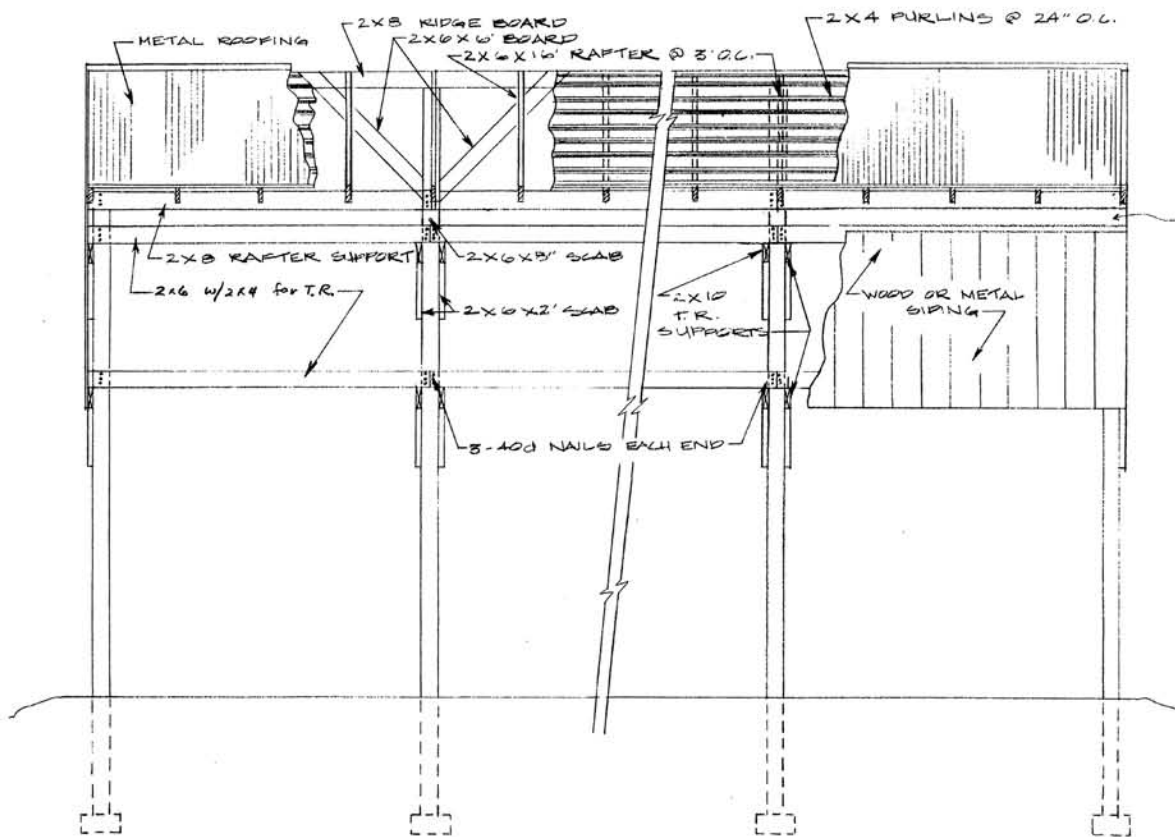
**ALTERNATE NO. 2
FOR SIDING
INSTALLED**
SCALE: 1/2" = 1'-0"

CROSS SECTION
SCALE: 1/2" = 1'-0"

TWO-TIER PARTIALLY ENCLOSED AIR-CURE TOBACCO BARN

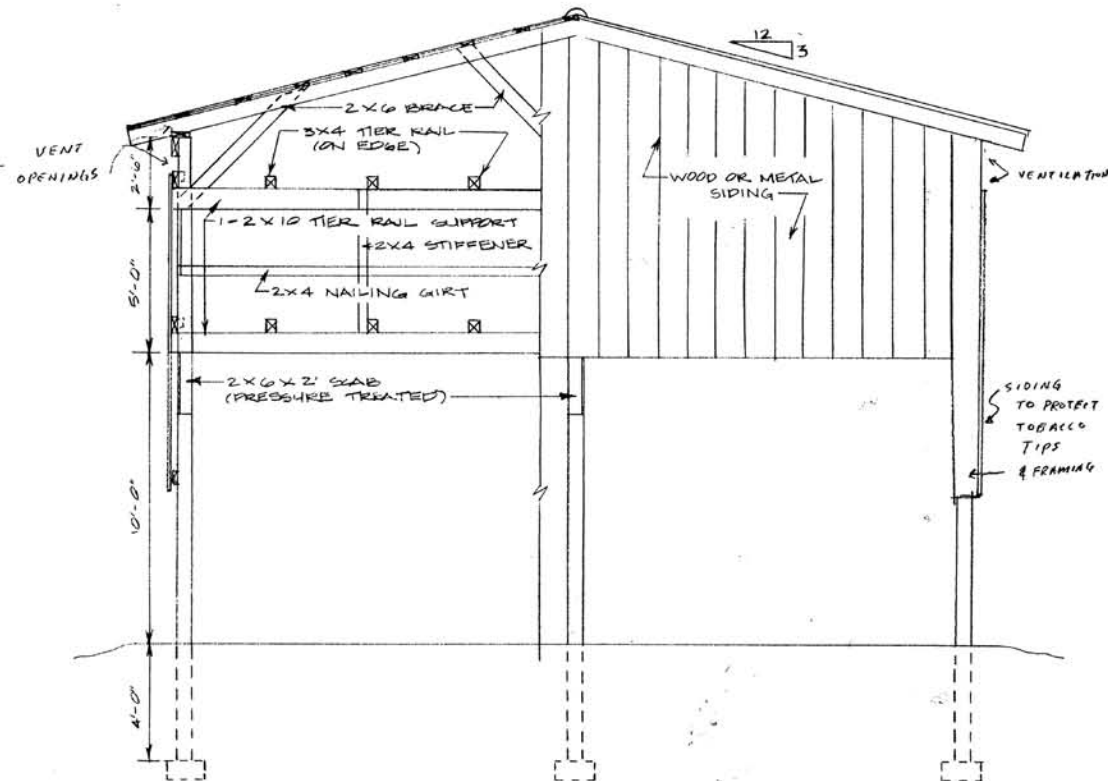
COOPERATIVE EXTENSION SERVICE
AGRICULTURE AND HOME ECONOMICS
DEPARTMENT OF AGRICULTURAL ENGINEERING
COLLEGE OF AGRICULTURE
UNIVERSITY OF KENTUCKY
AND
U.S. DEPARTMENT OF AGRICULTURE COOPERATING

DESIGNED BY: J. N. WALKER	SHEET 2 OF 2
CHECKED BY: C. A. DUNCAN	PLAN NUMBER KY. II. 735-24
DRAWN BY: S. ELLIOTT	
DATE: APRIL 1974	
REVISIONS: JAN. 1980	REV. 8-91



SIDE ELEVATION

SCALE: 1/4" = 1'-0"

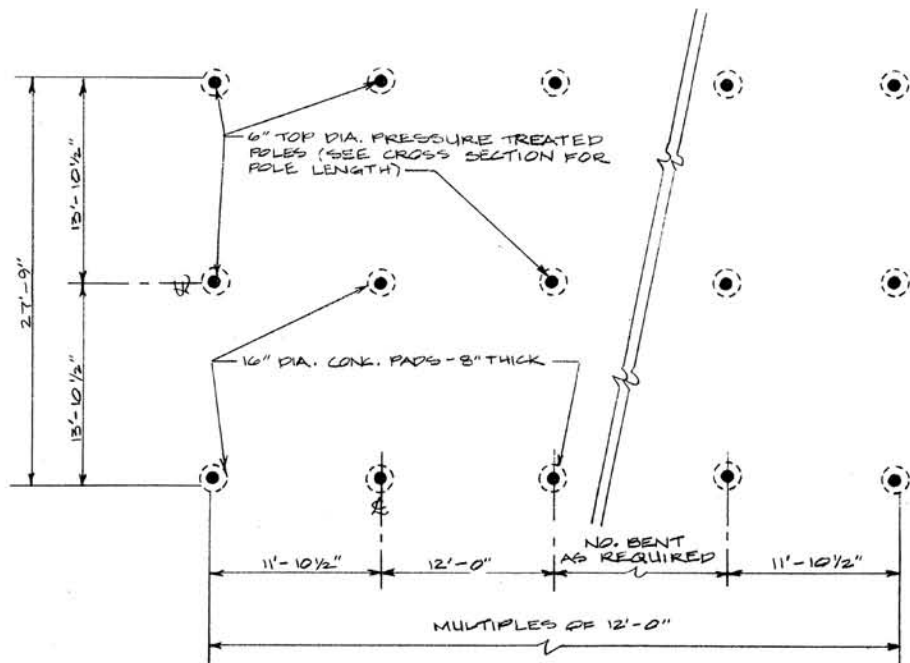


END ELEVATION

SCALE: 1/4" = 1'-0"

GENERAL DESCRIPTION

- NOTE 1. USE GOOD QUALITY FULL DIMENSION (F.D.) ROUGH SAWN LUMBER, OR DRESSED (S4S) LUMBER OF STANDARD GRADE DOUGLAS FIR, NO 2 SOUTHERN YELLOW PINE, EQUIVALENT OR BETTER, OF THE SIZES SPECIFIED ON THE PLANS.
- NOTE 2. USE OF KING SHANK OR SCREW SHANK POLE BARN NAILS IS RECOMMENDED FOR SUPERIOR HOLDING STRENGTH, ESPECIALLY FOR ALL CONNECTIONS TO PRESSURE TREATED POLES AND ALL SOFTWOOD LUMBER NAILING. USE 40d (5") NAILS FOR FRAMING (UNLESS OTHERWISE NOTED) TO PRESSURE TREATED POLE JOINTS, USE 16d (3 1/2") FOR ALL OTHER LUMBER FRAMING.
- NOTE 3. USE KING SHANK OR SCREW SHANK ROOFING NAILS WITH NEOPRENE WASHER OR LEAD UNDER-HEAD PER MFGG SPECS FOR ALL METAL ROOFING OR SIDING ATTACHMENT.



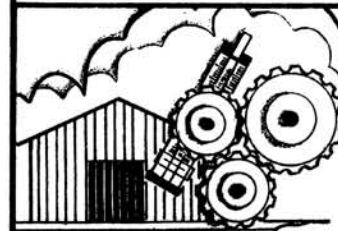
FLOOR PLAN

SCALE: 1/8" = 1'-0"

TABLE 1. APPROXIMATE BARN CAPACITY PER 12-FOOT BENT (28' WIDE - 16' TIER SPACES BENT)

STICK SPACING:	6 PLANTS/STICK			5 PLANTS/STICK		
	6"	5 1/2"	5"	6"	5 1/2"	5"
STICKS PER RAIL:	24	26	29	24	26	29
PLANTS PER ACRE	ACRES PER 12 FOOT BENT					
8,000	.29	.31	.35	.24	.26	.29
7,500	.31	.33	.37	.26	.28	.31

TWO-TIER PARTIALLY ENCLOSED AIR-CURE TOBACCO BARN



COOPERATIVE EXTENSION SERVICE
 AGRICULTURE AND HOME ECONOMICS
 DEPARTMENT OF AGRICULTURAL ENGINEERING
 COLLEGE OF AGRICULTURE
 UNIVERSITY OF KENTUCKY,
 AND
 U.S. DEPARTMENT OF AGRICULTURE COOPERATING

DESIGNED BY: J.N. WALKER
 CHECKED BY: G.A. DUNCAN
 DRAWN BY: S. ELLIOTT
 DATE: APRIL '74
 REVISIONS: JAN. '86

SHEET 1 OF 2

PLAN NUMBER

KY. II. 735-34