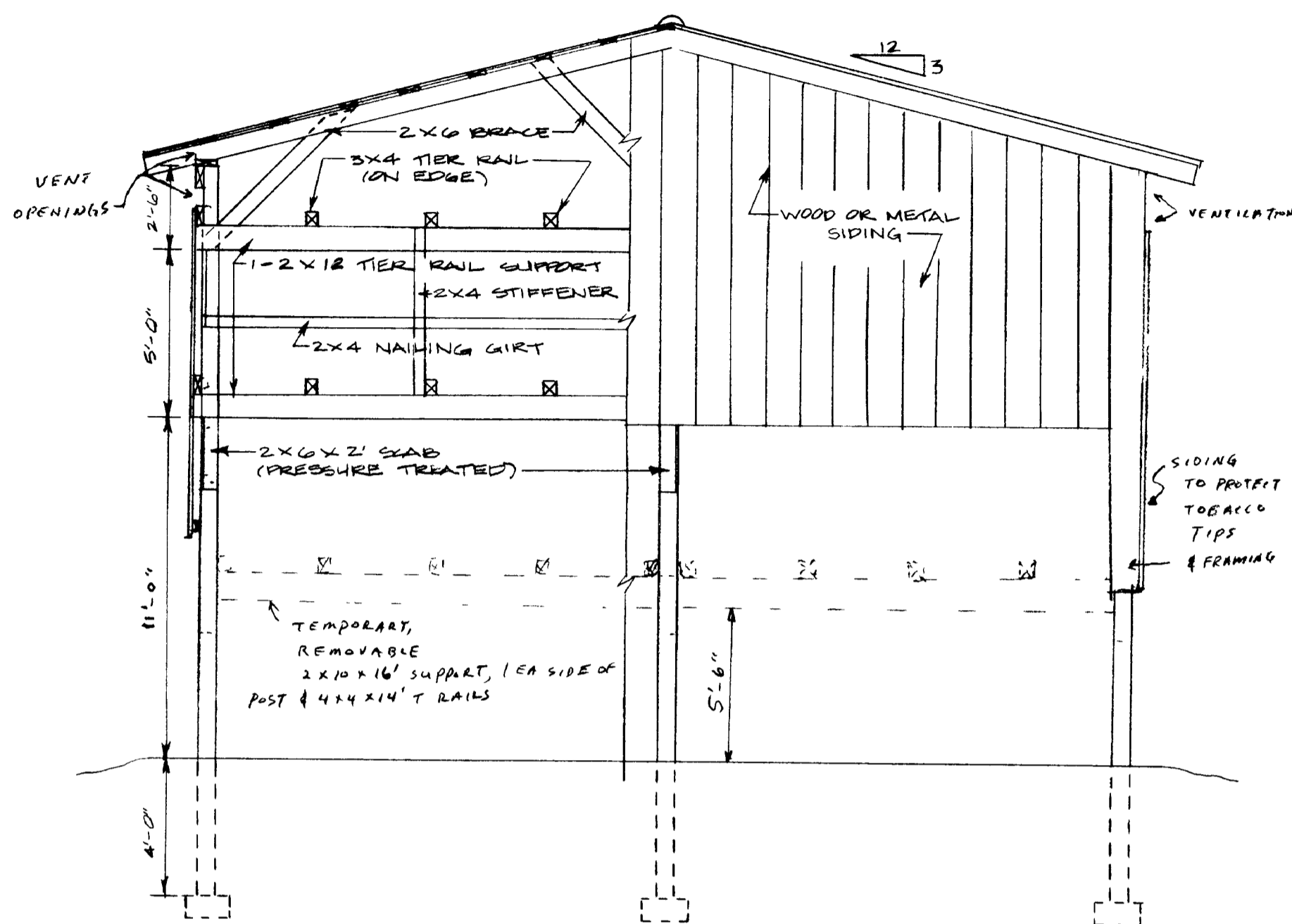


SIDE ELEVATION
SCALE: 1/4" = 1'-0"



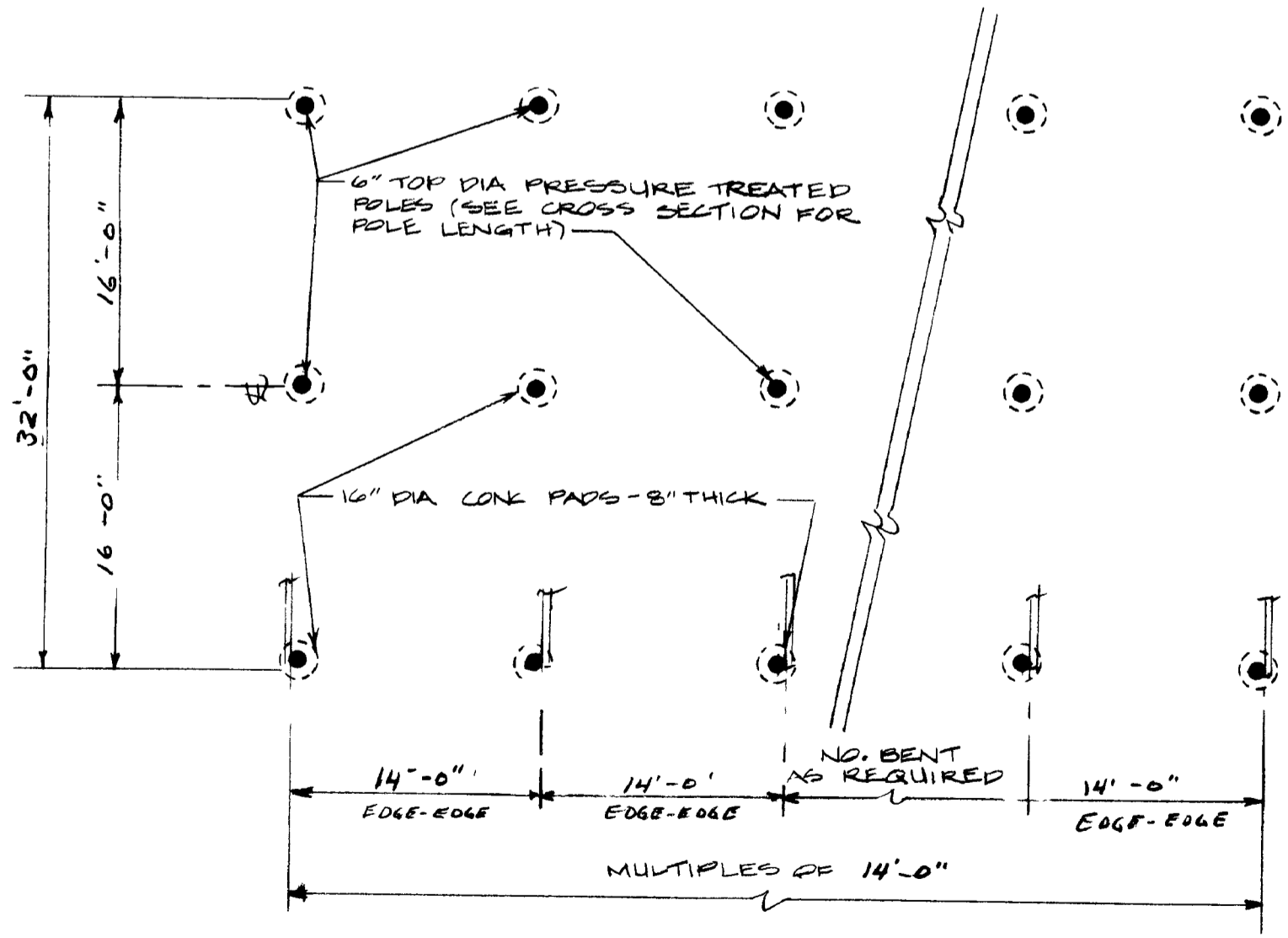
END ELEVATION
SCALE: 1/4" = 1'-0"

GENERAL DESCRIPTION

- NOTE 1 USE GOOD QUALITY FULL DIMENSION (F.D.) ROUGH SAWN LUMBER, OR DRESSED (D.A.S) LUMBER OF STANDARD GRADE DOUGLAS FIR, NO 2 SOUTHERN YELLOW PINE, EQUIVALENT OR BETTER, OF THE SIZES SPECIFIED ON THE PLANS
- NOTE 2 USE OF RING SHANK OR SCREW SHANK POLE BARN NAILS IS RECOMMENDED FOR SUPERIOR HOLDING STRENGTH, ESPECIALLY FOR ALL CONNECTIONS TO PRESSURE TREATED POLES AND ALL SOFTWOOD LUMBER NAILING USE 40d (5") NAILS FOR FRAMING (UNLESS OTHERWISE NOTED) TO PRESSURE TREATED JOINTS, USE 10d (3 1/2") FOR ALL OTHER LUMBER FRAMING
- NOTE 3 USE RING SHANK OR SCREW SHANK ROOFING NAILS WITH NEOPRENE WASHER OR LEAD UNDER-HEAD PER MFGG SPECS FOR ALL METAL ROOFING OR SIDING ATTACHMENT.

TABLE 1. APPROXIMATE BARN CAPACITY PER 14'-FOOT BENT (32' WIDE - 16' TIER SPACES BENT, WITH 3RD TEMP RAIL)

STICK SPACING.	6 PLANTS/STICK		
	6" 5 1/2" 5"		
STICKS PER RAIL:	29	31	34
PLANTS PER ACRE	ACRES PER 14' BENT		
8,000 (1333 STKS)	52	.56	.61
7,500 (1250 STKS)	.56	.60	.65

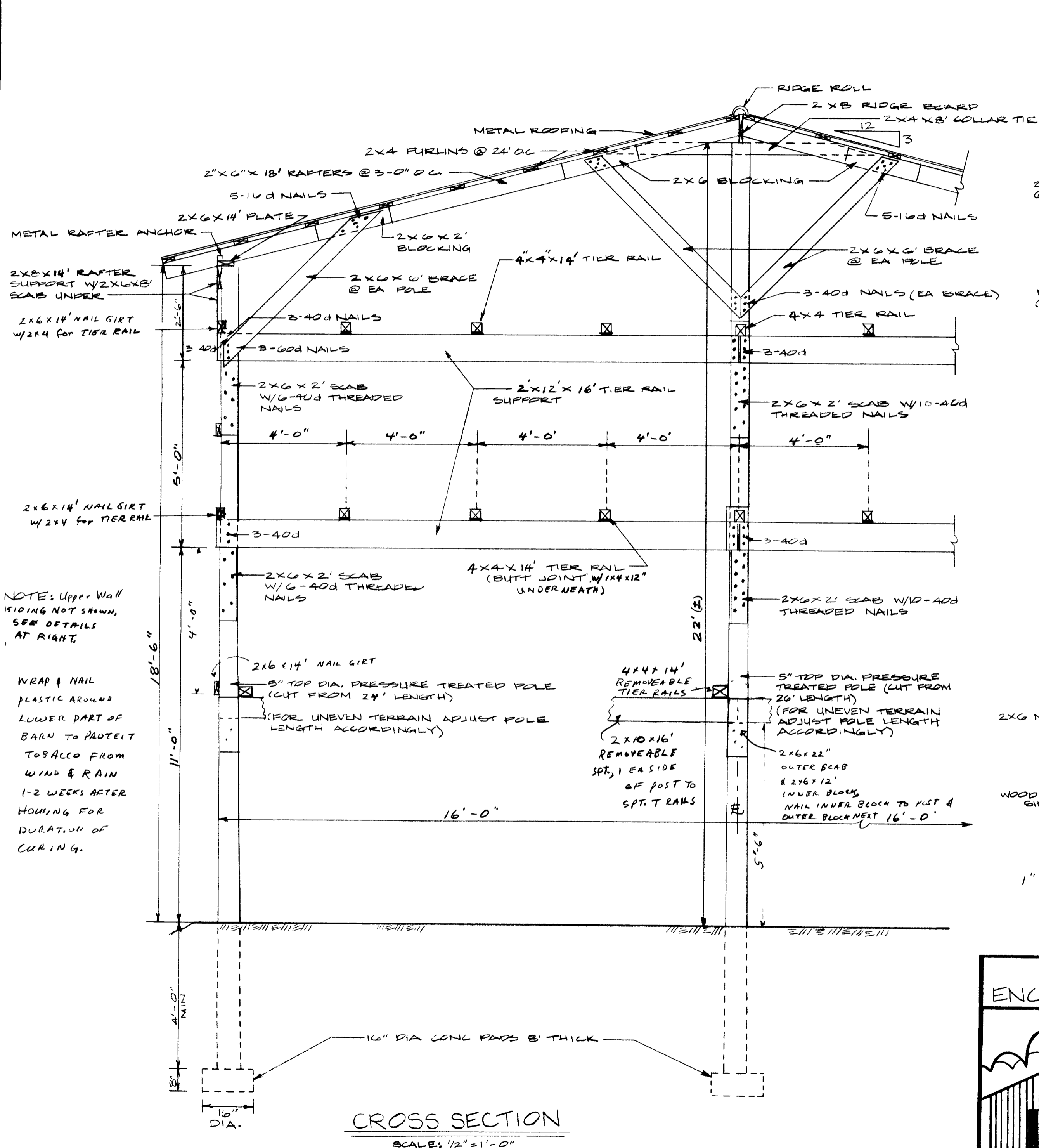


FLOOR PLAN
SCALE: 1/8" = 1'-0"

TWO-TIER PARTIALLY ENCLOSED AIR-CURE TOBACCO BARN

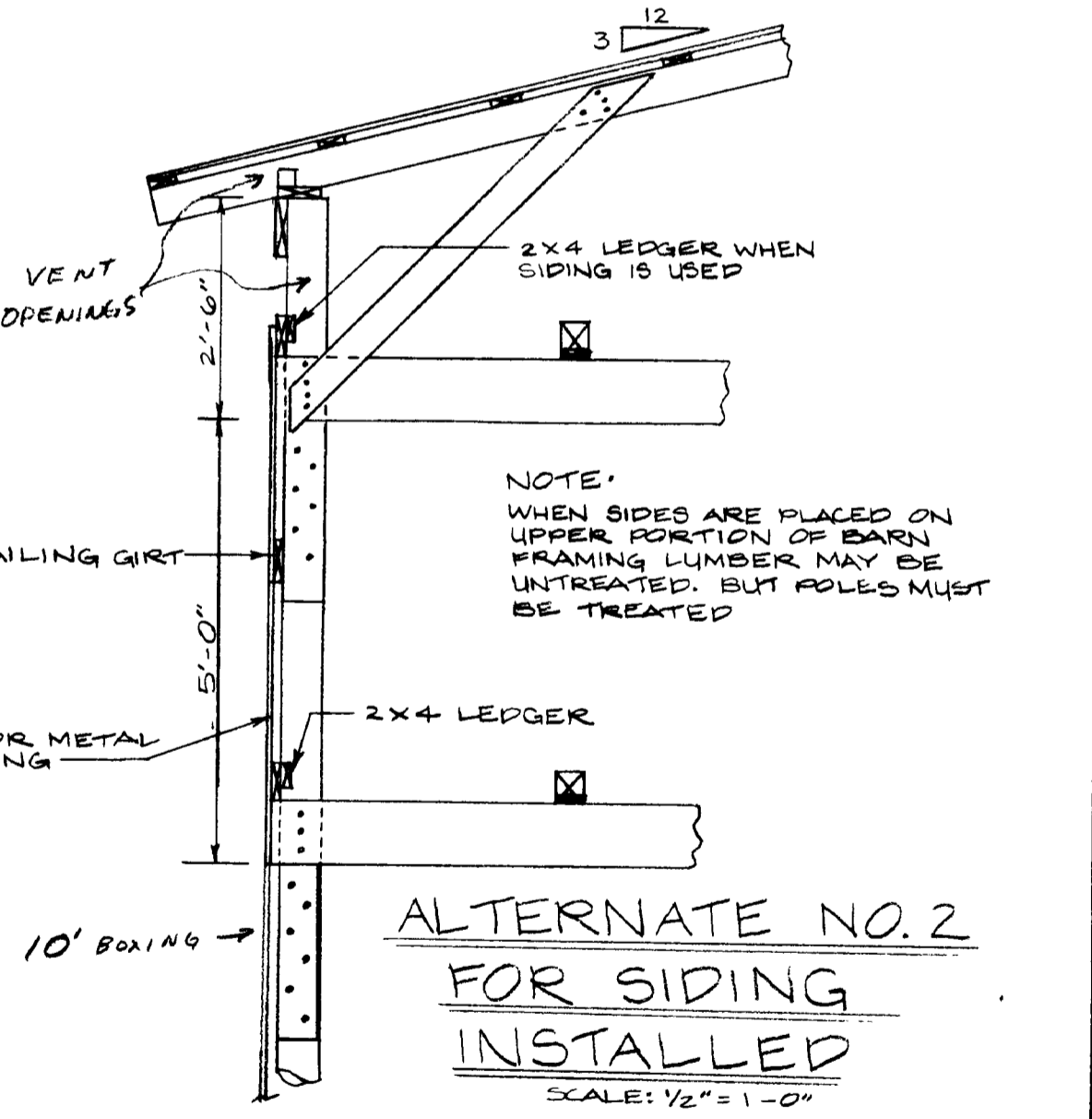
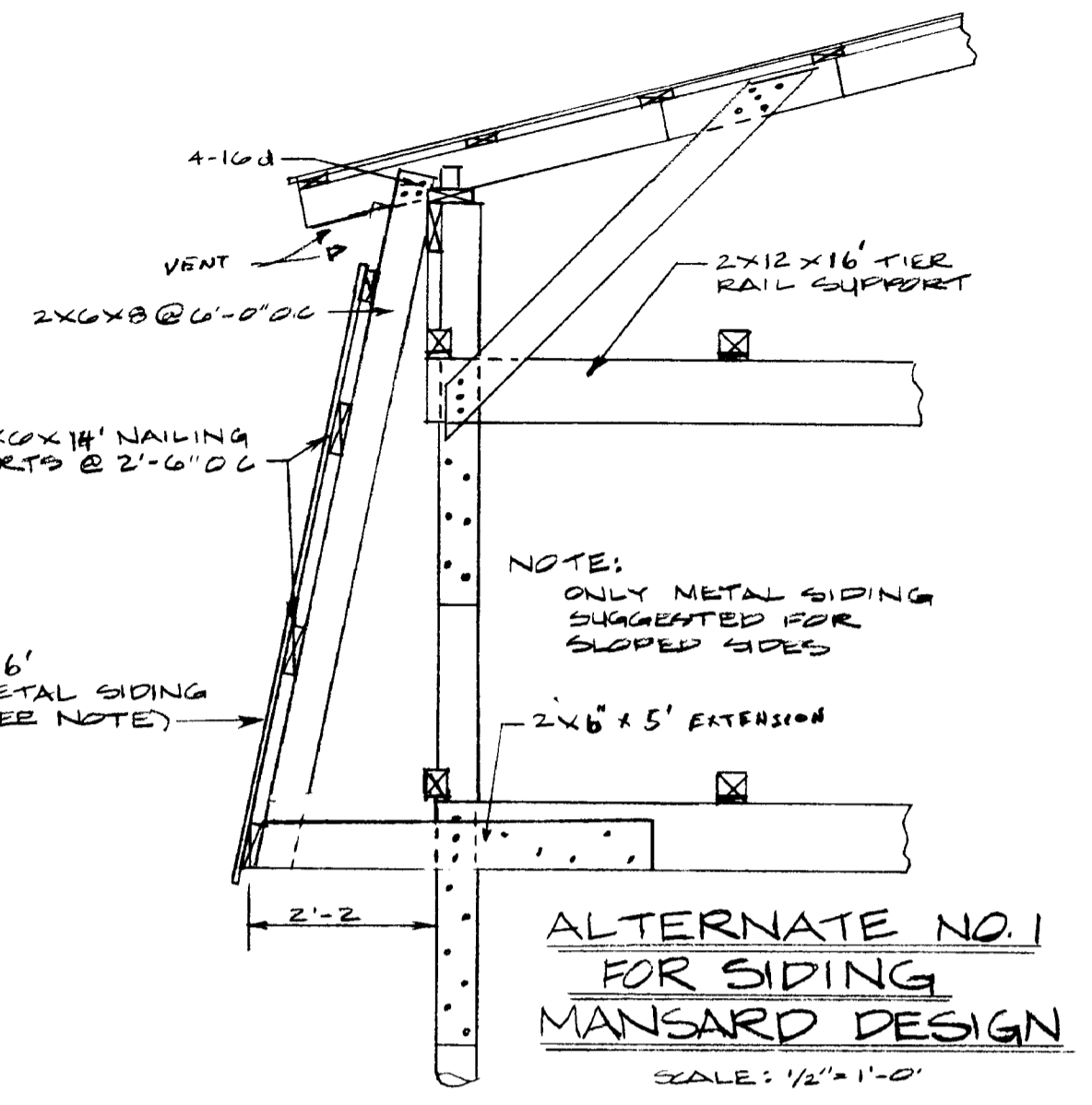
COOPERATIVE EXTENSION SERVICE
AGRICULTURE AND HOME ECONOMICS
DEPARTMENT OF AGRICULTURAL ENGINEERING
COLLEGE OF AGRICULTURE
UNIVERSITY OF KENTUCKY
AND
U.S. DEPARTMENT OF AGRICULTURE COOPERATING

DESIGNED BY W. N. WALKER	SHEET 1 OF 2
CHECKED BY G. A. DUNCAN	PLAN NUMBER
DRAWN BY S. ELLIOTT	KY. 11.735 34A
DATE	
REVISIONS APR '91	



NOTE: Upper Wall Siding Not Shown, SEE DETAILS AT RIGHT.

WRAP & NAIL PLASTIC AROUND LOWER PART OF BARN TO PROTECT TOBACCO FROM WIND & RAIN 1-2 WEEKS AFTER HOUSING FOR DURATION OF CURING.



TWO-TIER PARTIALLY ENCLOSED AIR-CURE TOBACCO BARN

COOPERATIVE EXTENSION SERVICE
AGRICULTURE AND HOME ECONOMICS
DEPARTMENT OF AGRICULTURAL ENGINEERING
COLLEGE OF AGRICULTURE
UNIVERSITY OF KENTUCKY
AND
U.S. DEPARTMENT OF AGRICULTURE COOPERATING

DESIGNED BY J.N. WALKER	SHEET 2 OF 2
CHECKED BY G.A. DUNCAN	PLAN NUMBER
DRAWN BY S. ELLIOTT	KY. II. 735-34A
DATE	
REVISIONS APR. 91	