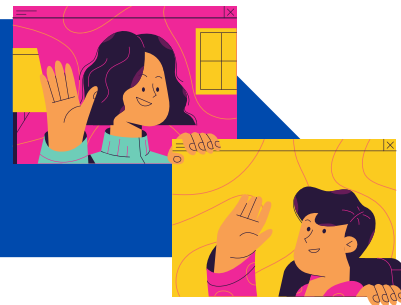


RSI Instructional Activity and Best Practice



The chart below outlines example instructional activities and best practices that reflect Regular and Substantive Interaction (RSI) requirements. It is not meant to dictate what must be included or to be an exhaustive list as instruction varies widely across fields and settings.

Please note: The chart below seeks only to illustrate activities that meet the RSI requirement; it does not mean to suggest that any activities lack inherent pedagogical value for a course.



Examples of Practices Reflecting RSI



Examples of Practices Not Reflecting RSI

Initiated by Instructor

- interactions are **prompted by the instructor**.
- instructor takes an **active part in initiating and guiding a range of interactions** with students throughout the semester.

- posting a discussion question and **actively facilitating** the conversation
- **assigning material** to which students must study and respond
- **providing feedback** on a student assignment
- allowing students to revise and resubmit assignments based on **instructor's feedback**
- using small working/study groups that are **moderated by the instructor**

- setting up automatic grading without instructor feedback on an assignment
- responding to a student's email about the course.
- student-initiated meeting to discuss the course.

Regular and Scheduled

- interactions should be **reasonably frequent and consistently repeated** throughout the semester.
- the regular cadence of interactions the instructor establishes should remain as **consistent** as possible.

- facilitating a **weekly** online discussion
- sending **weekly** updates about class progress, expectations and goals for the week
- providing meaningful feedback on **regular** formative assessments
- using the interactive features available in Canvas at **scheduled intervals** throughout the semester

- sending one welcome message during the first week of class and another at mid-semester
- permitting students to complete coursework in a self-paced, independent study format
- the majority of course assignments are due at the end of the semester
- providing an open-ended online forum that is not moderated by the instructor



Example of Practices
Reflecting RSI

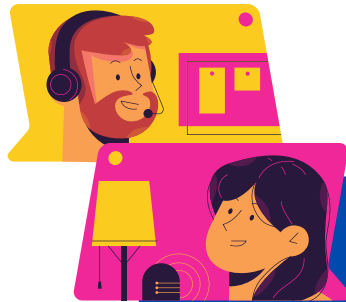


Example of Practices
Not Reflecting RSI

Academic in Nature AND Relevant to Course

Interactions should be connected to the **subject of the course** and **contribute to the students' progress**.

- posting a news article **related** to the **course material**
- sharing overall takeaways from the **class's performance** on a recent **course assessment**
- polling the students regarding what **course content** students are struggling **to understand**.
- posting a message on the discussion post that is unrelated to the course subject material
- discussing other classes students are taking during office hours
- posting an announcement about an assignment deadline



Questions? Contact:

UK Distance Learning

Teaching, Learning, & Academic Innovation

distancelearning@uky.edu

(859) 257-3377